



NEW JERSEY DEPARTMENT OF CHILDREN AND FAMILIES

New Jersey Statewide Student Support Services (NJ4S) School District Webinar

August 24, 2023

Agenda

- What Programs Does NJ4S Offer
- Who is Eligible to Receive Services
- How do I Access Services
- Introducing the NJ4S Hubs
- Frequently Asked Questions
- NJ4S timeline
- Q&A



NJ4S is...

- A statewide network of supports for students and their families
- Centered around the voice, experience and needs of students and their families
- A standard set of supports and services, with local adaptations, that leverage the best approaches the field has to offer
- Designed to offer support to the whole family in addition to individual students, impacting students' academic achievement as well as emotional well being



Multi-pronged approach needed for complex public health crisis

Prevention & Surveillance

- Pediatric psychiatry collaborative
- NJ4S
- DREAMS
- Crisis and behavioral health toolkits
- Training on suicide prevention
- Development and deployment of risk messaging
- Harassment, intimidation and bullying laws
- Social/emotional health curriculum

Treatment

- **Expanding BH workforce:** e.g. HESSA loan redemption, NJ DOE school based MH services grant program
- **Expanding access to care:** e.g., Cover All Kids, 1115 “carve in” of BH benefit
- **Additional services:** e.g., Assertive Community Treatment, IDD in-community services
- **NJ Children’s System of Care**

Crisis Intervention and Support

- Mobile Response and Stabilization Service
- 2nd Floor crisis line
- Family Help Line
- 988
- DHS-funded CCIS units



NJ4S Services: Tiered Supports

NJ Statewide Student Support Services (NJ4S)

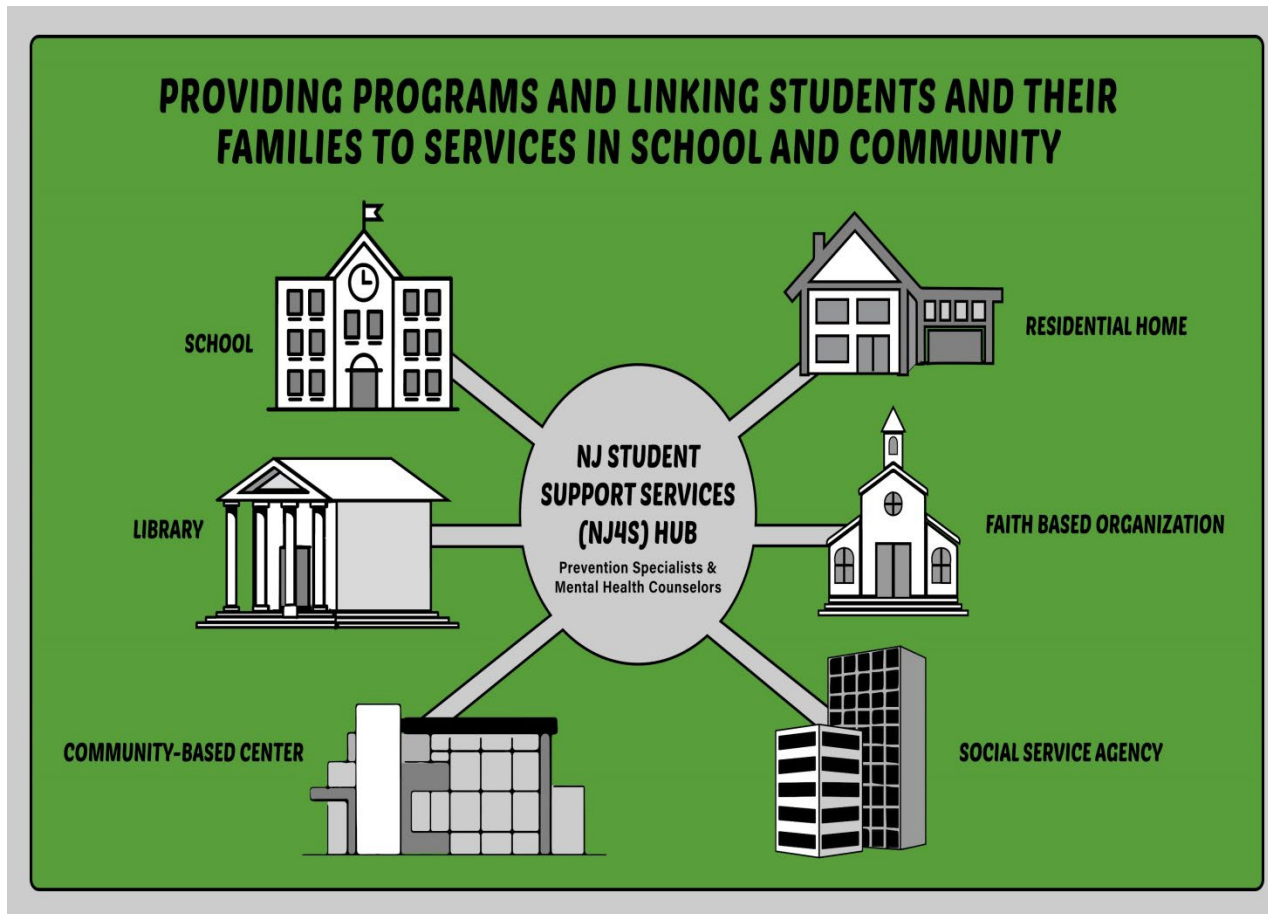
	Tier 1	Tier 2	Tier 3
Available to:	<ul style="list-style-type: none"> Public: In-Person, Online, Virtual Students and their Families: <ul style="list-style-type: none"> Pre-K to Grade 12 School Staff 	<ul style="list-style-type: none"> Students and their Families: <ul style="list-style-type: none"> Public middle schools, high schools and upper grades of K-8 schools Schools with a School Base Youth Service Program are excluded School Staff consultation 	<ul style="list-style-type: none"> Students and their Families: <ul style="list-style-type: none"> Public middle schools, high schools and upper grades of K-8 schools Schools with a School Base Youth Service Program are excluded School Staff consultation
Description:	<ul style="list-style-type: none"> Activities such as curriculum efforts, workshops, webinars, assemblies and training These services can include linkages/partnerships with existing community resources (e.g., Family Success Centers) 	<ul style="list-style-type: none"> Evidence-based, targeted prevention intervention, typically delivered in small groups Schools may be connected to existing programs implemented within the community 	<ul style="list-style-type: none"> Evidence-based, targeted prevention intervention, typically delivered for individuals Assessment and brief individualized clinical interventions in-person or via telehealth Clinicians are also available for consultation with school staff or for brief counseling/referral for family members
Referral Required:	No	Yes – through the NJ4S System	Yes – through the NJ4S System

Addressing Demand and Capacity

- NJ4S is a new *addition* to an existing landscape of services addressing youth and family mental health and well-being.
- It is not intended to replace existing programs and services or disrupt established relationships between schools and community services.
- Hub staff will rely on and connect students and their families to existing community resources.
- Hubs will prioritize services to school districts based on the School District Needs Index



Hubs Provide A Statewide Network of Supports



- 15 **hubs** have been established throughout the state
- Hubs will deliver services at **spokes** where youth and families are most comfortable
- **NO ONE WILL NEED TO TRAVEL TO A HUB TO ACCESS HELP**
- Hubs will be **integrated** with other formal support systems serving youth and families:
 - NJ Children’s System of Care
 - Pediatric Psychiatric Collaborative
 - Family Success Center network



Introducing NJ4S Hubs

- ATLANTIC & CAPE MAY
- BERGEN
- BURLINGTON
- CAMDEN
- ESSEX
- HUDSON
- MERCER
- MIDDLESEX
- MONMOUTH
- MORRIS & SUSSEX
- PASSAIC
- UNION
- SOMERSET, HUNTERDON, & WARREN
- OCEAN
- GLOUCESTER, CUMBERLAND, & SALEM

- Acenda, Inc.
Children's Aid and Family Services, Inc. (CAFS)
Legacy Treatment Services
- Center for Family Services, Inc. (CFS)
Family Connections, Inc.
Partners in Prevention
Catholic Charities, Diocese of Trenton
Rutgers University Behavioral Health Care (UBHC)
- Preferred Behavioral Health Group
Mental Health Association of Essex and Morris, Inc.
New Jersey Community Development Corporation
Prevention Links
- Center for Family Services, Inc.
- Preferred Behavioral Health Group
- Acenda, Inc.



Union Vicinaje – Prevention Links – Nafisa Downs

- What we learned from the School/Community
 - Prevalence and Impact of mental health issues
 - Stigma and awareness
 - Limited Resources
 - Importance of early intervention
 - The importance of a collaborative approach
 - Training and education
 - The need for tailored services and support
- What we will be offering to start
 - Education Workshops
 - Online Resources
 - Counseling Services
 - Public Awareness Campaigns
- From hub perspective, what else is most critical to share with the schools
 - Referral process
 - Privacy and confidentiality
 - Training and professional development
 - Evaluation and feedback
 - Availability and accessibility



Mercer Vicinage – Catholic Charities, Diocese of Trenton – Michael Lovaglio

■ What we learned from the School/Community

- Three critical Areas of Focus in Mercer County
 - Mental Health and Wellness, with curriculum on Suicide Prevention.
 - Anti-Bullying and Violence Prevention, with supplemental curriculum on the power and responsibility of social media.
 - Substance Use Prevention.
 - A 4th Area of Focus was added, anticipating referrals for this service- Sexual Health.
- High needs communities are eager to utilize NJ4S services, excited to collaborate on tempering the mental health crisis.
- Prevention Education in high needs communities needs to start as early as 4th grade.
 - Tier 1 services will accommodate this need as often as necessary.

■ What we will be offering to start

- The Mercer Hub will start as soon as Salesforce goes live, anticipating referrals the first week of school, and providing services by the end of September.
- We are already in conversation with high needs districts, family support centers, and the Boys and Girls Club of Mercer County.

■ From hub perspective, what else is most critical to share with the schools

- Competency and longevity are critical to the success of NJ4S in Mercer County.
- While the work is short term, preventative, and clinical, it can also be educational. The Mercer HUB Advisory Board is already considering how to fuse education into services in Year 2.



Essex Vicinage – Family Connections – Diane Travers

■ **What we learned from the School/Community:**

- NJ4S-Essex conducted a community need assessment obtaining feedback from parents, students, community providers, and school staff. Parents revealed they feel the biggest needs are the mental health and well-being of their youth, school staff revealed that the impact of trauma on youth and mental health needs are the biggest concerns. Teachers indicated they would benefit from mindfulness/stress reduction strategies.

■ **What we will be offering to start:**

- Initially, our clinicians will be available to begin clinical services. Our Prevention Consultants will be meeting with school staff to identify all the areas of need. Certain programs will be available immediately for Tier Two. Tier One is open currently for any presentations.

■ **From hub perspective, what else is most critical to share with the schools:**

- For NJ4S Essex, it is critical for the schools to inform us of any requirements for us to begin serving the students in their District and the buildings. In Essex, many of our Districts and Charter schools require MOUs be fully approved by their BOEs prior to our programs being able to commence. In addition, many Districts require BOE fingerprinting in addition to the background checks Family Connections administers to all new staff. The other critical information for schools will be for us to share our consents for Tier Two and Tier Three services.



Middlesex Vicinage - Rutgers University Behavioral Health Care (UBHC) – Ravjit (Ruby) Sekhon

■ What we learned from the School/Community

- 42 Districts in Middlesex County; 7 high needs
- Top Needs identified:
 - Mental health services-increase in anxiety/depression especially since post-pandemic
 - Need to create awareness/education in help seeking behaviors, bullying, substance abuse and suicide prevention, provide support for loss/grief
 - Assistance in finding outside resources and supports for students that are affordable and can be delivered in a timely manner
 - Classroom management skills and supporting school personnel in self-care as well as professional development in mental health.

■ What we will be offering to start

- Education on NJ4S Middlesex
- Training on how to assist schools in referral process
- Help schools identify specific needs
- Tier 1 Services Calendar of Events that will be offered to schools and communities by NJ4S Middlesex and/or community partners. Webinars, presentations on varying mental health or school support topics.

■ From hub perspective, what else is most critical to share with the schools

- Referrals are initiated by schools, initial consents obtained by schools and each service must have its own application with an estimated 72- hour timeframe on assignment. NJ4S is not for crisis related concerns.
- Services do not need to be provided at school and can occur through the many other spokes of the community.
- Hub hours will meet community needs with some evening and weekend availability.



FAQs: General Questions

Q1: My school district is in a more rural part of the state/county. All the resources typically go to the urban/ more densely populated parts of the region. Will NJ4S do the same?

Q2: My school/district already has similar programming. Will our existing programming be taken away?

Q3: Won't it be too hard for students to travel to a hub to get services?

A1: NJ4S directs hubs to provide Tier 1 programming universally in the region.

Tier 2 and 3 support will be provided to districts that request it based on need, as identified in the DCF School District Needs Index created in response to P.L. 2021, Chapter 323. This index controls for population size.

A2: No. Participation in NJ4S is optional. NJ4S does not replace but supplements existing programming

A3: Services will be “pushed out” to **spoke locations in the community: schools, community centers and other places identified through hub advisory board input.**



FAQs: Accessing Services

Q4: What is a spoke?

A4: Any place within the community where youth and families feel most comfortable to receive services from the hubs. The school is considered a “spoke”.

Q5: How do I contact the Hub?

A5: Schools contact the hub through the NJ4S Application System. Tier 2 and Tier 3 Service requests can only be made by the school

Q6: Why can't elementary schools receive Tier 2 and Tier 3 programming?

The program is staffed and programming developed for middle and high school aged students



FAQs: Accessing Services

Q8: What if I already have services in my school? Can I still apply?

A8: Schools with School Based Youth Services Programs do not have access to NJ4S Tier 2 and Tier 3 Services. Consultation with the hub will determine if the hub is best suited to deliver a service or if an existing entity is best able to deliver a service. And remember, NJ4S is not meant to replace existing services but to augment them.

Q9: When can I start applying for services

A9: Step 1- Your school should have identified a school representative.
Step 2- Check out the NJ4S training videos on YouTube.*(COMING END OF MONTH)*
Step 3- If you are a School or District Rep, Check your email for login access and explore the system.
Step 4- Submit your application!

This Is For the Identified School Representatives who will be notified when the NJ4S Information System Goes Live



Accessing the NJ4S Information System

- Principals of public high schools, middle schools and the upper grades of K-8 schools (6-8 grades), must identify and submit a school representative's contact details to the NJ4S Information System in order to apply for evidence-based prevention programs and brief counseling interventions. Superintendents must register themselves or a delegate in order to access the dashboard that shows the districts' applications/services.

School and District Representative contact information needed:

First Name, Last Name, Title, E-Mail Address

<https://www.surveymonkey.com/r/NJ4Susercontacts>



FAQs: NJ4S Application and Data System

Q10: How do I use the IT system

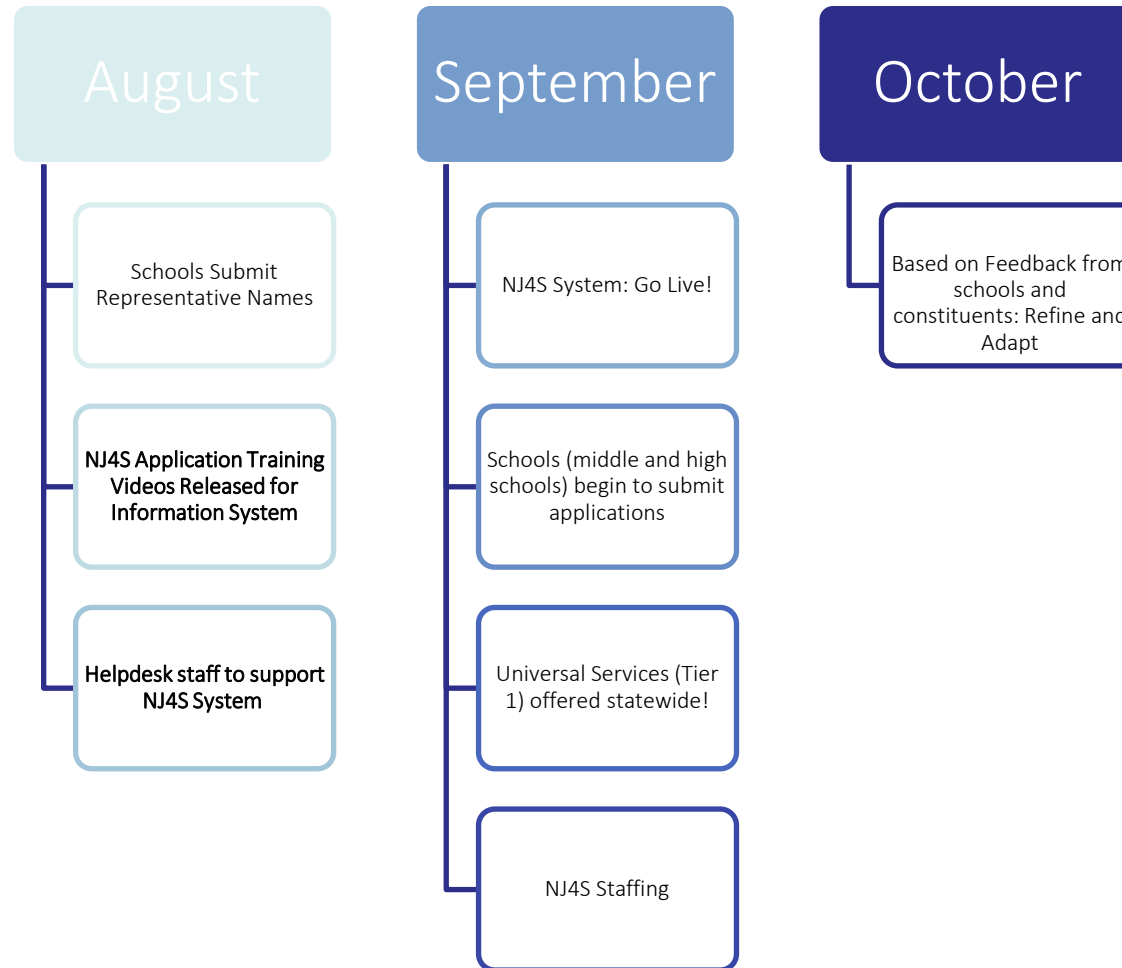
A10: School Representative Trainings will be available within days.

Q11: What data can the schools and superintendents see?

A11: Schools and School District representatives will have a dashboard available to indicate what has been requested, the status the request and what has been delivered.



Go Live Timeline for 2023



NJ4S Web Page and DOE Broadcasts

- Linked from the department landing page carousel
- www.nj.gov/dcf/nj4s.html (or just google NJ4S)
- Check out the Tabs!!!
 - NJ4S Communication Assets
 - NJ4S School District Needs
 - NJ4S State Advisory Group
- Additional Information: DOE broadcasts <https://www.nj.gov/education/broadcasts/>



Open Floor for Additional Questions

Ask Your Question Now:



Enter question in Chat



Raise your Hand

.... ***Or Ask It Later!***



Send email to NJ4Sfeedback@dcf.nj.gov

