

American Planning Association of New Jersey
2018 New Jersey Planning Conference
January 26, 2018

New Jersey Coastal Management Program

Office of Coastal and Land Use Planning

***National Fish & Wildlife Foundation Grant:
Building Ecological Solutions to Coastal Hazards***



Office of Coastal and Land Use Planning Resiliency Planning Assistance



Why focus on this in NJ?

Hundreds of thousands of people live in areas vulnerable to coastal hazards

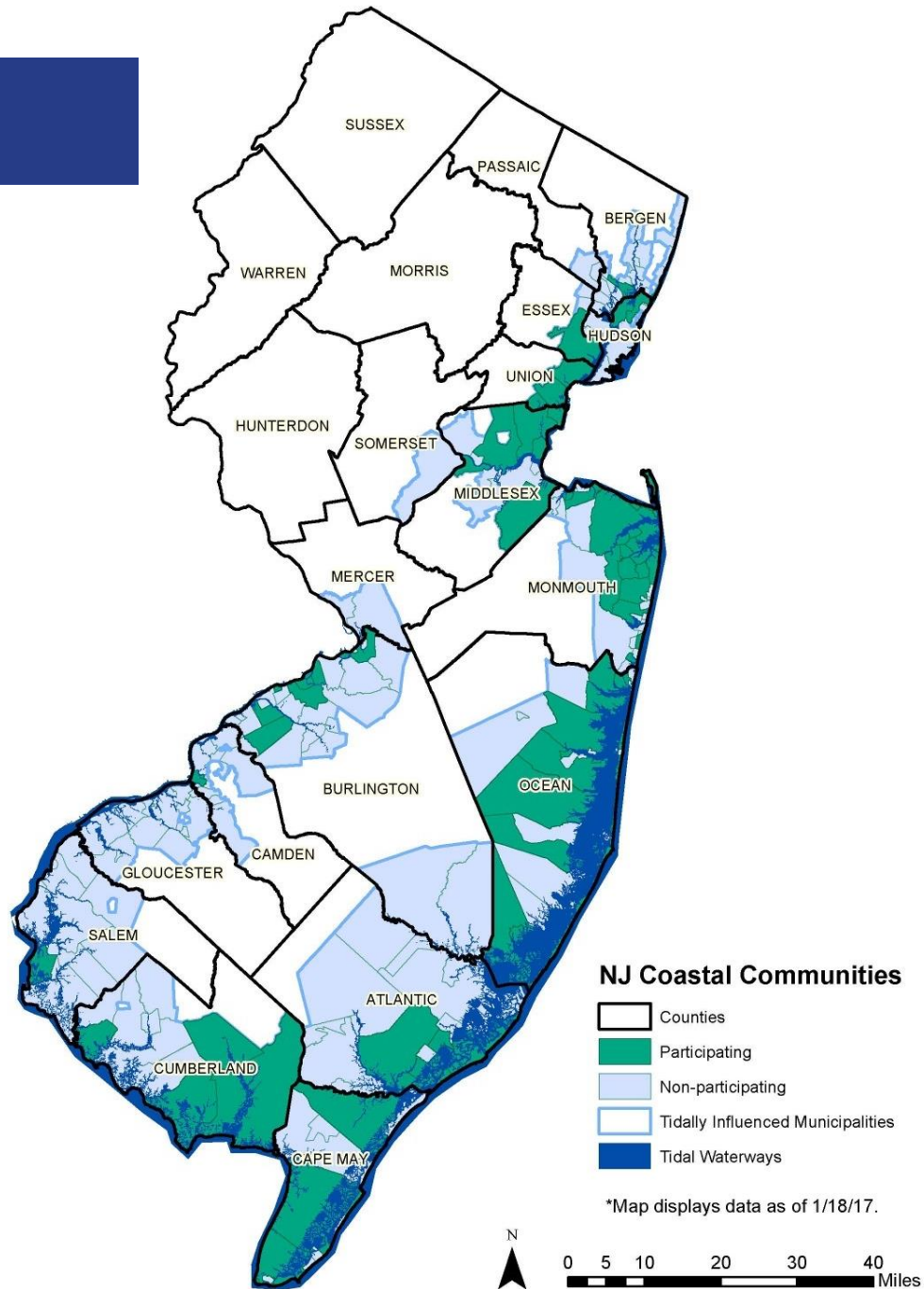
- Almost 70% socially vulnerable census tracts are in flood hazard areas
- Over 65% of our shorelines are at high risk to coastal erosion and SLR
- Statewide Hazard Mitigation Plan shows \$145 billion in building stock and 1700 critical facilities (hospitals, schools, dams, bridges...) are exposed to the 1% annual chance storm
- Based on the Toms River HMP, this could be 20%, 35% and 80% worse in 2030, 2050 and 2100
- Sandy, Irene and other storms show significant coastal storm damage has and can happen here
- Every dollar spent in prevention equals 4 in recovery



1. 2014 – NOAA, Resilient Coastal Communities Initiative grant, \$425,221 Federal funds, \$150,000 State match
2. 2014 – EPA, Living Shorelines Program Development, Wetlands Program Development fund, \$110,000 Federal, \$37,000 State match
3. 2015 – DOI/NFWF – Building Ecological Solutions to Coastal Community Hazards, \$3,440,000 Federal, \$782,210 Local Match, \$112,678 State Match
4. 2016 – NOAA, FRAMES, Regional Resiliency Grant - \$898,656 Federal, \$450,333 State and Local Match
5. 2016/2017 – HUD, NDRC – Regional Resiliency Planning grant - \$10,000,000 Federal
6. 2017 – EPA, Monitoring and Policy Recommendations for shoreline and marsh restoration and enhancement projects



Resilience Planning



Ecological Solutions to Coastal Community Hazards

- \$3.4 million grant award funded by the Hurricane Sandy Coastal Resiliency Competitive Grant Program through the Department of the Interior (DOI), administered by NFWF
- Over 20 partners from NPOs, NEPs and universities to local governments
- Grant tasks include:
 - Assist 30 communities with GTR, CVA and technical advice
 - Develop guide for municipalities and promote ecological solutions on a local, regional and national level
 - Funding for 10 local government projects that address coastal hazards with ecological solutions
 - Marsh and project monitoring and new citizens monitoring program
 - Development of high school curriculum module with over 700 students participating in ecological projects

**APA NJ 2017 Planning Excellence Awards
Outstanding Community Engagement and Education Award**

Partners and Awards

APA NJ 2017 Planning Excellence Awards Outstanding Community Engagement and Education Award

NJ Society of Municipal Engineers' 2017 Project of the Year: Category G - Municipal Projects Involving Intergovernmental Cooperation

Brigantine Beach Living Shoreline Project



NFWF



STEVENS
INSTITUTE of TECHNOLOGY
THE INNOVATION UNIVERSITY®



www.njaudubon.org



RUTGERS
Edward J. Bloustein School
of Planning and Public Policy



Atlantic City

Brigantine Beach

Downe Township

Margate City

Somers Point

Secaucus Town

Spring Lake Township

Lower Township

Upper Township

Cape May Count

Thank you!

Elizabeth Semple
Office of Coastal and Land Use Planning
Elizabeth.Semple@dep.nj.gov

