

STATE OF NEW JERSEY

SHELLFISH GROWING WATERS CLASSIFICATION CHARTS

Phil Murphy, Governor

Sheila Oliver, Lt. Governor

Shawn M. LaTourette, NJDEP Commissioner

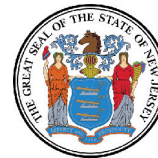
NEW JERSEY DEPARTMENT OF ENVIRONMENTAL PROTECTION

Division of Water Monitoring, Standards and Pesticide Control

Bureau of Marine Water Monitoring

P.O. Box 405 Leeds Point, NJ 08220

nj.gov/dep/bmw/



Charts may be obtained at any shellfish agency, shellfisheries office or from the marine police. Charts are available online at nj.gov/dep/charts

Shellfish growing water classification charts are a graphic representation of the classification regulations and are provided for general information only. These charts are provided for the purpose of delineating shellfish growing water classifications, and are not intended to be used for navigational purposes. See N.J.A.C. 7:12-2 through 5 for the full text and area descriptions.

SHELLFISH CLASSIFICATION CODES

Approved Area

Waters where the harvest of shellfish is allowed.

Conditionally Approved

(January 1st - April 30th)

Waters which are classified as Conditionally Approved, and are in the closed status from May 1 through December 31 and are in the open status from January 1 through April 30, pursuant to N.J.A.C. 7:12-4.1(b).

Conditionally Approved

(November 1st - April 30th)

Waters which are classified as Conditionally Approved, and are in the closed status from May 1 through October 31 and are in the open status from November 1 through April 30, pursuant to N.J.A.C. 7:12-4.1(a).

Restricted Area

Waters where the harvest of shellfish is not allowed except as authorized by an issued permit in accordance with N.J.A.C 7:12-9.

Prohibited Area

Waters where the harvest of shellfish is not allowed.

Suspended Area

Waters where the harvest of shellfish is suspended pending the establishment by rule making of the appropriate classification.

HARVESTING REGULATIONS

Shellfish cannot be taken before sunrise or after sunset or on Sundays, except as provided in N.J.S.A. 50:2-11. Hard clams harvested must be at least 1 ½ inches in length. No one may take or catch more than 150 shellfish per day or sell or offer for sale shellfish, unless he or she is a holder of a Commercial Shellfish License. Pursuant to N.J.A.C. 7:12-8, any holder of a commercial shellfish license issued by the Department's Division of Fish and Wildlife shall complete the Department's shellfish harvester training.

Please note: N.J.A.C. 7:12-9 establishes permits for the harvest of shellfish from waters classified other than Approved, shellfish research, shellfish restoration and enhancement, toxins monitoring in shellfish, and shellfish aquaculture; please contact the Bureau of Marine Water Monitoring if you are interested in obtaining a permit at 609-748-2000.

ADDITIONAL AREAS WHERE HARVESTING IS NOT ALLOWED

Waters within all marinas, man-made lagoons, anchorages or other place where docking or mooring facilities are provided for boats.

A marina is any structure (docks, floating docks, piers, that supports five or more boats) built on or near the water which is utilized for docking, storing or otherwise mooring vessels and usually but not necessarily providing service to vessels such as repairing, fueling, security, or other related activities.

Leased Areas

Harvesting from leased shellfish lots is restricted to the lessee. These lots are delineated by stakes or set by the lease holder. Charts of leased areas may be examined at either the Nacote Creek or Bivalve Shellfish Offices.

CLOSED AREA SIGNS

To aid in the delineation of shellfish waters, certain areas are posted with the following signs:



PENALTY FOR ILLEGAL SHELLFISHING

1st Offense

Petty Disorderly Persons, Fines up to \$500 and/or up to 30 days imprisonment.

2nd Offense

Disorderly Persons, Fines up to \$1000 and/or up to 6 months imprisonment.

Additional penalties for illegal shellfishing can include the loss of the privilege to take oysters, clams or other shellfish, for a period of three years for a first offense, five years for a second offense, and 10 years for the third offense and any subsequent offense. Possible seizure and forfeiture of boat and equipment for any offense.

HELP TO PREVENT OVERBOARD DISCHARGES

Please be aware that the overboard discharges of sewage has been linked to illness outbreaks associated with shellfish. Human sewage shall not be discharged into shellfish growing waters at any time, pursuant to N.J.A.C. 7:12-8. If you have any questions about the location of Pumpout Stations, please call the New Jersey Division of Fish and Wildlife at (609) 748-2056. To report an environmental incident impacting NJ, call 1-877-WARNDEP

Shellfish Harvest, Handling, and Transport Requirements for Commercial Shellfish License Holders

The following are requirements for commercial shellfish license holders for the harvest, handling, and transport of shellfish in order to ensure harvested shellfish are safe for human consumption, for a full description of the requirements please see N.J.A.C. 7:12-8. Any person who violates any requirement of N.J.A.C. 7:12-8 may be subject to prosecution and/or penalties pursuant to N.J.S.A. 23:2B-14, 50:1-5 et seq., 58:24-9, 58:24-10, 58:24-10.1, and 2C:64-1 et seq., including the forfeiture of shellfish, which may be seized and returned to the water or destroyed.

Shellfish harvester training requirements

- (a) As part of any application for a commercial shellfish license, the applicant shall certify that he or she has completed the shellfish harvester training within the past two years available online at nj.gov/dep/bmw/.

Requirements for vessels used to harvest and/or transport shellfish

- (a) Any commercial shellfish license holder who harvests and/or transports shellfish shall do so on vessels which meet the requirements at (a)1 through 5 below. In addition, the requirements at (a)6 and 7 below apply if the vessel is used to harvest and/or transport shellfish for direct marketing.
1. Decks and storage bins shall be constructed and located to prevent bilge water or polluted overboard water from coming into contact with the shellfish.
 2. Bilge pump discharges shall be located so that the discharge does not contaminate shellfish.
 3. Containers used for storing shellfish shall be clean and fabricated from safe materials.
 4. Effective coverings shall be provided on harvest boats to protect shellfish from exposure to hot sun, birds, and other adverse conditions that may contaminate or cause the deterioration or decomposition of the shellfish.
 5. Cats, dogs, and other animals shall not be allowed on vessels.
 6. Decks and storage bins used in the harvest and/or transport of shellfish shall be kept clean with potable water or water classified as Approved or Conditionally Approved in the open status, and provided with effective drainage.
 7. Vessels and all other equipment coming in contact with shellfish harvested from waters other than Approved shall be thoroughly cleaned before the vessels and equipment are used to handle and/or transport shellfish for direct marketing.
- (b) Human sewage shall not be discharged into shellfish growing waters at any time. Vessels used for the harvest of shellfish shall have a Type III marine sanitation device onboard. A Type III marine sanitation device means, pursuant to 33 CFR 159.3, a device that is designed to prevent the overboard discharge of treated or untreated sewage or any waste derived from sewage. A Type III marine sanitation device shall:
1. Be used only for the purpose intended;
 2. Be secured while on board and located to prevent contamination of shellfish by spillage or leakage;
 3. Be emptied only into a sewage disposal system;
 4. Be cleaned before being returned to the vessel; and
 5. Not be cleaned in equipment used for washing or processing food.

Requirement to wash shellfish

- (a) A commercial shellfish license holder harvesting shellfish shall wash the shellfish free of bottom sediments as soon after harvesting as practicable.
- (b) Shellfish shall be washed using water only from a potable water source or from waters classified as Approved or Conditionally Approved in the open status, except shellfish harvested for depuration which shall be washed in accordance with the Department of Health's rules at N.J.A.C. 8:13.

Requirement to tag containers of shellfish

- (a) A commercial shellfish license holder harvesting shellfish shall affix to each container of shellfish at the harvest location a pre-printed tag with the information required at N.J.A.C. 7:12-8.5(b). The tag shall remain affixed to the container during transport to the certified dealer. Shellfish harvested on different dates or from different harvest locations shall not be commingled in a single container with a single tag.
 - 1. When the shellfish license holder harvesting shellfish is a certified dealer, the tag affixed to the container may be either a harvester tag or a dealer tag that meets the requirements established by the Department of Health pursuant to N.J.A.C. 8:13.
- (b) If the shellfish is removed from the original tagged container, a tag that meets the requirements at N.J.A.C. 7:12-8.5(b) shall be affixed to the new container.

***Vibrio* Control Plan**

- (a) Each year the Department's Bureau of Marine Water Monitoring and the Department of Health develop a ***Vibrio*** Control Plan. This plan is in effect from June 1st to August 31st. Commercial harvesters are subject to the conditions of the plan. A copy of the plan is available at nj.gov/dep/bmw/ or by calling the Bureau at 609-748-2000.

SUMMARY OF CHANGES

The Department of Environmental Protection's Bureau of Marine Water Monitoring (the Bureau) is responsible for classifying shellfish growing waters throughout the state of New Jersey, pursuant to N.J.S.A. 58:24-1 *et seq.* The Bureau classifies shellfish growing areas based on water quality data and shoreline surveys described in FDA's National Shellfish Sanitation Program's Model Ordinance.

To protect public health and safety, the Department, pursuant to N.J.A.C. 7:12-1.4(b), will immediately suspend harvest in waters' that do not meet standards for that particular waters' classification. Based on the Bureau's assessment to-date, approximately 10,124.8 acres of shellfish growing waters are suspended for harvesting. The names of these waterways and the numbers of acres being suspended are listed below in general terms. Reclassification of NJ water's for shellfish harvest must be done in a formal rulemaking process.

Shellfish growing water classification charts are a graphical representation of the classification regulations and are provided for general information only, see N.J.A.C. 7:12-2 through 5 for full text and area descriptions.

Suspension of Harvest - Effective Immediately

<u>Chart #</u>	<u>Area</u>	<u>Current Classification</u>	<u>Revised Status</u>	<u>Acres</u>
3	Navesink River	Conditionally Approved	Suspended	1.6
4	Shark River	Restricted	Suspended	420.4
5/6	Barnegat Bay	Conditionally Approved	Suspended	316.7
5/6	Barnegat Bay	Approved	Suspended	1763.5
6	Toms River	Restricted	Suspended	83.9
7	Barnegat Bay Tributary/Sunrise Beach	Approved	Suspended	43.3
7	Barnegat Bay/Barnegat Beach	Conditionally Approved	Suspended	171.7
9/10	Little Egg Harbor	Restricted	Suspended	123.9
9/10	Little Egg Harbor	Approved	Suspended	267.6
12	Reed Bay	Approved	Suspended	96.1
12	Roundabout Thorofare/Stake Thorofare	Approved	Suspended	52.8
13	Lakes Bay/Lakes Bay Tributaries	Conditionally Approved	Suspended	1342.5
13	Shelter Island Bay	Approved	Suspended	497.3
15	Ludlam Bay/Maple Swamp	Approved	Suspended	268.1
15	Townsend Channel/Townsend Channel Tributaries	Approved	Suspended	27.6
15	Townsend Channel	Conditionally Approved	Suspended	38.6
15	Middle Thorofare	Approved	Suspended	72.0
15	Leonard Thorofare	Conditionally Approved	Suspended	81.2
16	Great Sound/Cresse Thorofare/Gull Island Thorofare	Approved	Suspended	426.6
16/17	Grassy Sound	Approved	Suspended	520.2
16/17	Richardson Sound	Approved	Suspended	125.9

Suspension of Harvest - Effective Immediately (continue)

<u>Chart #</u>	<u>Area</u>	<u>Current Classification</u>	<u>Revised Status</u>	<u>Acres</u>
18	Delaware Bay	Approved	Suspended	89.3
18	Maurice River	Conditionally Approved	Suspended	302.5
18/19	Delaware Bay-Gandy's Beach	Approved	Suspended	163.3
19	Delaware Bay-Coastal Stow Creek	Approved	Suspended	2665.5
19	Delaware Bay-Coastal Stow Creek	Conditionally Approved	Suspended	252.0

Classification Upgrades - Effective Pending Regulation Adoption

The following upgrades are proposed but not in effect until they are adopted into regulation. These classification changes are subject to change based on continual water quality results.

<u>Chart #</u>	<u>Area</u>	<u>Action</u>	<u>Acres</u>
2	Atlantic Ocean-Sandy Hook	Prohibited to Restricted	3,213.5
2	Atlantic Ocean-Sandy Hook to Sea Bright	Prohibited to Approved	15,558.6
3	Atlantic Ocean-Sea Bright to Long Branch	Prohibited to Approved	4,408.7
3	Shrewsbury River	Restricted to Conditionally Approved	582.6
4	Atlantic Ocean-Long Branch to Spring Lake	Prohibited to Approved	3,228.2
5	Atlantic Ocean-Spring Lake to Mantoloking	Prohibited to Approved	1,416.9
10	Little Egg Harbor Tributaries	Restricted To Conditionally Approved	37.2
10	Little Egg Harbor Tributaries	Conditionally Approved to Approved	44.3
12/13	Atlantic Ocean-Atlantic City	Prohibited to Approved	396.0
13/14	Atlantic Ocean-Ocean City	Prohibited to Approved	250.2
15	Atlantic Ocean-Sea Isle City	Prohibited to Approved	25.2
16	Atlantic Ocean-Stone Harbor to North Wildwood	Prohibited to Approved	844.2
17	Atlantic Ocean-Cape May City	Prohibited to Approved	624.3
17	Jarvis Sound/Swain Channel Thorofare	Restricted to Conditionally Approved	266.8
17	Jarvis Sound	Conditionally Approved (Jan) to Conditionally Approved (Nov)	623.7
17	Richardson Channel/Grassy Sound Channel	Prohibited to Conditionally Approved	277.0
18	Delaware Bay-Cape Canal	Prohibited to Approved	547.2
19	Delaware Bay	Restricted to Approved	8552.7

COMMERCIALLY IMPORTANT SHELLFISH NATIVE TO NEW JERSEY



Hard Clam
(*Mercenaria mercenaria*)



Surf Clam
(*Spisula solidissima*)



Soft Shell Clam
(*Mya arenaria*)



Ocean Quahog
(*Arctica islandica*)



Blue Mussel
(*Mytilus edulis*)



Eastern Oyster
(*Crassostrea virginica*)

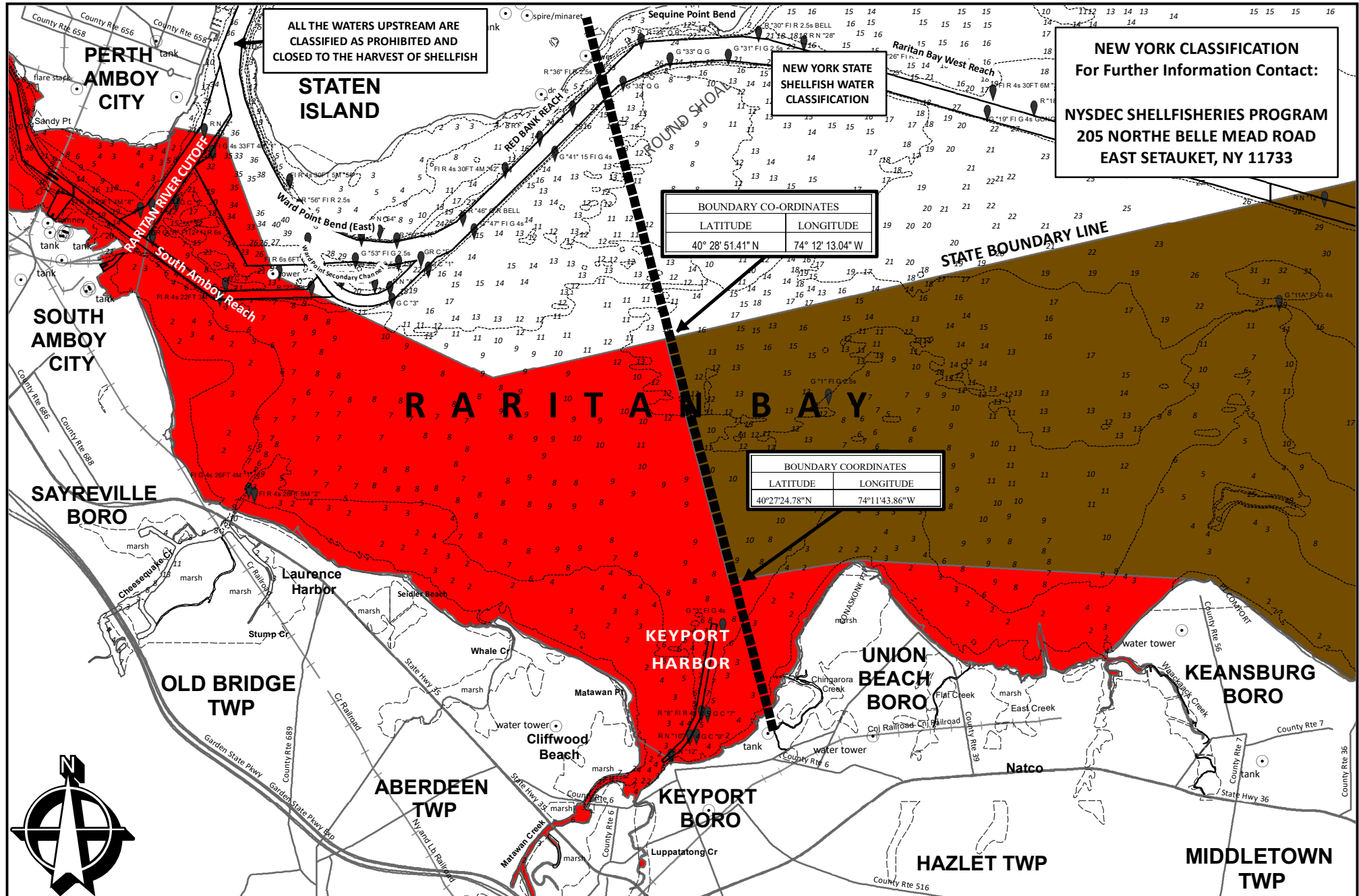
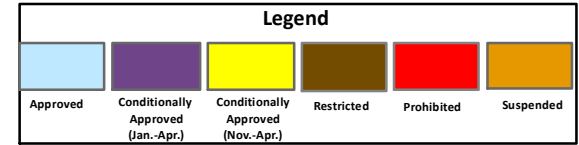


Sea Scallop
(*Placopecten magellanicus*)

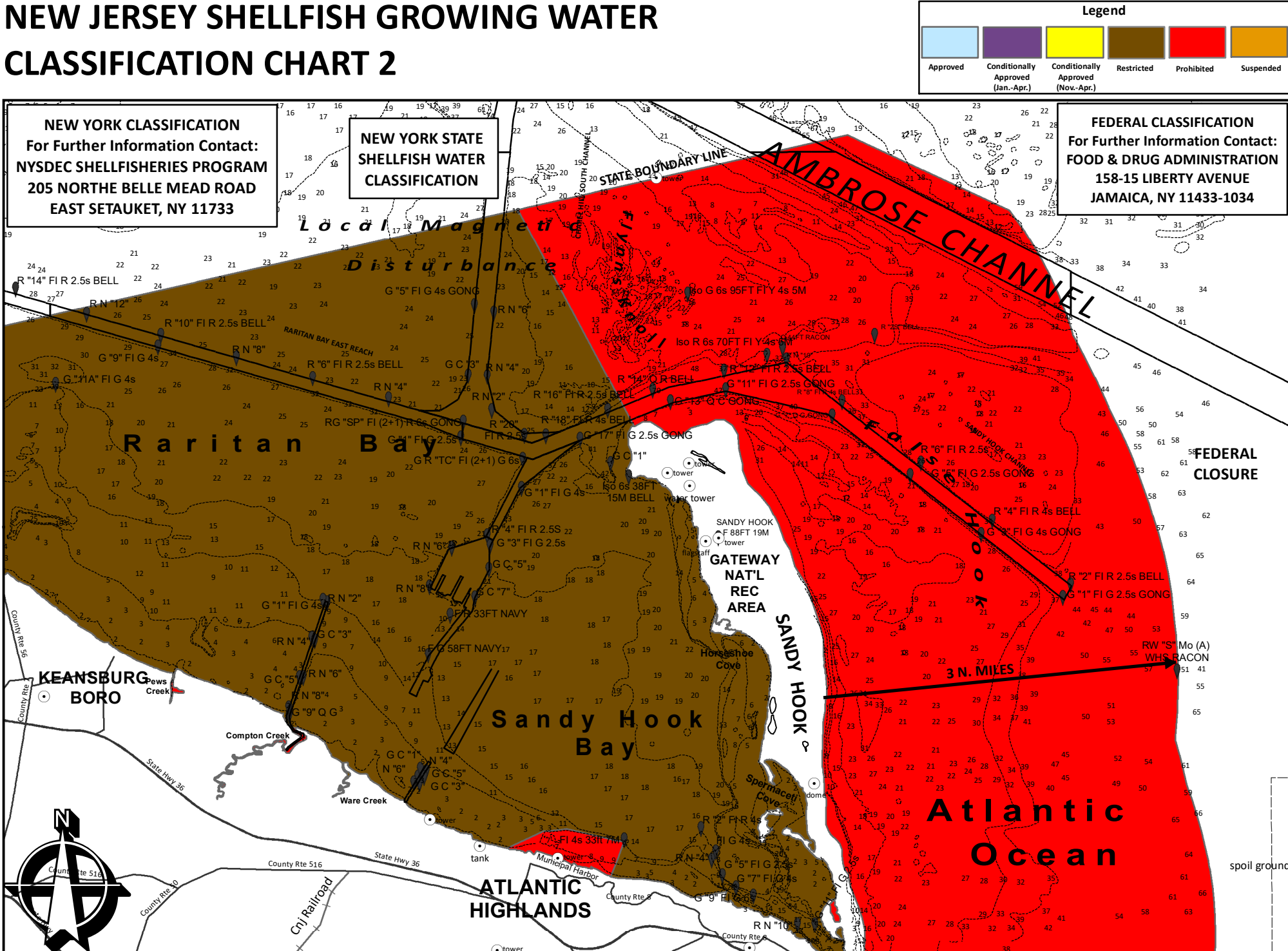


Bay Scallop
(*Argopecten irradians*)

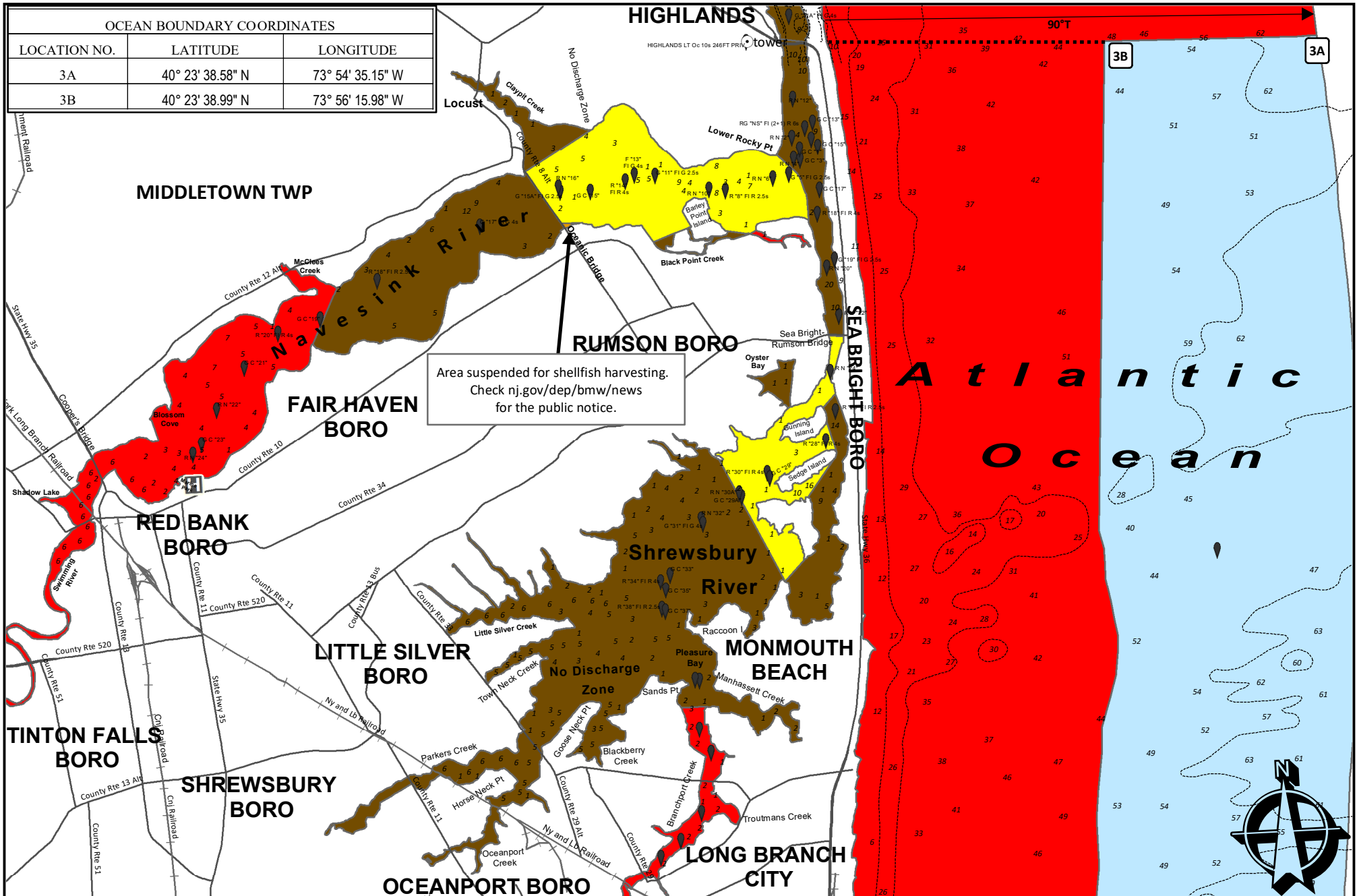
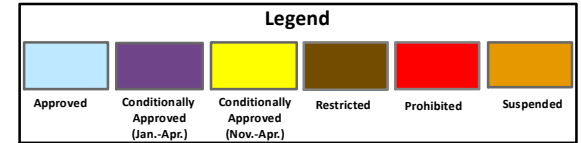
NEW JERSEY SHELLFISH GROWING WATER CLASSIFICATION CHART 1



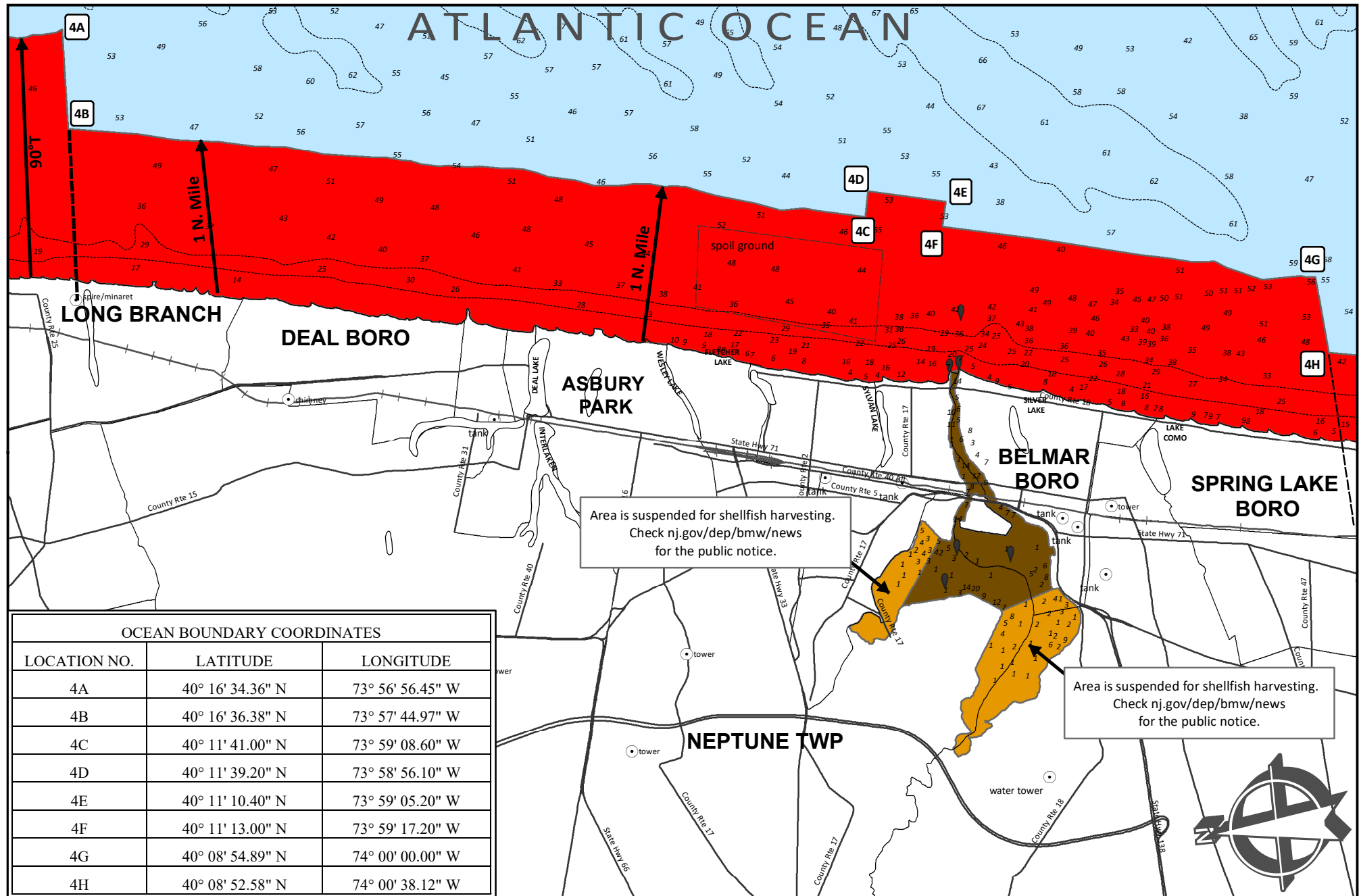
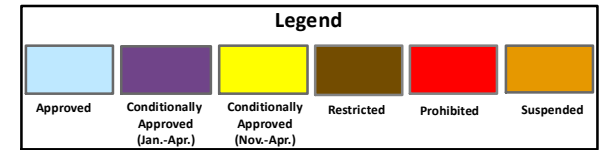
NEW JERSEY SHELLFISH GROWING WATER CLASSIFICATION CHART 2



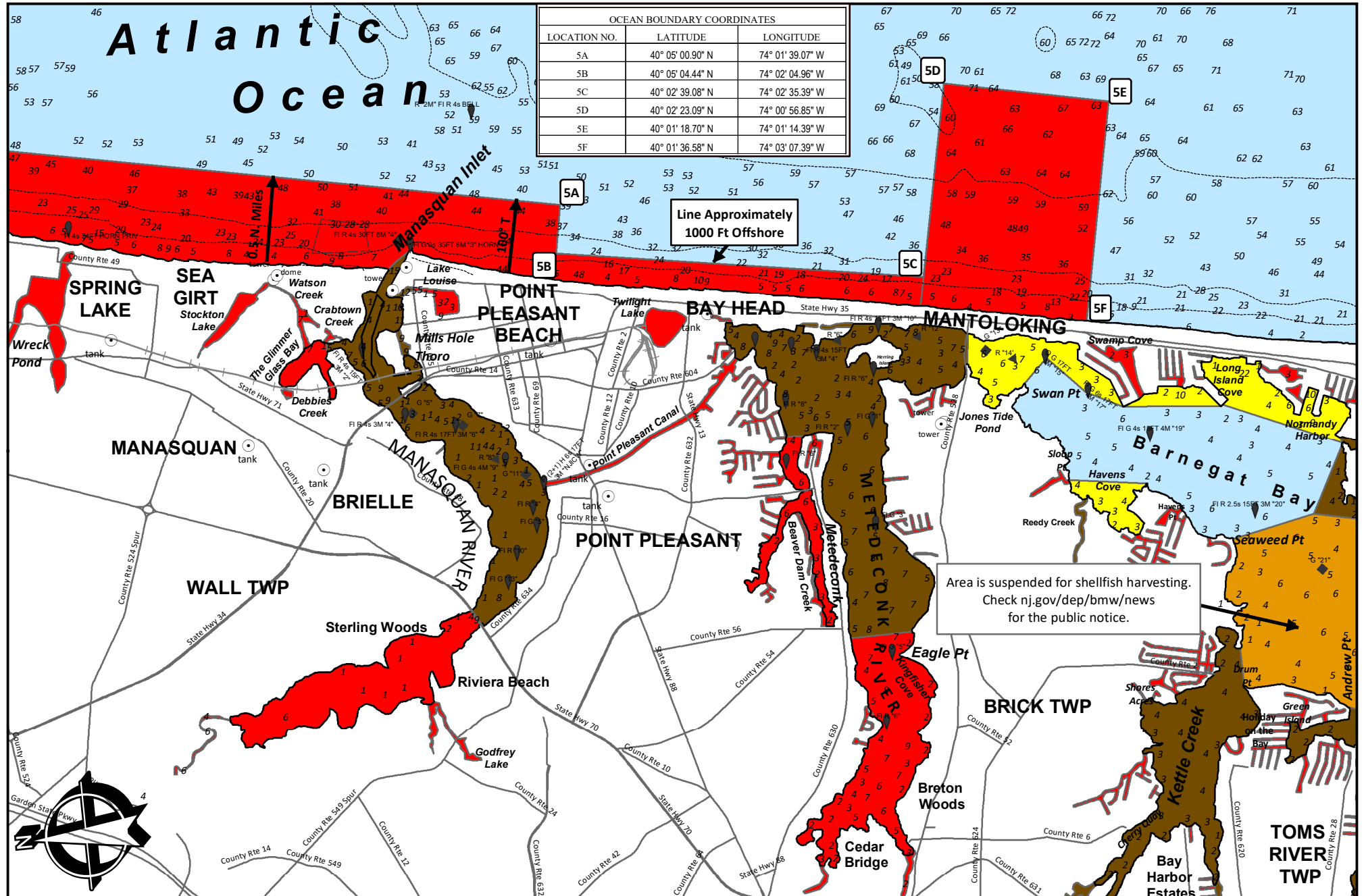
NEW JERSEY SHELLFISH GROWING WATER CLASSIFICATION CHART 3



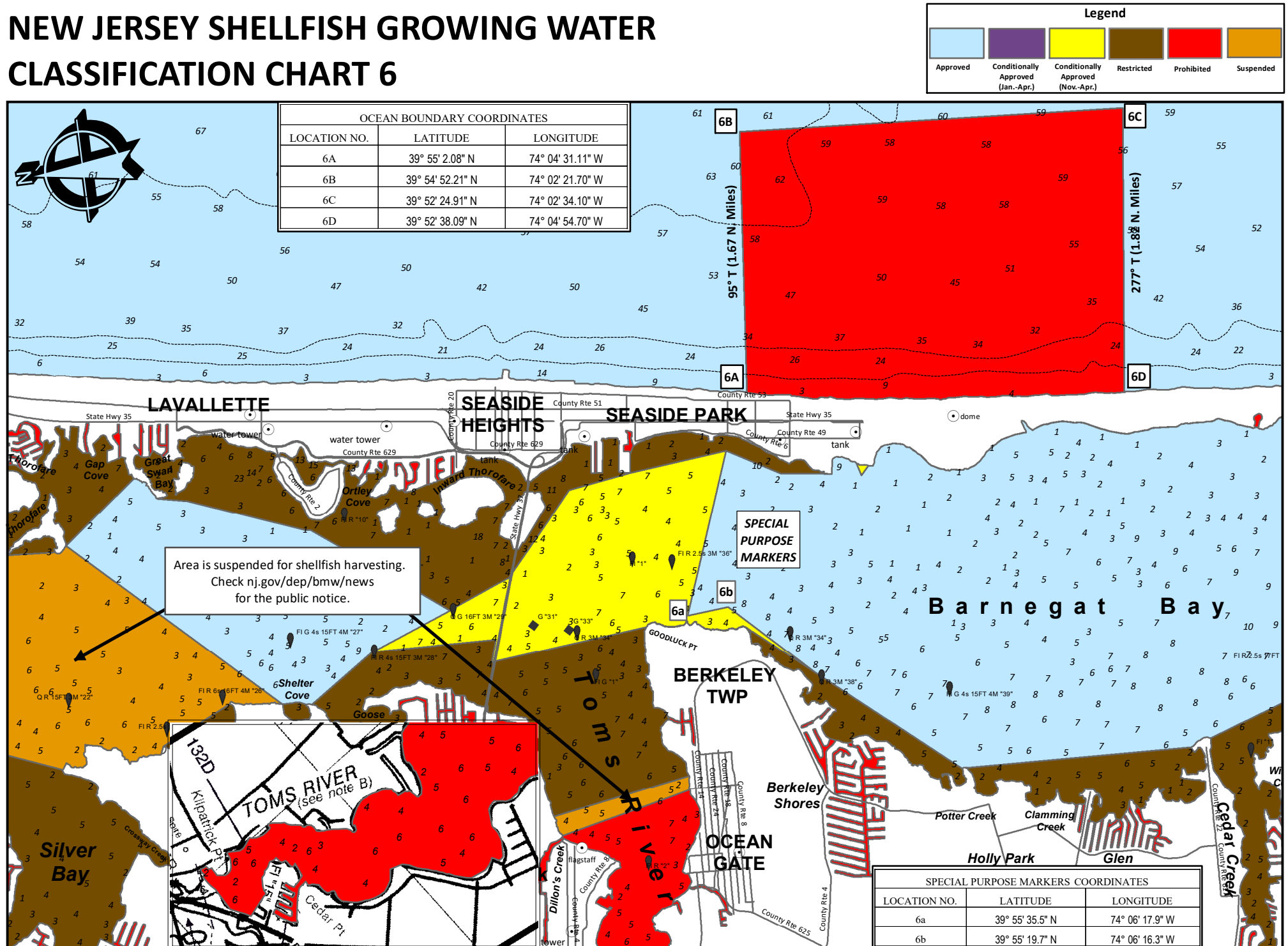
NEW JERSEY SHELLFISH GROWING WATER CLASSIFICATION CHART 4



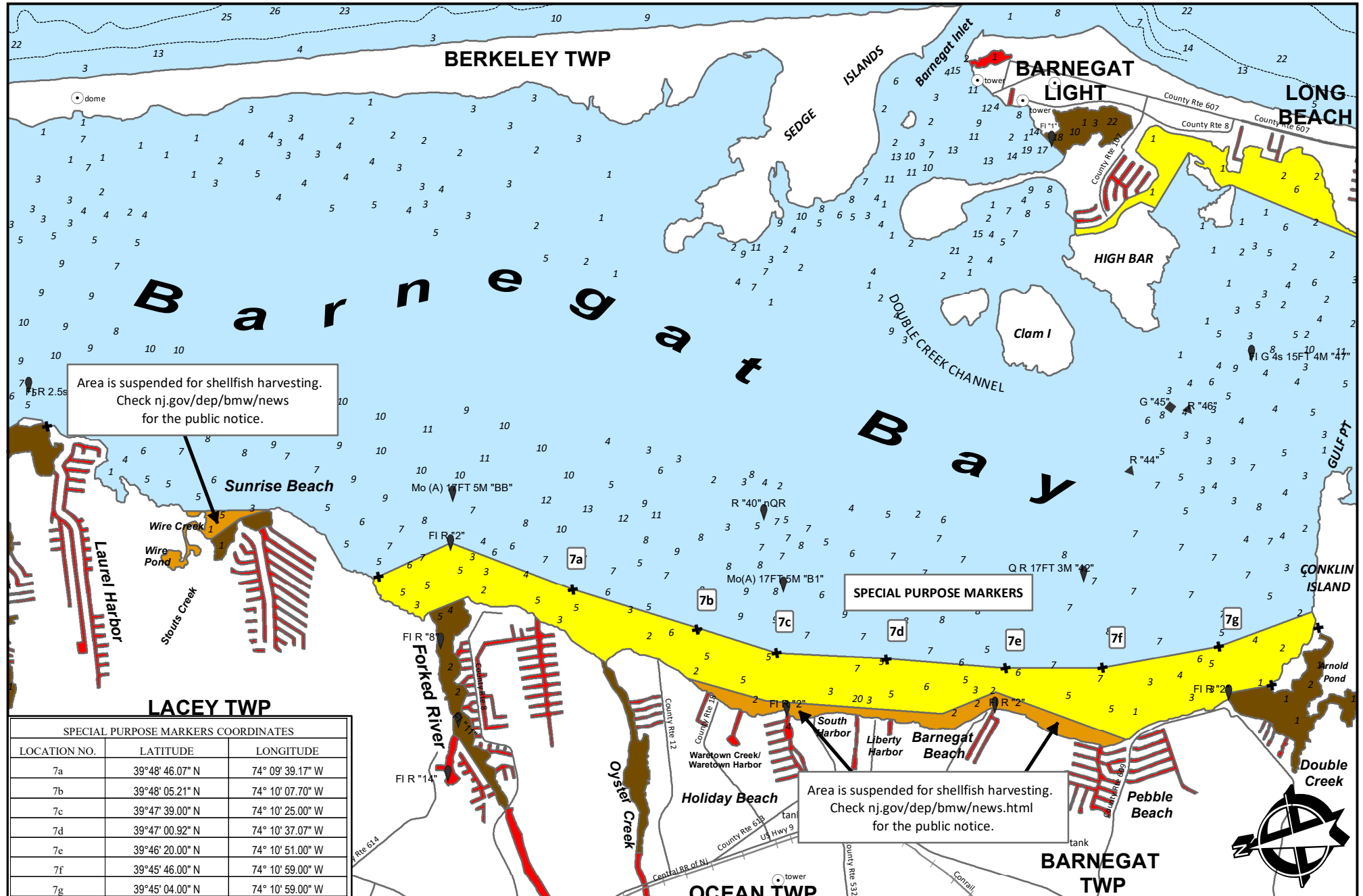
NEW JERSEY SHELLFISH GROWING WATER CLASSIFICATION CHART 5



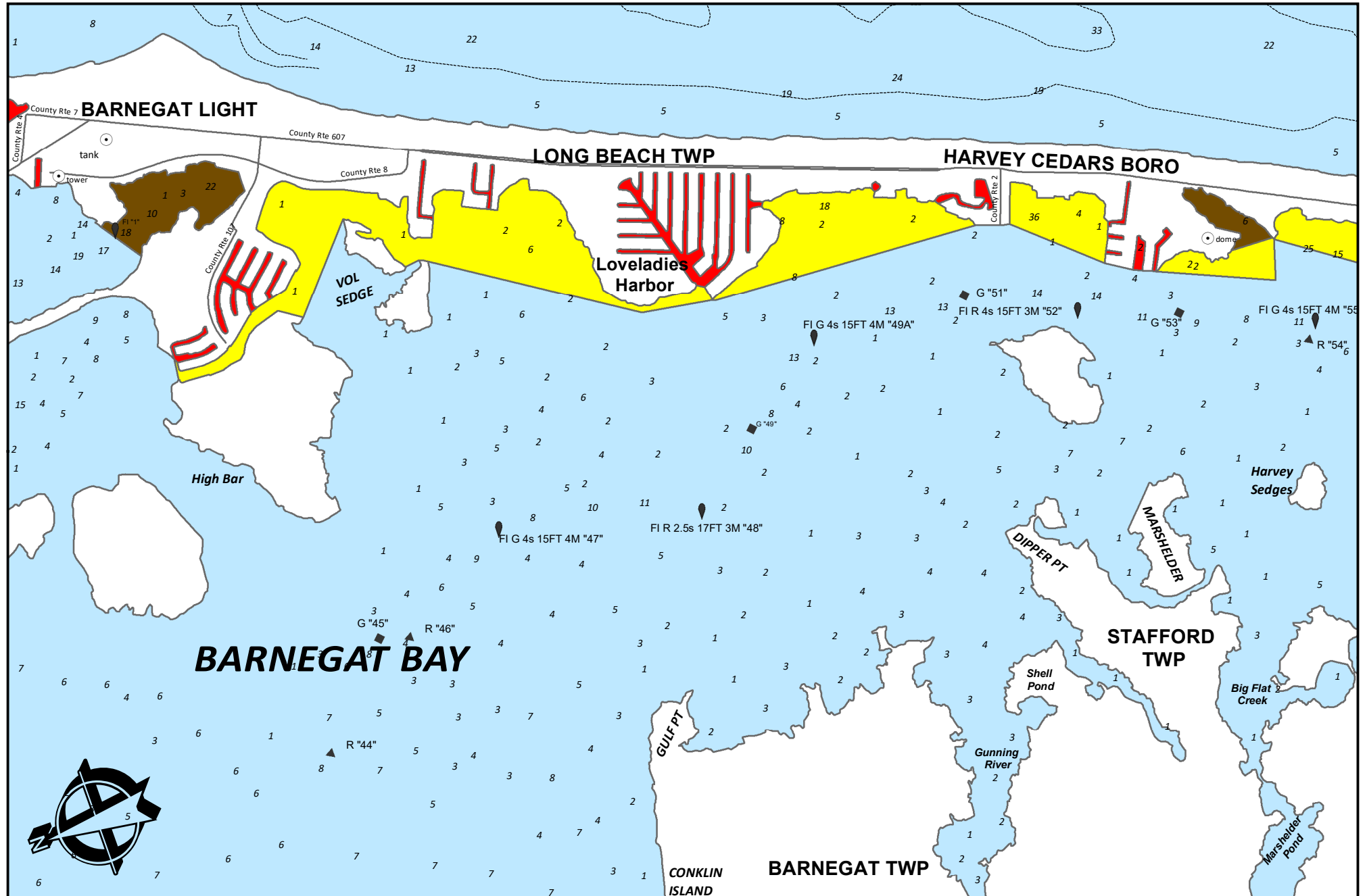
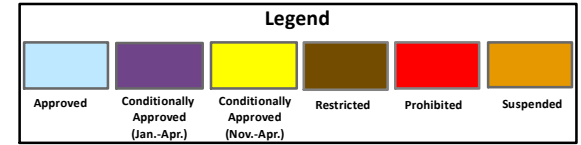
NEW JERSEY SHELLFISH GROWING WATER CLASSIFICATION CHART 6



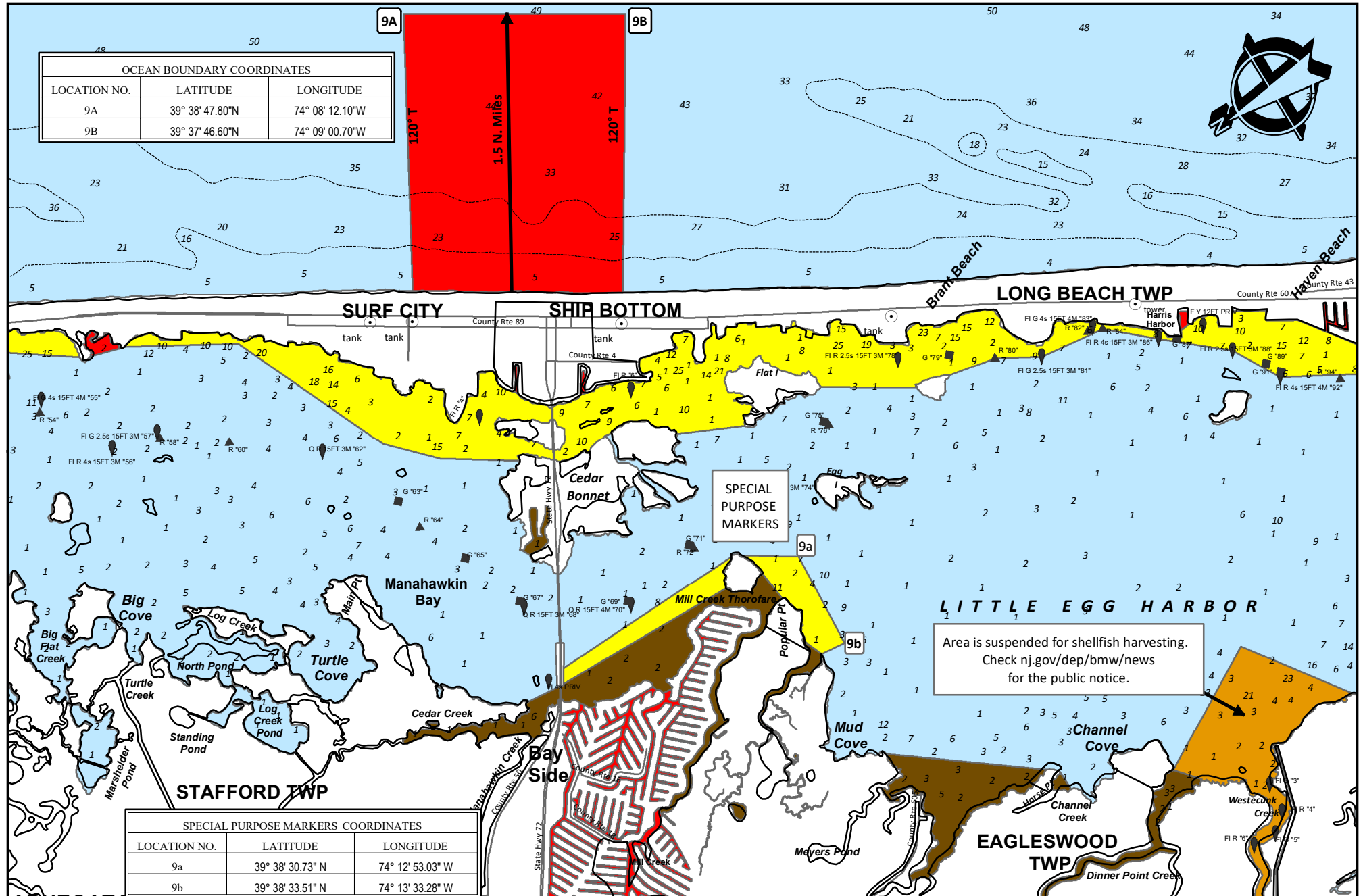
NEW JERSEY SHELLFISH GROWING WATER CLASSIFICATION CHART 7



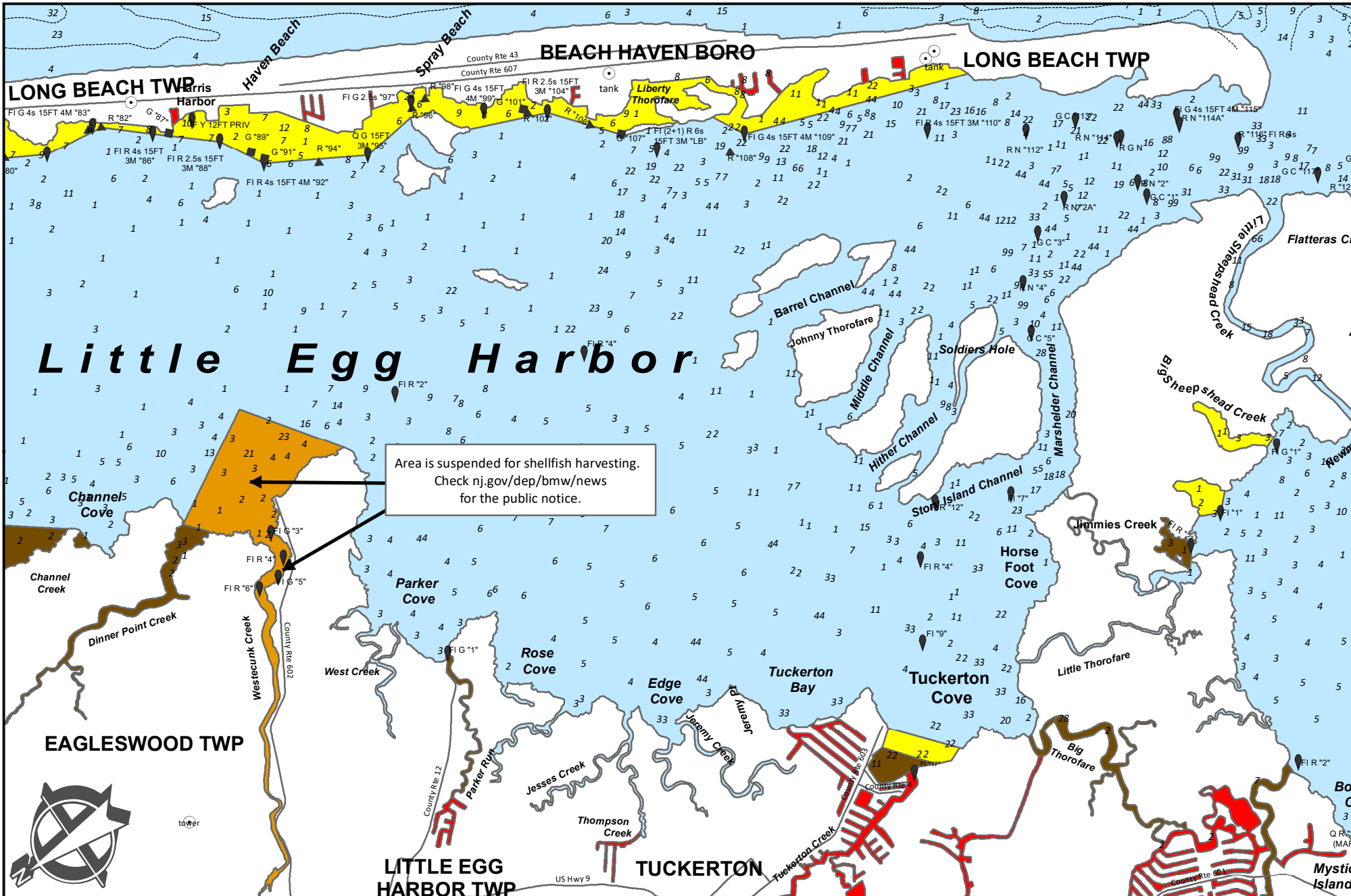
NEW JERSEY SHELLFISH GROWING WATER CLASSIFICATION CHART 8



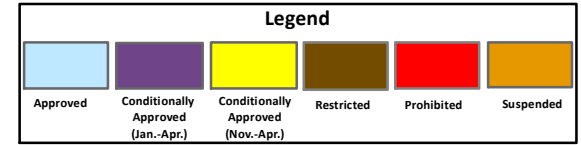
NEW JERSEY SHELLFISH GROWING WATER CLASSIFICATION CHART 9



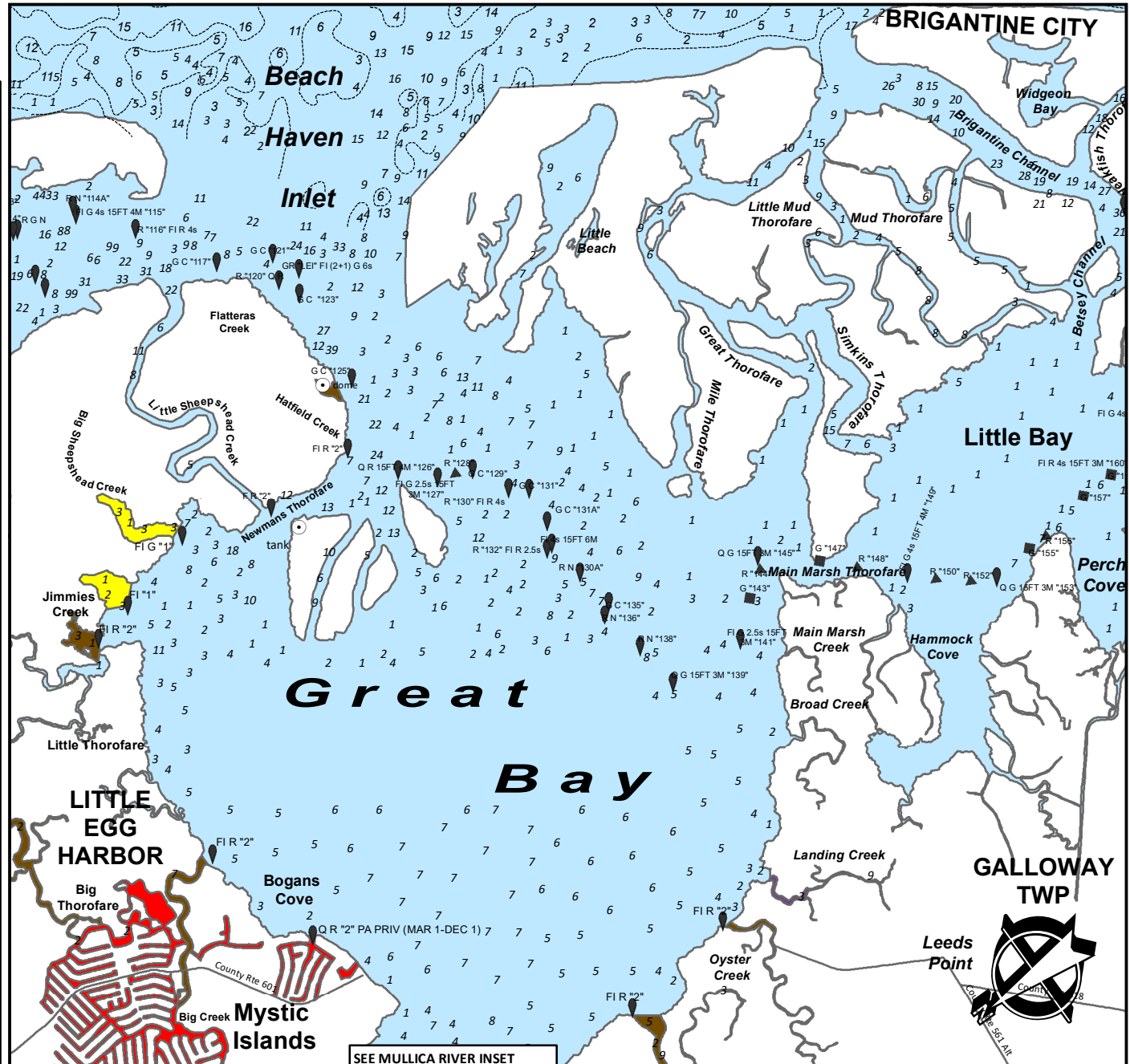
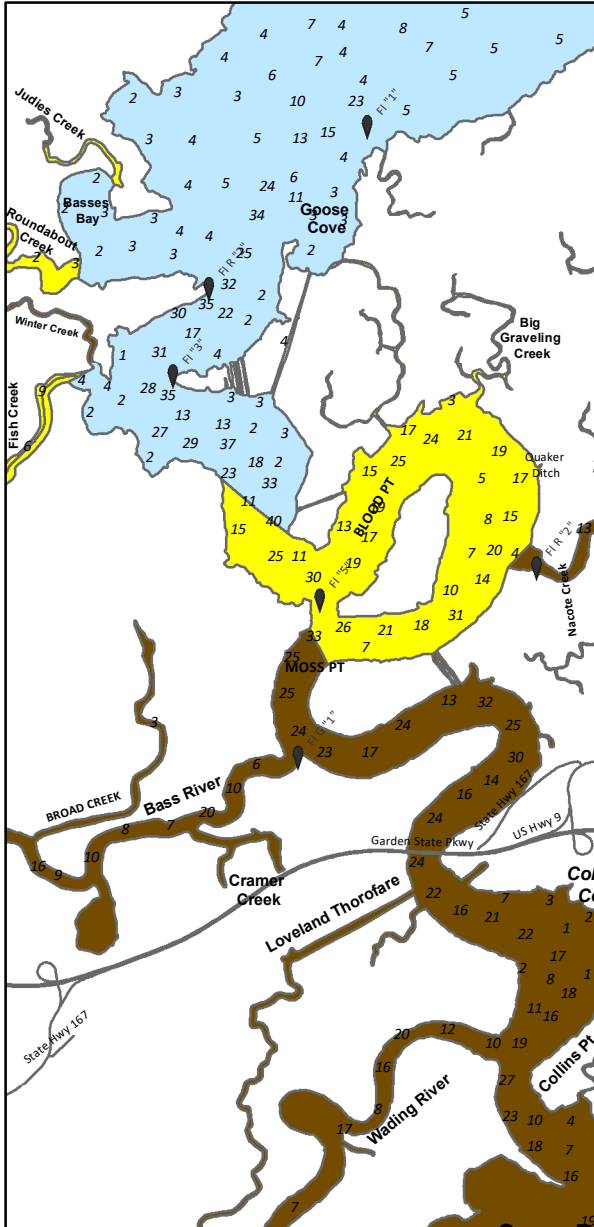
NEW JERSEY SHELLFISH GROWING WATER CLASSIFICATION CHART 10



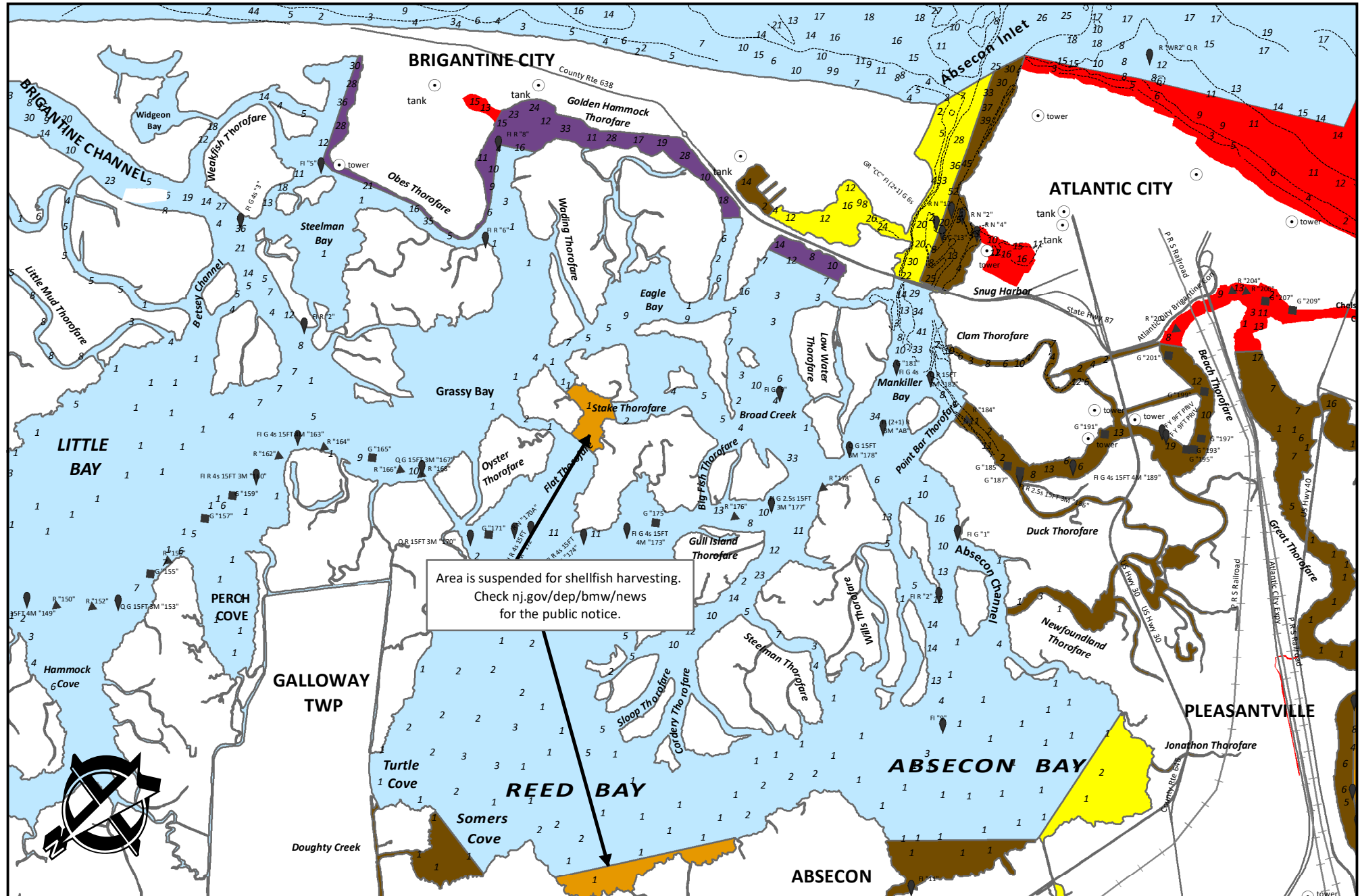
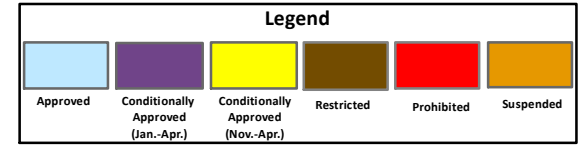
NEW JERSEY SHELLFISH GROWING WATER CLASSIFICATION CHART 11



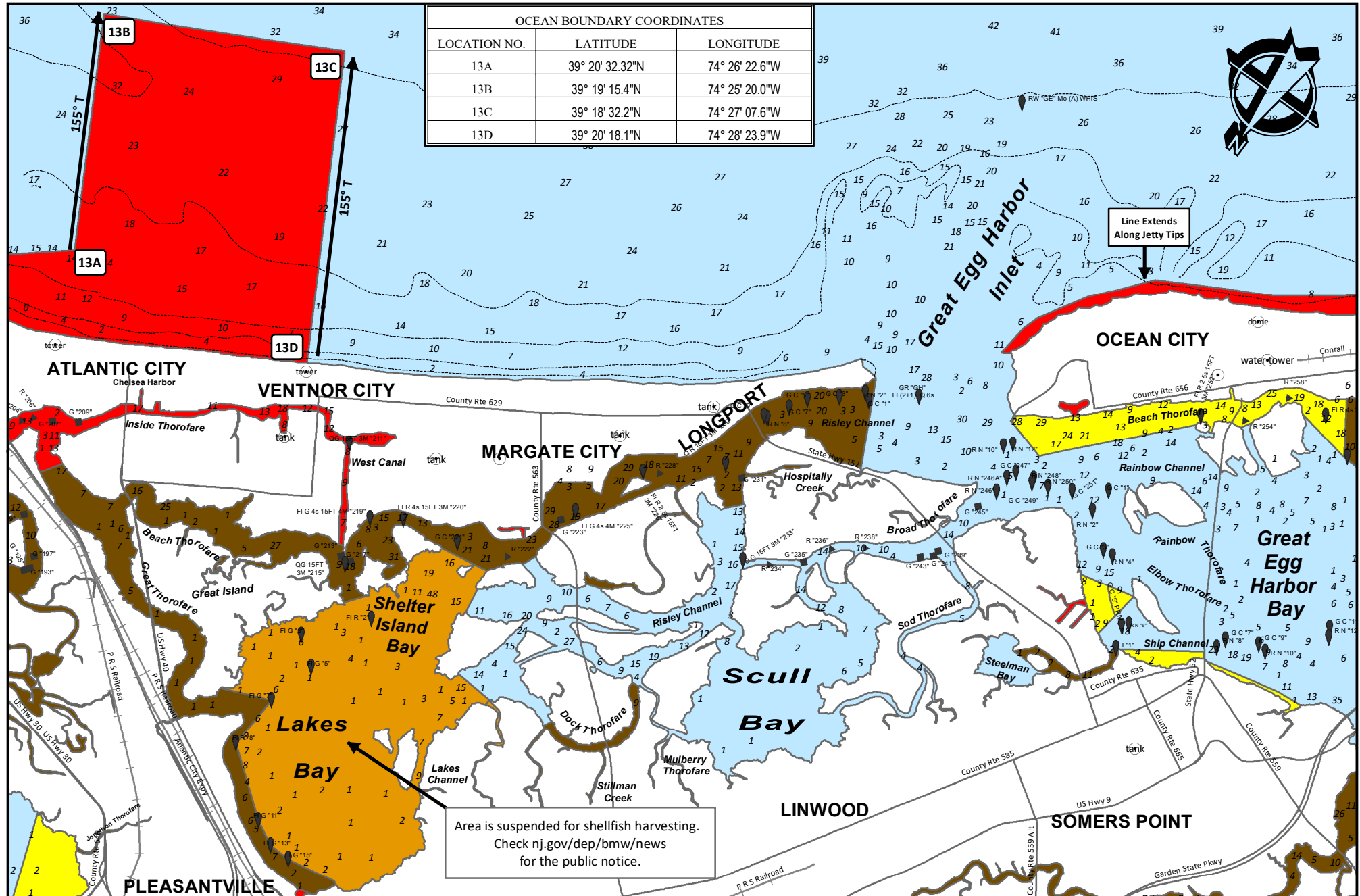
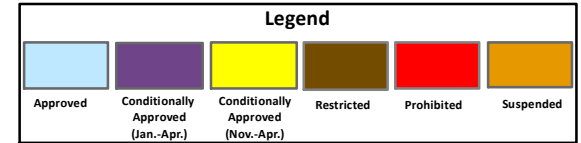
MULLICA RIVER INSET



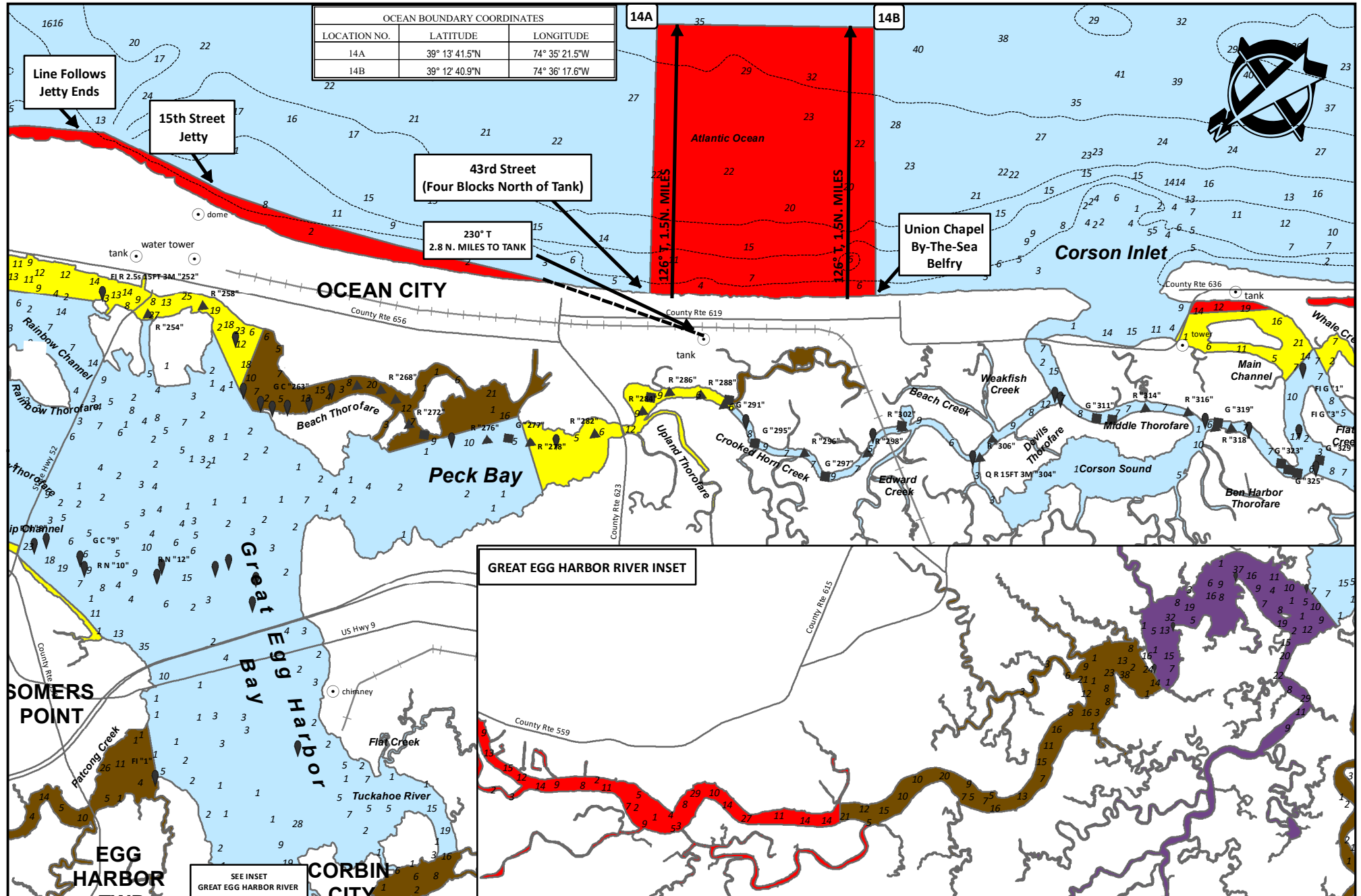
NEW JERSEY SHELLFISH GROWING WATER CLASSIFICATION CHART 12



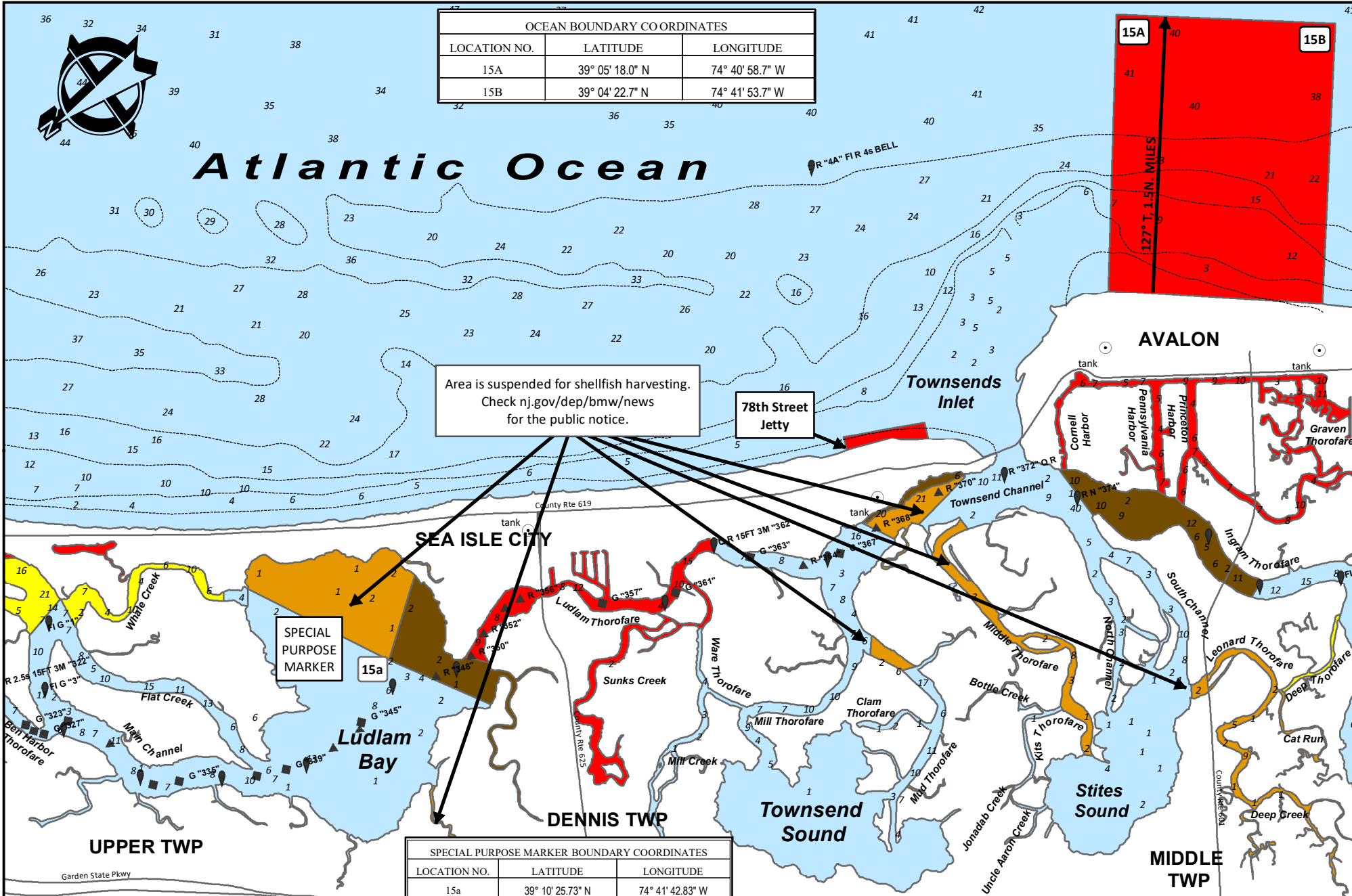
NEW JERSEY SHELLFISH GROWING WATER CLASSIFICATION CHART 13



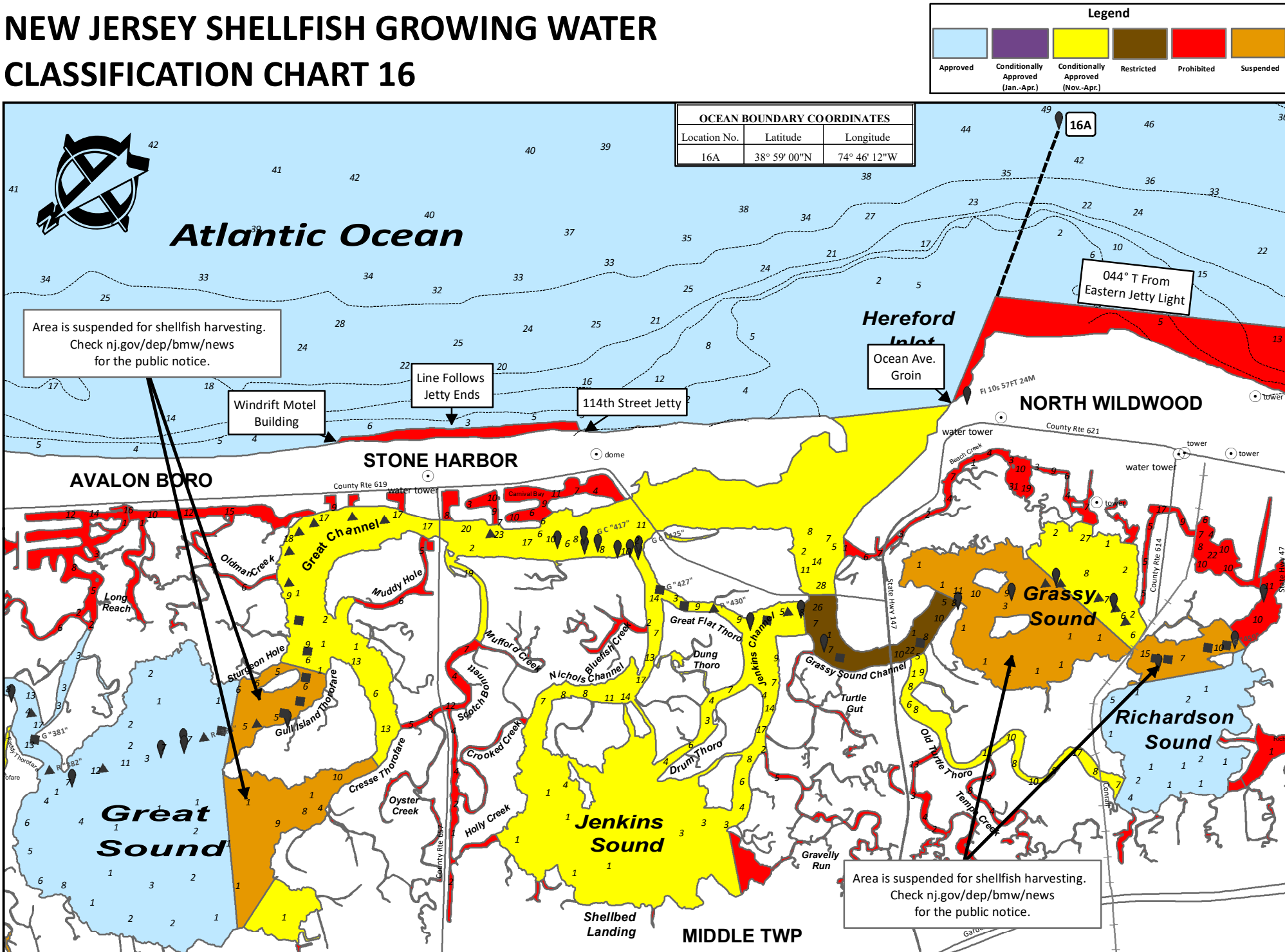
NEW JERSEY SHELLFISH GROWING WATER CLASSIFICATION CHART 14



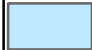





NEW JERSEY SHELLFISH GROWING WATER CLASSIFICATION CHART 15

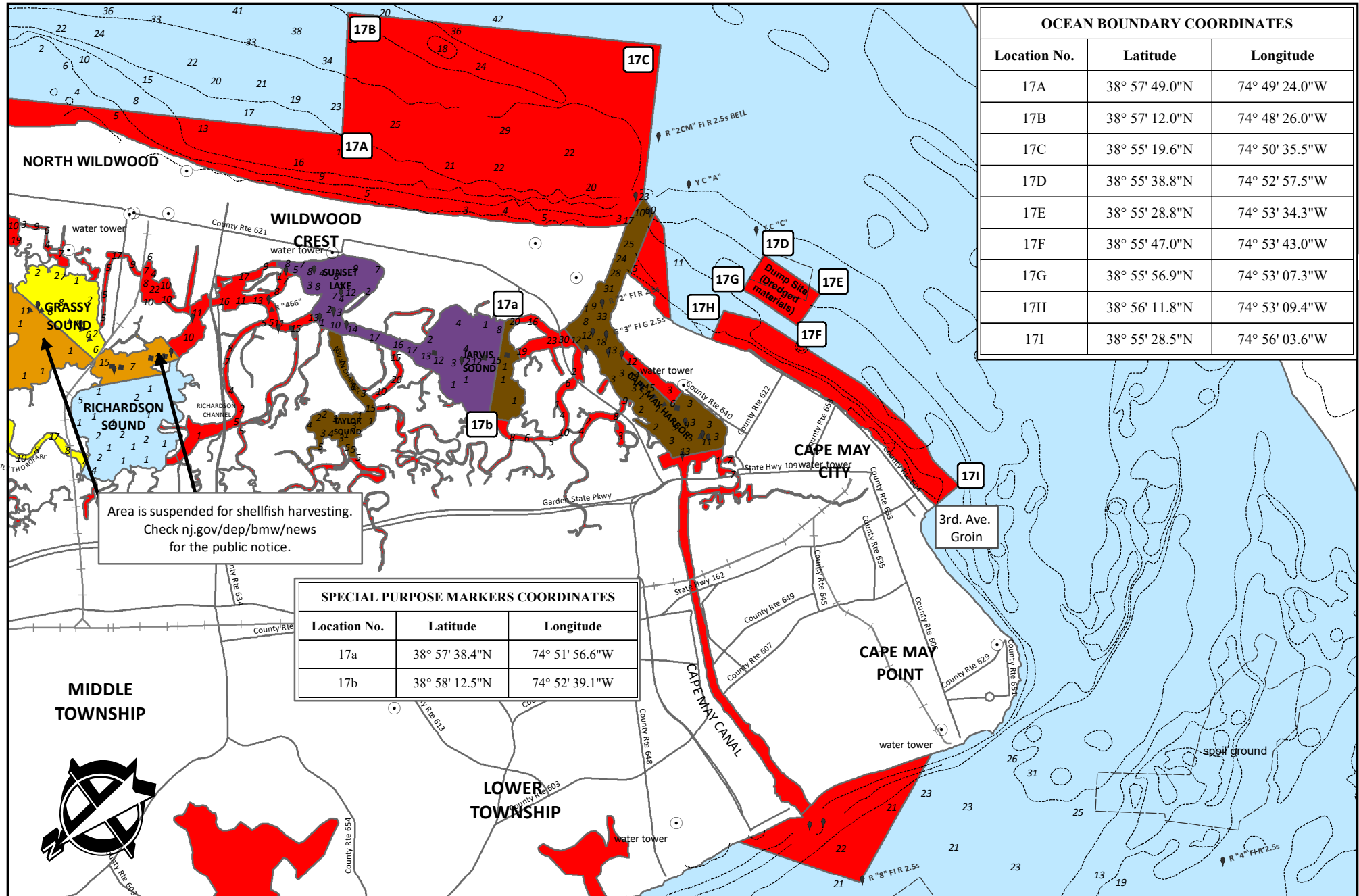


NEW JERSEY SHELLFISH GROWING WATER CLASSIFICATION CHART 16

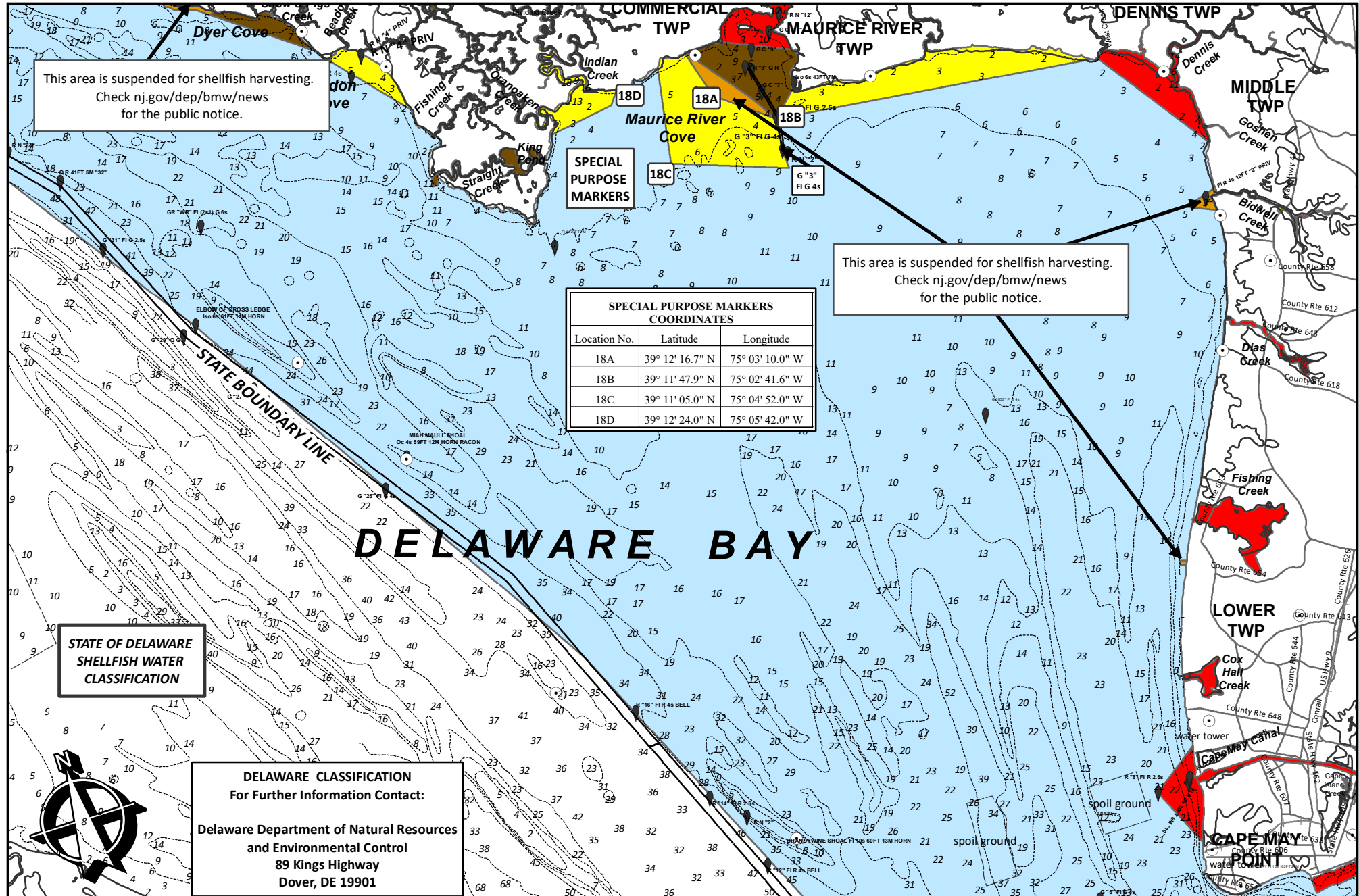
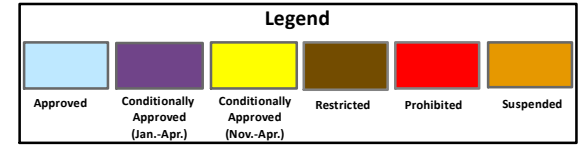


NEW JERSEY SHELLFISH GROWING WATER CLASSIFICATION CHART 17

Legend					
					
Approved	Conditionally Approved (Jan.-Apr.)	Conditionally Approved (Nov.-Apr.)	Restricted	Prohibited	Suspended



NEW JERSEY SHELLFISH GROWING WATER CLASSIFICATION CHART 18



NEW JERSEY SHELLFISH GROWING WATER CLASSIFICATION CHART 19

