



State of New Jersey

DEPARTMENT OF ENVIRONMENTAL PROTECTION
P.O. BOX 402
401 East State Street
TRENTON, NJ 08625-0402

CHRIS CHRISTIE
Governor

BOB MARTIN
Commissioner

KIM GUADAGNO
Lt. Governor

Public Notice of the Suspension of Harvest from Shellfish Beds Dangerous to Health

Shellfish growing areas are routinely monitored throughout New Jersey; the Department's goal is to ensure the wholesomeness of shellfish intended for human consumption. Analysis of water samples indicate that portions of the Shark River no longer meet the current shellfish growing water classification of Restricted set forth in the Shellfish Growing Water Classification rules at N.J.A.C. 7:12. Over the last year, the Department has been diligently working with local municipalities to help identify potential sources of pollution with the goal of improving water quality within the Shark River.

Accordingly, pursuant to N.J.A.C. 7:12-1.4(b) and the statutory authority granted the Department of Environmental Protection at N.J.S.A. 58:24-2 to ensure that the public health is not at risk from the consumption of shellfish that may have been subjected to pollution or other condition that may render the shellfish dangerous to health, I hereby immediately suspend the harvest of shellfish from the following waters, as further described below:

Shark River

In accordance with N.J.A.C. 7:12-1.3, the waters in the Shark River are classified as Restricted. To be classified as Restricted, the bacteriological quality of water samples at every sample station in the growing area shall not exceed the fecal coliform median or geometric mean of 88 CFU per 100 ml and the estimated 90th percentile shall not exceed 163 CFU per 100 ml. See N.J.A.C. 7:12-1.3(a), incorporating by reference the National Shellfish Sanitation Program (NSSP), Guide for the Control of Molluscan Shellfish, 2015 Revision, available at the U.S. Food and Drug Administration website,

<http://www.fda.gov/Food/GuidanceRegulation/FederalStateFoodPrograms/ucm2006754.htm>.

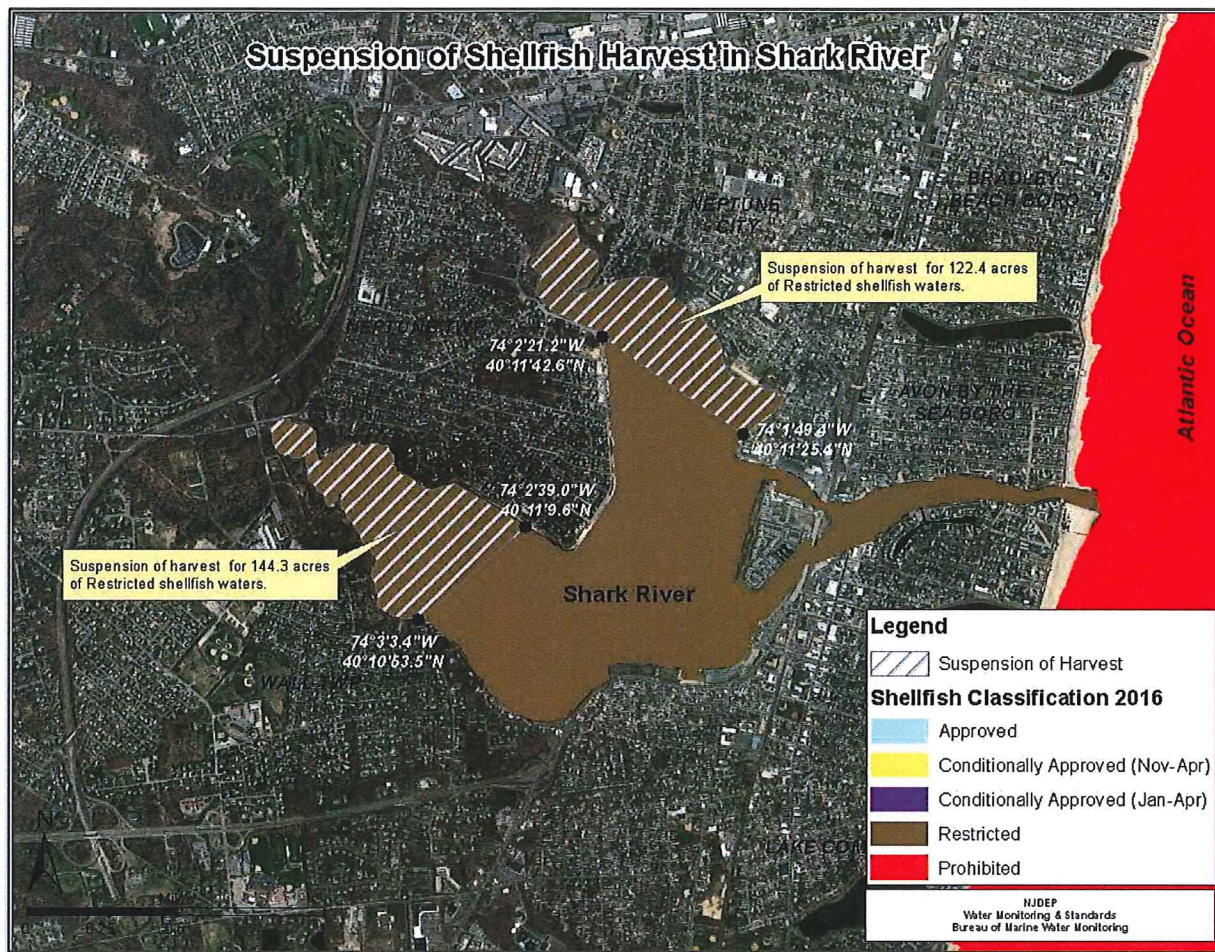
Over 800 water samples were collected in the Shark River over the past four years; data indicates that stations do not consistently meet the fecal coliform standards for Restricted.

The suspension of harvest in the Shark River shall take effect immediately and continue pending the establishment by rulemaking of the appropriate classification and boundaries of the waters so classified, as provided by N.J.A.C. 7:12-1.4, or until further determination by the Department that the particular area of water subject to the suspension meets the standards for its current Restricted classification.

Shark River – 266.7 acres

The waters of Shark River and tributaries north of a line stating at a point with coordinates of latitude 40 degrees 11 minutes 25.4 seconds N., and longitude 74 degrees 1 minute 49.4 seconds W., then bearing 125 degrees T to a point on the western shoreline with coordinates of latitude 40 degrees 11 minutes 42.6 seconds N., and longitude 74 degrees 2 minutes 21.2 seconds W., and terminating.

The waters of Shark River and tributaries west of a line stating at a point with coordinates of latitude 40 degrees 11 minutes 9.6 seconds N., and longitude 74 degrees 2 minutes 39.0 seconds W., then bearing 230 degrees T to a point on the western shoreline with coordinates of latitude 40 degrees 10 minutes 53.5 seconds N., and longitude 74 degrees 3 minutes 3.4 seconds W., and terminating.



Date: 11/1/16

D. Kennedy
Daniel M. Kennedy

Assistant Commissioner, Water Resources Management