

Shellfish growing water classification charts are a graphic representation of the classification regulations and are provided for general information only. These charts are provided for the purpose of delineating shellfish growing water classifications, and are not intended to be used for navigational purposes. See N.J.A.C. 7:12-2 through 5 for the full text and area descriptions.

# SHELLFISH CLASSIFICATION CODES

## Approved Area

Waters where the harvest of shellfish is allowed.

## Conditionally Approved

( January 1st - April 30th )

Waters which are classified as Conditionally Approved, and are in the closed status from May 1 through December 31 and are in the open status from January 1 through April 30, pursuant to N.J.A.C. 7:12-4.1(b).

## Conditionally Approved

( November 1st - April 30th )

Waters which are classified as Conditionally Approved, and are in the closed status from May 1 through October 31 and are in the open status from November 1 through April 30, pursuant to N.J.A.C. 7:12-4.1(a).

## Restricted Area

Waters where the harvest of shellfish is not allowed except as authorized by an issued permit in accordance with N.J.A.C 7:12-9.

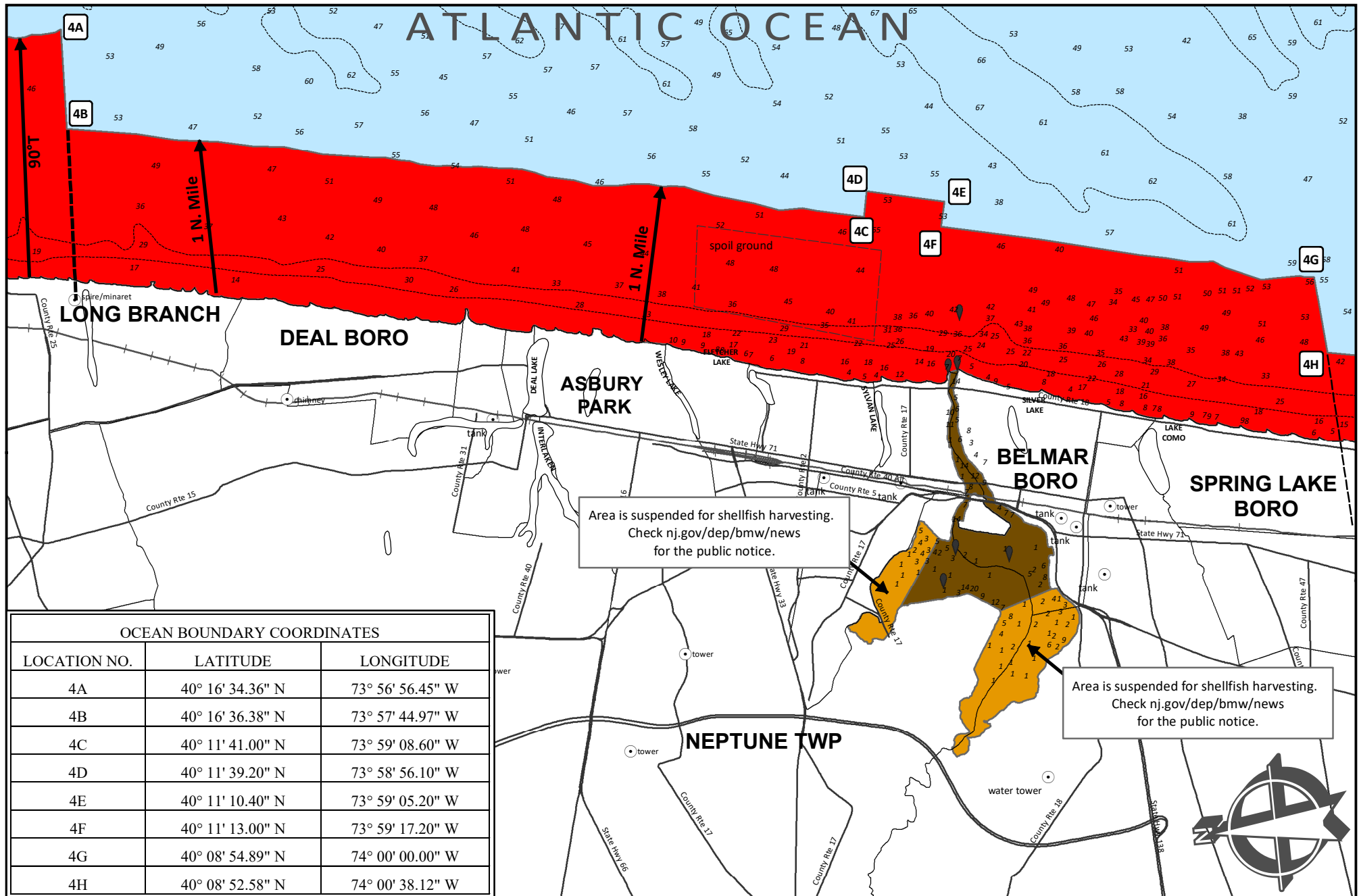
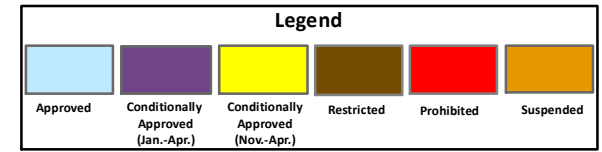
## Prohibited Area

Waters where the harvest of shellfish is not allowed.

## Suspended Area

Waters where the harvest of shellfish is suspended pending the establishment by rule making of the appropriate classification.

# NEW JERSEY SHELLFISH GROWING WATER CLASSIFICATION CHART 4



| OCEAN BOUNDARY COORDINATES |                  |                  |
|----------------------------|------------------|------------------|
| LOCATION NO.               | LATITUDE         | LONGITUDE        |
| 4A                         | 40° 16' 34.36" N | 73° 56' 56.45" W |
| 4B                         | 40° 16' 36.38" N | 73° 57' 44.97" W |
| 4C                         | 40° 11' 41.00" N | 73° 59' 08.60" W |
| 4D                         | 40° 11' 39.20" N | 73° 58' 56.10" W |
| 4E                         | 40° 11' 10.40" N | 73° 59' 05.20" W |
| 4F                         | 40° 11' 13.00" N | 73° 59' 17.20" W |
| 4G                         | 40° 08' 54.89" N | 74° 00' 00.00" W |
| 4H                         | 40° 08' 52.58" N | 74° 00' 38.12" W |