



**Investing in Resilient Habitats and Communities in New Jersey**

*Amanda Bassow, Northeastern Regional Director, NFWF*  
*New Jersey Coastal Resilience Summit, October 10, 2018*



# About Us

## Who We Are

- Chartered by Congress in 1984
- 30 member Board appointed by Secretary of the Interior,
  - Includes FWS Director and NOAA Administrator

## What We Do

- Sustain, restore and enhance wildlife
- Bring collaboration among federal agencies and private sector

## How We Do It

- Leverage public funding with private money – average 3:1



*Bald eagle*

## NFWF is

- An implementer – we fund projects

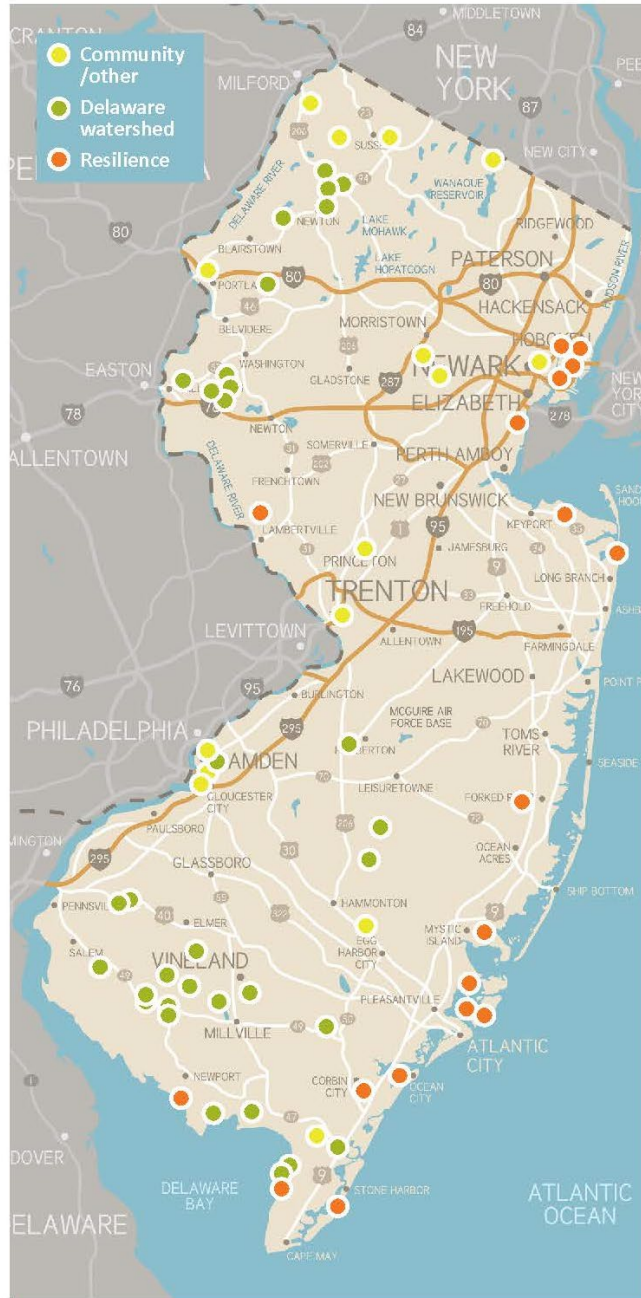
## NFWF is not

- An advocacy organization that engages in lobbying or litigation



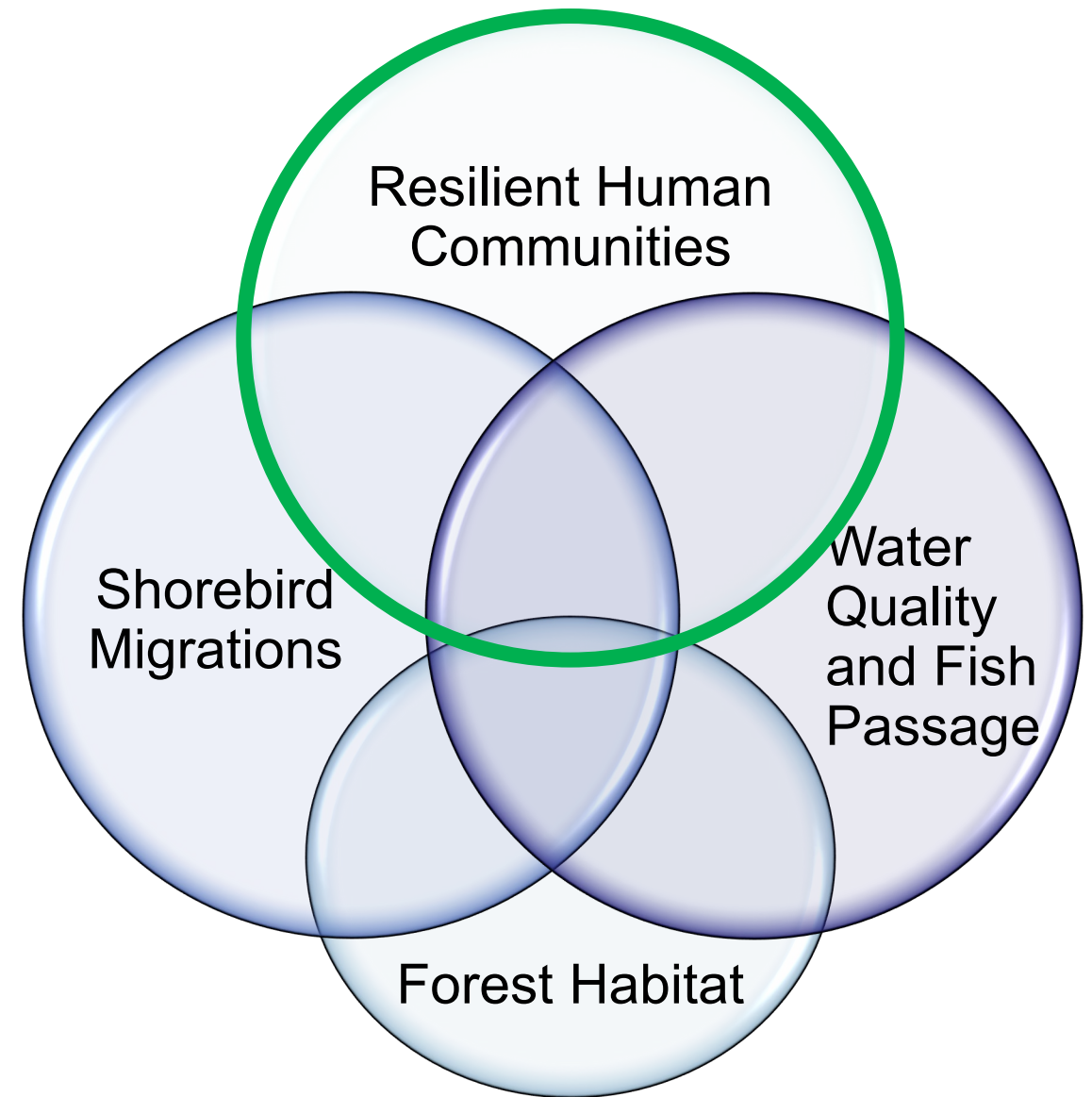
# Recent Investments in NJ: 2013-2018

70 grants totaling \$32 million  
In partnership with . . .

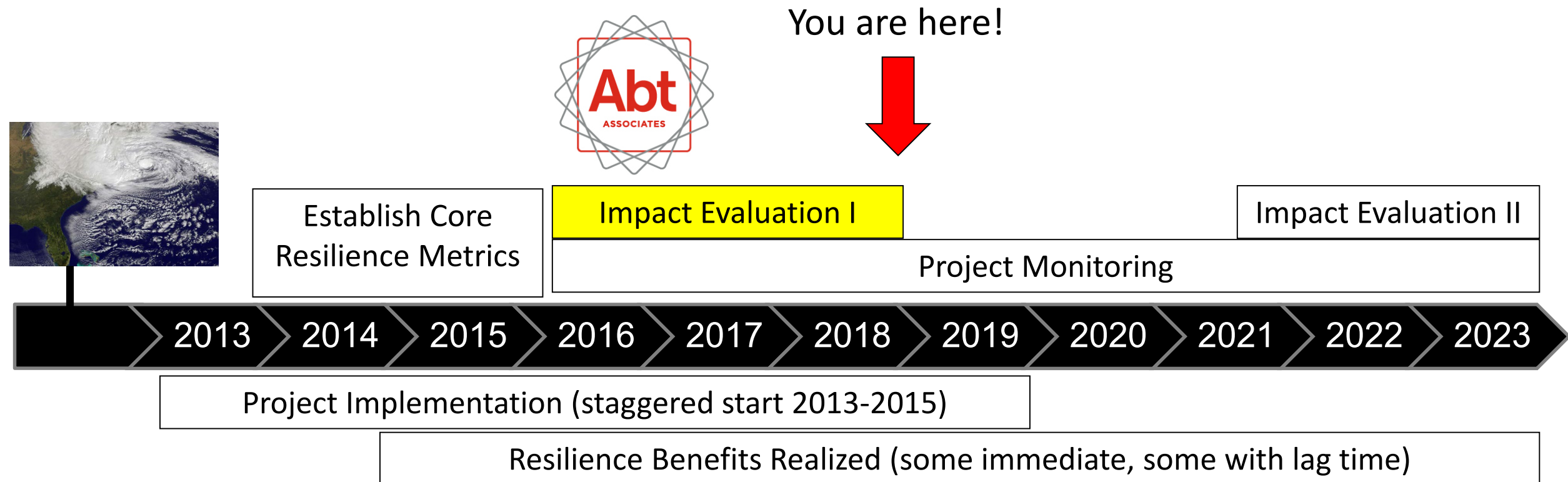


# NFWF's Conservation Priorities in NJ

- Protecting shorebird migrations on the Delaware Bayshore
- Restoring water quality and fish passage in the Delaware River watershed
- Managing forests for habitat diversity
- ***Building more resilient communities for wildlife and people***



# Hurricane Sandy Evaluation and Monitoring: A Unique Opportunity



NFWF



# Sandy Objectives Achieved To Date



## Beach/Dune Restoration



19 miles of coastline restored



1,700,000 cubic yards of sand used

## Data, Mapping, and Modeling



500+ products completed and tracked in a living inventory

## Community Resilience Planning



28 plans, assessments, or designs completed



60%+ projects moving ahead with implementation

## Marsh Restoration



195,000+ acres of marsh restored with thin layer dredge or hydrologic improvements

# Sandy Objectives Achieved To Date



## Green Infrastructure



160 structures installed



172+ trillion gallons of stormwater storage over time

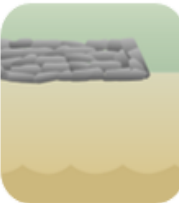


800+ acres with improved stormwater management

## Living Shorelines



17 projects across 28 sites



56,000+ feet of living shorelines created

## Aquatic Connectivity



23 dams removed

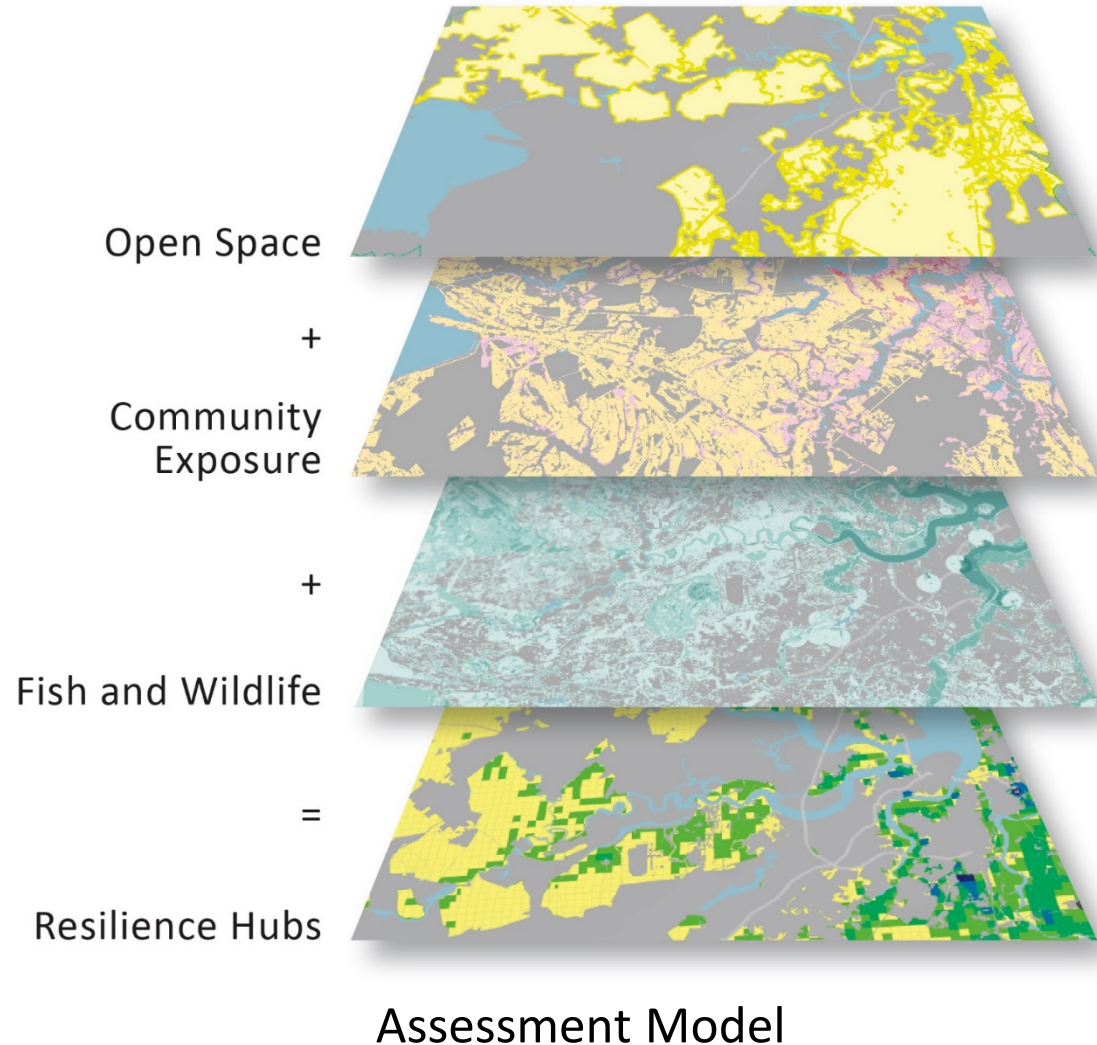


10 culverts right-sized



250+ river miles opened

# Coastal Resilience Assessments



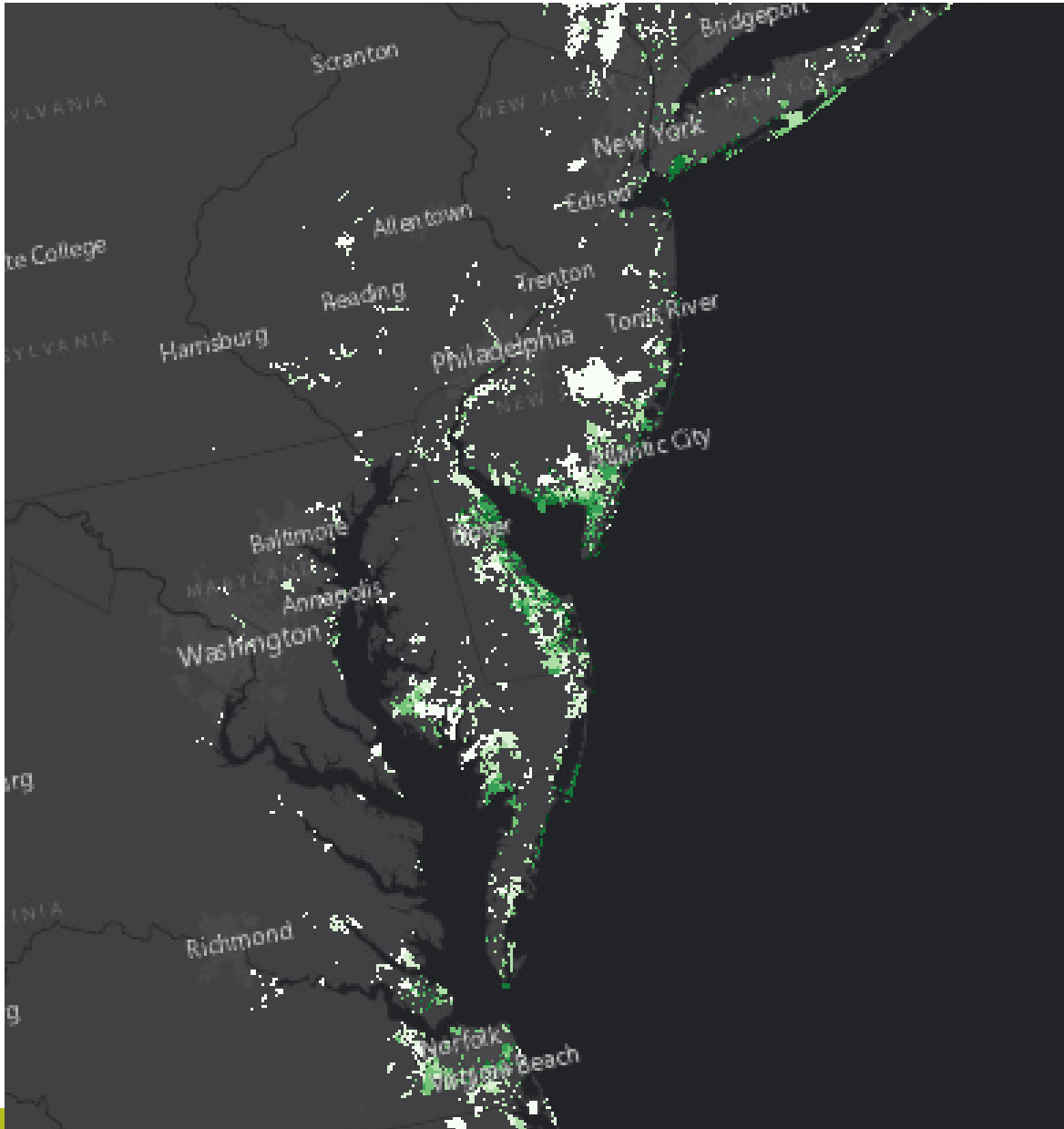
- Identify areas on the landscape – “Resilience Hubs” – where implementation of conservation actions will have maximum benefit for ***community resilience and fish and wildlife habitat***
- Account for coastal and inland storm events
- Regional assessments create a contiguous and standardized data set for US coastlines
- Targeted watershed assessments customize the regional model with local data and identify projects that build community and ecological resilience



NFWF



# Coastal Resilience Assessments



- Identify areas on the landscape – “Resilience Hubs” – where implementation of conservation actions will have maximum benefit for ***community resilience and fish and wildlife habitat***
- Account for coastal and inland storm events
- Regional assessments create a contiguous and standardized data set for US coastlines
- Targeted watershed assessments customize the regional model with local data and identify projects that build community and ecological resilience



NFWF



# Ongoing Grant Opportunities

[www.nfwf.org](http://www.nfwf.org)

Delaware Watershed Conservation Fund  
 National Coastal Resilience Fund  
 Resilient Communities Program

