



THE RESERVE'S ROLE IN NJ COASTAL RESILIENCE

Lisa Auermuller
Assistant Manager



National Estuarine Research Reserves

LIST OF RESERVES

Great Lakes

1. Lake Superior, Wisconsin
2. Old Woman Creek, Ohio

Northeast

3. Wells, Maine
4. Great Bay, New Hampshire
5. Waquoit Bay, Massachusetts
6. Narragansett Bay, Rhode Island
7. Connecticut (Proposed)

Mid-Atlantic

8. Hudson River, New York
9. Jacques Cousteau, New Jersey
10. Delaware
11. Chesapeake Bay, Maryland
12. Chesapeake Bay, Virginia

Southeast

13. North Carolina
14. North Inlet-Winyah Bay, South Carolina
15. ACE Basin, South Carolina
16. Sapelo Island, Georgia
17. Guana Tolomato Matanzas, Florida

Gulf of Mexico

18. Rookery Bay, Florida
19. Apalachicola, Florida
20. Weeks Bay, Alabama
21. Grand Bay, Mississippi
22. Mission-Aransas, Texas

West

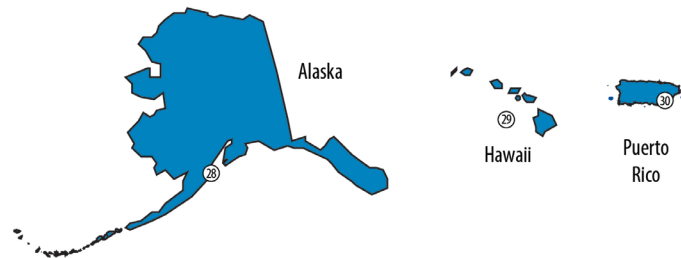
23. Tijuana River, California
24. Elkhorn Slough, California
25. San Francisco Bay, California
26. South Slough, Oregon
27. Padilla Bay, Washington
28. Kachemak Bay, Alaska

Pacific

29. He'eia, Hawai'i

Caribbean

30. Jobos Bay, Puerto Rico



NATIONALLY
SIGNIFICANT.
LOCALLY
RELEVANT.

WE ARE A
SENTINEL
SITE.



DATA AND MONITORING TO APPLIED DECISION MAKING

Economic Valuation of Shoreline Protection within the Jacques Cousteau National Estuarine Research Reserve



NOAA National Centers for Coastal Ocean Science
Marine Spatial Ecology

Jarrold Loerzel, Matt Gorstein, Ali Mohammad Rezaie
Sarah Ball Gonyo, Chloe S. Fleming, and Angela Orthmeyer



September 2017

NOAA TECHNICAL MEMORANDUM NOS NCCOS 234

NOAA NCCOS MSE

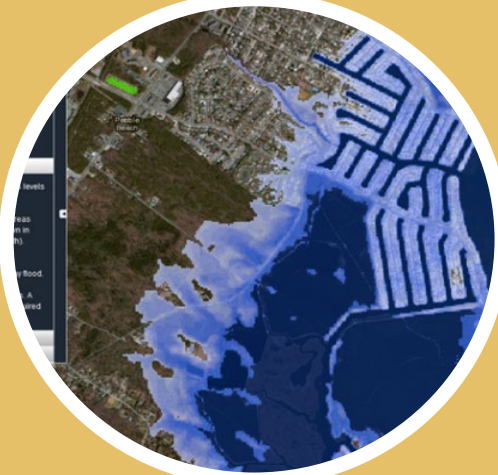






Getting to Resilience

www.PrepareYourCommunityNJ.org



Assess

Evaluate Your Municipal
Risks and Vulnerabilities



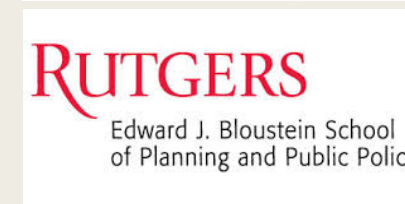
Plan

Utilize Getting to Resilience
to Plan for the Future



Implement

Take Actions to Increase
Municipal Preparedness

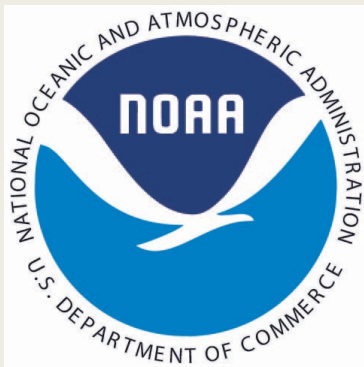


Partners.



THE NEXT GENERATION

NATIONAL TRANSFER



Summary

After Post-Tropical Cyclone Sandy, municipalities in increasing numbers started looking for ways to make their communities more resilient. The Jacques Cousteau National Estuarine Research Reserve has helped over 30 municipalities in coastal New Jersey thus far by developing maps and information materials, facilitating meetings with local government staff members, and writing up the results in the form of community recommendations. The reserve staff members involved with this project say one of the most essential skills in working with communities is to be seen as a trusted source and be willing to listen and help facilitate the discussions.



"We are there to help them have the conversation and think about the future."

- Lisa Auermuller, Jacques Cousteau National Estuarine Research Reserve

Lessons Learned

- **Building resilience is not a quick process**, and nothing about working with municipalities ever happens quickly. It is about relationships and trust building.
- **Resilience to coastal hazards is just one of the facets of resilience building.** There are other aspects of resilience that will have to be considered as well, such as population growth and development pressures.

PRINT

QUICK FA

TOPIC

Learn the approach taken by New Jersey towns to do hazard mitigation planning

CONTACT

Lisa Auermuller
auermull@marine.rutge

SCALE

Municipal

LOCATION

New Jersey coastal mun

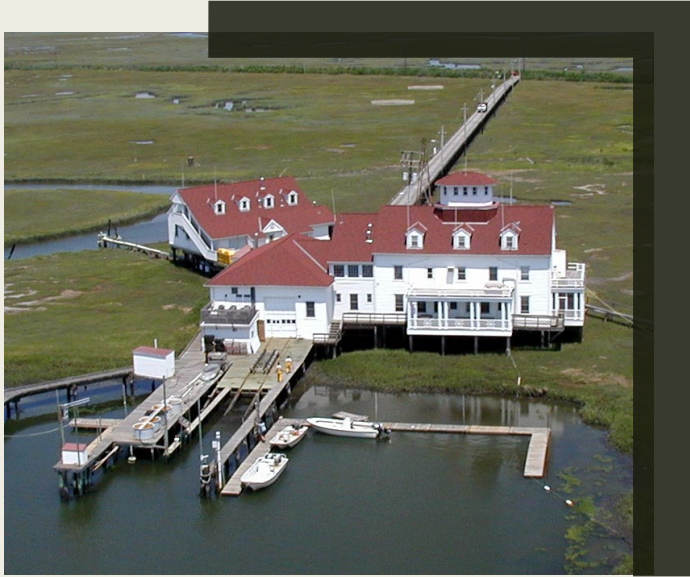
INTERNATIONAL TRANSFER





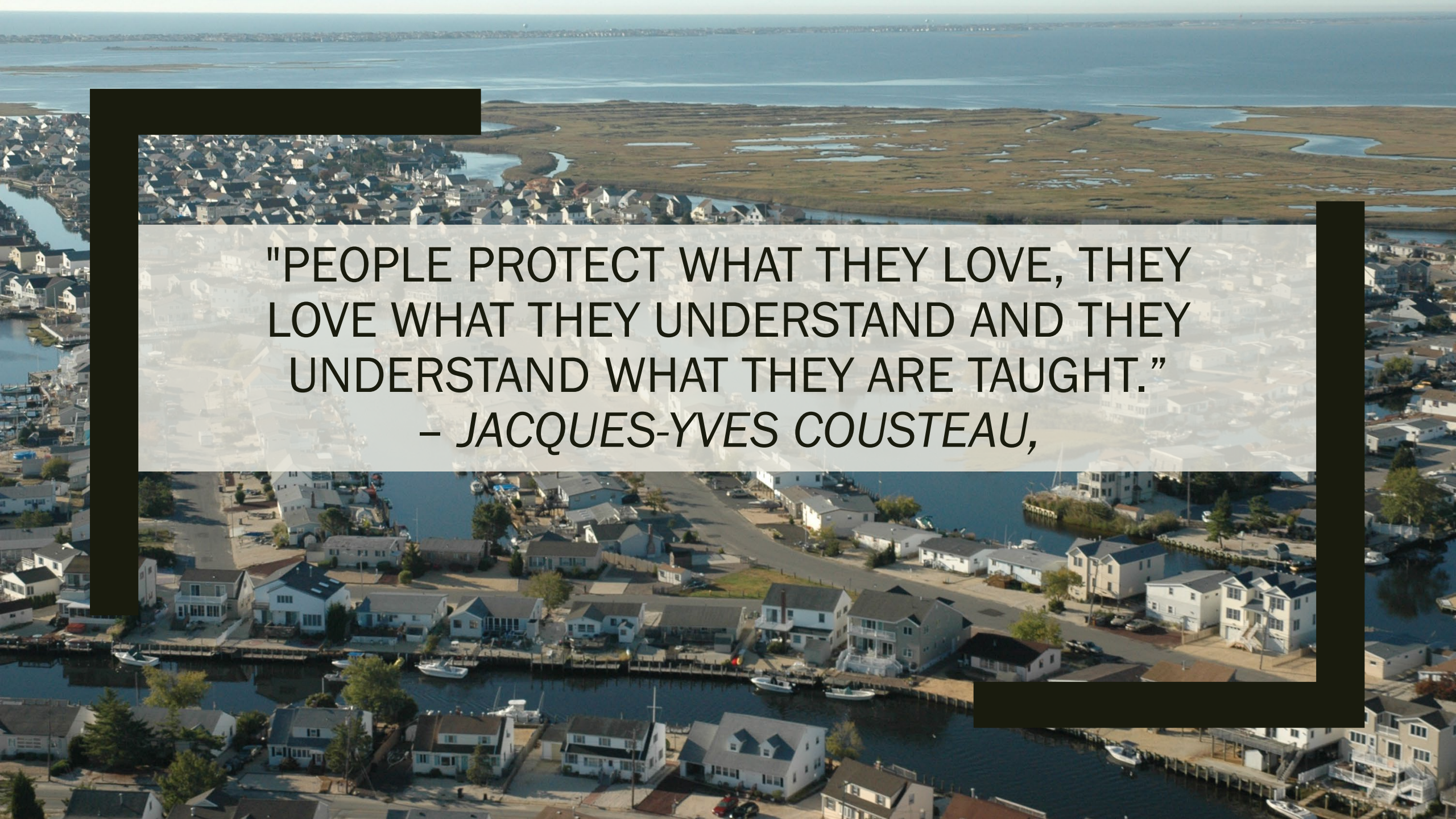
BRIDGING SCIENCE TO MANAGEMENT





Science to Inform Policy
Stakeholder Engagement
Community Stewardship



An aerial photograph of a coastal town. In the foreground, there are numerous houses with light-colored roofs and walls, some with porches, situated along a waterfront. Several boats are docked at small piers. The middle ground shows a large area of marshland with green and brown patches, interspersed with small pools of water. In the background, the ocean stretches to the horizon under a clear sky. The text is overlaid on a semi-transparent white rectangular area in the center of the image.

"PEOPLE PROTECT WHAT THEY LOVE, THEY
LOVE WHAT THEY UNDERSTAND AND THEY
UNDERSTAND WHAT THEY ARE TAUGHT."
– JACQUES-YVES COUSTEAU,