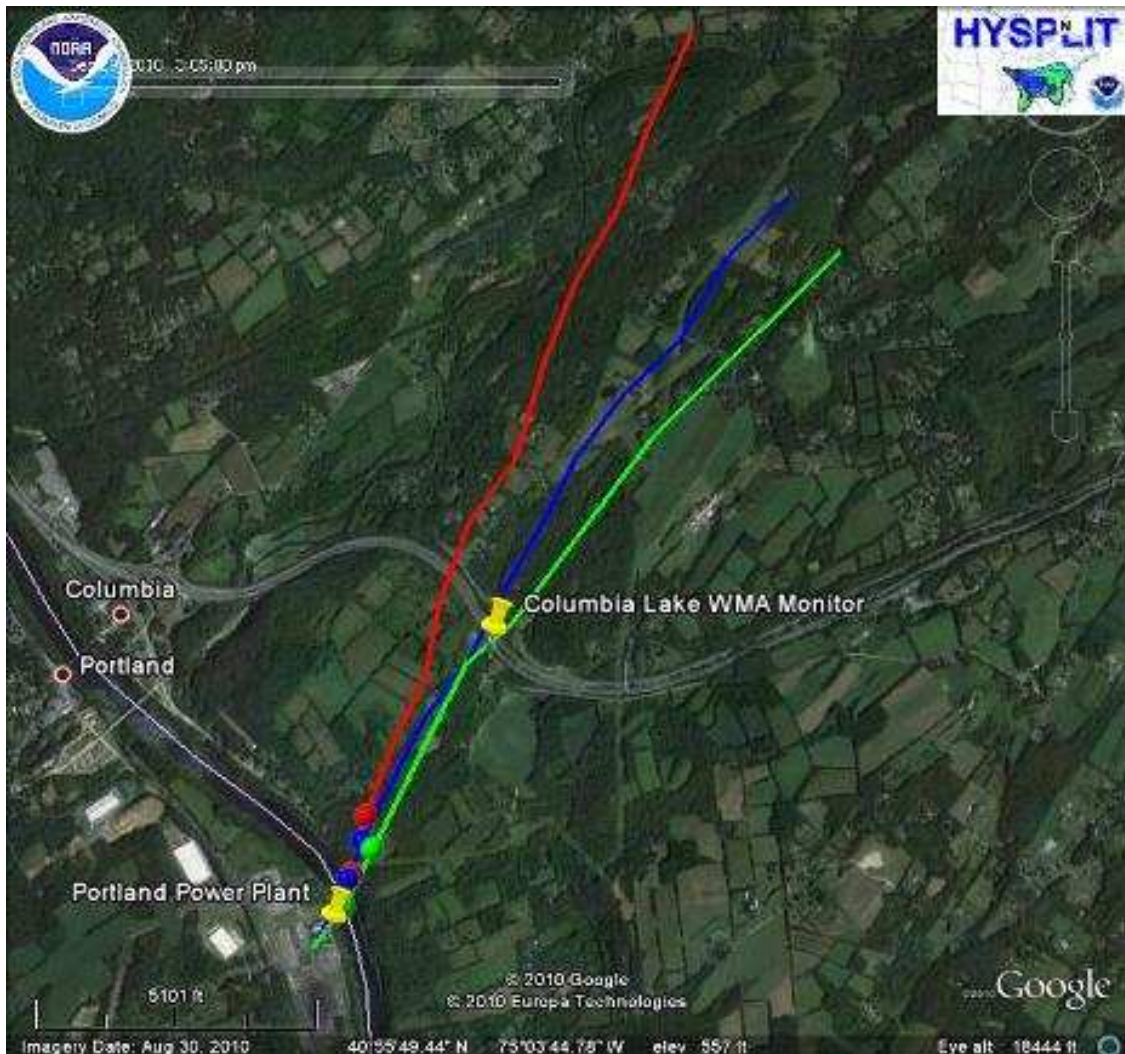


**Handout #6**  
**September 29, 2010 Forward 1-Hour Trajectory from the Portland Power Plant**  
**(starting time of 11 am EDT)**



Red Line = 10 meter above ground trajectory (approximate monitor height)  
Blue Line = 100 meter above ground trajectory  
Green Line = 221 meter above ground trajectory (approximate initial plume height)

**Columbia Lake WMA Monitor = 92 ppb**  
**SO<sub>2</sub> 1-hour National Ambient Air Quality Standard = 75 ppb**