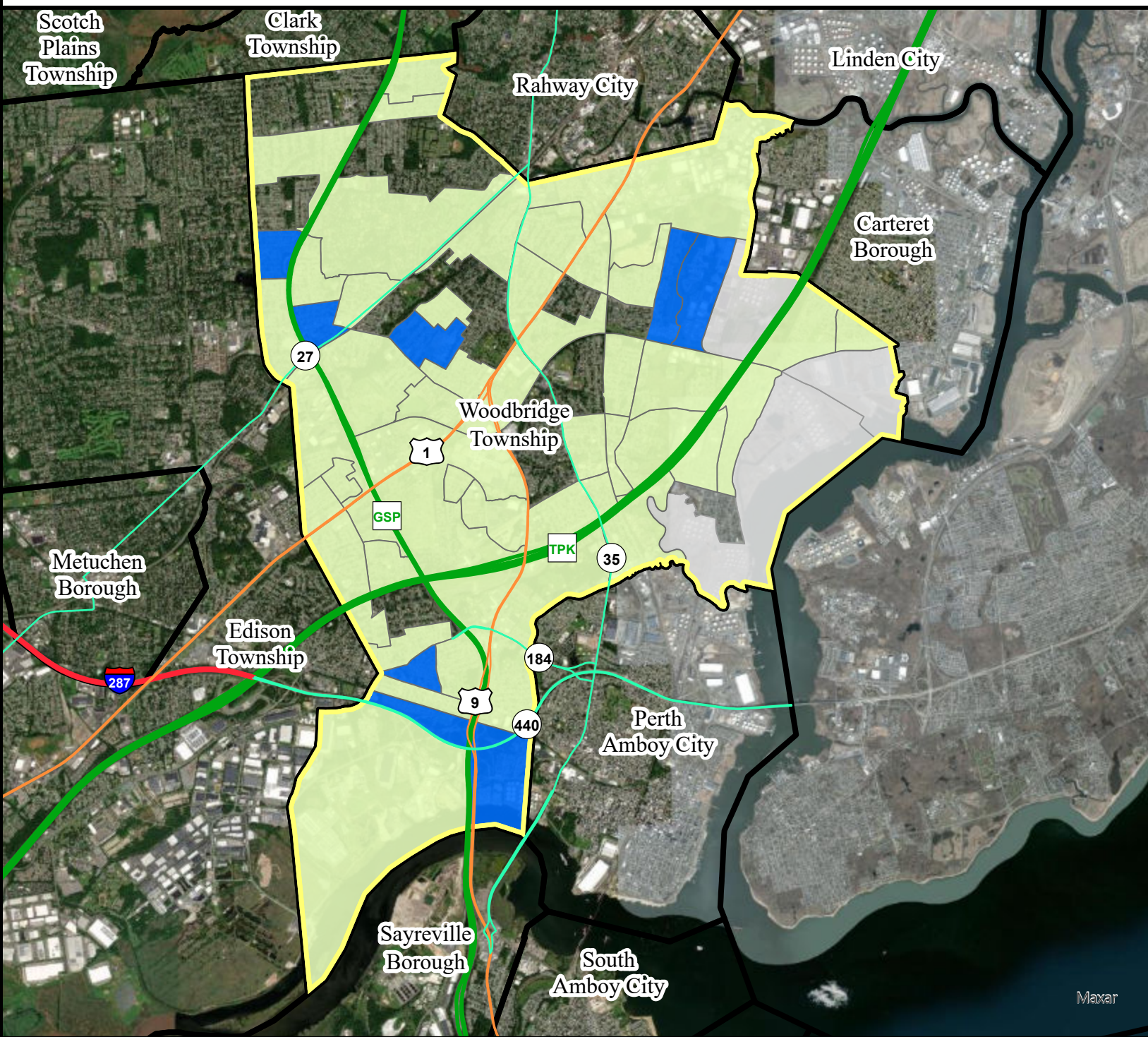


# Overburdened Communities under the New Jersey Environmental Justice Law in Woodbridge Township, Middlesex County



Maxar

An overburdened community is any census block group, as determined in accordance with the most recent United States Census, in which: (1) at least 35 percent of the households qualify as low-income households; (2) at least 40 percent of the residents identify as minority or as members of a State recognized tribal community; or (3) at least 40 percent of the households have limited English proficiency. Census block groups with zero population and located immediately adjacent to an OBC are labeled as "adjacent." Existing or proposed facilities located in adjacent block groups may be required to conduct further analysis in accordance with the Environmental Justice Rules (<https://www.nj.gov/departments/proposals/proposal-20220606a.pdf>).

Disclaimer: The boundary information in the TIGER/Line Shapefiles used for the maps are for statistical data collection and tabulation purposes only; their depiction and designation does not constitute a determination of jurisdictional authority or rights of ownership or entitlement and they are not legal land descriptions.

**Municipalities**  
**Woodbridge Township**  
**Overburdened Community Criteria**

Adjacent  
 Limited English  
 Low Income  
 Low Income and Limited English  
 Low Income and Minority  
 Low Income, Minority, and Limited English  
 Minority  
 Minority and Limited English

Toll Road  
 Interstate  
 US Highway  
 State Highway



Date: 6/1/2022

N



0 0.5 1 Miles