

ATTENTION ANGLERS

2017 NJ Recreational Minimum Size, Possession Limits & Seasons



Hard Clam 1.5 inches

Recreational Limit – 150 clams

No harvest on Sunday

Shellfish license required



Summer Flounder (Fluke)

Del. Bay and Tributaries 3 Fish at 17 Inches

All Other Marine Waters 3 fish at 18 inches

See Digest for IBSP and DE Bay Regulations

Open Season: May 25 – Sept. 5



Weakfish

1 fish at 13 inches

Open Season: Jan. 1 – Dec. 31



Black Sea Bass

10 fish at 12.5 inches May 26 – June 18

2 fish at 12.5 inches July 1 – August 31

15 fish at 12.5 inches Oct. 22—Dec. 31



Bluefish

15 fish; No Minimum Size

Open Season: Jan. 1 – Dec. 31

- Fish are measured from the tip of the snout to tip of the tail (except Black Sea Bass and Sharks).
- Cleaning or filleting of fish with a minimum size limit while at sea is prohibited. See the Marine edition of the Fish & Wildlife Digest or the Fish & Wildlife website for exceptions.



Striped Bass or Hybrid Striped Bass

1 fish at 28 inches to less than 43 inches

1 fish at 43 inches or greater

See Digest for Striped Bass Bonus Program

Del. River and tributaries Calhoun St. Bridge,
Trenton to Salem River and tributaries

Open Mar. 1 – Mar. 31 & June 1 – Dec. 31

Atlantic Ocean

0-3 miles from shore, no closed season

Greater than 3 miles from shore, closed

All other marine waters, open Mar. 1 – Dec. 31

PROHIBITED SPECIES

See the Marine edition of the NJ Fish & Wildlife Digest or Fish & Wildlife's website for a complete list.

Other Species	Possession Limit	Total Length
American Eel	25	9"
Black Drum	3	16"
Cod	NO LIMIT	21"
Haddock	NO LIMIT	21"
Pollock	NO LIMIT	19"
King Mackerel	3	23"
Red Drum	1	18-27"
River Herring	CLOSED	N/A
Scup (Porgy)	50	9"

Shad	6	NO LIMIT
American Lobster	6	3 3/8" to 5 1/4" Carapace Length
Jonah Crab	50	4 3/4" Carapace Width



Tautog 15 inches

4 fish Jan. 1 – Feb. 28

4 fish Apr. 1 – Apr. 30

1 fish July 17 – Nov. 15

6 fish Nov. 16 – Dec. 31



Winter Flounder

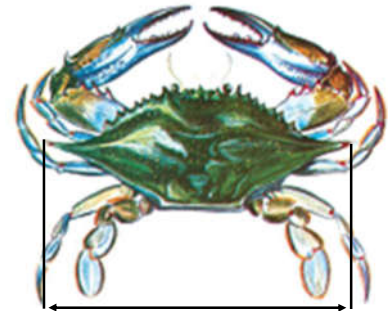
2 fish at 12 inches

Open Season: Mar. 1 – Dec. 31



Shark

1 fish per vessel at 54 inches



Blue Crab

(measured point to point)

Peeler or Shedder — 3 inches

Soft — 3½ inches

Hard — 4½ inches

Recreation Limit — One Bushel

Crab pot/Trot line Seasons:

Delaware Bay & tributaries

Apr. 6 — Dec. 4

All other waters

Mar. 15 — Nov. 30

Register before fishing! It's free, easy, and required.

SaltwaterRegistry.nj.gov

New Jersey Department of Environmental Protection
Division of Fish and Wildlife
www.njfishandwildlife.com



8/11/2017

