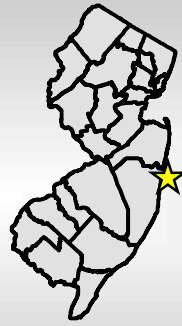


Axel Carlson Reef

(Map 1 of 3)

Distance offshore --- 2.1 nm
 Reef area ----- 5.2 sq mi
 Depth range ----- 66-82 ft

**NOT FOR
 NAVIGATIONAL
 PURPOSES.**

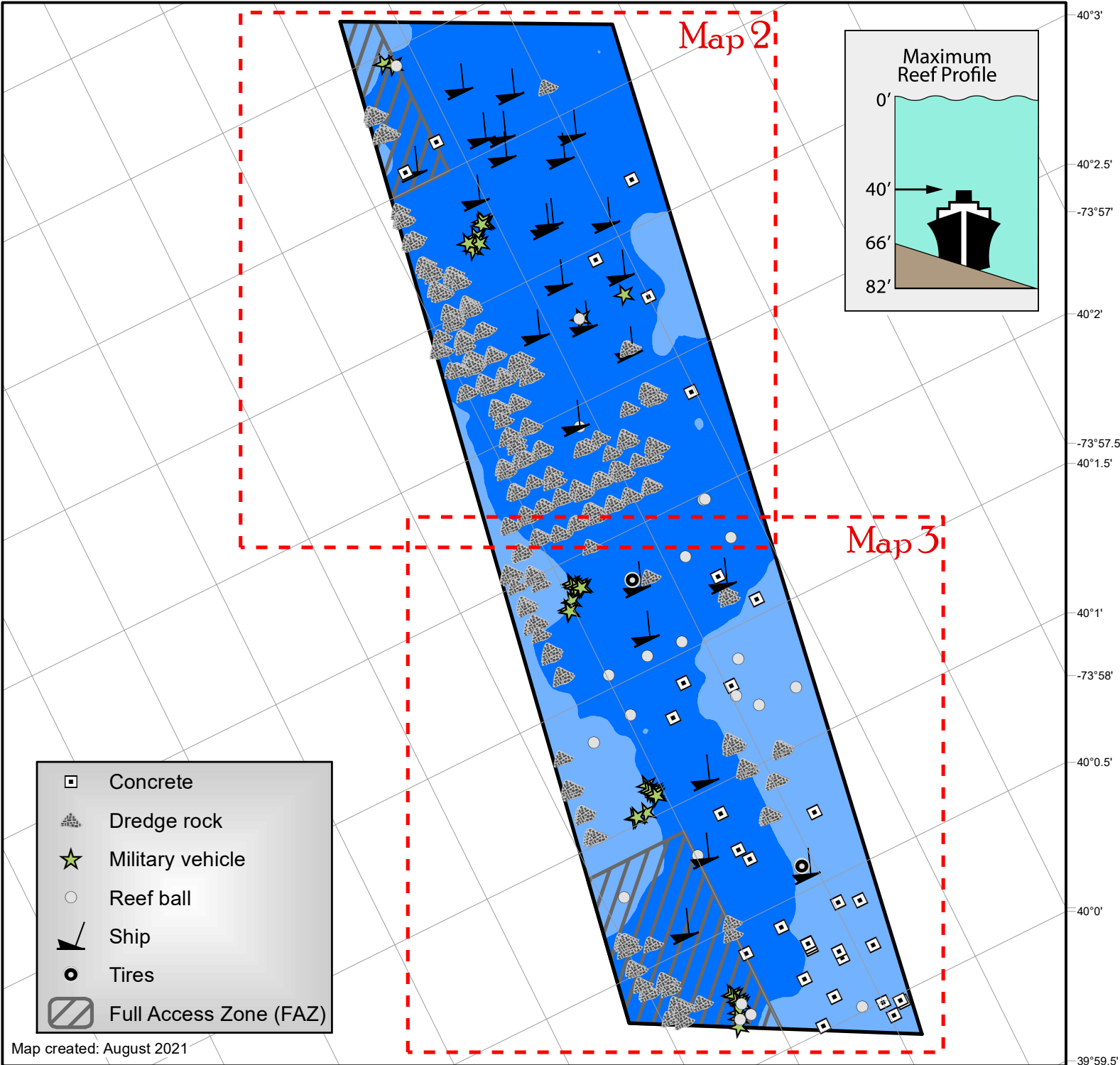


Depth

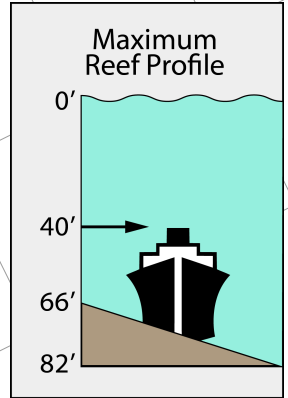
- 60 - 70 ft
- 70 - 80 ft



-74°1' -74°0.5' -74°0' -73°59.5' -73°59' -73°58.5' -73°58' 40°3.5' -73°57.5' -73°57'



Map 2



Map 3

- Concrete
- Dredge rock
- Military vehicle
- Reef ball
- Ship
- Tires
- Full Access Zone (FAZ)

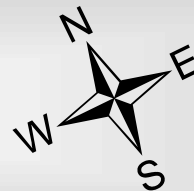
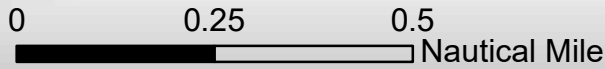
Map created: August 2021

-74°3' 40°1' -74°2.5' -74°2' -74°1.5' -74°1' -74°0.5' 40°0' -74°0' -73°59.5' -73°59'

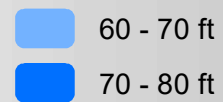
40°3'
40°2.5'
-73°57'
40°2'
-73°57.5'
40°1.5'
40°1'
-73°58'
40°0.5'
40°0'
39°59.5'

Axel Carlson Reef (Map 2 of 3)

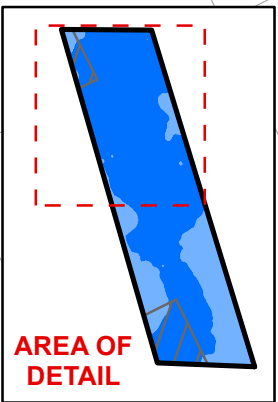
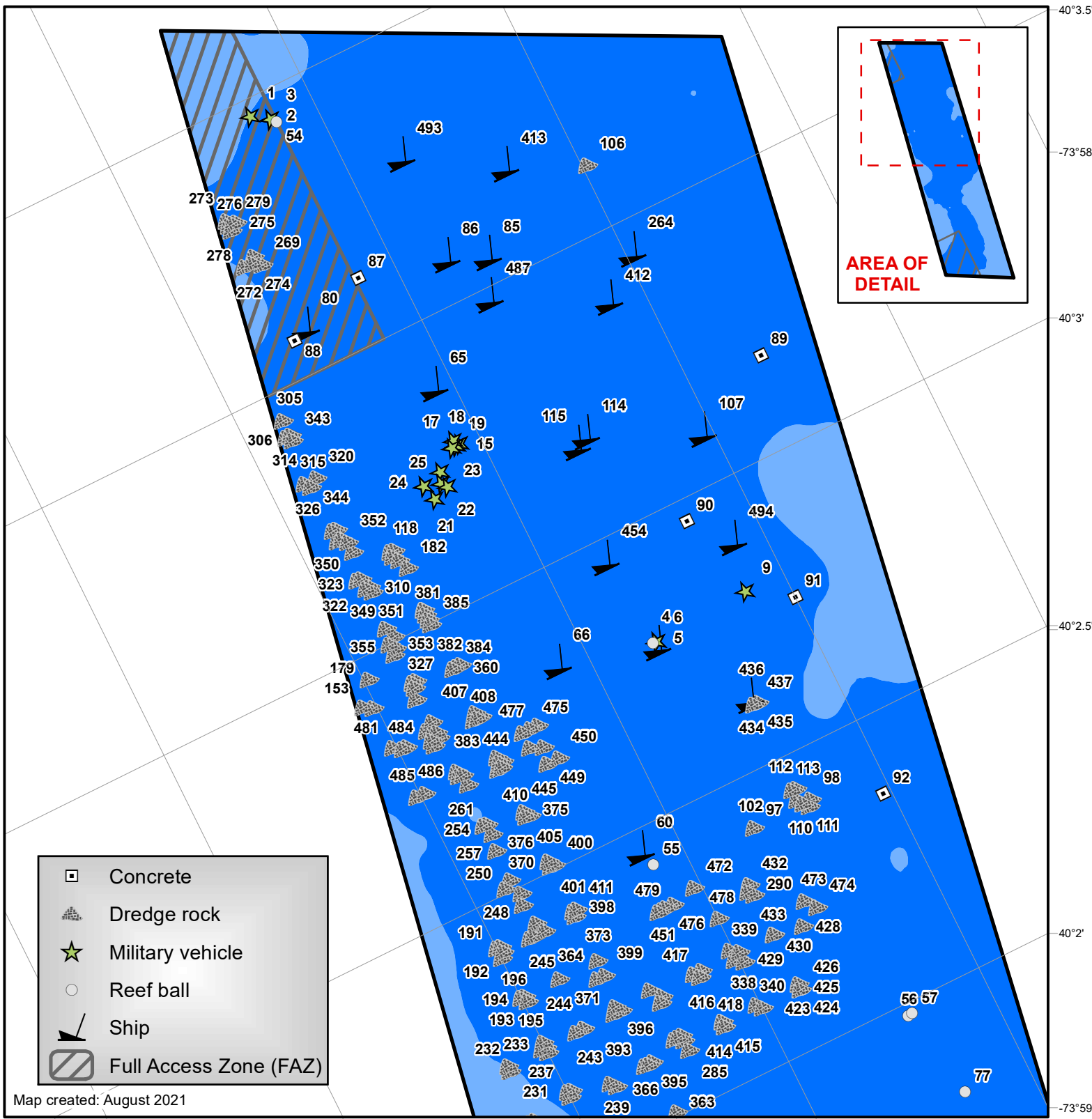
**NOT FOR
NAVIGATIONAL
PURPOSES.**



Depth



-74°0' -73°59.5' 40°4' -73°59' -73°58.5' -73°58'



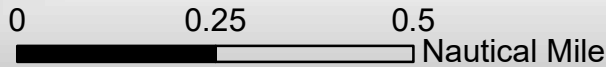
- Concrete
- Dredge rock
- Military vehicle
- Reef ball
- Ship
- Full Access Zone (FAZ)

Map created: August 2021

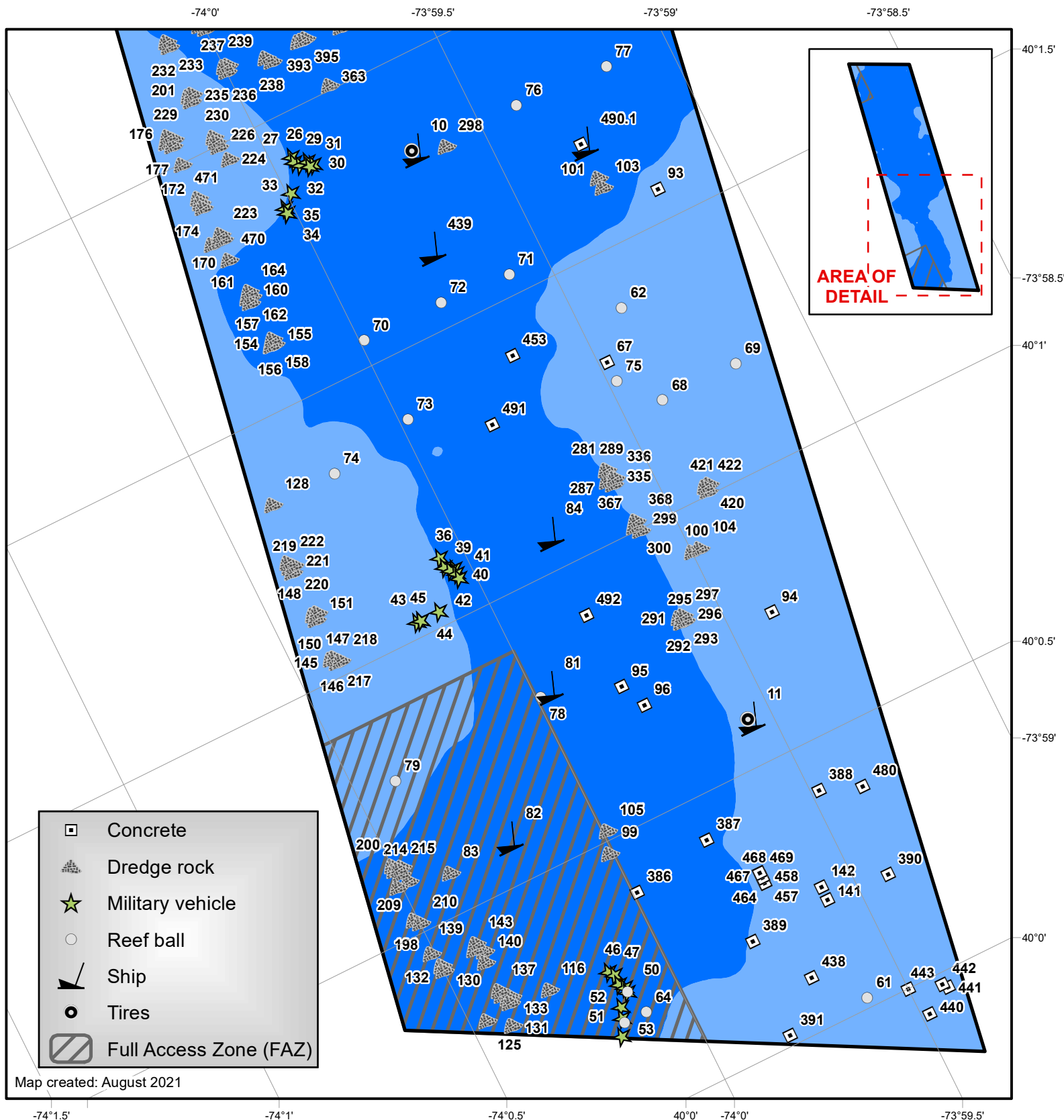
40°2.5' -74°1' -74°0.5' -74°0' 40°2' -73°59.5' -73°59'

Axel Carlson Reef (Map 3 of 3)

**NOT FOR
NAVIGATIONAL
PURPOSES.**



Depth



-74°1.5' -74°1' -74°0.5' 40°0' -74°0' -73°59.5'

AXEL CARLSON REEF

ID #	Name	Description	Sponsor	Date Deployed	Latitude	Longitude
1	Military Vehicle	M-60 Patton Main Battle Tank (MBT)	U.S. Army	10/13/1994	40 03.97002N	073 59.65002W
2	Donald F. Ballinger Memorial Reef	M-60 Patton Main Battle Tank (MBT)	Susan, Megan and family & friends	10/13/1994	40 03.94998N	073 59.61000W
3	Donald F. Ballinger Memorial Reef	M-60 Patton Main Battle Tank (MBT)	Susan, Megan and family & friends	10/13/1994	40 03.94998N	073 59.61000W
4	Colleen GPPCBA/Budweiser Reef	92' Tugboat - "Colleen"	Assoc. (GPPCBA); Budweiser; Crown Distributers	8/3/1996	40 02.79000N	073 59.35002W
5	Military Vehicle	M-113 Armored Personnel Carrier (APC)	Assoc.; Budweiser; NJ Army National Guard	8/16/1996	40 02.79000N	073 59.34000W
6	Military Vehicle	M-113 Armored Personnel Carrier (APC)	Assoc.; Budweiser; NJ Army National Guard	8/16/1996	40 02.79000N	073 59.34000W
9	Military Vehicle	M-113 Armored Personnel Carrier (APC)	Assoc.; Budweiser; NJ Army National Guard	8/16/1996	40 02.80002N	073 59.10000W
10	Capt. Ed Schmidiger	165' Tanker Barge - "Capt. Ed Schmidiger"	Schmidiger and Donahoe	10/8/1997	40 01.83000N	073 59.68002W
11	Ocean Wreck Divers III	III"	Ocean Wreck Divers	10/8/1997	40 00.58998N	073 59.56002W
12	Tire Units	Tire units (x110 off-road)	Carbon Service Corp.	10/8/1997	40 01.83000N	073 59.68002W
13	Tire Units	Tire units (x109 off-road)	Carbon Service Corp.	10/8/1997	40 00.58998N	073 59.56002W
14	Military Vehicle	M-113 Armored Personnel Carrier (APC)	NJ Army National Guard	8/21/1998	40 03.27000N	073 59.56002W
15	Military Vehicle	M-113 Armored Personnel Carrier (APC)	NJ Army National Guard	8/21/1998	40 03.27000N	073 59.55000W
16	Joseph M. Doherty Reef	M-60 Patton Main Battle Tank (MBT)	NJ Army National Guard; Family & Friends	8/21/1998	40 03.27000N	073 59.56002W
17	Military Vehicle	M-60 Patton Main Battle Tank (MBT)	NJ Army National Guard	8/21/1998	40 03.27000N	073 59.56002W
18	Military Vehicle	M-48 Patton Medium Tank	NJ Army National Guard	8/21/1998	40 03.28002N	073 59.56002W
19	Military Vehicle	M-60 Patton Main Battle Tank (MBT)	NJ Army National Guard	8/21/1998	40 03.27000N	073 59.56998W
20	Military Vehicle	M-60 Patton Main Battle Tank (MBT)	NJ Army National Guard	8/21/1998	40 03.24000N	073 59.62002W
21	Manasquan Fishing Club Reef	M-60 Patton Main Battle Tank (MBT)	NJ Army National Guard; Manasquan Fishing Club	8/21/1998	40 03.19998N	073 59.65998W
22	Military Vehicle	M-113 Armored Personnel Carrier (APC)	NJ Army National Guard	8/21/1998	40 03.22002N	073 59.62998W
23	Military Vehicle	M-113 Armored Personnel Carrier (APC)	NJ Army National Guard	8/21/1998	40 03.21000N	073 59.62002W
24	The Explorer Club Reef	M-60 Patton Main Battle Tank (MBT)	NJ Army National Guard; The Explorer's Club	8/21/1998	40 03.22998N	073 59.67000W
25	Military Vehicle	M-551 Sheridan Light Tank	NJ Army National Guard	8/21/1998	40 03.22998N	073 59.67000W
26	Military Vehicle	M-578 Light Recovery Vehicle	NJ Army National Guard	8/21/1998	40 01.92000N	073 59.95002W
27	Military Vehicle	M-113 Armored Personnel Carrier (APC)	NJ Army National Guard	8/21/1998	40 01.90998N	073 59.95002W
28	Military Vehicle	M-113 Armored Personnel Carrier (APC)	NJ Army National Guard	8/21/1998	40 01.90002N	073 59.94000W
29	Military Vehicle	M-113 Armored Personnel Carrier (APC)	NJ Army National Guard	8/21/1998	40 01.90002N	073 59.92002W
30	Military Vehicle	M-113 Armored Personnel Carrier (APC)	NJ Army National Guard	8/21/1998	40 01.89000N	073 59.91000W
31	Military Vehicle	M-113 Armored Personnel Carrier (APC)	NJ Army National Guard	8/21/1998	40 01.89000N	073 59.92002W
32	Military Vehicle	M-113 Armored Personnel Carrier (APC)	NJ Army National Guard	8/21/1998	40 01.86000N	073 59.98998W
33	Military Vehicle	M-113 Armored Personnel Carrier (APC)	NJ Army National Guard	8/21/1998	40 01.84002N	074 00.01998W
34	Military Vehicle	M-113 Armored Personnel Carrier (APC)	NJ Army National Guard	8/21/1998	40 01.83000N	074 00.01998W

AXEL CARLSON REEF

ID #	Name	Description	Sponsor	Date Deployed	Latitude	Longitude
35	Susan Balluys Reef	M-113 Armored Personnel Carrier (APC)	NJ Army National Guard; Susan Balluys	8/21/1998	40 01.83000N	074 00.01998W
36	Susan Balluys Reef	M-113 Armored Personnel Carrier (APC)	NJ Army National Guard; Susan Balluys	8/21/1998	40 01.12002N	074 00.06000W
37	Military Vehicle	M-113 Armored Personnel Carrier (APC)	NJ Army National Guard	8/21/1998	40 01.09998N	074 00.06000W
38	Military Vehicle	M-113 Armored Personnel Carrier (APC)	NJ Army National Guard	8/21/1998	40 01.09002N	074 00.04002W
39	Wasabi Reef	M-113 Armored Personnel Carrier (APC)	NJ Army National Guard; Capts. Arthur & Kelly Stokes	8/21/1998	40 01.09002N	074 00.04998W
40	Wasabi Reef	M-113 Armored Personnel Carrier (APC)	NJ Army National Guard; Capts. Arthur & Kelly Stokes	8/21/1998	40 01.08000N	074 00.04002W
41	Military Vehicle	M-113 Armored Personnel Carrier (APC)	NJ Army National Guard	8/21/1998	40 01.06998N	074 00.04002W
42	Military Vehicle	M-113 Armored Personnel Carrier (APC)	NJ Army National Guard	8/21/1998	40 01.03002N	074 00.12000W
43	Military Vehicle	M-113 Armored Personnel Carrier (APC)	NJ Army National Guard	8/21/1998	40 01.03002N	074 00.18000W
44	Military Vehicle	M-113 Armored Personnel Carrier (APC)	NJ Army National Guard	8/21/1998	40 01.03002N	074 00.16998W
45	Military Vehicle	M-113 Armored Personnel Carrier (APC)	NJ Army National Guard	8/21/1998	40 01.03002N	074 00.16998W
46	Military Vehicle	M-113 Armored Personnel Carrier (APC)	NJ Army National Guard	8/21/1998	40 00.28002N	074 00.13998W
47	Military Vehicle	M-113 Armored Personnel Carrier (APC)	NJ Army National Guard	8/21/1998	40 00.27000N	074 00.13002W
48	Military Vehicle	M-113 Armored Personnel Carrier (APC)	NJ Army National Guard	8/21/1998	40 00.25002N	074 00.13002W
49	Military Vehicle	M-113 Armored Personnel Carrier (APC)	NJ Army National Guard	8/22/1998	40 00.24000N	074 00.12000W
50	Military Vehicle	M-113 Armored Personnel Carrier (APC)	NJ Army National Guard	8/23/1998	40 00.22998N	074 00.12000W
51	Military Vehicle	M-113 Armored Personnel Carrier (APC)	NJ Army National Guard	8/24/1998	40 00.21000N	074 00.15000W
52	Military Vehicle	M-113 Armored Personnel Carrier (APC)	NJ Army National Guard	8/25/1998	40 00.19002N	074 00.16002W
53	Military Vehicle	M-113 Armored Personnel Carrier (APC)	NJ Army National Guard	8/26/1998	40 00.16002N	074 00.18000W
54	TNT Reef	30 Reef Balls (clump)	Thomas & Theresa DePaola	8/11/2000	40 03.94002N	073 59.59998W
55	Bayhead Shores Fishing Club Memorial Reef	20 Reef Balls (spread)	Bayhead Shore Fishing Club	8/11/2000	40 02.43000N	073 59.58000W
56	Sally Sheeran Reef	24 Reef Balls (clump) & (20 Reef Balls spread)	David D. Bender	8/16/2000	40 01.98000N	073 59.20002W
57	Reef Balls	26 Reef Balls (clump)	N/A	8/16/2000	40 01.98000N	073 59.19000W
58	Sea Gypsies Reef	20 Reef Balls (clump)	NYC Sea Gypsies	8/2/2000	40 00.18000N	074 00.16002W
59	Dive Council Reef	18 Reef Balls (clump)	NJ Council of Dive Clubs	8/2/2000	40 00.22998N	074 00.12000W
60	McGurr's Tug	85' Tugboat - "McGurr's Tug" (Patrick McHugh)	Ocean Wreck Divers	9/12/2000	40 02.47002N	073 59.59998W
61	Thal's Fin-Alley Reef	15 Reef Balls (clump)	James W. Thal	11/13/2000	40 00.01998N	073 59.59998W
62	Bill L. Sidney Reef	15 Reef Balls (clump)	Wanda Sidney & Friends	11/13/2000	40 01.39002N	073 59.38998W
63	GPPCBA Reef	20 Reef Balls (clump); (near tugboat "Colleen"- ID# 4)	Greater Point Pleasant Charter Boat Association	11/13/2000	40 02.79000N	073 59.35002W
64	Salty Rinse Reef	12 Reef Balls (clump)	Robert C. Shawger Jr.	8/2/2000	40 00.18000N	074 00.10002W
65	Joan LaRie III	95' Tugboat- "Joan LaRie III" (formerly - "Brooklyn")	Friends of Norma K.	10/30/2001	40 03.39000N	073 59.55000W

AXEL CARLSON REEF

ID #	Name	Description	Sponsor	Date Deployed	Latitude	Longitude
66	The Jim Lynch Reef	178' Tanker Barge - "Jim Lynch"	Greater Point Pleasant Charter Boat Association	10/30/2001	40 02.83998N	073 59.58000W
67	Norma K. Rock Pile Reef	Concrete rubble	Friends of Norma K.	12/5/2001	40 01.30998N	073 59.47998W
68	Vivian Johnson Reef	40 Reef Balls (clump)	Les & Georgette Johnson	12/7/2001	40 01.20000N	073 59.40000W
69	DVD/Feyti Reef	10 Reef Balls	Delaware Valley Divers and Joe Feyti	12/7/2001	40 01.20000N	073 59.20002W
70	Bolger Reef	20 Reef Balls (clump)	Gerard Bolger	1/15/2002	40 01.54998N	073 59.98998W
71	Sam & Carly's Reef	20 Reef Balls (clump)	Communications Cable Services Inc.	1/15/2002	40 01.54002N	073 59.59998W
72	Reef Balls	10 Reef Balls	N/A	1/15/2002	40 01.54998N	073 59.77998W
73	Jim Dwyer/John Walton Reef	12 Reef Balls	Jim Dwyer	2/14/2002	40 01.38000N	073 59.98002W
74	Karpowicz Brothers Reef	18 Reef Balls	John Karpowicz	2/14/2002	40 01.35000N	074 00.19998W
75	Manasquan River Marlin and Tuna Club Reef I	20 Reef Balls	Manasquan River Marlin and Tuna Club	2/14/2002	40 01.27002N	073 59.47998W
76	E.J. Lejune Memorial Reef	35 Reef Balls	Joe & Linda Lejune and Friends	2/22/2002	40 01.81998N	073 59.40000W
77	Ken Hall Memorial Reef	16 Reef Balls	Friends and Co-workers	2/22/2002	40 01.81002N	073 59.16000W
78	Visceglia Reef	20 Reef Balls	Summit Associates Inc.	3/1/2002	40 00.79998N	073 59.98998W
79	Michael P. Sendecki Reef	30 Reef Balls	Family & Friends	3/1/2002	40 00.78000N	074 00.40002W
80	Wreck	Small, old wreck	John Hawryluk		40 03.58998N	073 59.76000W
81	Wreck	Small,old wreck	John Hawryluk		40 00.81000N	073 59.97000W
82	Rump	Big barge - "Rump"	John Hawryluk		40 00.58998N	074 00.22002W
83	John Hawryluk Reef	Rocks (snag)	John Hawryluk		40 00.58002N	074 00.37998W
84	Boat Mold	Boat mold (AS/snag)	John Hawryluk		40 01.06998N	073 59.80002W
85	Barbara Ann	75' Deck Barge - "Barbara Ann"	NJscuba.com; Les Swenson	6/27/2003	40 03.55998N	073 59.29998W
86	Patrick S. Murphy	50' Deck Barge - "Patrick S. Murphy"	CSB Friends of Patrick Murphy; Les Swanson	6/27/2003	40 03.58998N	073 59.38998W
87	Robert "Bob" Koch Reef	Concrete castings (x50)	North East Mako Owners Club	8/14/2003	40 03.61998N	073 59.59002W
88	Manasquan River Marlin and Tuna Club Reef II	Concrete castings (x50)	Manasquan River Marlin and Tuna Club	8/14/2003	40 03.57000N	073 59.79000W
89	Manasquan River Marlin and Tuna Club Reef II	Concrete castings (x50)	Manasquan River Marlin and Tuna Club	8/14/2003	40 03.16998N	073 58.81998W
90	Greater Point Pleasant Charter Boat Assoc. Reef II	Concrete castings (x50)	Greater Point Pleasant Charter Boat Association; Crown Distibuters; Budweiser	8/14/2003	40 02.95998N	073 59.14998W
91	Greater Point Pleasant Charter Boat Assoc. Reef III	Concrete castings (x50)	Greater Point Pleasant Charter Boat Association; Crown Distibuters; Budweiser	8/14/2003	40 02.74998N	073 58.99998W
92	Greater Point Pleasant Charter Boat Assoc. Reef IV	Concrete castings (x50)	Greater Point Pleasant Charter Boat Association; Crown Distibuters; Budweiser	8/14/2003	40 02.35998N	073 59.02002W
93	JSCA-RBBC Reef	Concrete castings (x50)	Jersey Coast Shark Anglers, Riviera Beach Boat Club	8/14/2003	40 01.56000N	073 59.17998W

AXEL CARLSON REEF

ID #	Name	Description	Sponsor	Date Deployed	Latitude	Longitude
94	Grady White Reef	Concrete castings (x50)	New Jersey Grady White Mariners Club	8/14/2003	40 00.75000N	073 59.38998W
95	Margaret Delaney Reef	Concrete castings (x70)	Family & Friends	8/14/2003	40 00.75000N	073 59.80002W
96	Visceglia Reef II	Concrete castings (x70)	John B. Visceglia	8/14/2003	40 00.70002N	073 59.77002W
97	Captain Donna's Ridge	Rock Mountain - "Captain Donna's Ridge"	Greater Point Pleasant Charter Boat Association	12/10/2003	40 02.41998N	073 59.20998W
98	Dredge Rock	Rock	KVK (Kill Van Kill) 8 - USACOE (U.S. Army Corps of Engineers) [717]	7/14/2004	40 02.41002N	073 59.17998W
99	Dredge Rock	Rock	KVK 8 - USACOE [727]	8/6/2004	40 00.48000N	074 00.01002W
100	Marut Peak Reef	Rock	KVK 8 - USACOE [725]; The Marut Family	8/2/2004	40 00.91998N	073 59.50002W
101	Marut Peak Reef	Rock	KVK 8 - USACOE [725]; The Marut Family	8/1/2004	40 01.63002N	073 59.29998W
102	Marut Peak Reef	Rock	KVK 8 - USACOE [725]; The Marut Family	6/25/2004	40 02.41002N	073 59.32998W
103	Marut Peak Reef	Rock	KVK 8 - USACOE [725]; The Marut Family	7/7/2004	40 01.60998N	073 59.29998W
104	Marut Peak Reef	Rock	KVK 8 - USACOE [725]; The Marut Family	7/8/2004	40 00.91998N	073 59.47998W
105	Dredge Rock	Rock	KVK 8 - USACOE [715]	7/9/2004	40 00.52002N	073 59.98998W
106	Dredge Rock	Rock	KVK 8 - USACOE [716]	7/11/2004	40 03.61998N	073 58.99002W
107	VERONICA M	110' Tugboat - "Veronica M"	Herb Segars; Ann E. Clark Foundation	11/10/2004	40 03.10002N	073 59.02998W
108	Dredge Rock	Rock	Howland Hook Port Authority	11/14/2004	40 02.40000N	073 59.19000W
109	Dredge Rock	Rock	Howland Hook Port Authority	11/15/2004	40 02.41002N	073 59.20002W
110	Dredge Rock	Rock	Howland Hook Port Authority	11/17/2004	40 02.41002N	073 59.20002W
111	Dredge Rock	Rock	Howland Hook Port Authority	11/24/2004	40 02.41002N	073 59.20002W
112	Dredge Rock	Rock	Howland Hook Port Authority	11/26/2004	40 02.44002N	073 59.20002W
113	Dredge Rock	Rock	Howland Hook Port Authority	11/29/2004	40 02.44002N	073 59.20998W
114	MRMTC Members Memorial Reef	105' Tugboat - "Bay King"	Club (MRMTC); Ann E. Clark Foundation	1/9/2005	40 03.19002N	073 59.28000W
115	Four of Clubs	75' Tugboat - "Four of Clubs" (formerly - "Megan Sue")	Manasquan River Marlin and Tuna Club; Ann E. Clark Foundation; Delaware Valley Divers; Ocean Wreck Divers	1/9/2005	40 03.18000N	073 59.31000W
116	Dredge Rock	Rock	U.S. Army Corps of Engineers (USACOE) [1-0]	3/23/2005	40 00.30000N	074 00.28998W
117	Dredge Rock	Rock	USACOE [4-0]	3/26/2005	40 03.15000N	073 59.80998W
118	Dredge Rock	Rock	USACOE [5-0]	3/27/2005	40 03.15000N	073 59.80002W
119	Dredge Rock	Rock	USACOE [6-51]	3/27/2005	40 03.13998N	073 59.80998W
120	Dredge Rock	Rock	USACOE [7-51]	3/28/2005	40 03.13002N	073 59.80002W
121	Dredge Rock	Rock	USACOE [10-51]	3/30/2005	40 03.03000N	073 59.80002W

AXEL CARLSON REEF

ID #	Name	Description	Sponsor	Date	Latitude	Longitude
				Deployed		
122	Dredge Rock	Rock	USACOE [20-50]	4/5/2005	40 03.03000N	073 59.80002W
123.1	Dredge Rock	Rock	USACOE [21-50]	4/6/2005	40 03.03000N	073 59.80002W
123.2	Dredge Rock	Rock	USACOE [146-3]	9/15/2005	40 00.60000N	074 00.48000W
124	Dredge Rock	Rock	USACOE [22-50]	4/7/2005	40 03.03000N	073 59.80002W
125	Lyons Family Reef	Rock	USACOE [58-1]; Family & Friends	5/12/2005	40 00.30000N	074 00.46002W
126	Dredge Rock	Rock	USACOE [57-1]	5/12/2005	40 00.43002N	074 00.49998W
127	Jen's Retreat Reef	Rock	USACOE [69-4]; Family & Friends	5/20/2005	40 00.33000N	074 00.40002W
128	Dredge Rock	Rock	USACOE [67-7]	5/19/2005	40 01.35000N	074 00.37002W
129	Dredge Rock	Rock	USACOE [66-1]	5/18/2005	40 00.43002N	074 00.49998W
130	Dredge Rock	Rock	USACOE [63-1]	5/16/2005	40 00.42000N	074 00.49998W
131	Dredge Rock	Rock	USACOE [59-4]	5/13/2005	40 00.27000N	074 00.40998W
132	Dredge Rock	Rock	USACOE [62-1]	5/15/2005	40 00.46002N	074 00.51000W
133	Dredge Rock	Rock	USACOE [72-4]	5/22/2005	40 00.31998N	074 00.37998W
134	Dredge Rock	Rock	USACOE [81-0]	5/31/2005	40 00.42000N	074 00.39000W
135	Dredge Rock	Rock	USACOE [76-4]	5/27/2005	40 00.31998N	074 00.39000W
136	Joseph Ertle Memorial Reef	Rock	USACOE [82-5]; Family	6/4/2005	40 00.43002N	074 00.40002W
137	Dredge Rock	Rock	USACOE [83-5]	6/4/2005	40 00.34002N	074 00.40002W
138	Dredge Rock	Rock	USACOE [85-5]	6/6/2005	40 00.43002N	074 00.40002W
139	Dredge Rock	Rock	USACOE [86-5]	6/7/2005	40 00.43002N	074 00.40998W
140	Joseph & Marie Ertle Memorial Reef	Rock	USACOE [88-6]; Family	6/9/2005	40 00.40002N	074 00.40002W
141	Drifters Reef	Concrete pipes (x410)	Greater Point Pleasant Charter Boat Assoc.; Manasquan River Marlin and Tuna Club; Ann E. Clark Foundation	6/9/2005	40 00.21900N	073 59.58000W
142	Captain Ken Keller Reef	Concrete pipes (x25)	Family & Friends of Captain Ken Keller	6/9/2005	40 00.24498N	073 59.58000W
143	Dredge Rock	Rock	USACOE [87-5]	6/8/2005	40 00.43998N	074 00.40002W
144	Dredge Rock	Rock	USACOE [100-6]	6/17/2005	40 01.03998N	074 00.40002W
145	Dredge Rock	Rock	USACOE [99-0] (Target missed)		40 01.03998N	074 00.40998W
146	Dredge Rock	Rock	USACOE [101-6]	6/21/2005	40 01.03002N	074 00.40002W
147	Dredge Rock	Rock	USACOE [106-7]	6/26/2005	40 01.12998N	074 00.40002W
148	Dredge Rock	Rock	USACOE [105-7]	6/25/2005	40 01.12998N	074 00.40002W
149	Bomber's Ridge Reef	Rock	USACOE [104-7]; Bobby & Hannah Helbig; Callie & Andrea Wilber	6/24/2005	40 01.12998N	074 00.39000W
150	Dredge Rock	Rock	USACOE [109-7]	7/5/2005	40 01.12002N	074 00.40002W
151	Dredge Rock	Rock	USACOE [108-7]	7/4/2005	40 01.12998N	074 00.39000W
152	Dredge Rock	Rock	USACOE [113-7] (Target was 26 but missed outside)	7/10/2005	40 02.91000N	074 00.01002W
153	Dredge Rock	Rock	USACOE [114-26]	7/11/2005	40 02.92002N	074 00.03000W

AXEL CARLSON REEF

ID #	Name	Description	Sponsor	Date Deployed	Latitude	Longitude
154	John Sofield Memorial Reef	Rock	USACOE [115-9]; HMC Family & Friends	7/13/2005	40 01.62000N	074 00.19998W
155	Dredge Rock	Rock	USACOE [116-9]	7/15/2005	40 01.62000N	074 00.19002W
156	Dredge Rock	Rock	USACOE [119-9]	7/20/2005	40 01.62000N	074 00.19998W
157	Dredge Rock	Rock	USACOE [118-9]	7/19/2005	40 01.62000N	074 00.19998W
158	Dredge Rock	Rock	USACOE [117-9]	7/17/2005	40 01.63002N	074 00.19002W
159	Dredge Rock	Rock	USACOE [120-10]	7/21/2005	40 01.72002N	074 00.19002W
160	Dredge Rock	Rock	USACOE [129-10]	8/1/2005	40 01.72002N	074 00.19002W
161	HMC Family & Friends Reef	Rock	USACOE [130-10] HMC Family & Friends	8/3/2005	40 01.72002N	074 00.19998W
162	HMC Family & Friends Reef	Rock	USACOE [131-10] HMC Family & Friends	8/4/2005	40 01.71000N	074 00.19998W
163	Memorial Reef	Rock	USACOE [133-11] Jim Modiszewski	8/20/2005	40 01.84002N	074 00.19998W
164	Dredge Rock	Rock	USACOE [134-10]	8/12/2005	40 01.72998N	074 00.19002W
165	Dredge Rock	Rock	USACOE [140-12]	8/23/2005	40 01.92000N	074 00.19998W
166	Dredge Rock	Rock	USACOE [135-0] (Target was 41 but missed outside)	8/13/2005	40 01.84002N	074 00.19998W
167	Dredge Rock	Rock	USACOE [136-11]	8/15/2005	40 01.84002N	074 00.22002W
168	Dredge Rock	Rock	USACOE [137-13]	8/16/2005	40 02.05002N	074 00.19998W
169	Dredge Rock	Rock	USACOE [138-11]	8/18/2005	40 01.84002N	074 00.19998W
170	Dredge Rock	Rock	USACOE [139-11]	8/20/2005	40 01.84002N	074 00.19002W
171	Dredge Rock	Rock	USACOE [143-12]	8/29/2005	40 01.92000N	074 00.19998W
172	Dredge Rock	Rock	USACOE [141-12]	8/25/2005	40 01.93002N	074 00.19998W
173	Dredge Rock	Rock	USACOE [142-12]	8/28/2005	40 01.92000N	074 00.19998W
174	Dredge Rock	Rock	USACOE [144-12]	8/30/2005	40 01.90998N	074 00.19998W
175	Dredge Rock	Rock	USACOE [152-13]	9/9/2005	40 02.05002N	074 00.19002W
176	Dredge Rock	Rock	USACOE [156-13]	9/14/2005	40 02.05002N	074 00.21000W
177	Dredge Rock	Rock	USACOE [164-13]	9/22/2005	40 02.04000N	074 00.19998W
178	Dredge Rock	Rock	USACOE [166-13]	9/25/2005	40 02.05998N	074 00.19998W
179	Dredge Rock	Rock	USACOE [169-26] (Target missed)	9/29/2005	40 02.95998N	073 59.98998W
180	Dredge Rock	Rock	USACOE [194-19]	10/21/2005	40 02.22000N	074 00.00000W
181	Dredge Rock	Rock	USACOE [195-19]	10/21/2005	40 02.22000N	074 00.00000W
182	Dredge Rock	Rock	USACOE [218-51]	11/1/2005	40 03.10998N	073 59.79000W
183	Dredge Rock	Rock	USACOE [219-19] (Target missed)	11/3/2005	40 02.20998N	074 00.00000W
184	Dredge Rock	Rock	USACOE [220-19]	11/4/2005	40 02.20998N	074 00.00000W
185	Dredge Rock	Rock	USACOE [222-20]	11/6/2005	40 02.32002N	074 00.00000W
186	Dredge Rock	Rock	USACOE [223-20]	11/7/2005	40 02.32002N	073 59.98998W
187	Dredge Rock	Rock	USACOE [221-19]	11/5/2005	40 02.22000N	074 00.01002W
188	Dredge Rock	Rock	USACOE [227-20] (Target missed)	11/12/2005	40 02.40000N	074 00.00000W
189	Dredge Rock	Rock	USACOE [228-21]	11/12/2005	40 02.41998N	073 59.98998W
190	Dredge Rock	Rock	USACOE [229-21]	11/12/2005	40 02.41002N	073 59.98998W

AXEL CARLSON REEF

ID #	Name	Description	Sponsor	Date	Latitude	Longitude
				Deployed		
191	Dredge Rock	Rock	USACOE [230-21]	11/14/2005	40 02.41998N	074 00.00000W
192	Dredge Rock	Rock	USACOE [231-21]	11/16/2005	40 02.41998N	073 59.98998W
193	Dredge Rock	Rock	USACOE [225-20]	11/10/2005	40 02.31000N	073 59.98998W
194	Dredge Rock	Rock	USACOE [226-20]	11/11/2005	40 02.32002N	074 00.00000W
195	Dredge Rock	Rock	USACOE [235-19]	11/19/2005	40 02.23002N	074 00.00000W
196	Dredge Rock	Rock	USACOE [236-20]	11/20/2005	40 02.31000N	073 59.98998W
197	Dredge Rock	Rock	USACOE [247-21]	12/2/2005	40 02.41002N	073 59.98998W
198	Dredge Rock	Rock	USACOE [130-0] (Target cell was 2)	9/2/2005	40 00.52998N	074 00.51000W
199	Dredge Rock	Rock	USACOE [143-0] (Target cell was 3)	9/12/2005	40 00.60000N	074 00.51000W
200	Dredge Rock	Rock	USACOE [155-0] (Target cell was 3)	10/1/2005	40 00.64002N	074 00.49998W
201	Dredge Rock	Rock	USACOE [192-0] (Target cell was 15)	11/2/2005	40 02.11002N	074 00.10998W
202	Dredge Rock	Rock	USACOE [219-0] (Target cell was 28)	11/27/2005	40 02.41002N	073 59.89998W
203	Dredge Rock	Rock	USACOE [223-0] (Target cell was 29)	12/1/2005	40 02.41002N	073 59.89998W
204	Dredge Rock	Rock	USACOE [226-0] (Target cell was 30)	12/3/2005	40 02.41002N	073 59.91000W
205	Dredge Rock	Rock	USACOE [232-0] (Target cell was 32)	12/7/2005	40 02.41002N	073 59.92002W
209	Dredge Rock	Rock	USACOE [135-2]	9/6/2005	40 00.52998N	074 00.51000W
210	Dredge Rock	Rock	USACOE [136-2]	9/7/2005	40 00.52002N	074 00.49998W
211	Dredge Rock	Rock	USACOE [137-3]	9/8/2005	40 00.61998N	074 00.49002W
212	Dredge Rock	Rock	USACOE [138-3]	9/8/2005	40 00.63000N	074 00.48000W
214	Dredge Rock	Rock	USACOE [152-3]	9/28/2005	40 00.63000N	074 00.49998W
215	Dredge Rock	Rock	USACOE [156-3]	10/1/2005	40 00.63000N	074 00.49002W
216	Dredge Rock	Rock	USACOE [73-4]	5/23/2005	40 00.31002N	074 00.39000W
217	Dredge Rock	Rock	USACOE [102-6]	6/22/2005	40 01.03998N	074 00.40002W
218	Dredge Rock	Rock	USACOE [103-6]	6/23/2005	40 01.03002N	074 00.39000W
219	Dredge Rock	Rock	USACOE [158-8]	10/4/2005	40 01.23000N	074 00.40002W
220	Dredge Rock	Rock	USACOE [174-8]	10/19/2005	40 01.21998N	074 00.40002W
221	Dredge Rock	Rock	USACOE [175-8]	10/20/2005	40 01.23000N	074 00.39000W
222	Dredge Rock	Rock	USACOE [178-8]	10/22/2005	40 01.24002N	074 00.40002W
223	Dredge Rock	Rock	USACOE [132-11]	8/7/2005	40 01.84998N	074 00.19002W
224	John "Butch" Karpowicz Reef	Rock	USACOE [179-14]; Family & Friends	10/22/2005	40 01.96998N	074 00.09000W
225	John "Butch" Karpowicz Reef	Rock	USACOE [180-14]; Family & Friends	10/23/2005	40 02.02002N	074 00.10002W
226	Dredge Rock	Rock	USACOE [185-14]	10/28/2005	40 01.99998N	074 00.10002W
227	Dredge Rock	Rock	USACOE [186-14]	10/29/2005	40 02.01000N	074 00.10002W
228	John David Karpowicz Reef	Rock	USACOE [181-15]; Family & Friends	10/24/2005	40 02.10000N	074 00.10998W
229	Dredge Rock	Rock	USACOE [187-15]	10/30/2005	40 02.10000N	074 00.10998W
230	Dredge Rock	Rock	USACOE [188-15]	10/30/2005	40 02.11002N	074 00.10002W
231	John David Karpowicz	Rock	USACOE [194-16]	11/4/2005	40 02.20998N	074 00.10002W
232	Dredge Rock	Rock	USACOE [195-16]	11/4/2005	40 02.20998N	074 00.10002W

AXEL CARLSON REEF

ID #	Name	Description	Sponsor	Date Deployed	Latitude	Longitude
233	Dredge Rock	Rock	USACOE [196-16]	11/5/2005	40 02.22000N	074 00.10002W
234	Dredge Rock	Rock	USACOE [202-18]	11/11/2005	40 02.13000N	073 59.98998W
235	Dredge Rock	Rock	USACOE [203-18]	11/11/2005	40 02.11998N	074 00.00000W
236	Dredge Rock	Rock	USACOE [206-18]	11/14/2005	40 02.11998N	074 00.00000W
237	Dredge Rock	Rock	USACOE [208-18]	11/16/2005	40 02.13000N	074 00.00000W
238	Dredge Rock	Rock	USACOE [213-27]	11/21/2005	40 02.10000N	073 59.89002W
239	Dredge Rock	Rock	USACOE [216-27]	11/24/2005	40 02.11002N	073 59.89998W
240	Dredge Rock	Rock	USACOE [217-28]	11/25/2005	40 02.22000N	073 59.89998W
241	Dredge Rock	Rock	USACOE [220-28]	11/28/2005	40 02.22000N	073 59.89998W
242	Dredge Rock	Rock	USACOE [221-28]	11/30/2005	40 02.22000N	073 59.89998W
243	Dredge Rock	Rock	USACOE [222-28]	12/1/2005	40 02.22000N	073 59.92002W
244	Dredge Rock	Rock	USACOE [224-29]	12/2/2005	40 02.32002N	073 59.89998W
245	Dredge Rock	Rock	USACOE [207-30]	11/15/2005	40 02.41002N	073 59.91000W
246	Dredge Rock	Rock	USACOE [225-30]	12/3/2005	40 02.43000N	073 59.89002W
247	Dredge Rock	Rock	USACOE [205-31]	11/13/2005	40 02.49000N	073 59.89002W
248	Dredge Rock	Rock	USACOE [228-31]	12/4/2005	40 02.47002N	073 59.89998W
249	Dredge Rock	Rock	USACOE [229-31]	12/5/2005	40 02.52000N	073 59.89998W
250	Dredge Rock	Rock	USACOE [230-31]	12/5/2005	40 02.50998N	073 59.92002W
251	Dredge Rock	Rock	USACOE [231-32]	12/6/2005	40 02.62998N	073 59.89998W
252	Dredge Rock	Rock	USACOE [233-32]	12/7/2005	40 02.62998N	073 59.89002W
253	Dredge Rock	Rock	USACOE [234-32]	12/8/2005	40 02.61000N	073 59.89002W
254	Dredge Rock	Rock	USACOE [235-32]	12/8/2005	40 02.62998N	073 59.89998W
255	Dredge Rock	Rock	USACOE [193-35]	11/3/2005	40 02.89002N	073 59.91000W
256	Dredge Rock	Rock	USACOE [209-36]	11/17/2005	40 02.98002N	073 59.91000W
257	Dredge Rock	Rock	USACOE [197-39]	11/6/2005	40 02.58000N	073 59.89998W
258	Dredge Rock	Rock	USACOE [240-0] (target was 34)	12/12/2005	40 02.83002N	073 59.92002W
259	Dredge Rock	Rock	USACOE [236-33]	12/9/2005	40 02.74002N	073 59.89998W
260	Dredge Rock	Rock	USACOE [237-33]	12/10/2005	40 02.73000N	073 59.89998W
261	Dredge Rock	Rock	USACOE [238-33]	12/10/2005	40 02.71002N	073 59.89002W
262	Dredge Rock	Rock	USACOE [239-33]	12/11/2005	40 02.73000N	073 59.89002W
263	Dredge Rock	Rock	USACOE [227-0] (target was 30)	12/4/2005	40 02.41002N	073 59.88000W
264	Lucky 7	65' Commercial Fishing Vessel - "Snug Harbor" (Lucky 7)	Manasquan River Marlin and Tuna Club - Renamed "Lucky 7" (2006)	1/28/2006	40 03.45000N	073 58.99002W
265	Dredge Rock	Rock	USACOE [268-54]	1/7/2006	40 02.13000N	073 59.70000W
266	Dredge Rock	Rock	USACOE [295-52]	1/25/2006	40 03.73998N	073 59.79000W
267	Dredge Rock	Rock	USACOE [296-52]	1/26/2006	40 03.73002N	073 59.80002W
268	Dredge Rock	Rock	USACOE [297-53]	1/27/2006	40 03.81000N	073 59.80002W
269	Dredge Rock	Rock	USACOE [298-52]	1/28/2006	40 03.72000N	073 59.77998W
270	Dredge Rock	Rock	USACOE [299-54]	1/29/2006	40 02.13000N	073 59.71998W
271	Dredge Rock	Rock	USACOE [300-55]	1/30/2006	40 02.23002N	073 59.71998W
272	Dredge Rock	Rock	USACOE [391-52]	1/31/2006	40 03.73002N	073 59.82000W

AXEL CARLSON REEF

ID #	Name	Description	Sponsor	Date		
				Deployed	Latitude	Longitude
273	Dredge Rock	Rock	USACOE [303-53]	2/1/2006	40 03.82002N	073 59.80998W
274	Dredge Rock	Rock	USACOE [302-52]	2/1/2006	40 03.73002N	073 59.80002W
275	Dredge Rock	Rock	USACOE [304-53]	2/2/2006	40 03.81000N	073 59.79000W
276	Dredge Rock	Rock	USACOE [305-53]	2/3/2006	40 03.81000N	073 59.80998W
277	Dredge Rock	Rock	USACOE [306-55]	2/3/2006	40 02.20002N	073 59.71002W
278	Dredge Rock	Rock	USACOE [307-53]	2/4/2006	40 03.79998N	073 59.80998W
279	Dredge Rock	Rock	USACOE [308-53]	2/5/2006	40 03.81000N	073 59.80002W
280	Dredge Rock	Rock	USACOE [309-55]	2/6/2006	40 02.20998N	073 59.70000W
281	Dredge Rock	Rock	USACOE [310-55]	2/6/2006	40 01.12998N	073 59.59998W
282	Dredge Rock	Rock	USACOE [312-55]	2/8/2006	40 02.20002N	073 59.71002W
283	Dredge Rock	Rock	USACOE [311-58]	2/7/2006	40 01.09998N	073 59.59998W
284	Dredge Rock	Rock	USACOE [313-54]	2/9/2006	40 02.11998N	073 59.70000W
285	Dredge Rock	Rock	USACOE [314-54]	2/10/2006	40 02.10000N	073 59.70000W
286	Dredge Rock	Rock	USACOE [316-58]	2/14/2006	40 01.11000N	073 59.59998W
287	Dredge Rock	Rock	USACOE [317-58]	2/15/2006	40 01.11000N	073 59.61000W
288	Dredge Rock	Rock	USACOE [318-54]	2/16/2006	40 02.13000N	073 59.71002W
289	Dredge Rock	Rock	USACOE [319-58]	2/16/2006	40 01.12998N	073 59.59998W
290	Dredge Rock	Rock	USACOE [292-66]	2/24/2006	40 02.29998N	073 59.40000W
291	Dredge Rock	Rock	USACOE [303-56]	3/3/2006	40 00.82002N	073 59.59998W
292	Dredge Rock	Rock	USACOE [304-56]	3/6/2006	40 00.81000N	073 59.59998W
293	Dredge Rock	Rock	USACOE [305-56]	3/8/2006	40 00.81000N	073 59.59998W
294	Dredge Rock	Rock	USACOE [306-60]	3/10/2006	40 02.22000N	073 59.59002W
295	Dredge Rock	Rock	USACOE [307-56]	3/12/2006	40 00.81000N	073 59.59002W
296	Dredge Rock	Rock	USACOE [307-56]	3/12/2006	40 00.81000N	073 59.59002W
297	Dredge Rock	Rock	USACOE [310-56]	3/19/2006	40 00.82002N	073 59.59002W
298	Dredge Rock	Rock	USACOE [315-57]	3/22/2006	40 01.81002N	073 59.59998W
299	Dredge Rock	Rock	USACOE [316-57]	3/23/2006	40 01.00002N	073 59.59002W
300	Dredge Rock	Rock	USACOE [317-57]	3/24/2006	40 01.00998N	073 59.59998W
301	Dredge Rock	Rock	USACOE [318-59]	3/25/2006	40 02.11998N	073 59.59998W
303	Dredge Rock	Rock	USACOE [474-34]	4/25/2006	40 02.83998N	073 59.89998W
304	Dredge Rock	Rock (dark gray)	USACOE [475-1]	4/29/2006	40 02.82000N	073 59.91000W
305	Dredge Rock	Rock (blue-gray)	USACOE [479-40]	5/2/2006	40 03.45000N	073 59.89998W
306	Dredge Rock	Rock (blue-gray)	USACOE [482-40]	5/3/2006	40 03.42000N	073 59.91000W
307	Dredge Rock	Rock (blue-gray)	USACOE [483-38]	5/3/2006	40 03.22998N	073 59.89998W
308	Dredge Rock	Rock (dark gray)	USACOE [484-38]	5/3/2006	40 03.18000N	073 59.89002W
309	Dredge Rock	Rock (blue-gray)	USACOE [486-62]	5/4/2006	40 02.23002N	073 59.50998W
310	Dredge Rock	Rock (dark gray)	USACOE [487-37]	5/4/2006	40 03.10002N	073 59.89002W
311	Dredge Rock	Rock (blue-gray)	USACOE [488-40]	5/4/2006	40 03.42000N	073 59.89998W
312	Dredge Rock	Rock (blue-gray)	USACOE [488-40]	5/4/2006	40 03.42000N	073 59.89998W
313	Dredge Rock	Rock (dark gray)	USACOE [489-36]	5/5/2006	40 03.01002N	073 59.89002W
314	Dredge Rock	Rock (blue-gray)	USACOE [491-40]	5/5/2006	40 03.42000N	073 59.89998W

AXEL CARLSON REEF

ID #	Name	Description	Sponsor	Date	Latitude	Longitude
				Deployed		
315	Dredge Rock	Rock (blue-gray)	USACOE [492-39]	5/6/2006	40 03.33000N	073 59.92002W
316	Dredge Rock	Rock (blue-gray)	USACOE [494-38]	5/7/2006	40 03.21000N	073 59.91000W
317	Dredge Rock	Rock (blue-gray)	USACOE [496-37]	5/7/2006	40 03.13002N	073 59.91000W
318	Dredge Rock	Rock (blue-gray)	USACOE [501-36]	5/9/2006	40 03.03000N	073 59.89998W
319	Dredge Rock	Rock (dark gray)	USACOE [503-35]	5/10/2006	40 02.92002N	073 59.89002W
320	Dredge Rock	Rock (blue-gray)	USACOE [505-39]	5/11/2006	40 03.33000N	073 59.89002W
321	Dredge Rock	Rock (blue-gray)	USACOE [508-38]	5/12/2006	40 03.22998N	073 59.89998W
322	Dredge Rock	Rock (blue-gray)	USACOE [510-37]	5/12/2006	40 03.13002N	073 59.91000W
323	Dredge Rock	Rock (blue-gray)	USACOE [512-37]	5/13/2006	40 03.13002N	073 59.91000W
324	Dredge Rock	Rock (blue-gray)	USACOE [514-37]	5/13/2006	40 03.13002N	073 59.89998W
325	Dredge Rock	Rock (blue-gray)	USACOE [516-36]	5/14/2006	40 03.03000N	073 59.89998W
326	Dredge Rock	Rock (blue-gray)	USACOE [517-38]	5/15/2006	40 03.22998N	073 59.91000W
327	Dredge Rock	Rock (blue-gray)	USACOE [520-36]	5/15/2006	40 02.98998N	073 59.89998W
328	Dredge Rock	Rock (blue-gray)	USACOE [521-35]	5/16/2006	40 02.92002N	073 59.89998W
329	Dredge Rock	Rock (blue-gray)	USACOE [524-34]	5/16/2006	40 02.80998N	073 59.89998W
330	Dredge Rock	Rock (light gray)	USACOE [525-34]	5/17/2006	40 02.80002N	073 59.92002W
331	Dredge Rock	Rock (blue-gray)	USACOE [527-34]	5/17/2006	40 02.82000N	073 59.89998W
332	Dredge Rock	Rock (light gray)	USACOE [528-34]	5/18/2006	40 02.80998N	073 59.92002W
333	Dredge Rock	Rock (blue-gray)	USACOE [529-62]	5/18/2006	40 02.20998N	073 59.50002W
334	Dredge Rock	Rock (blue-gray)	USACOE [530-62]	5/19/2006	40 02.20998N	073 59.50998W
335	Dredge Rock	Rock (blue-gray)	USACOE [531-58]	5/20/2006	40 01.11000N	073 59.59002W
336	Dredge Rock	Rock (blue-gray)	USACOE [531-58]	5/20/2006	40 01.11000N	073 59.59002W
337	Dredge Rock	Rock (blue-gray)	USACOE [532-62]	5/21/2006	40 02.20002N	073 59.49000W
338	Dredge Rock	Rock (blue-gray)	USACOE [533-61]	5/21/2006	40 02.11998N	073 59.50998W
339	Dredge Rock	Rock (blue-gray)	USACOE [535-62]	5/22/2006	40 02.22000N	073 59.49000W
340	Dredge Rock	Rock (blue-gray)	USACOE [536-61]	5/23/2006	40 02.11002N	073 59.50002W
341	Dredge Rock	Rock (blue-gray)	USACOE [537-35]	5/23/2006	40 02.89002N	073 59.91000W
342	Dredge Rock	Rock (blue-gray)	USACOE [538-35]	5/24/2006	40 02.92002N	073 59.89998W
343	Dredge Rock	Rock (blue-gray)	USACOE [539-40]	5/24/2006	40 03.40998N	073 59.89998W
344	Dredge Rock	Rock (blue-gray)	USACOE [541-39]	5/25/2006	40 03.31998N	073 59.91000W
345	Dredge Rock	Rock (blue-gray)	USACOE [542-35]	5/25/2006	40 02.91000N	073 59.89998W
346	Dredge Rock	Rock (blue-gray)	USACOE [542-35]	5/25/2006	40 02.91000N	073 59.89998W
347	Dredge Rock	Rock (blue-gray)	USACOE [546-38]	5/26/2006	40 03.21000N	073 59.89998W
348	Dredge Rock	Rock (blue-gray)	USACOE [546-38]	5/26/2006	40 03.21000N	073 59.89998W
349	Dredge Rock	Rock (blue-gray)	USACOE [548-37]	5/27/2006	40 03.10998N	073 59.89002W
350	Dredge Rock	Rock (blue-gray)	USACOE [551-38]	5/28/2006	40 03.21000N	073 59.89998W
351	Dredge Rock	Rock (blue-gray)	USACOE [553-37]	5/28/2006	40 03.10998N	073 59.89998W
352	Dredge Rock	Rock (blue-gray)	USACOE [555-38]	5/29/2006	40 03.19998N	073 59.89002W
353	Dredge Rock	Rock (dark gray)	USACOE [556-36]	5/29/2006	40 02.98998N	073 59.89998W
354	Dredge Rock	Rock (blue-gray)	USACOE [557-43]	5/30/2006	40 02.29002N	073 59.82000W
355	Dredge Rock	Rock (light gray)	USACOE [558-36]	5/30/2006	40 03.00000N	073 59.91000W

AXEL CARLSON REEF

ID #	Name	Description	Sponsor	Date	Latitude	Longitude
				Deployed		
356	Dredge Rock	Rock (blue-gray)	USACOE [559-49]	5/30/2006	40 02.91000N	073 59.79000W
357	Dredge Rock	Rock (dark gray)	USACOE [560-41]	5/31/2006	40 02.11002N	073 59.79000W
358	Dredge Rock	Rock (dark gray)	USACOE [562-41]	5/31/2006	40 02.11002N	073 59.80002W
359	Dredge Rock	Rock (blue-gray)	USACOE [561-49]	5/31/2006	40 02.91000N	073 59.79000W
360	Dredge Rock	Rock (blue-gray)	USACOE [564-49]	6/1/2006	40 02.91000N	073 59.77998W
361	Dredge Rock	Rock (blue-gray)	USACOE [565-41]	6/1/2006	40 02.11002N	073 59.80002W
362	Dredge Rock	Rock (blue-gray)	USACOE [563-49]	5/31/2006	40 02.91000N	073 59.80002W
363	Dredge Rock	Rock (red)	USACOE [358-46]	6/1/2006	40 02.01000N	073 59.79000W
364	Dredge Rock	Rock (red)	USACOE [355-43]	5/29/2006	40 02.32002N	073 59.80002W
365	Dredge Rock	Rock (red)	USACOE [354-42]	5/28/2006	40 02.22000N	073 59.80002W
366	Dredge Rock	Rock (red)	USACOE [353-41]	5/24/2006	40 02.11002N	073 59.80002W
367	Dredge Rock	Rock (red)	USACOE [352-57]	5/22/2006	40 01.02000N	073 59.59002W
368	Dredge Rock	Rock (red)	USACOE [352-57]	5/22/2006	40 01.02000N	073 59.59002W
369	Dredge Rock	Rock (red)	USACOE [356-44]	5/30/2006	40 02.41002N	073 59.80002W
370	Dredge Rock	Rock (red)	USACOE [357-45]	5/31/2006	40 02.52000N	073 59.80002W
371	Dredge Rock	Rock (red)	USACOE [400-42]	7/10/2006	40 02.22000N	073 59.82000W
372	Dredge Rock	Rock (red-brown)	USACOE [399-48]	7/9/2006	40 02.80998N	073 59.80998W
373	Dredge Rock	Rock (red-brown)	USACOE [398-44]	7/6/2006	40 02.41998N	073 59.80002W
374	Dredge Rock	Rock (red-brown)	USACOE [395-45]	7/3/2006	40 02.50998N	073 59.80002W
375	Dredge Rock	Rock (red-brown)	USACOE [394-46]	7/2/2006	40 02.61000N	073 59.79000W
376	Dredge Rock	Rock (red-brown)	USACOE [392-46]	6/29/2006	40 02.61000N	073 59.80002W
377	Dredge Rock	Rock (red-brown)	USACOE [391-47]	6/27/2006	40 02.71998N	073 59.80002W
378	Dredge Rock	Rock (red-brown)	USACOE [390-47]	6/26/2006	40 02.71002N	073 59.80002W
379	Dredge Rock	Rock (red-brown)	USACOE [389-48]	6/25/2006	40 02.80998N	073 59.79000W
380	Dredge Rock	Rock (red-brown)	USACOE [388-48]	6/22/2006	40 02.80998N	073 59.80002W
381	Dredge Rock	Rock (red-brown)	USACOE [386-50]	6/18/2006	40 03.01998N	073 59.80002W
382	Dredge Rock	Rock (red-brown)	USACOE [387-50]	6/19/2006	40 03.01002N	073 59.80002W
383	Dredge Rock	Rock (red-brown)	USACOE [380-48]	6/13/2006	40 02.80998N	073 59.79000W
384	Dredge Rock	Rock (red-brown)	USACOE [379-49]	6/12/2006	40 02.91000N	073 59.80002W
385	Dredge Rock	Rock (red-brown)	USACOE [375-50]	6/10/2006	40 03.00000N	073 59.80002W
386	Mako Mania Reef I	Concrete Pipes & Culverts	Mako Mania Shark Tournament; Ann E. Clarke Foundation; Carbon Services Putkowski	8/1/2006	40 00.39000N	073 59.98998W
387	Mako Mania Reef II	Concrete Pipes & Culverts	Mako Mania Shark Tournament; Ann E. Clarke Foundation	8/1/2006	40 00.42000N	073 59.77998W
388	Mako Mania Reef III	Concrete Pipes & Culverts	Mako Mania Shark Tournament; Ann E. Clarke Foundation	8/1/2006	40 00.40998N	073 59.47998W
389	Mako Mania Reef IV	Concrete Pipes & Culverts	Mako Mania Shark Tournament; Ann E. Clarke Foundation	8/1/2006	40 00.21000N	073 59.79000W
390	Mako Mania Reef V	Concrete Pipes & Culverts	Mako Mania Shark Tournament; Ann E. Clarke Foundation	8/1/2006	40 00.21000N	073 59.41998W

AXEL CARLSON REEF

ID #	Name	Description	Sponsor	Date Deployed	Latitude	Longitude
Mako Mania Shark Tournament; Ann						
391	Mako Mania Reef VI	Concrete Pipes & Culverts	E. Clarke Foundation	8/1/2006	40 00.01998N	073 59.80998W
392	Dredge Rock	Rock (red-brown)	USACOE AKII [428-60]	8/7/2006	40 02.20998N	073 59.59998W
393	Dredge Rock	Rock (red-brown)	USACOE AKII [426-41]	8/6/2006	40 02.11002N	073 59.80998W
394	Dredge Rock	Rock (red-brown)	USACOE AKII [425-60]	8/4/2006	40 02.22000N	073 59.61000W
395	Dredge Rock	Rock (red-brown)	USACOE AKII [424-41]	8/3/2006	40 02.11002N	073 59.80002W
396	Dredge Rock	Rock (red-brown)	USACOE AKII [423-42]	8/2/2006	40 02.23002N	073 59.80998W
397	Dredge Rock	Rock (red-brown)	USACOE AKII [422-42]	8/2/2006	40 02.22000N	073 59.61000W
398	Dredge Rock	Rock (red-brown)	USACOE AKII [420-44]	8/1/2006	40 02.41998N	073 59.79000W
399	Dredge Rock	Rock (red-brown)	USACOE AKII [418-43]	7/31/2006	40 02.29002N	073 59.80002W
400	Dredge Rock	Rock (red-brown)	USACOE AKII [417-45]	7/30/2006	40 02.50998N	073 59.79000W
401	Dredge Rock	Rock (red-brown)	USACOE AKII [416-45]	7/29/2006	40 02.52000N	073 59.80002W
402	Dredge Rock	Rock (red-brown)	USACOE AKII [415-47]	7/28/2006	40 02.71998N	073 59.79000W
403	Dredge Rock	Rock (red-brown)	USACOE AKII [414-47]	7/27/2006	40 02.71002N	073 59.80998W
404	Dredge Rock	Rock (red-brown)	USACOE AKII [413-47]	7/26/2006	40 02.73000N	073 59.80002W
405	Dredge Rock	Rock (red-brown)	USACOE AKII [412-46]	7/25/2006	40 02.62002N	073 59.80002W
406	Dredge Rock	Rock (red-brown)	USACOE AKII [411-47]	7/24/2006	40 02.71998N	073 59.80002W
407	Dredge Rock	Rock (red-brown)	USACOE AKII [410-48]	7/24/2006	40 02.82000N	073 59.80002W
408	Dredge Rock	Rock (red-brown)	USACOE AKII [408-48]	7/22/2006	40 02.80998N	073 59.80002W
409	Dredge Rock	Rock (red-brown)	USACOE AKII [407-47]	7/20/2006	40 02.71002N	073 59.80002W
410	Dredge Rock	Rock (red-brown)	USACOE AKII [406-46]	7/18/2006	40 02.61000N	073 59.80002W
411	Dredge Rock	Rock (red-brown)	USACOE AKII [404-44]	7/15/2006	40 02.41998N	073 59.79000W
Manasquan River Marlin and Tuna Club						
412	MRMTC #8	90' Work Barge - "Coffee Barge "	Club	10/3/2006	40 03.39000N	073 59.08998W
Manasquan River Marlin and Tuna Club						
413	MRMTC #9	178' Tanker Barge - "Clean Water 12"	Club	10/3/2006	40 03.69000N	073 59.17002W
414	Dredge Rock	Rock (red-brown)	USACOE AKII [430-59]	8/8/2006	40 02.11002N	073 59.59998W
415	Dredge Rock	Rock (red-brown)	USACOE AKII [433-59]	8/9/2006	40 02.11998N	073 59.59998W
416	Dredge Rock	Rock (grey)	USACOE AKII [435-60]	8/11/2006	40 02.20998N	073 59.59998W
417	Dredge Rock	Rock (grey)	USACOE AKII [436-60]	8/13/2006	40 02.20998N	073 59.59998W
418	Dredge Rock	Rock (brown)	USACOE AKII [437-59]	8/14/2006	40 02.11002N	073 59.59998W
419	Dredge Rock	Rock (grey)	USACOE AKII [438-63]	8/15/2006	40 01.02000N	073 59.38998W
420	Dredge Rock	Rock (grey)	USACOE AKII [439-63]	8/16/2006	40 01.00998N	073 59.40000W
421	Dredge Rock	Rock (grey)	USACOE AKII [440-63]	8/18/2006	40 01.02000N	073 59.40000W
422	Dredge Rock	Rock (brown)	USACOE AKII [444-63]	8/23/2006	40 01.02000N	073 59.40000W
423	Dredge Rock	Rock (grey)	USACOE AKII [448-64]	8/28/2006	40 02.11998N	073 59.40000W
424	Dredge Rock	Rock (grey)	USACOE AKII [450-64]	8/31/2006	40 02.11002N	073 59.40000W
425	Dredge Rock	Rock (red-brown)	USACOE AKII [454-64]	9/6/2006	40 02.11002N	073 59.40000W
426	Dredge Rock	Rock (red-brown)	USACOE AKII [455-64]	9/8/2006	40 02.11002N	073 59.40000W
427	Dredge Rock	Rock (red)	USACOE AKII [456-65]	9/9/2006	40 02.22000N	073 59.40000W
428	Dredge Rock	Rock (red)	USACOE AKII [457-65]	9/10/2006	40 02.20998N	073 59.32998W

AXEL CARLSON REEF

ID #	Name	Description	Sponsor	Date Deployed	Latitude	Longitude
429	Dredge Rock	Rock (red)	USACOE AKII [458-65]	9/13/2006	40 02.22000N	073 59.40000W
430	Dredge Rock	Rock (red)	USACOE AKII [459-65]	9/13/2006	40 02.22000N	073 59.40000W
431	Dredge Rock	Rock (red)	USACOE AKII [460-66]	9/14/2006	40 02.32002N	073 59.40000W
432	Dredge Rock	Rock (red)	USACOE AKII [461-66]	9/16/2006	40 02.32002N	073 59.40000W
433	Dredge Rock	Rock (red)	USACOE AKII [462-66]	9/18/2006	40 02.31000N	073 59.41002W
434	Dredge Rock	Rock (grey)	USACOE AKII [467-67]	9/21/2006	40 02.61000N	073 59.19000W
435	Dredge Rock	Rock (red)	USACOE AKII [476-67]	9/29/2006	40 02.61000N	073 59.20002W
Greater Point Pleasant Charter Boat Association						
436	Angelo's Reef	63' Commercial Trawler - "Hail Mary II"	Association	11/4/2006	40 02.62998N	073 59.20998W
437	Dredge Rock	Rock	USACOE AKII [480-67]	11/24/2006	40 02.61000N	073 59.20002W
438	Concrete Rubble	Concrete rubble	Weeks Marine Co.	2/22/2007	40 00.10002N	073 59.70000W
Manasquan River Marlin and Tuna Club						
439	MRMTC #10	74' Commercial Trawler - "Caterina D"	Club	4/29/2007	40 01.65000N	073 59.74998W
440	Concrete Rubble	Concrete rubble (x11 units)	U.S. Coast Guard	12/21/2006	39 59.94000N	073 59.47998W
441	Concrete Rubble	Concrete rubble (x10 units)	U.S. Coast Guard	2/3/2007	39 59.97000N	073 59.41002W
442	Concrete Rubble	Concrete rubble (x4 units)	U.S. Coast Guard	5/15/2007	39 59.98002N	073 59.41998W
443	Concrete Rubble	Concrete rubble (x7 units)	U.S. Coast Guard	9/17/2007	40 00.00000N	073 59.50002W
444	Dredge Rock	Rock	USACOE [1-23] "A"	11/20/2007	40 02.74998N	073 59.71998W
445	Dredge Rock	Rock	USACOE [2-24] "A"	11/21/2007	40 02.68002N	073 59.70000W
446	Dredge Rock	Rock	USACOE [3-28] "A"	11/24/2007	40 02.74998N	073 59.68002W
447	Dredge Rock	Rock	USACOE [4-30] "A"	11/24/2007	40 02.71998N	073 59.71998W
448	Dredge Rock	Rock	USACOE [6-32] "A"	11/25/2007	40 02.71002N	073 59.68998W
449	Dredge Rock	Rock	USACOE [8-34] "A"	11/26/2007	40 02.68002N	073 59.70000W
450	Dredge Rock	Rock	USACOE [9-36] "A"	11/27/2007	40 02.68002N	073 59.67000W
451	Dredge Rock	Rock	USACOE [11-45] "B"	12/3/2007	40 02.35002N	073 59.61000W
452	Dredge Rock	Rock	USACOE [12-47] "B"	12/4/2007	40 02.35002N	073 59.58000W
453	Concrete Blocks	Concrete blocks	Weeks Marine Co.	2/8/2008	40 01.39998N	073 59.68002W
454	Gus Grafas Memorial Reef	Deck (Sonata) Barge (100'x30'x7')	Larry Grafus and Mike Sonta	5/29/2008	40 02.97000N	073 59.37000W
455	Bouy Sinker	CGC Juniper Sinkers (WLB201)	U.S. Coast Guard (LT Jeannette Killen)	6/11/2008	40 00.30000N	073 59.70000W
456	Bouy Sinker	CGC Juniper Sinkers (WLB201)	U.S. Coast Guard	6/11/2008	40 00.30000N	073 59.70000W
457	Bouy Sinker	CGC Juniper Sinkers (WLB201)	U.S. Coast Guard	6/11/2008	40 00.30000N	073 59.70000W
458	Bouy Sinker	CGC Juniper Sinkers (WLB201)	U.S. Coast Guard	6/11/2008	40 00.30000N	073 59.70000W
459	Bouy Sinker	CGC Juniper Sinkers (WLB201)	U.S. Coast Guard	6/11/2008	40 00.31002N	073 59.70000W
460	Bouy Sinker	CGC Juniper Sinkers (WLB201)	U.S. Coast Guard	6/11/2008	40 00.31002N	073 59.70000W
461	Bouy Sinker	CGC Juniper Sinkers (WLB201)	U.S. Coast Guard	6/11/2008	40 00.31002N	073 59.70000W
462	Bouy Sinker	CGC Juniper Sinkers (WLB201)	U.S. Coast Guard	6/11/2008	40 00.31002N	073 59.70000W
463	Bouy Sinker	CGC Juniper Sinkers (WLB201)	U.S. Coast Guard	6/11/2008	40 00.31002N	073 59.70000W
464	Bouy Sinker	CGC Juniper Sinkers (WLB201)	U.S. Coast Guard	6/11/2008	40 00.31002N	073 59.70000W
465	Bouy Sinker	CGC Juniper Sinkers (WLB201)	U.S. Coast Guard	6/11/2008	40 00.31998N	073 59.70000W
466	Bouy Sinker	CGC Juniper Sinkers (WLB201)	U.S. Coast Guard	6/11/2008	40 00.31998N	073 59.70000W
467	Bouy Sinker	CGC Juniper Sinkers (WLB201)	U.S. Coast Guard	6/11/2008	40 00.31998N	073 59.70000W

AXEL CARLSON REEF

ID #	Name	Description	Sponsor	Date	Latitude	Longitude
				Deployed		
468	Bouy Sinker	CGC Juniper Sinkers (WLB201)	U.S. Coast Guard	6/11/2008	40 00.31998N	073 59.70000W
469	Bouy Sinker	CGC Juniper Sinkers (WLB201)	U.S. Coast Guard	6/11/2008	40 00.31998N	073 59.70000W
470	Rock Habitat	Rock Habitat (experiment)	USACOE Cell #11	10/24/2008	40 01.80000N	074 00.19998W
471	Rock Habitat	Rock Habitat (experiment)	USACOE Cell #13	11/3/2008	40 01.99998N	074 00.19998W
472	Dredge Rock	Rock	USACOE Cell #19 [214-76]	4/8/2009	40 02.35998N	073 59.52000W
473	Dredge Rock	Rock	USACOE [195-29] (State ID #76)	8/7/2008	40 02.25000N	073 59.29998W
474	Dredge Rock	Rock	USACOE [196-33] (State ID #77)	8/8/2008	40 02.23002N	073 59.28000W
475	Dredge Rock	Rock	USACOE [199-2] (State ID #74)	8/12/2008	40 02.74998N	073 59.70000W
476	Dredge Rock	Rock	USACOE [200-11] (State ID #75)	8/13/2008	40 02.35002N	073 59.59998W
477	Dredge Rock	Rock	USACOE [201-1] (State ID #74)	8/14/2008	40 02.74998N	073 59.71998W
478	Dredge Rock	Rock	USACOE [202-26] (State ID #76)	8/15/2008	40 02.29002N	073 59.50002W
479	Dredge Rock	Rock	USACOE [203-10] (State ID #75)	8/16/2008	40 02.35002N	073 59.62002W
480	Concrete Rubble	Concrete rubble - (x7 units)	U.S. Coast Guard Sinkers	5/2/2009	40 00.37998N	073 59.38002W
481	Dredge Rock	Rock	USACOE [237-5] (State ID #25)	6/24/2009	40 02.83002N	074 00.01002W
482	Dredge Rock	Rock	USACOE [238-5] (State ID #25)	6/25/2009	40 02.82000N	073 59.98002W
483	Dredge Rock	Rock	USACOE [239-5] (State ID #25)	6/25/2009	40 02.82000N	073 59.98998W
484	Dredge Rock	Rock	USACOE [240-5] (State ID #25)	6/26/2009	40 02.82000N	073 59.98998W
485	Dredge Rock	Rock	USACOE [241-4] (State ID #24)	6/27/2009	40 02.73000N	074 00.01002W
486	Dredge Rock	Rock	USACOE [242-4] (State ID #24)	6/28/2009	40 02.73000N	073 59.98998W
487	Ward's Wreck Reef	68' Trawler - "Mc Ginty"	N/A	5/7/2010	40 03.49002N	073 59.34000W
490.1	Deck Barge	Deck Barge (50'x25'x4')	Chris Waicik; Steppenowski Ann E. Clarke Foundation -	8/30/2012	40 01.69998N	073 59.29998W
490.2	Horseshoe Crab Sculpture	Horseshoe Crab Sculpture	Reefmakers	8/30/2012	40 01.69998N	073 59.29998W
491	Concrete Rubble	Concrete Slabs	Reicon Corp.; Sea Wall	6/25/2015	40 01.30002N	073 59.80002W
492	Concrete Rubble	Concrete Slabs	Reicon Corp.; Sea Wall	7/21/2015	40 00.90000N	073 59.80002W
493	Reef	53' Crew Boat - "NY Harbor Charlie"	E. Clark Foundation	8/9/2016	40 03.79002N	073 59.38002W
494	John Grady III "Shady Reef"	68 Foot Fishing Trawler - "Austin"	Geater Point Pleasant Charter Boat Association; Ocean Reef Foundation (ORF)	9/21/2016	40 02.89998N	073 59.08002W