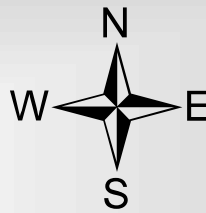
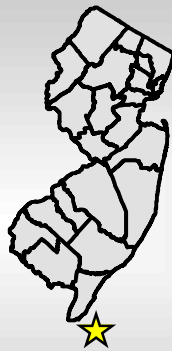


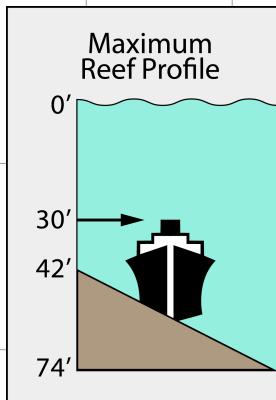
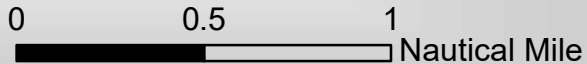
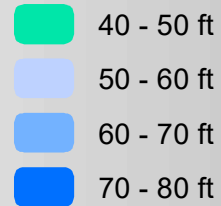
Cape May Reef (Map 1 of 3)

Distance offshore --- 8.5 nm
 Reef area ----- 5.4 sq mi
 Depth range ----- 42-74 ft

**NOT FOR
 NAVIGATIONAL
 PURPOSES.**

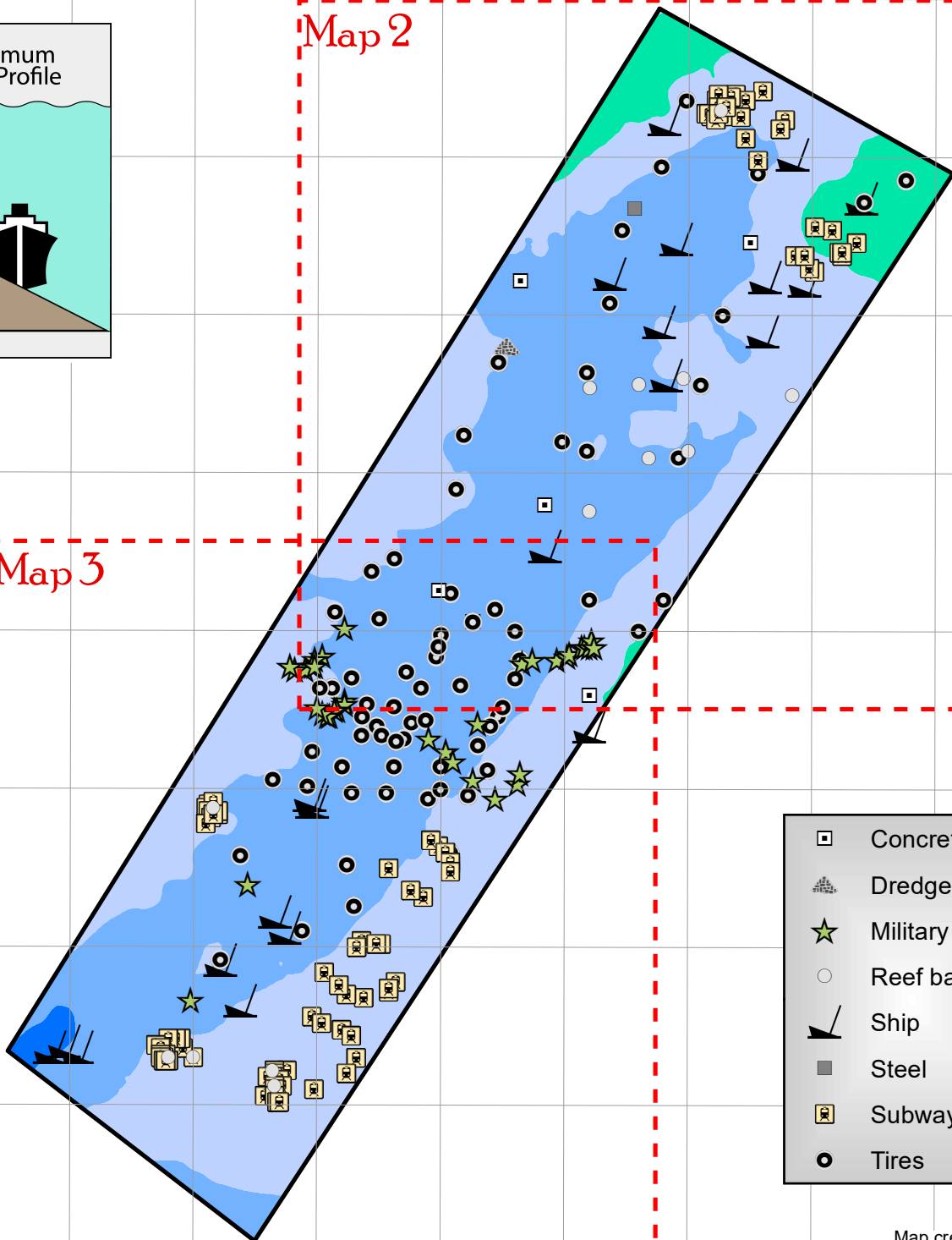


Depth



Map 2

Map 3



- Concrete
- ⊞ Dredge rock
- ★ Military vehicle
- Reef ball
- ⚓ Ship
- Steel
- 🚗 Subway car
- Tires

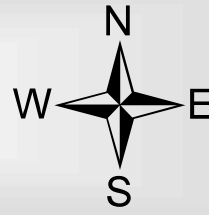
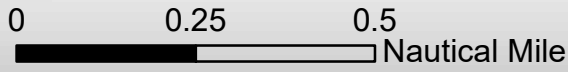
Map created: August 2021

-74°43.5' -74°43' -74°42.5' -74°42' -74°41.5' -74°41' -74°40.5' -74°40' -74°39.5' -74°39'

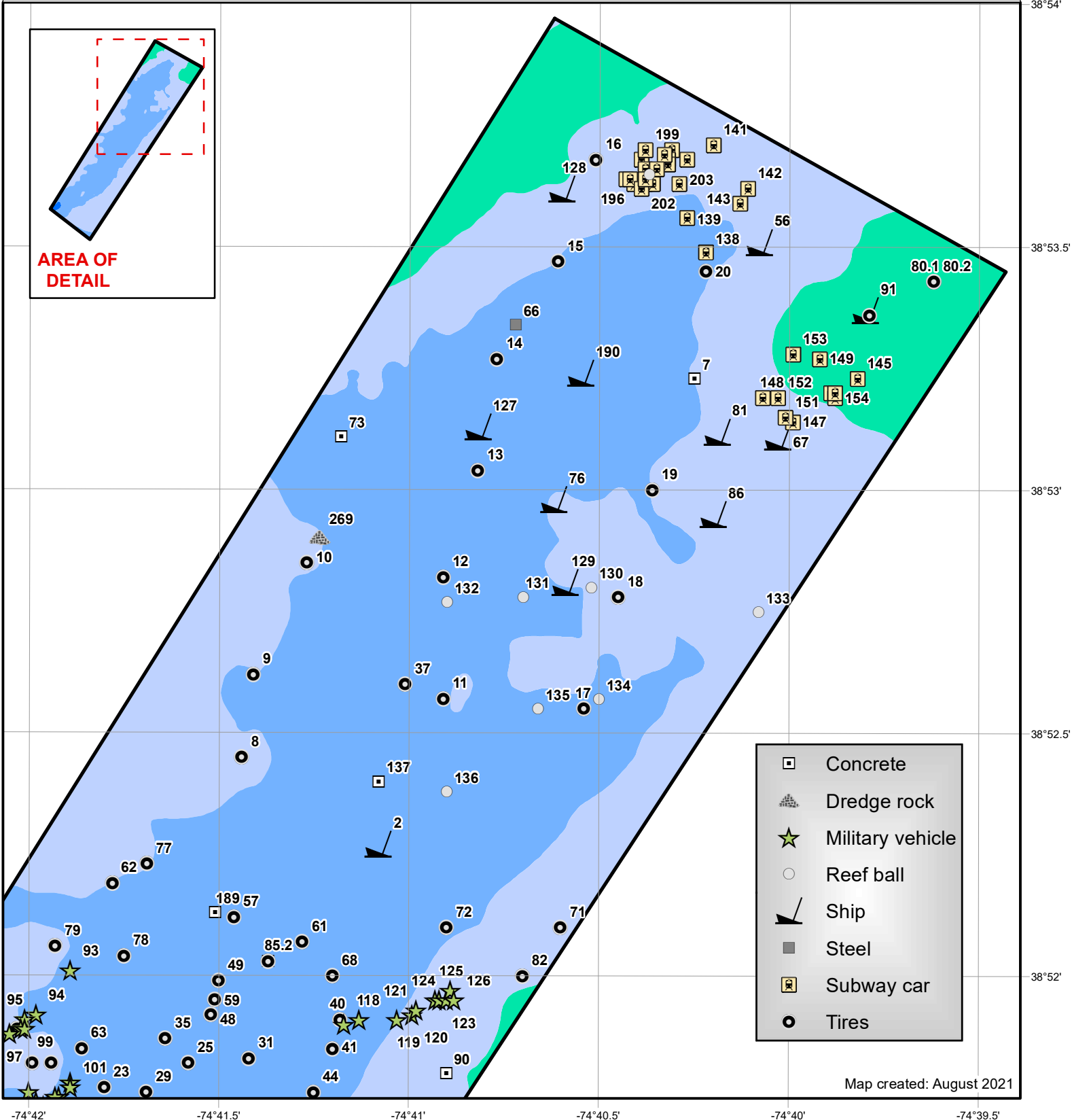
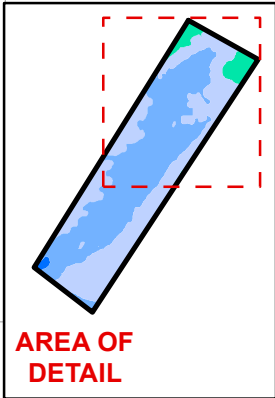
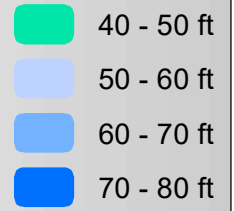
38°54'
 38°53.5'
 38°53'
 38°52.5'
 38°52'
 38°51.5'
 38°51'
 38°50.5'

Cape May Reef (Map 2 of 3)

**NOT FOR
NAVIGATIONAL
PURPOSES.**



Depth

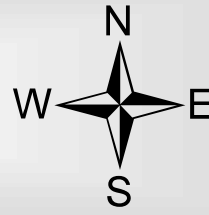


Map created: August 2021

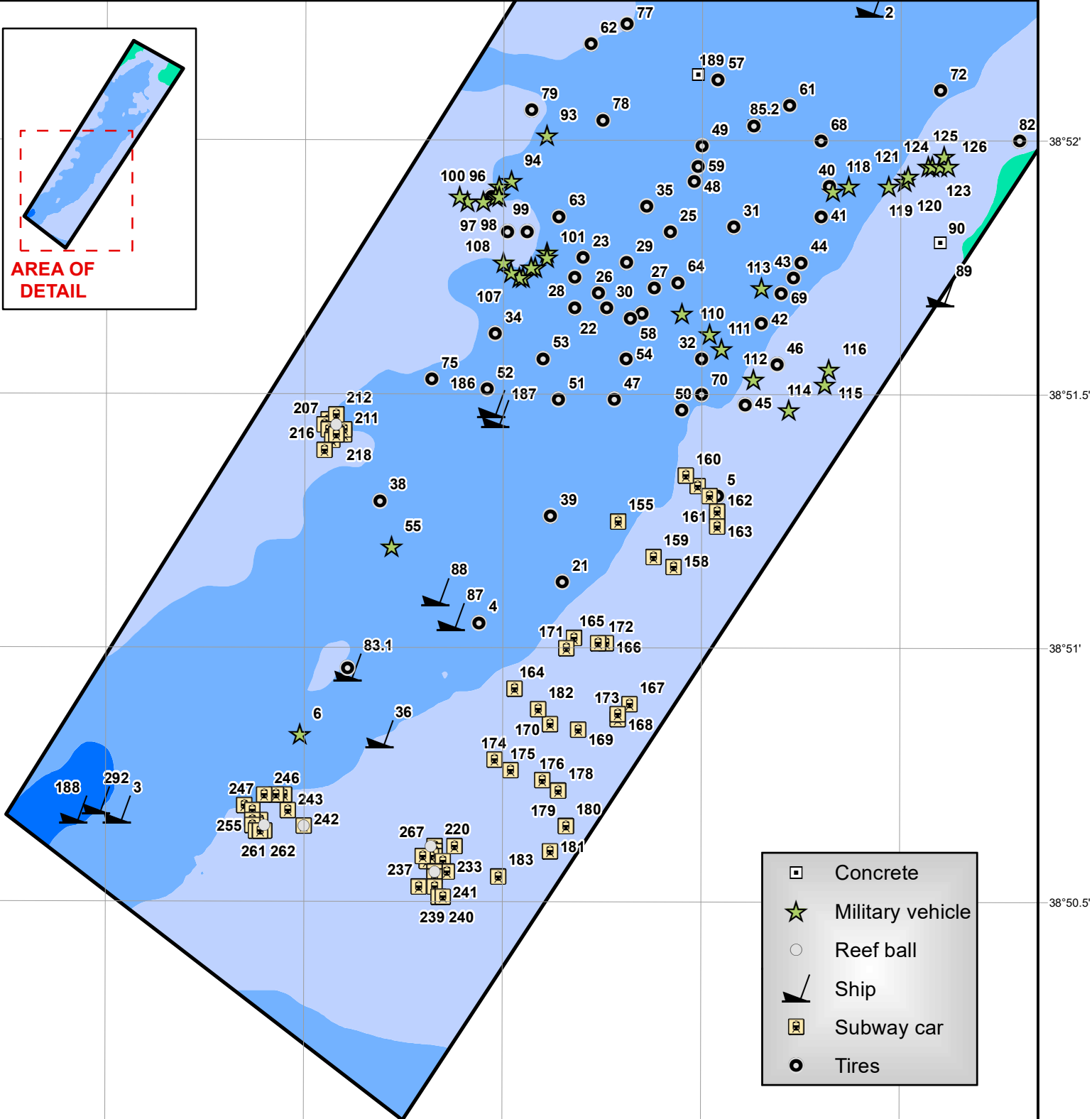
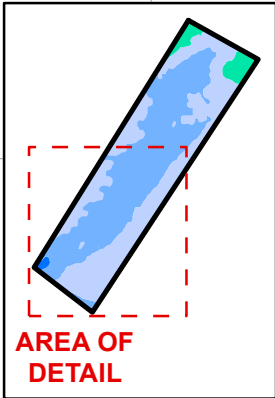
Cape May Reef (Map 3 of 3)

**NOT FOR
NAVIGATIONAL
PURPOSES.**

0 0.25 0.5
Nautical Mile



Depth



- Concrete
- Military vehicle
- Reef ball
- Ship
- Subway car
- Tires

Map created: August 2021

-74°43'

-74°42.5'

-74°42'

-74°41.5'

-74°41'

CAPE MAY REEF

ID #	Name	Description	Sponsor	Date Deployed	Latitude	Longitude
2	Barge	Barge (broken up)	N/A		38 52.27002N	074 41.08002W
3	Laita	106' Clam Dredge - "Laita"	Eirek's Dock; The Fisherman Magazine	10/16/1986	38 50.68002N	074 42.97002W
4	Tire Units	48-tire units	Cape May Municipal Utilities Authority (MUA); Southern State Correctional Facility	6/18/1987	38 51.04998N	074 42.06000W
5	Tire Units	54-tire units	Cape May Municipal Utilities Authority (MUA), Southern State Correctional Facility	6/22/1987	38 51.30000N	074 41.46000W
6	Peggy Diana	Landing Craft Mechanized (LCM-6) - 56' "Peggy Diana"	949th U.S. Army Transportation Corps	11/14/1987	38 50.83002N	074 42.51000W
7	Ben Franklin Bridge slabs	Bridge slabs (x4700)	Delaware River Port Authority	7/1/1988	38 53.23002N	074 40.24998W
8	Tire Units	105-tire units	Cape May Municipal Utilities Authority (MUA); Southern State Correctional Facility	7/29/1988	38 52.45002N	074 41.44002W
9	Tire Units	110-tire units	Cape May MUA; Southern State Correctional Facility	8/2/1988	38 52.62000N	074 41.41002W
10	Tire Units	104-tire units	Cape May MUA; Southern State Correctional Facility	8/4/1988	38 52.84998N	074 41.26998W
11	Tire Units	105-tire units	Cape May MUA; Southern State Correctional Facility	8/10/1988	38 52.57002N	074 40.90998W
12	Tire Units	100-tire units	Cape May MUA; Southern State Correctional Facility	8/16/1988	38 52.81998N	074 40.90998W
13	Tire Units	110-tire units	Cape May MUA; Southern State Correctional Facility	8/17/1988	38 53.04000N	074 40.81998W
14	Tire Units	100-tire units	Cape May MUA; Southern State Correctional Facility	8/18/1988	38 53.26998N	074 40.77000W
15	Tire Units	100-tire units	Cape May MUA; Southern State Correctional Facility	8/23/1988	38 53.47002N	074 40.60998W
16	Tire Units	100-tire units	Cape May MUA; Southern State Correctional Facility	8/25/1988	38 53.68002N	074 40.51002W
17	Tire Units	100-tire units	Cape May MUA; Southern State Correctional Facility	8/26/1988	38 52.54998N	074 40.54002W
18	Tire Units	100-tire units	Cape May MUA; Southern State Correctional Facility	8/30/1988	38 52.78002N	074 40.45002W
19	Tire Units	165-tire units	Cape May MUA; Southern State Correctional Facility	8/31/1988	38 52.99998N	074 40.36002W
20	Tire Units	100-tire units	Cape May MUA; Southern State Correctional Facility	9/2/1988	38 53.44998N	074 40.21998W
21	Tire Units	100-tire units	Cape May MUA; Southern State Correctional Facility	9/5/1988	38 51.13002N	074 41.85000W

CAPE MAY REEF

ID #	Name	Description	Sponsor	Date Deployed	Latitude	Longitude
22	Tire Units	90-tire units	Cape May MUA; Southern State Correctional Facility	9/6/1988	38 51.67002N	074 41.82000W
23	Tire Units	100-tire units	Cape May MUA; Southern State Correctional Facility	9/7/1988	38 51.76998N	074 41.80002W
24	Tire Units	105-tire units	Cape May MUA; Southern State Correctional Facility	9/9/1988	38 51.66000N	074 41.65002W
25	Tire Units	107-tire units	Cape May MUA; Southern State Correctional Facility	9/13/1988	38 51.82002N	074 41.58000W
26	Tire Units	100-tire units	Cape May MUA; Southern State Correctional Facility	9/14/1988	38 51.70002N	074 41.76000W
27	Tire Units	100-tire units	Cape May MUA; Southern State Correctional Facility	9/15/1988	38 51.70998N	074 41.62002W
28	Tire Units	90-tire units	Cape May MUA; Southern State Correctional Facility	9/16/1988	38 51.73002N	074 41.82000W
29	Tire Units	99-tire units	Cape May MUA; Southern State Correctional Facility	10/12/1988	38 51.76002N	074 41.68998W
30	Tire Units	110-tire units	Cape May MUA; Southern State Correctional Facility	10/13/1988	38 51.67002N	074 41.74002W
31	Tire Units	100-tire units	Cape May MUA; Southern State Correctional Facility	10/14/1988	38 51.82998N	074 41.41998W
32	Tire Units	100-tire units	Cape May MUA; Southern State Correctional Facility	10/18/1988	38 51.57000N	074 41.50002W
33	Tire Units	100-tire units	Cape May MUA; Southern State Correctional Facility	10/20/1988	38 51.82002N	074 41.94000W
34	Tire Units	115-tire units	Cape May MUA; Southern State Correctional Facility	11/3/1988	38 51.61998N	074 42.01998W
35	Tire Units	100-tire units	Cape May MUA; Southern State Correctional Facility	11/4/1988	38 51.87000N	074 41.64000W
36	WINTHROP	120' Trawler - "Winthrop"	Eirek's Dock; Fish America Foundation	7/12/1989	38 50.83002N	074 42.31002W
37	Tire Units	550-tire units	Cape May MUA; Southern State Correctional Facility	7/13/1989	38 52.60002N	074 41.01000W
38	Tire Units	424-tire units	Cape May MUA; Southern State Correctional Facility	7/21/1989	38 51.28998N	074 42.31002W
39	Tire Units	574-tire units	Cape May MUA; Southern State Correctional Facility	8/30/1989	38 51.25998N	074 41.88000W
40	Tire Units	105-tire units	Cape May MUA; Southern State Correctional Facility	9/1/1989	38 51.91002N	074 41.17998W
41	Tire Units	102-tire units	Cape May MUA; Southern State Correctional Facility	9/2/1989	38 51.85002N	074 41.20002W
42	Tire Units	105-tire units	Cape May MUA; Southern State Correctional Facility	9/30/1989	38 51.64002N	074 41.35002W

CAPE MAY REEF

ID #	Name	Description	Sponsor	Date Deployed	Latitude	Longitude
43	Tire Units	102-tire units	Cape May MUA; Southern State Correctional Facility	9/29/1989	38 51.73002N	074 41.26998W
44	Tire Units	115-tire units	Cape May MUA; Southern State Correctional Facility	9/29/1989	38 51.76002N	074 41.25000W
45	Tire Units	105-tire units	Cape May MUA; Southern State Correctional Facility	11/3/1989	38 51.48000N	074 41.38998W
46	Tire Units	106-tire units	Cape May MUA; Southern State Correctional Facility	11/4/1989	38 51.55998N	074 41.31000W
47	Tire Units	100-tire units	Cape May MUA; Southern State Correctional Facility	12/11/1989	38 51.49002N	074 41.71998W
48	Tire Units	100-tire units	Cape May MUA; Southern State Correctional Facility	12/18/1989	38 51.91998N	074 41.52000W
49	Tire Units	110-tire units	Cape May MUA; Southern State Correctional Facility	12/18/1989	38 51.99000N	074 41.50002W
50	Tire Units	100-tire units	Cape May MUA; Southern State Correctional Facility	12/19/1989	38 51.46998N	074 41.55000W
51	Tire Units	105-tire units	Cape May MUA; Southern State Correctional Facility	12/27/1989	38 51.49002N	074 41.86002W
52	Tire Units	107-tire units	Cape May MUA; Southern State Correctional Facility	12/27/1989	38 51.51000N	074 42.04002W
53	Tire Units	90-tire units	Cape May MUA; Southern State Correctional Facility	12/29/1989	38 51.57000N	074 41.89998W
54	Tire Units	105-tire units	Cape May MUA; Southern State Correctional Facility	12/29/1989	38 51.57000N	074 41.68998W
55	Captian Henry	Landing Craft Mechanized (LCM-6) - 56' "Capt. Henry"	Bureau of Coastal Engineering; Cape May County Party & Charter Boat Assoc.; Fish America Foundation	5/6/1990	38 51.19998N	074 42.28002W
56	Lisa Michelle	110' Deck Barge - "Lisa Michelle"	McNeil's Marina; Fish America Foundation; Cape May County Party & Charter Boat Assoc.	8/8/1990	38 53.50998N	074 40.08000W
57	Tire Units	500-tire units	Cape May MUA; Southern State Correctional Facility	9/25/1990	38 52.12002N	074 41.46000W
58	Tire Units	600-tire units	Cape May MUA; Southern State Correctional Facility	9/28/1990	38 51.64998N	074 41.68002W
59	Tire Units	500-tire units	Cape May MUA; Southern State Correctional Facility	10/15/1990	38 51.94998N	074 41.50998W
60	Tire Units	500-tire units	Cape May MUA; Southern State Correctional Facility	10/17/1990	38 51.82002N	074 41.98998W
61	Tire Units	400-tire units	Cape May MUA; Southern State Correctional Facility	10/30/1990	38 52.06998N	074 41.28000W

CAPE MAY REEF

ID #	Name	Description	Sponsor	Date Deployed	Latitude	Longitude
62	Tire Units	450-tire units	Cape May MUA; Southern State Correctional Facility	11/1/1990	38 52.18998N	074 41.77998W
63	Tire Units	500-tire units	Cape May MUA; Southern State Correctional Facility	11/3/1990	38 51.85002N	074 41.86002W
64	Tire Units	450-tire units	Cape May MUA; Southern State Correctional Facility	12/7/1990	38 51.72000N	074 41.56002W
66	Steel and Concrete Rubble	steel & concrete rubble	BP Oil Co.; Delaware Bay Sea Tow; Sportfish Fund	6/30/1991	38 53.34000N	074 40.72002W
67	Becky Lee	85' Clam Dredge - "Becky Lee"	Atlantic Cape Fisheries, Inc.; Cape May County Party & Charter Boat Assoc.	7/25/1991	38 53.11002N	074 40.03002W
68	Tire Units	360-tire units	Cape May MUA; Southern State Correctional Facility	8/28/1991	38 52.00002N	074 41.20002W
69	Tire Units	400-tire units	Cape May MUA; Southern State Correctional Facility	9/6/1991	38 51.70002N	074 41.29998W
70	Tire units	439-tire units	Cape May MUA; Southern State Correctional Facility	9/12/1991	38 51.49998N	074 41.50002W
71	Tire Units	450-tire units	Cape May MUA; Southern State Correctional Facility	9/29/1991	38 52.09998N	074 40.60002W
72	Tire Units	450-tire units	Cape May MUA; Southern State Correctional Facility	10/9/1991	38 52.09998N	074 40.90002W
73	Bridge Rubble	Route 47 bridge pieces	Agate Construction Co.	10/11/1991	38 53.11002N	074 41.17998W
74	Tire Units	400-tire units	Cape May MUA; Southern State Correctional Facility	10/19/1991	38 51.88998N	074 42.03000W
75	Tire Units	325-tire units	Cape May MUA; Southern State Correctional Facility	11/3/1991	38 51.52998N	074 42.18000W
76	WYOMING	100' Clam Dredge - "Wyoming"	Wyoming Boat Corp.; Cape May County Party & Charter Boat Assoc.; Fish America Foundation	12/7/1991	38 52.98000N	074 40.62000W
77	Tire Units	582-tire units	Cape May MUA; Southern State Correctional Facility	6/13/1992	38 52.23000N	074 41.68998W
78	Tire Units	528-tire units	Cape May MUA; Southern State Correctional Facility	6/22/1992	38 52.03998N	074 41.74998W
79	Tire Units	617-tire units	Cape May MUA; Southern State Correctional Facility	7/5/1992	38 52.06002N	074 41.92998W
80.1	Tire Units	755-tire units (steel)	BP Oil Co.; Reef Environments, Inc.	7/15/1992	38 53.43000N	074 39.61998W
80.2	Tire Units	755-tire units (steel)	BP Oil Co.; Reef Environments, Inc.	7/15/1992	38 53.43000N	074 39.61998W
81	Sea Transporter	135' Commercial Fishing Vessel - "Sea Transporter"	Atlantic Cape Fisheries, Inc.; Cape May County Party & Charter Boat Assoc.; Artificial Reef Assoc.	8/21/1992	38 53.11998N	074 40.18998W
82	Tire Units	527-tire units	Cape May MUA; Southern State Correctional Facility	10/7/1992	38 52.00002N	074 40.69998W

CAPE MAY REEF

ID #	Name	Description	Sponsor	Date Deployed	Latitude	Longitude
83.1	Salt Barge	150' Deck Barge - "Salt Barge"	U.S. Navy; Cape May County Party & Charter Boat Assoc.; NJ Dive Council; Carbon Service Corp.; Artificial Reef Assoc.	4/9/1993	38 50.95998N	074 42.39000W
83.2	Tire Units	228-tire units	U.S. Navy; Cape May County Party & Charter Boat Assoc.; NJ Dive Council; Carbon Service Corp.; Artificial Reef Assoc.	4/9/1993	38 50.95998N	074 42.39000W
85.1	Concrete Rubble	Concrete rubble	Weeks Marine Co.; Philadelphia Naval Shipyard; Carbon Service Corp.	7/24/1993	38 52.03002N	074 41.37000W
85.2	Tire Units	258-tire units	Weeks Marine Co.; Philadelphia Naval Shipyard; Carbon Service Corp.	7/24/1993	38 52.03002N	074 41.37000W
86	Celia Brown	85' Tugboat - "Celia Brown"	Sportfish Fund; Artificial Reef Assoc.; Cape May County Party & Charter Boat Assoc.	8/16/1993	38 52.95000N	074 40.20000W
87	CAPE STRAIT	95' Coast Guard Cutter - "Cape Strait"	U.S. Coast Guard; NJ State Police	9/9/1993	38 51.06000N	074 42.13002W
88	Johnny Buoy	46' Bouy Tender - "Johnny Bouy"	U.S. Coast Guard; NJ State Police	9/9/1993	38 51.10998N	074 42.16998W
89	Georgia	35' Sport Boat - "Georgia"	Elmer Dowd; Sportfish Fund	10/23/1993	38 51.70002N	074 40.90002W
90	Concrete Rubble	Concrete rubble	Weeks Marine Co.	11/3/1993	38 51.79998N	074 40.90002W
91	Rothenbach Reef I	165' Navy Barge YON-97 - "Rothenbach I"	Rothenbach Family; Cape May County Party & Charter Boat Assoc.	6/11/1997	38 53.37000N	074 39.79998W
92	Tire Units	97-tire units	Carbon Service Corp.	6/11/1997	38 53.35998N	074 39.79002W
93	Military Vehicle	M-113 Armored Personnel Carrier (APC)	NJ Army National Guard	9/9/1998	38 52.00998N	074 41.89002W
94	Military Vehicle	M-113 Armored Personnel Carrier (APC)	NJ Army National Guard	9/9/1998	38 51.91998N	074 41.98002W
95	Military Vehicle	M-113 Armored Personnel Carrier (APC)	NJ Army National Guard	9/9/1998	38 51.91002N	074 42.01002W
96	Gregory B. Schuda Memorial Reef	M-113 Armored Personnel Carrier (APC)	NJ Army National Guard; Family & Friends	9/9/1998	38 51.88998N	074 42.01998W
97	Military Vehicle	M-113 Armored Personnel Carrier (APC)	NJ Army National Guard	9/9/1998	38 51.88002N	074 42.04998W
98	Military Vehicle	M-113 Armored Personnel Carrier (APC)	NJ Army National Guard	9/9/1998	38 51.88002N	074 42.09000W
99	Roy C. Titus Memorial Reef	M-113 Armored Personnel Carrier (APC)	NJ Army National Guard; Family & Friends	9/9/1998	38 51.88998N	074 42.01002W
100	Roy C. Titus Memorial Reef	M-113 Armored Personnel Carrier (APC)	NJ Army National Guard; Family & Friends	9/9/1998	38 51.88998N	074 42.10998W
101	Military Vehicle	M-113 Armored Personnel Carrier (APC)	NJ Army National Guard	9/9/1998	38 51.78000N	074 41.89002W
102	Military Vehicle	M-113 Armored Personnel Carrier (APC)	NJ Army National Guard	9/9/1998	38 51.76998N	074 41.89002W
103	Military Vehicle	M-113 Armored Personnel Carrier (APC)	NJ Army National Guard	9/9/1998	38 51.75000N	074 41.92002W
104	Military Vehicle	M-113 Armored Personnel Carrier (APC)	NJ Army National Guard	9/9/1998	38 51.75000N	074 41.92998W
105	Military Vehicle	M-113 Armored Personnel Carrier (APC)	NJ Army National Guard	9/9/1998	38 51.73002N	074 41.95002W
106	Military Vehicle	M-113 Armored Personnel Carrier (APC)	NJ Army National Guard	9/9/1998	38 51.73002N	074 41.95998W
107	Military Vehicle	M-113 Armored Personnel Carrier (APC)	NJ Army National Guard	9/9/1998	38 51.73998N	074 41.98002W
108	Military Vehicle	M-113 Armored Personnel Carrier (APC)	NJ Army National Guard	9/9/1998	38 51.76002N	074 42.00000W

CAPE MAY REEF

ID #	Name	Description	Sponsor	Date	Latitude	Longitude
				Deployed		
109	Military Vehicle	M-113 Armored Personnel Carrier (APC)	NJ Army National Guard	9/9/1998	38 51.66000N	074 41.55000W
110	Military Vehicle	M-113 Armored Personnel Carrier (APC)	NJ Army National Guard	9/9/1998	38 51.61998N	074 41.47998W
111	Military Vehicle	M-113 Armored Personnel Carrier (APC)	NJ Army National Guard	9/9/1998	38 51.58998N	074 41.44998W
112	Military Vehicle	M-113 Armored Personnel Carrier (APC)	NJ Army National Guard	9/9/1998	38 51.52998N	074 41.37000W
113	Military Vehicle	M-113 Armored Personnel Carrier (APC)	NJ Army National Guard	9/9/1998	38 51.70998N	074 41.35002W
114	Military Vehicle	M-113 Armored Personnel Carrier (APC)	NJ Army National Guard	9/9/1998	38 51.46998N	074 41.28000W
115	Military Vehicle	M-113 Armored Personnel Carrier (APC)	NJ Army National Guard	9/9/1998	38 51.52002N	074 41.19000W
116	Military Vehicle	M-113 Armored Personnel Carrier (APC)	NJ Army National Guard	9/9/1998	38 51.55002N	074 41.17998W
117	Military Vehicle	M-113 Armored Personnel Carrier (APC)	NJ Army National Guard	9/9/1998	38 51.90000N	074 41.17002W
118	Military Vehicle	M-113 Armored Personnel Carrier (APC)	NJ Army National Guard	9/9/1998	38 51.91002N	074 41.13000W
119	Military Vehicle	M-113 Armored Personnel Carrier (APC)	NJ Army National Guard	9/9/1998	38 51.91002N	074 41.02998W
120	Military Vehicle	M-113 Armored Personnel Carrier (APC)	NJ Army National Guard	9/9/1998	38 51.91998N	074 40.99002W
121	Military Vehicle	M-113 Armored Personnel Carrier (APC)	NJ Army National Guard	9/9/1998	38 51.93000N	074 40.98000W
122	Military Vehicle	M-113 Armored Personnel Carrier (APC)	NJ Army National Guard	9/9/1998	38 51.94998N	074 40.93002W
123	Military Vehicle	M-113 Armored Personnel Carrier (APC)	NJ Army National Guard	9/9/1998	38 51.94998N	074 40.92000W
123	Subway Car	Subway Car (55'x9'x11')	New York City Transit Authority	8/25/2008	38 51.45000N	074 42.43002W
124	Military Vehicle	M-113 Armored Personnel Carrier (APC)	NJ Army National Guard	9/9/1998	38 51.94998N	074 40.90002W
125	Military Vehicle	M-113 Armored Personnel Carrier (APC)	NJ Army National Guard	9/9/1998	38 51.97002N	074 40.89000W
126	Military Vehicle	M-113 Armored Personnel Carrier (APC)	NJ Army National Guard	9/9/1998	38 51.94998N	074 40.87998W
127	Red Oak	157' Coast Guard Bouy Tender - "Red Oak"	U.S. Coast Guard; South Jersey Fishing Center	9/13/1999	38 53.13000N	074 40.81998W
128	Point Swift	83' Coast Guard Cutter - "Point Swift"	Cape May County Party & Charter Boat Assoc.	3/30/2000	38 53.62002N	074 40.60002W
129	Dr. Tom's Reef	120' Coast Guard Cutter - "Heritage Hull"	Natoli Family	9/20/2001	38 52.81002N	074 40.59000W
130	Dr. Tom's Reef	50 Reef Balls	Family & Friends	12/18/2002	38 52.80000N	074 40.51998W
131	Archie Faulkner Sr. Memorial Reef	50 Reef Balls	Pauline Faulkner and Family	12/18/2002	38 52.78002N	074 40.69998W
132	Prowler Reef	50 Reef Balls	Nontas Kontes	12/18/2002	38 52.77000N	074 40.90002W
133	John "Wild Bill" Beatty Reef	50 Reef Balls	Robert Beatty; Family & Friends	12/18/2002	38 52.75002N	074 40.08000W
134	Lorraine Messner Reef	50 Reef Balls	James Messner Jr.	12/18/2002	38 52.57002N	074 40.50000W
135	Capt. James Albright Reef	50 Reef Balls	Don & Marge Albright	12/18/2002	38 52.54998N	074 40.66002W
136	Hillman's Reef	50 Reef Balls	H.M. Hillman Brass Co.	12/18/2002	38 52.38000N	074 40.90002W
137	Bruce H. Brong Reef	Concrete castings (x57)	Family & Friends	12/18/2002	38 52.39998N	074 41.08002W
138	Subway Car	Subway Car (Redbird I)	New York City Transit Authority	7/3/2003	38 53.49000N	074 40.21998W
139	Redbird Reef I	Subway Car (Redbird I)	New York City Transit Authority	7/3/2003	38 53.56002N	074 40.27002W
140	Subway Car	Subway Car (Redbird I)	New York City Transit Authority	7/3/2003	38 53.70000N	074 40.30998W
141	Subway Car	Subway Car (Redbird I)	New York City Transit Authority	7/3/2003	38 53.71002N	074 40.20000W
142	Subway Car	Subway Car (Redbird I)	New York City Transit Authority	7/3/2003	38 53.62002N	074 40.11000W
143	Subway Car	Subway Car (Redbird I)	New York City Transit Authority	7/3/2003	38 53.59002N	074 40.12998W
144	Subway Car	Subway Car (Redbird I)	New York City Transit Authority	7/3/2003	38 53.68002N	074 40.32000W

CAPE MAY REEF

ID #	Name	Description	Sponsor	Date	Latitude	Longitude
				Deployed		
145	Subway Car	Subway Car (Redbird II)	New York City Transit Authority	7/3/2003	38 53.23002N	074 39.82002W
146	Redbird Reef II	Subway Car (Redbird II)	New York City Transit Authority	7/3/2003	38 53.20002N	074 39.88998W
147	Subway Car	Subway Car (Redbird II)	New York City Transit Authority	7/3/2003	38 53.14002N	074 39.99000W
148	Subway Car	Subway Car (Redbird II)	New York City Transit Authority	7/3/2003	38 53.19000N	074 40.06998W
149	Subway Car	Subway Car (Redbird II)	New York City Transit Authority	7/3/2003	38 53.26998N	074 39.91998W
150	Subway Car	Subway Car (Redbird II)	New York City Transit Authority	7/3/2003	38 53.19000N	074 39.88002W
151	Subway Car	Subway Car (Redbird II)	New York City Transit Authority	7/3/2003	38 53.14998N	074 40.00998W
152	Subway Car	Subway Car (Redbird II)	New York City Transit Authority	7/3/2003	38 53.19000N	074 40.03002W
153	Subway Car	Subway Car (Redbird II)	New York City Transit Authority	7/3/2003	38 53.28000N	074 39.99000W
154	Subway Car	Subway Car (Redbird II)	New York City Transit Authority	7/3/2003	38 53.20002N	074 39.88002W
155	Subway Car	Subway Car (Redbird III)	New York City Transit Authority	7/3/2003	38 51.25002N	074 41.71002W
156	Redbird Reef III	Subway Car (Redbird III)	New York City Transit Authority	7/3/2003	38 51.31998N	074 41.50998W
157	Subway Car	Subway Car (Redbird III)	New York City Transit Authority	7/3/2003	38 51.25998N	074 41.46000W
158	Subway Car	Subway Car (Redbird III)	New York City Transit Authority	7/3/2003	38 51.16002N	074 41.56998W
159	Subway Car	Subway Car (Redbird III)	New York City Transit Authority	7/3/2003	38 51.18000N	074 41.62002W
160	Subway Car	Subway Car (Redbird III)	New York City Transit Authority	7/3/2003	38 51.34002N	074 41.53998W
161	Subway Car	Subway Car (Redbird III)	New York City Transit Authority	7/3/2003	38 51.30000N	074 41.47998W
162	Subway Car	Subway Car (Redbird III)	New York City Transit Authority	7/3/2003	38 51.27000N	074 41.46000W
163	Subway Car	Subway Car (Redbird III)	New York City Transit Authority	7/3/2003	38 51.24000N	074 41.46000W
164	Subway Car	Subway Car (Redbird IV)	New York City Transit Authority	7/3/2003	38 50.92002N	074 41.97000W
165	Redbird Reef IV	Subway Car (Redbird IV)	New York City Transit Authority	7/3/2003	38 51.01998N	074 41.82000W
166	Subway Car	Subway Car (Redbird IV)	New York City Transit Authority	7/3/2003	38 51.01002N	074 41.74002W
167	Subway Car	Subway Car (Redbird IV)	New York City Transit Authority	7/3/2003	38 50.89002N	074 41.68002W
168	Subway Car	Subway Car (Redbird IV)	New York City Transit Authority	7/3/2003	38 50.86002N	074 41.71002W
169	Subway Car	Subway Car (Redbird IV)	New York City Transit Authority	7/3/2003	38 50.83998N	074 41.80998W
170	Subway Car	Subway Car (Redbird IV)	New York City Transit Authority	7/3/2003	38 50.85000N	074 41.88000W
171	Subway Car	Subway Car (Redbird IV)	New York City Transit Authority	7/3/2003	38 51.00000N	074 41.83998W
172	Subway Car	Subway Car (Redbird IV)	New York City Transit Authority	7/3/2003	38 51.01002N	074 41.76000W
173	Subway Car	Subway Car (Redbird IV)	New York City Transit Authority	7/3/2003	38 50.86998N	074 41.71002W
174	Subway Car	Subway Car (Redbird V)	New York City Transit Authority	7/3/2003	38 50.77998N	074 42.01998W
175	Subway Car	Subway Car (Redbird V)	New York City Transit Authority	7/3/2003	38 50.76000N	074 41.98002W
176	Subway Car	Subway Car (Redbird V)	New York City Transit Authority	7/3/2003	38 50.74002N	074 41.89998W
177	Subway Car	Subway Car (Redbird V)	New York City Transit Authority	7/3/2003	38 50.71998N	074 41.86002W
178	Subway Car	Subway Car (Redbird V)	New York City Transit Authority	7/3/2003	38 50.71998N	074 41.86002W
179	Redbird Reef V	Subway Car (Redbird V)	New York City Transit Authority	7/3/2003	38 50.65002N	074 41.83998W
180	Subway Car	Subway Car (Redbird V)	New York City Transit Authority	7/3/2003	38 50.65002N	074 41.83998W
181	Subway Car	Subway Car (Redbird V)	New York City Transit Authority	7/3/2003	38 50.59998N	074 41.88000W
182	Subway Car	Subway Car (Redbird V)	New York City Transit Authority	7/3/2003	38 50.88000N	074 41.91000W
183	Subway Car	Subway Car (Redbird V)	New York City Transit Authority	7/3/2003	38 50.55000N	074 42.01002W
186	Allan R	110' Tugboat - "Allan R." (formerly "- Kings Pt.")	Ann E. Clark Foundation	3/26/2004	38 51.48000N	074 42.03000W

CAPE MAY REEF

ID #	Name	Description	Sponsor	Date Deployed	Latitude	Longitude
187	Guido's Tug	110' Tugboat - "Guido's Tug" (formerly - "Georgia Moran")	South Jersey Fishing Center	3/26/2004	38 51.46002N	074 42.01998W
188	Elizabeth	194' Ferry Boat - "Elizabeth" (AKA "Hooter's Ferry")	Commissioner's Coastal Initiative	8/3/2005	38 50.68002N	074 43.08000W
189	Concrete Rubble	concrete rubble (x16 units)	U.S. Coast Guard Sinkers	5/1/2007	38 52.12998N	074 41.50998W
190	Miss Beth	80' Trawler - "Miss Beth" (AKA "Lucky 13")	Atlantic Cape Fisheries, Inc.	1/29/2008	38 53.23998N	074 40.54998W
191	Car	Subway Car (55'x9'x11') (15 subway cars)	New York City Transit Authority	8/25/2008	38 53.64000N	074 40.42998W
192	Car	Subway Car (55'x9'x11')	New York City Transit Authority	8/25/2008	38 53.62998N	074 40.38000W
193	Car	Subway Car (55'x9'x11')	New York City Transit Authority	8/25/2008	38 53.67000N	074 40.32000W
194	Car	Subway Car (55'x9'x11')	New York City Transit Authority	8/25/2008	38 53.68002N	074 40.39002W
195	Car	Subway Car (55'x9'x11')	New York City Transit Authority	8/25/2008	38 53.62998N	074 40.41000W
196	Car	Subway Car (55'x9'x11')	New York City Transit Authority	8/25/2008	38 53.64000N	074 40.42002W
197	Car	Subway Car (55'x9'x11')	New York City Transit Authority	8/25/2008	38 53.68002N	074 40.27002W
198	Car	Subway Car (55'x9'x11')	New York City Transit Authority	8/25/2008	38 53.68998N	074 40.33002W
199	Car	Subway Car (55'x9'x11')	New York City Transit Authority	8/25/2008	38 53.70000N	074 40.38000W
200	Car	Subway Car (55'x9'x11')	New York City Transit Authority	8/25/2008	38 53.65998N	074 40.38000W
201	Car	Subway Car (55'x9'x11')	New York City Transit Authority	8/25/2008	38 53.62998N	074 40.36002W
202	Car	Subway Car (55'x9'x11')	New York City Transit Authority	8/25/2008	38 53.62002N	074 40.39002W
203	Car	Subway Car (55'x9'x11')	New York City Transit Authority	8/25/2008	38 53.62998N	074 40.29000W
204	Car	Subway Car (55'x9'x11')	New York City Transit Authority	8/25/2008	38 53.64000N	074 40.38000W
205	Car	Subway Car (55'x9'x11')	New York City Transit Authority	8/25/2008	38 53.65998N	074 40.35000W
206	Car	Subway Car (55'x9'x11') (13 subway cars)	New York City Transit Authority	8/25/2008	38 51.45000N	074 42.43998W
207	Car	Subway Car (55'x9'x11')	New York City Transit Authority	8/25/2008	38 51.43998N	074 42.45000W
208	Car	Subway Car (55'x9'x11')	New York City Transit Authority	8/25/2008	38 51.42000N	074 42.40998W
209	Car	Subway Car (55'x9'x11')	New York City Transit Authority	8/25/2008	38 51.42000N	074 42.40002W
210	Car	Subway Car (55'x9'x11')	New York City Transit Authority	8/25/2008	38 51.43002N	074 42.40002W
211	Car	Subway Car (55'x9'x11')	New York City Transit Authority	8/25/2008	38 51.43002N	074 42.40002W
212	Car	Subway Car (55'x9'x11')	New York City Transit Authority	8/25/2008	38 51.46002N	074 42.42000W
214	Car	Subway Car (55'x9'x11')	New York City Transit Authority	8/25/2008	38 51.43002N	074 42.43998W
215	Car	Subway Car (55'x9'x11')	New York City Transit Authority	8/25/2008	38 51.40998N	074 42.43002W
216	Car	Subway Car (55'x9'x11')	New York City Transit Authority	8/25/2008	38 51.39000N	074 42.45000W
217	Car	Subway Car (55'x9'x11')	New York City Transit Authority	8/25/2008	38 51.42000N	074 42.42000W
218	Car	Subway Car (55'x9'x11')	New York City Transit Authority	8/25/2008	38 51.42000N	074 42.42000W
219	Car	Subway Car (55'x9'x11') (23 Subway cars)	New York City Transit Authority	9/8/2008	38 50.61000N	074 42.12000W
220	Car	Subway Car (55'x9'x11')	New York City Transit Authority	9/8/2008	38 50.61000N	074 42.16998W
221	Car	Subway Car (55'x9'x11')	New York City Transit Authority	9/8/2008	38 50.59998N	074 42.16998W
222	Car	Subway Car (55'x9'x11')	New York City Transit Authority	9/8/2008	38 50.59002N	074 42.16998W
223	Car	Subway Car (55'x9'x11')	New York City Transit Authority	9/8/2008	38 50.58000N	074 42.18000W
224	Car	Subway Car (55'x9'x11')	New York City Transit Authority	9/8/2008	38 50.58000N	074 42.19002W
225	Car	Subway Car (55'x9'x11')	New York City Transit Authority	9/8/2008	38 50.56998N	074 42.16998W
226	Car	Subway Car (55'x9'x11')	New York City Transit Authority	9/8/2008	38 50.58000N	074 42.19002W

CAPE MAY REEF

ID #	Name	Description	Sponsor	Date	Latitude	Longitude
				Deployed		
227	Car	Subway Car (55'x9'x11')	New York City Transit Authority	9/8/2008	38 50.56002N	074 42.15000W
228	Car	Subway Car (55'x9'x11')	New York City Transit Authority	9/8/2008	38 50.58000N	074 42.19002W
229	Car	Subway Car (55'x9'x11')	New York City Transit Authority	9/8/2008	38 50.59002N	074 42.16998W
230	Car	Subway Car (55'x9'x11')	New York City Transit Authority	9/8/2008	38 50.59002N	074 42.18000W
231	Car	Subway Car (55'x9'x11')	New York City Transit Authority	9/8/2008	38 50.59002N	074 42.19998W
232	Car	Subway Car (55'x9'x11')	New York City Transit Authority	9/8/2008	38 50.58000N	074 42.15000W
233	Car	Subway Car (55'x9'x11')	New York City Transit Authority	9/8/2008	38 50.56002N	074 42.13998W
234	Car	Subway Car (55'x9'x11')	New York City Transit Authority	9/8/2008	38 50.56002N	074 42.16998W
235	Car	Subway Car (55'x9'x11')	New York City Transit Authority	9/8/2008	38 50.56002N	074 42.16998W
236	Car	Subway Car (55'x9'x11')	New York City Transit Authority	9/8/2008	38 50.55000N	074 42.16998W
237	Car	Subway Car (55'x9'x11')	New York City Transit Authority	9/8/2008	38 50.53002N	074 42.21000W
238	Car	Subway Car (55'x9'x11')	New York City Transit Authority	9/8/2008	38 50.53002N	074 42.16998W
239	Car	Subway Car (55'x9'x11')	New York City Transit Authority	9/8/2008	38 50.50998N	074 42.16002W
240	Car	Subway Car (55'x9'x11')	New York City Transit Authority	9/8/2008	38 50.50998N	074 42.16002W
241	Car	Subway Car (55'x9'x11')	New York City Transit Authority	9/8/2008	38 50.50998N	074 42.15000W
242	Car	Subway Car (55'x9'x11') (21 Subway cars)	New York City Transit Authority	9/8/2008	38 50.65002N	074 42.49998W
243	Car	Subway Car (55'x9'x11')	New York City Transit Authority	9/8/2008	38 50.68002N	074 42.54000W
244	Car	Subway Car (55'x9'x11')	New York City Transit Authority	9/8/2008	38 50.71002N	074 42.55002W
245	Car	Subway Car (55'x9'x11')	New York City Transit Authority	9/8/2008	38 50.71002N	074 42.57000W
246	Car	Subway Car (55'x9'x11')	New York City Transit Authority	9/8/2008	38 50.71002N	074 42.60000W
247	Car	Subway Car (55'x9'x11')	New York City Transit Authority	9/8/2008	38 50.68998N	074 42.64998W
248	Car	Subway Car (55'x9'x11')	New York City Transit Authority	9/8/2008	38 50.65998N	074 42.61002W
249	Car	Subway Car (55'x9'x11')	New York City Transit Authority	9/8/2008	38 50.65002N	074 42.61998W
250	Car	Subway Car (55'x9'x11')	New York City Transit Authority	9/8/2008	38 50.64000N	074 42.61998W
251	Car	Subway Car (55'x9'x11')	New York City Transit Authority	9/8/2008	38 50.64000N	074 42.61002W
252	Car	Subway Car (55'x9'x11')	New York City Transit Authority	9/8/2008	38 50.68002N	074 42.63000W
253	Car	Subway Car (55'x9'x11')	New York City Transit Authority	9/8/2008	38 50.65998N	074 42.63000W
254	Car	Subway Car (55'x9'x11')	New York City Transit Authority	9/8/2008	38 50.65998N	074 42.63000W
255	Car	Subway Car (55'x9'x11')	New York City Transit Authority	9/8/2008	38 50.65002N	074 42.63000W
256	Car	Subway Car (55'x9'x11')	New York City Transit Authority	9/8/2008	38 50.64000N	074 42.61998W
257	Car	Subway Car (55'x9'x11')	New York City Transit Authority	9/8/2008	38 50.64000N	074 42.61998W
258	Car	Subway Car (55'x9'x11')	New York City Transit Authority	9/8/2008	38 50.64000N	074 42.61002W
259	Car	Subway Car (55'x9'x11')	New York City Transit Authority	9/8/2008	38 50.64000N	074 42.61002W
260	Car	Subway Car (55'x9'x11')	New York City Transit Authority	9/8/2008	38 50.64000N	074 42.60000W
261	Car	Subway Car (55'x9'x11')	New York City Transit Authority	9/8/2008	38 50.64000N	074 42.60000W
262	Car	Subway Car (55'x9'x11')	New York City Transit Authority	9/8/2008	38 50.64000N	074 42.61002W
263	Reef Balls	50 Reef Balls	N/A	12/17/2010	38 53.65002N	074 40.36998W
264	Reef Balls	51 Reef Balls	N/A	12/17/2010	38 51.43998N	074 42.42000W
265	Reef Balls	52 Reef Balls	N/A	12/17/2010	38 50.56002N	074 42.16998W
266	Reef Balls	53 Reef Balls	N/A	12/17/2010	38 50.65002N	074 42.60000W
267	Reef Balls	54 Reef Balls	N/A	12/17/2010	38 50.61000N	074 42.18000W

CAPE MAY REEF

ID #	Name	Description	Sponsor	Date Deployed	Latitude	Longitude
268	Don Byrne Memorial Reef	138 Reef Balls	N/A	12/17/2010	38 50.65002N	074 42.49998W
269	Danny Malone for Parents Charter Boat Association	Great Lakes Dredging and Dock Co Del River Dredge Rock	N/A	12/5/2017	38 52.90068N	074 41.23536W
292	Wreck	Caisson Gate - 140L X 25W X 40H	Cape May Party and Charter Boat Association	9/25/2019	38 50.69898N	074 43.02300W