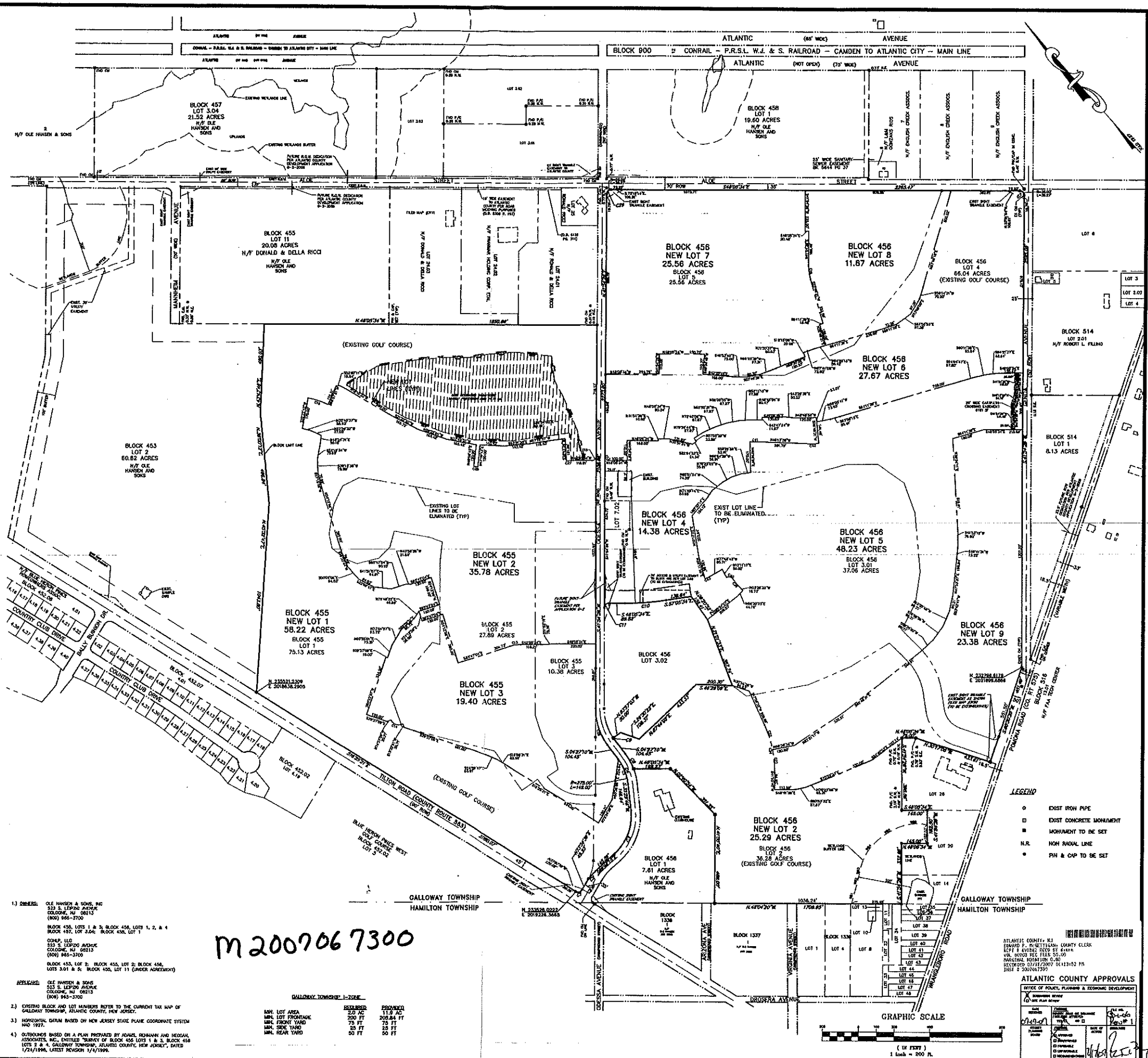


U.S.G.S. MAP SCALE: 1"=2000' SOURCE: PLEASANTVILLE QUADRANGLE #107

Table with 5 columns: CURVE #, LENGTH, BEARING, DELTA, CHORD BEARING, CHORD LENGTH. It lists various curve data for the subdivision.

Table with 3 columns: LINE, LENGTH, BEARING. It lists the bearings and lengths for various lines in the subdivision.

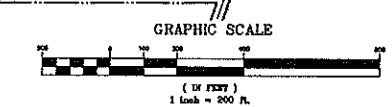


THE UNDERSIGNED HEREBY CERTIFY THAT HE IS THE OWNER AND HAS REQUESTED THIS PLAN TO BE MADE AND FILED BY THE COUNTY CLERK'S OFFICE.
3/14/07 David M. Madrone
3/14/07 David M. Madrone
3/14/07 Kevin A. Allen
3/14/07 Kevin A. Allen
3/14/07 Pamela Allen
3/14/07 Pamela Allen
3/14/07 Pamela Allen

- 1) DIMENSIONS: OLE HANSEN & SONS, INC. 323 S. LEPAGE AVENUE COLOON, NJ 08213 (609) 966-3700
2) EXISTING BLOCK AND LOT MARKERS NOTED TO THE CURRENT TAX MAP OF GALLOWAY TOWNSHIP, ATLANTIC COUNTY, NEW JERSEY.
3) HORIZONTAL DATUM BASED ON NEW JERSEY STATE PLANE COORDINATE SYSTEM HAD 1927.
4) OUTLINE BASED ON A PLAN PREPARED BY ADAMS, REHMANN AND BEGGAN ASSOCIATES, INC. ENTITLED 'SURVEY OF BLOCK 455 LOTS 1 & 3, BLOCK 456 LOTS 2 & 4, GALLOWAY TOWNSHIP, ATLANTIC COUNTY, NEW JERSEY, DATED 1/24/06, LATEST REVISION 1/4/06.'

M 2007067300

Table with 3 columns: MIN. LOT AREA, MIN. LOT FRONTAGE, MIN. FRONT YARD, MIN. SIDE YARD, MIN. REAR YARD. It lists minimum requirements for lot dimensions.



ATLANTIC COUNTY APPROVALS
OFFICE OF PLANNING & ECONOMIC DEVELOPMENT
5/24/2005
1"=200'

Vertical strip on the right side containing logos and contact information for 'adams, rehmann & beggan ENGINEERS SURVEYORS & PLANNERS' and 'Richard A. Madrone'.

W 500 J 06 J 300

W:\FileRoom\H05051700\SUR\DWG\5051700-SUB-RES.dwg 2/22/2007 7:27:11 AM EST