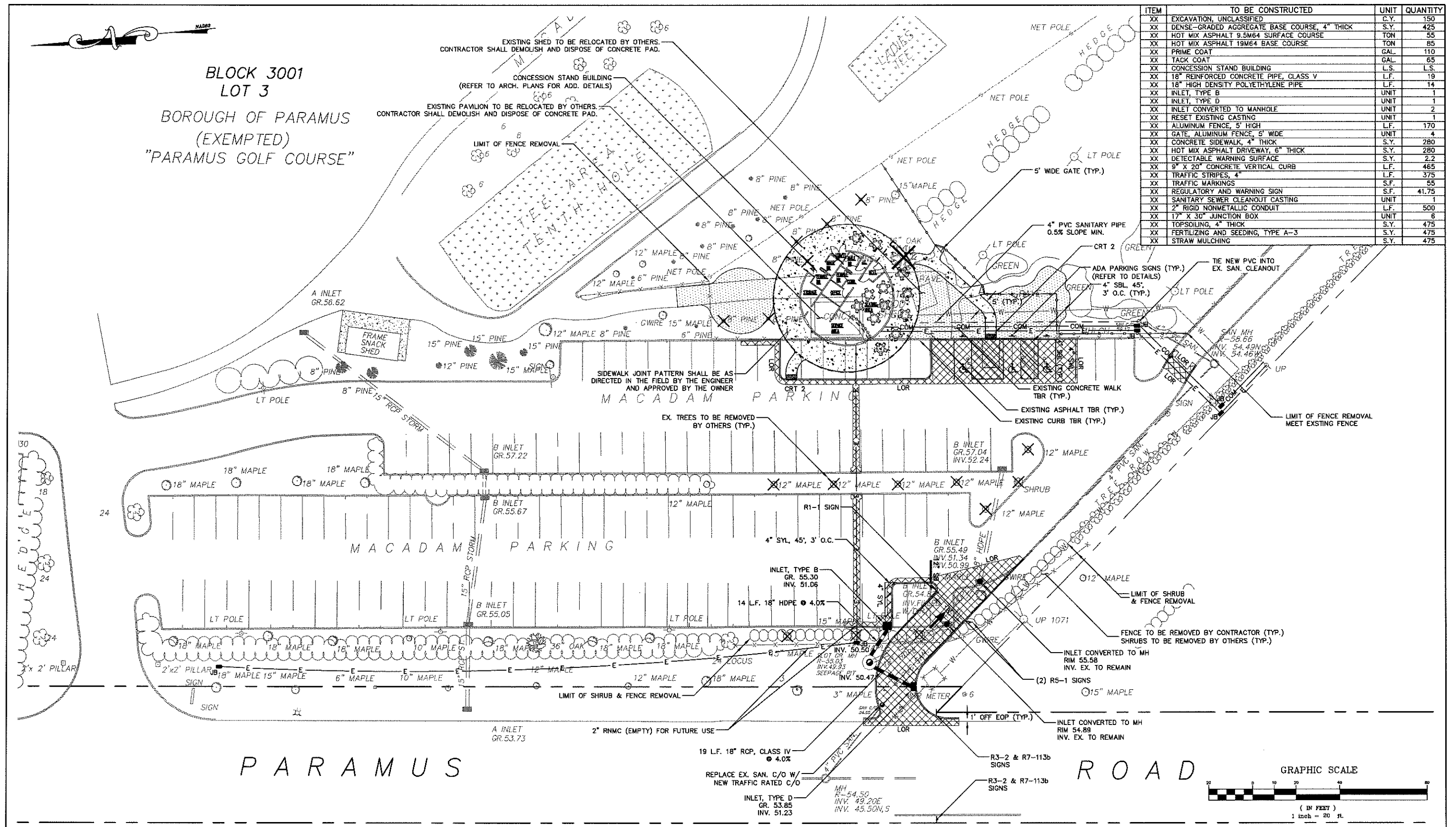


BLOCK 3001
LOT 3
BOROUGH OF PARAMUS
(EXEMPTED)
"PARAMUS GOLF COURSE"

ITEM	TO BE CONSTRUCTED	UNIT	QUANTITY
XX	EXCAVATION, UNCLASSIFIED	C.Y.	150
XX	DENSE-GRADED AGGREGATE BASE COURSE, 4" THICK	S.Y.	425
XX	HOT MIX ASPHALT 9.5M64 SURFACE COURSE	TON	55
XX	HOT MIX ASPHALT 19M64 BASE COURSE	TON	85
XX	PRIME COAT	GAL.	110
XX	TACK COAT	GAL.	65
XX	CONCESSION STAND BUILDING	L.S.	L.S.
XX	18" REINFORCED CONCRETE PIPE, CLASS V	L.F.	19
XX	18" HIGH DENSITY POLYETHYLENE PIPE	L.F.	14
XX	INLET, TYPE B	UNIT	1
XX	INLET, TYPE D	UNIT	1
XX	INLET CONVERTED TO MANHOLE	UNIT	2
XX	RESET EXISTING CASTING	UNIT	1
XX	ALUMINUM FENCE, 5' HIGH	L.F.	170
XX	GATE, ALUMINUM FENCE, 5' WIDE	UNIT	4
XX	CONCRETE SIDEWALK, 4" THICK	S.Y.	280
XX	HOT MIX ASPHALT DRIVEWAY, 6" THICK	S.Y.	280
XX	DETECTABLE WARNING SURFACE	S.Y.	2.2
XX	9" X 20" CONCRETE VERTICAL CURB	L.F.	465
XX	TRAFFIC STRIPES, 4"	L.F.	375
XX	TRAFFIC MARKINGS	S.F.	55
XX	REGULATORY AND WARNING SIGN	S.F.	41.75
XX	SANITARY SEWER CLEANOUT CASTING	UNIT	1
XX	2" RIGID NONMETALLIC CONDUIT	L.F.	500
XX	17" X 30" JUNCTION BOX	UNIT	6
XX	TOPSOILING, 4" THICK	S.Y.	475
XX	FERTILIZING AND SEEDING, TYPE A-3	S.Y.	475
XX	STRAW MULCHING	S.Y.	475



NO.	DATE	DESCRIPTION	SURVEYED BY	DRAWN BY	DESIGNED BY	CHECKED BY

NO. DATE DESCRIPTION SURVEYED BY DRAWN BY DESIGNED BY CHECKED BY

PLOT BY: jrc/pjw PLOT DATE: 4/3/2018 2:35 PM

Boswell ENGINEERING
EST. 1924
ENGINEERS - SURVEYORS - PLANNERS - SCIENTISTS
330 PHILLIPS AVENUE, SOUTH HACKENSACK, N.J. 07606
TEL: (201) 641-0770 • FAX: (201) 641-1831
N.J. CERTIFICATE OF AUTHORIZATION NO. 24GA27958000

STEPHEN T. BOSWELL
PROFESSIONAL ENGINEER N.J. LIC. 34680

CHRISTOPHER J. NASH
PROFESSIONAL ENGINEER N.J. LIC. 31605

**NEW CONCESSION STAND & ENTRANCE ROAD
PARAMUS GOLF COURSE & COUNTRY CLUB
SITE PLAN**
BOROUGH OF PARAMUS
BERGEN COUNTY NEW JERSEY

SURVEYED BY: AB DESIGNED BY: JIM SCALE: 1"=20' JOB NO. DATE:
DRAWN BY: JIM CHECKED BY: ND PA-2800 3/12/18
CADD FILE: PA-2800-CP SHEET 3 OF XX