

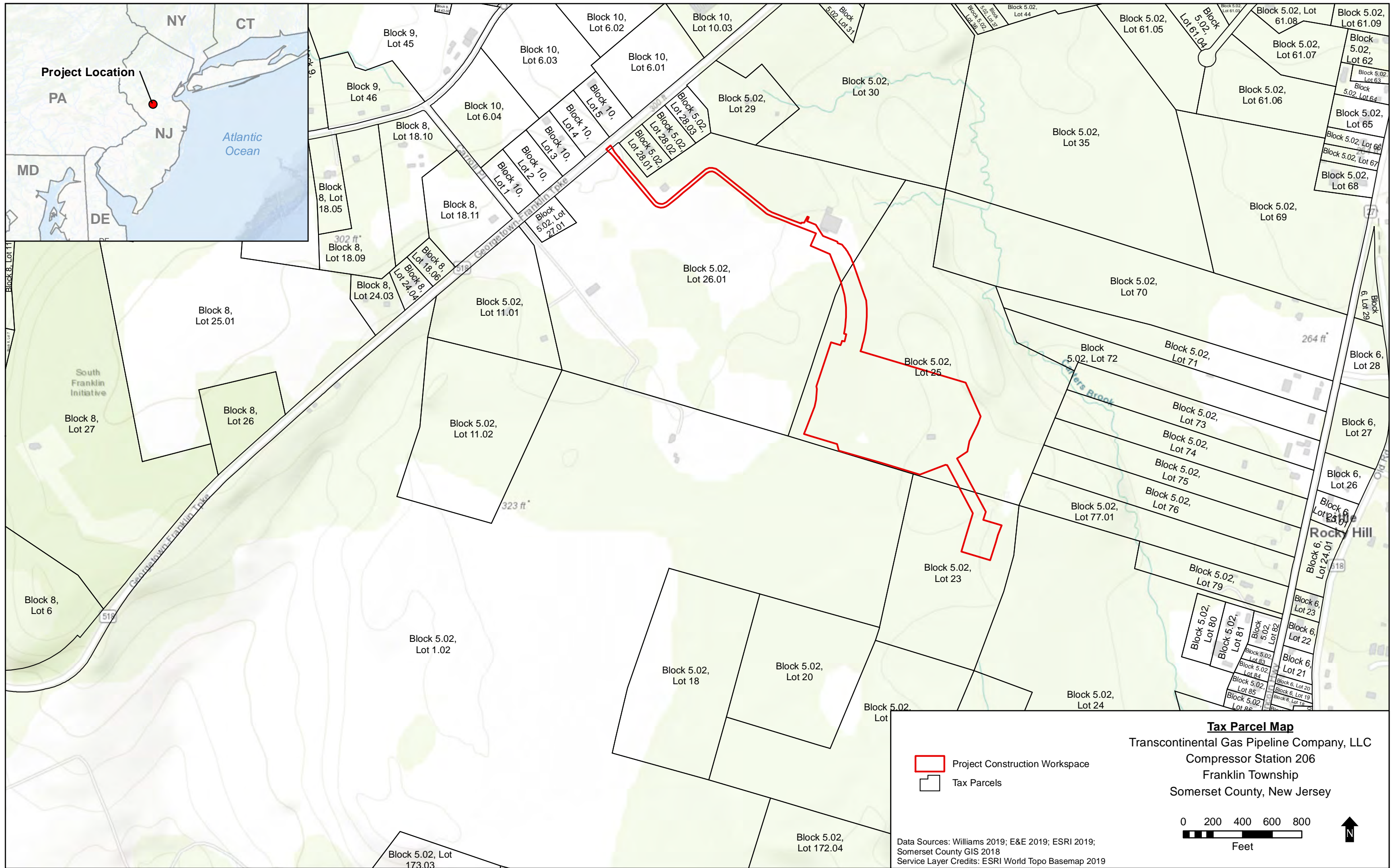


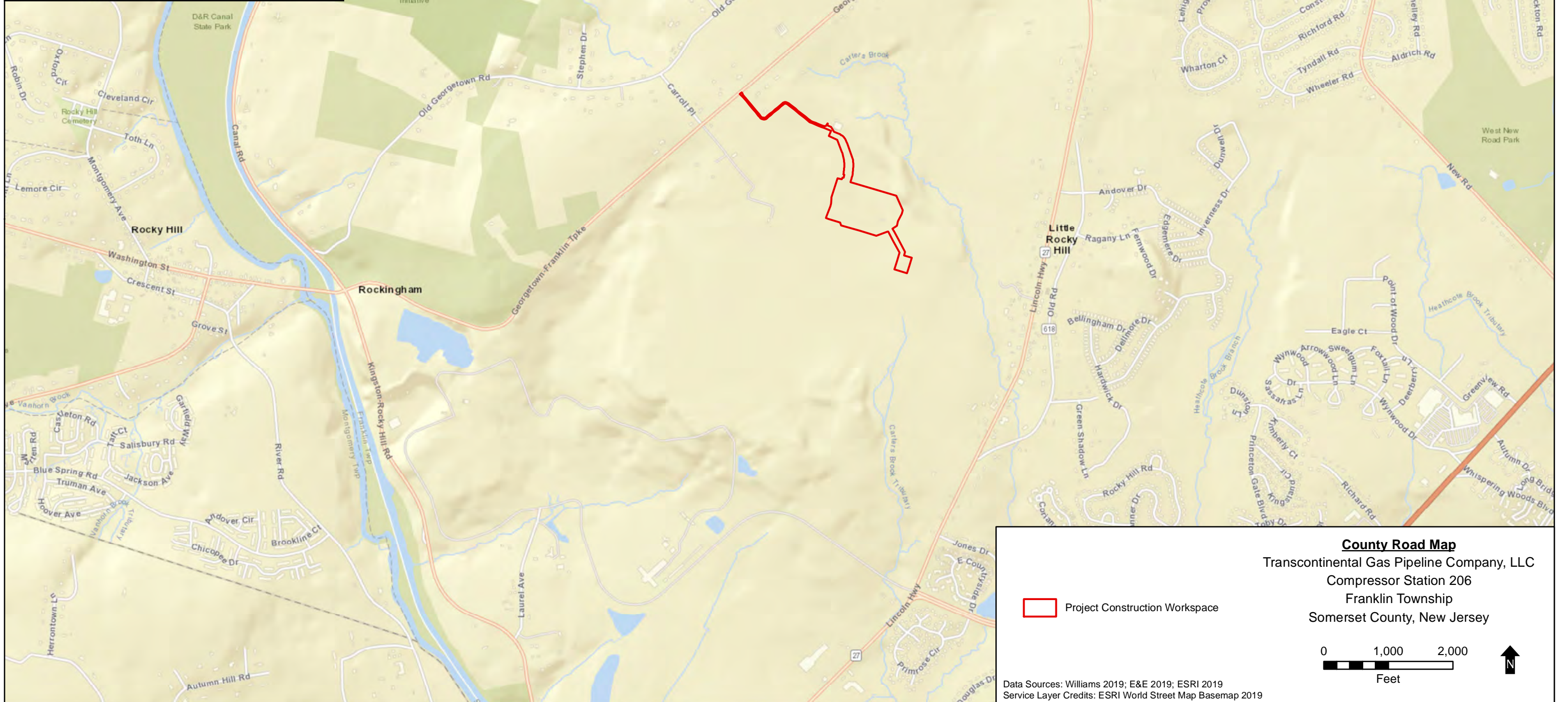
TRANSCONTINENTAL GAS PIPE LINE COMPANY, LLC

APPENDIX B – FIGURES


NORTHEAST SUPPLY ENHANCEMENT PROJECT


January 2020






County Road Map
 Transcontinental Gas Pipeline Company, LLC
 Compressor Station 206
 Franklin Township
 Somerset County, New Jersey

 Project Construction Workspace


0 1,000 2,000

 Feet



Data Sources: Williams 2019; E&E 2019; ESRI 2019
 Service Layer Credits: ESRI World Street Map Basemap 2019



USGS Topographic Map
Transcontinental Gas Pipeline Company, LLC
Compressor Station 206
Franklin Township
Somerset County, New Jersey

 Project Construction Workspace

0 1,000 2,000
Feet

↑ N

Data Sources: Williams 2019; E&E 2019; ESRI 2019
Service Layer Credits: ESRI USA Topo Basemap 2019



- Soils List:**
- EkbA - Elkton silt loam, 0 to 2 percent slopes
 - KepA - Keyport silt loam, 0 to 2 percent slopes
 - KepB - Keyport silt loam, 2 to 5 percent slopes
 - LemB - Lehigh silt loam, 2 to 6 percent slopes
 - LemC - Lehigh silt loam, 6 to 12 percent slopes
 - MonA - Mount Lucas silt loam, 0 to 2 percent slopes
 - MonB - Mount Lucas silt loam, 2 to 6 percent slopes
 - MopCb - Mount Lucas-Watchung silt loams, 6 to 12 percent slopes, very stony
 - NehB - Neshaminy silt loam, 2 to 6 percent slopes
 - NehEb - Neshaminy silt loam, 18 to 35 percent slopes, very stony
 - NemCb - Neshaminy-Mount Lucas silt loams, 6 to 12 percent slopes, very stony
 - PeoC - Penn channery silt loam, 6 to 12 percent slopes
 - QY - Quarries
 - RorAt - Rowland silt loam, 0 to 2 percent slopes, frequently flooded
 - WasA - Watchung silt loam, 0 to 2 percent slopes



SSURGO Soils Map
 Transcontinental Gas Pipeline Company, LLC
 Compressor Station 206
 Franklin Township
 Somerset County, New Jersey

Project Construction Workspace
 Soils (SSURGO)

0 500 1,000
 Feet

Data Sources: Williams 2019; E&E 2019; ESRI 2019; NRCS 2018
 Service Layer Credits: ESRI world Imagery Basemap 2019