

Figure 7. Hydrogeologic cross-section A-A'

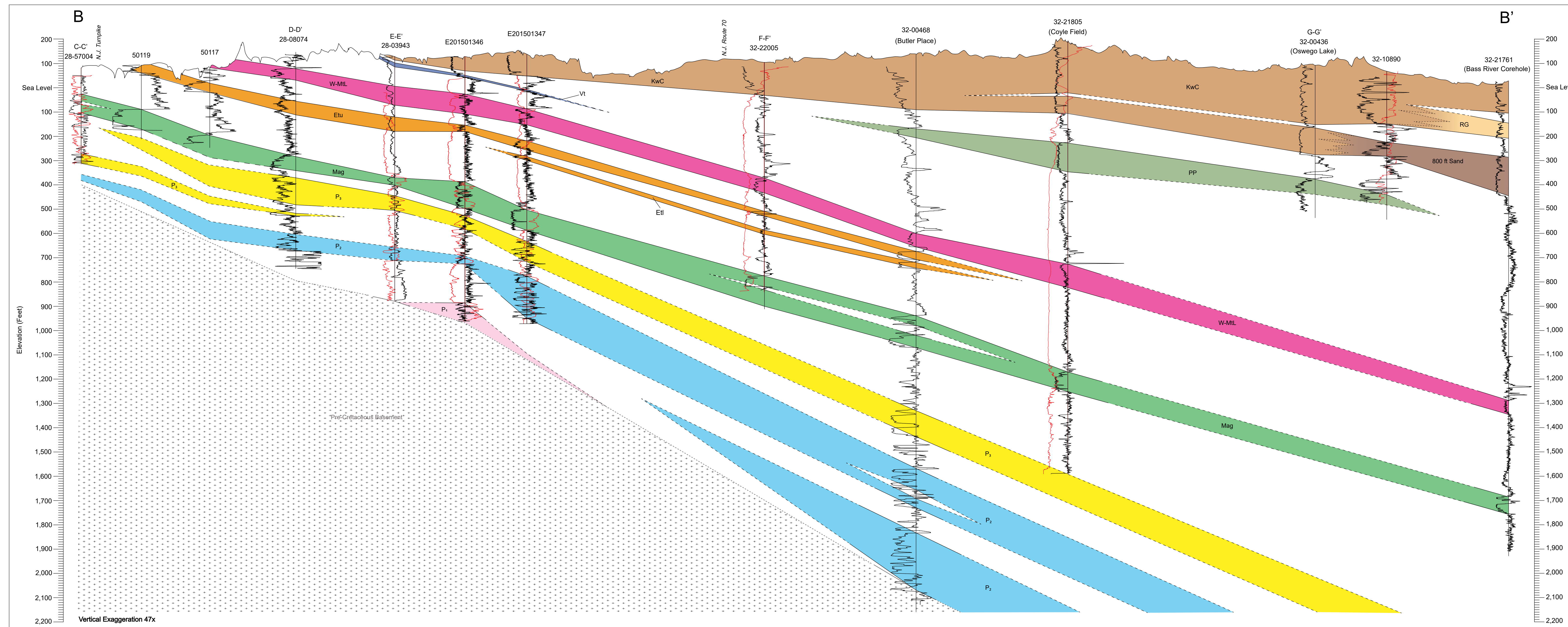
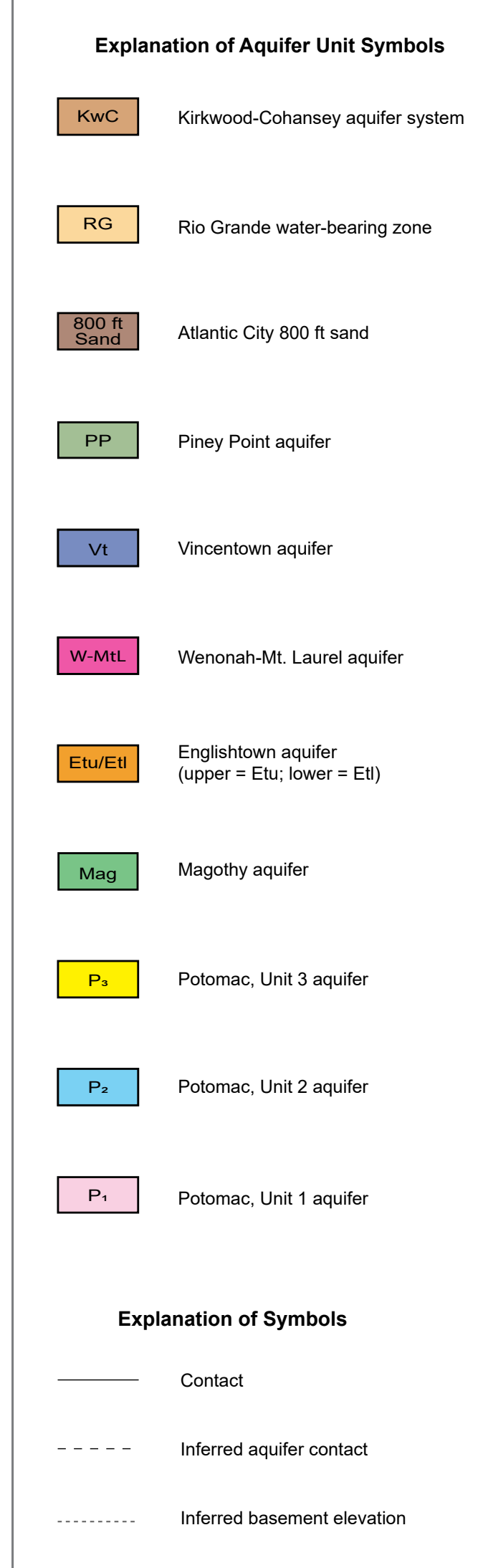
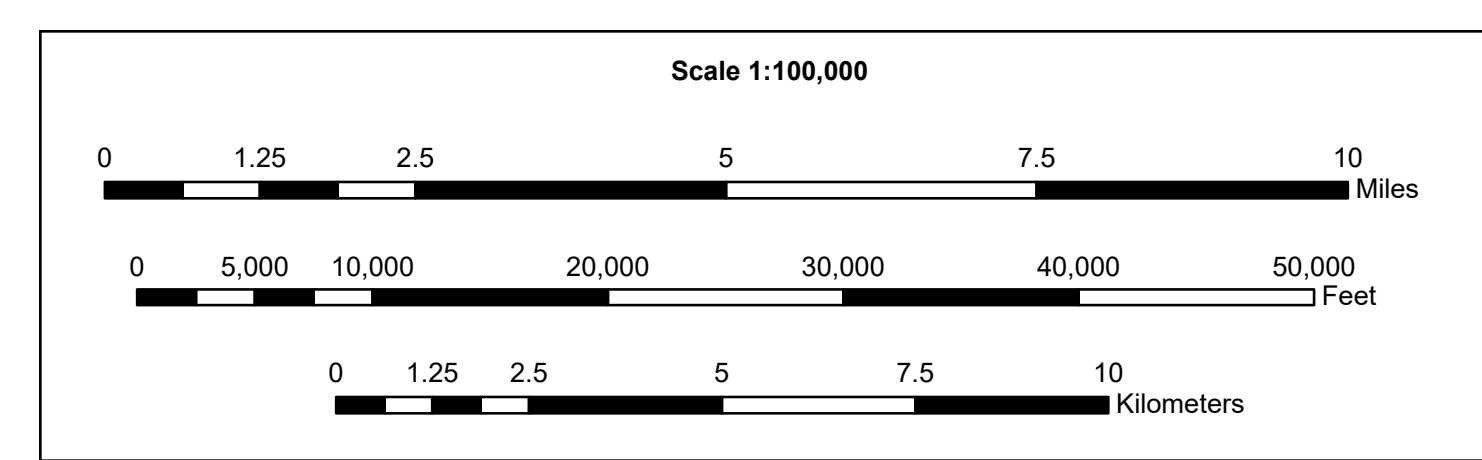


Figure 8. Hydrogeologic cross-section B-B'



| NJDEP Permit Number or USGS GWS Number | Municipality | USGS Quadrangle Name | Total Depth (ft) | Hydrogeologic Cross-Section |
|--|-------------------|----------------------|------------------|-----------------------------|
| 50037 | Burlington Tap | Brick, PA,NJ | 294 | C-C |
| 50117 | Cherry Hill Tap | Absecon, PA,NJ | 305 | B-B |
| 50119 | Cherry Hill Tap | Trenton East, NJ,PA | 305 | B-B |
| 50220 | Bordentown Tap | Trenton West, PA,NJ | 252 | I-I' |
| 50222 | Moorestown Tap | Moorestown, NJ | 437 | D-D' |
| 50314 | Mount Laurel Tap | Moorestown, NJ | 420 | E-E' |
| 50417 | Shamong Tap | Indian Mills, NJ | 244 | A-A |
| 50428 | Springfield Tap | Columbus, NJ | 893 | I-I', E-E' |
| 50448 | Wilmington Tap | Beverly, PA,NJ | 318 | C-C |
| 50465 | Wilmington Tap | Beverly, PA,NJ | 121 | A-A |
| 50471 | Springfield Tap | Brick, PA,NJ | 295 | D-D' |
| 27-00228 | Westampton Tap | Brick, PA,NJ | 345 | D-D' |
| 27-01689 | Wilmington Tap | Beverly, PA,NJ | 298 | A-A |
| 27-01728 | Wilmington Tap | Brick, PA,NJ | 415 | A-A, C-C |
| 27-01743 | Westampton Tap | Brick, PA,NJ | 215 | A-A |
| 27-02848 | Westampton Tap | Brick, PA,NJ | 528 | A-A, D-D' |
| 28-01550 | Marshall Tap | Columbus, NJ | 310 | A-A, F-F' |
| 28-03043 | North Hanover Tap | New Egypt, NJ | 1008 | B-B', E-E' |
| 28-01128 | Springfield Tap | Columbus, NJ | 641 | I-I' |
| 28-07100 | Bordentown Tap | Brick, PA,NJ | 233 | I-I', G-G' |
| 28-08074 | North Hanover Tap | New Egypt, NJ | 891 | B-B', D-D' |
| 28-25660 | Marshall Tap | Columbus, NJ | 828 | D-D', E-E' |
| 28-25852 | Marshall Tap | Columbus, NJ | 759 | D-D', I-I' |
| 28-28288 | Cherry Hill Tap | Columbus, NJ | 248 | D-D' |
| 28-34241 | North Hanover Tap | New Egypt, NJ | 875 | D-D' |
| 28-54745 | Wilmington Boro | New Egypt, NJ | 746 | E-E' |
| 28-57004 | Cherry Hill Tap | Trenton East, NJ,PA | 323 | B-B', C-C |
| 31-08274 | Moorestown Tap | Moorestown, NJ | 270 | H-H', C-C |
| 31-04637 | Mount Holly Tap | Mount Holly, NJ | 380 | A-A |
| 31-05023 | Medford Tap | Medford Lakes, NJ | 1132 | A-A |
| 31-06305 | EvESHan Tap | Moorestown, NJ | 601 | H-H' |
| 31-08874 | Mount Holly Tap | Mount Holly, NJ | 607 | A-A, E-E' |
| 31-08819 | Lumberton Tap | Mount Holly, NJ | 401 | A-A |
| 31-07924 | Mount Laurel Tap | Moorestown, NJ | 681 | E-E' |
| 31-08023 | Maple Shade Tap | Moorestown, NJ | 523 | H-H', E-E' |
| 31-09276 | Medford Tap | Medford Lakes, NJ | 823 | A-A, F-F' |
| 31-19212 | Mount Laurel Tap | Moorestown, NJ | 591 | E-E' |
| 31-21189 | Medford Tap | Medford Lakes, NJ | 718 | A-A |
| 31-27677 | Medford Tap | Mount Holly, NJ | 191 | H-H' |
| 31-38515 | Easton Tap | Medford Lakes, NJ | 900 | H-H', F-F' |
| 31-40288 | Easton Tap | Medford Lakes, NJ | 515 | H-H' |
| 31-48804 | Mount Laurel Tap | Moorestown, NJ | 310 | E-E' |
| 31-41671 | Cinnaminson Tap | Moorestown, NJ | 287 | H-H' |
| 31-05779 | Maple Shade Tap | Moorestown, NJ | 488 | H-H', D-D' |
| 31-7342 | Medford Tap | Mount Holly, NJ | 1090 | A-A |
| 32-00448 | Woodford Tap | Cherry Hill, NJ | 227 | B-B', G-G' |
| 32-00448 | Woodford Tap | Cherry Hill, NJ | 227 | B-B', G-G' |
| 32-00637 | Talbotville Tap | Medford Lakes, NJ | 381 | F-F' |
| 32-02013 | Washington Tap | Ashton, NJ | 448 | G-G' |
| 32-01525120 | Washington Tap | Jenkins, NJ | 380 | A-A, G-G' |
| 32-0152510 | Washington Tap | Ashton, NJ | 330 | A-A |
| 32-0152510 | Washington Tap | Jenkins, NJ | 290 | G-G' |
| 32-10400 | Bass River Tap | Jenkins, NJ | 248 | G-G' |
| 32-09880 | Bass River Tap | Orange Lake, NJ | 815 | B-B |
| 32-14640 | Woodford Tap | Peweesville, NJ | 110 | F-F' |
| 32-17621 | Pennington Tap | Brown Mills, NJ | 440 | F-F' |
| 32-21781 | Bass River Tap | New Greens, NJ | 193 | B-B |
| 32-21855 | Woodford Tap | Woodford, NJ | 1780 | B-B |
| 32-22005 | Woodford Tap | Brown Mills, NJ | 1018 | B-B', F-F' |
| 32-22060 | Pennington Tap | Brown Mills, NJ | 508 | F-F' |
| 32-25789 | Talbotville Tap | Indian Mills, NJ | 420 | F-F' |
| 32-27282 | Pennington Tap | Brown Mills, NJ | 244 | F-F' |
| 32-00029 | Pennington Tap | Pennington, NJ | 1165 | I-I' |
| 27-05444 50448 | Springfield Tap | Brick, PA,NJ | 284 | C-C |
| E201501346 | New Hanover Tap | New Egypt, NJ | 1099 | B-B |
| E201501347 | New Hanover Tap | Brown Mills, NJ | 1110 | B-B |

*United States Geological Survey Groundwater Site Inventory (GWSI) number.
Table 2. Identification number, location, and total depth of wells used in hydrogeologic cross-sections. Well 28-25950 is not located on hydrogeologic cross-sections D-D' and I-I' due to its close proximity to well 28-25952 but was still used in the construction of such hydrogeologic cross-sections. See figure captions.

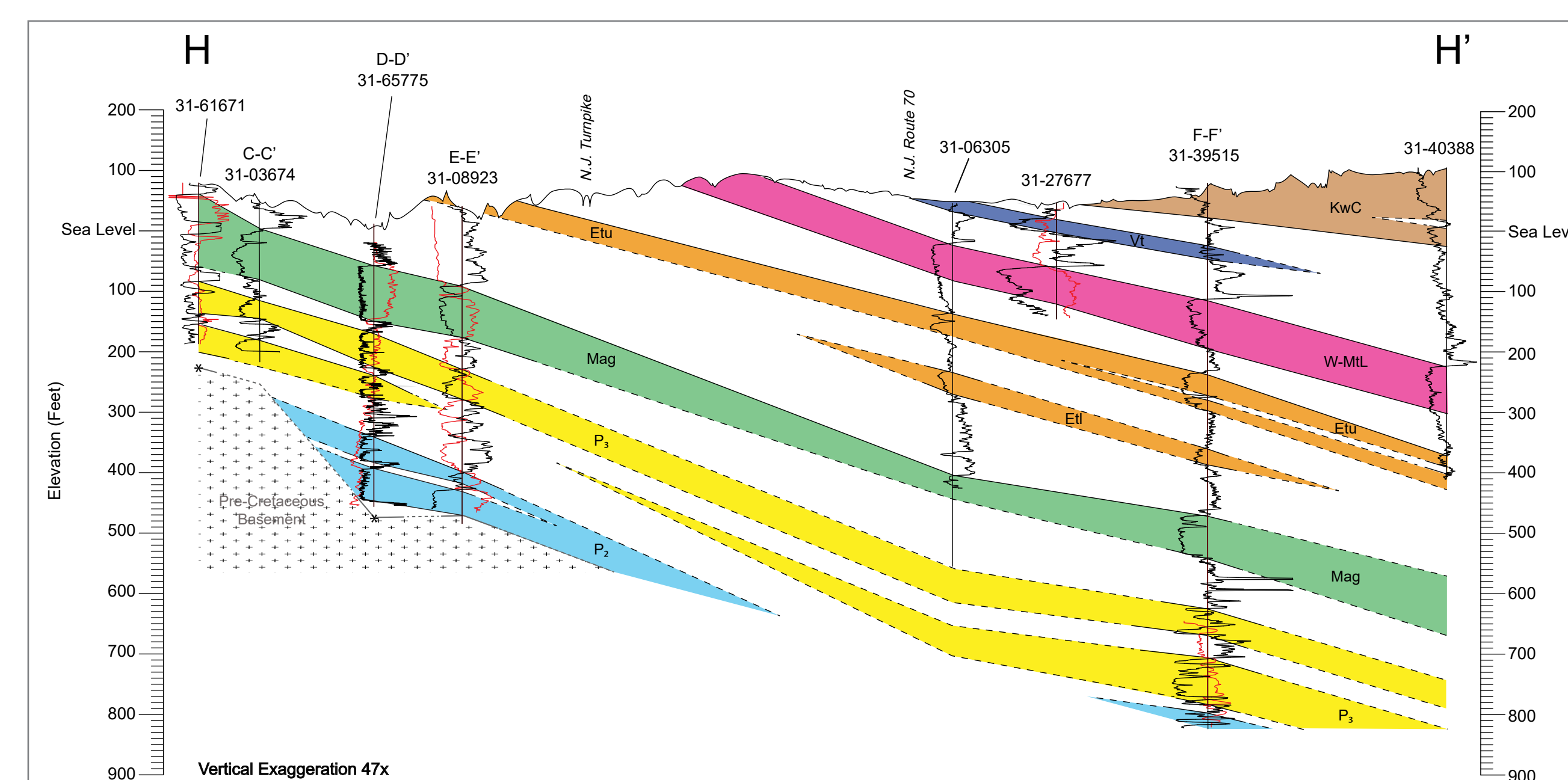


Figure 9. Hydrogeologic cross-section H-H'. Asterisk indicates depth to bedrock obtained from Volkert and others (1996).

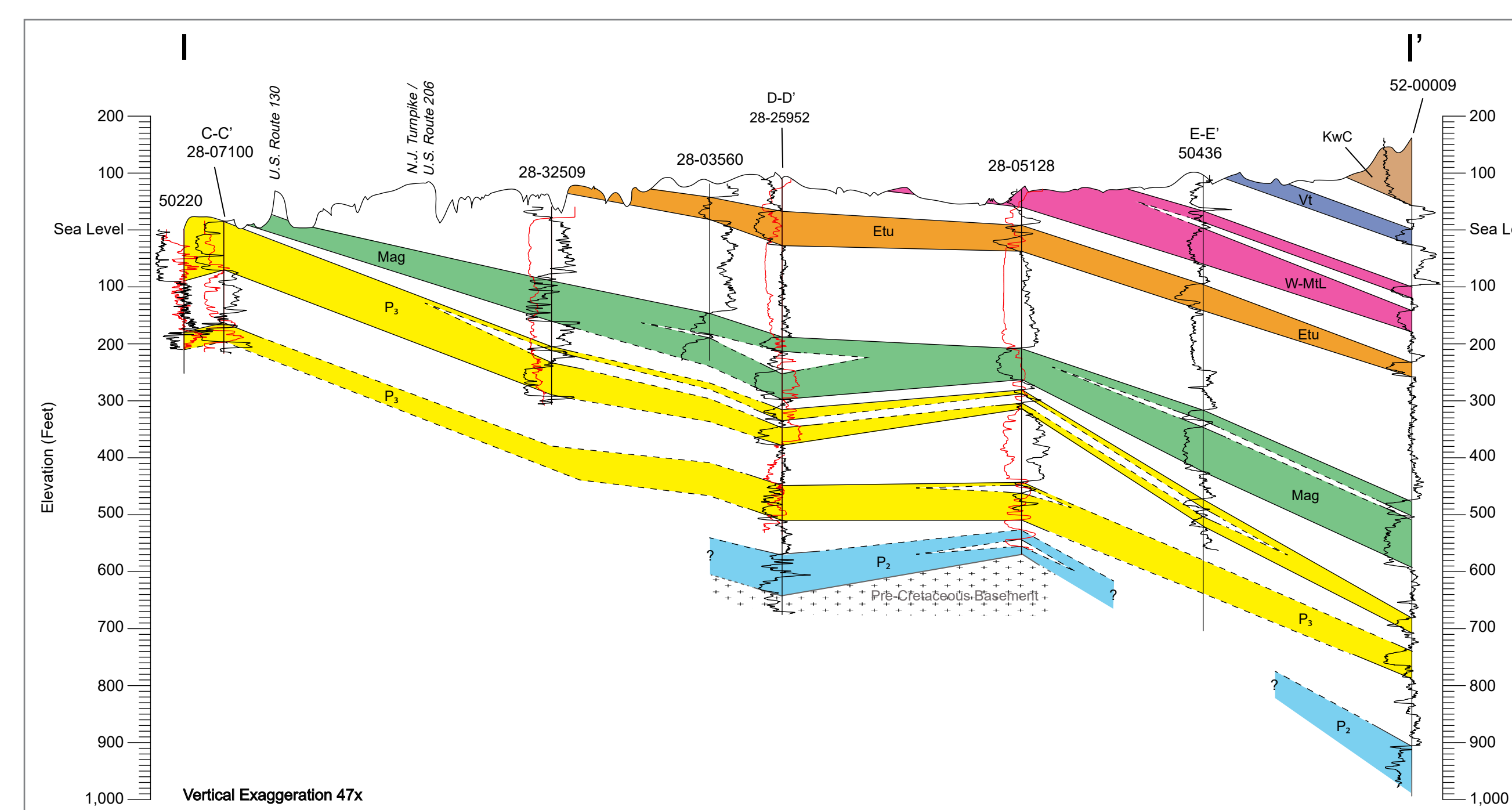


Figure 10. Hydrogeologic cross-section I-I'. Single Point Resistance log on well 28-25952 collected from well 28-25950, approximately 200 feet to the southeast.

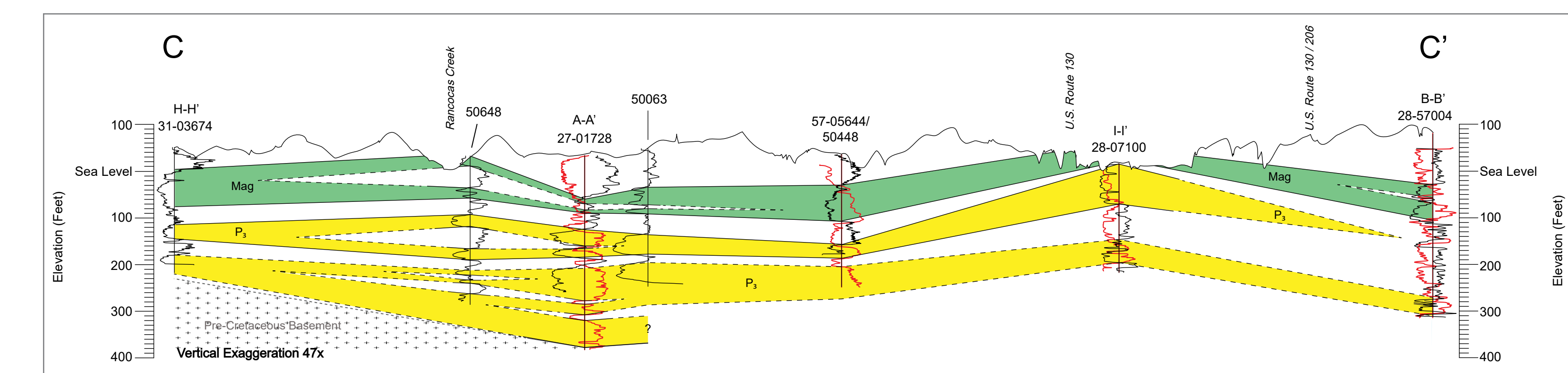


Figure 11. Hydrogeologic cross-section C-C'

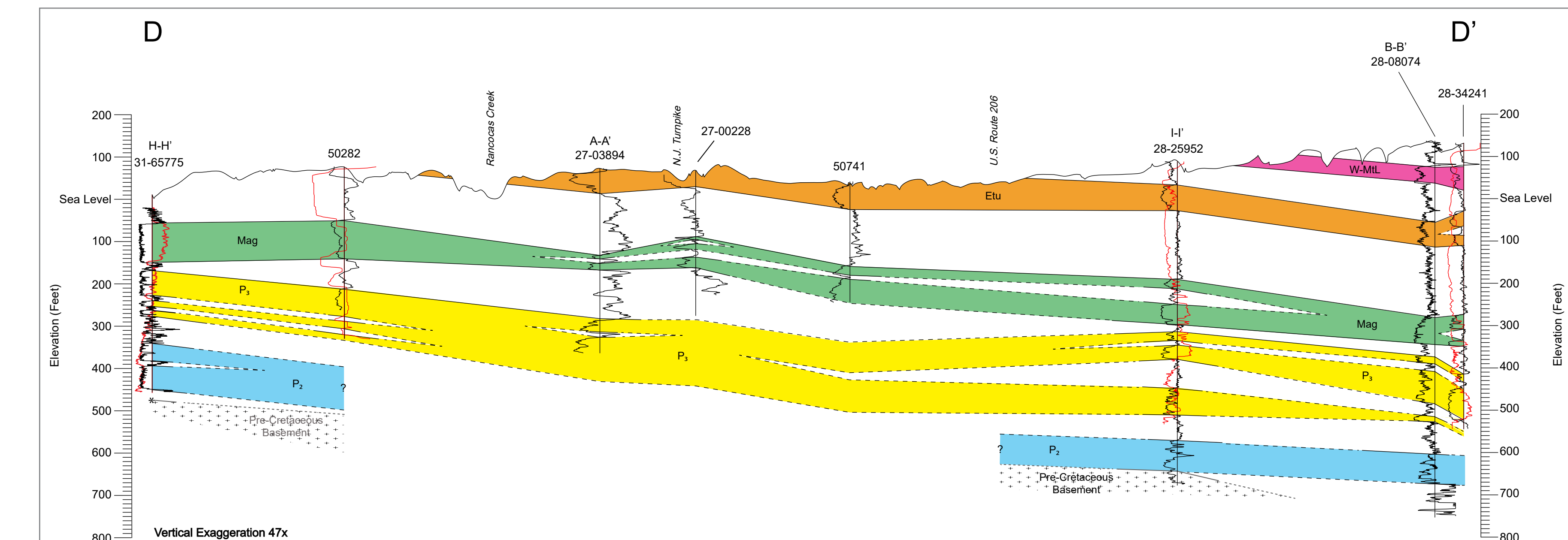


Figure 12. Hydrogeologic cross-section D-D'. Single Point Resistance log on well 28-25952 was collected from well 28-25950, approximately 200 feet to the southeast. Asterisk indicates depth to bedrock inferred from Volkert and others (1996).

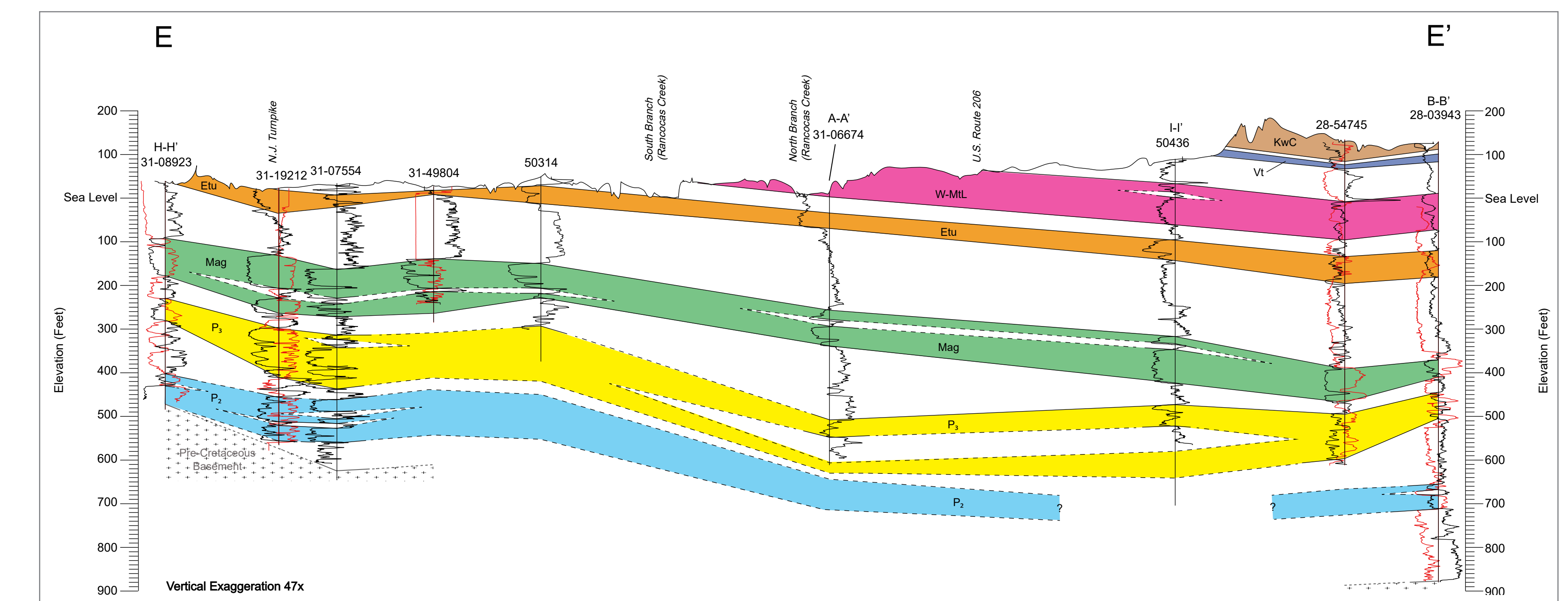


Figure 13. Hydrogeologic cross-section E-E'

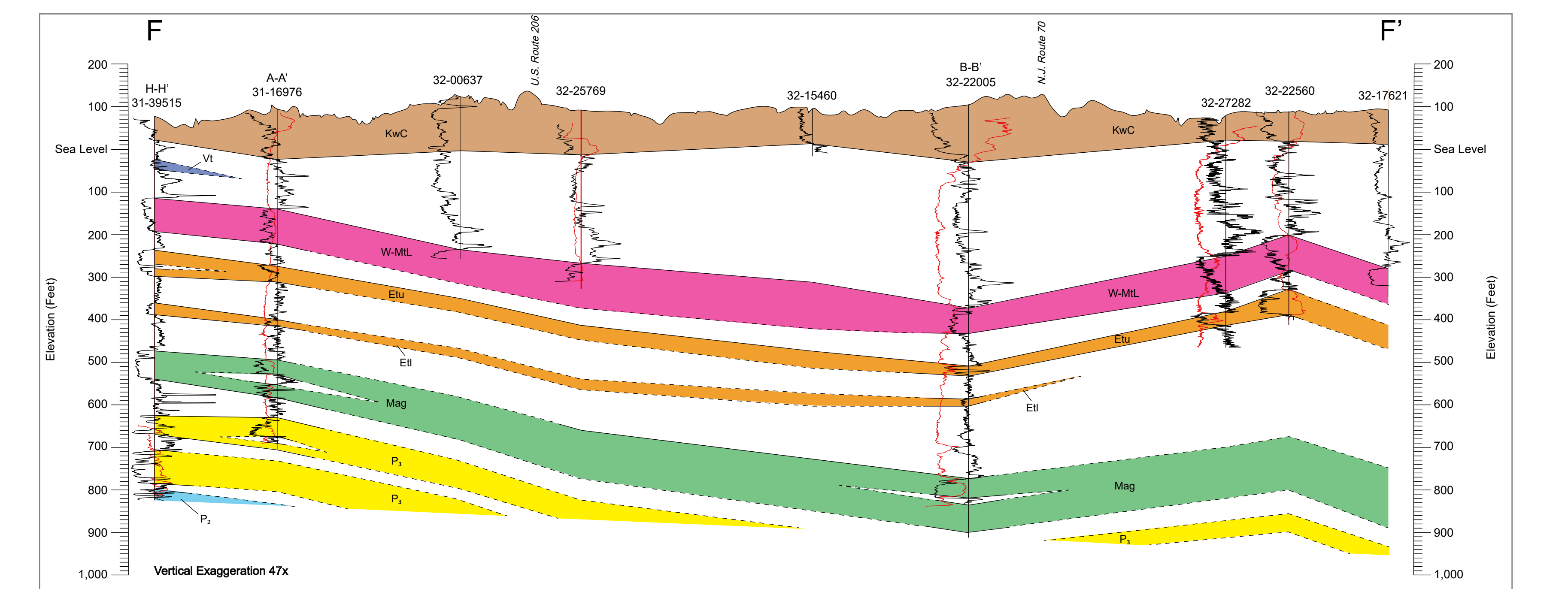


Figure 14. Hydrogeologic cross-section F-F'. Single Point Resistance log for well 31-39515 extends from 645 feet to 120 feet.

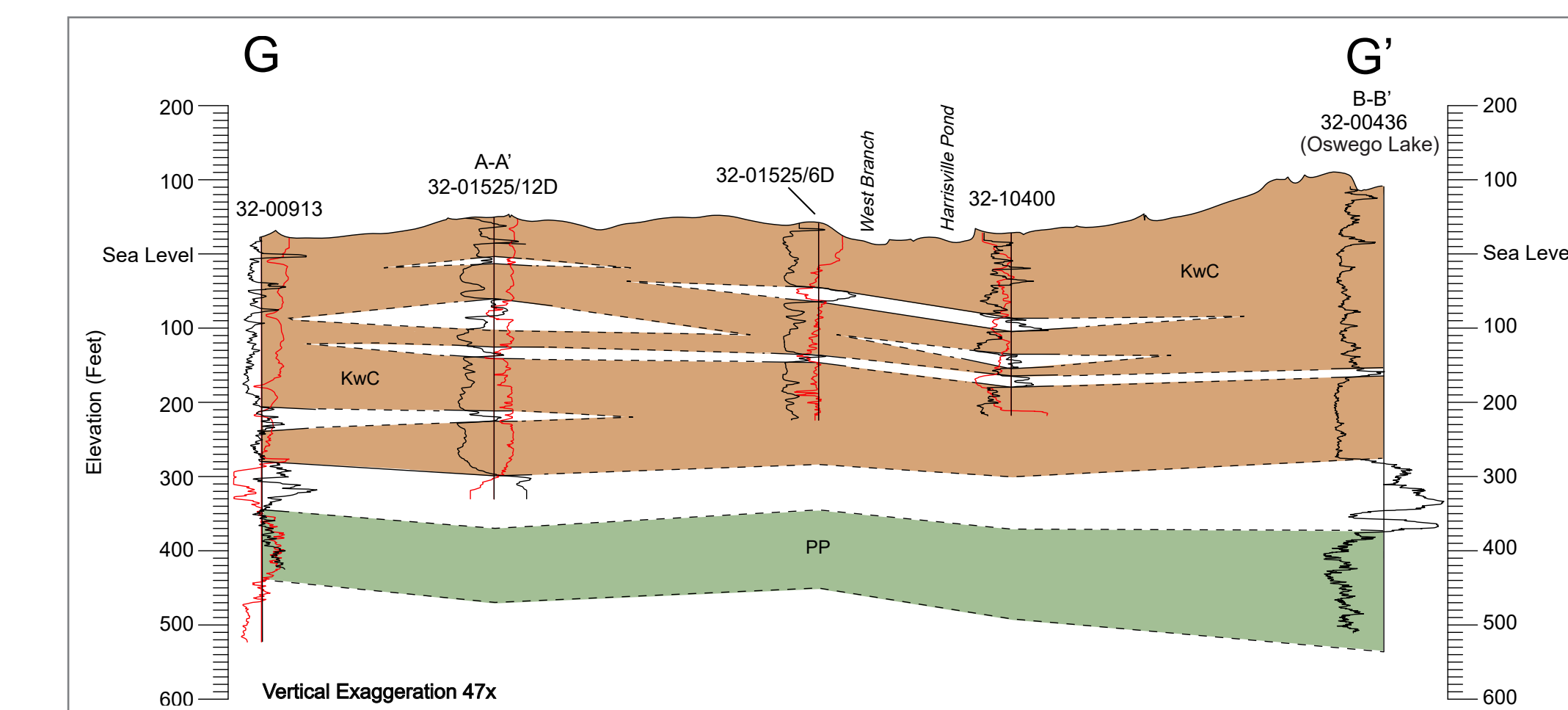


Figure 15. Hydrogeologic cross-section G-G'

FRAMEWORK AND PROPERTIES OF AQUIFERS IN BURLINGTON COUNTY, NEW JERSEY

by
Peter J. Sugarman, Alexandra R. Carone,
Yelena Stroiteleva, Ronald S. Pristas, Donald H. Monteverde, Steven E. Domber,
Rachel M. Filo, Francesca A. Rea, Zachary C. Schagrin
2018