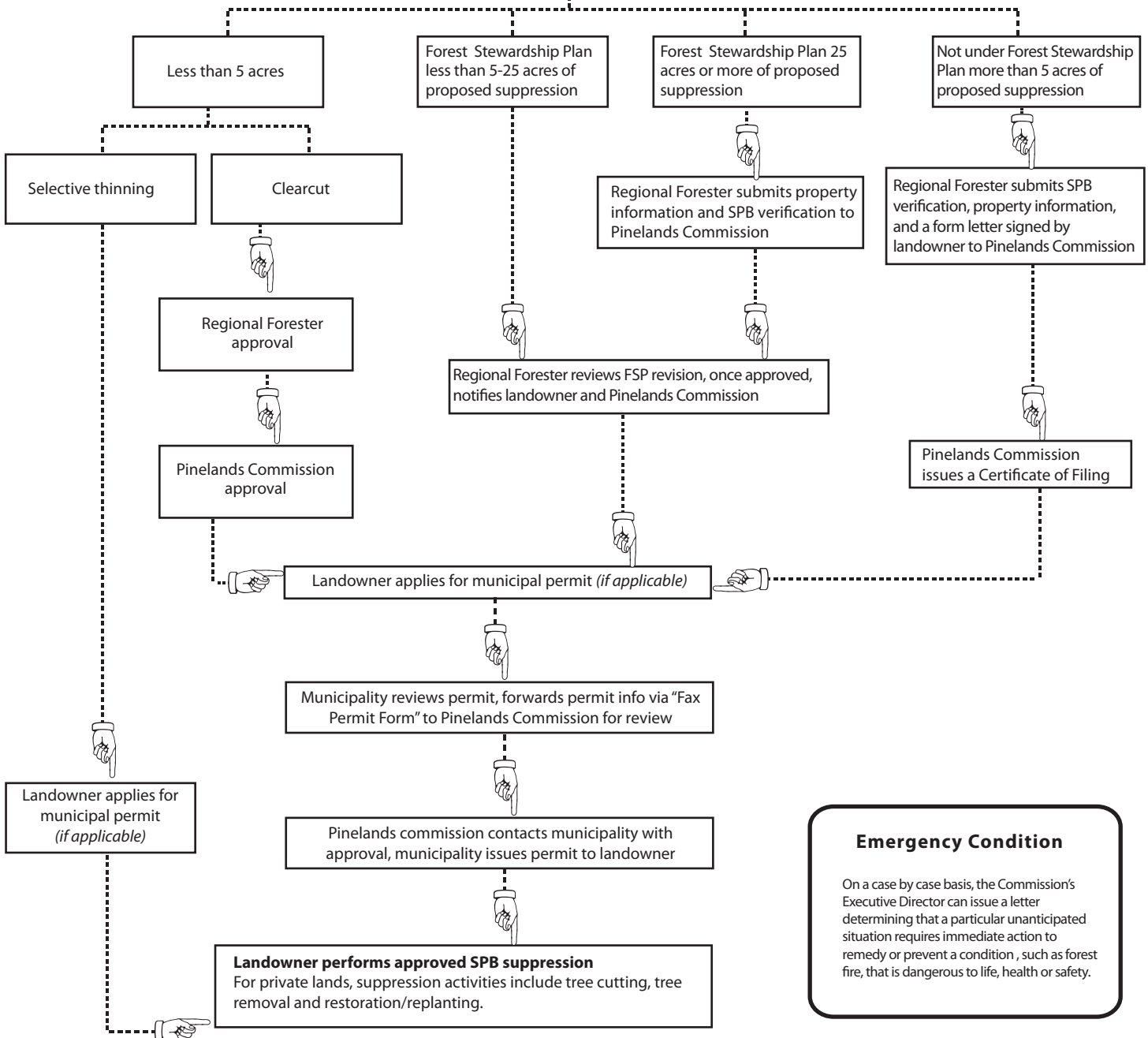


# SPB Suppression within the Pinelands Private Lands Review Process



<p>Landowner in <b>Atlantic, Camden, Cape May, Cumberland and Gloucester, Counties</b> writes proposal for SPB suppression and submits to:</p> <p>Dave Finley, Regional Forester. 5555 Atlantic Avenue, Mays Landing, NJ 08330 609.625.1124</p>	<p>Landowner in <b>Burlington and Ocean Counties</b> writes proposal for SPB suppression and submits to:</p> <p>Jim Haase, Regional Forester. Mile Marker 1, Route 72, New Lisbon, NJ 08064 609.726.1621</p>
---	--

Regional Forester receives request, verifies SPB on the property\*, and designates the situation as one of the following:  
\*May use previous records as verification



**Emergency Condition**

On a case by case basis, the Commission's Executive Director can issue a letter determining that a particular unanticipated situation requires immediate action to remedy or prevent a condition, such as forest fire, that is dangerous to life, health or safety.