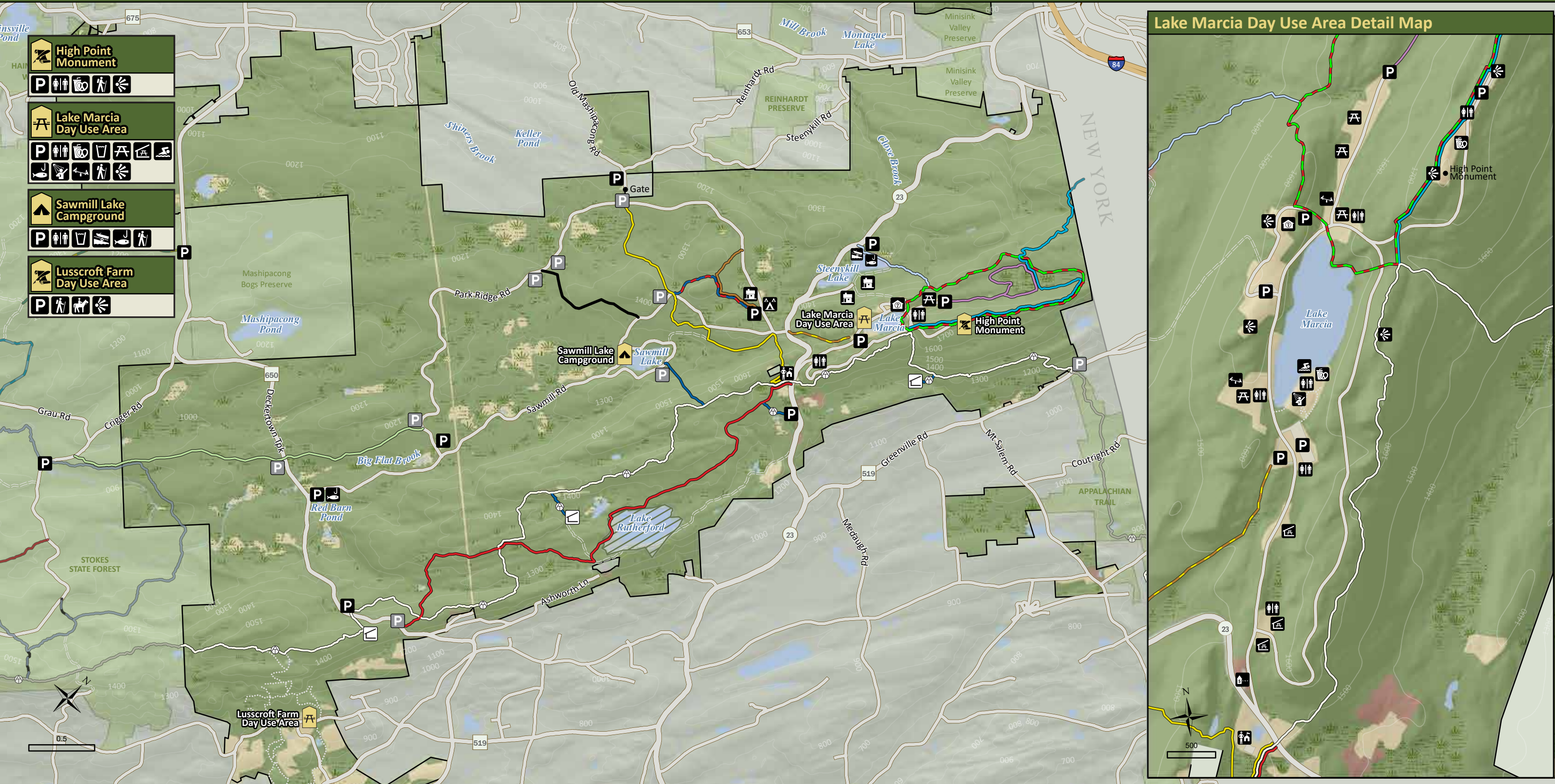


HIGH POINT State Park & New Jersey Veterans' Memorial



Open Field or Grass	Wetland	Ayers Trail (1 mi)	Monument Trail (3.5 mi)	Appalachian Trail (9.7 mi)	AT Shelter	Fishing	Park Office	Scenic View
Forest	Restricted Area	Blue Dot Trail (0.5 mi)	Old Trail (0.5 mi)	AT Connector Trail	Boat Launch	Group Campground	Picnic Area	Shower
Developed Area		Cedar Swamp Trail (2 mi)	Parker Trail (6.5 mi)	Iris Trail (4.5 mi)	Cabins	Interpretive Center	Picnic Shelter	Swimming
Water		Fuller Trail (0.85 mi)	Shawangunk Ridge Trail (3 mi)	Mashipacong Trail (2.8 mi)	Concession	Parking Lot	Playground	Visitor Contact Station
		Life Trail (0.8 mi)	Steenykill Trail (0.7 mi)		Drinking Water	Pull-off Parking	Restrooms	

INTRODUCTION

High Point, the summit of the Kittatinny Ridge, rises 1,803 feet above sea level — the highest elevation in the state of New Jersey. It is the product of continental collisions, the grinding force of glaciers, and centuries of erosion. The result is a mountain with unrivaled views of three states and a scenic landscape where uncommon plants take root, animals find refuge and people visit to sightsee, play and relax.

HISTORY

High Point became a vacation destination in 1890 when a local entrepreneur built an Adirondack-style hotel near the summit of Kittatinny Mountain. After twenty years, the hotel was purchased by brothers, Anthony and John Kuser. Wealthy businessmen, they operated the High Point Inn for one summer and planned to develop the estate into a larger resort. Instead, John sold his interest to Anthony and his wife Susie Dryden, and the mountaintop estate served as their private summer retreat for twenty years.

In 1923, the Kusers donated their High Point estate to the State of New Jersey to create a public park. Five years later, the Kusers also proposed and financed the construction of the High Point Monument. In 1923, The Olmsted Brothers, a prominent landscape architectural firm, developed a plan for the park and over the next twenty years park staff and two Civilian Conservation Corps companies built roads, lakes, trails, campsites, and made many other improvements guided by the Olmsted document.

A century later, the Kuser’s legacy of philanthropy created a public park and veteran’s memorial that is still enjoyed by thousands of people every year.

FEATURES AND ACTIVITIES

High Point Monument - The monument was built through the generosity of the Kusers and is dedicated to all New Jersey veterans. Construction began in 1928 and was completed in 1930. Visitors can climb the 291 stairs up this 220-foot structure for breathtaking views of the Pocono Mountains to the west, the Catskill Mountains to the north and the Wallkill River Valley to the southeast. The monument is faced with New Hampshire granite and local quartzite. Only the first floor is accessible for people with disabilities. Interior of the monument is open seasonally.

Dryden Kuser Natural Area - Spanning 800 acres, this natural area encompasses both an Atlantic white cedar bog and a high-elevation ridgetop, including the summit of Kittatinny Mountain (High Point). These areas are of particular interest to botanists as they include rare and uncommon plant species, including the endangered three-toothed cinquefoil, that are typically found in more northern or southern habitats. Uncommon breeding and



overwintering birds are also found, including Cooper’s hawk and white-wing crossbills. Different portions of the natural area may be reached via Cedar Swamp Trail, Monument Trail or Steenykill Trail. Trail maps and a self-guided trail booklet for the Cedar Swamp Trail are available at the park office or the interpretive center.



Swimming

The spring-fed 20-acre Lake Marcia is cool and refreshing for swimmers. Swimming is only permitted during the summer months when lifeguards are on duty. Inner tubes, rafts and other flotation devices are not permitted in the swimming area. Only U.S. Coast Guard approved life jackets are permitted. The beach area includes changing rooms, restrooms, showers, a first-aid station and a concession building where food may be purchased. Pets are not permitted on the beach.



Interpretive Center

The interpretive center is in the restored Grey Rock Inn which was built in the early 1930s to serve as the park restaurant and cafeteria. Today, this historic building hosts exhibits about the natural and cultural history of the park and is used for special events and programs. Educational programs are offered year-round in the building and throughout the park. For more information email highpointprograms@dep.nj.gov or call 973-875-1471.



High Point Cross-Country Ski Center

- During the winter months the High Point Cross-Country Ski Center operates from inside the interpretive center. Cross-country skis and snowshoes are available to rent for use on the 9.3 miles of groomed trails when natural snow cover allows. For information and trail conditions visit xcskihighpoint.com.



Camping

There are 50 tent sites with fire rings and picnic tables in a secluded setting around the 20-acre Sawmill Lake. A limited number of campsites have space for a tent trailer, but there is no waste dump station, or water or electric connections for trailers. Pit toilets that flush are within walking distance.

Group Campsites - There are two group campsites with drinking water and pit toilets. Each campsite accommodates up to 25 people.



Cabins

There are two family cabins and one group cabin. Each cabin has electricity; a furnished living room with a woodstove; a kitchen with hot and cold running water, electric stove, and refrigerator; and a bathroom with shower, toilet and sink.

Family Cabins - The family cabins are located in a secluded area on the eastern shore of Steenykill Lake. Each accommodates six people. Each cabin has three bedrooms - one room with a double bed and two rooms with twin beds. Cabins also have front porches that offer a view of the lake, picnic tables and charcoal grills.

Group Cabin - The group cabin can accommodate up to 28 people in two bunkrooms (each with its own bathroom). Picnic tables and a fire ring are located on the back patio.

Reservations for camping and cabins and the family cabins can be made at camping.nj.gov.



Picnicking

Picnicking facilities are provided in attractive, private and open settings with tables and charcoal grills. Charcoal fires must be confined to metal grills provided at the site or to grills brought by the picnickers. Ground fires are not permitted. Drinking water and restrooms are nearby. Group picnic shelters are also available and can be reserved for a fee.



Trails

With over 50 miles of trails, High Point State Park offers visitors a variety of trail options throughout the year. Designated multiuse trails are available for hiking, mountain biking, horseback riding, cross-country skiing, snowshoeing, dogsledding and snowmobiling. Trails vary in length and take visitors through unique and diverse landscapes, including an Atlantic white cedar bog, mountain ridge tops with 360-degree views, dense forests, fields and wetlands. Trail maps are available at the park office or the interpretive center.

Appalachian Trail - To the south, the trail follows the rocky ridgeline into Stokes and Worthington State Forests, offering many scenic views of the surrounding valleys and mountains. To the north, the trail drops off the ridge through a hemlock gorge into former agricultural fields with a view of the High Point Monument in the distance.



Boating

Boats may be launched at specific locations at Sawmill Lake and Steenykill Lake. Boating is permitted subject to New Jersey's boating regulations and NJ State Park Service rules. Check with the park office for launch sites. A U.S. Coast Guard approved personal flotation device (PFD) is required for each person on board a watercraft. Power boats are limited to electric motors only.



Fishing & Hunting

Excellent fishing can be found in High Point's lakes and streams, which are stocked with trout, large-mouth bass and other species. Fishing is subject to NJDEP Fish & Wildlife regulations at dep.nj.gov/njfw/.

Hunting is permitted in designated areas within the park and is subject to NJDEP Fish & Wildlife regulations. Hunting is not permitted in New Jersey state parks and forests on Sundays.



Access For People With Disabilities

High Point State Park is partially accessible for people with disabilities. Please contact the park office for further information regarding disability access. Text telephone (TTY) users, call the NJ Relay & CapTel Service at 711 or 1-800-852-7897 for English or 1-866-658-7714 for Spanish.



Be Bear Aware

Black bears are found throughout New Jersey. Do not approach or attract bears by making food available. Feeding bears is dangerous and illegal. Never run from a bear! To report an aggressive bear, call 1-877-WARN-DEP (1-877-927-6337) immediately. Please report any damage or nuisance behavior to the park office. Visit the NJDEP Fish & Wildlife at dep.nj.gov/njfw/ for additional information on bear safety.



Pets

Pets must always be on a leash no longer than six feet in length and under the control of the owner at all times. Please clean up after your pets and take the waste with you. Pets are not permitted in the campground.



Keep It Clean and Green

Bring a bag or two and carry your trash out with you. Trash cans are not provided. Don't forget to recycle!

NOT PERMITTED

ATVs, alcoholic beverages, drones, smoking and vaping* are NOT permitted in this park.



*Smoking and vaping permitted only inside your personal vehicle.

To report an emergency or suspicious activity, call 1-877-WARN-DEP (1-877-927-6337) or 911.



HIGH POINT STATE PARK & NEW JERSEY VETERANS' MEMORIAL
1480 State Route 23
Sussex, NJ 07461
973-875-4800

Directions: Take Route 206 north to the intersection of 206, 15 and 565. Stay straight onto County Route 565. Proceed to Sussex and turn left onto 23 North which will take you to the park entrance, about 7 miles north of Sussex.



STATEPARKS.NJ.GOV



FACEBOOK.COM/NEWJERSEYSTATEPARKS



@NEWJERSEYSTATEPARKS



State of New Jersey
Department of Environmental Protection
State Parks, Forests & Historic Sites
State Park Service



High Point
STATE PARK

& NEW JERSEY VETERANS' MEMORIAL

