



**New Jersey Conservation**  
FOUNDATION







# Batona Trail Re-route

## Franklin Parker Preserve

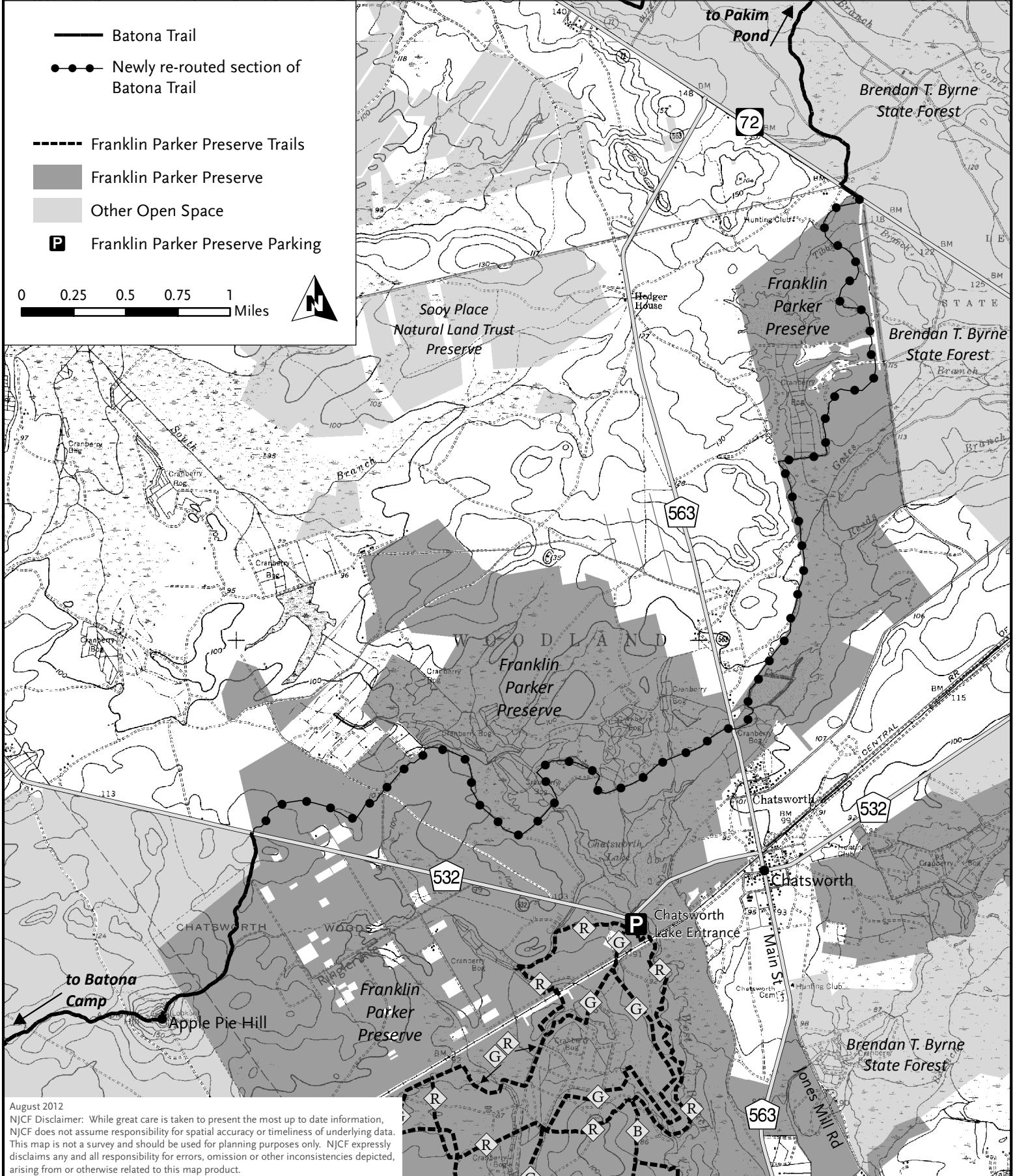
9,400 Acres in Woodland & Tabernacle Townships, Burlington County

A New Jersey Conservation Foundation Preserve • Bamboo Brook, 170 Longview Road, Far Hills, NJ 07931

1 (888) LANDSAVE (526-3728) • [www.njconservation.org](http://www.njconservation.org)

-  Batona Trail
-  Newly re-routed section of Batona Trail
-  Franklin Parker Preserve Trails
-  Franklin Parker Preserve
-  Other Open Space
-  Franklin Parker Preserve Parking

0 0.25 0.5 0.75 1 Miles



August 2012  
 NJCF Disclaimer: While great care is taken to present the most up to date information, NJCF does not assume responsibility for spatial accuracy or timeliness of underlying data. This map is not a survey and should be used for planning purposes only. NJCF expressly disclaims any and all responsibility for errors, omission or other inconsistencies depicted, arising from or otherwise related to this map product.