



NJ Department of Transportation

Transit Village Initiative

The Transit Village Initiative

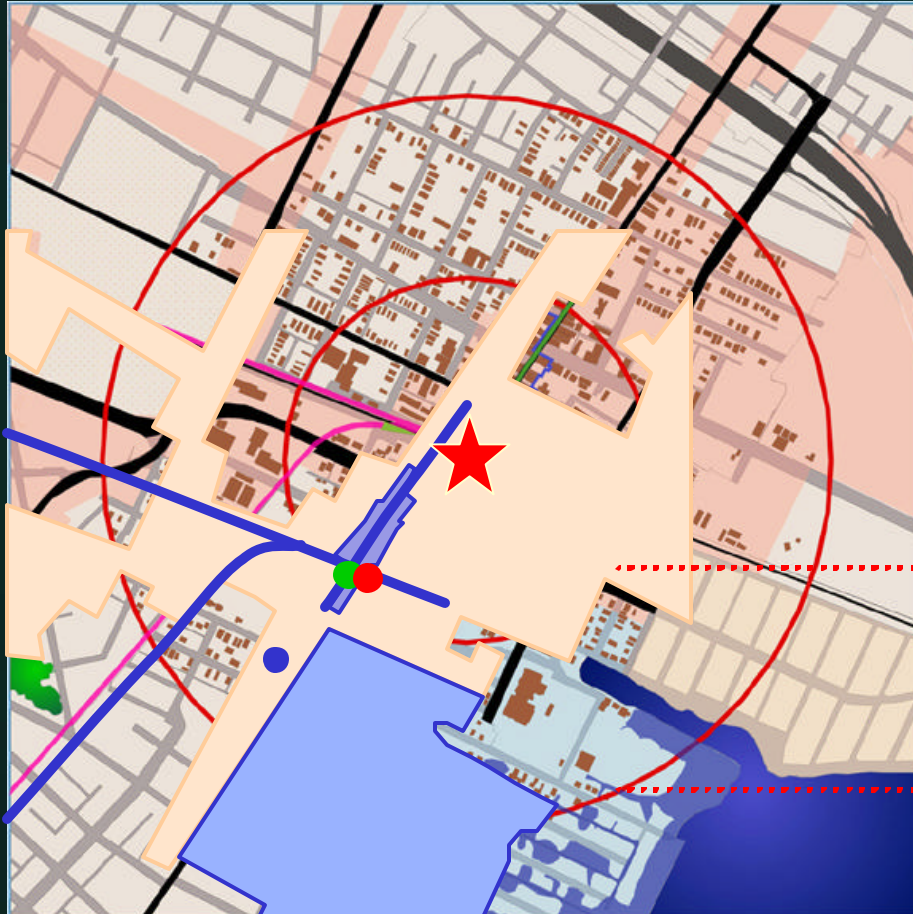
A Partnership of 10 State agencies:

- **DOT**
- **NJ Transit**
- **OSG**
- **EDA**
- **Commerce**
- **DCA**
- **HMFA**
- **DEP**
- **NJRA**
- **NJ Arts Council**

BENEFITS:

- State commitment to your vision
- Coordination between state agencies
- Priority funding
- Technical and planning assistance
- Access to \$1 million Transit Village funding

A Transit Village is the area...



5 minute walk

10 minute walk

CRITERIA

for
Transit Village Designation

Must have a transit stop

- Train
- Bus
- Ferry
- Light rail



**Opportunity
for
redevelopment**

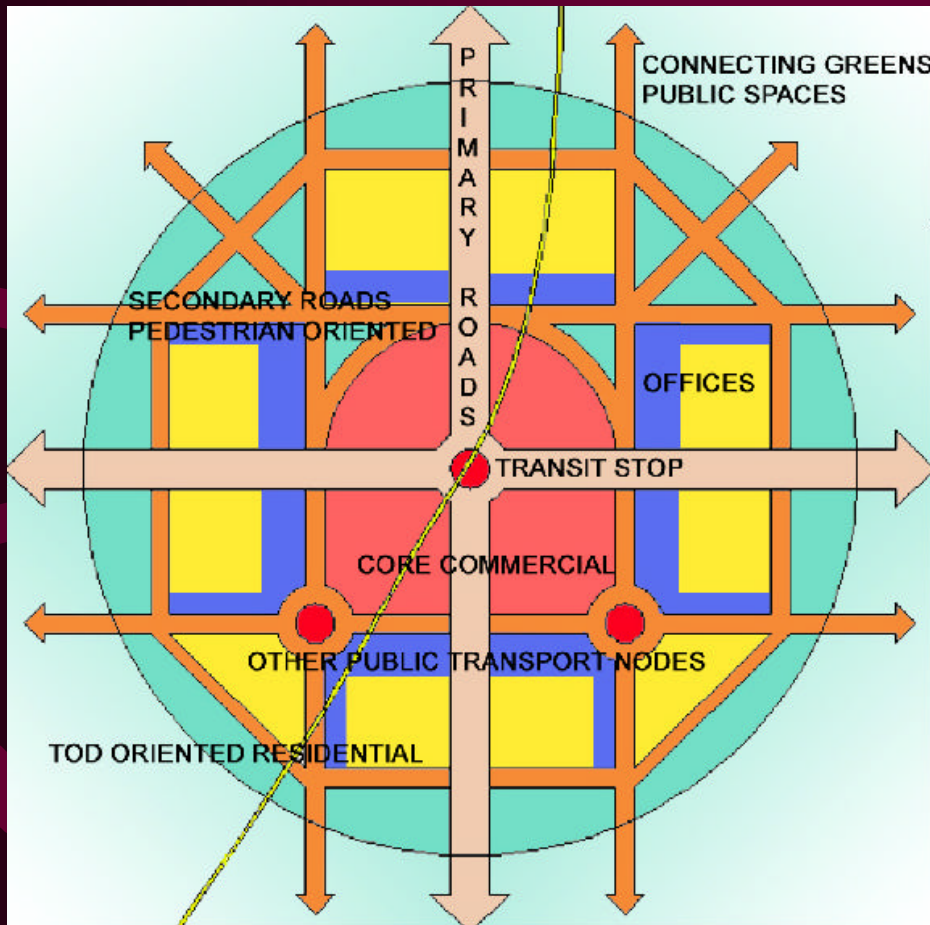
Opportunity for redevelopment



Opportunity for redevelopment



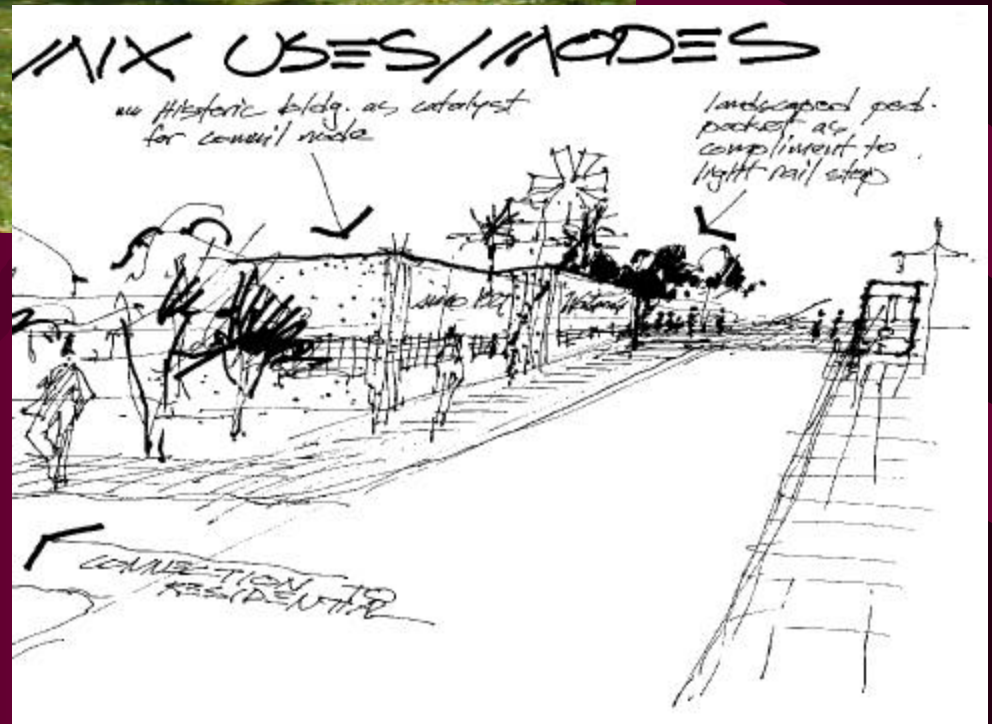
Adopted plan for compact, mixed-use development



- Zoning
- Redevelopment plan
- Master plan
- Overlay zone



***Promote
mixed-uses...**





****Buildings
oriented
to the
pedestrian***



****Compact development....***



...not sprawling



**** Buildings oriented to the street...***



...not to parking lots



****Parking in back ...***



...not in front



****Eliminate auto-dependent uses***

Strong residential component



Strong residential component



Strong residential component



Ready-to-go projects



Ready-to-go projects



**Pedestrian
friendly**



Pedestrian friendly



Pedestrian friendly



Pedestrian friendly



Pedestrian friendly



Pedestrian friendly



Pedestrian friendly



**Station
plaza
with
room to
gather**



Maximize the appeal of transit



**THE METUCHEN CONCIERGE CO.
DIRECTORY**

BLACK BELT INSTITUTE
BOYT DRUGS
BRASS LANTERN
CENTURY 21 APEX
CLARION HOTEL & TOWERS
COLDWELL BANKER
FIRST STEP COUNSELING
FUJI SUSHI
GEORGE'S
MARIANNA'S
METUCHEN SAVINGS BANK
NANN AGENCY
NEW PEARL
PRUDENTIAL NJ PROPERTIES
RE MAX HOMETOWN
SANTO'S
SILVIA'S
VATICANO SHOE
WERNIK'S PHARMACY
MAILBOXES ETC
BUTTERY BAKE SHOPPE

**WELCOME
MAILBOXES ETC**

**SERVICES
DRY CLEANING
RESTAURANTS
SHOE REPAIR
REALTOR
PRESCRIPTIONS
COUNSELING
TAILORING
SHIPPING
BAKED GOODS**

HAVE YOU LOST
SOMETHING?

WE MIGHT HAVE IT!

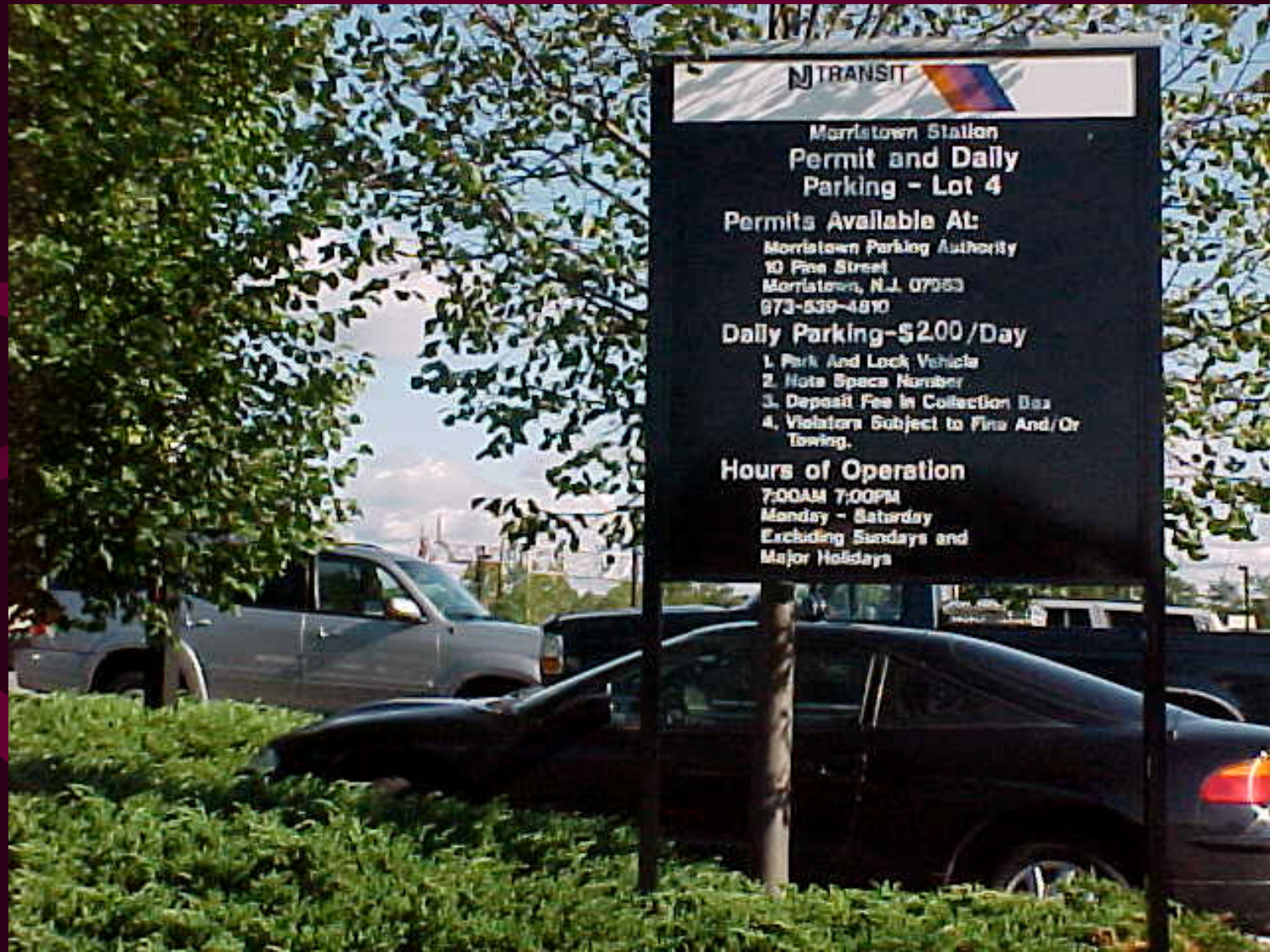
THE METUCHEN CONCIERGE
COMPANY

**HOURS
6:30 - 9:30 AM**

**PICK UP
WEST BOUND 4 - 8 PM**

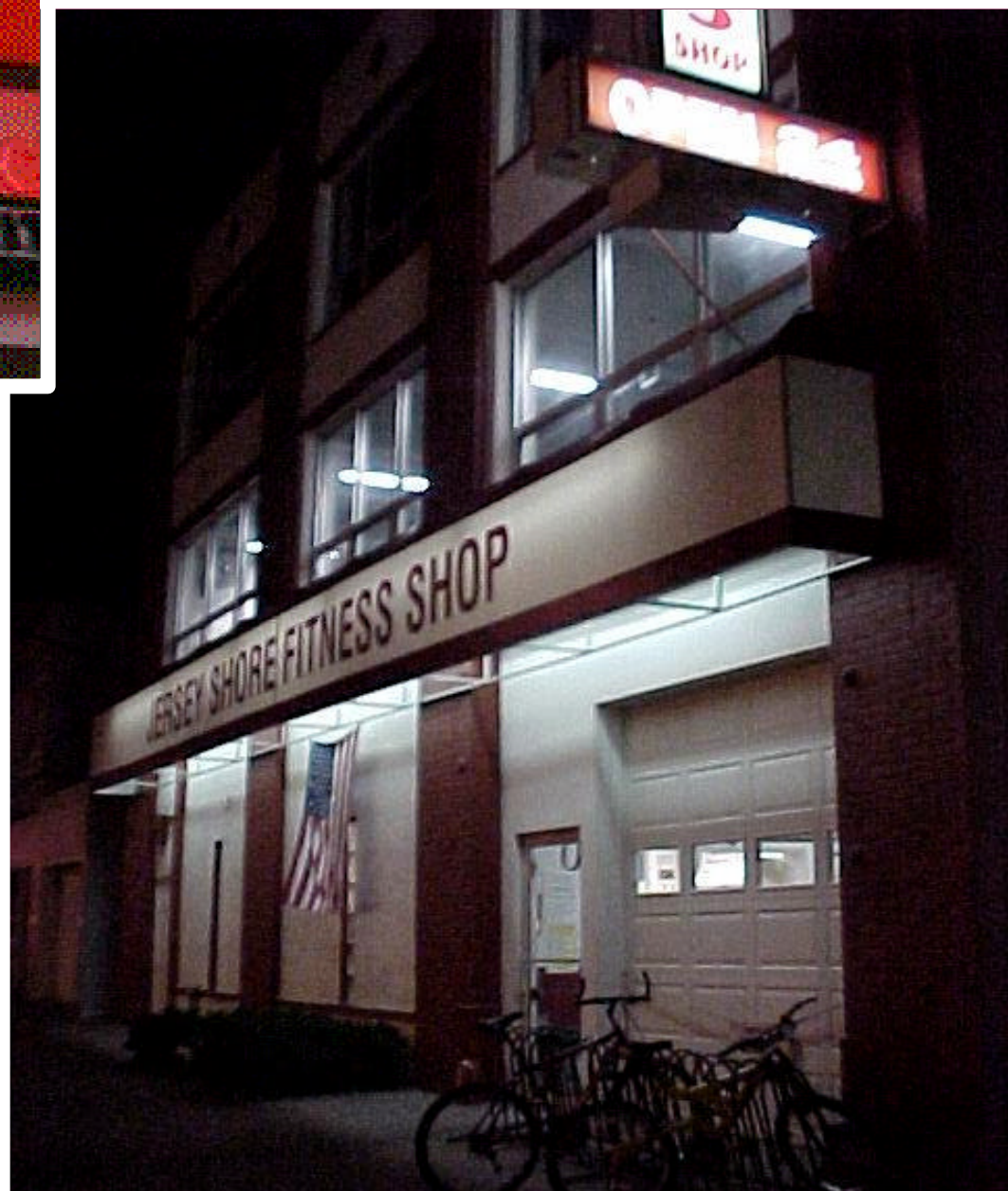
**Maximize
the appeal
of transit**

Commuter parking for residents and non-residents





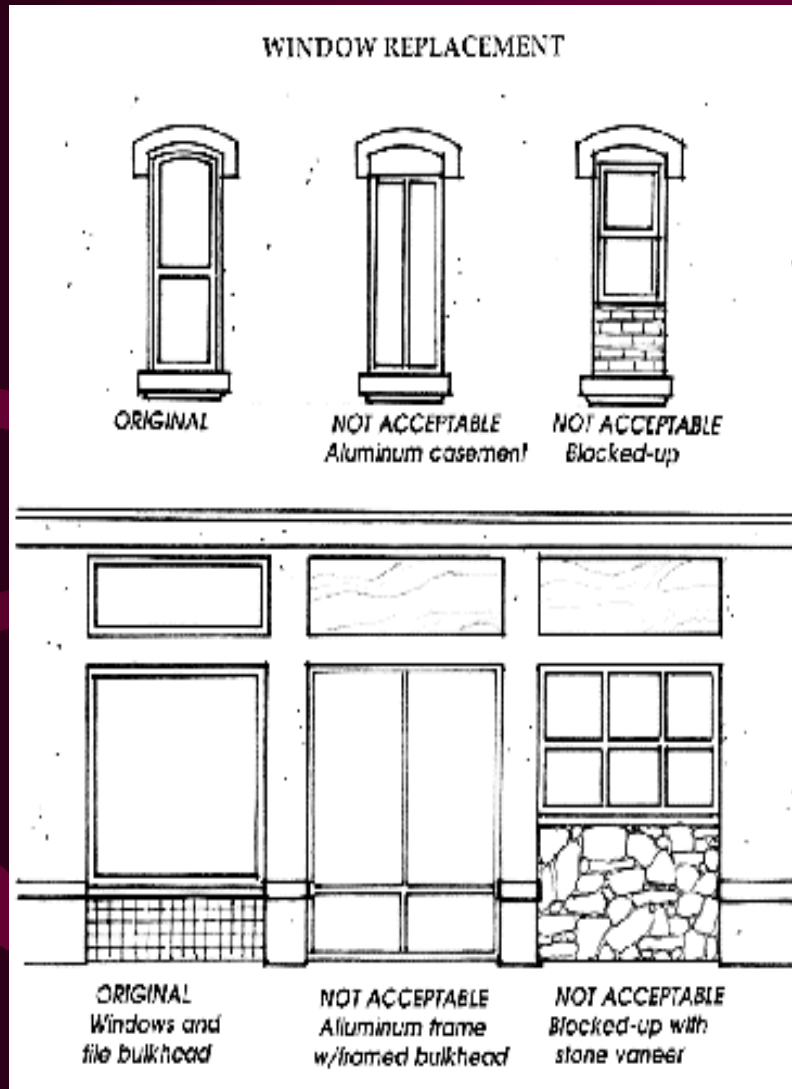
**24-hour
station
activity**



Preserve historic character

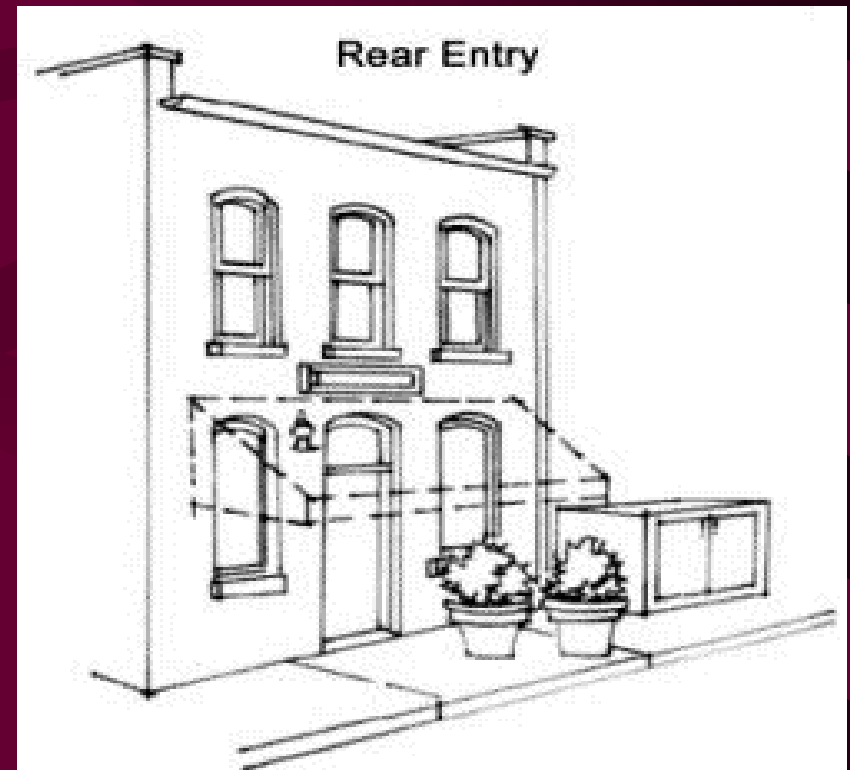


Preserve historic character

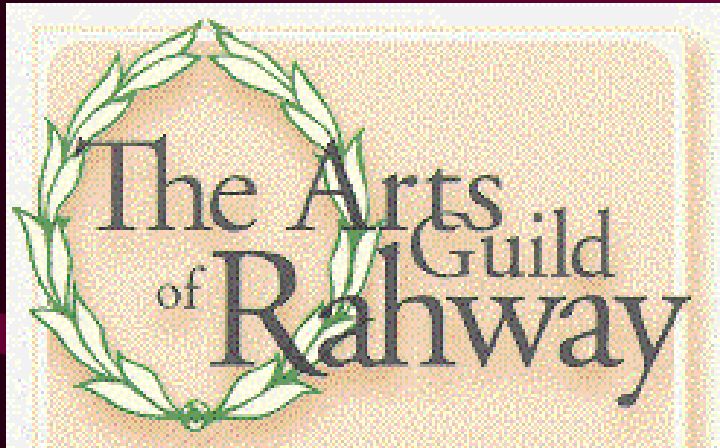


4. Awning Signs -

An awning is a roof-like covering or shelter, which is usually constructed of canvas or other fabric extending over a pedestrian walkway. Awnings provide shelter from



Support local arts & culture



The **ARTS GUILD OF RAHWAY** is a non-profit center for the arts and culture located in downtown Rahway. Our headquarters at 1670 Irving Street at Seminary Avenue is the original Rahway Library, a building rich in history and an ideal site for the arts to flourish. Founded in 1997, the Guild has developed a beautiful 1200 sq ft art gallery housing



Willing to grow in jobs, housing & population



The 8 Designated Transit Villages:

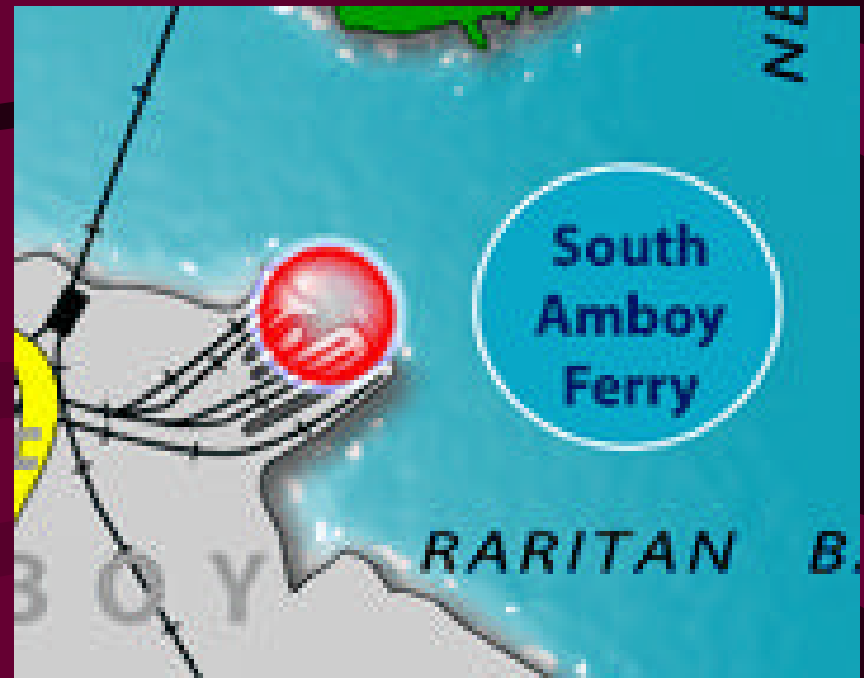
- **Metuchen**
- **Rahway**
- **Riverside**
- **Pleasantville**
- **Rutherford**
- **South Amboy**
- **South Orange**
- **Morristown**



Transit Village Investments in Riverside's redevelopment area

- Visioning / Planning study (funded by NJDOT)
- Marketing study (funded by NJ Transit)
- Phase I study (funded by NJDEP)
- Streetscape improvements (funded by NJDOT)
- Passive Recreation (County & Green Acres)

Transit Village Investments in South Amboy



- \$16.5 million for a ferry terminal (NJDOT)
- \$7.7 million for an inter-modal station (NJ Transit)
- Smart growth planning grant (funded by DCA)
- Waterfront park & Promenade (County)

*Will your municipality
be the next Transit Village?*

