

# Station plaza with room to gather



# Maximize the appeal of transit





**THE METUCHEN CONCIERGE CO.  
DIRECTORY**

BLACK BELT INSTITUTE  
BOYT DRUGS  
BRASS LANTERN  
CENTURY 21 APEX  
CLARION HOTEL & TOWERS  
COLDWELL BANKER  
FIRST STEP COUNSELING  
FUJI SUSHI  
GEORGE'S  
MARIANNA'S  
METUCHEN SAVINGS BANK  
NANN AGENCY  
NEW PEARL  
PRUDENTIAL NJ PROPERTIES  
RE MAX HOMETOWN  
SANTO'S  
SILVIA'S  
VATICANO SHOE  
WERNIK'S PHARMACY  
MAILBOXES ETC  
BUTTERY BAKE SHOPPE

**WELCOME  
MAILBOXES ETC**

**SERVICES  
DRY CLEANING  
RESTAURANTS  
SHOE REPAIR  
REALTOR  
PRESCRIPTIONS  
COUNSELING  
TAILORING  
SHIPPING  
BAKED GOODS**

HAVE YOU LOST  
SOMETHING?

WE MIGHT HAVE IT!

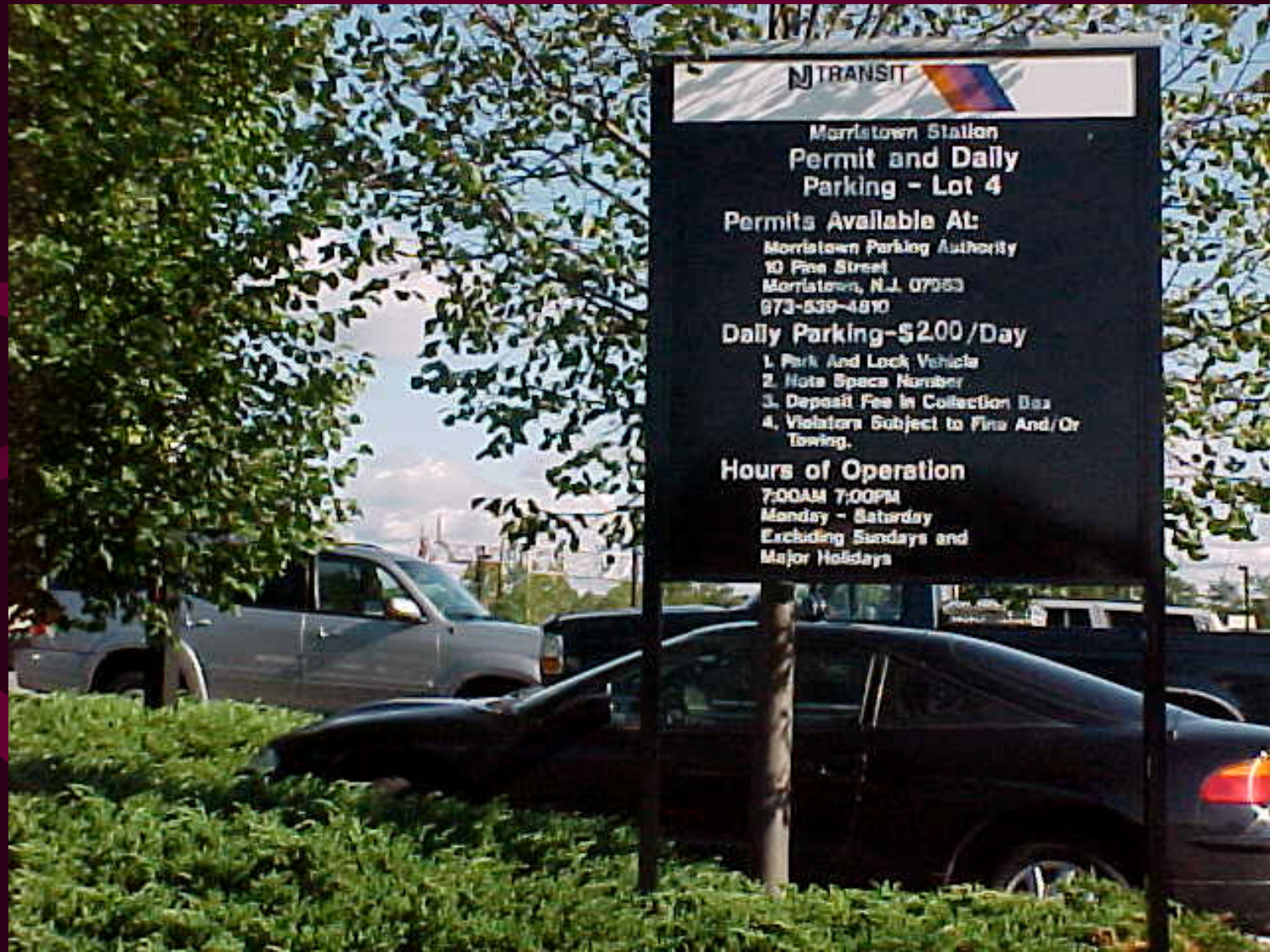
THE METUCHEN CONCIERGE  
COMPANY

**HOURS  
6:30 - 9:30 AM**

**PICK UP  
WEST BOUND 4 - 8 PM**

**Maximize  
the appeal  
of transit**

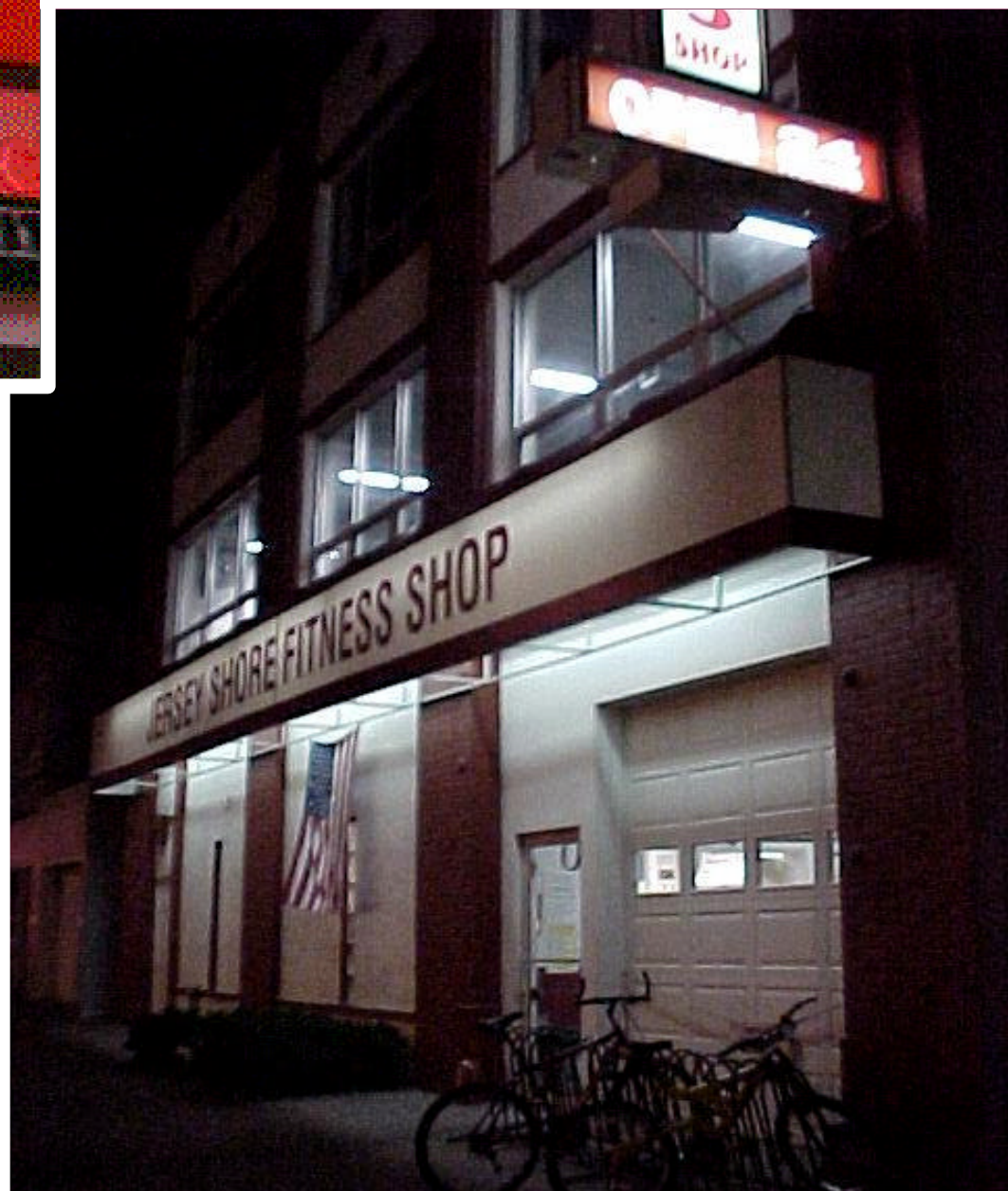
# Commuter parking for residents and non-residents







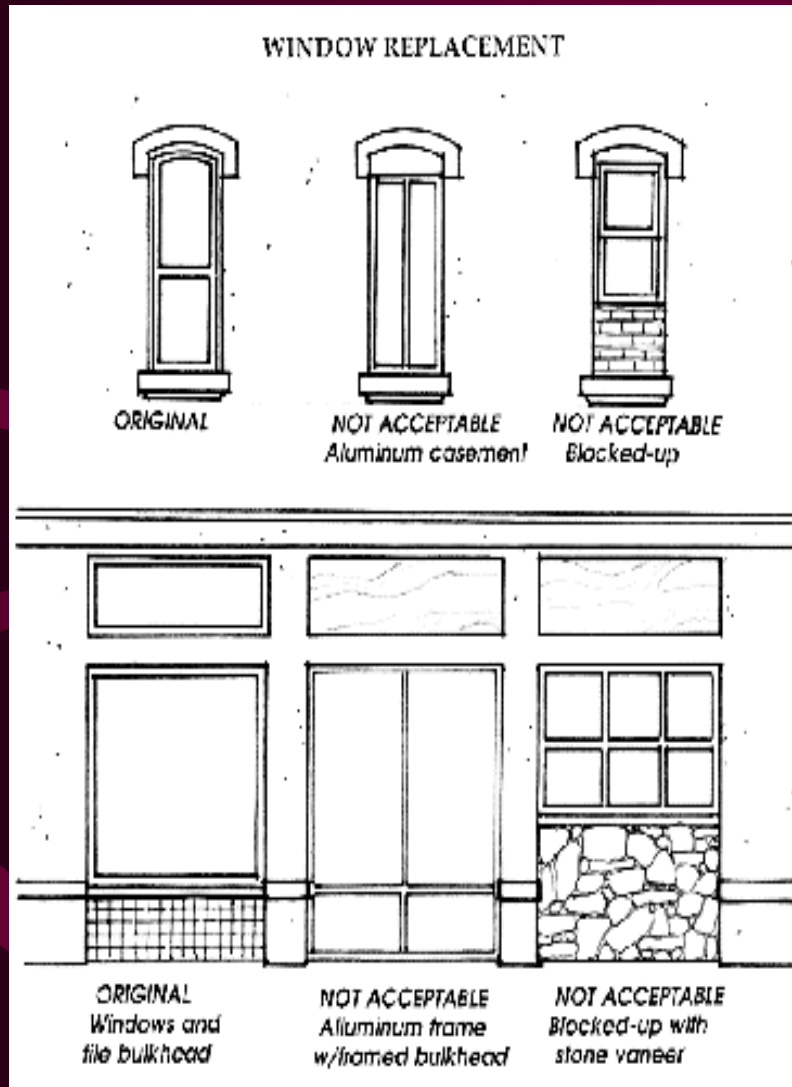
**24-hour  
station  
activity**



# Preserve historic character

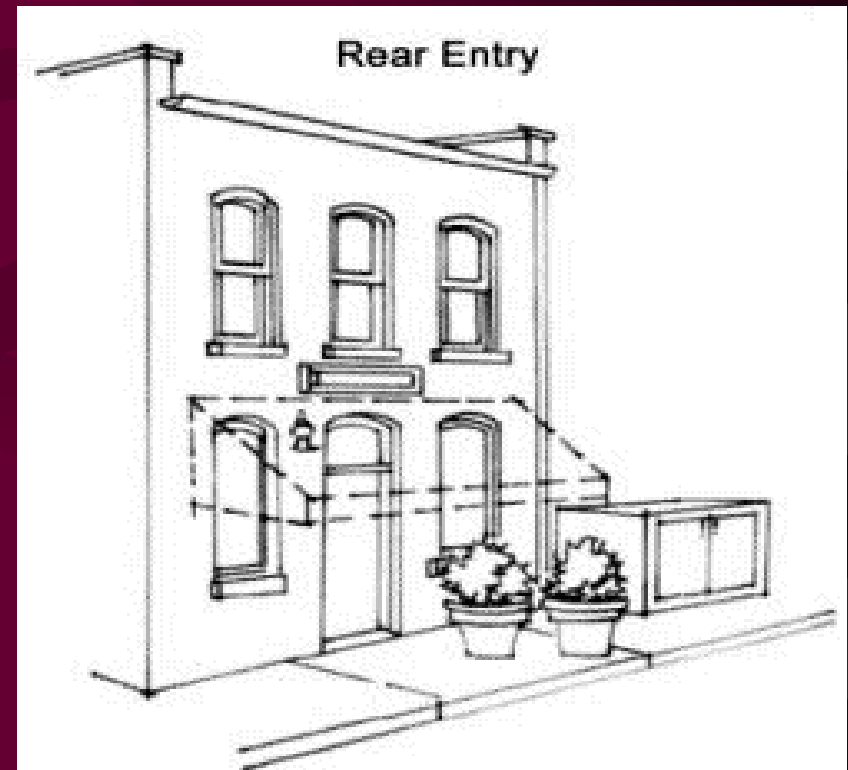


# Preserve historic character



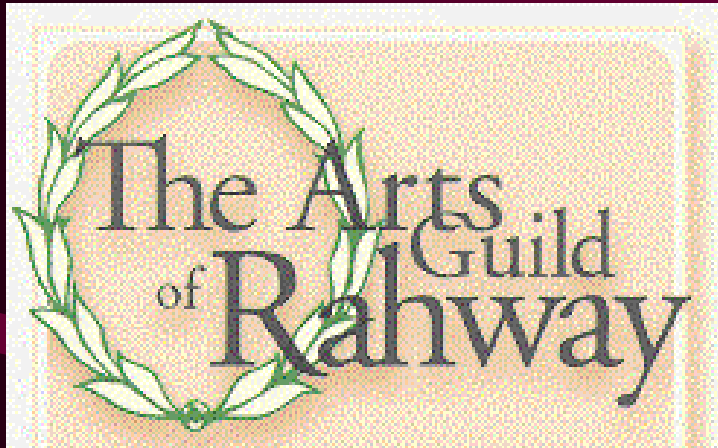
## 4. Awning Signs -

An awning is a roof-like covering or shelter, which is usually constructed of canvas or other fabric extending over a pedestrian walkway. Awnings provide shelter from





# Support local arts & culture



The **ARTS GUILD OF RAHWAY** is a non-profit center for the arts and culture located in downtown Rahway. Our headquarters at 1670 Irving Street at Seminary Avenue is the original Rahway Library, a building rich in history and an ideal site for the arts to flourish. Founded in 1997, the Guild has developed a beautiful 1200 sq ft art gallery housing





# Willing to grow in jobs, housing & population



# **The 8 Designated Transit Villages:**

- **Metuchen**
- **Rahway**
- **Riverside**
- **Pleasantville**
- **Rutherford**
- **South Amboy**
- **South Orange**
- **Morristown**

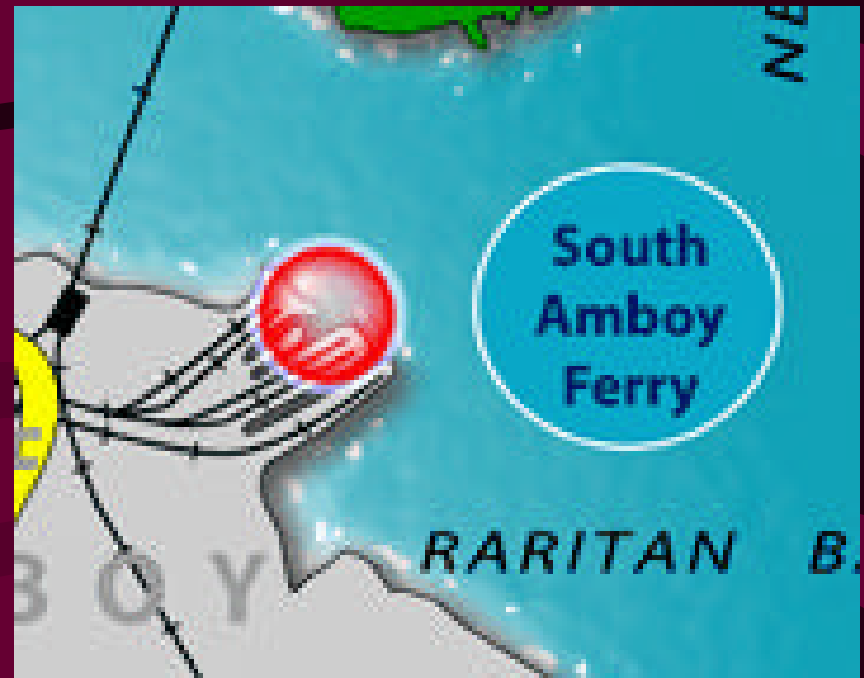




## **Transit Village Investments in Riverside's redevelopment area**

- Visioning / Planning study (funded by NJDOT)
- Marketing study (funded by NJ Transit )
- Phase I study (funded by NJDEP)
- Streetscape improvements (funded by NJDOT)
- Passive Recreation (County & Green Acres)

# Transit Village Investments in South Amboy



- \$16.5 million for a ferry terminal (NJDOT)
- \$7.7 million for an inter-modal station (NJ Transit )
- Smart growth planning grant (funded by DCA)
- Waterfront park & Promenade (County)



*Will your municipality  
be the next Transit Village?*

