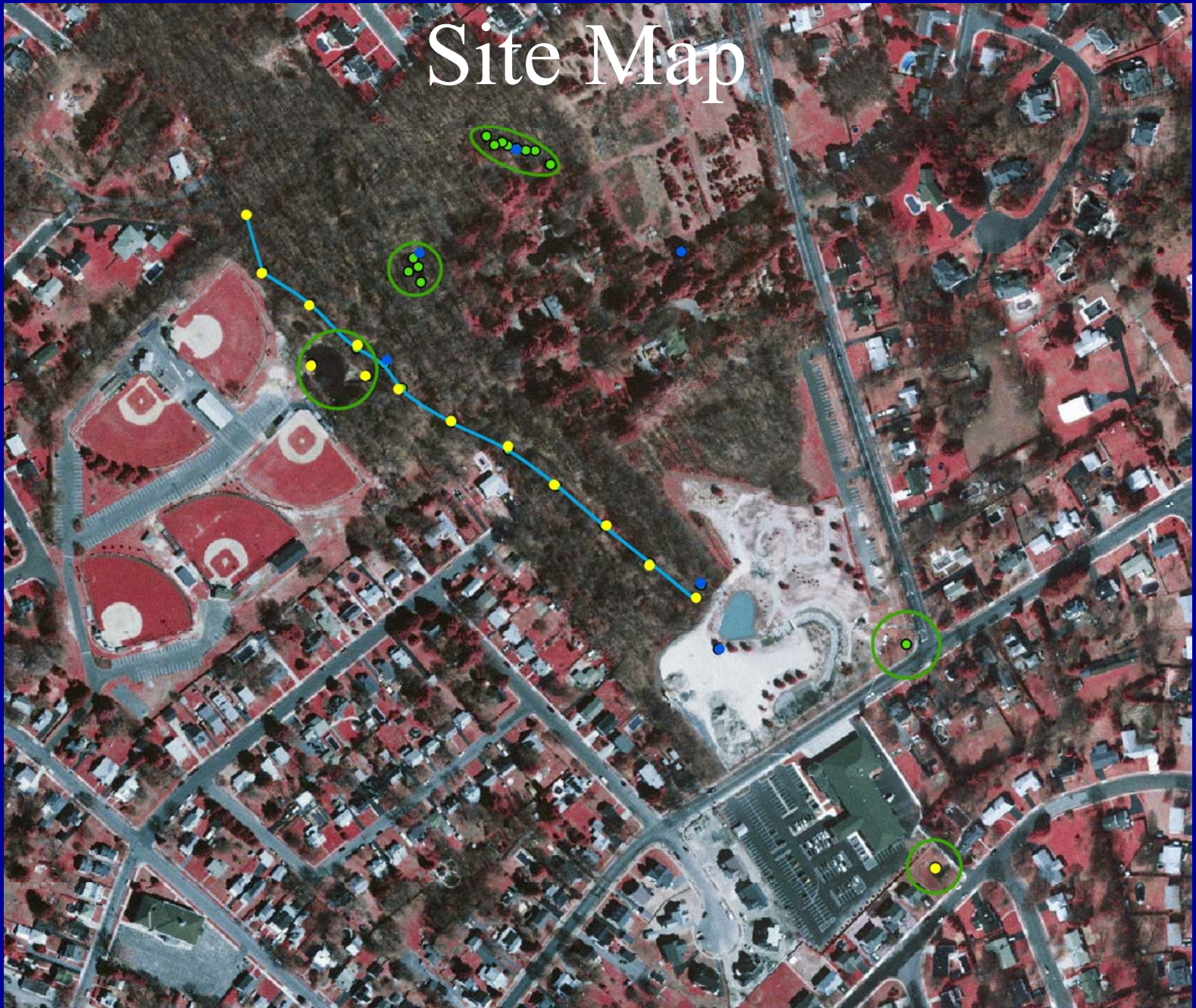




NJDEP Presentation of Results  
for Mercer Rubber  
Off-Site Investigation  
January 2007

# Site Map



- August 2006 - Draft Public Health Assessment submitted for public comment. Health Assessment calls for the collection of soil samples and shallow ground water sampling to evaluate the potential for vapor intrusion into residential homes.
- October 2006 - NJDEP conducts sampling efforts in the Sayen Garden property. Areas sampled include alleged dumping areas in the Gardens and the unnamed tributary of Miry Run.

# Ground Water Investigation

- 9 ground water samples collected for analysis
- Samples collected from the dumping areas, 2 irrigation wells and 3 potable wells

# Ground Water Results

- No contaminants were detected in any of the ground or drinking water samples taken
- NJDEP and NJDHSS conclude that no indoor air testing is necessary

# Soil Investigation

- 22 soil samples collected for analysis
  - Area North of Sayen House - 16 samples (8 shallow, 8 deeper)
  - Area near the skating pond - 4 shallow samples
  - 2 Background samples taken (corner of Hughes and Mercer)

# Soil Investigation - Results

- Polycyclic Aromatic Hydrocarbons (PAHs) were detected at levels slightly above the residential soil cleanup criteria in 1 of the 12 shallow samples.
- Lead was detected in 2 of the shallow samples.
- No contaminants exceeded the standards in the deeper soil samples.
- No contaminants exceeded the standards in the background soil samples.

# Soil Investigation - Results

- NJDEP will delineate the contaminated soil areas to help determine the next steps.
- NJDEP and NJDHSS conclude that the soils do not indicate a health risk based on contaminant concentrations, background levels, and expected exposure scenarios.



# Skating Pond Investigation

- 2 sediment samples collected
- 2 surface water samples were collected

# Skating Pond - Results

- Sediment - Polycyclic Aromatic Hydrocarbons (PAHs), metals and pesticides were detected at levels slightly above the ecologically-based sediment quality criteria.
- Surface Water - PAHs and metals were detected at levels above the surface water quality criteria.

# Skating Pond - Results

- NJDEP considers the levels found in the sediment and surface water to be consistent with what is typically found in waterbodies receiving runoff in a developed environment.

# Brook Investigation

- 11 sample locations for the length of the brook within the Gardens
  - 22 sediment samples collected
  - 11 surface water samples collected
- 1 background sediment sample (retention basin behind the firehouse)

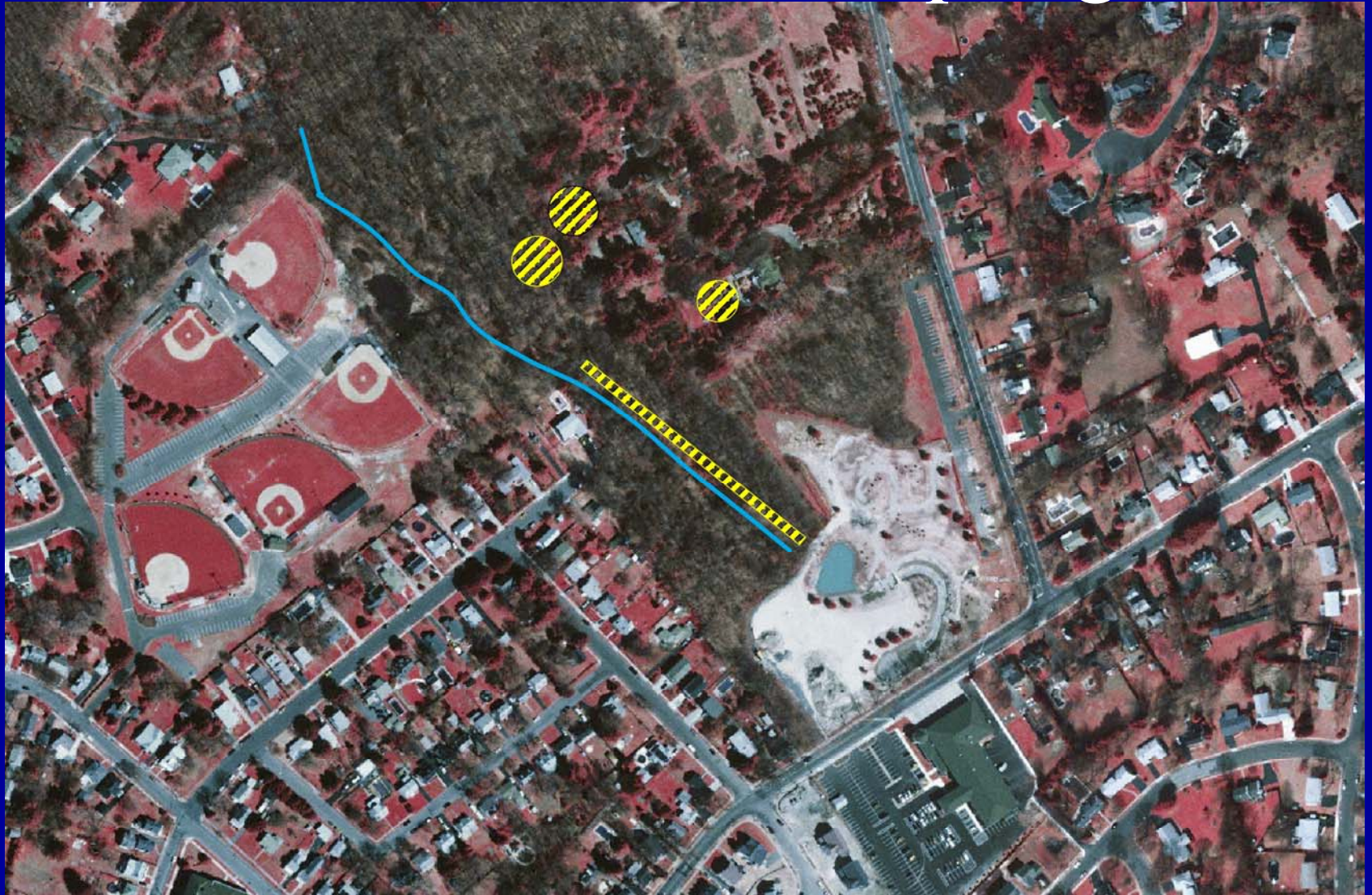
# Brook Investigation - Results

- Metals, PAHs and pesticides were detected at various locations in levels that exceeded the NJDEP sediment quality and/or surface water quality criteria
- These levels are typical of what is found in waterways due to runoff in a developed environment
- Petroleum-type product detected in one shallow sediment sample

# NJDEP Recommendations

- Continue to limit access to the soil dumping areas
- Delineate known soil contamination
- Delineate and remediate petroleum-type product detected in sediment of Unnamed Tributary of Miry Run
- Sample additional dumping areas that were identified during the October 2006 sampling event

# Proposed Locations for Next Round of Sampling



# NJDEP Recommendations (cont.)

- Commence sampling efforts in the Spring of 2007