

# Somerville

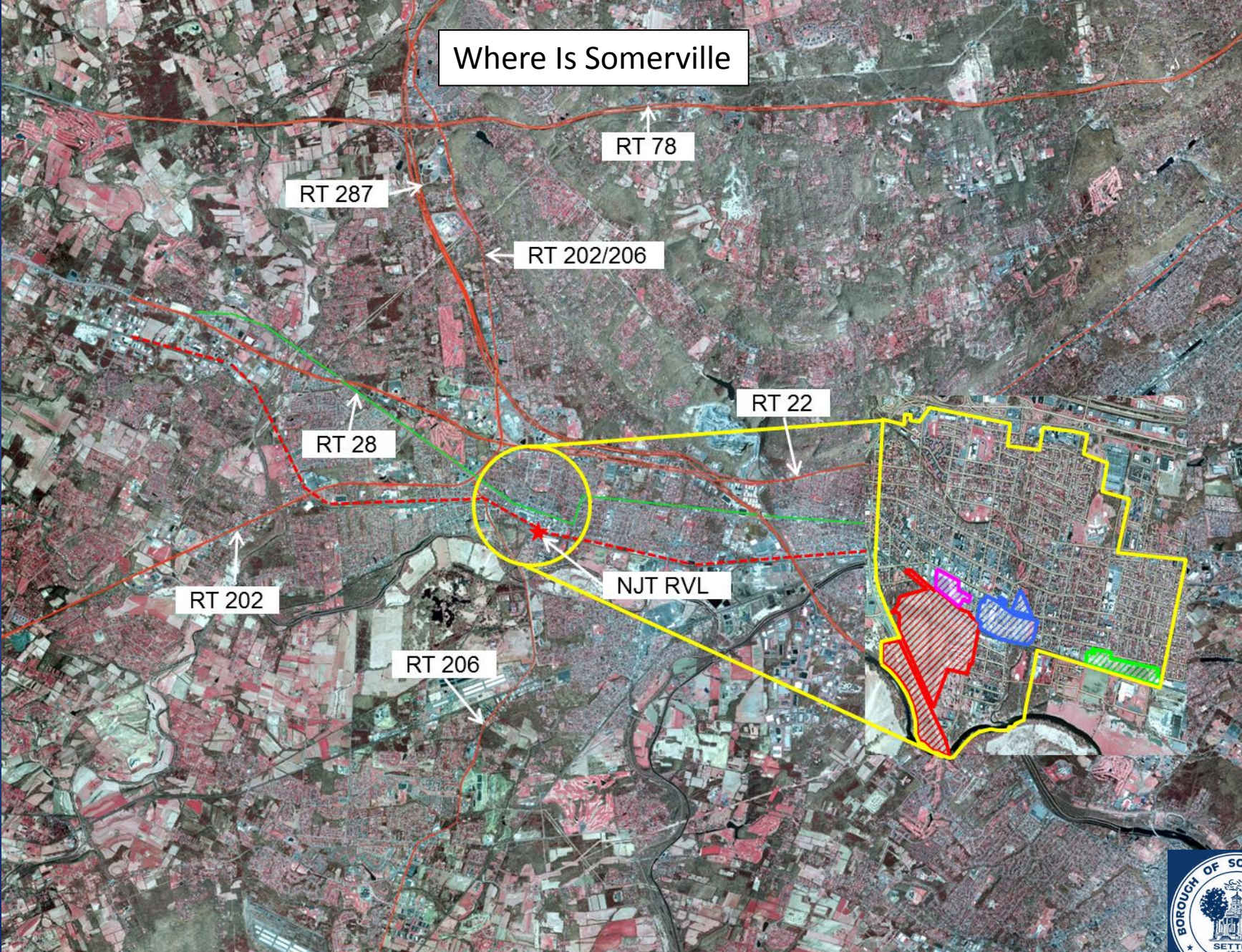
## CVP/SRAG Meeting

### 6/8/2016

Colin Driver, Dir. of Economic Development  
Borough of Somerville



# Where Is Somerville



## The Borough of Somerville is:

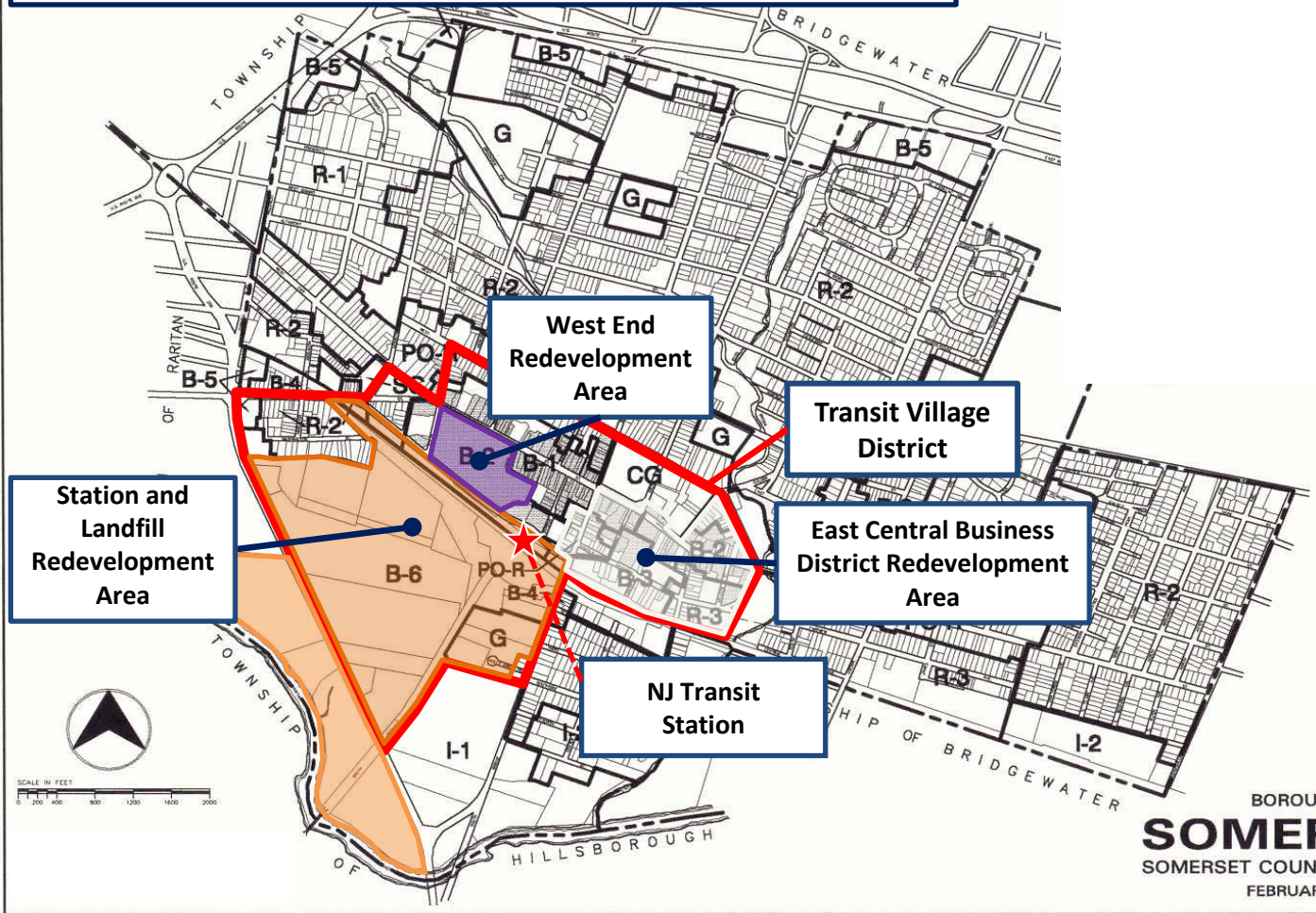
- County Seat of Somerset County
- 2.2 square miles in area
- Population 12,400 +/-
- 3 public schools
- 2 parochial schools

## More Urban than Suburban

- Aggressive redevelopment – 3 redevelopment areas on Main Street
- Very busy Main Street
- Main Street (Downtown) is a destination
- Main Street is State Route 28
  
- Borough is on the NJT Raritan Valley Line – Station one block from Main
- Borough Downtown core Area is part of a designated Transit Village



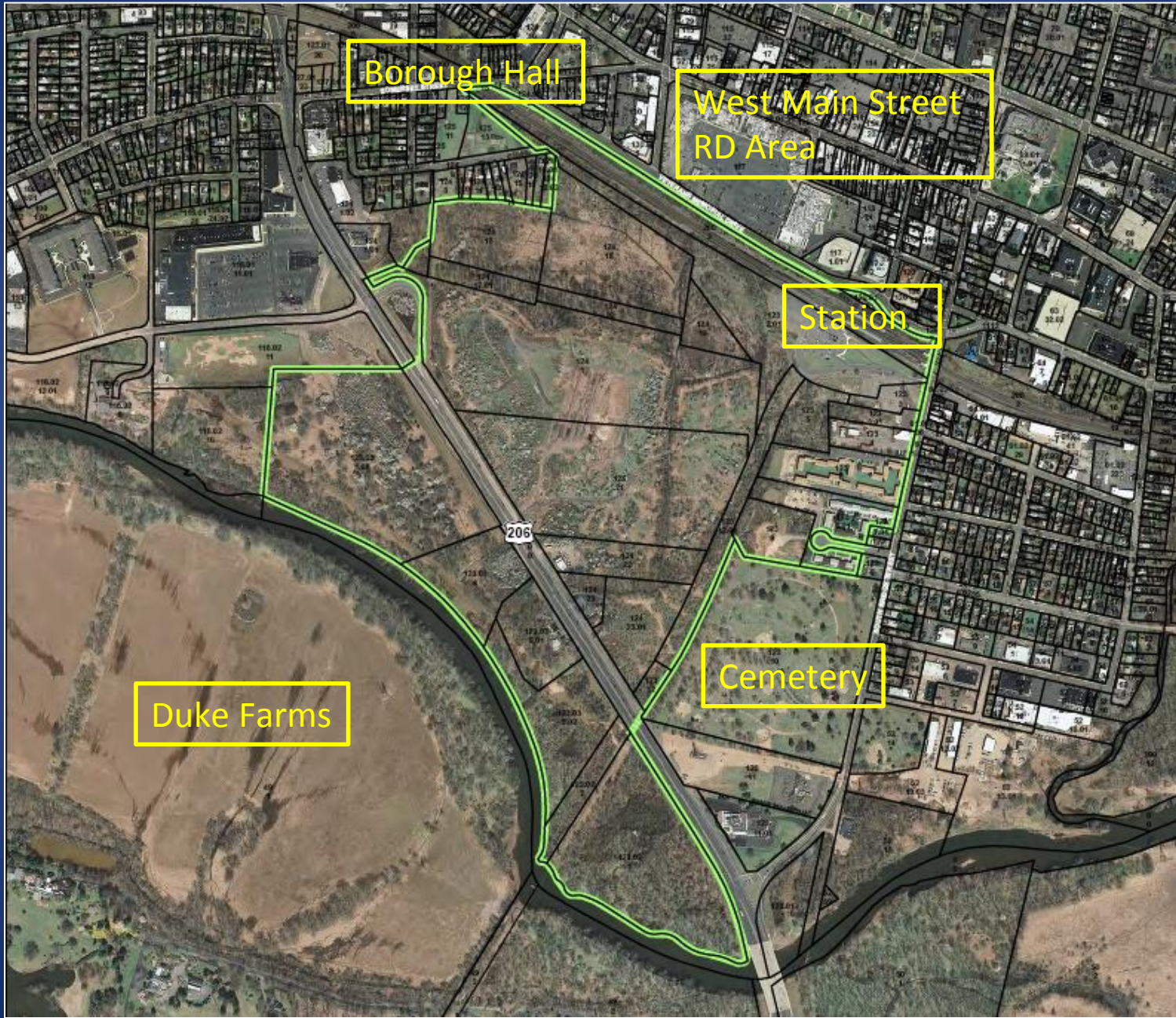
# Three RD Areas within Downtown Core & TV Boundary



BOROUGH OF  
**SOMERVILLE**  
SOMERSET COUNTY, NEW JERSEY  
FEBRUARY, 2001



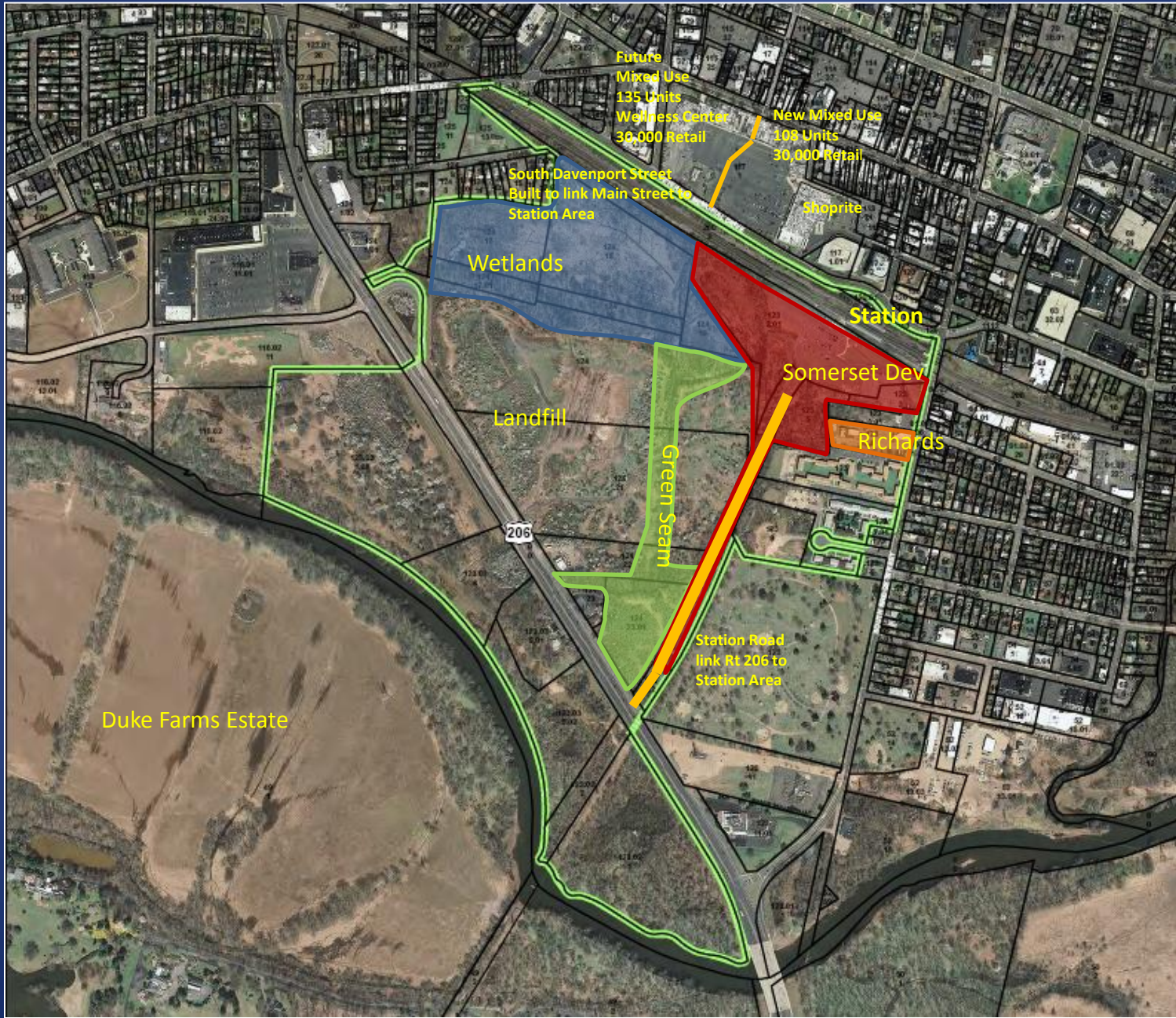
# Landfill Redevelopment Area



# Landfill Redevelopment Area



# Landfill Redevelopment Area Elements



# Links to Main Street





# Communication-Continuity-Consistency

## **The Borough Redevelopment Plans are endorsed by:**

- Somerset County Freeholders
- Somerset County Planning Department
- New Jersey TRANSIT
- Regional Plan Association
- New Jersey EDA
- These Plans are incorporated into the Somerset County CEDS

## **The Borough has been designated:**

- A TOD Area – NJ DOT Designation
- A BDA – NJ DEP Designation
- An ERG Area – NJ EDA Designation
- A Main Street NJ Community – Main Street NJ Designation

## **The Borough has received financial support from:**

- Somerset County – Open Space fund and other
- NJ EDA
- NJ EIT
- NJT – for Landfill Visioning and RD Planning
- NJ DOT – Landfill Visioning



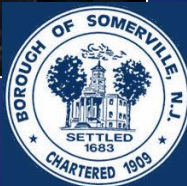
## Financing

The Borough Landfill Redevelopment Team has worked with the DEP Office of Brownfields Reuse and the EDA for many years to:

- Obtain a \$3.3 million grant for the environmental Investigation for the landfill and production of the RIR/RAW for stage 1 - the GREEN SEAM Remediation
- Due to the size and scope of remediation secured three Remediation Grants totaling \$12.2 million
- To provide the 25% matching Borough contribution worked with the NJ EIT to Obtain a loan of \$3.9 million
- The end result will be a 12 acre public green space in an area that has been closed to the public for over 80 years.



# Bikes and More Bikes



# Somerville

## It's A Really Cool Place

