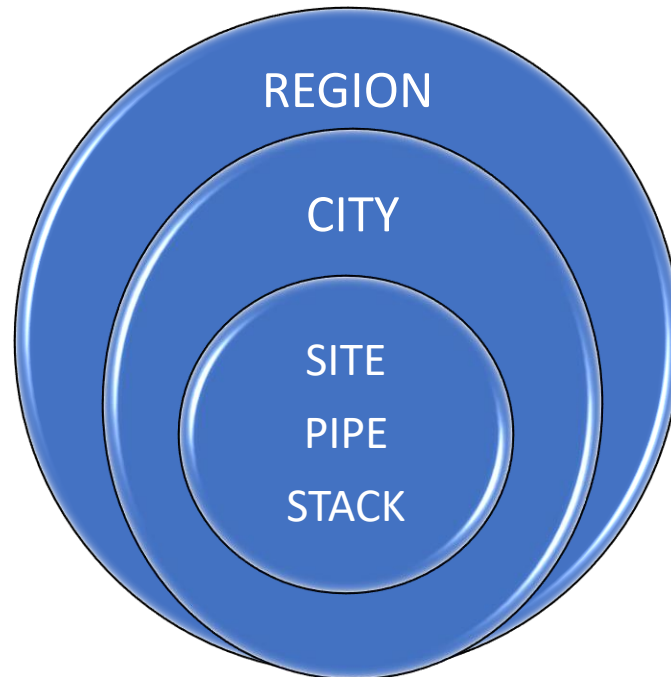


# Community Collaborative Initiative

*Adding a partnership-based approach enhances the traditional work we do while strategically tackling the big issues we face today...*

**Bill Lindner, Office of Brownfield Reuse**



STATE OF NEW JERSEY  
**DEPARTMENT OF ENVIRONMENTAL PROTECTION**





# Community Collaborative Initiative:

## FILLS THE GAP

**Traditional programs do great work...**

*but are confined to the areas of their responsibility*

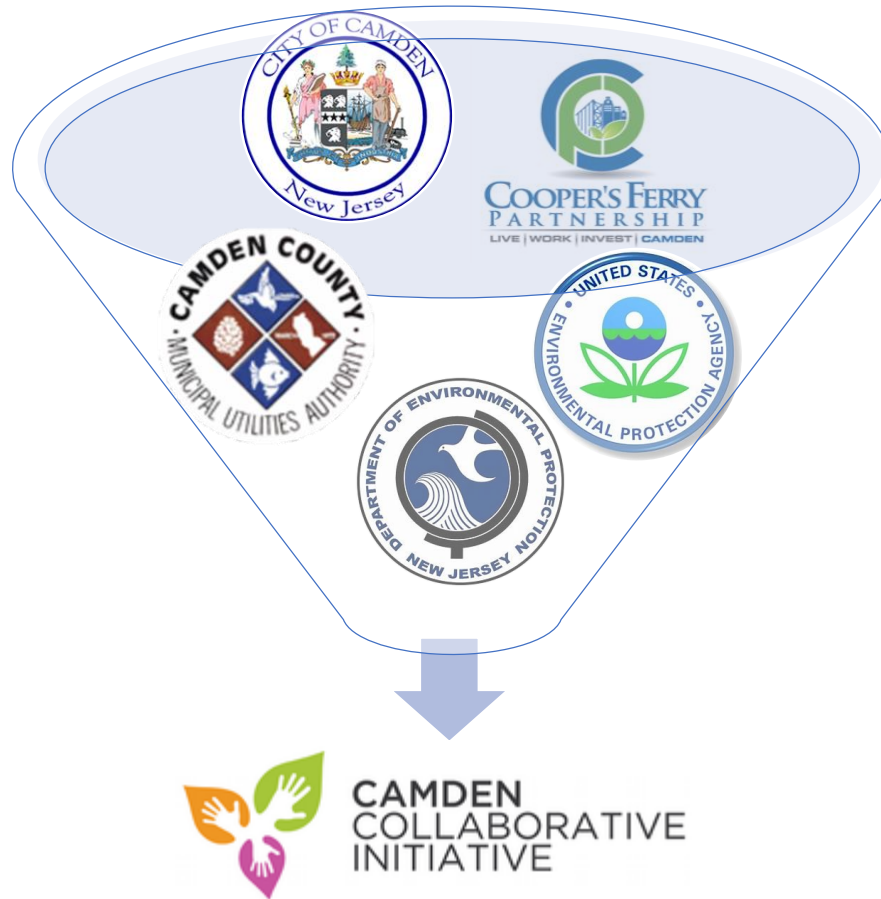
Program	Relationship with outside	Primary Work Goal	Work Nexus	Environmental Conditions	Environmental Opportunities	Decision-Making Lens	Working Partners
Traditional Programs	Regulatory	Protection of media/resources	Media-based on Agency priorities	Single-media	Improvements to site, pipe & stack; protection of resources	Resource & human health protection	Primarily regulated entities
Community Collaborative	Partnership	Revitalization & Quality of Life in built environment	Place-based on Aligned Priorities	Multi-media, Legacy problems & Cumulative impacts	Redevelopment, Revitalization, Restoration & Resiliency	Environmental Social, Economic & Health	Cross-program, Cross-agency & Stakeholders

**Current challenges require diverse expertise & a placed-based lens...**

*complex problems frame integrated and multi-faceted solutions*



# How the Community Collaborative Initiative was Formed



**The essential characteristics of the Community Collaborative are...**





# DEP Evolves from Single Program to Cross-Program...

## **Traditional programs: Transactional**

Single programs: not equipped to address multiple environmental stressors  
Single media actions: no distinct Quality of Life improvements



Waterfront South Rain Gardens Park, Camden NJ

## **Community Collaborative: Transformational**

Long-term trusted relationships  
Imbedded staff aligns priorities & resources



# Finding Opportunities in Unexpected Places



## Moving beyond the obvious:

- Not just site redevelopment
- Not just CSO improvements
- Not just open space creation

## How?

Being “On the Ground”

Preserving Historic Elm Tree’s Genetic History,  
Perth Amboy, NJ



# Persistence on Key Projects



Assunpink Daylighting Project, Trenton

**Main issue:**  
**No DEP 'owner' of project**

*Project fenced & forgotten for 20 years...*

**CCI took ownership & led project resurrection**

- **Within 1 year, CCI reassembled partners & secured gap-funding**
- **New 2-acre downtown park & stream restoration opens in 2019**





# Turning Good Projects into Great Projects

PCB Scrapyard → Community Park

Private Redevelopment → GI, Jobs & Social

Transit Investment → Connectivity



2<sup>nd</sup> St Park, Perth Amboy



# CCI Aligns with State & Federal Priorities

- NJ Executive Order #23 and partnering in Environmental Justice communities
- NJ Executive Order #40: State Agency Coordination for the Capital City
- Economic Development: Opportunity Zones
- Governor Murphy's Economic Master Plan
  - Strategic Priority 2- Investing in Communities / Brownfields
  - Strategic Priority 4- Making Government work better
- EPA Lean Government Initiative
- EPA Community-Driven Approach



Former Camden Labs Site, now undergoing transformation into Whitman Park Athletic Fields, CamdenNJ





# CCI Expansion to 8 Additional Cities

In partnership with NJ EDA and to maximize NJ's Federal Opportunity Zones, CCI is now expanding to 8 additional cities



CCI is a community driven placed-based approach that leads to environmental improvements, economic development and quality of life improvements thru diverse partnerships





# CCI Focus: Needs, Opportunities & Outcomes

BROWNFIELD REDEVELOPMENT

LOCALIZED FLOODING

QUALITY OF LIFE

PARK DEVELOPMENT

CREATING LOCAL JOBS

WATERFRONT ACCESS

INFRASTRUCTURE UPGRADES

LIVING SHORELINES

ILLEGAL DUMPING

COMBINED SEWER OVERFLOWS

ENERGY RESILIENCY

STREAM DAYLIGHTING

ENVIRONMENTAL EDUCATION

URBAN AGRICULTURE

GREENING PRIVATE REDEVELOPMENT PROJECTS

GREEN INFRASTRUCTURE

WATER CONSERVATION

URBAN FORESTRY



# Community Collaborative Initiative

**Bill Lindner**

[William.Lindner@dep.nj.gov](mailto:William.Lindner@dep.nj.gov)

**Thank You!**



STATE OF NEW JERSEY  
DEPARTMENT OF ENVIRONMENTAL PROTECTION

