

Revised Total Coliform Rule (RTCR)

Seasonal System Factsheet

NJDEP Bureau of Safe Drinking Water



Are you a Seasonal System?

- 1) Do you depressurize (dewater) your water system completely or partially during periods of the year?
- 2) Are there periods of the year where water flow is absent or stagnant in portions of your system due to inactivity or disuse?

***If you answered YES to either of the questions above AND you are a noncommunity groundwater system, you are a Seasonal System.**

Common examples of Seasonal Systems include: Camps, campgrounds, parks, swim clubs.

What is the RTCR?

On April 1, 2016, the Revised Total Coliform Rule (RTCR) issued by the US EPA went into effect. The RTCR changed total coliform sampling requirements for all water systems, including special requirements for Seasonal Systems.

New Requirements for Seasonal Systems under RTCR:

- 1) Complete **Seasonal Start-Up Procedures**
- 2) Take monthly **ROUTINE** Total Coliform (TC) samples¹
- 3) Update **RTCR Sample Siting Plan** with new requirements²

1. See the **RTCR Monthly Monitoring Factsheet** for detailed information about routine monitoring requirements.
2. Use the **Sample Siting Plan Template for Seasonal NonCommunity Water Systems** for an easy way to ensure your RTCR Sampling Plan meets requirements.

Found at: <http://www.nj.gov/dep/watersupply/dws-sampreg.html>

What to do Before Taking a Start-Up Sample?

- Inspect each well – is each well sealed and intact? Are there any openings that would allow in debris or contamination?
- Ensure that all treatment is functioning properly. Perform disinfectant or UV maintenance.
- Inspect any storage and pressure tanks – do they need repairs?
- Flush the distribution system – it is required that you flush the stagnant water from the system
- Inspect your pipes (distribution system)

Next complete your Seasonal Start-up procedures prior to opening

What are the Seasonal Start-up Procedures?

- 1) Take a total coliform (TC) **START-UP SAMPLE** prior to opening
 - Must be taken **within 30 days** before opening
 - Should be taken from the depressurized/inactive areaSee Next Page – [Seasonal System Start-up Sample Flowchart](#)
- 2) Submit a **Seasonal Start-up Certification Form**
 - Form must be submitted regardless of sample result **prior** to opening your system
 - A copy of your sample results must be attached
 - Your opening date and close date must be filled out in the form

The Seasonal Start-up Certification Form can be found at:

<http://www.nj.gov/dep/watersupply/doc/bsdw109.docx>

Why is it so important to test your water prior to opening? When water is stagnant or absent from waterlines, there is an increased risk of microbial contamination in the system. Testing your water ensures it is safe to drink before serving it to the public. It allows you to catch and fix any problems before they arise.

What is your opening date? This is the date that you open your *water system*, not necessarily your business. This is the date that you first serve water to the public (including employees) or that the public first has access to your water.

Questions? – Contact Us

Bureau of Safe Drinking Water
609-292-5550

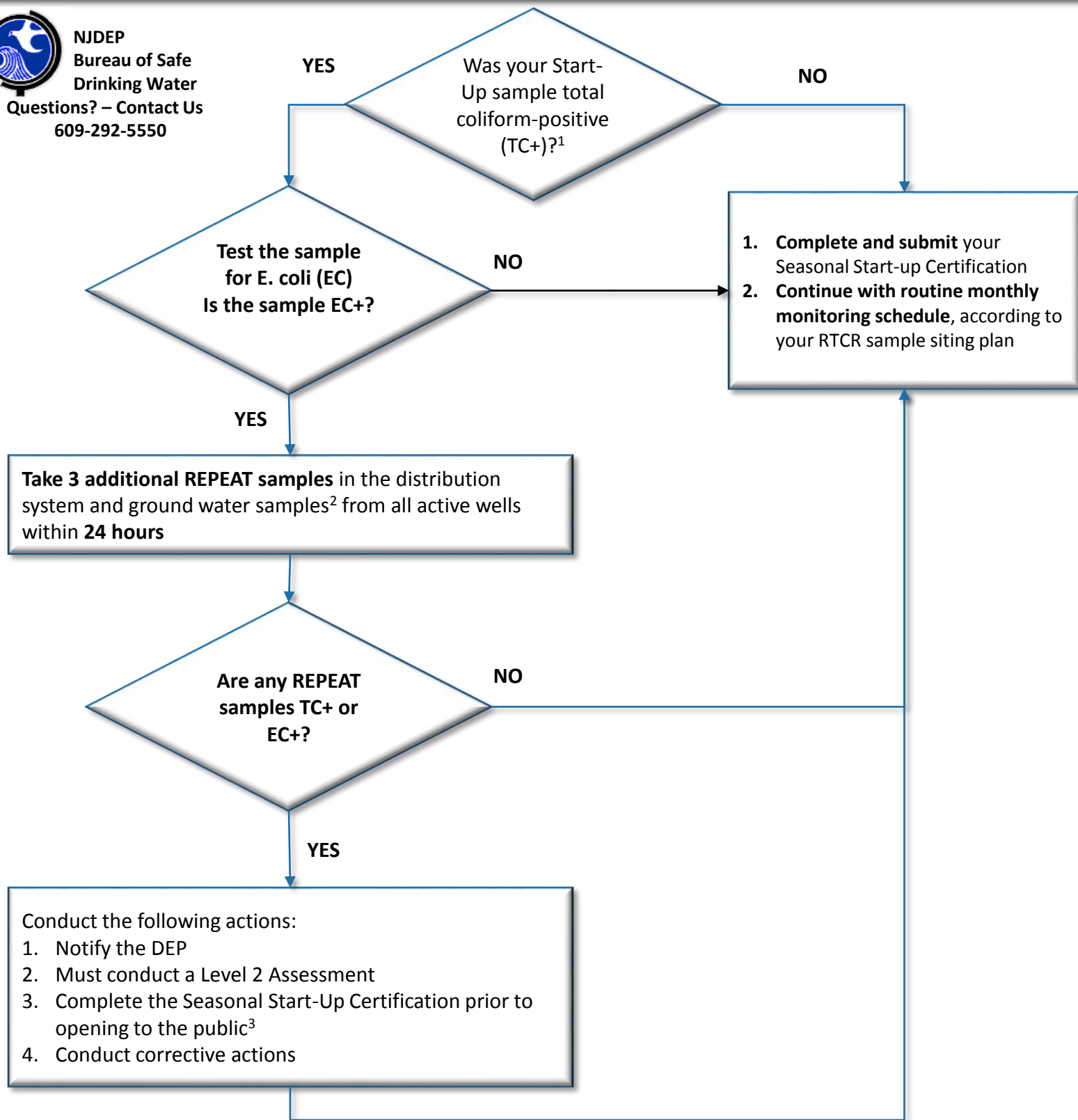
If the seasonal start-up sample is collected in the SAME MONTH as the system's monthly RTCR monitoring schedule and collected prior to opening, the sample can be used to satisfy the routine monthly monitoring requirement. To have your start-up sample count towards your routine monthly monitoring, your laboratory must submit the sample electronically through E2 and add SSUP to the end of the Sample ID.

Revised Total Coliform Rule

Seasonal System Factsheet - Seasonal Start-Up Sample Flowchart



NJDEP
Bureau of Safe
Drinking Water
Questions? – Contact Us
609-292-5550



NOTES

1. You can use your Start-Up Sample to fulfill your monthly monitoring requirement. If your Start-Up sample is also your routine monthly sample, traditional RTCR sampling requirements apply, such as take 3 REPEAT samples within 24 hours if your result is TC+. Refer to the RTCR Monthly Monitoring Factsheet.
2. Refer to GWR flowchart for sampling, public notice, and corrective action requirements.
3. If the Start-up sample is EC+ and REPEATS are EC+, the Seasonal Start-Up Certification must be completed **prior to opening** and corrective actions must be complete **prior to use of the well**.