



WIIP

WATER INFRASTRUCTURE
INVESTMENT PLAN

SOURCES OF FUNDS



USEPA

USEPA Annual
CAP Grant
(CW/DW)



NJDEP

**New Jersey
Water Bank
(SRF)**



State of NJ

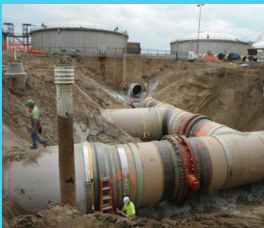
20% Match
to CAP Grant

Below Market
Rate Financing

Repayments

I-BANK

AAA Market
Rate Bond
Funding



Projects





WIIP

WATER INFRASTRUCTURE
INVESTMENT PLAN

CURRENT (SFY2022) CLEAN WATER FUNDING PACKAGES

Principal Forgiveness (PF) Opportunity

Clean Water PF	Principal Forgiveness Share	PF Cap per Applicant	Projected Amount of PF Available
Water Quality Restoration	50%	\$2M	\$17M
Coastal Community Water Quality Restoration	50%	\$2.5M	\$2.5M
CSO Sewershed - Grey and Green Infrastructure	50%	\$2M	\$34M
Overflow and Stormwater Grant (OSG) + CW SRF PF Loans	20%	\$0.2M	\$1M

Total PF is approximately \$55M



CURRENT (SFY2022) CLEAN WATER FUNDING PACKAGES

Clean Water Categories	Blended Interest Rate for Projects Not Receiving PF Loan
CSO Sewershed - Grey and Green Infrastructure and Water Quality Restoration Projects *	25% of I-Bank's AAA Market Interest Rate**
All Other Water Quality Projects (Base CWSRF)	50% of I-Bank's AAA Market Interest Rate
Brownfield Redevelopment (Conduit Projects) and New Landfill and Landfill Cell Projects ***	75% of I-Bank's AAA Market Interest Rate**

* Costs in excess of \$10 million for CSO Abatement and Water Quality Restoration Projects will be financed under the Base CWSRF package.

** 25% of I-Bank's AAA Market Interest Rate means an effective interest rate no greater than would have resulted from financing with a 25% share I-Bank's AAA bond funds at market interest rates and a 75% share of the Department interest-free loan funds.

*** The construction of facilities to collect, convey and/or treat leachate and runoff from new publicly-owned landfill cells.



WIIP

WATER INFRASTRUCTURE
INVESTMENT PLAN

CURRENT (SFY2022) DRINKING WATER FUNDING PACKAGES

Drinking Water	Blended Interest Rate I-Bank Market Rate for Non-Principal Forgiveness Share of Loan	Principal Forgiveness Share	Funding Cap (per applicant / per year)
Base DWSRF - Public	50%	0%	\$25 million (remainder at I-Bank market rate as capacity allows)
Base DWSRF - Privately Owned	75%	0%	\$25 million (\$10 million per project) (remainder at I-Bank market rate as capacity allows)
Nano ≤ 10,000 Customers	50%	50%	\$1 million (remainder at base)
Affordability (publicly-owned water systems only)*	25%	0%	\$10 million (remainder at base)
Small Systems (≤ 1,000): Engineering Contract**	N/A	100%	\$750,000 (remainder at base)
Small Systems (≤ 500): Community Engineering Corp.	N/A	100%	\$750,000 (remainder at base)



SFY2022 DWSRF LEAD REMEDIATION FUNDING PACKAGES

Drinking Water	Principal Forgiveness	Total Project Cost
Lead Line Replacement	50% of project costs up to:	
> 5,000 known lead service lines	\$18M*	\$36M*
≥ 1,000 and ≤ 5,000 known lead service lines	\$5M	\$10M
< 1,000 known lead service lines	\$1M	\$2M
Lead Remediation - small systems serving < 1,000	100% of project costs up to \$1M	\$1M

* DEP proposed an SFY22 IUP amendment to increase PF cap for large systems > 5,000 know LSLs to \$18M, project cost cap increased to \$36M.



WIIP

WATER INFRASTRUCTURE
INVESTMENT PLAN

LOAN PROCESS

