

## **Lake Hopatcong Harmful Algal Bloom (HAB): Field Sampling Locations and Results**

**As of 10/16, the Lake Hopatcong advisory remains in effect for the Prospect Point and Wood Port Bay area in the northeastern portion of the lake (see advisory status map below).** Results from the 10/15 sampling are included in the table below.

Additional sampling was conducted at several areas outside of the Prospect Point and Wood Port Bay areas due to some observations of localized suspected HABs along the shoreline. Results for one shoreline location showed cell counts greater than the health advisory guidance level. **As such, an advisory has been recommended for a localized shoreline area on the eastern side of the lake (Lake Rd and Castle Rock Road - East of Halsey Island).**

If suspected HABs are observed, please “Avoid It and Report It” to DEP either by calling the DEP Hotline (1-877-WARNDEP (927-6337)) or via the Warn DEP mobile app.

All previous results (6/10/19 - 10/10/19) for Lake Hopatcong sampling stations are available [here](#).

### Lake Hopatcong Harmful Algal Bloom (HAB) Samples and Results as of 10/15/2019

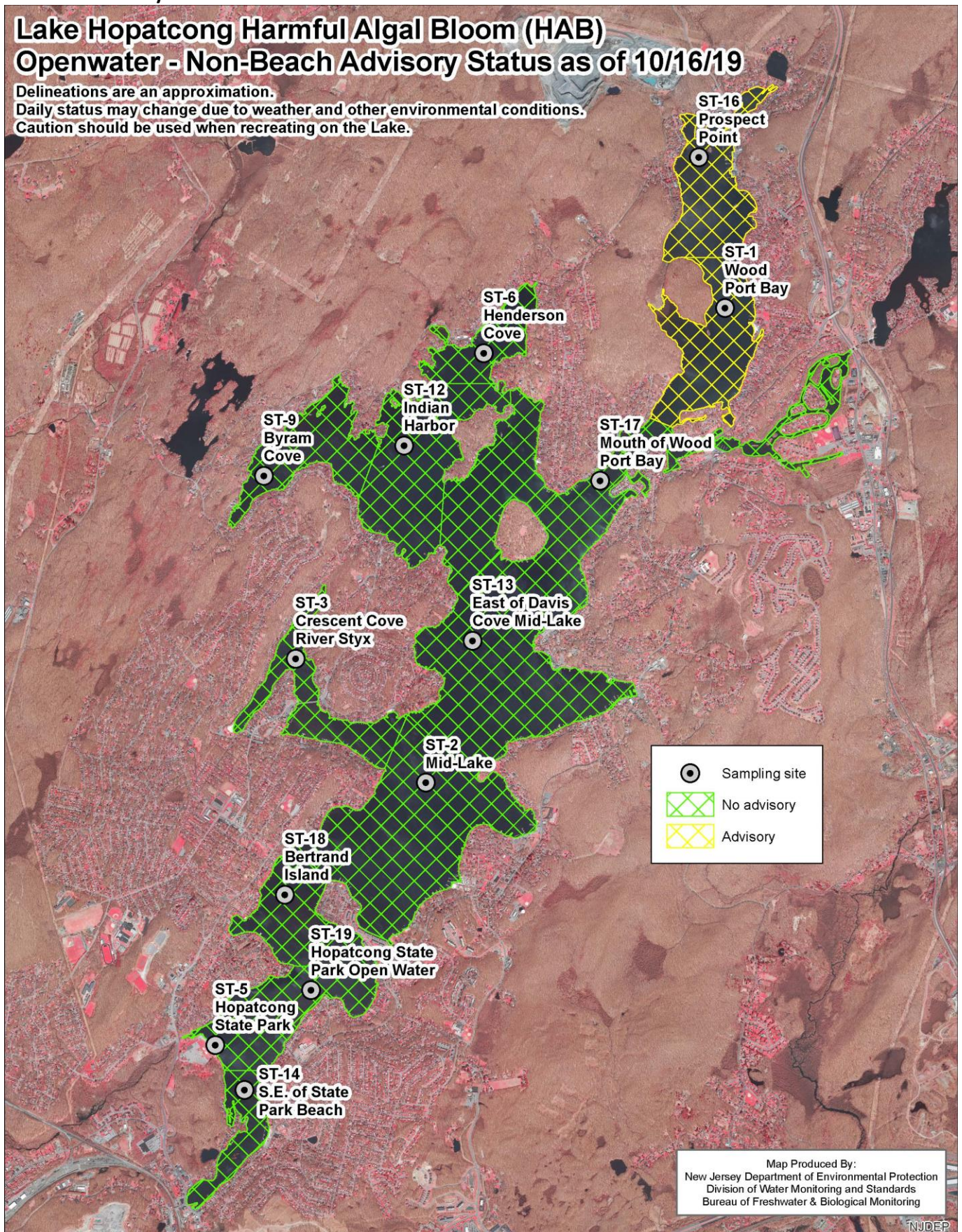
	ST1 (Woodport Bay)		ST9 (Byram Cove)		ST13 (East of Davis Cove Mid-Lake)		ST16 (Prospect Point)		Shoreline at Lake Rd and Castle Rock Road (East of Halsey Island)	
Date	Cyanobacteria Counts cells/mL*	Microcystins µg/l (lowest Reporting Level 0.15µg/l)*	Cyanobacteria Counts cells/mL*	Microcystins µg/l (lowest Reporting Level 0.15µg/l)*	Cyanobacteria Counts cells/mL*	Microcystins µg/l (lowest Reporting Level 0.15µg/l)*	Cyanobacteria Counts cells/mL*	Microcystins µg/l (lowest Reporting Level 0.15µg/l)*	Cyanobacteria Counts cells/mL*	Microcystins µg/l (lowest Reporting Level 0.15µg/l)*
10/15/2019	23500	< Reporting Level	5125	0.18	16500	< Reporting Level	28750	0.17	27250	0.22
	*NJ Health Advisory Guidance Levels Cell Count ≥ 20,000 cells/ml; Microcystins ≥ 3µg/L									
		Indicates > than advisory levels								



## Non-Beach Advisory Status

# Lake Hopatcong Harmful Algal Bloom (HAB) Openwater - Non-Beach Advisory Status as of 10/16/19

Delineations are an approximation.  
Daily status may change due to weather and other environmental conditions.  
Caution should be used when recreating on the Lake.





## Sampling Locations, HAB Reports and Beach Locations

