

10/25/19

Lake Hopatcong Harmful Algal Bloom (HAB): Field Sampling Locations and Results

As of 10/25, the Lake Hopatcong advisory has been lifted in the Prospect Point and Wood Port Bay area in the northeastern portion of the lake (see advisory status map below). Results from the 10/24 sampling are included in the table below.

Additional sampling was conducted outside of the Prospect Point and Wood Port Bay areas due to observations of localized suspected HABs. Results for 3 locations showed cell counts greater than the health advisory guidance level. **As such, localized advisories continue to be recommended for the shoreline at Byram Cove, and now for Pine Tree Point and north of Bertrand Island (ST-20).**

If suspected HABs are observed, please “Avoid It and Report It” to DEP either by calling the DEP Hotline (1-877-WARNDEP (927-6337)) or via the Warn DEP mobile app.

All previous results (6/10/19 - 10/10/19) for Lake Hopatcong sampling stations are available [here](#).

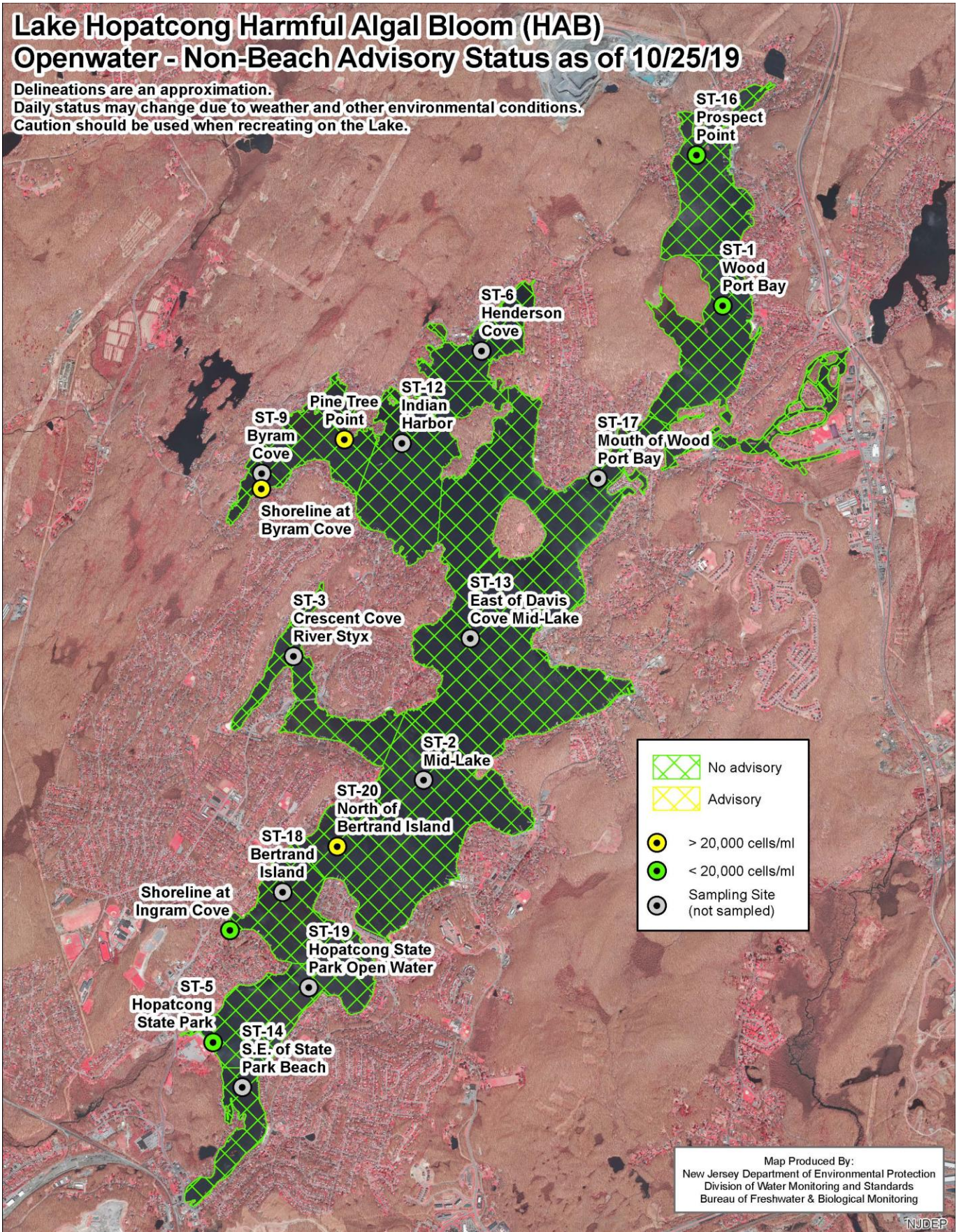
Lake Hopatcong Harmful Algal Bloom (HAB) Samples and Results as of 10/24/2019

	ST1 (Woodport Bay)		ST9 (Byram Cove)		Shoreline at Byram Cove		ST16 (Prospect Point)		Shoreline at Lake Rd and Castle Rock Road (East of Halsey Island)		Shoreline at Ingram Cove		State Park beach		Shoreline at Crescent Cove		Pine Tree Point		ST-20 (North of Bertrand Island)	
Date	Cyanobacteria Counts cells/mL*	Microcystins µg/l (lowest Reporting Level 0.15µg/l)*	Cyanobacteria Counts cells/mL*	Microcystins µg/l (lowest Reporting Level 0.15µg/l)*	Cyanobacteria Counts cells/mL*	Microcystins µg/l (lowest Reporting Level 0.15µg/l)*	Cyanobacteria Counts cells/mL*	Microcystins µg/l (lowest Reporting Level 0.15µg/l)*	Cyanobacteria Counts cells/mL*	Microcystins µg/l (lowest Reporting Level 0.15µg/l)*	Cyanobacteria Counts cells/mL*	Microcystins µg/l (lowest Reporting Level 0.15µg/l)*	Cyanobacteria Counts cells/mL*	Microcystins µg/l (lowest Reporting Level 0.15µg/l)*	Cyanobacteria Counts cells/mL*	Microcystins µg/l (lowest Reporting Level 0.15µg/l)*	Cyanobacteria Counts cells/mL*	Microcystins µg/l (lowest Reporting Level 0.15µg/l)*	Cyanobacteria Counts cells/mL*	Microcystins µg/l (lowest Reporting Level 0.15µg/l)*
10/24/2019	14000	0.12	---	---	24500	0.15	15500	0.13	---	---	2125	0.18	11000	0.15	---	---	275000	0.33	56500	1.47
10/22/2019	16500	< Reporting Level	---	---	26750	0.21	12375	< Reporting Level	0	< Reporting Level	26500	< Reporting Level	63500	< Reporting Level	18000	< Reporting Level	---	---	---	---
10/15/2019	23500	< Reporting Level	5125	0.18	---	---	28750	0.17	27250	0.22	---	---	---	---	---	---	---	---	---	---
*NJ Health Advisory Guidance Levels Cell Count ≥ 20,000 cells/ml; Microcystins ≥ 3µg/L																				
Indicates > than advisory levels																				

Non-Beach Advisory Status

Lake Hopatcong Harmful Algal Bloom (HAB) Openwater - Non-Beach Advisory Status as of 10/25/19

Delineations are an approximation.
Daily status may change due to weather and other environmental conditions.
Caution should be used when recreating on the Lake.



Sampling Locations, HAB Reports and Beach Locations

Lake Hopatcong Harmful Algal Bloom (HAB) Sampling Locations, HAB Reports and Beach Closures

