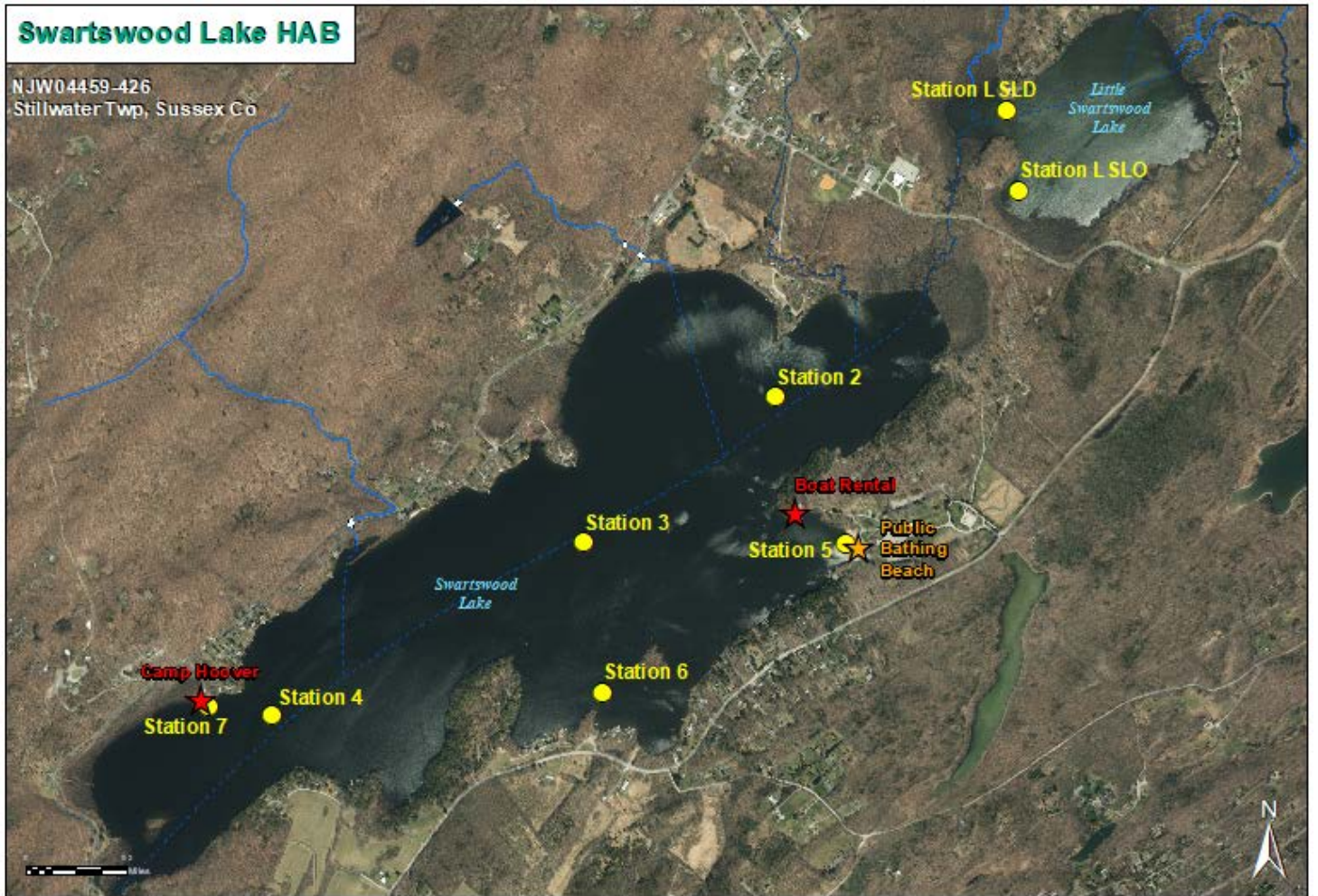


Swartwood Lake HAB Event Summary



Date	Station#	Station Location	Cell Count (cells/mL)	Microcystins (µg/L)	Anatoxin-a (µg/L)
HAB Event 1					
6/21/2017	5	Park bathing beach	705000	0.066	0.001
6/22/2017	5	Park bathing beach	Not Analyzed	0.086	Not Analyzed
6/23/2017	5	Park bathing beach	600000	0.185	Not Analyzed
6/23/2017	7	Camp Hoover	>3000000	0.143	Not Analyzed
6/24/2017	5	Park bathing beach	350000	Not Analyzed	Not Analyzed
6/26/2017	2	Ambient Lakes Monitoring point	33000	0.1	0.015
6/26/2017	3	Ambient Lakes Monitoring point	9000	0.082	No detection
6/26/2017	4	Ambient Lakes Monitoring point	78000	0.104	No detection
6/26/2017	5	Park bathing beach	127000	0.066	No detection
6/26/2017	6	Cove on east side (nr. Hendershots Point)	89000	0.086	No detection
6/26/2017	7	Camp Hoover	112000	0.075	No detection
6/29/2017	5	Park bathing beach	12000	0.052	0.018
6/29/2017	6	Cove on east side (nr. Hendershots Point)	No detection	0.061	0.002
6/29/2017	7	Camp Hoover	No detection	0.12	0.006
6/30/2017	5	Park bathing beach	No detection	0.047	0.004
6/30/2017	6	Cove on east side (nr. Hendershots Point)	5000	0.083	No detection
6/30/2017	7	Camp Hoover	No detection	0.023	No detection
6/30/2017 (am sample)	LSLO	Little Swartswood Lake	No detection	>5.0 (instrument error)	No detection
6/30/2017 (am sample)	LSDL	Little Swartswood Lake Outlet	6000	0.014	No detection
6/30/2017 (am sample re-analysis)	LSLO	Little Swartswood Lake	No detection	0.032	Not Analyzed
6/30/2017 (pm sample)	LSLO	Little Swartswood Lake	No detection	0.237	Not Analyzed
6/30/2017 (pm sample)	LSDL	Little Swartswood Lake Outlet	No detection	0.024	Not Analyzed
Sampling					
8/4/2017	2	Ambient Lakes Monitoring point	Not Analyzed	0.04	Not Analyzed
8/4/2017	3	Ambient Lakes Monitoring point	Not Analyzed	0.011	Not Analyzed
8/4/2017	4	Ambient Lakes Monitoring point	Not Analyzed	0.06	Not Analyzed
HAB Event 2					
8/10/2017	5	Park bathing beach (left end)	42,000	0.04	0
8/10/2017	5	Park bathing beach (right end)	19,000	0.04	Not Analyzed
8/10/2017	6	Cove on east side (nr. Hendershots Point)	137,000	0.12	0
8/10/2017	7	Camp Hoover	116,000	0.07	0
8/15/2017	5	Park bathing beach	<20,000	0.06	Not Analyzed
8/15/2017	6	Cove on east side (nr. Hendershots Point)	84,000	0.15	Not Analyzed
8/15/2017	7	Camp Hoover	107,000	0.15	Not Analyzed
8/16/2017	5	Park bathing beach	< 20,000	0.06	0.02
8/16/2017	6	Cove on east side (nr. Hendershots Point)	80,000	0.18	0
8/16/2017	7	Camp Hoover	> 102,000	0.15	0
8/17/2017	5	Park bathing beach	No detection	0.07	Not Analyzed
8/17/2017	6	Cove on east side (nr. Hendershots Point)	No detection	0.07	Not Analyzed
8/17/2017	7	Camp Hoover	No detection	0.06	Not Analyzed
8/18/2017	5	Park bathing beach	No detection	0.03	Not Analyzed
8/18/2017	6	Cove on east side (nr. Hendershots Point)	No detection	0.05	Not Analyzed
8/18/2017	7	Camp Hoover	No detection	0.06	Not Analyzed
Routine Sampling					
8/21/2017	5	Park bathing beach	Not Analyzed	0.03	Not Analyzed
8/21/2017	6	Cove on east side (nr. Hendershots Point)	Not Analyzed	0.05	Not Analyzed
8/21/2017	7	Camp Hoover	Not Analyzed	0.06	Not Analyzed
HAB Event 3					
9/5/2017	5	Park bathing beach	No detection	0.07	Not Analyzed
9/5/2017	6	Cove on east side (nr. Hendershots Point)	9,500	0.05	Not Analyzed
9/5/2017	7	Camp Hoover (shoreline)	>530,000	7.04	Not Analyzed
9/5/2017	7	Camp Hoover (end of dock)	7,500	0.06	Not Analyzed

