

# FIBI037-R4

## Drakes Brook

Old RR off N. 4 Bridges Road

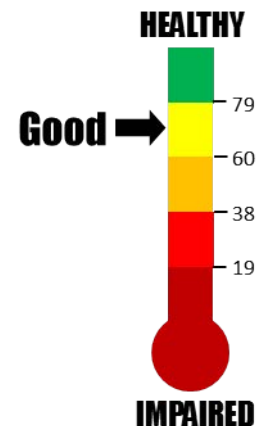
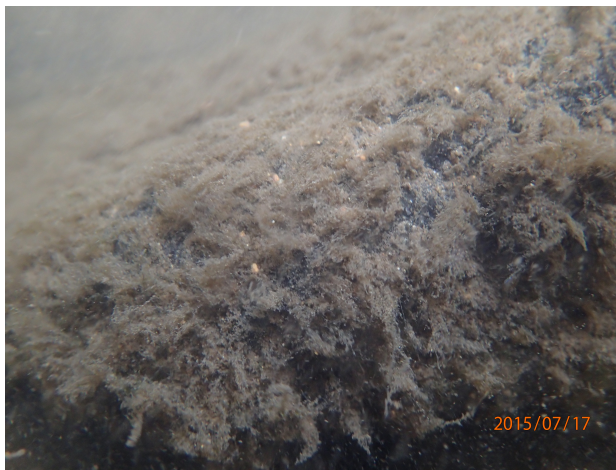
Municipality: Washington Twp

County: Morris

Drainage Area (sq miles): 16

Sample Date: 07/17/2015

Site Type: Sentinel



### IBI Metrics

Metric 1-%Rheophilic Richness	75.89
Metric 2-%Cold Non-tolerant Coolwater	89.22
Metric 3-%Generalist Richness	90.02
Metric 4-Tolerance Index	100.00
Metric 5-%Lithophilic Richness	32.20
Metric 6-%Cyprinidae	3.21
Metric 7-%Dominant 3 Taxa	30.56
Metric 8-%Benthic Insectivore Richness	58.87

### Field Chemistry

Air Temp (°C)	21.1
Water Temperature (°C)	17.51
Dissolved Oxygen (mg/L)	9.34
% Saturation	99.3
pH	7.69
Conductivity (µS/cm)	575.3

***Northern Fish IBI Score (0-100): 59.99***

***IBI Rating: Good***

***High Gradient Habitat Score (0-200): 149***

***Habitat Rating: Suboptimal***

**Summary:** FIBI037 is a sentinel site sampled on a frequent basis to assess environmental change and natural variability in the fish community. Although the IBI score declined slightly from 2013, the 2015 community still contained a relatively large number of slimy sculpin and wild brook trout. The brook trout population indicated good natural reproduction, as almost 60% of the specimens collected were young-of-the-year. The substrate was covered with periphyton and silt which resulted in a lower overall habitat score for this sampling event and has likely impacted the fish community to some small degree. Regardless, young-of-the-year trout have routinely been collected from this FW2-NTC1 stream which is a candidate for upgrade to trout production.

# **FIBI037-R4**

## **Drakes Brook**

<b>Common Name</b>	<b>Scientific Name</b>	<b>Abundance</b>
Tessellated Darter	<i>Etheostoma olmstedii</i>	221
Slimy Sculpin	<i>Cottus cognatus</i>	169
White Sucker	<i>Catostomus commersoni</i>	75
Brook Trout	<i>Salvelinus fontinalis</i>	55
Longnose Dace	<i>Rhinichthys cataractae</i>	40
Redfin Pickerel	<i>Esox americanus americanus</i>	16
Margined Madtom	<i>Noturus insignis</i>	13
Eastern Mudminnow	<i>Umbra pygmaea</i>	9
Blacknose Dace	<i>Rhinichthys atratulus</i>	8
Redbreast Sunfish	<i>Lepomis auritus</i>	8
Pumpkinseed	<i>Lepomis gibbosus</i>	7
American Eel	<i>Anguilla rostrata</i>	6
Brown Trout	<i>Salmo trutta</i>	4
Yellow Perch	<i>Perca flavescens</i>	2
Sea Lamprey	<i>Petromyzon marinus</i>	1
Black Crappie	<i>Pomoxis nigromaculatus</i>	1
Bluegill	<i>Lepomis macrochirus</i>	1
Chain Pickerel	<i>Esox niger</i>	1