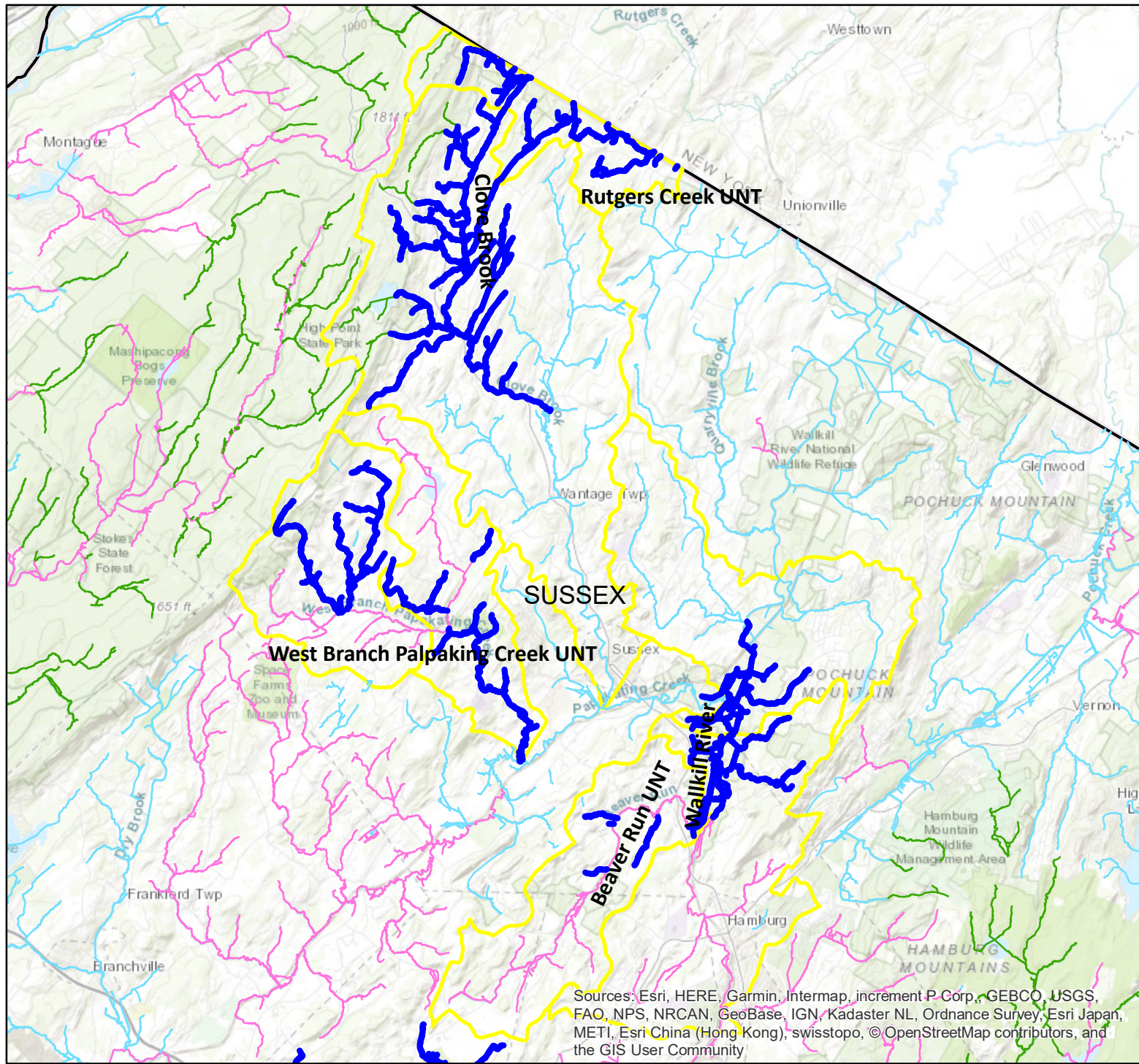
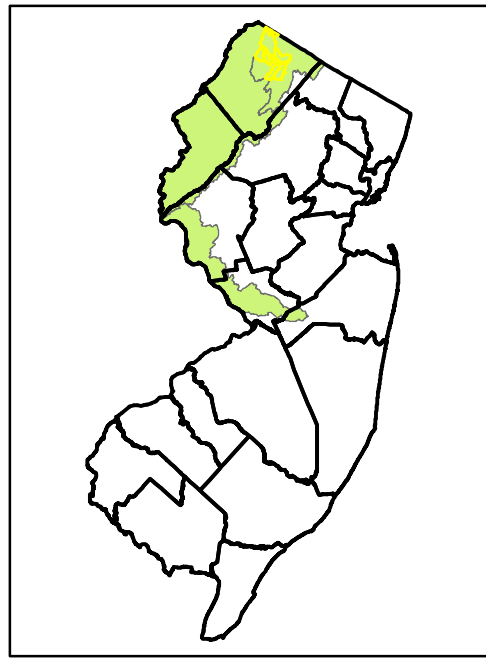


2019 Proposed Category One Waters - Clove Brook, Rutgers Creek, etc.

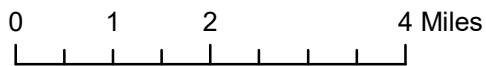


Legend

- Proposed C1 Waters
- C2 Waters (non-C1, non-FW1)
- FW1 Waters
- Existing C1s (300-ft Buffer Applies)
- Watersheds (DEPHUC14)
- Counties

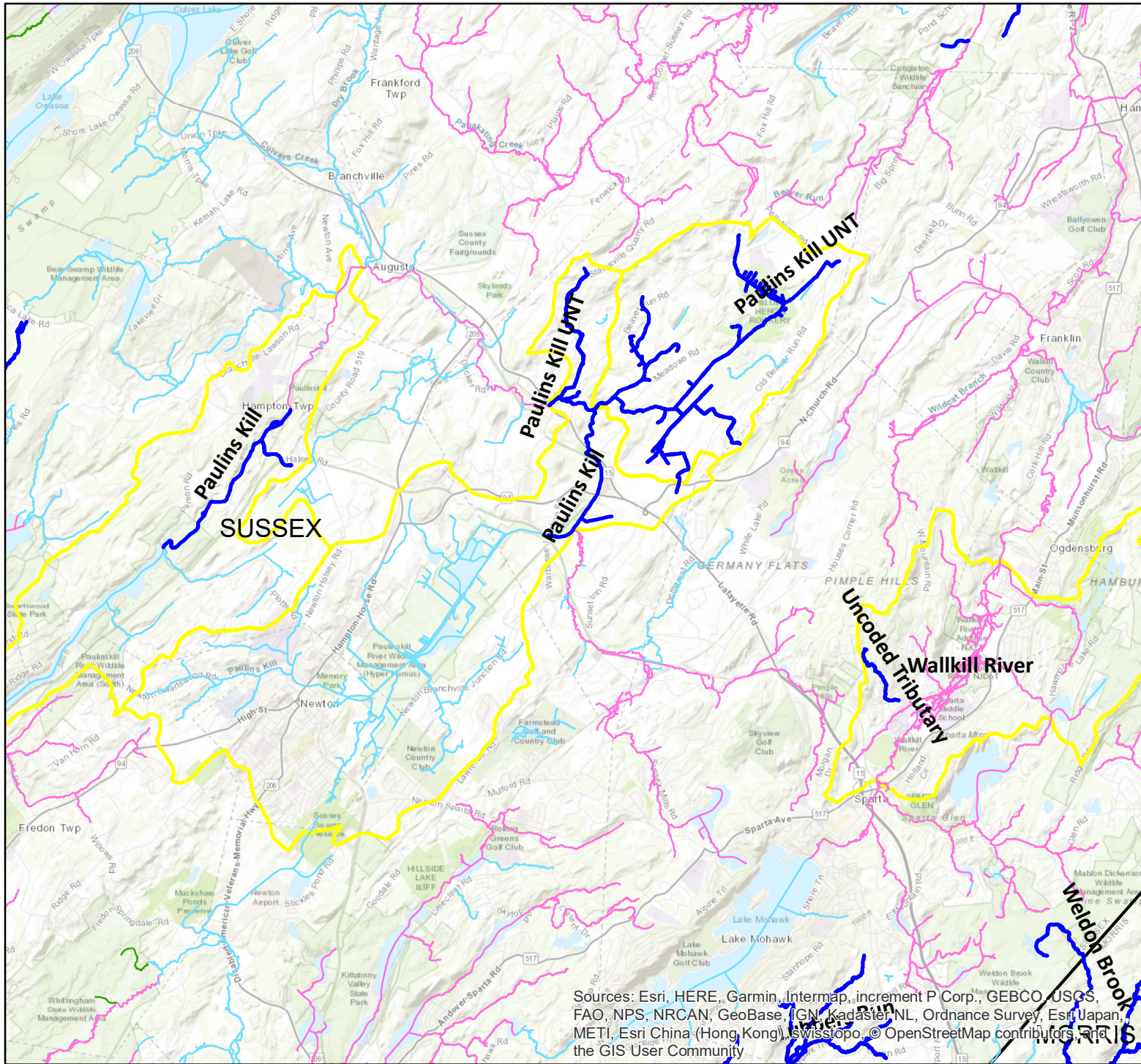


Sources: Esri, HERE, Garmin, Intermap, increment P Corp., GEBCO, USGS, FAO, NPS, NRCAN, GeoBase, IGN, Kadaster NL, Ordnance Survey, Esri Japan, METI, Esri China (Hong Kong), swisstopo, © OpenStreetMap contributors, and the GIS User Community



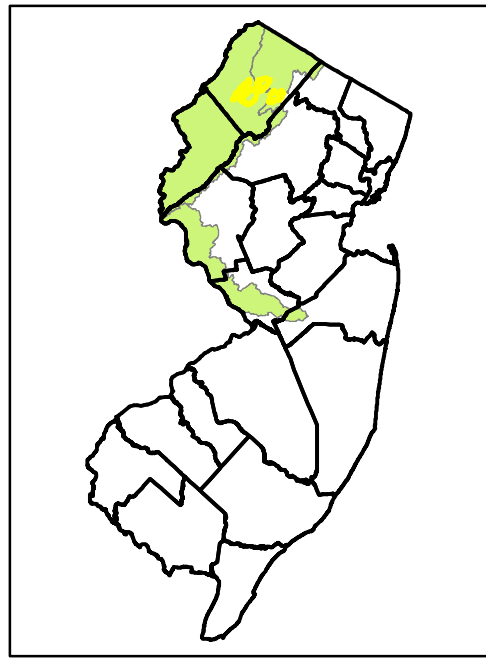
Data Source: NJDEP Bureau of GIS

2019 Proposed Category One Waters - Paulins Kill and Walkill River

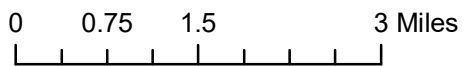


Legend

- Proposed C1 Waters
- C2 Waters (non-C1, non-FW1)
- FW1 Waters
- Existing C1s
- Watersheds (DEPHUC14)
- Counties

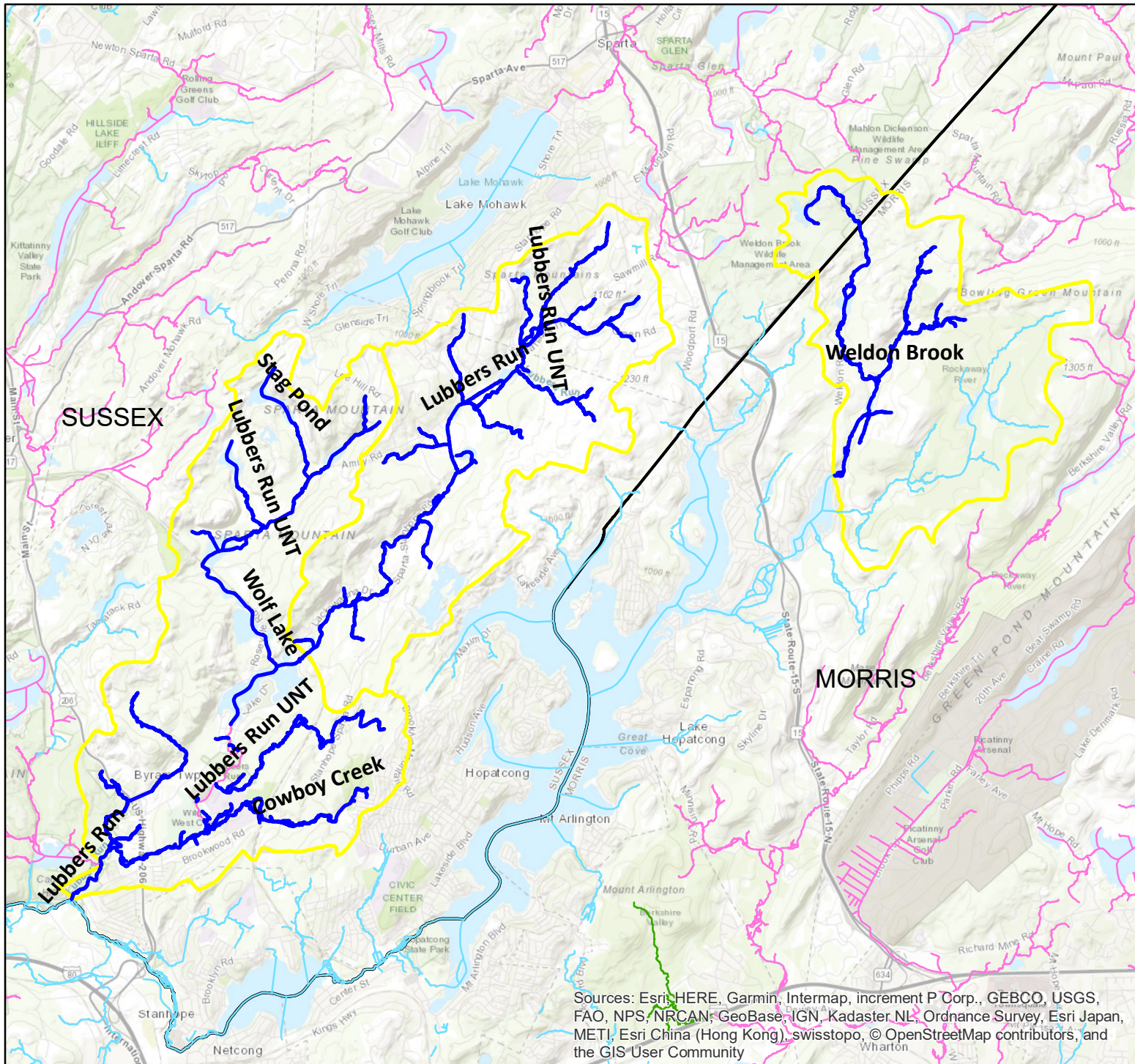


Sources: Esri, HERE, Garmin, Intermap, increment P Corp., GEBCO, USGS, FAO, NPS, NRCAN, GeoBase, IGN, Kadaster NL, Ordnance Survey, Esri Japan, METI, Esri China (Hong Kong), Swisstopo, © OpenStreetMap contributors, and the GIS User Community



Data Source: NJDEP Bureau of GIS

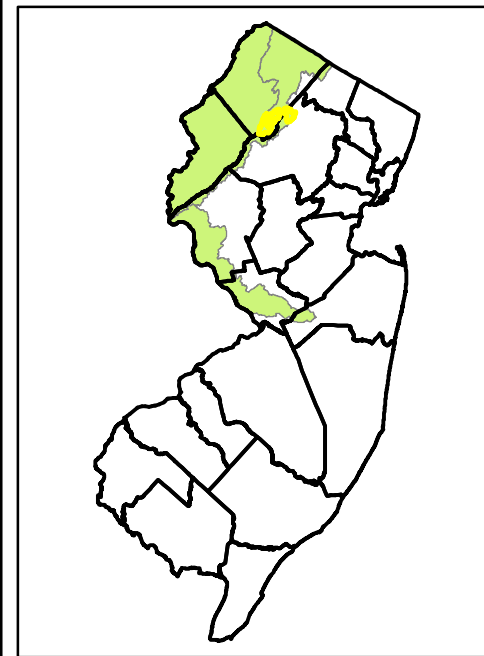
2019 Proposed Category One Waters - Lubbers Run and Weldon Brook



Sources: Esri, HERE, Garmin, Intermap, increment P Corp., GEBCO, USGS, FAO, NPS, NRCAN, GeoBase, IGN, Kadaster NL, Ordnance Survey, Esri Japan, METI, Esri China (Hong Kong), swisstopo, © OpenStreetMap contributors, and the GIS User Community

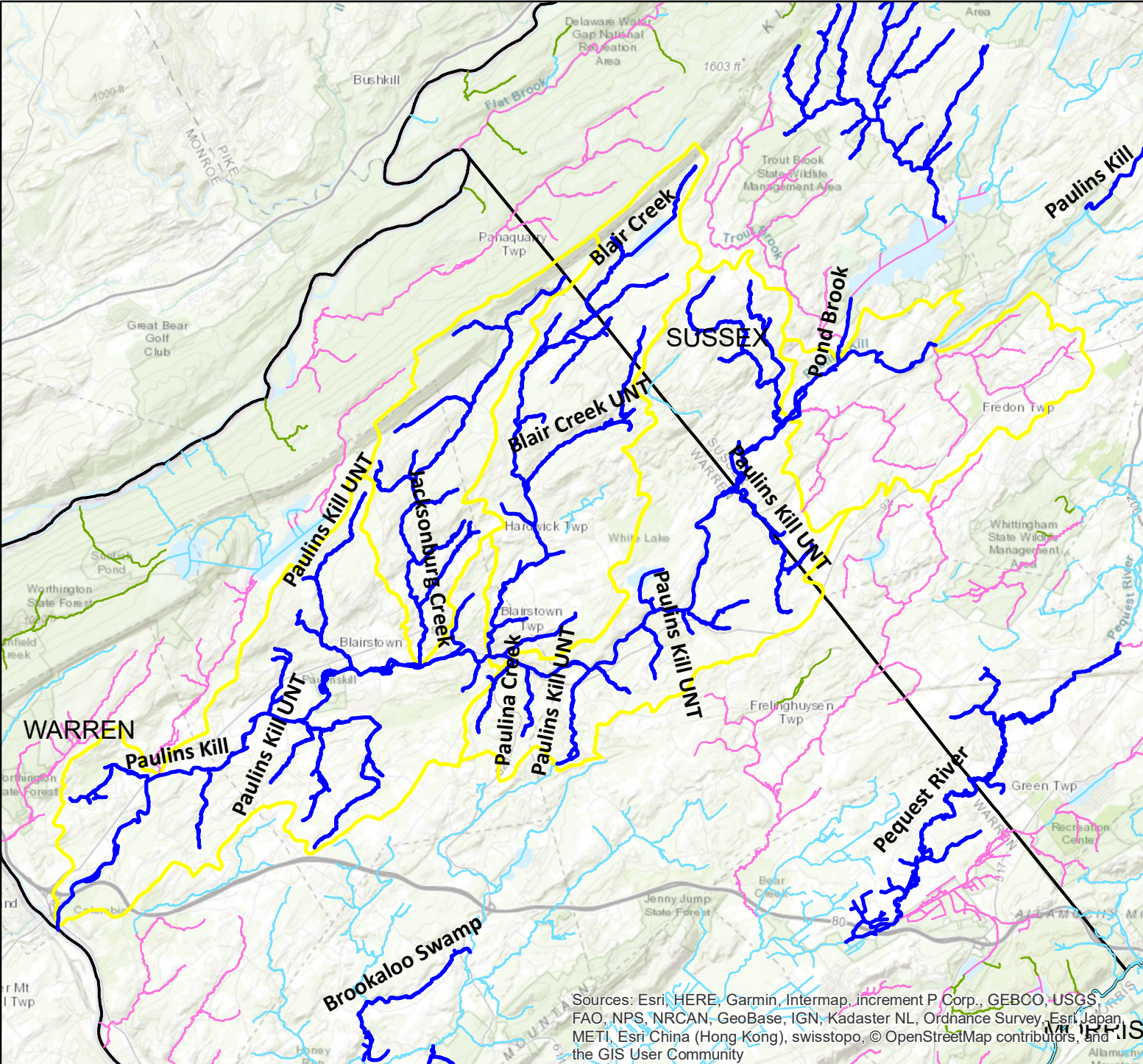
Legend

- Proposed C1 Waters
- C2 Waters (non-C1, non-FW1)
- FW1 Waters
- Existing C1s
- Watersheds (DEPHUC14)
- Counties



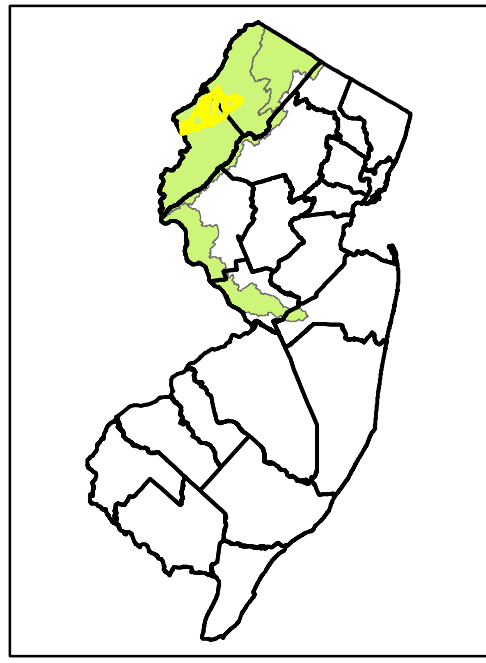
Data Source: NJDEP Bureau of GIS

2019 Proposed Category One Waters - Paulins Kill, Jacksonburg Creek, Blair Creek, and Pond Brook

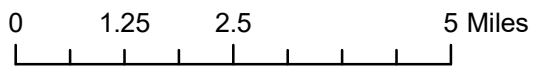


Legend

- Proposed C1 Waters
- C2 Waters (non-C1, non-FW)
- FW1 Waters
- Existing C1s
- Watersheds (DEPHUC14)
- Counties

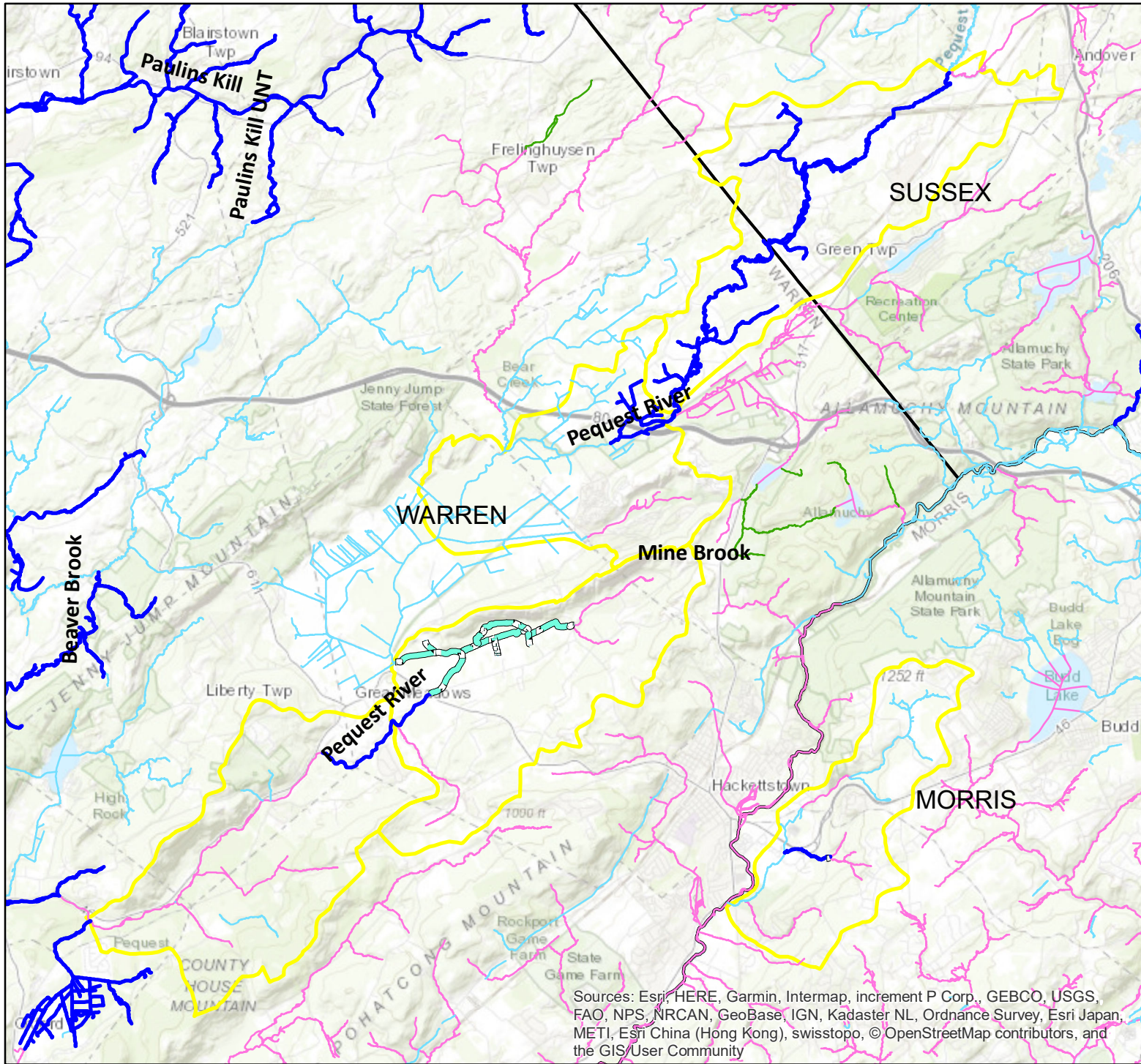


Sources: Esri, HERE, Garmin, Intermap, increment P Corp., GEBCO, USGS, FAO, NPS, NRCAN, GeoBase, IGN, Kadaster NL, Ordnance Survey, Esri Japan, METI, Esri China (Hong Kong), swisstopo, © OpenStreetMap contributors, and the GIS User Community



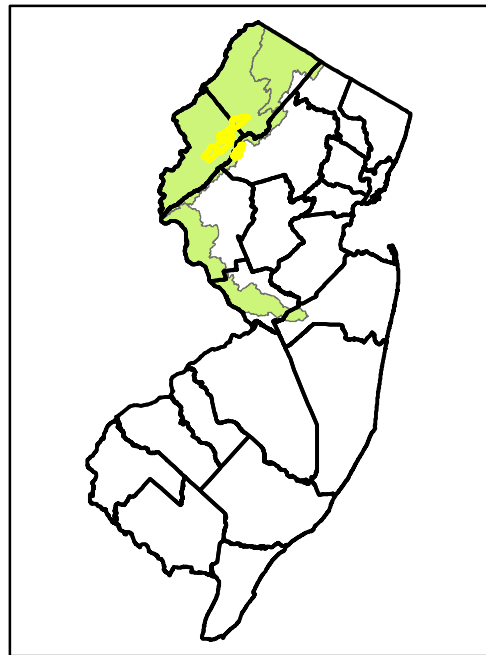
Data Source: NJDEP Bureau of GIS

2019 Proposed Category One Waters - Pequest River and Mine Brook

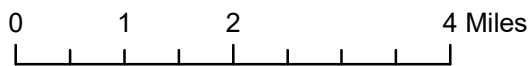


Legend

- Protected Tributaries
- Proposed C1 Waters
- C2 Waters (non-C1, non-FW1)
- FW1 Waters
- Existing C1s (300-ft Buffer Applies)
- Watersheds (DEPHUC14)
- Counties

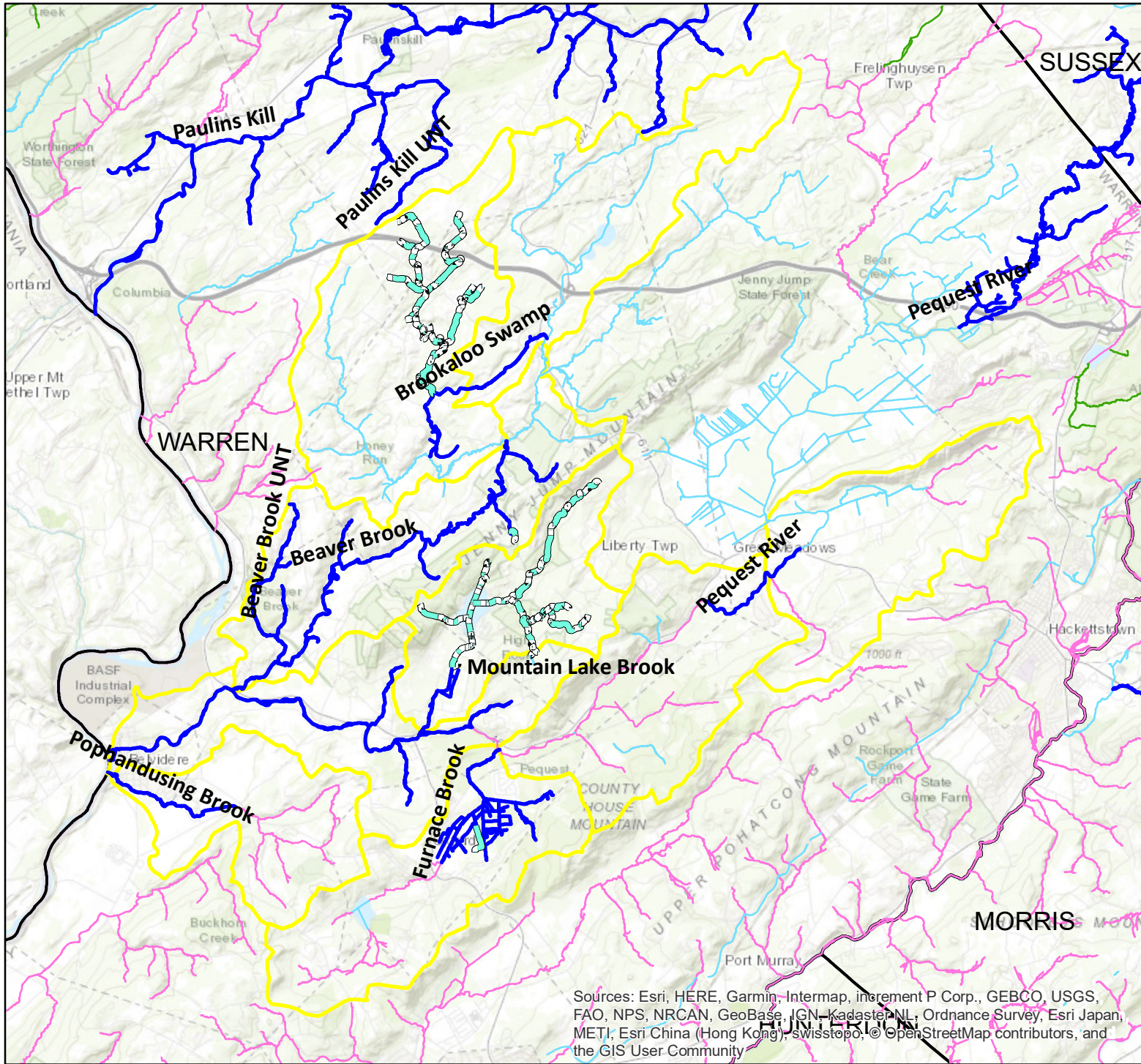


Sources: Esri, HERE, Garmin, Intermap, increment P Corp., GEBCO, USGS, FAO, NPS, NRCAN, GeoBase, IGN, Kadaster NL, Ordnance Survey, Esri Japan, METI, Esri China (Hong Kong), swisstopo, © OpenStreetMap contributors, and the GIS/User Community

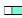








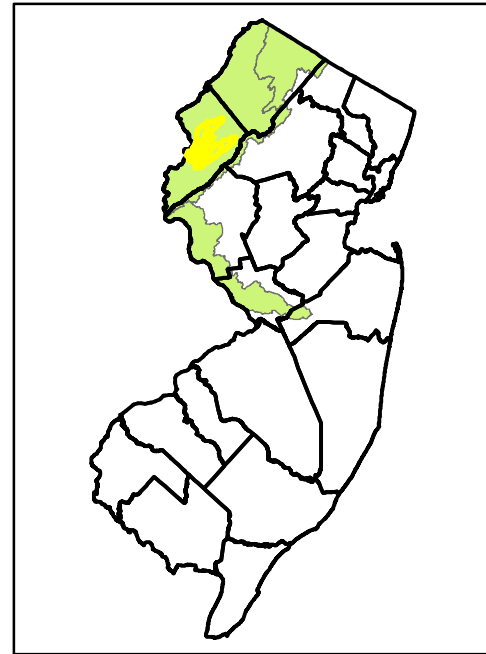
Data Source: NJDEP Bureau of GIS

2019 Proposed Category One Waters - Brookaloo Swamp, Pequest River, Pophandusing Brook, Beaver Brook, Mountain Lake Brook, and Furnace Brook

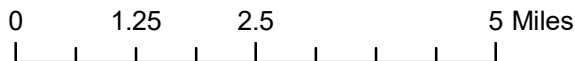


Legend

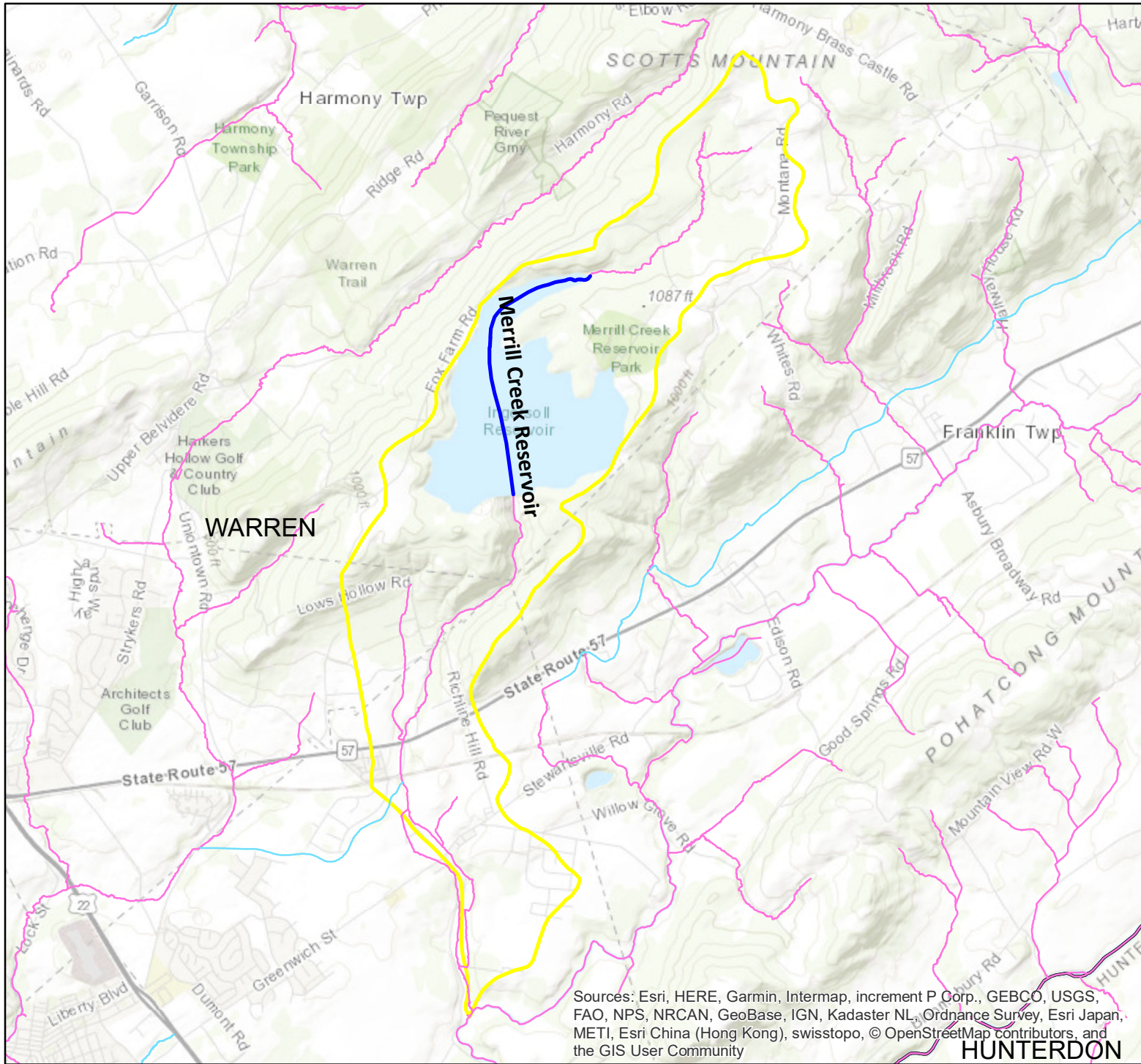
-  Protected Tributaries
-  Proposed C1 Waters
-  C2 Waters (non-C1, non-FW1)
-  FW1 Waters
-  Existing C1s
-  Watersheds (DEPHUC14)
-  Counties



Sources: Esri, HERE, Garmin, Intermap, increment P Corp., GEBCO, USGS, FAO, NPS, NRCAN, GeoBase, IGN, Kadaster NL, Ordnance Survey, Esri Japan, METI, Esri China (Hong Kong), swisstopo, © OpenStreetMap contributors, and the GIS User Community

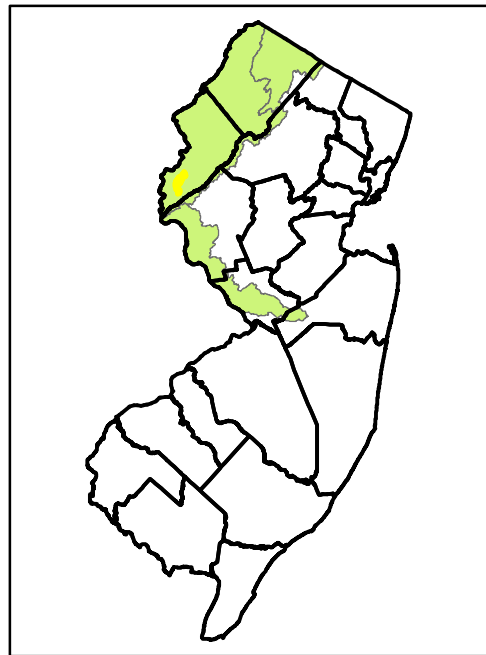


2019 Proposed Category One Waters - Merrill Creek Reservoir

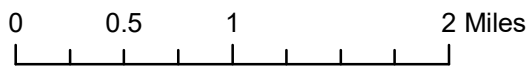


Legend

- Proposed C1 Waters
- C2 Waters (non-C1, non-FW1)
- FW1 Waters
- Existing C1s
- Watersheds (DEPHUC14)
- Counties

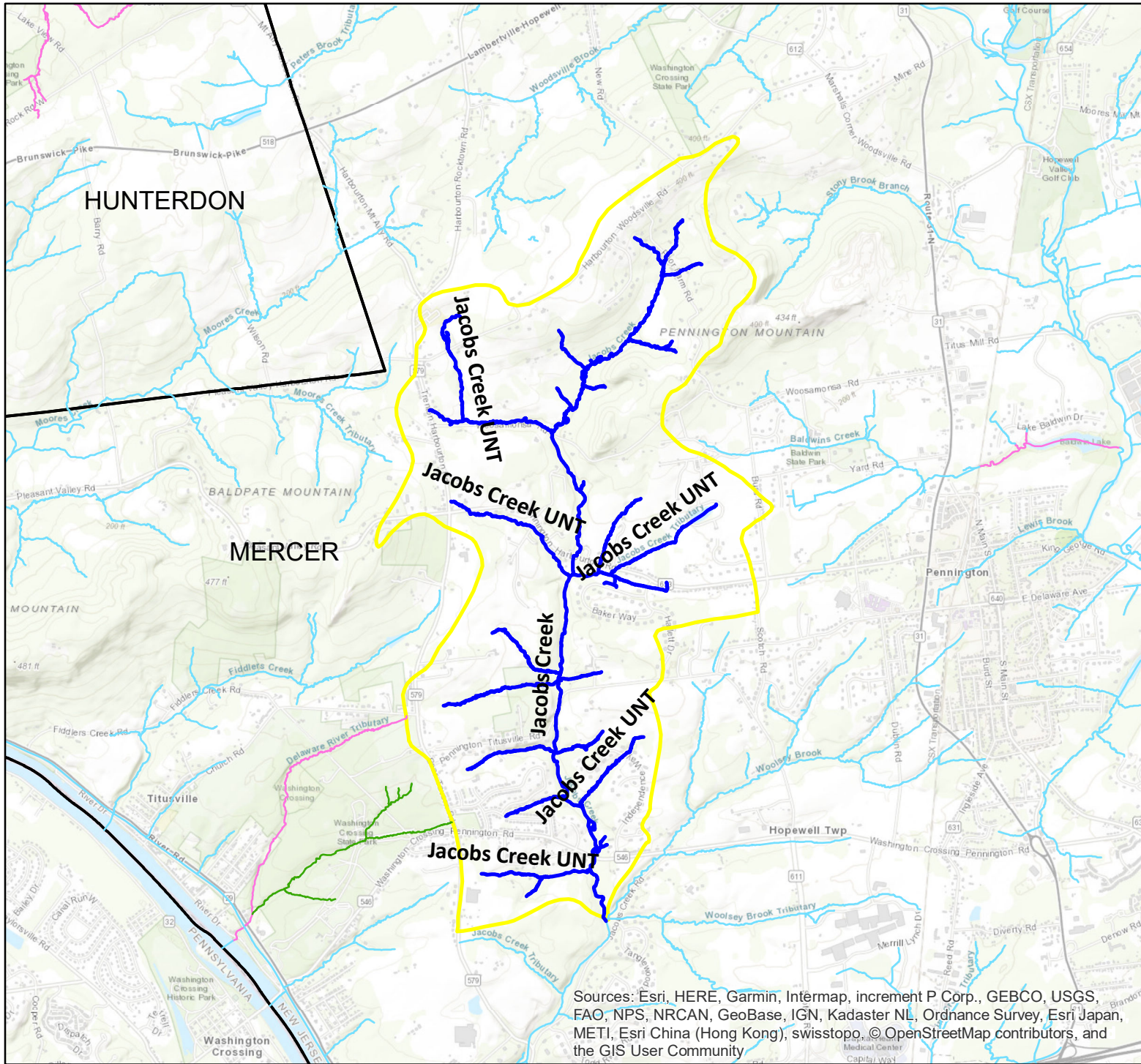


Sources: Esri, HERE, Garmin, Intermap, increment P Corp., GEBCO, USGS, FAO, NPS, NRCAN, GeoBase, IGN, Kadaster NL, Ordnance Survey, Esri Japan, METI, Esri China (Hong Kong), swisstopo, © OpenStreetMap contributors, and the GIS User Community



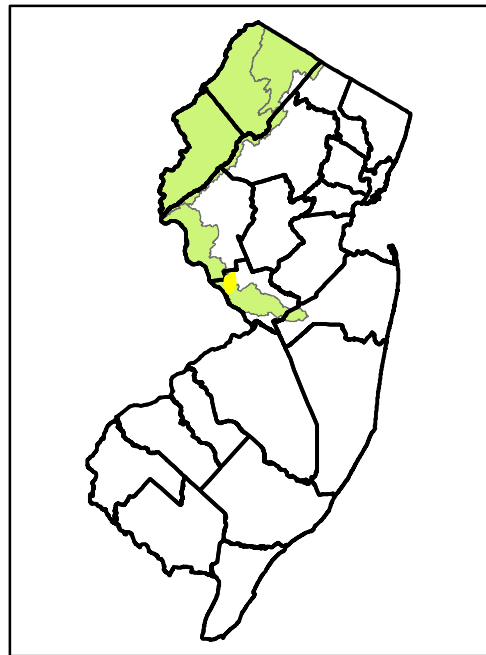
Data Source: NJDEP Bureau of GIS

2019 Proposed Category One Waters - Jacobs Creek

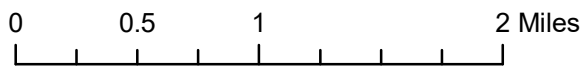


Legend

- Proposed C1 Waters
- C2 Waters (non-C1, non-FW1)
- FW1 Waters
- Existing C1s
- Watersheds (DEPHUC14)
- Counties

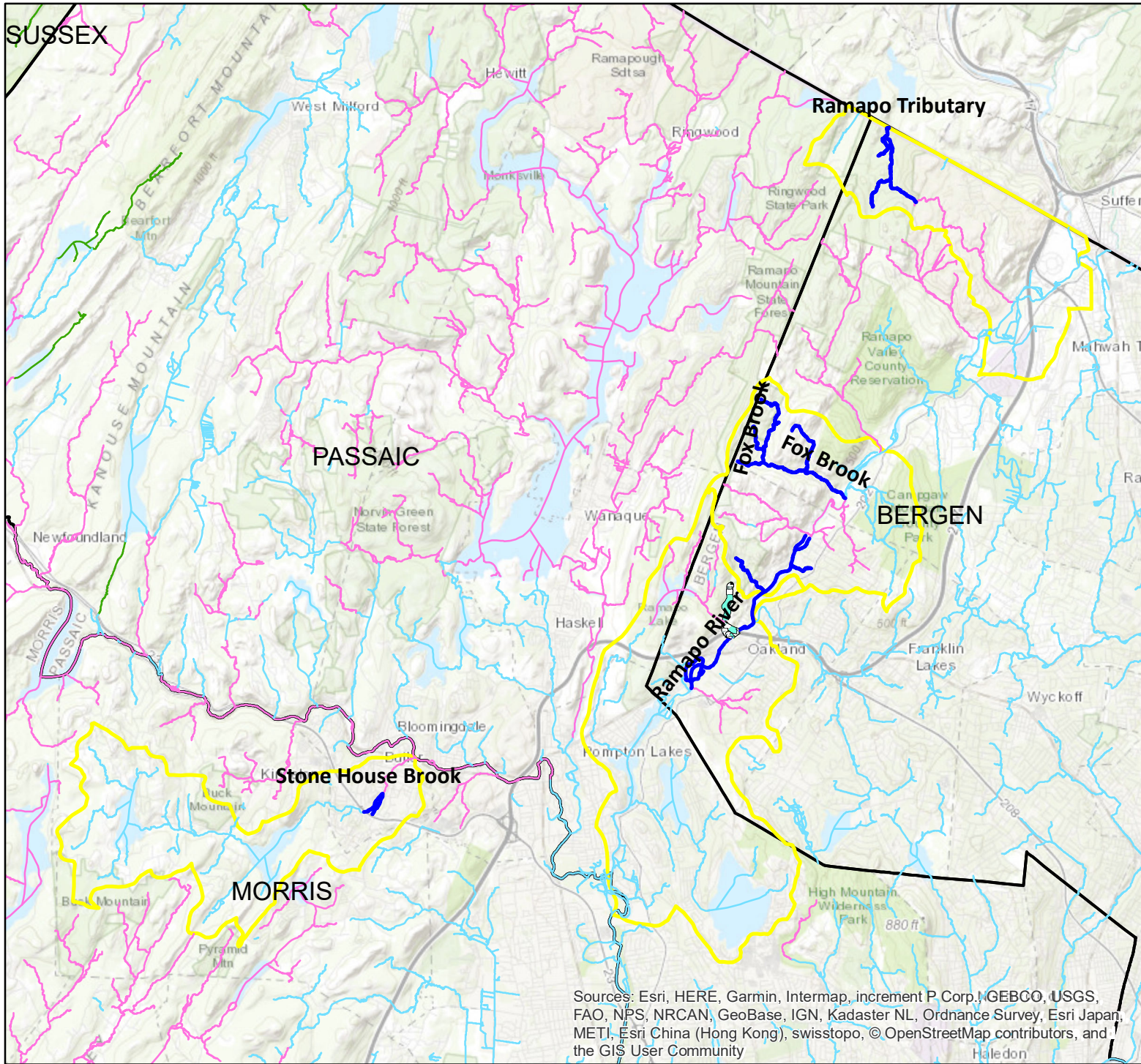


Sources: Esri, HERE, Garmin, Intermap, increment P Corp., GEBCO, USGS, FAO, NPS, NRCAN, GeoBase, IGN, Kadaster NL, Ordnance Survey, Esri Japan, METI, Esri China (Hong Kong), swisstopo, © OpenStreetMap contributors, and the GIS User Community










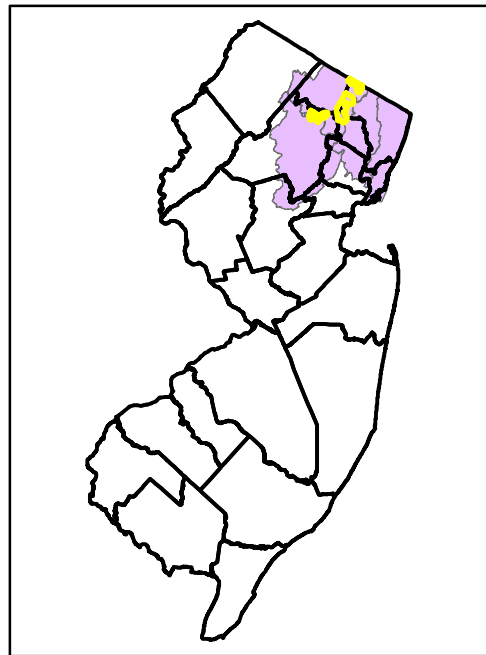
Data Source: NJDEP Bureau of GIS

2019 Proposed Category One Waters - Ramapo River, Fox Brook, and Stone House Brook

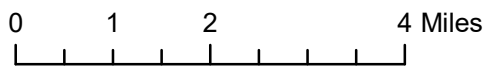


Legend

-  Protected Tributaries
-  Proposed C1 Waters
-  C2 Waters (non-C1, non-FW1)
-  FW1 Waters
-  Existing C1s
-  Watersheds (DEPHUC14)
-  Counties

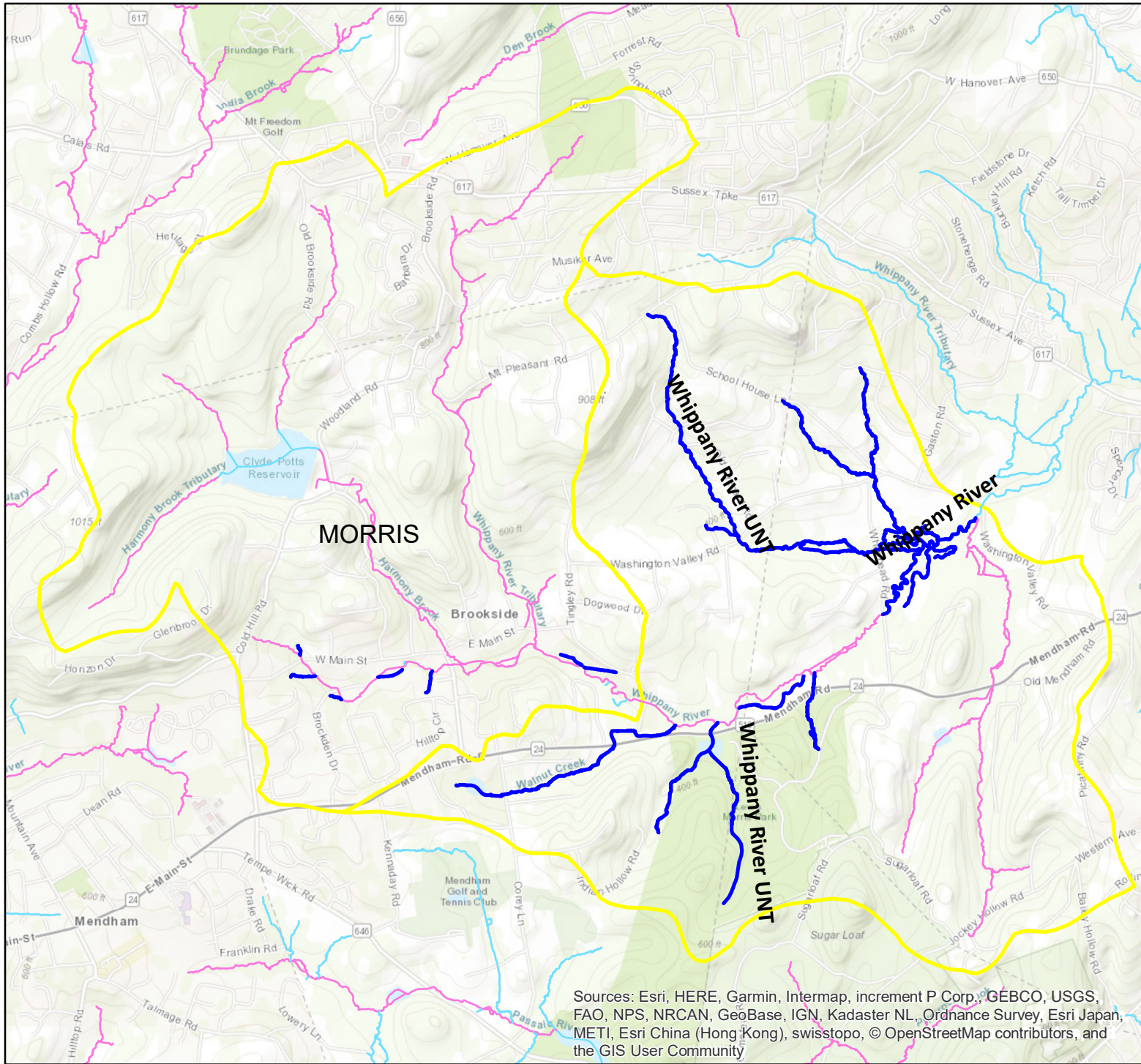


Sources: Esri, HERE, Garmin, Intermap, increment P Corp., GEBCO, USGS, FAO, NPS, NRCAN, GeoBase, IGN, Kadaster NL, Ordnance Survey, Esri Japan, METI, Esri China (Hong Kong), swisstopo, © OpenStreetMap contributors, and the GIS User Community



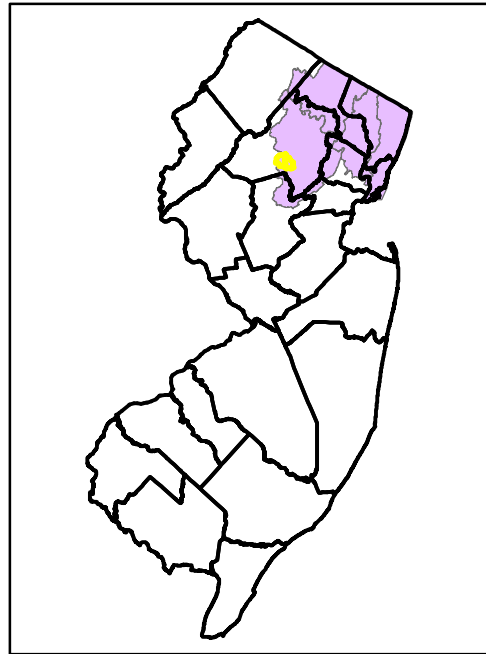
Data Source: NJDEP Bureau of GIS

2019 Proposed Category One Waters - Whippany River



Legend

- Proposed C1 Waters
- C2 Waters (non-C1, non-FW1)
- FW1 Waters
- Existing C1s
- Watersheds (DEPHUC14)
- Counties

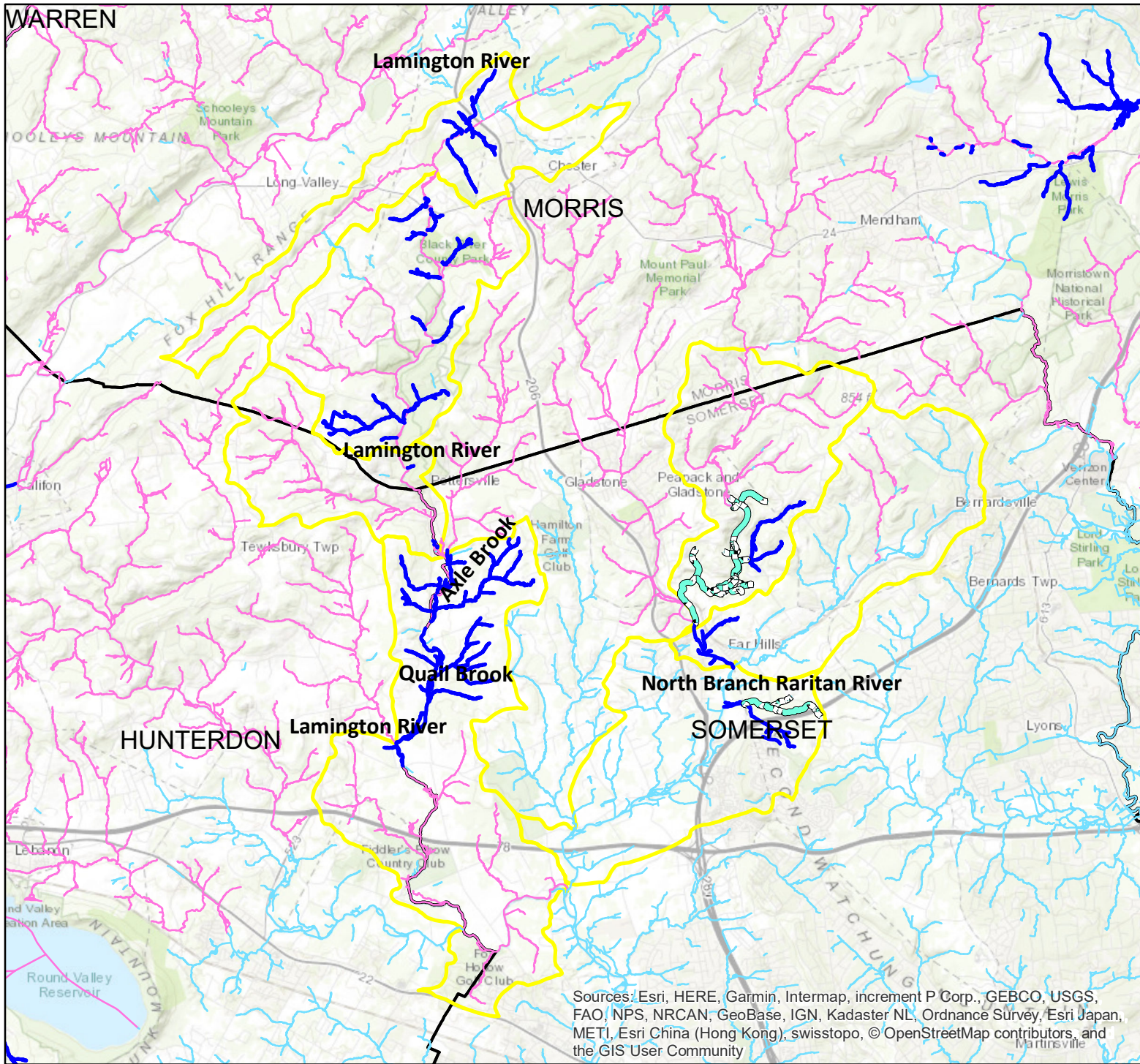


Sources: Esri, HERE, Garmin, Intermap, increment P Corp., GEBCO, USGS, FAO, NPS, NRCAN, GeoBase, IGN, Kadaster NL, Ordnance Survey, Esri Japan, METI, Esri China (Hong Kong), swisstopo, © OpenStreetMap contributors, and the GIS User Community







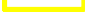


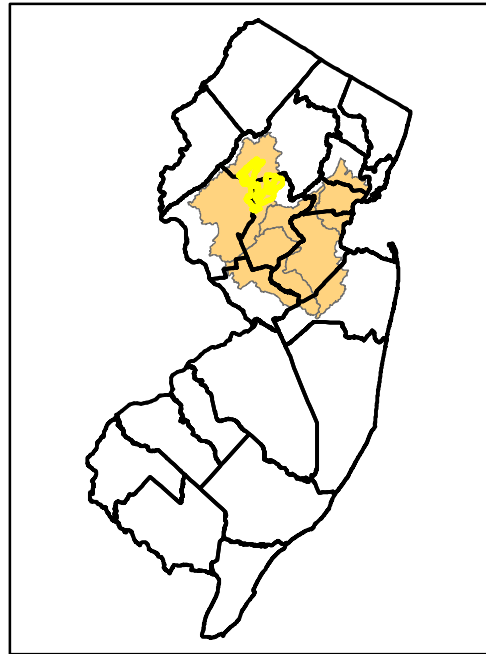
Data Source: NJDEP Bureau of GIS

2019 Proposed Category One Waters - Lamington River and North Branch Raritan River

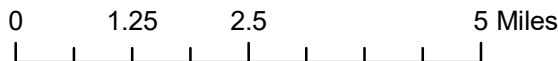


Legend

-  Protected Tributaries
-  Proposed C1 Waters
-  C2 Waters (non-C1, non-FW1)
-  FW1 Waters
-  Existing C1s
-  Watersheds (DEPHUC14)
-  Counties

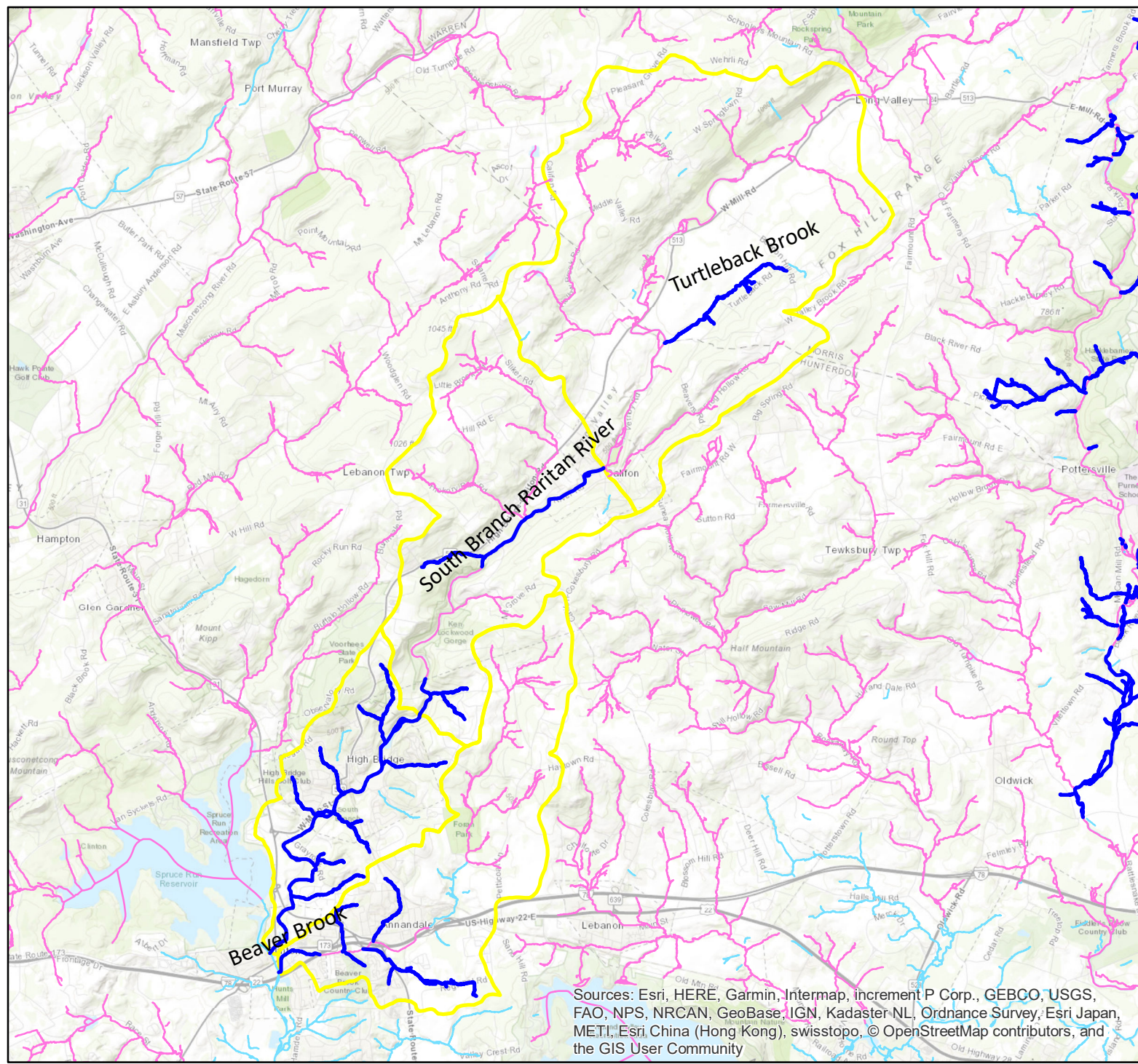


Sources: Esri, HERE, Garmin, Intermap, increment P Corp., GEBCO, USGS, FAO, NPS, NRCAN, GeoBase, IGN, Kadaster NL, Ordnance Survey, Esri Japan, METI, Esri China (Hong Kong), swisstopo, © OpenStreetMap contributors, and the GIS User Community



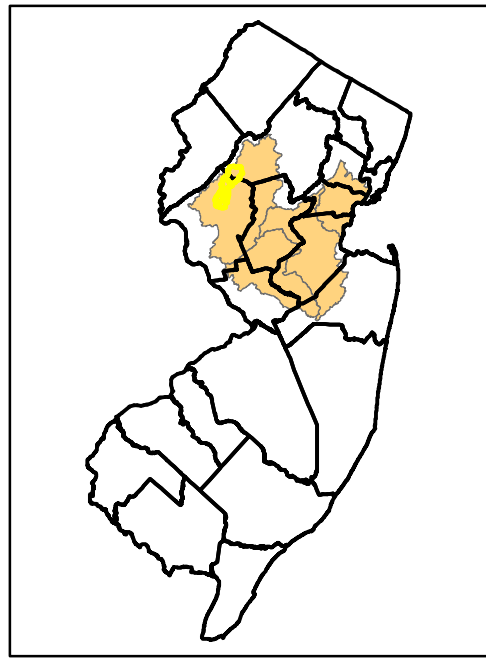
Data Source: NJDEP Bureau of GIS

2019 Proposed Category One Waters - Beaver Brook, South Branch Raritan River, and Turtleback Brook

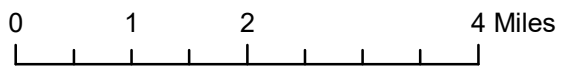


Legend

- Proposed C1 Waters
- C2 Waters (non-C1, non-FW1)
- FW1 Waters
- Existing C1s (300-ft Buffer Applies)
- Watersheds (DEPHUC14)

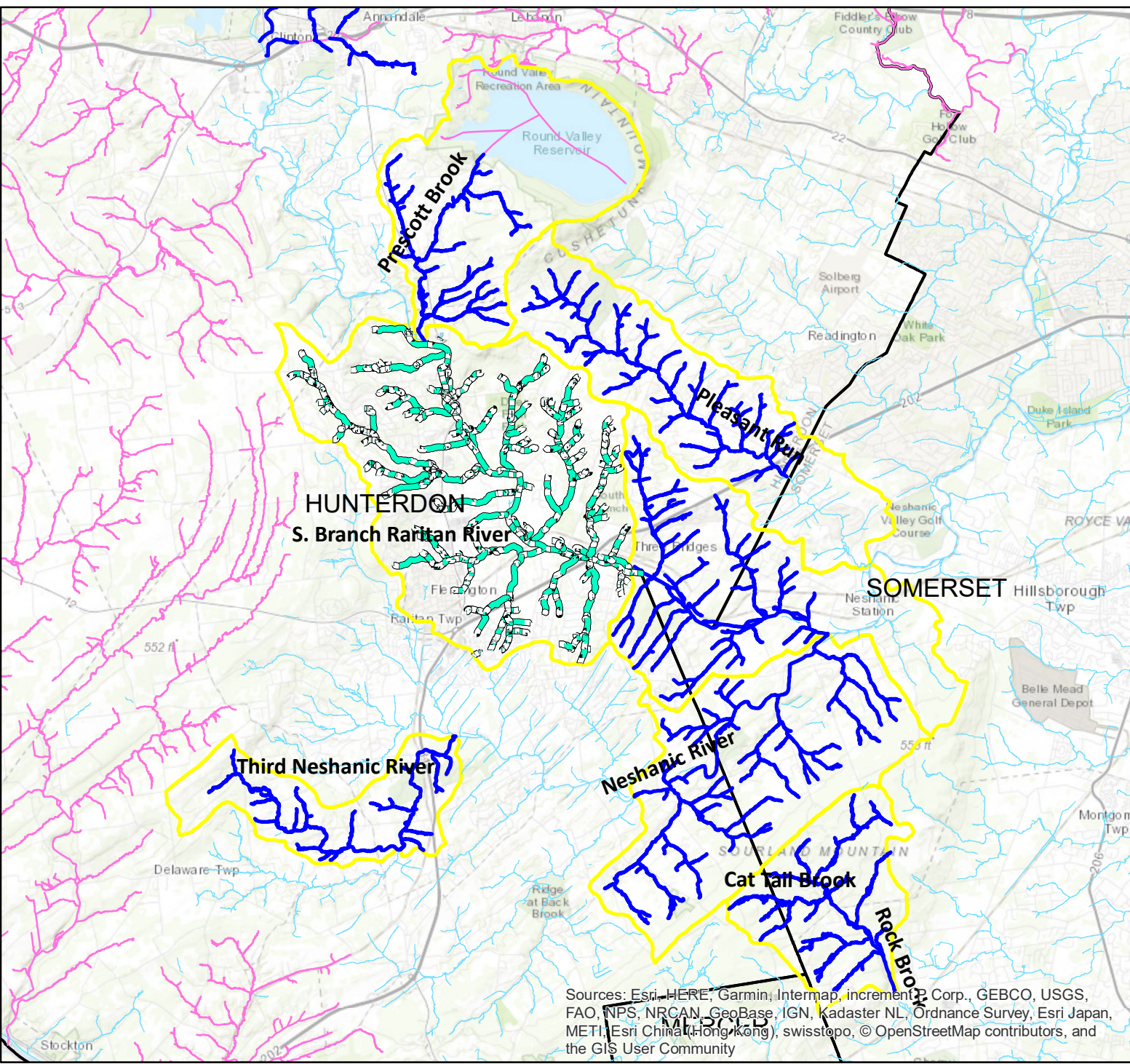


Sources: Esri, HERE, Garmin, Intermap, increment P Corp., GEBCO, USGS, FAO, NPS, NRCAN, GeoBase, IGN, Kadaster NL, Ordnance Survey, Esri Japan, METI, Esri China (Hong Kong), swisstopo, © OpenStreetMap contributors, and the GIS User Community










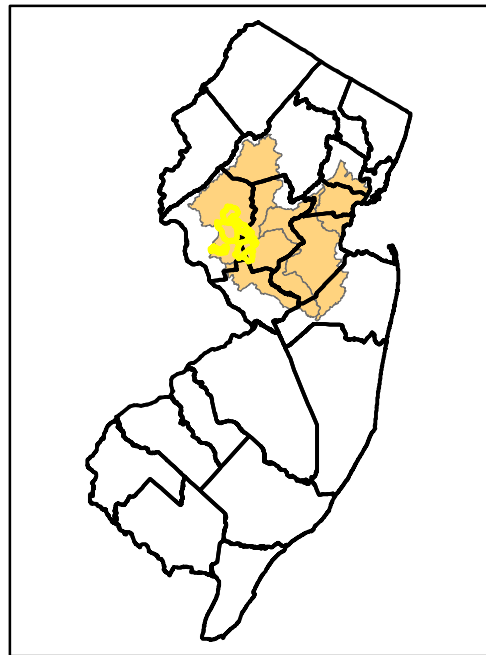
Data Source: NJDEP Bureau of GIS

2019 Proposed Category One Waters - Prescott Brook, Pleasant Run, S. Branch Raritan River, Rock Brook, and Neshanic Rivers

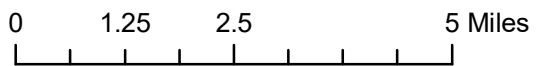


Legend

-  Protected Tributaries
-  Proposed C1 Waters
-  C2 Waters (non-C1, non-FW1)
-  FW1 Waters
-  Existing C1s (300-ft Buffer Applies)
-  Watersheds (DEPHUC14)
-  Counties

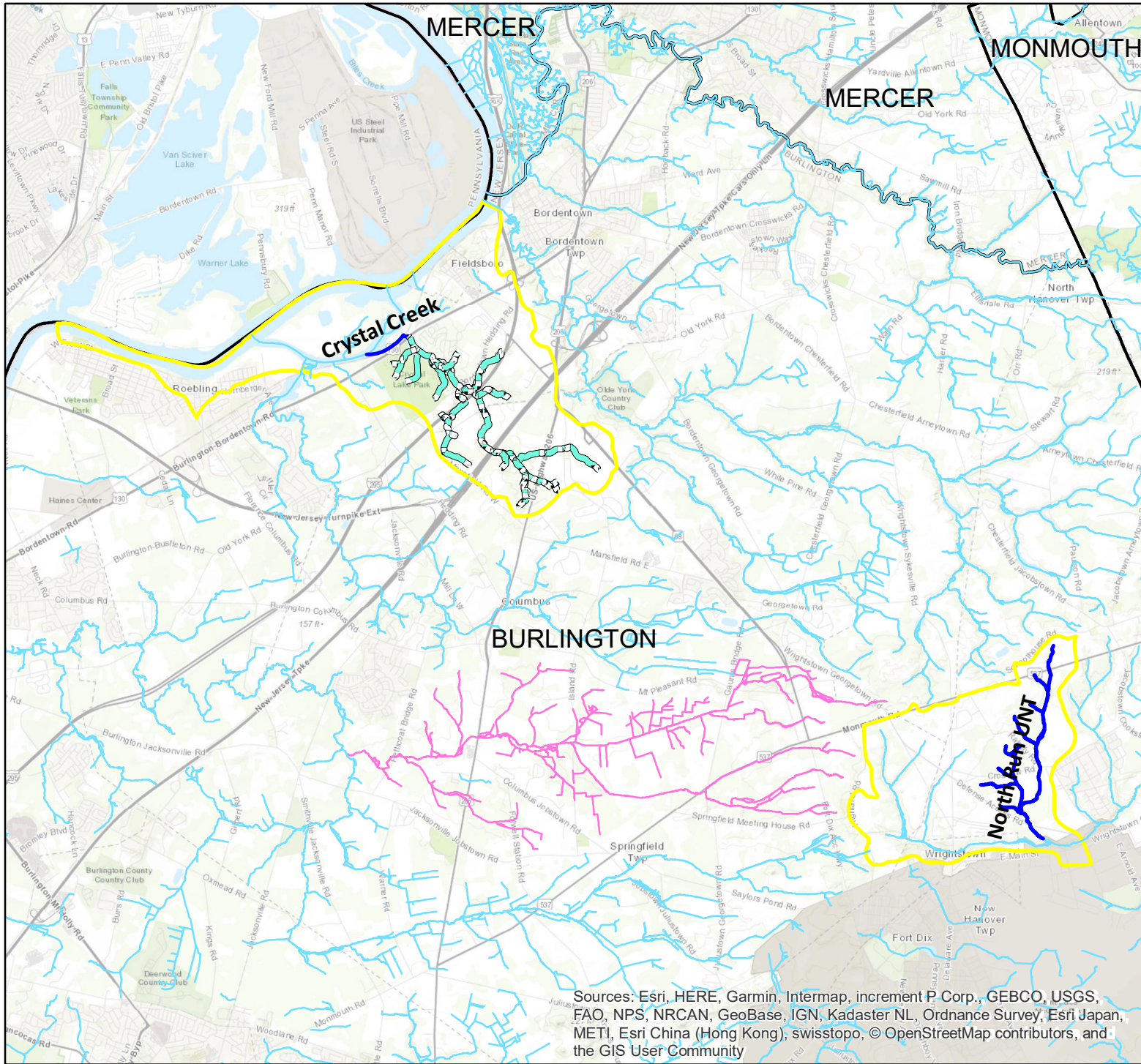


Sources: Esri, HERE, Garmin, Intermap, increment P Corp., GEBCO, USGS, FAO, NPS, NRCAN, GeoBase, IGN, Kadaster NL, Ordnance Survey, Esri Japan, METI, Esri China (Hong Kong), swisstopo, © OpenStreetMap contributors, and the GIS User Community

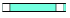








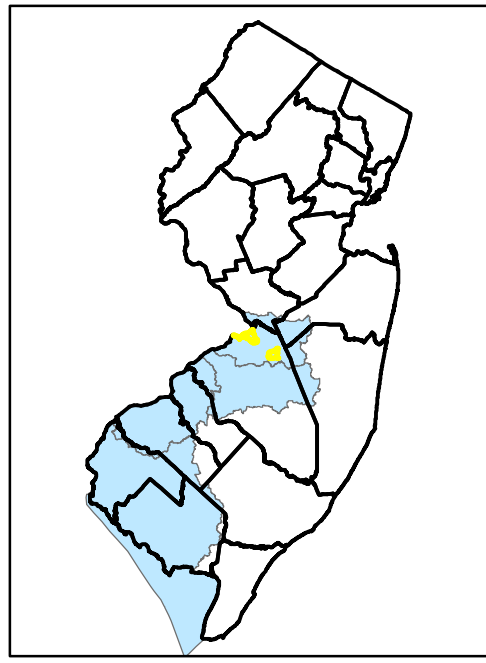
Data Source: NJDEP Bureau of GIS

2019 Proposed Category One Waters - Crystal Creek and North Run

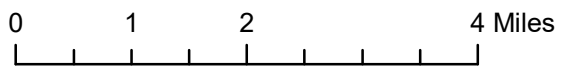


Legend

-  Protected Tributaries
-  Proposed C1 Waters
-  C2 Waters (non-C1, non-FW1)
-  FW1 Waters
-  Existing C1s (300-ft Buffer Applies)
-  Watersheds (DEPHUC14)
-  Counties

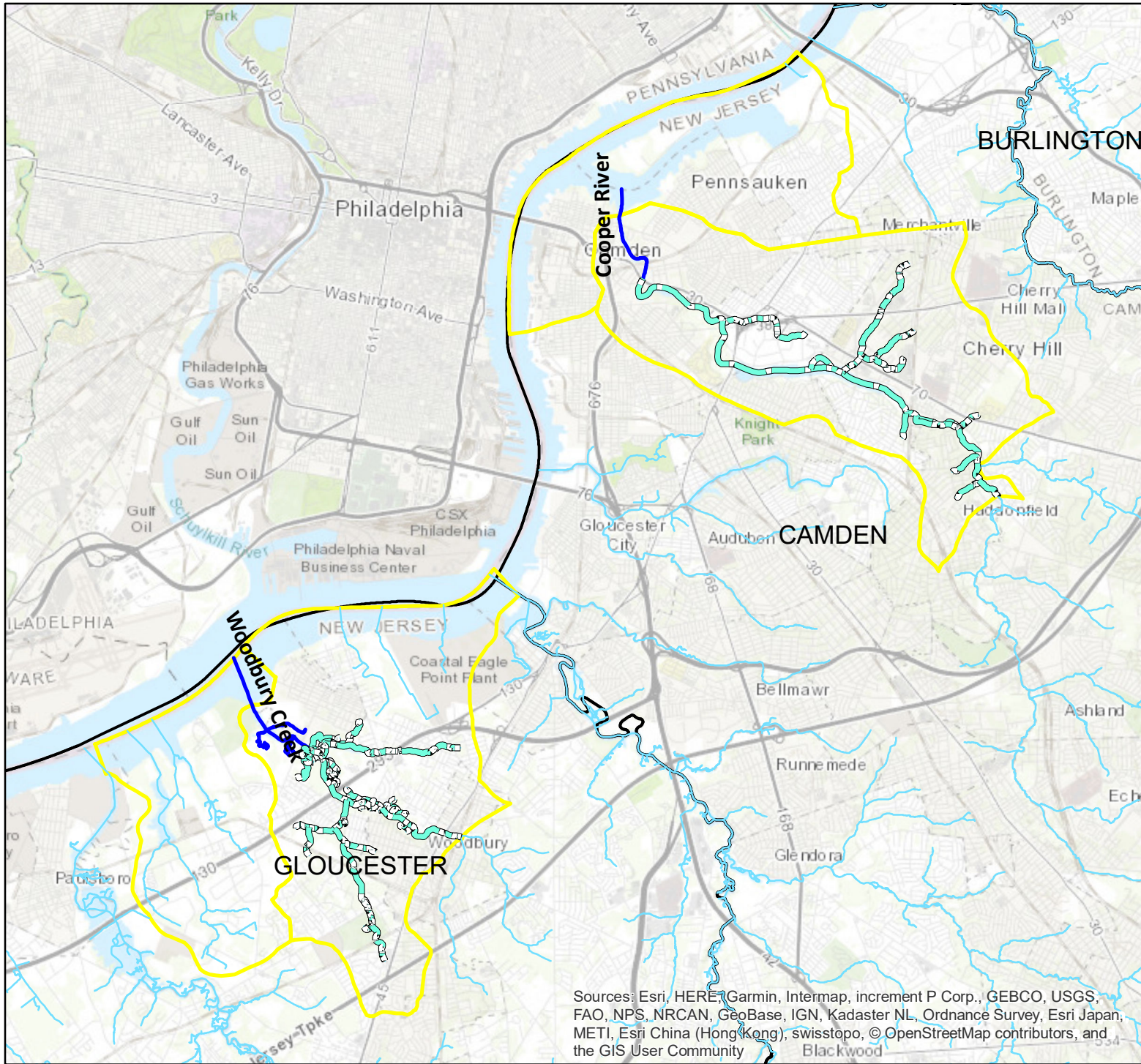


Sources: Esri, HERE, Garmin, Intermap, increment P Corp., GEBCO, USGS, FAO, NPS, NRCAN, GeoBase, IGN, Kadaster NL, Ordnance Survey, Esri Japan, METI, Esri China (Hong Kong), swisstopo, © OpenStreetMap contributors, and the GIS User Community



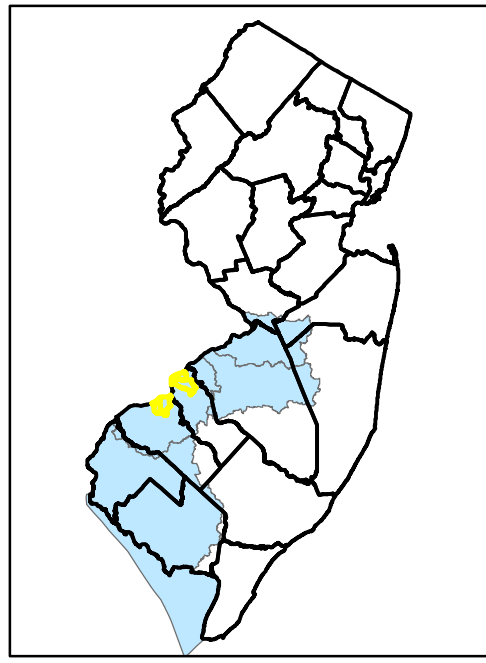
Data Source: NJDEP Bureau of GIS

2019 Proposed Category One Waters - Cooper River and Woodbury Creek

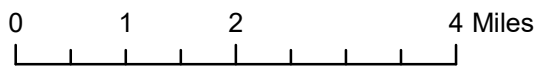


Legend

- Protected Tributaries
- Proposed C1 Waters
- C2 Waters (non-C1, non-FW1)
- FW1 Waters
- Existing C1s (300-ft Buffer Applies)
- Watersheds (DEPHUC14)
- Counties

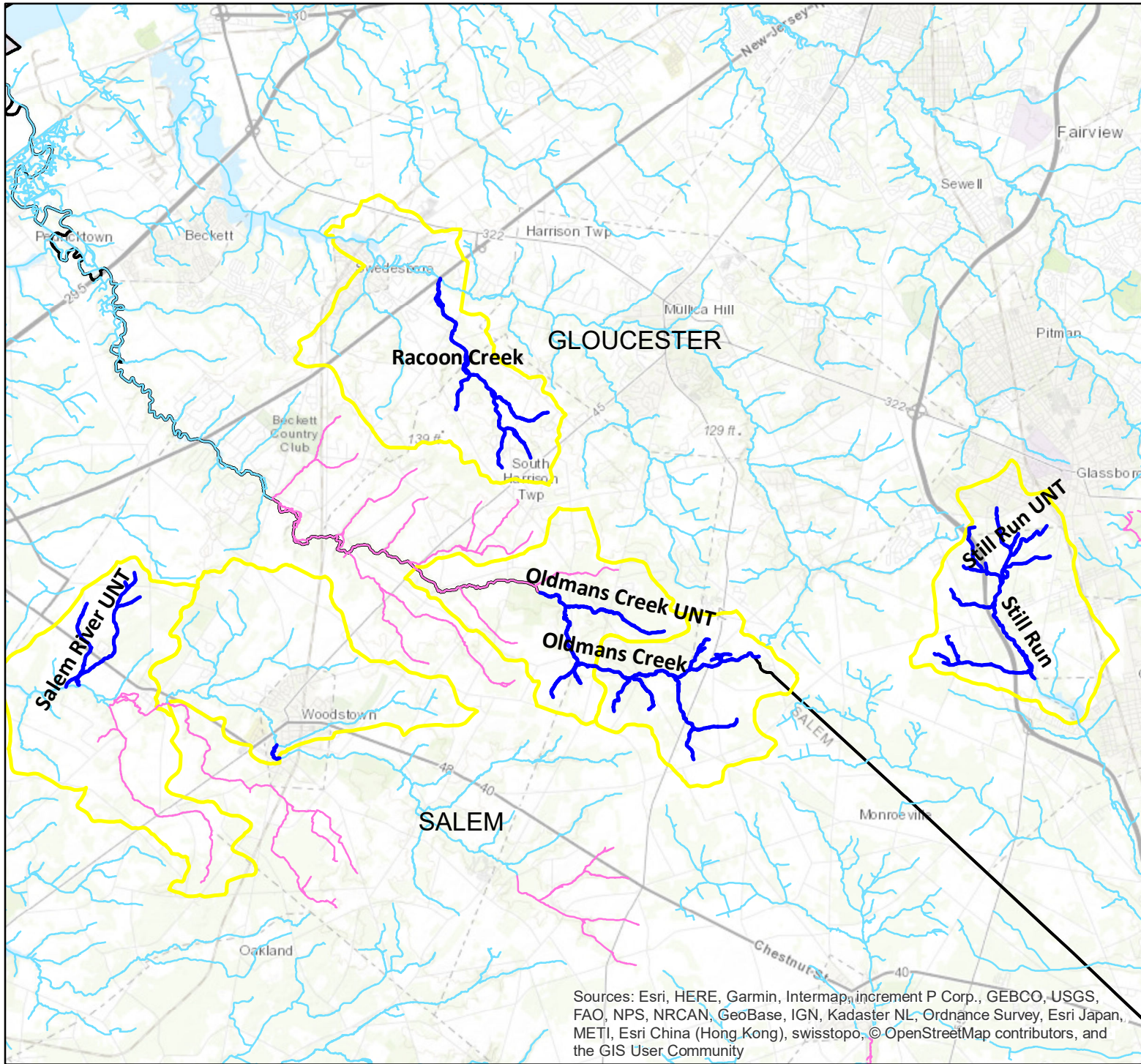


Sources: Esri, HERE, Garmin, Intermap, increment P Corp., GEBCO, USGS, FAO, NPS, NRCAN, GeoBase, IGN, Kadaster NL, Ordnance Survey, Esri Japan, METI, Esri China (Hong Kong), swisstopo, © OpenStreetMap contributors, and the GIS User Community



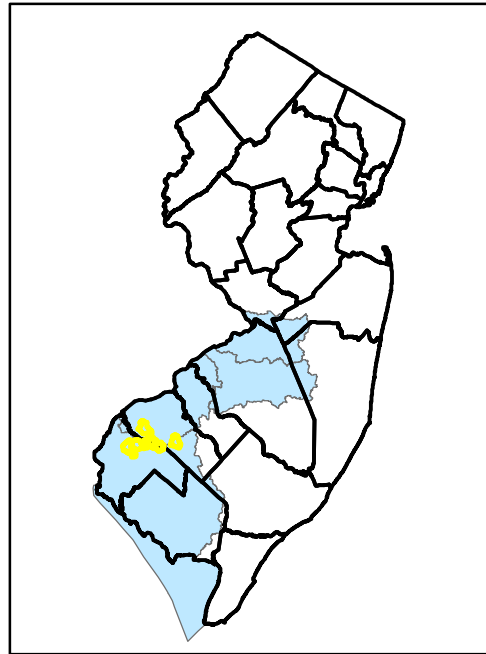
Data Source: NJDEP Bureau of GIS

2019 Proposed Category One Waters - Salem River, Raccoon Creek, Still Run, and Oldmans Creek

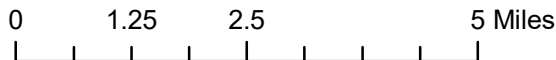


Legend

- Proposed C1 Waters
- C2 Waters (non-C1, non-FW1)
- FW1 Waters
- Existing C1s (300-ft Buffer Applies)
- Watersheds (DEPHUC14)
- Counties

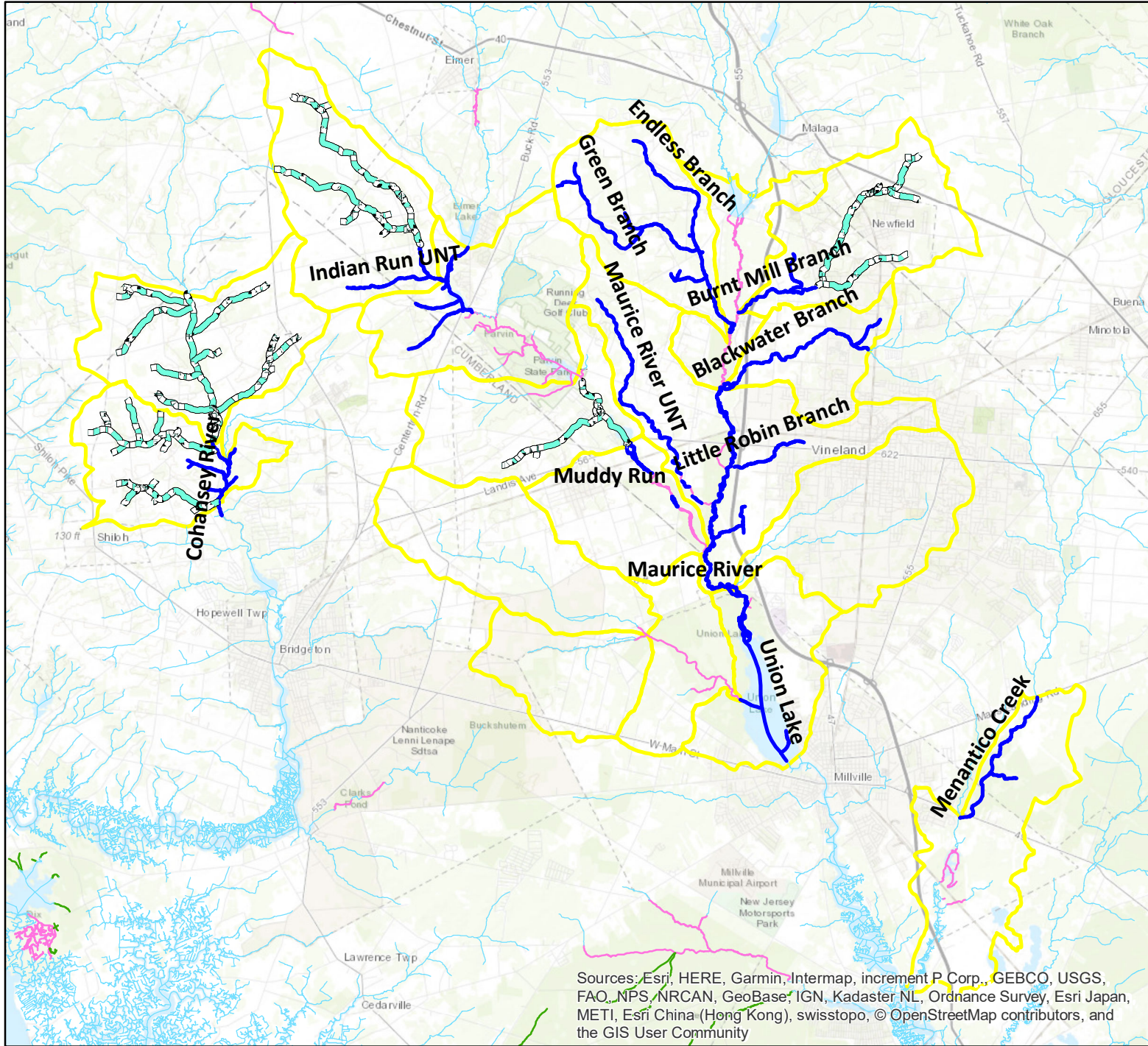


Sources: Esri, HERE, Garmin, Intermap, increment P Corp., GEBCO, USGS, FAO, NPS, NRCAN, GeoBase, IGN, Kadaster NL, Ordnance Survey, Esri Japan, METI, Esri China (Hong Kong), swisstopo, © OpenStreetMap contributors, and the GIS User Community









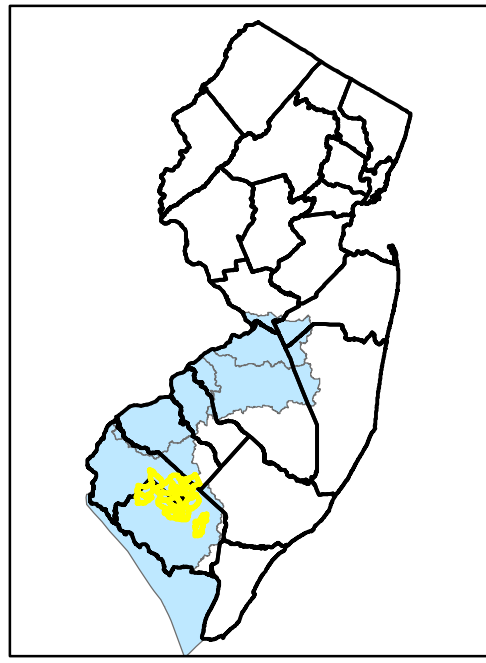
Data Source: NJDEP Bureau of GIS

2019 Proposed Category One Waters - Cohansy River, Maurice River, Muddy Run, Green Branch, Burnt Mill Branch, Blackwater Branch, Little Robin Branch, and Menantico Creek

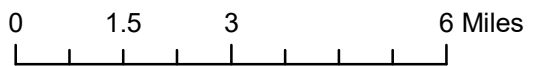


Legend

-  Protected Tributaries
-  Proposed C1 Waters
-  C2 Waters (non-C1, non-FW1)
-  FW1 Waters
-  Existing C1s (300-ft Buffer Applies)
-  Watersheds (DEPHUC14)

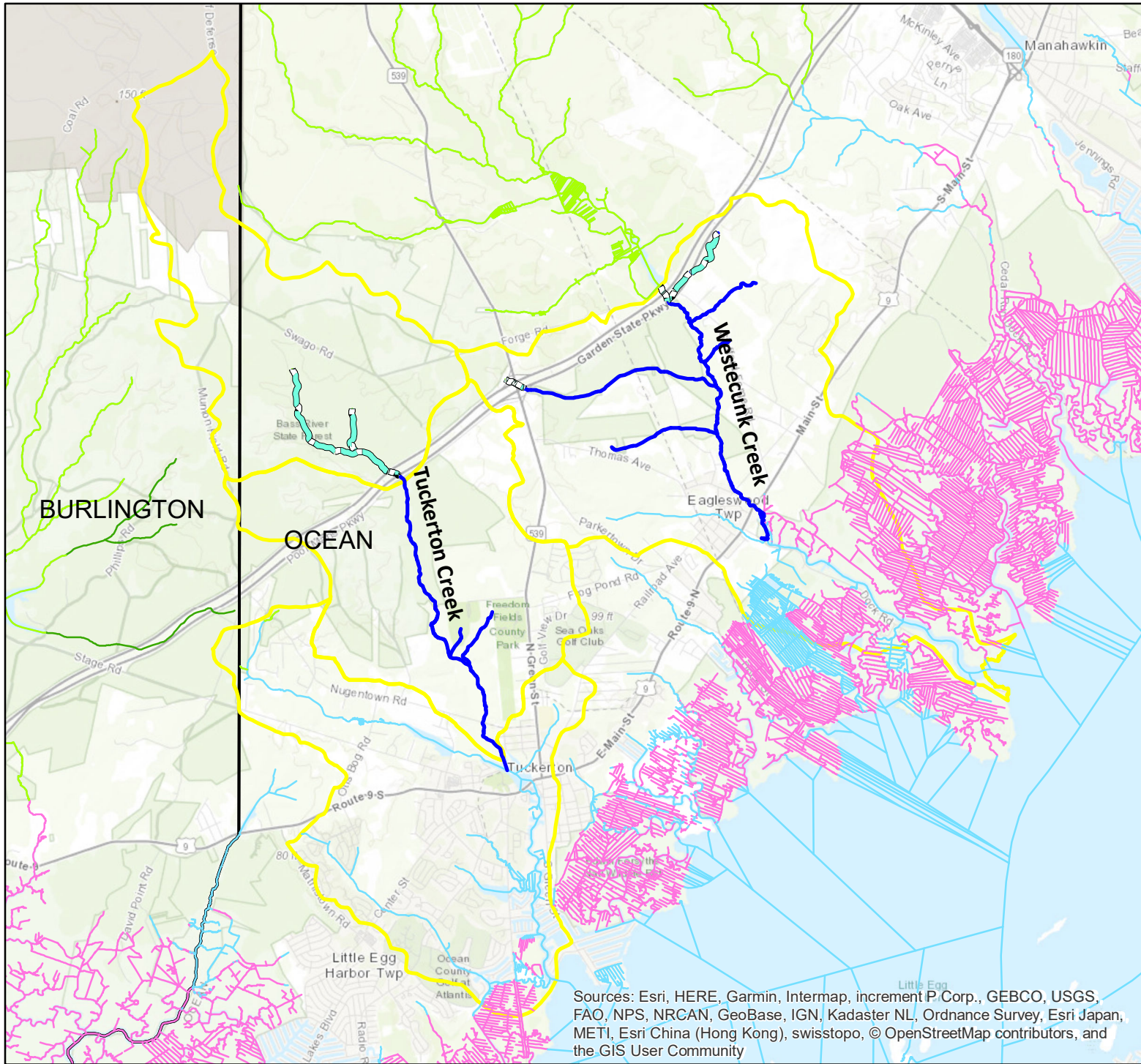


Sources: Esri, HERE, Garmin, Intermap, increment P Corp., GEBCO, USGS, FAO, NPS, NRCAN, GeoBase, IGN, Kadaster NL, Ordnance Survey, Esri Japan, METI, Esri China (Hong Kong), swisstopo, © OpenStreetMap contributors, and the GIS User Community











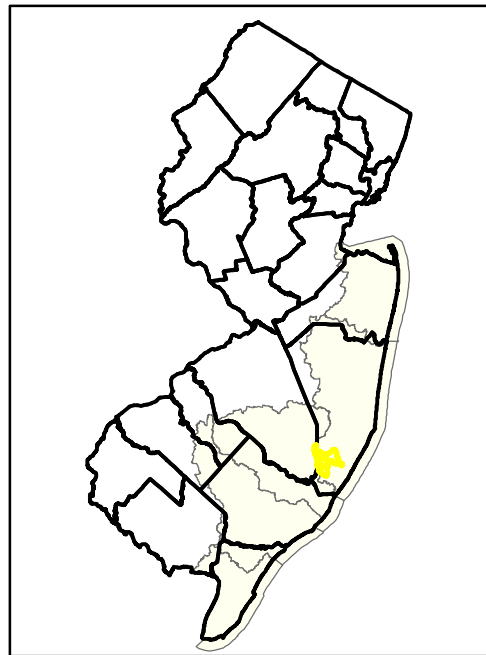
Data Source: NJDEP Bureau of GIS

2019 Proposed Category One Waters - Westcunk Creek and Tuckerton Creek

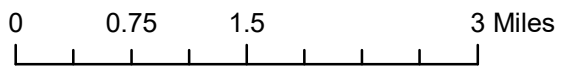


Legend

-  Protected Tributaries
-  Proposed C1 Waters
-  PL Waters
-  C2 Waters (non-C1, non-FW1, non-PL)
-  FW1 Waters
-  Existing C1s (300-ft Buffer Applies)
-  Watersheds (DEPHUC14)
-  Counties

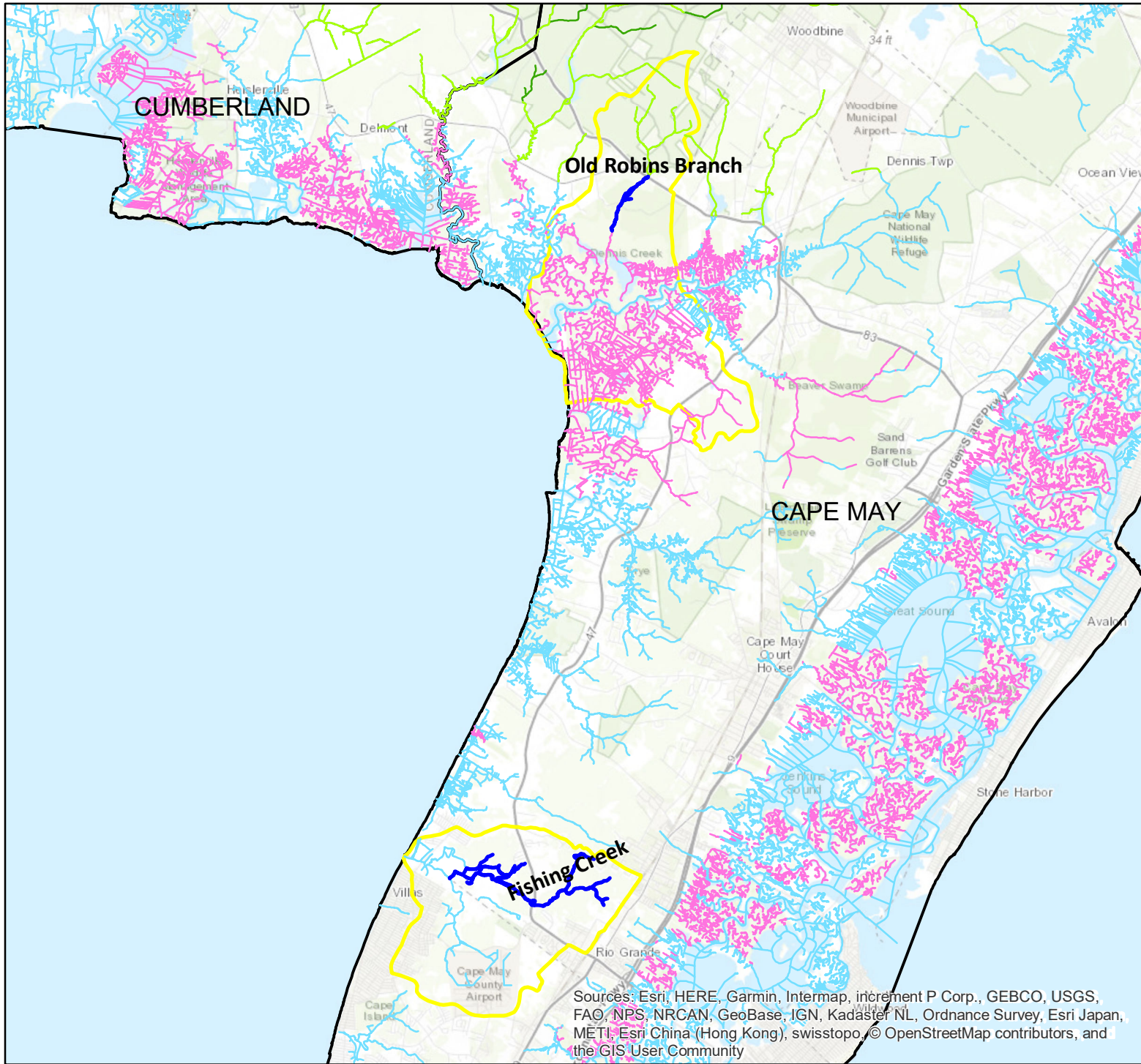


Sources: Esri, HERE, Garmin, Intermap, increment P Corp., GEBCO, USGS, FAO, NPS, NRCAN, GeoBase, IGN, Kadaster NL, Ordnance Survey, Esri Japan, METI, Esri China (Hong Kong), swisstopo, © OpenStreetMap contributors, and the GIS User Community



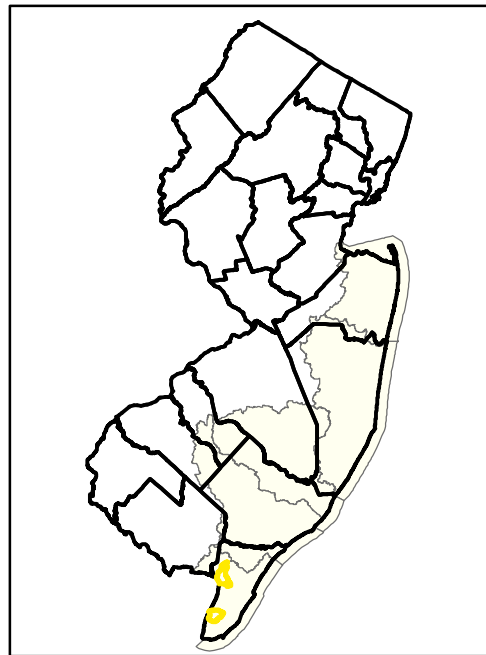
Data Source: NJDEP Bureau of GIS

2019 Proposed Category One Waters - Old Robins Branch and Fishing Creek

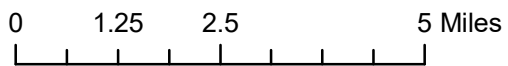


Legend

- Proposed C1 Waters
- PL Waters
- C2 Waters (non-C1, non-FW1, non-PL)
- FW1 Waters
- Existing C1s (300-ft Buffer Applies)
- Watersheds (DEPHUC14)
- Counties



Sources: Esri, HERE, Garmin, Intermap, increment P Corp., GEBCO, USGS, FAO, NPS, NRCAN, GeoBase, IGN, Kadaster NL, Ordnance Survey, Esri Japan, METI, Esri China (Hong Kong), swisstopo, © OpenStreetMap contributors, and the GIS User Community



Data Source: NJDEP Bureau of GIS