

Office of Natural Lands Management Natural Heritage Program



Lupine (*Lupinus perennis*)

Photograph by David Snyder

Office of Natural Lands Management

- Natural Areas Program
- New Jersey Natural Lands Trust
- State Trails Program
- Natural Heritage Program

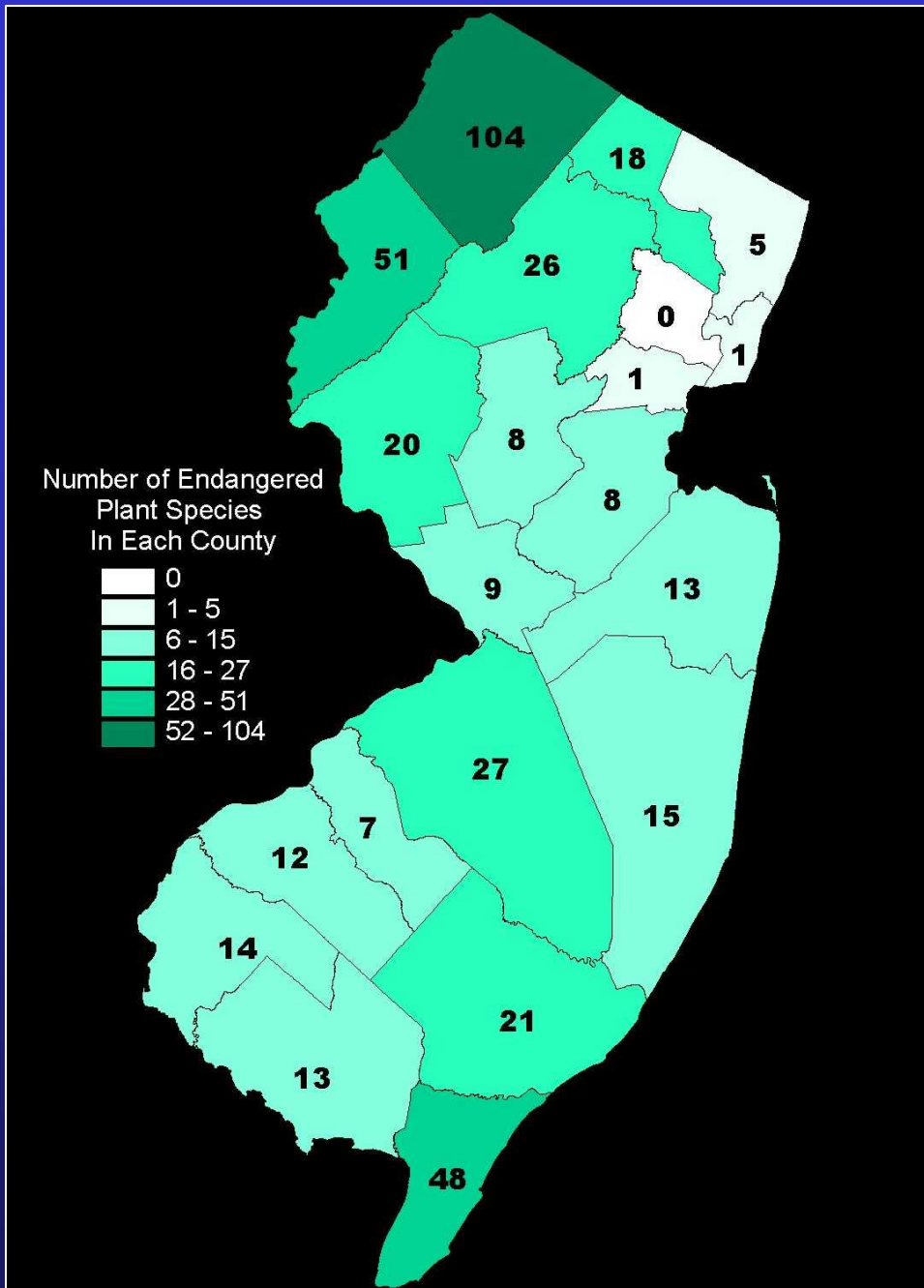
Statutory Purpose

- “to identify the most critically imperiled natural areas in the State and provide detailed up-to-date information on rare species and natural communities to planners, developers, and conservation agencies for use in resource management, environmental impact assessment, and both public and private land protection efforts.”

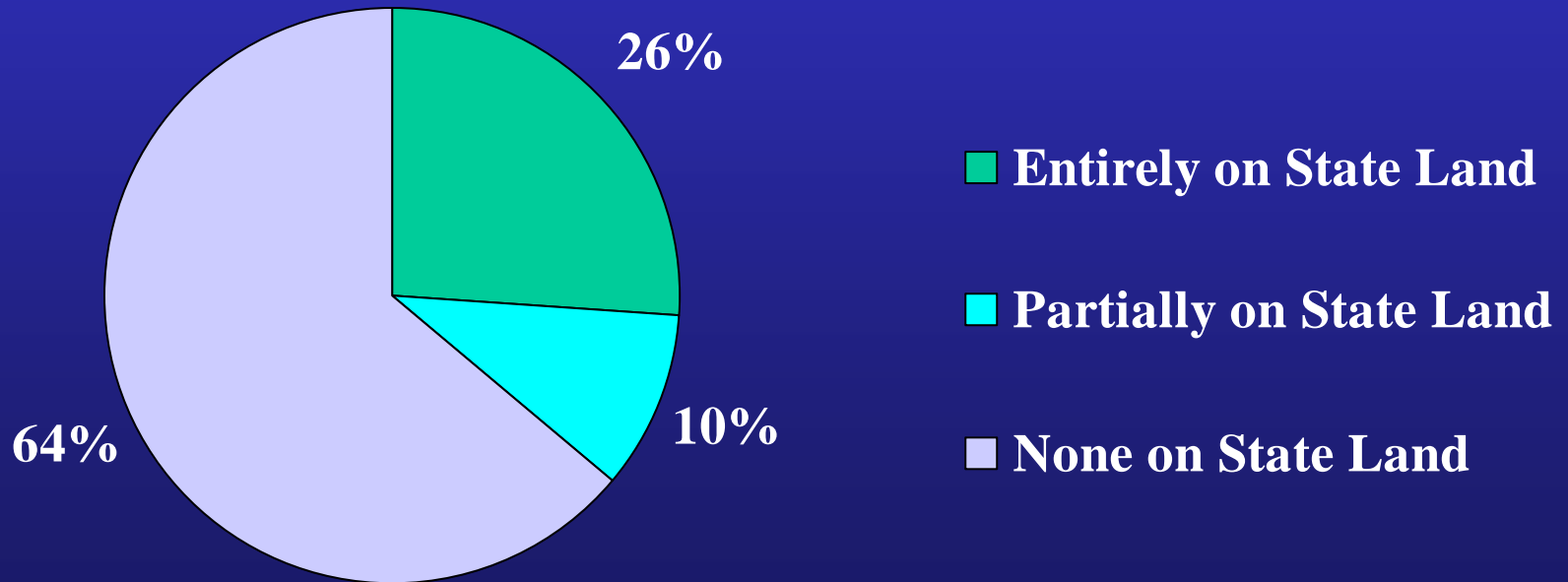
PLANT SPECIES RARITY IN NEW JERSEY

- Number of native plant species **2,134**
- Number of plant species of conservation concern **822**
- Number of State Endangered plant species **339**
- Number of “threatened” plant species **483**
- Number of globally rare plant species **52**
- Number of S1.1 plant species **30**
- Number of federally listed NJ plant species **8**
- Number of plant species endemic to NJ **4**

Diversity of Endangered Plant Species by County



Populations of State Endangered Plants on State and Non-state Lands

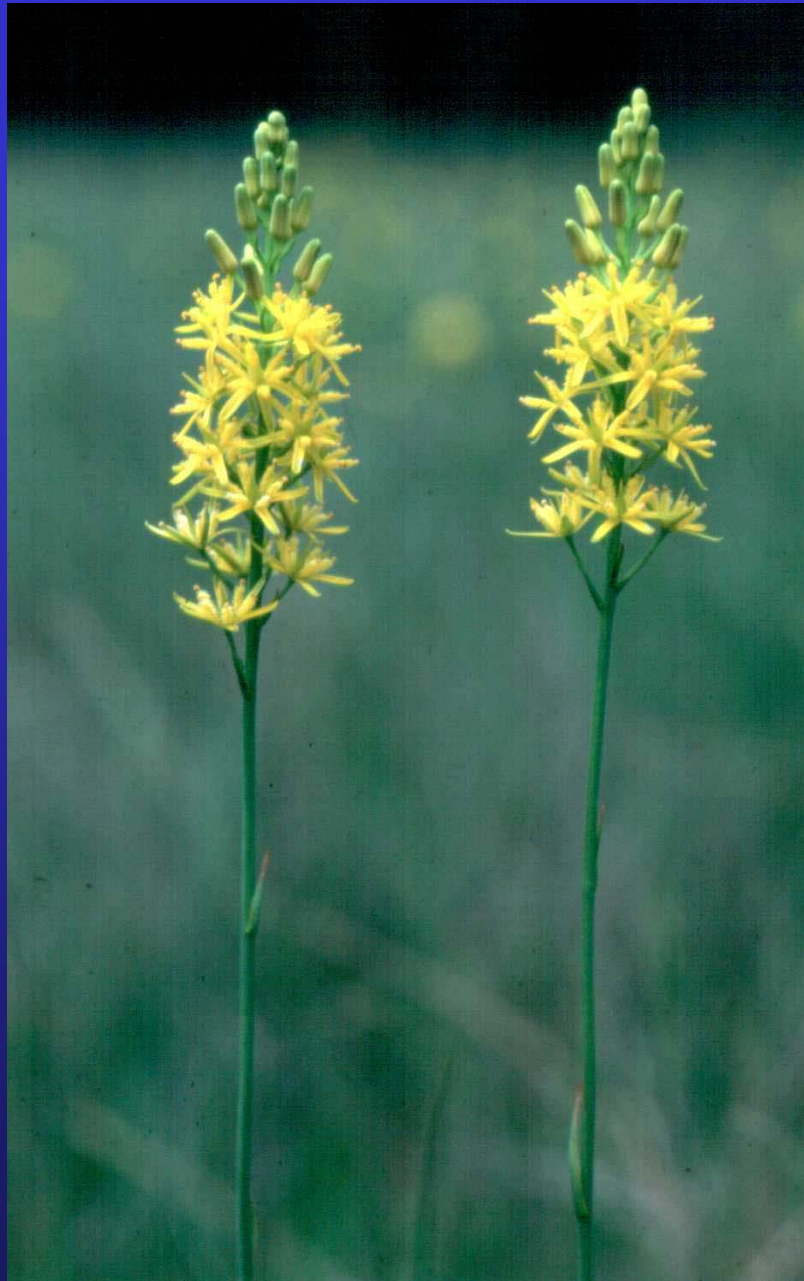


Swamp Pink
(*Helonias bullata*)

Federally Threatened
State Endangered



Photograph by David Snyder



Bog asphodel

(*Narthecium americanum*)

Endemic to New Jersey

Restricted to a globally rare
endemic ecological
community in the Pine
Barrens





Hammond's yellow spring beauty

(*Claytonia virginica* var.
hammondiae)

Endemic to New Jersey

Known from a single
location worldwide



American chaffseed
(Schwalbea americana)

Known from a single location
in New Jersey



Photograph by Mark H. Burlas

Sea-beach Amaranth

(Amaranthus Pumilus)

Reappeared in NJ in 2000 after an
absence of 87 years

Spreading Globe Flower

Trollius laxus ssp. *laxus*

State Endangered

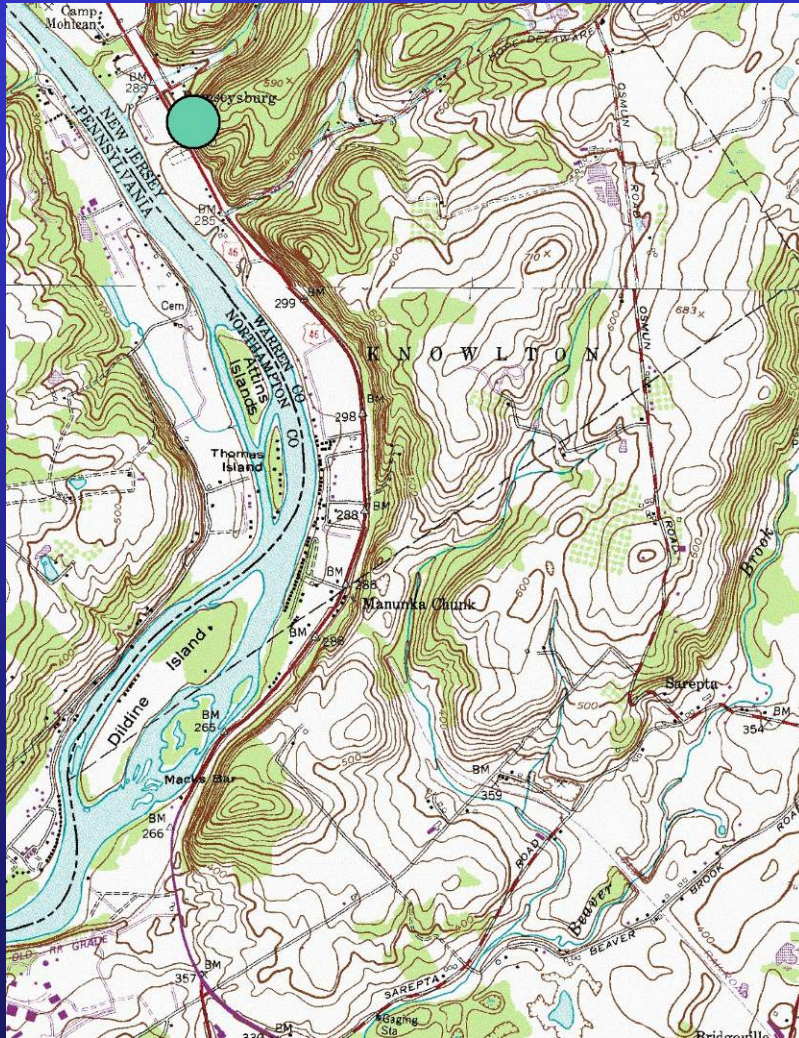


Statutory Purpose

- “to identify the most critically imperiled natural areas in the State and provide detailed up-to-date information on rare species and natural communities to planners, developers, and conservation agencies for use in resource management, environmental impact assessment, and both public and private land protection efforts.”

Manunka Chunk Bluffs

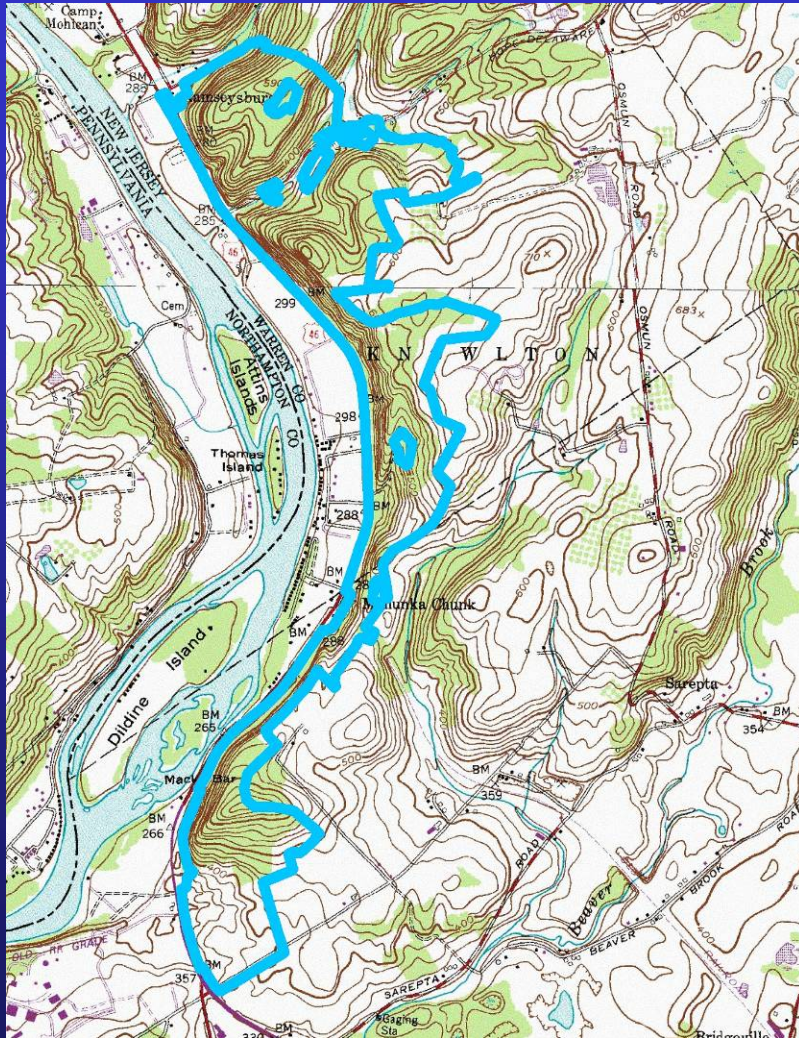
Warren County



- Hairy Lipfern
Cheilanthes lanosa
G5, S2
- Historic occurrence from limestone cliffs, Manunka Chunk for -
Rock Sandwort
Arenaria stricta
State Endangered
G5T5, SH

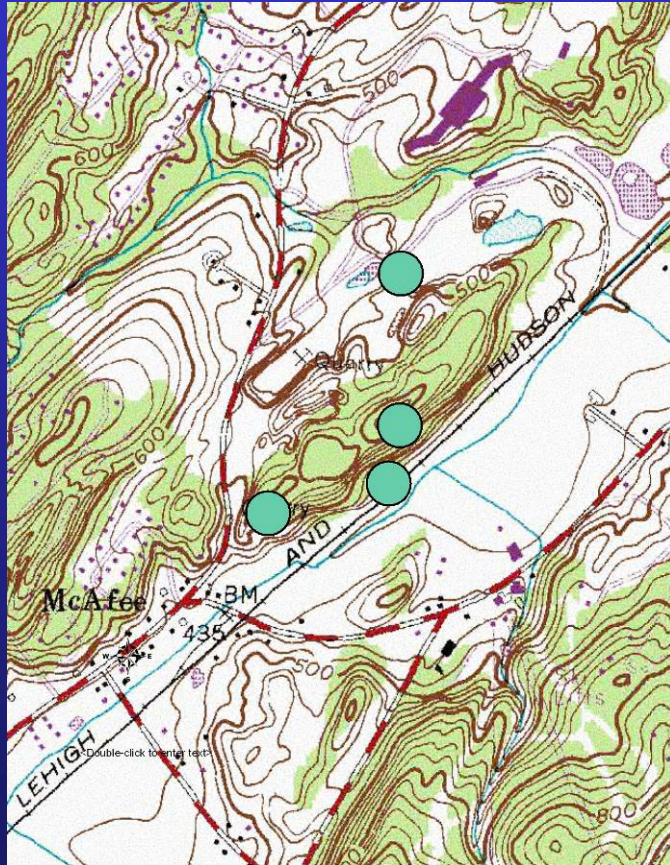
Manunka Chunk Bluffs

Warren County



McAfee Quarry

Vernon Twp., Sussex County



- Prairie Goldenrod
Solidago rigida
State Endangered
G5T5, S1
- Cornel-leaf Aster
Doellingeria infirma
G5, S2
- Ebony Sedge
Carex eburnea
G5, S2

McAfee Quarry

Vernon Twp., Sussex County

