



Map No.	NJPDES Permit Number	Facility Name	Discharge Type
1.	NJ009732	Grasso Foods	Industrial Discharge (GW)
2.	NJ0157091	WaWa Convenience Store	Onsite Discharge (GW)
3.	NJ0022021	Swedesboro STP	Wastewater Treatment Plant Discharge (SW)
See Logan Map	NJ0027545	Logan Township MUA	Wastewater Treatment Plant Discharge (SW) See Logan Map

Notes:

Pursuant to N.J.A.C. 7:15, Riparian zones are: 300 feet from top of bank (or centerline of a flow stream where no bank is apparent) for waters designated as Category One and all upstream tributaries within the same HUC 14; 150 feet for waters designated Trout Production and all upstream waters, 150 feet for water designated Trout Maintenance and all upstream waters within one linear mile as measured along the length of the regulated water, 150 feet for any segments of water flowing through an area that contains documented habitat for a threatened or endangered species of plant or animal, which is directly dependent on the surface water body for survival, and all upstream waters (including tributaries) within one linear mile as measured along the length of the surface water body; 150 feet for waters that run through agricultural soils, and; 50 feet for all waters not designated as C1, but waters, or critical water dependent Threatened and/or Endangered Species Habitat, or associated with riparian soils.

Surface waters that are designated Category One are listed in the Surface Water Quality Standards at N.J.A.C. 7:9B. The Department's Surface Water Quality Standards - GIS data layer was utilized to determine these waters. The applicable 300 foot buffer has been applied to these waterways and removed from the proposed sewer service areas on the mapping. Lesser width buffers have not been graphically removed from the sewer service area but are not proposed for sewer service. Jurisdictional determinations by the Department will be utilized to determine the extent of the sewer service area on individual lots.

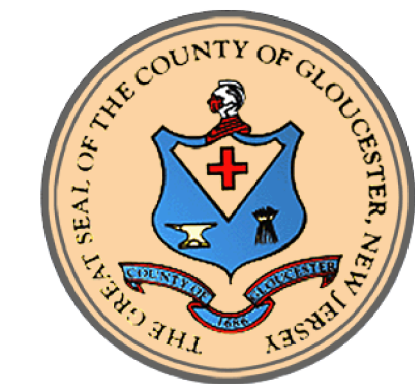
At existing, new or expanded industrial pretreatment facilities requiring Significant Indirect User (SIU) permits and/or Treatment Works Approvals, and which are associated within the specified sewer service area, are deemed to be consistent.

Pre-existing grant conditions and requirements (from Federal and State grants or loans for sewerage facilities) which provide for restriction of sewer service to environmentally sensitive areas, are unaffected by adoption of this document and compliance is required.

Individual subsurface sewage disposal systems (ISSDS) for individual residences can only be constructed in depicted sewer service areas if legally enforceable guarantees are provided, before such construction, that use of such systems will be discontinued when the depicted sewer service becomes available. The applicant to ISSDS that require certification from the Department under the Realty Improvement Sewerage and Facilities Act (NJSA 58:11-23) or individual Treatment Works Approval or New Jersey Pollutant Discharge Elimination System Permits (under N.J.A.C. 7:14A), it also applies to ISSDS which require only local approvals.

Development in areas mapped as wetlands, flood prone areas, suitable habitat for endangered and threatened species as identified on the Department's Landcover Maps of Habitat for Endangered, Threatened and Other Priority Wildlife as Ranks 3, 4 and 5, Natural Heritage Priority Sites, riparian zones, steep slopes, or designated river areas may be subject to special regulation under Federal or State statutes or rules, and interested persons should check with the Department for the latest information. Any depiction of environmental features shall be for general information purposes only, and shall not be construed to define the legal geographic jurisdiction of such statutes or rules.

Areas located within the watershed of a Freshwater One (FW1) stream, as classified in the Surface Water Quality Standards, and/or that have Class 1-A groundwater (Groundwater of Special Ecological Significance), as classified in the Ground Water Quality Standards, are identified as "Non-degradation water areas based on the Surface Water Quality Standards at N.J.A.C. 7:9B, and/or the Ground Water Quality Standards at N.J.A.C. 7:9-6." Non-degradation water areas shall be maintained in their natural state (set aside for posterity) and are subject to restrictions including, but not limited to, the following: 1) DEP will not approve any pollutant discharge to groundwater or approve any human activity which results in a degradation of natural quality except for the upgrade or continued operation of existing facilities serving existing development. For additional information please see the Surface Water Quality Standards at N.J.A.C. 7:9B and/or the Ground Water Quality Standards at N.J.A.C. 7:9-6.



Gloucester County Non-Consolidated District Wastewater Management Plan

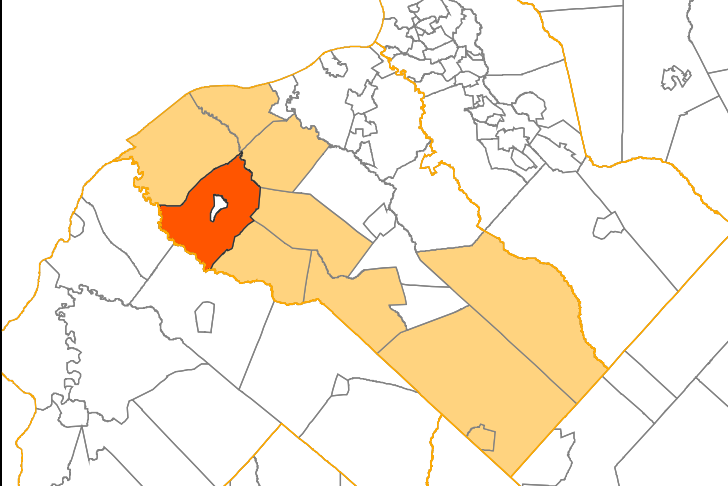
Map 3

WOOLWICH TOWNSHIP FUTURE WASTEWATER SERVICE AREAS

Legend

- Non-Consolidated District Planning Area in Woolwich Township
- County Boundary
- Municipal Boundary
- Parcel Boundary
- Watershed Boundary
- Waterbody
- Area Currently Served by Sanitary Sewer Service-by Logan Township MUA
- Area Currently Served by Sanitary Sewer Service-by Swedesboro STP
- NJPDES Surface Water Discharges
- ▲ NJPDES Ground Water Discharges
- Future Sewer Service Area**
- Woolwich Township Sewer Service Area (Surface Water Discharges -LTMUA)
- Woolwich Township Sewer Service Area (Surface Water Discharges -Swedesboro STP)
- Groundwater Discharge Individual Permit
- Industrial Discharge Permit
- Service Area for Wastewater Facilities with Planning Flows of Less than 2,000 GPD Which Discharges to Groundwater
- NJ# NJPDES Surface/Groundwater Discharge ID (See Table)
- Watershed Watershed Label

This map was developed using New Jersey Department of Environmental Protection and Woolwich Township Geographic Information System digital data but this secondary product has not been verified by NJDEP and is not state-authorized.

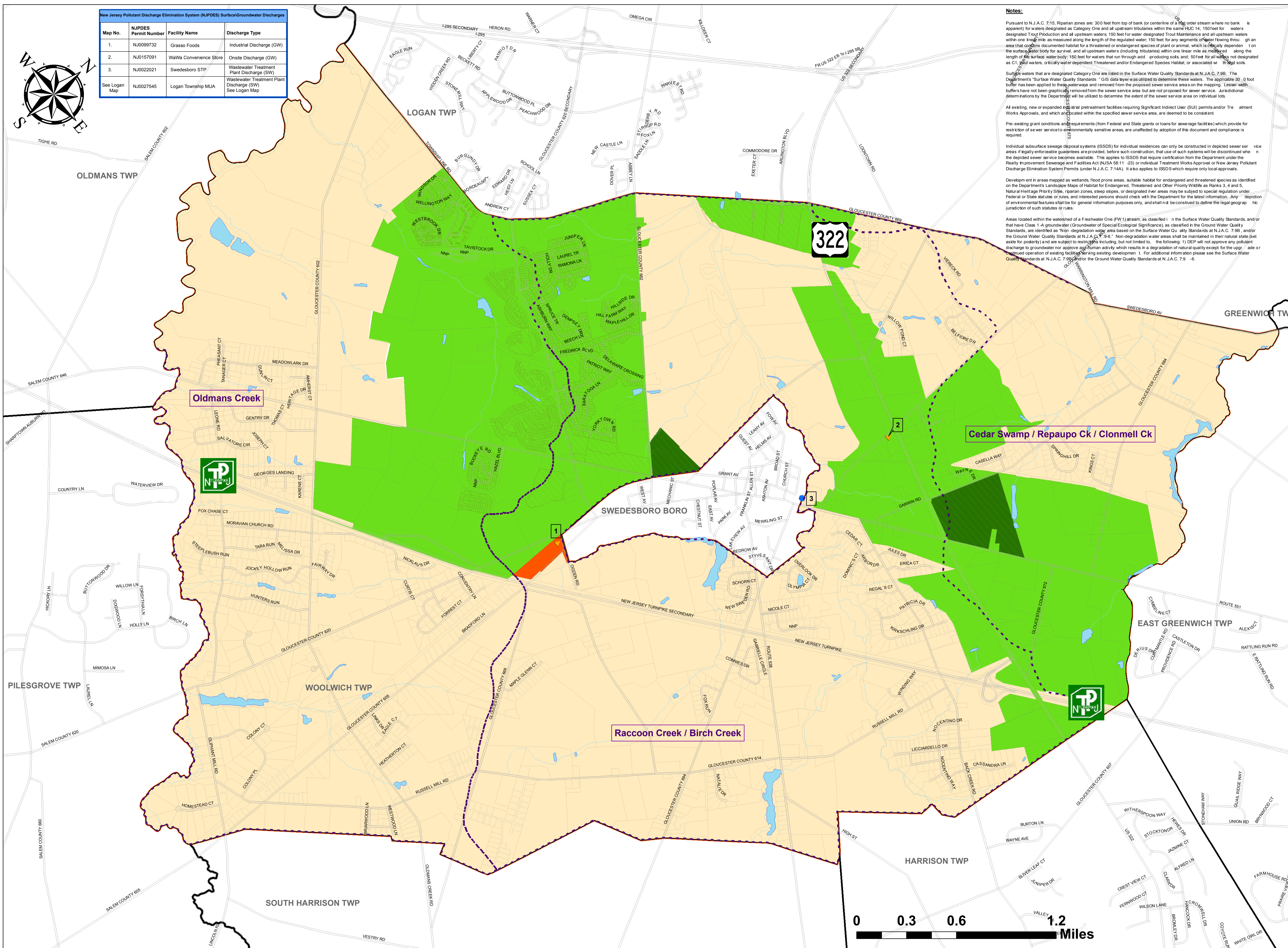


No.	Date	Description
1.	3/20/2012	Submission to NJDEP - WQMP Amendments



27 Bleeker Street
Millburn, NJ 07041
973-379-3400

P:1250053\Revised Mapping March 2012



322

Oldmans Creek

Cedar Swamp / Repaupo Ck / Clonmell Ck

Raccoon Creek / Birch Creek

0 0.3 0.6 1.2 Miles