

NOTES:

WATERMANS, BOOSTER STATIONS & TANK. TAKEN FROM FILES SUPPLIED BY SALEM CITY AND THE BOROUGH OF WOODSTOWN.
 BASEMAP INFORMATION INCLUDING PARCELS, ROADS AND MUNICIPAL BOUNDARY TAKEN FROM THE SALEM COUNTY DATABASE FILE.
 THIS (MAP/PUBLICATION/REPORT) WAS DEVELOPED USING NEW JERSEY DEPARTMENT OF ENVIRONMENTAL PROTECTION GEOGRAPHIC INFORMATION SYSTEM DIGITAL DATA, BUT THIS SECONDARY PRODUCT HAS NOT BEEN VERIFIED BY NJDEP AND IS NOT STATE-AUTHORIZED.

NO.	DATE	REVISION	BY:

WASTEWATER MANAGEMENT PLAN
PLANNING AREA & WATER SUPPLY - MAP 1
TOWNSHIP OF QUINTON
 SALEM COUNTY
WASTEWATER MANAGEMENT PLAN
 SALEM COUNTY, NEW JERSEY

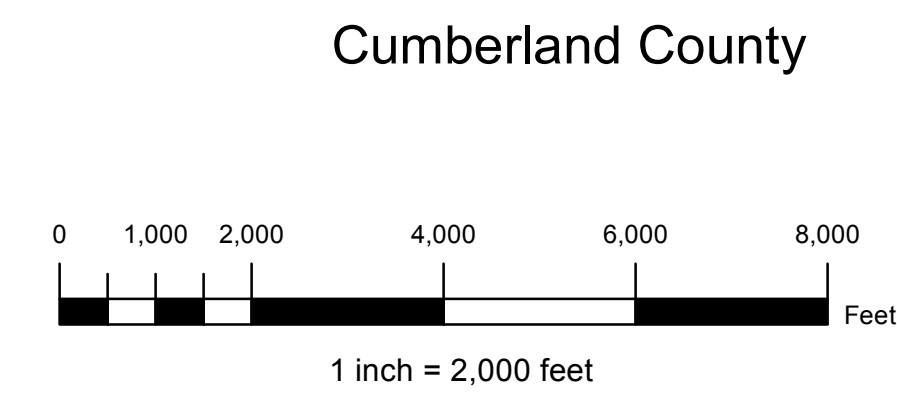


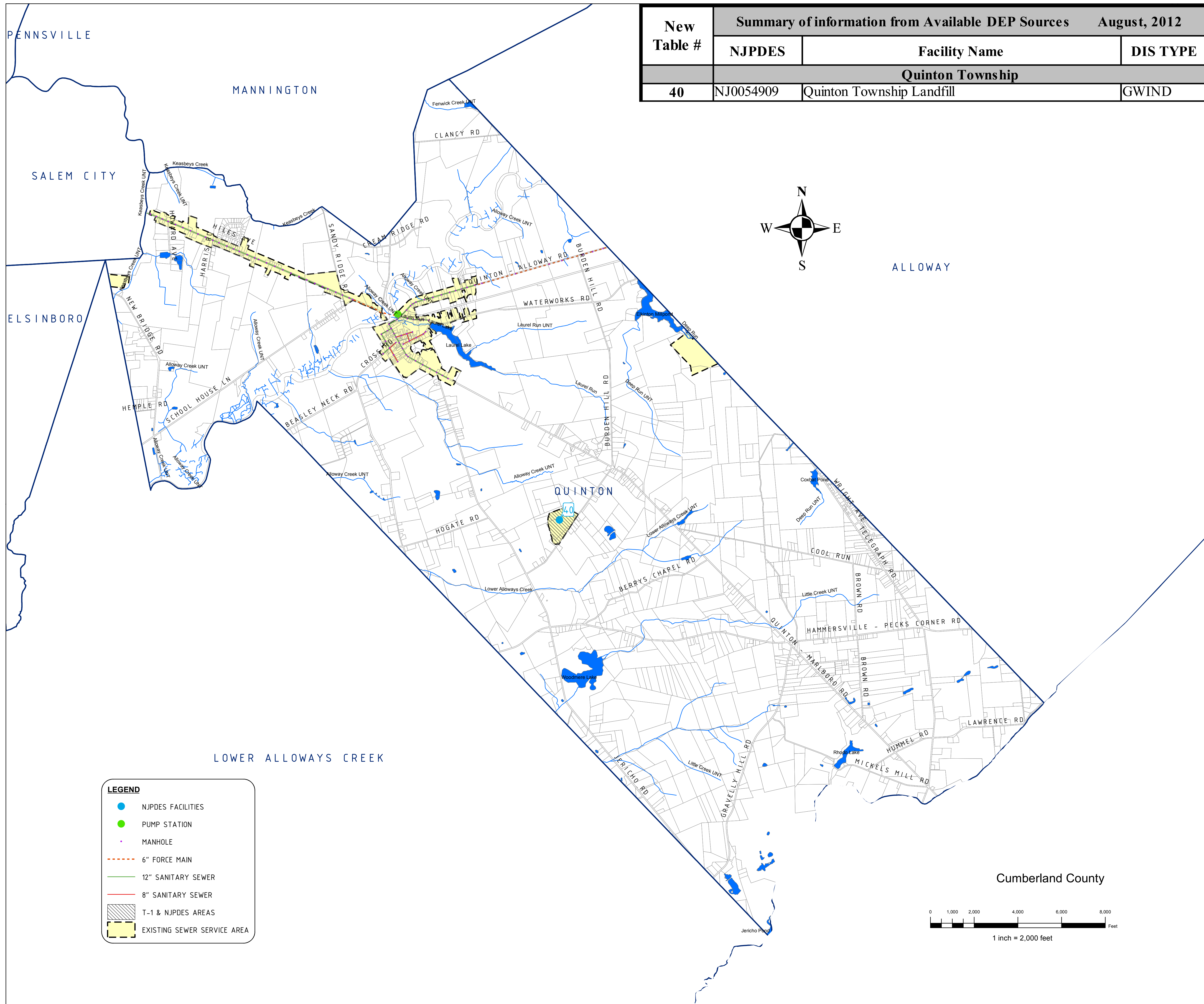
SICKELS & ASSOCIATES INC.
 SHERWOOD MEWS
 833 KINGS HIGHWAY
 WOODBURY, NEW JERSEY 08096-3110
 NJ CERTIFICATE OF AUTHORIZATION
 No. GA27994903 856-848-6800
 FAX 848-8520

DRAWN BY: DJP	DATE: 3-5-12	SHEET: 1 of 1
CHECKED BY: DSP	DWG: F-SALEM WMP	FILE: 5363

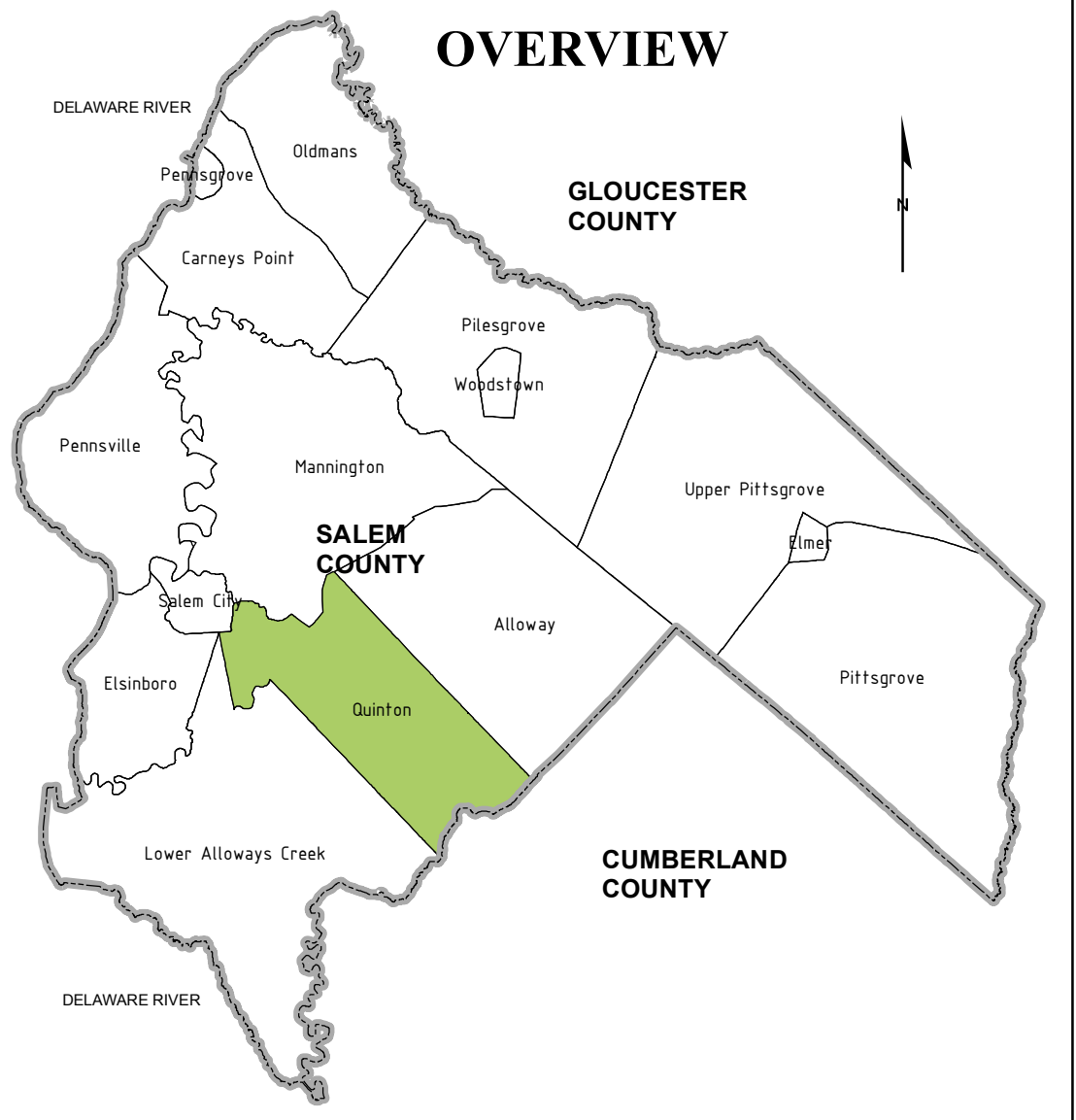
LEGEND

- INTAKE
- STREAM
- - - 20" RAW WATER
- 12" WATER MAIN
- SALEM WATER RETAIL AREA
- HUC-11
- LAKE





New Table #	Summary of information from Available DEP Sources August, 2012	
	NJPDES	Facility Name
40	NJ0054909	Quinton Township Landfill



NOTES:

"LOCATIONS OF FUTURE PUMP STATIONS, MAJOR INTERCEPTORS, AND TRUNK SEWERS ARE BEING PROVIDED FOR GENERAL INFORMATION ONLY AND WILL NOT SERVE AS THE BASIS FOR ANY FUTURE CONSISTENCY DETERMINATIONS OR PERMIT REVIEWS UNLESS THE PUMP STATION, MAJOR INTERCEPTOR OR TRUNK SEWER IS PART OF A STATE OR FEDERALLY FUNDED PROJECT."

"ALL EXISTING, NEW, OR EXPANDED INDUSTRIAL PRETREATMENT FACILITIES REQUIRING SIGNIFICANT INDIRECT USER (SIU) PERMITS AND/OR TREATMENT WORKS APPROVALS, AND WHICH ARE LOCATED WITHIN THE SPECIFIED SEWER SERVICE AREA, IS DEEMED TO BE CONSISTENT."

SANITARY SEWER INFORMATION, TAKEN FROM FILES SUPPLIED BY TOWNSHIP OF QUINTON.

BASEMAP INFORMATION INCLUDING PARCELS, ROADS AND MUNICIPAL BOUNDARY TAKEN FROM THE SALEM COUNTY DATABASE FILE.

"THIS (MAP/PUBLICATION/REPORT) WAS DEVELOPED USING NEW JERSEY DEPARTMENT OF ENVIRONMENTAL PROTECTION GEOGRAPHIC INFORMATION SYSTEM DIGITAL DATA, BUT THIS SECONDARY PRODUCT HAS NOT BEEN VERIFIED BY NJDEP AND IS NOT STATE-AUTHORIZED."

LEGEND

- NJPDES FACILITIES
- PUMP STATION
- MANHOLE
- - - 6" FORCE MAIN
- 12" SANITARY SEWER
- 8" SANITARY SEWER
- ▨ T-1 & NJPDES AREAS
- ▨ EXISTING SEWER SERVICE AREA

NO.	DATE	REVISION	BY:
1.	12-18-13	REV NJPDES-T1 AREAS & TABLE PER NJDEP COMMENTS	DJP

EXISTING FACILITIES AND SERVICE AREA - MAP 2

TOWNSHIP OF QUINTON
 SALEM COUNTY
 WASTEWATER MANAGEMENT PLAN
 SALEM COUNTY, NEW JERSEY

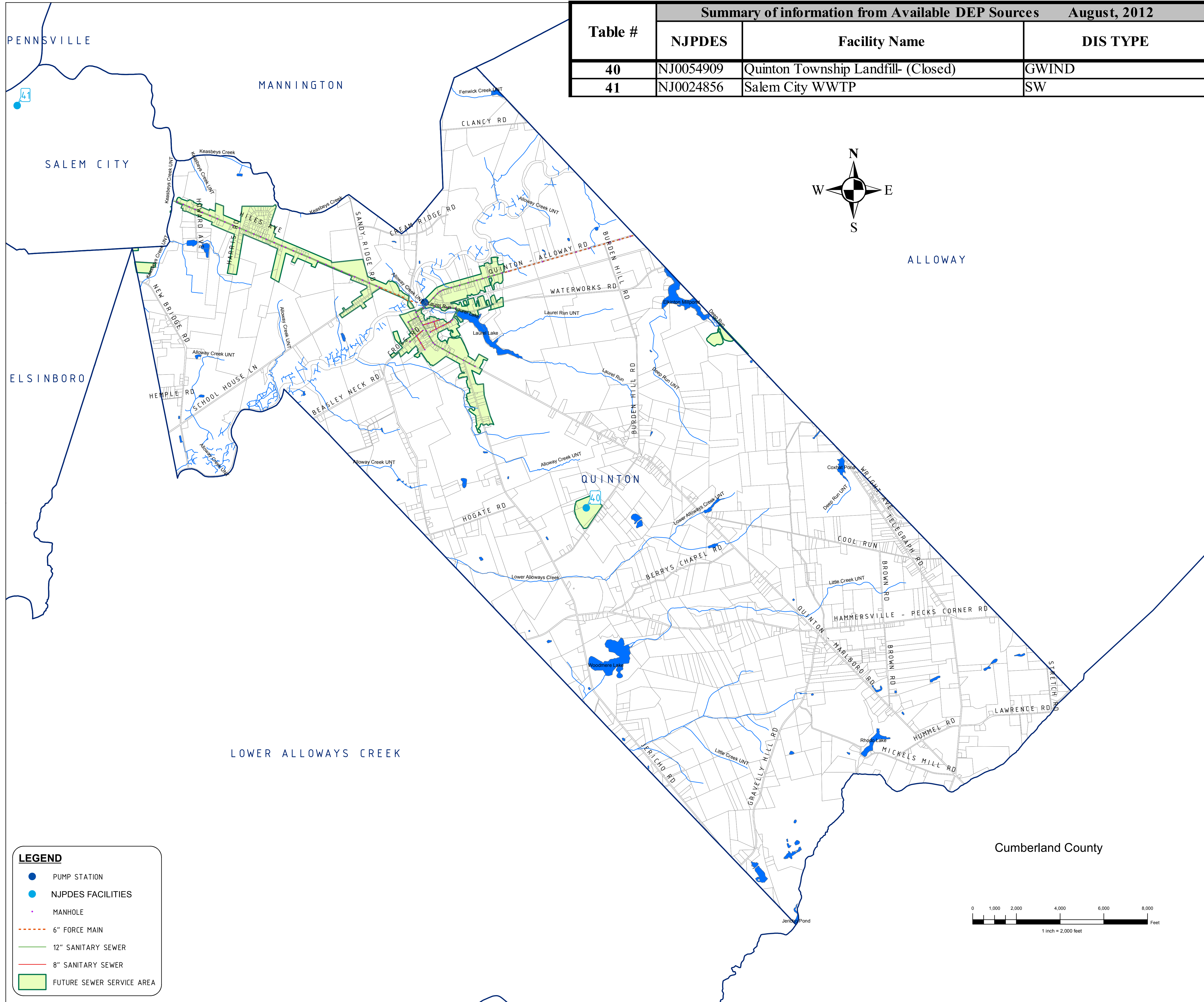
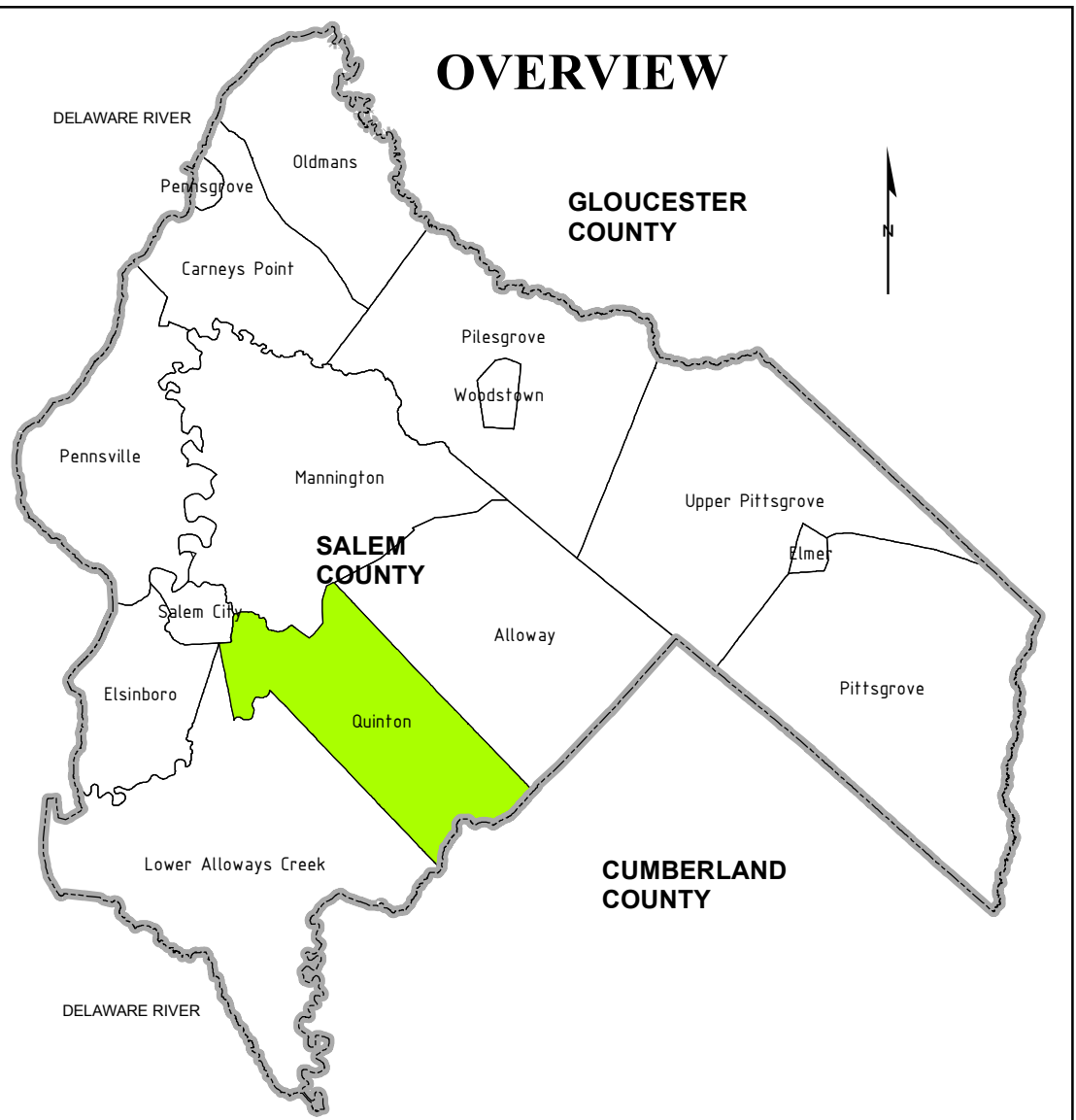
SALEM COUNTY DEPARTMENT OF PLANNING AND AGRICULTURE
 110 FIFTH STREET
 SALEM, NEW JERSEY

SICKELS & ASSOCIATES INC.

SHERWOOD MEWS
 833 KINGS HIGHWAY
 WOODBURY, NEW JERSEY 08096-3110
 NJ CERTIFICATE OF AUTHORIZATION
 No. GA27949600 856-848-6800
 FAX 848-8520

DRAWN BY: DJP DATE: 3-5-12 SHEET: 1 of 1
 CHECKED BY: DSP DWG: F-SALEM WMP FILE: 5363

Summary of information from Available DEP Sources August, 2012			
Table #	NJPDES	Facility Name	DIS TYPE
40	NJ0054909	Quinton Township Landfill- (Closed)	GWIND
41	NJ0024856	Salem City WWTP	SW



NOTES:

"PLEASE NOTE THAT WHERE THE VISUAL DEPICTION OF SSA DOES NOT EXPLICITLY INDICATE THE SPECIFIC SEWER SERVICE AREA ASSOCIATED WITH THE WASTEWATER TREATMENT FACILITIES, THE STATEWIDE DIGITIZED SEWER SERVICE AREA MAPPING DOES. THE PUBLICALLY AVAILABLE SEWER SERVICE AREA MAPPING IS AVAILABLE FOR VIEWING ON NJ GEO-WEB AT [HTTP://WWW.NJ.GOV/DEP/GIS/GEOWEB/SPASH.HTM](http://www.nj.gov/dep/gis/geoweb/splash.htm). IT IS ALSO AVAILABLE FOR DOWNLOAD TO USE IN ARCGIS AT [HTTP://WWW.NJ.GOV/DEP/GIS/IDENTSHP.HTML](http://www.nj.gov/dep/gis/identshp.html)."

"THE SEWER SERVICE AREA IDENTIFIED ON THIS MAP HAS BEEN REVIEWED BY THE MUNICIPALITY, COUNTY AND DEP. THIS AREA HAS BEEN DEFINED BASED ON ENVIRONMENTAL CONSTRAINTS 'LANDSCAPE PROJECT AREA GIS LAYERS', AVAILABLE FROM THE DEPARTMENT TO CLARIFY AREAS OF POTENTIAL SEWER SERVICE. THE TREATMENT FACILITY FOR THE SEWER SERVICE AREA DOES NOT GUARANTEE THAT SUFFICIENT WASTEWATER TREATMENT CAPACITY WILL BE AVAILABLE FOR THE COMPLETE BUILD OUT OF THE AREA."

"LOCATIONS OF FUTURE PUMP STATIONS, MAJOR INTERCEPTORS, AND TRUNK SEWERS ARE BEING PROVIDED FOR GENERAL INFORMATION ONLY AND WILL NOT SERVE AS THE BASIS FOR ANY FUTURE CONSISTENCY DETERMINATIONS OR PERMIT REVIEWS UNLESS THE PUMP STATION, MAJOR INTERCEPTOR OR TRUNK SEWER IS PART OF A STATE OR FEDERALLY FUNDED PROJECT."

"ALL EXISTING, NEW, OR EXPANDED INDUSTRIAL PRE-TREATMENT FACILITIES REQUIRING SIGNIFICANT INDIRECT USER (SIU) PERMITS AND/OR TREATMENT WORKS APPROVALS, AND WHICH ARE LOCATED WITHIN THE SPECIFIED SEWER SERVICE AREA, IS DEEMED TO BE CONSISTENT."

"PRE-EXISTING GRANT CONDITIONS AND REQUIREMENTS (FROM FEDERAL AND STATE GRANTS OR LOANS FOR SEWERAGE FACILITIES) WHICH PROVIDE FOR RESTRICTION OF SEWER SERVICE TO ENVIRONMENTALLY SENSITIVE AREAS, ARE UNWAIVED BY ADOPTION OF THIS WMP AND COMPLIANCE IS REQUIRED. PLEASE SEE MUNICIPAL WMP CHAPTERS FOR THE EXISTENCE OF ANY APPLICABLE ENVIRONMENTALLY SENSITIVE AREAS IN WHICH FEDERAL 201 GRANT LIMITATIONS PROHIBIT THE EXTENSION OF SEWER SERVICE"

"INDIVIDUAL SUBSURFACE SEWAGE DISPOSAL SYSTEMS (ISSDS) FOR INDIVIDUAL RESIDENCES CAN ONLY BE CONSTRUCTED IN DEPICTED SEWER SERVICE AREAS IF LEGALLY ENFORCEABLE GUARANTEES ARE PROVIDED, BEFORE SUCH CONSTRUCTION, THAT USE OF SUCH SYSTEMS WILL BE DISCONTINUED WHEN THE DEPICTED SEWER SERVICE BECOMES AVAILABLE. THIS APPLIES TO ISSDS THAT REQUIRE CERTIFICATION FROM THE DEPARTMENT UNDER THE REALTY IMPROVEMENT SEWERAGE AND FACILITIES ACT (N.J.S.A. 58:11-23) OR INDIVIDUAL TREATMENT WORKS APPROVAL OR NEW JERSEY POLLUTANT DISCHARGE ELIMINATION SYSTEM PERMITS (UNDER N.J.A.C. 7:14A). IT ALSO APPLIES TO ISSDS WHICH REQUIRE ONLY LOCAL APPROVALS."

"COMPLIANCE WITH THE CONNECTION REQUIREMENT HAS BEEN DEMONSTRATED THROUGH ADOPTION OF TOWNSHIP OF QUINTON ORDINANCE [INSERT ORDINANCE #] IN ADDITION TO THE TEXT FOUND IN THE WMP TEMPLATE DOCUMENT THE FOLLOWING IS NEEDED: "PROPOSED DEVELOPMENTS TYPING INTO EXISTING AND PROPOSED SEWER SERVICE AREAS WHICH REQUIRE COASTAL PERMITS MUST DEMONSTRATE COMPLIANCE WITH ALL APPLICABLE SECTIONS OF THE COASTAL ZONE MANAGEMENT RULES INCLUDING, BUT NOT LIMITED TO, WETLANDS (N.J.A.C. 7:7E-3.27), WETLANDS BUFFERS (N.J.A.C. 7:7E-3.38), SECONDARY IMPACTS (N.J.A.C. 7:7E-6.3), PUBLIC FACILITY USE POLICIES (N.J.A.C. 7:7E-7.6), WATER QUALITY (N.J.A.C. 7:7E-8.4), GROUND WATER USE (N.J.A.C. 7:7E-8.6) AND THE POLICIES UNDER GENERAL LAND AREAS RULES, SUBCHAPTERS 5, 5A AND 5B"

"SANITARY SEWER INFORMATION, TAKEN FROM FILES SUPPLIED BY TOWNSHIP OF QUINTON, BASEMAP INFORMATION INCLUDING PARCELS, ROADS AND MUNICIPAL BOUNDARY TAKEN FROM THE SALEM COUNTY DATABASE FILE."

"THIS MAP/PUBLICATION/REPORT WAS DEVELOPED USING NEW JERSEY DEPARTMENT OF ENVIRONMENTAL PROTECTION GEOGRAPHIC INFORMATION SYSTEM DIGITAL DATA, BUT THIS SECONDARY PRODUCT HAS NOT BEEN VERIFIED BY NJDEP AND IS NOT STATE-AUTHORIZED."

NO.	DATE	REVISION	BY:
3.	9-2-15	ADDED NOTE PER NJDEP COMMENTS	DJP
2.	7-15-14	REV PER NJDEP COMMENTS	DJP
1.	12-18-13	REV NJPDES-T1 AREAS & TABLE PER NJDEP COMMENTS	DJP

REVISIONS

FUTURE SEWER SERVICE AREA - MAP 3

TOWNSHIP OF QUINTON
SALEM COUNTY
WASTEWATER MANAGEMENT PLAN
SALEM COUNTY, NEW JERSEY



SALEM COUNTY DEPARTMENT OF PLANNING AND AGRICULTURE

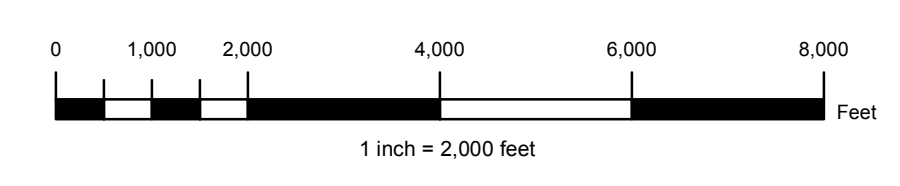
110 FIFTH STREET
SALEM, NEW JERSEY

SHERWOOD MEWS
833 KINGS HIGHWAY
WOODBURY, NEW JERSEY 08096-3110
NJ CERTIFICATE OF AUTHORIZATION
No. GA2794960

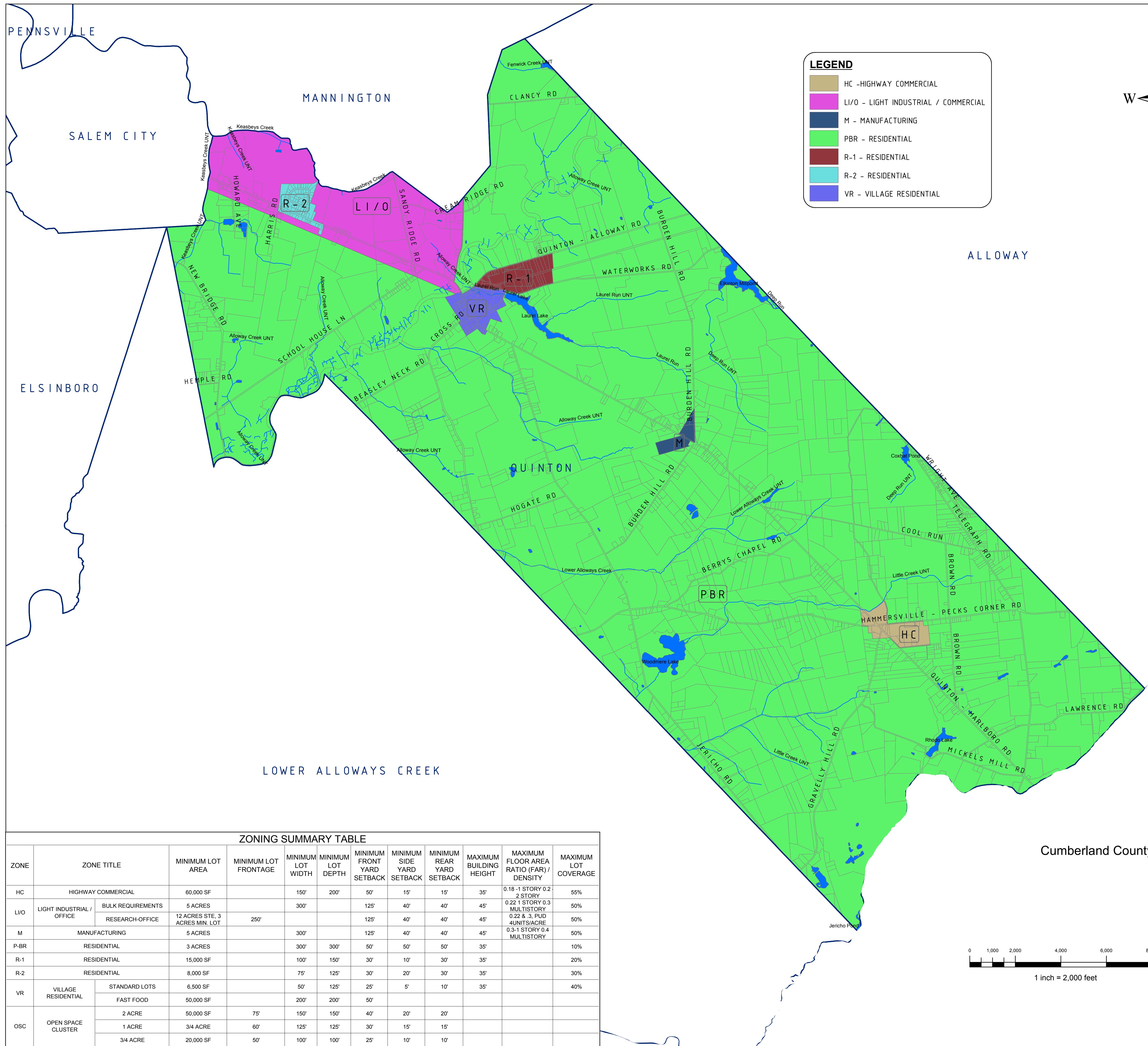
856-848-6800
FAX 848-8520

LEGEND

- PUMP STATION
- NJPDES FACILITIES
- MANHOLE
- 6" FORCE MAIN
- 12" SANITARY SEWER
- 8" SANITARY SEWER
- FUTURE SEWER SERVICE AREA

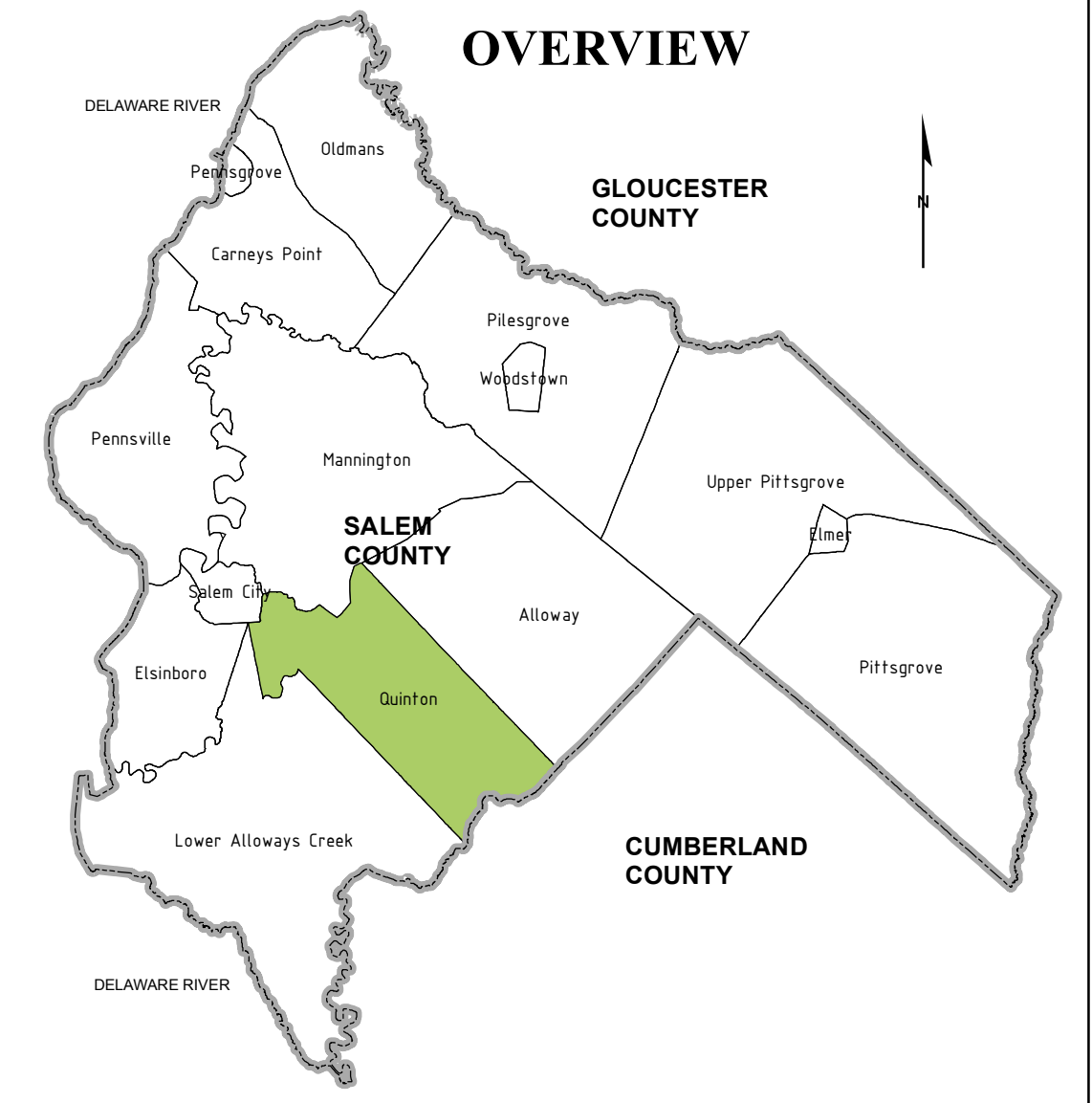
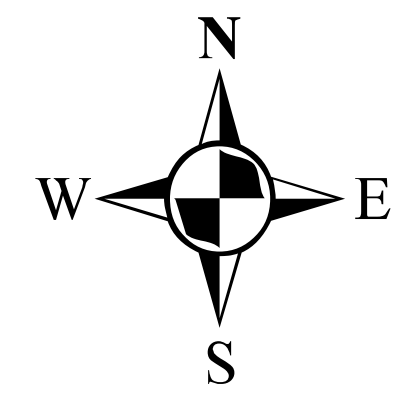


DRAWN BY: DJP	DATE: 3-5-12	SHEET: 1 of 1
CHECKED BY: DSP	DWG: F-SALEM WMP	FILE: 5363



LEGEND

- HC - HIGHWAY COMMERCIAL
- LI/O - LIGHT INDUSTRIAL / COMMERCIAL
- M - MANUFACTURING
- PBR - RESIDENTIAL
- R-1 - RESIDENTIAL
- R-2 - RESIDENTIAL
- VR - VILLAGE RESIDENTIAL



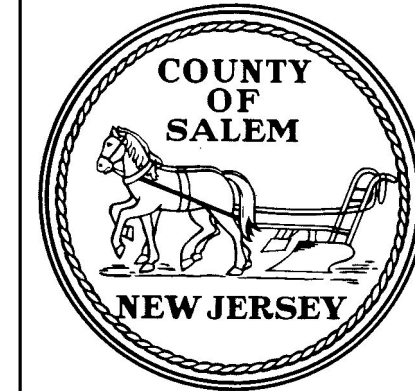
NOTES:

ZONING MAP TAKEN FROM SALEM COUNTY DATABASE FILE DATED 12-8-10. ZONING MAP DATED 11-1995. ORDINANCE INFORMATION TAKEN FROM THE QUINTON ORDINANCE DATED 5-08.
 BASEMAP INFORMATION INCLUDING PARCELS, ROADS AND MUNICIPAL BOUNDARY TAKEN FROM THE SALEM COUNTY DATABASE FILE.
 THIS (MAP/PUBLICATION/REPORT) WAS DEVELOPED USING NEW JERSEY DEPARTMENT OF ENVIRONMENTAL PROTECTION GEOGRAPHIC INFORMATION SYSTEM DIGITAL DATA, BUT THIS SECONDARY PRODUCT HAS NOT BEEN VERIFIED BY NJDEP AND IS NOT STATE-AUTHORIZED.

NO.	DATE	REVISION	BY:

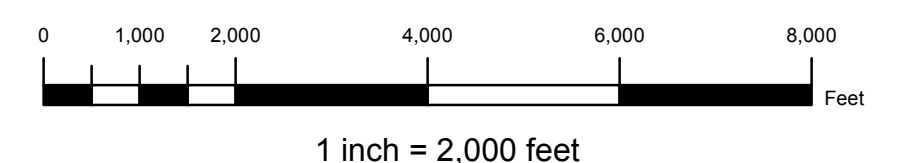
ZONING - MAP 4

TOWNSHIP OF QUINTON
 SALEM COUNTY
 WASTEWATER MANAGEMENT PLAN
 SALEM COUNTY, NEW JERSEY



SALEM COUNTY DEPARTMENT OF PLANNING AND AGRICULTURE
 110 FIFTH STREET
 SALEM, NEW JERSEY

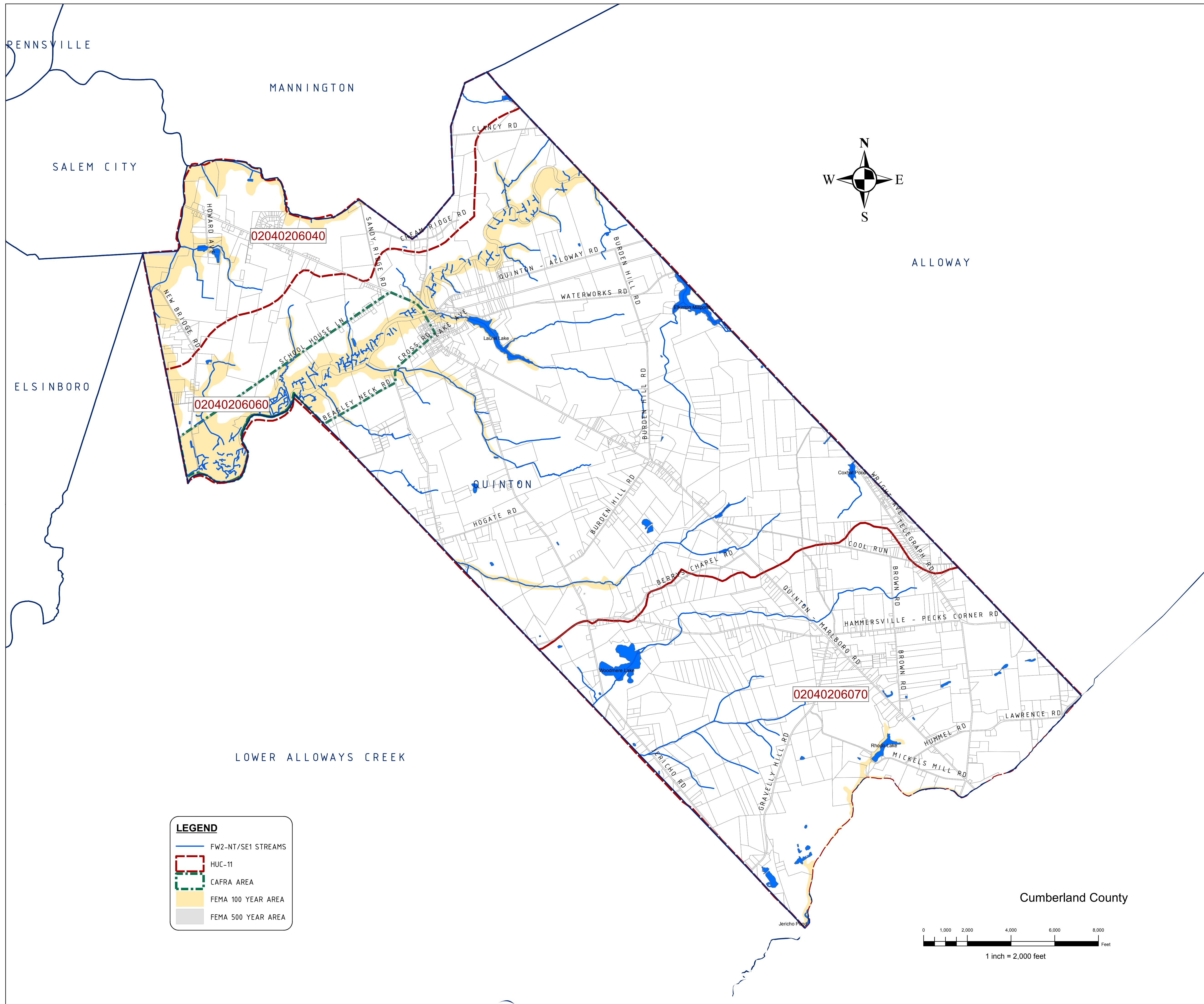
SICKELS & ASSOCIATES, INC.
 SHERWOOD MEWS
 833 KINGS HIGHWAY
 WOODBURY, NEW JERSEY 08096-3110
 NJ CERTIFICATE OF AUTHORIZATION
 No. GA27949601 856-848-6800
 FAX 848-8520



ZONING SUMMARY TABLE

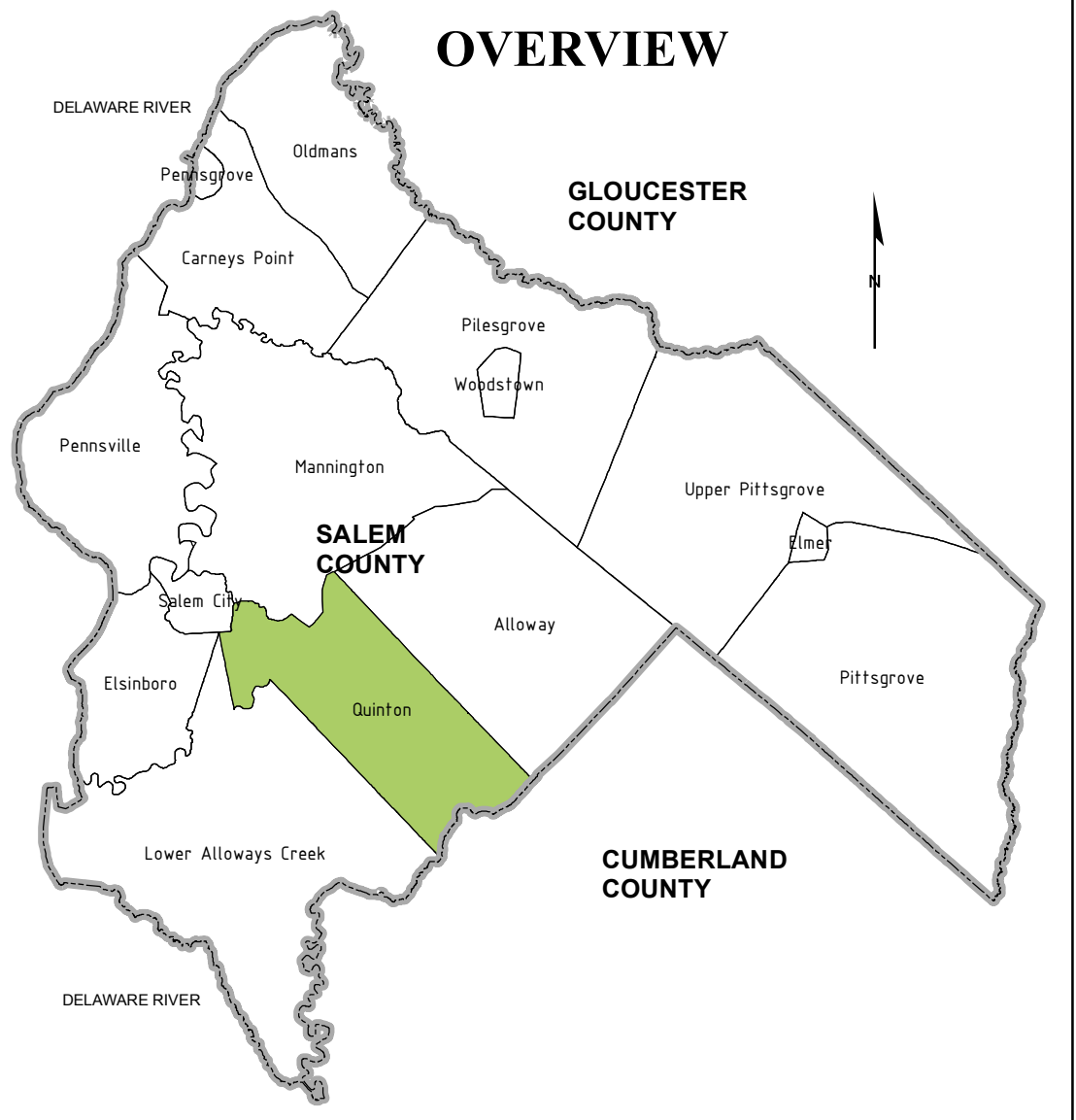
ZONE	ZONE TITLE	MINIMUM LOT AREA	MINIMUM LOT FRONTAGE	MINIMUM LOT WIDTH	MINIMUM LOT DEPTH	MINIMUM FRONT YARD SETBACK	MINIMUM SIDE YARD SETBACK	MINIMUM REAR YARD SETBACK	MAXIMUM BUILDING HEIGHT	MAXIMUM FLOOR AREA RATIO (FAR) / DENSITY	MAXIMUM LOT COVERAGE
HC	HIGHWAY COMMERCIAL	60,000 SF		150'	200'	50'	15'	15'	35'	0.18 - 1 STORY 0.2 2 STORY	55%
LI/O	LIGHT INDUSTRIAL / OFFICE	BULK REQUIREMENTS	5 ACRES		300'	125'	40'	40'	45'	0.22 1 STORY 0.3 MULTISTORY	50%
		RESEARCH-OFFICE	12 ACRES STE, 3 ACRES MIN. LOT	250'		125'	40'	40'	45'	0.22 & 3, PUD 4 UNITS/ACRE	50%
M	MANUFACTURING	5 ACRES		300'		125'	40'	40'	45'	0.3-1 STORY 0.4 MULTISTORY	50%
P-BR	RESIDENTIAL	3 ACRES		300'	300'	50'	50'	50'	35'		10%
R-1	RESIDENTIAL	15,000 SF		100'	150'	30'	10'	30'	35'		20%
R-2	RESIDENTIAL	8,000 SF		75'	125'	30'	20'	30'	35'		30%
VR	VILLAGE RESIDENTIAL	STANDARD LOTS	6,500 SF		50'	125'	25'	5'	10'	35'	40%
		FAST FOOD	50,000 SF		200'	200'	50'				
OSC	OPEN SPACE CLUSTER	2 ACRE	50,000 SF	75'	150'	150'	40'	20'	20'		
		1 ACRE	34 ACRES	60'	125'	125'	30'	15'	15'		
		34 ACRE	20,000 SF	50'	100'	100'	25'	10'	10'		

Cumberland County



LEGEND

- FW2-NT/SE1 STREAMS
- HUC-11
- CAFRA AREA
- FEMA 100 YEAR AREA
- FEMA 500 YEAR AREA



NOTES:

"DEVELOPMENT IN AREAS MAPPED AS WETLANDS, FLOOD PRONE AREAS, SUITABLE HABITAT FOR ENDANGERED AND THREATENED SPECIES AS IDENTIFIED ON THE DEPARTMENT'S LANDSCAPE MAPS OF HABITAT FOR ENDANGERED, THREATENED AND OTHER PRIORITY WILDLIFE AS RANK 3.4, AND 5, NATURAL HERITAGE PRIORITY SITES, RIPARIAN ZONES, STEEP SLOPES, OR DESIGNATED RIVER AREAS MAY BE SUBJECT TO SPECIAL REGULATION UNDER FEDERAL OR STATE STATUTES OR RULES, AND THAT INTERESTED PERSONS SHOULD CHECK WITH THE DEPARTMENT FOR THE LATEST INFORMATION. DEPICTION OF ENVIRONMENTAL FEATURES SHALL BE FOR GENERAL INFORMATION PURPOSES ONLY, AND SHALL NOT BE CONSTRUED TO DEFINE THE LEGAL GEOGRAPHIC JURISDICTION OF SUCH STATUTES OR RULES"

BASEMAP INFORMATION INCLUDING PARCELS, ROADS AND MUNICIPAL BOUNDARY TAKEN FROM THE SALEM COUNTY DATABASE FILE.

"THIS (MAP/PUBLICATION/REPORT) WAS DEVELOPED USING NEW JERSEY DEPARTMENT OF ENVIRONMENTAL PROTECTION GEOGRAPHIC INFORMATION SYSTEM DIGITAL DATA, BUT THIS SECONDARY PRODUCT HAS NOT BEEN VERIFIED BY NJDEP AND IS NOT STATE-AUTHORIZED."

NO.	DATE	REVISION	BY:

ENVIRONMENTAL FEATURES - MAP 5A CATEGORY ONE STREAMS, CAFRA, HUC 11, FEMA AREAS

TOWNSHIP OF QUINTON

SALEM COUNTY

WASTEWATER MANAGEMENT PLAN

SALEM COUNTY, NEW JERSEY

SALEM COUNTY DEPARTMENT OF PLANNING AND AGRICULTURE

110 FIFTH STREET
SALEM, NEW JERSEY

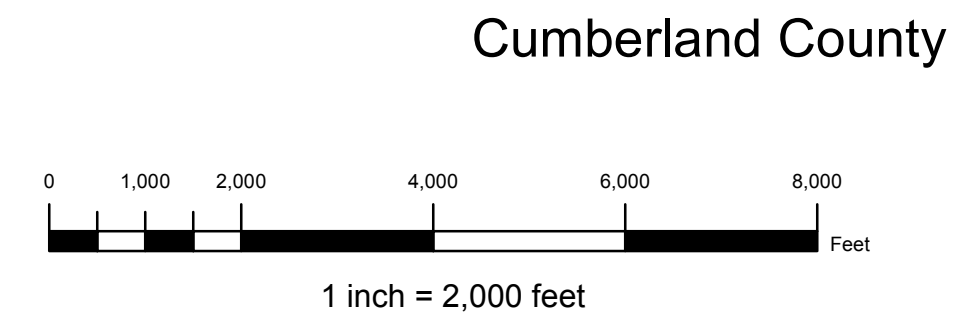
SICKELS & ASSOCIATES, INC.

SHERWOOD MEWS
833 KINGS HIGHWAY
WOODBURY, NEW JERSEY 08096-3110

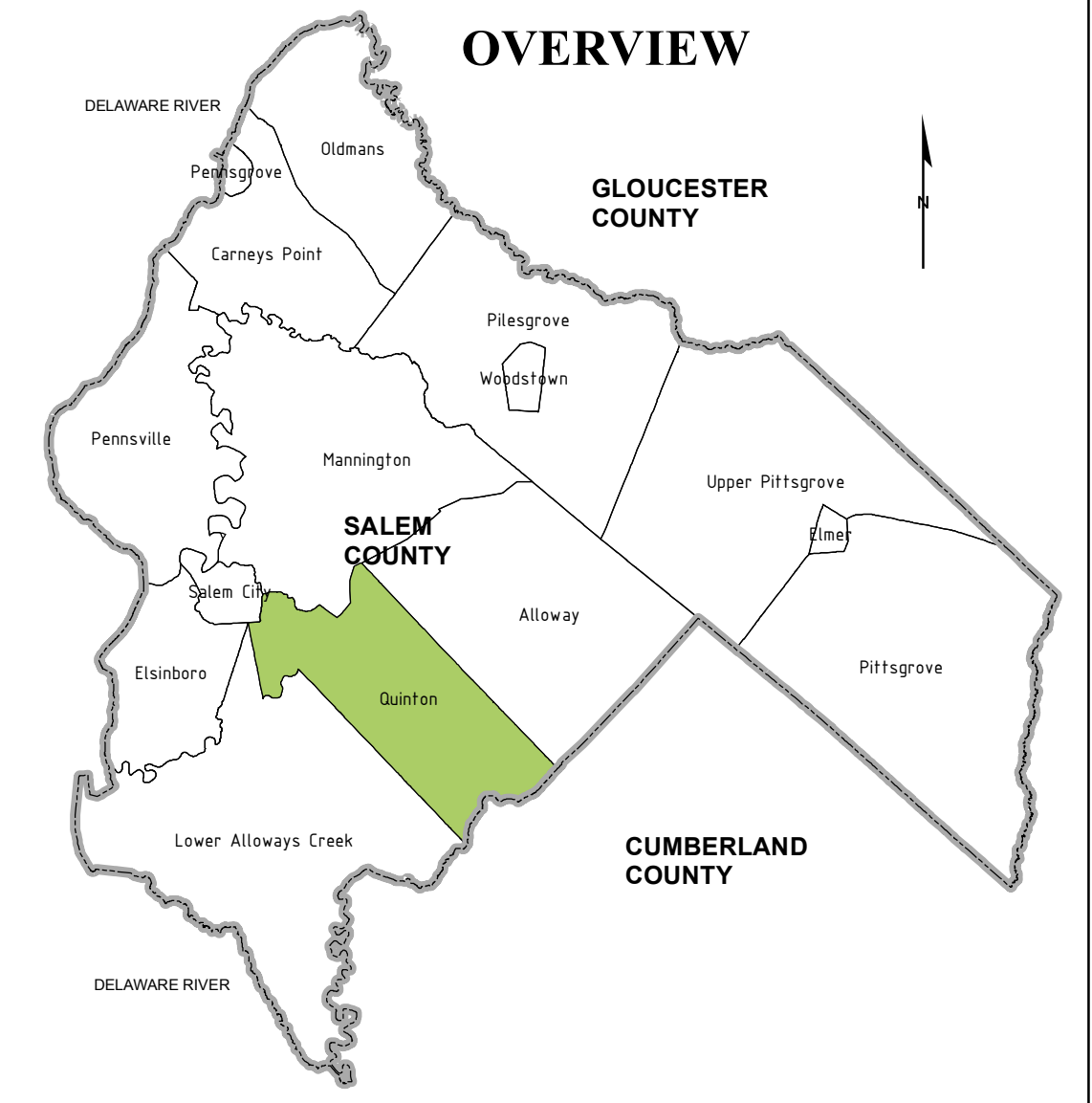
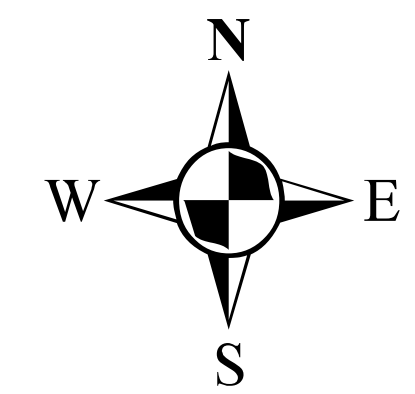
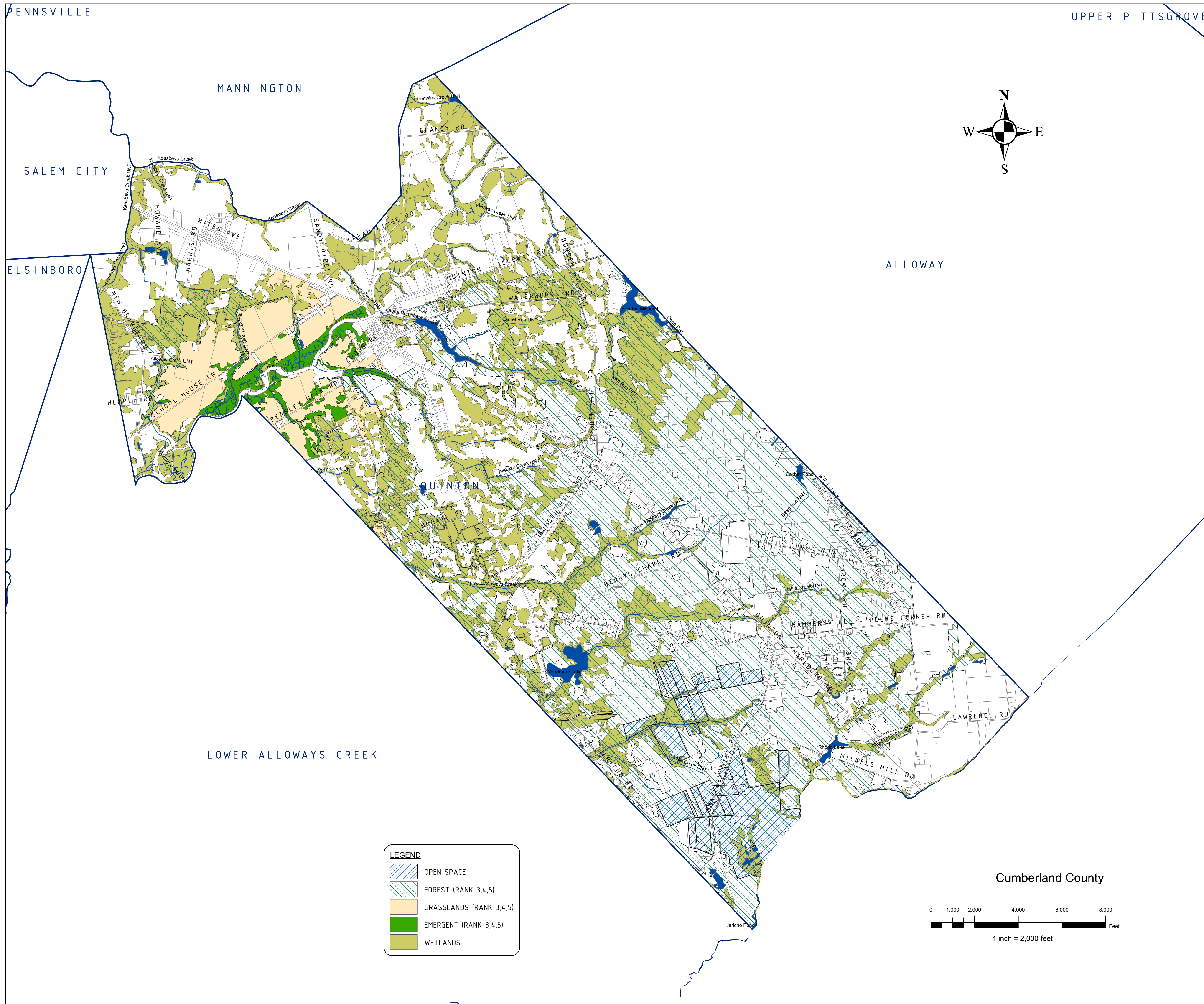
N.J. CERTIFICATE OF AUTHORIZATION
No. GA27994900

856-848-6800
FAX 848-8520

DRAWN BY: DJP	DATE: 3-5-12	SHEET: 1 of 1
CHECKED BY: DSP	DWG: F-SALEM WMP	FILE: 5363



Cumberland County



NOTES:

"DEVELOPMENT IN AREAS MAPPED AS WETLANDS, FLOOD PRONE AREAS, SUITABLE HABITAT FOR ENDANGERED AND THREATENED SPECIES AS IDENTIFIED ON THE DEPARTMENT'S LANDSCAPE MAPS OF HABITAT FOR ENDANGERED, THREATENED AND OTHER PRIORITY WILDLIFE AS RANK 3,4 AND 5, NATURAL HERITAGE PRIORITY SITES, RIPARIAN ZONES, STEEP SLOPES, OR DESIGNATED RIVER AREAS MAY BE SUBJECT TO SPECIAL REGULATION UNDER FEDERAL OR STATE STATUTES OR RULES, AND THAT INTERESTED PERSONS SHOULD CHECK WITH THE DEPARTMENT FOR THE LATEST INFORMATION. DEPICTION OF ENVIRONMENTAL FEATURES SHALL BE FOR GENERAL INFORMATION PURPOSES ONLY, AND SHALL NOT BE CONSTRUED TO DEFINE THE LEGAL GEOGRAPHIC JURISDICTION OF SUCH STATUTES OR RULES"

BASEMAP INFORMATION INCLUDING PARCELS, ROADS AND MUNICIPAL BOUNDARY TAKEN FROM THE SALEM COUNTY DATABASE FILE.

"THIS (MAP/PUBLICATION/REPORT) WAS DEVELOPED USING NEW JERSEY DEPARTMENT OF ENVIRONMENTAL PROTECTION GEOGRAPHIC INFORMATION SYSTEM DIGITAL DATA, BUT THIS SECONDARY PRODUCT HAS NOT BEEN VERIFIED BY NJDEP AND IS NOT STATE-AUTHORIZED."

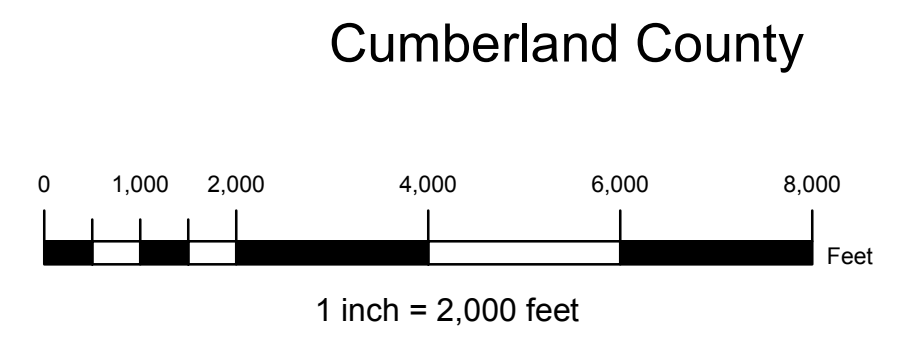
NO.	DATE	REVISION	BY:

**ENVIRONMENTAL FEATURES - MAP 5B,
WETLANDS, OPEN SPACE, FOREST,
GRASSLANDS, EMERGENT AREAS
TOWNSHIP OF QUINTON
SALEM COUNTY
WASTEWATER MANAGEMENT PLAN
SALEM COUNTY, NEW JERSEY**

SALEM COUNTY DEPARTMENT OF PLANNING AND AGRICULTURE
110 FIFTH STREET
SALEM, NEW JERSEY

LEGEND

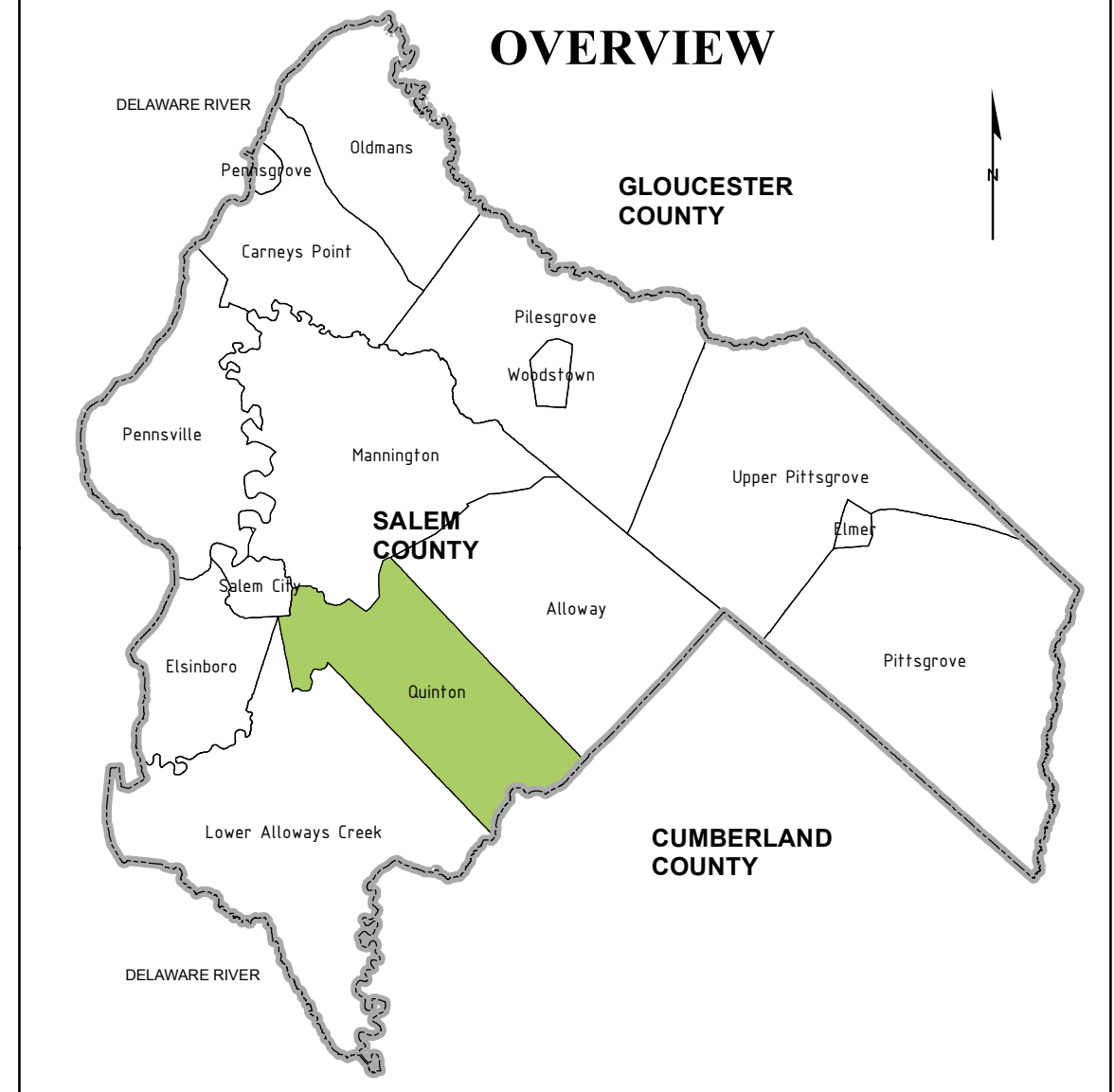
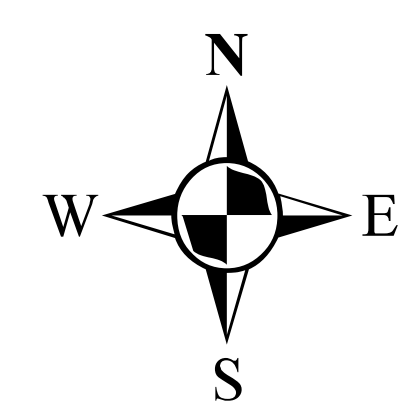
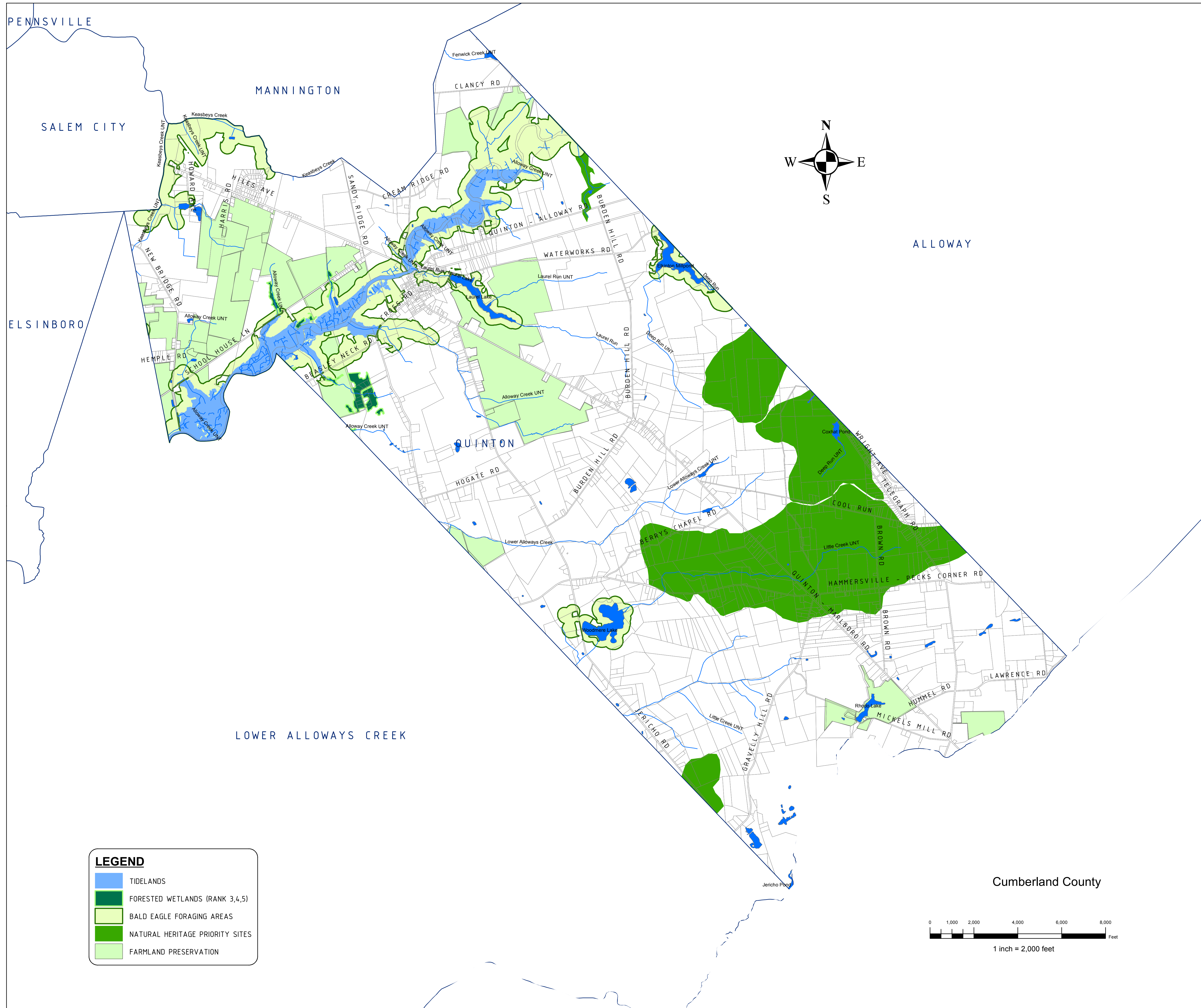
- OPEN SPACE
- FOREST (RANK 3,4,5)
- GRASSLANDS (RANK 3,4,5)
- EMERGENT (RANK 3,4,5)
- WETLANDS



SICKELS & ASSOCIATES INC.

SHERWOOD MEWS
833 KINGS HIGHWAY
WOODBURY, NEW JERSEY 08096-3110
NJ CERTIFICATE OF AUTHORIZATION
No. GA279949001
856-848-6800
FAX 848-8520

DRAWN BY: DJP	DATE: 3-5-12	SHEET: 1 of 1
CHECKED BY: DSP	DWG: F-SALEM WMP	FILE: 5363



NOTES:

"DEVELOPMENT IN AREAS MAPPED AS WETLANDS, FLOOD PRONE AREAS, SUITABLE HABITAT FOR ENDANGERED AND THREATENED SPECIES AS IDENTIFIED ON THE DEPARTMENT'S LANDSCAPE MAPS OF HABITAT FOR ENDANGERED, THREATENED AND OTHER PRIORITY WILDLIFE AS RANK 3.4 AND 5, NATURAL HERITAGE PRIORITY SITES, RIPARIAN ZONES, STEEP SLOPES, OR DESIGNATED RIVER AREAS MAY BE SUBJECT TO SPECIAL REGULATION UNDER FEDERAL OR STATE STATUTES OR RULES, AND THAT INTERESTED PERSONS SHOULD CHECK WITH THE DEPARTMENT FOR THE LATEST INFORMATION. DEPICTION OF ENVIRONMENTAL FEATURES SHALL BE FOR GENERAL INFORMATION PURPOSES ONLY, AND SHALL NOT BE CONSTRUED TO DEFINE THE LEGAL GEOGRAPHIC JURISDICTION OF SUCH STATUTES OR RULES"

BASEMAP INFORMATION INCLUDING PARCELS, ROADS AND MUNICIPAL BOUNDARY TAKEN FROM THE SALEM COUNTY DATABASE FILE.

"THIS MAP/PUBLICATION/REPORT WAS DEVELOPED USING NEW JERSEY DEPARTMENT OF ENVIRONMENTAL PROTECTION GEOGRAPHIC INFORMATION SYSTEM DIGITAL DATA, BUT THIS SECONDARY PRODUCT HAS NOT BEEN VERIFIED BY NJDEP AND IS NOT STATE-AUTHORIZED."

NO.	DATE	REVISION	BY:

ENVIRONMENTAL FEATURES - MAP 5C FORESTED WETLANDS, BALD EAGLE FORAGING PRIORITY SITES NON-DEGRADATION WATER AREAS
TOWNSHIP OF QUINTON
 SALEM COUNTY
 WASTEWATER MANAGEMENT PLAN
 SALEM COUNTY, NEW JERSEY



SALEM COUNTY DEPARTMENT OF PLANNING AND AGRICULTURE
 110 FIFTH STREET
 SALEM, NEW JERSEY

LEGEND

- TIDELANDS
- FORESTED WETLANDS (RANK 3,4,5)
- BALD EAGLE FORAGING AREAS
- NATURAL HERITAGE PRIORITY SITES
- FARMLAND PRESERVATION

