

**NOTES:**

"THIS (MAP/PUBLICATION/REPORT) WAS DEVELOPED USING NEW JERSEY DEPARTMENT OF ENVIRONMENTAL PROTECTION GEOGRAPHIC INFORMATION SYSTEM DIGITAL DATA, BUT THIS SECONDARY PRODUCT HAS NOT BEEN VERIFIED BY NJDEP AND IS NOT STATE-AUTHORIZED."

NO.	DATE	REVISION	BY:
		REVISIONS	

WASTEWATER MANAGEMENT  
PLAN PLANNING AREA - MAP 1  
**TOWNSHIP OF UPPER PITTSGROVE**  
SALEM COUNTY  
WASTEWATER MANAGEMENT PLAN  
SALEM COUNTY, NEW JERSEY



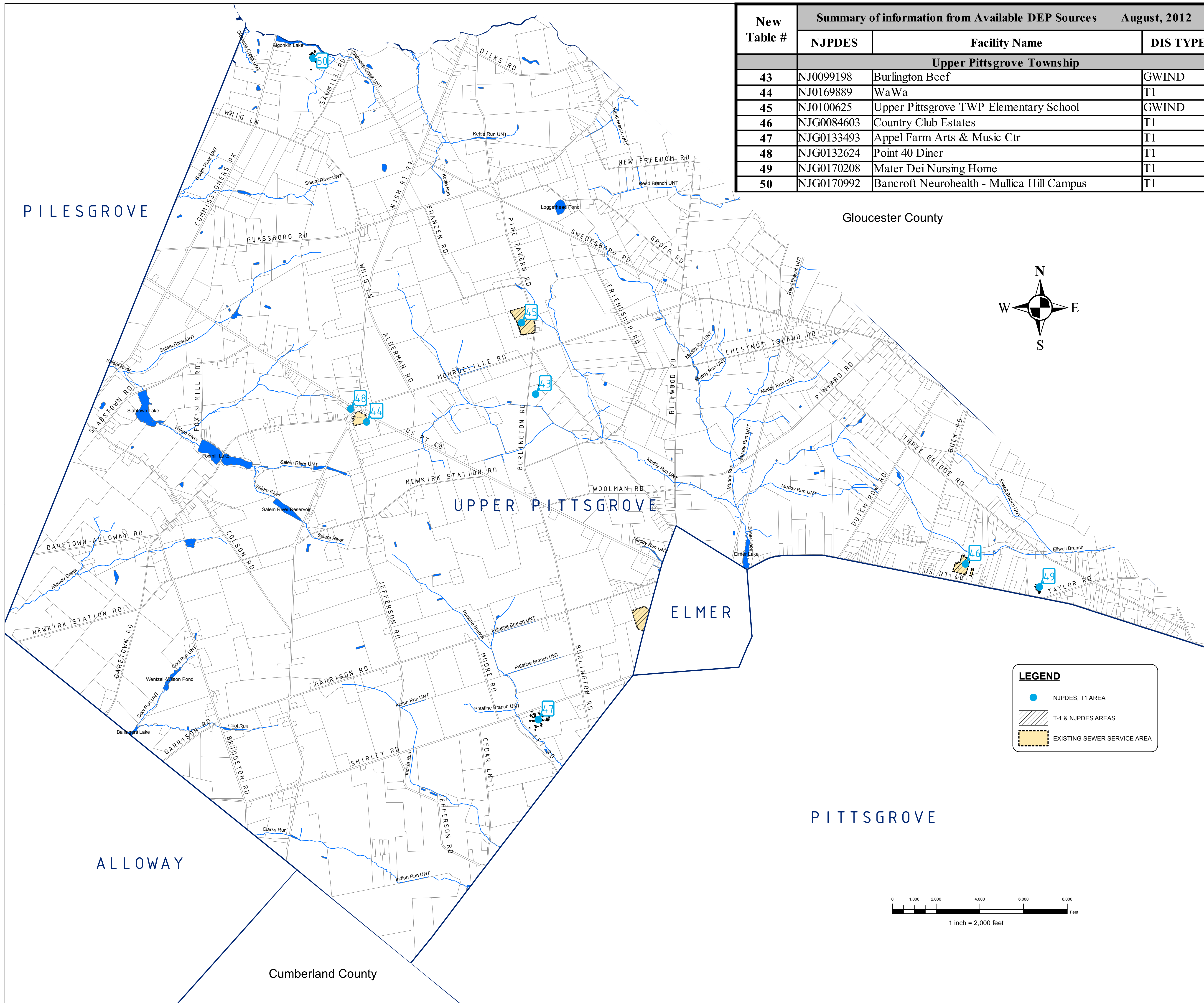
**SICKELS & ASSOCIATES INC.**  
SHERWOOD MEWS  
833 KINGS HIGHWAY  
WOODBURY, NEW JERSEY 08096-3110  
NJ CERTIFICATE OF AUTHORIZATION  
No. GA27949601 856-848-6800  
FAX 848-8520

DRAWN BY: DJP	DATE: 2-16-11	SHEET: 1 of 1
CHECKED BY: DSP	DWG: F-SALEM WMP	FILE: 5363

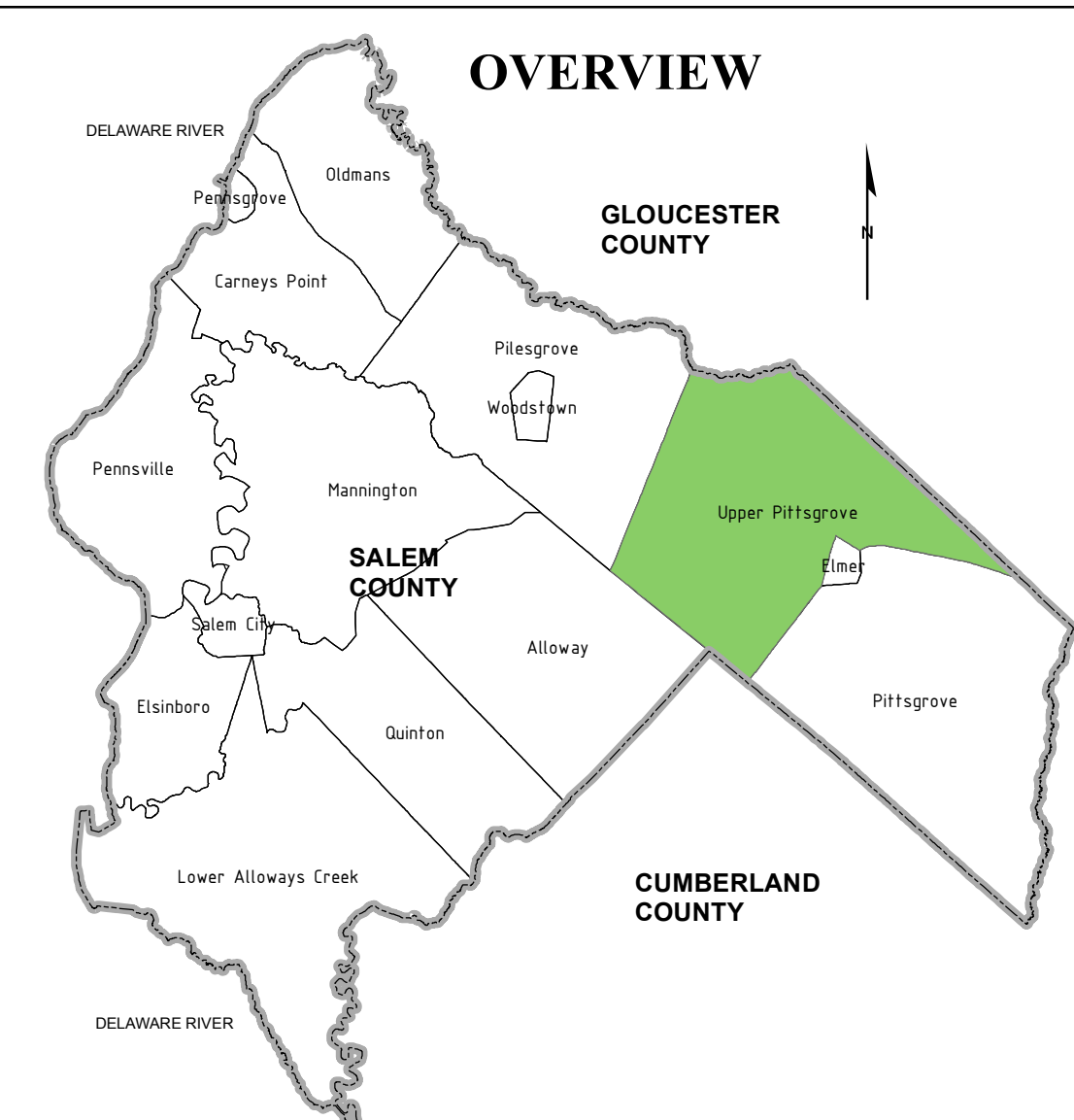
**LEGEND**

- STREAM
- LAKE
- HUC-11





New Table #	Summary of information from Available DEP Sources August, 2012		
	NJPDES	Facility Name	DIS TYPE
<b>Upper Pittsgrove Township</b>			
43	NJ0099198	Burlington Beef	GWIND
44	NJ0169889	WaWa	T1
45	NJ0100625	Upper Pittsgrove TWP Elementary School	GWIND
46	NJG0084603	Country Club Estates	T1
47	NJG0133493	Appel Farm Arts & Music Ctr	T1
48	NJG0132624	Point 40 Diner	T1
49	NJG0170208	Mater Dei Nursing Home	T1
50	NJG0170992	Bancroft Neurohealth - Mullica Hill Campus	T1



**NOTES:**

"THIS (MAP/PUBLICATION/REPORT) WAS DEVELOPED USING NEW JERSEY DEPARTMENT OF ENVIRONMENTAL PROTECTION GEOGRAPHIC INFORMATION SYSTEM DIGITAL DATA, BUT THIS SECONDARY PRODUCT HAS NOT BEEN VERIFIED BY NJDEP AND IS NOT STATE-AUTHORIZED."

NO.	DATE	REVISION	BY:
1.	12-18-13	REV NJPDES-T1 AREAS & TABLE PER NJDEP COMMENTS	DJP

**EXISTING FACILITIES AND SERVICE AREA - MAP 2**

**TOWNSHIP OF UPPER PITTSGROVE**  
SALEM COUNTY  
WASTEWATER MANAGEMENT PLAN  
SALEM COUNTY, NEW JERSEY



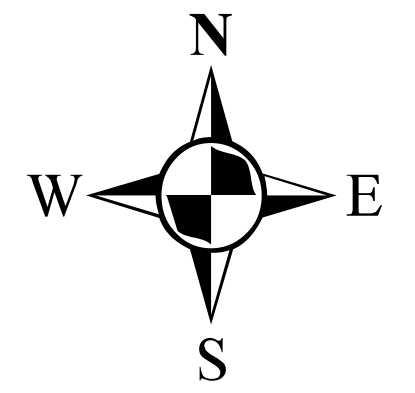
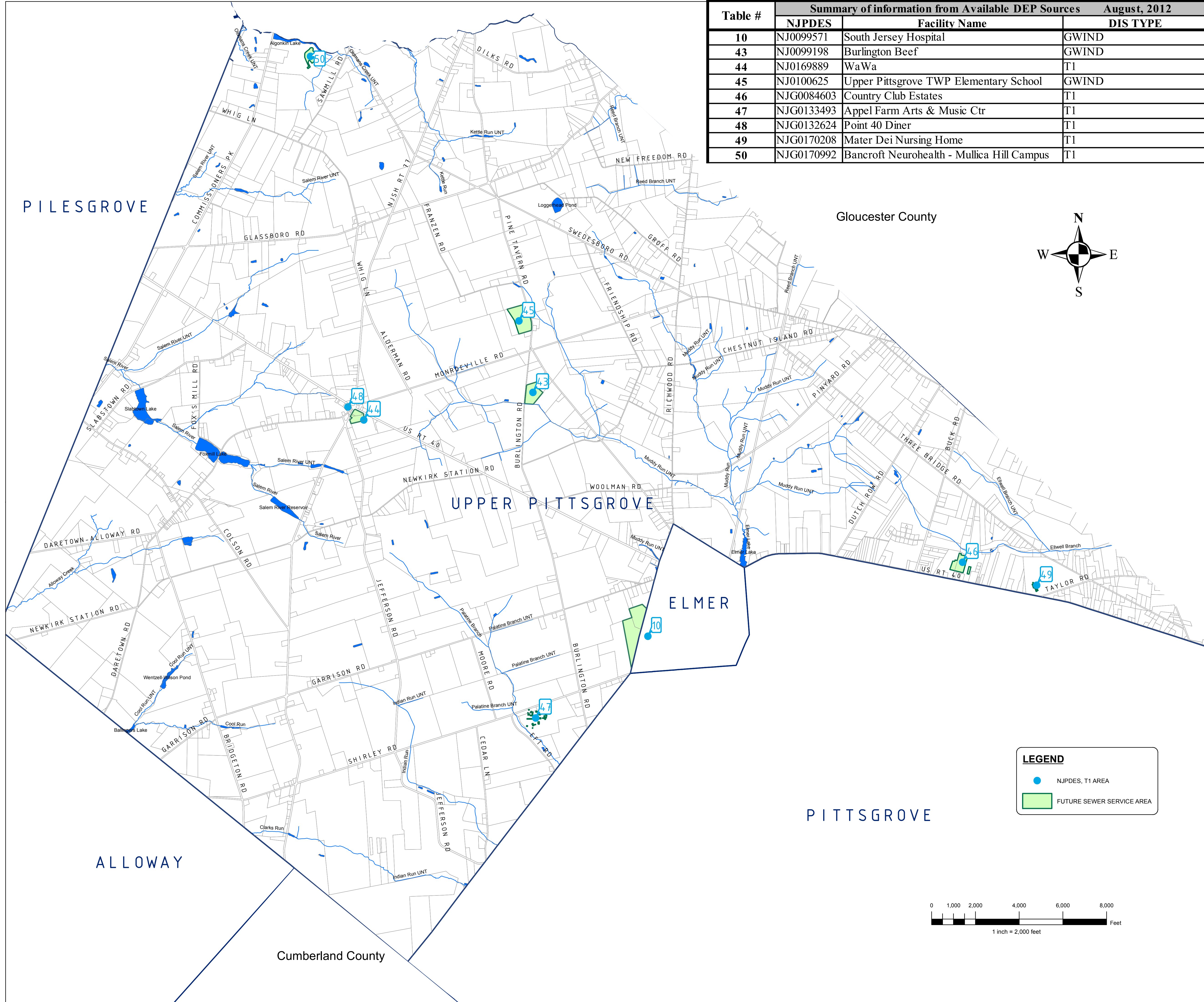
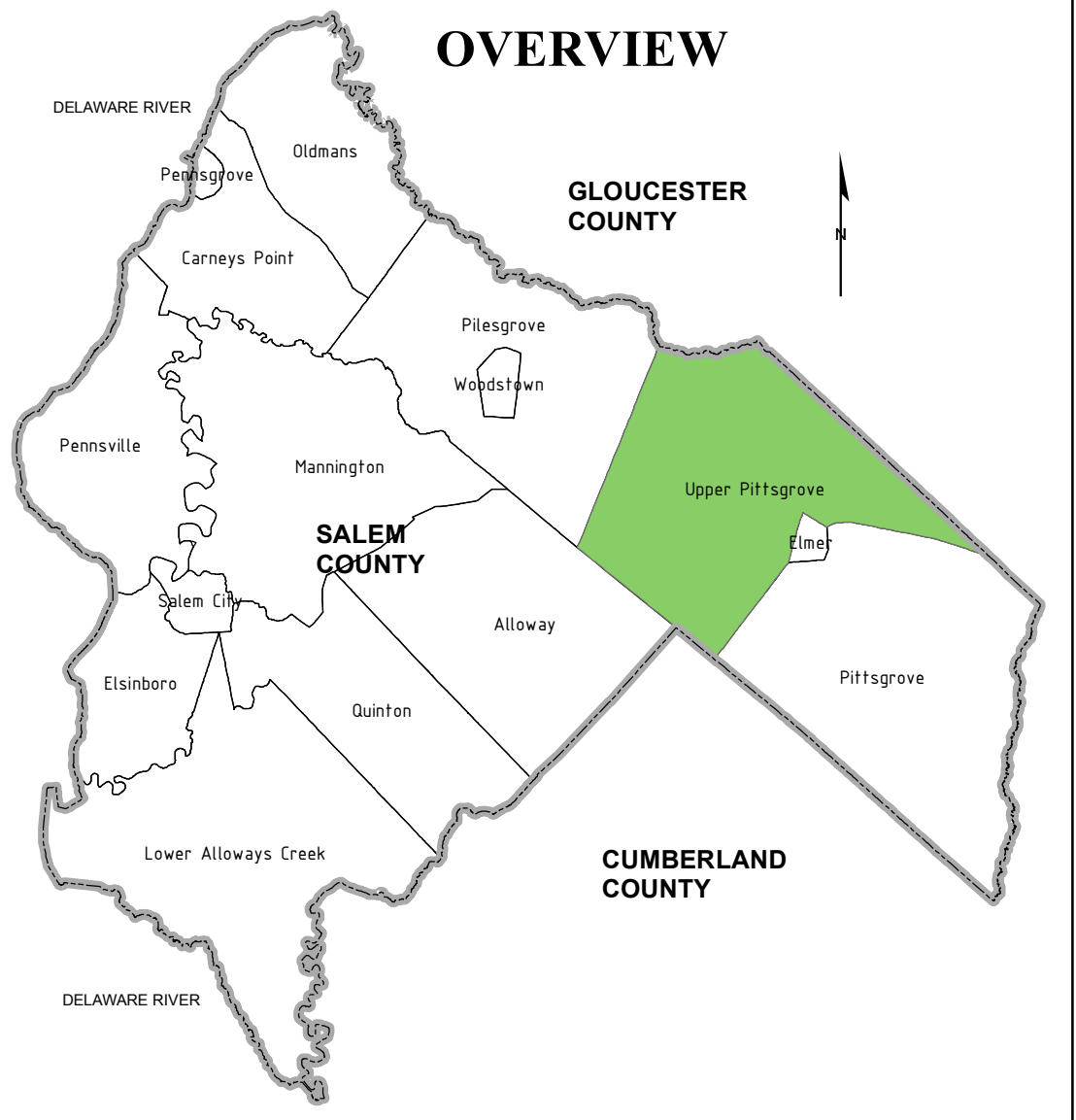
**SICKELS & ASSOCIATES INC.**

SHERWOOD MEWS  
833 KINGS HIGHWAY  
WOODBURY, NEW JERSEY 08096-3110  
NJ CERTIFICATE OF AUTHORIZATION  
No. GA27994900  
856-848-6800  
FAX 848-8520

DRAWN BY: DJP	DATE: 2-16-11	SHEET: 1 of 1
CHECKED BY: DSP	DWG: F-SALEM WMP	FILE: 5363



Summary of information from Available DEP Sources August, 2012			
Table #	NJPDES	Facility Name	DIS TYPE
10	NJ0099571	South Jersey Hospital	GWIND
43	NJ0099198	Burlington Beef	GWIND
44	NJ0169889	WaWa	T1
45	NJ0100625	Upper Pittsgrove TWP Elementary School	GWIND
46	NJG0084603	Country Club Estates	T1
47	NJG0133493	Appel Farm Arts & Music Ctr	T1
48	NJG0132624	Point 40 Diner	T1
49	NJG0170208	Mater Dei Nursing Home	T1
50	NJG0170992	Bancroft Neurohealth - Mullica Hill Campus	T1



**NOTES:**

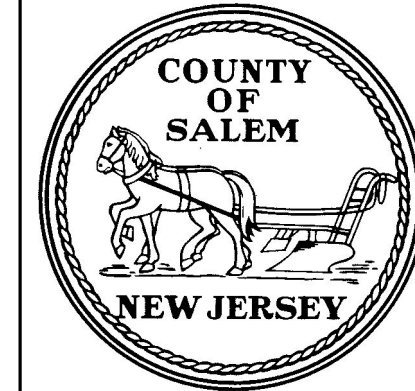
"PLEASE NOTE THAT WHERE THE VISUAL DEPICTION OF SSA DOES NOT EXPLICITLY INDICATE THE SPECIFIC SEWER SERVICE AREA ASSOCIATED WITH THE WASTEWATER TREATMENT FACILITIES, THE STATEWIDE DIGITIZED SEWER SERVICE AREA MAPPING DOES. THE PUBLICALLY AVAILABLE SEWER SERVICE AREA MAPPING IS AVAILABLE FOR VIEWING ON NJ GEO-WEB AT [HTTP://WWW.NJ.GOV/DEP/GIS/GEOWEBSPASH.HTM](http://www.nj.gov/dep/gis/geoweb/splash.htm). IT IS ALSO AVAILABLE FOR DOWNLOAD TO USE IN ARCGIS AT [HTTP://WWW.NJ.GOV/DEP/GIS/STATESHP.HTML](http://www.nj.gov/dep/gis/stateshp.html)."

"THIS (MAP/PUBLICATION/REPORT) WAS DEVELOPED USING NEW JERSEY DEPARTMENT OF ENVIRONMENTAL PROTECTION GEOGRAPHIC INFORMATION SYSTEM DIGITAL DATA, BUT THIS SECONDARY PRODUCT HAS NOT BEEN VERIFIED BY NJDEP AND IS NOT STATE-AUTHORIZED."

NO.	DATE	REVISION	BY:
3.	9-2-15	ADDED NOTE PER NJDEP COMMENTS	DJP
2.	7-15-14	REV PER NJDEP COMMENTS	DJP
1.	12-18-13	REV NJPDES-T1 AREAS & TABLE PER NJDEP COMMENTS	DJP

**FUTURE SERVICE AREA - MAP 3**

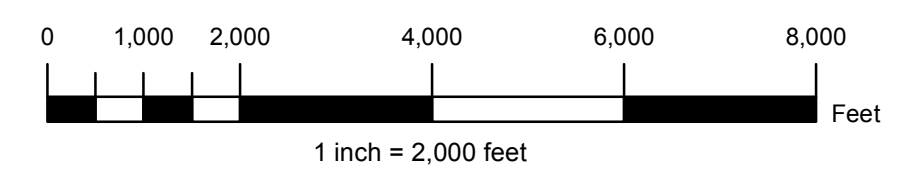
**TOWNSHIP OF UPPER PITTSGROVE**  
SALEM COUNTY  
WASTEWATER MANAGEMENT PLAN  
SALEM COUNTY, NEW JERSEY



SALEM COUNTY DEPARTMENT OF PLANNING AND AGRICULTURE  
110 FIFTH STREET  
SALEM, NEW JERSEY

**LEGEND**

- NJPDES, T1 AREA
- FUTURE SEWER SERVICE AREA

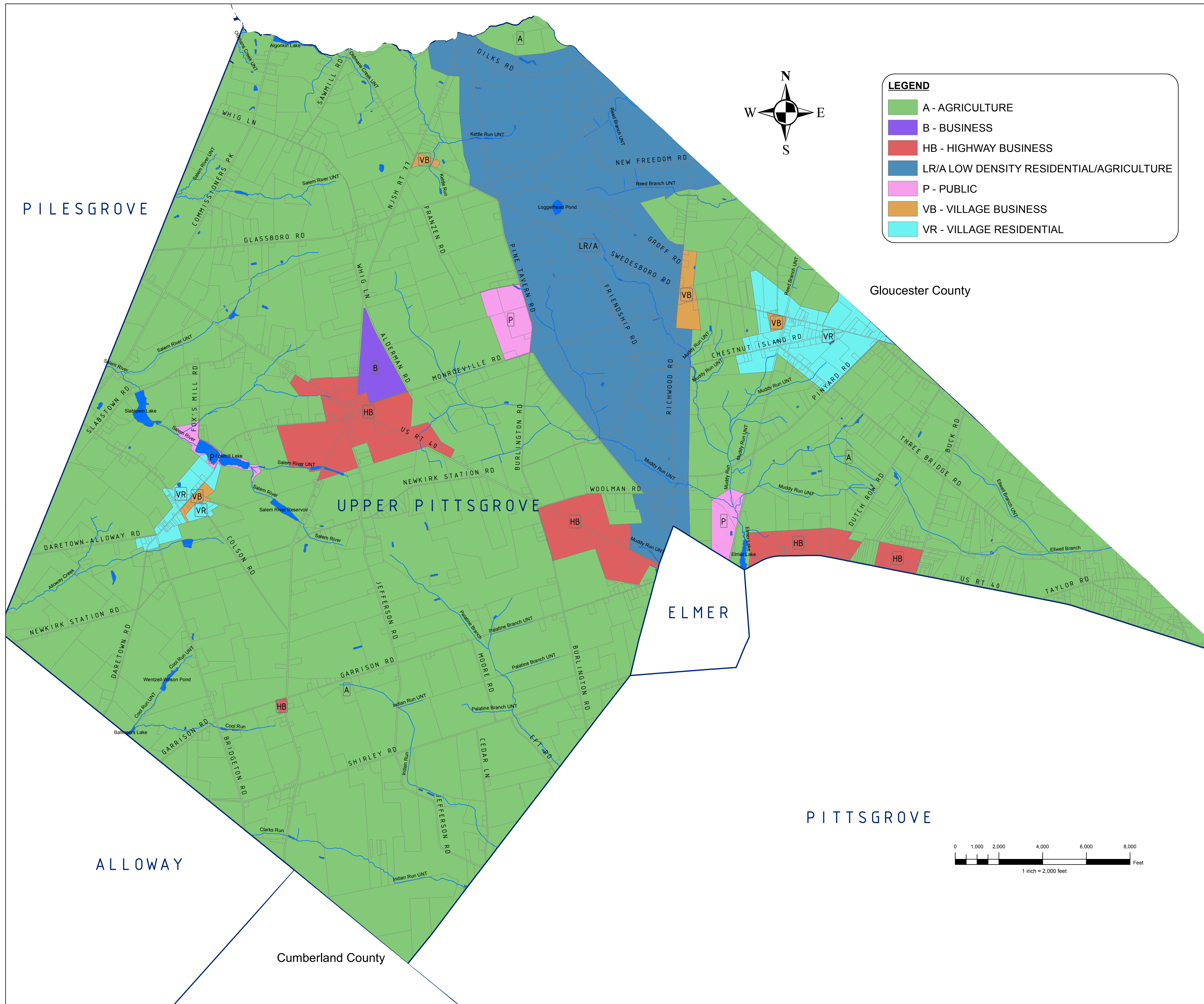


**SICKELS & ASSOCIATES INC.**

SHERWOOD MEWS  
833 KINGS HIGHWAY  
WOODBURY, NEW JERSEY 08096-3110  
NJ CERTIFICATE OF AUTHORIZATION  
No. GA27949693  
856-848-6800  
FAX 848-8520

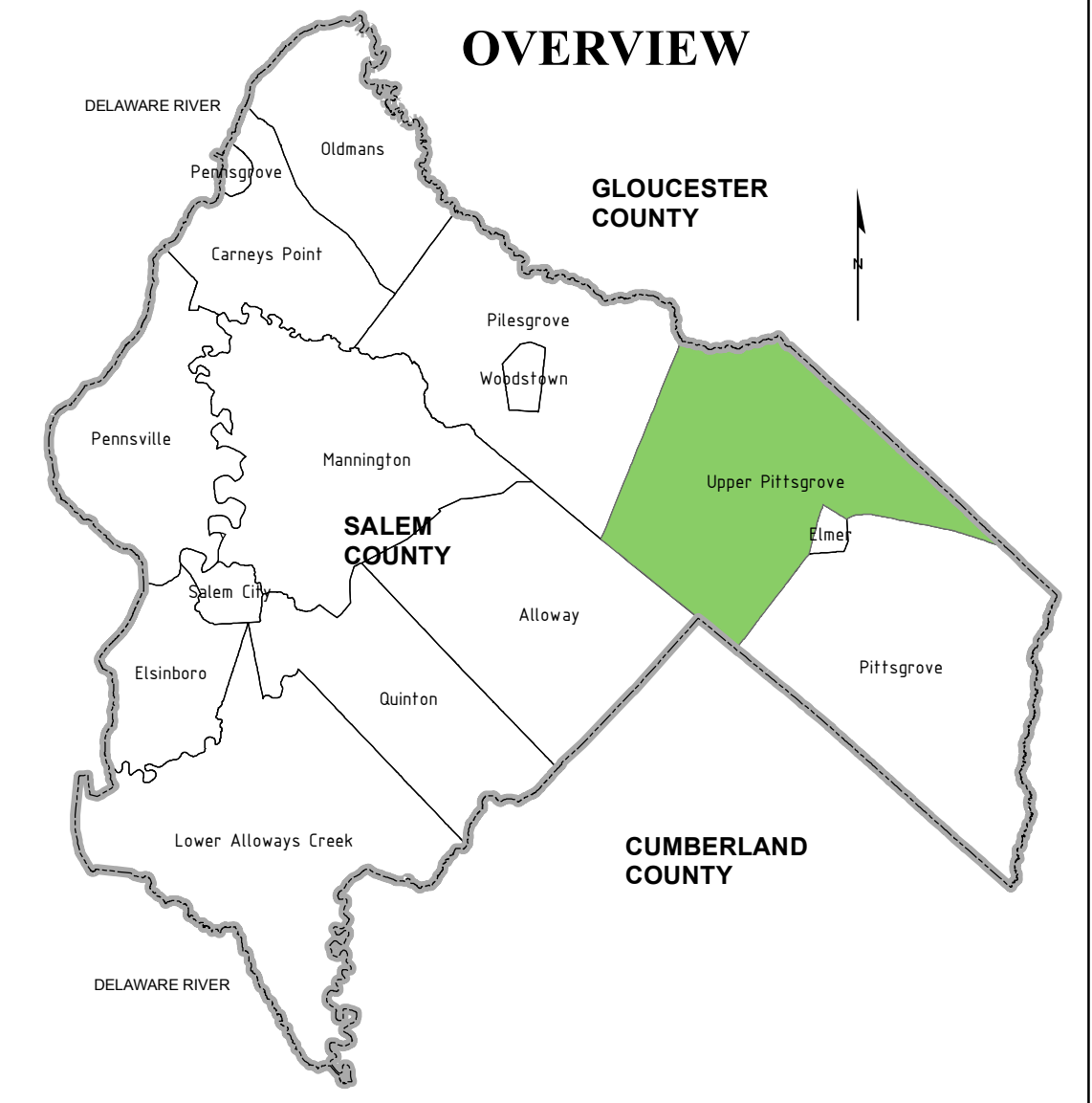
DRAWN BY: DJP	DATE: 2-16-11	SHEET: 1 of 1
CHECKED BY: DSP	DWG: F-SALEM WMP	FILE: 5363





**LEGEND**

- A - AGRICULTURE
- B - BUSINESS
- HB - HIGHWAY BUSINESS
- LR/A LOW DENSITY RESIDENTIAL/AGRICULTURE
- P - PUBLIC
- VB - VILLAGE BUSINESS
- VR - VILLAGE RESIDENTIAL



**NOTES:**

ZONING MAP TAKEN FROM SALEM COUNTY DATABASE FILE DATED 12-8-10. ZONING MAP DATED 3-2006.

"THIS (MAP/PUBLICATION/REPORT) WAS DEVELOPED USING NEW JERSEY DEPARTMENT OF ENVIRONMENTAL PROTECTION GEOGRAPHIC INFORMATION SYSTEM DIGITAL DATA, BUT THIS SECONDARY PRODUCT HAS NOT BEEN VERIFIED BY NJDEP AND IS NOT STATE-AUTHORIZED."

NO.	DATE	REVISION	BY:

**ZONING - MAP 4**

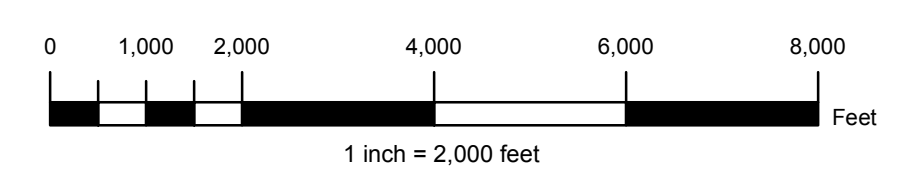
**TOWNSHIP OF UPPER PITTSGROVE**  
SALEM COUNTY  
WASTEWATER MANAGEMENT PLAN  
SALEM COUNTY, NEW JERSEY

**SALEM COUNTY DEPARTMENT OF PLANNING AND AGRICULTURE**  
110 FIFTH STREET  
SALEM, NEW JERSEY

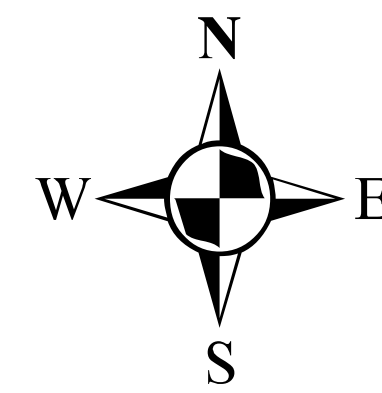
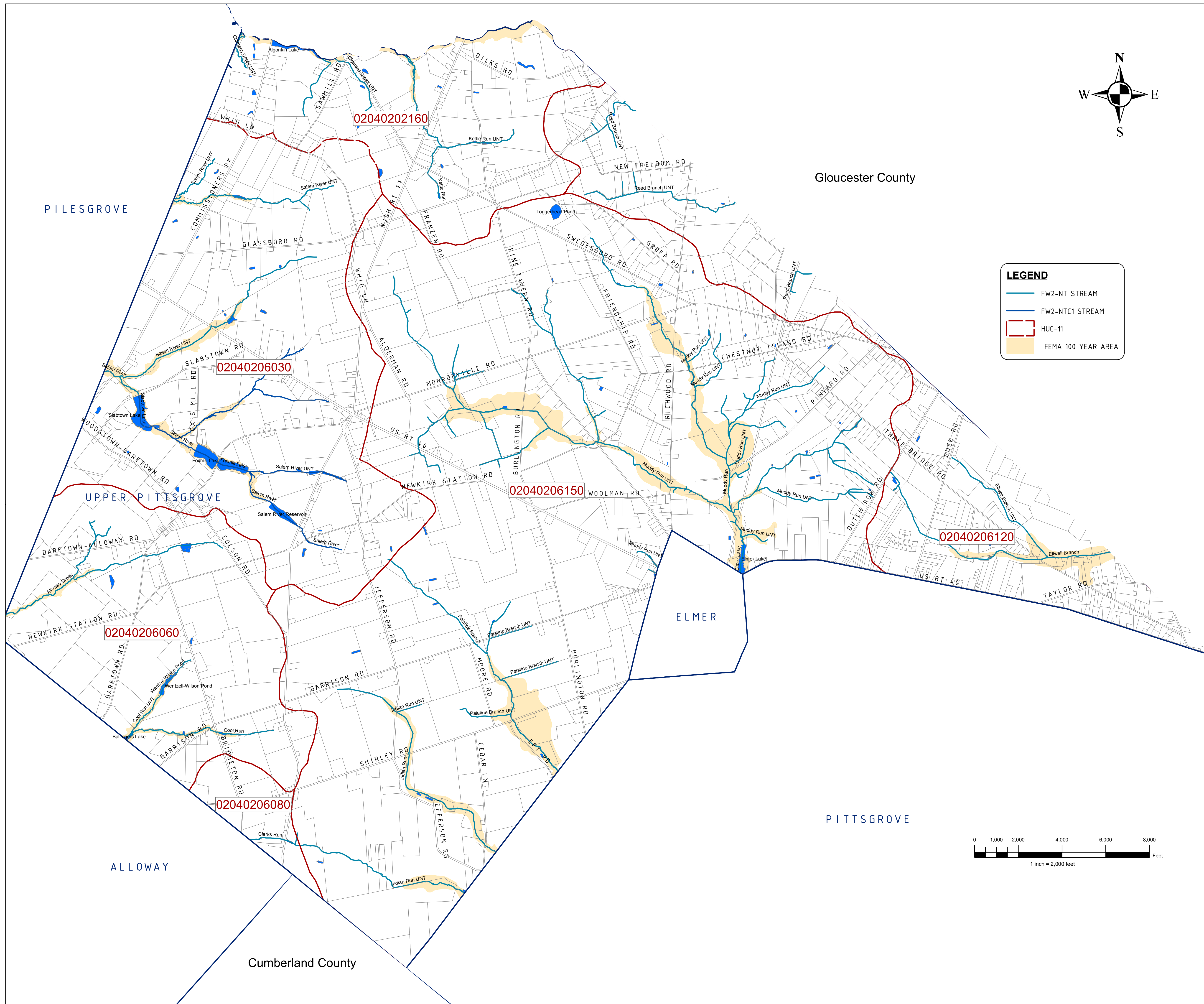
**SICKELS & ASSOCIATES INC.**

SHERWOOD MEWS  
833 KINGS HIGHWAY  
WOODBURY, NEW JERSEY 08096-3110  
NJ CERTIFICATE OF AUTHORIZATION  
No. GA27949693 856-848-6800  
FAX 848-8520

DRAWN BY: DJP	DATE: 2-16-11	SHEET: 1 of 1
CHECKED BY: DSP	DWG: F-SALEM WMP	FILE: 5363

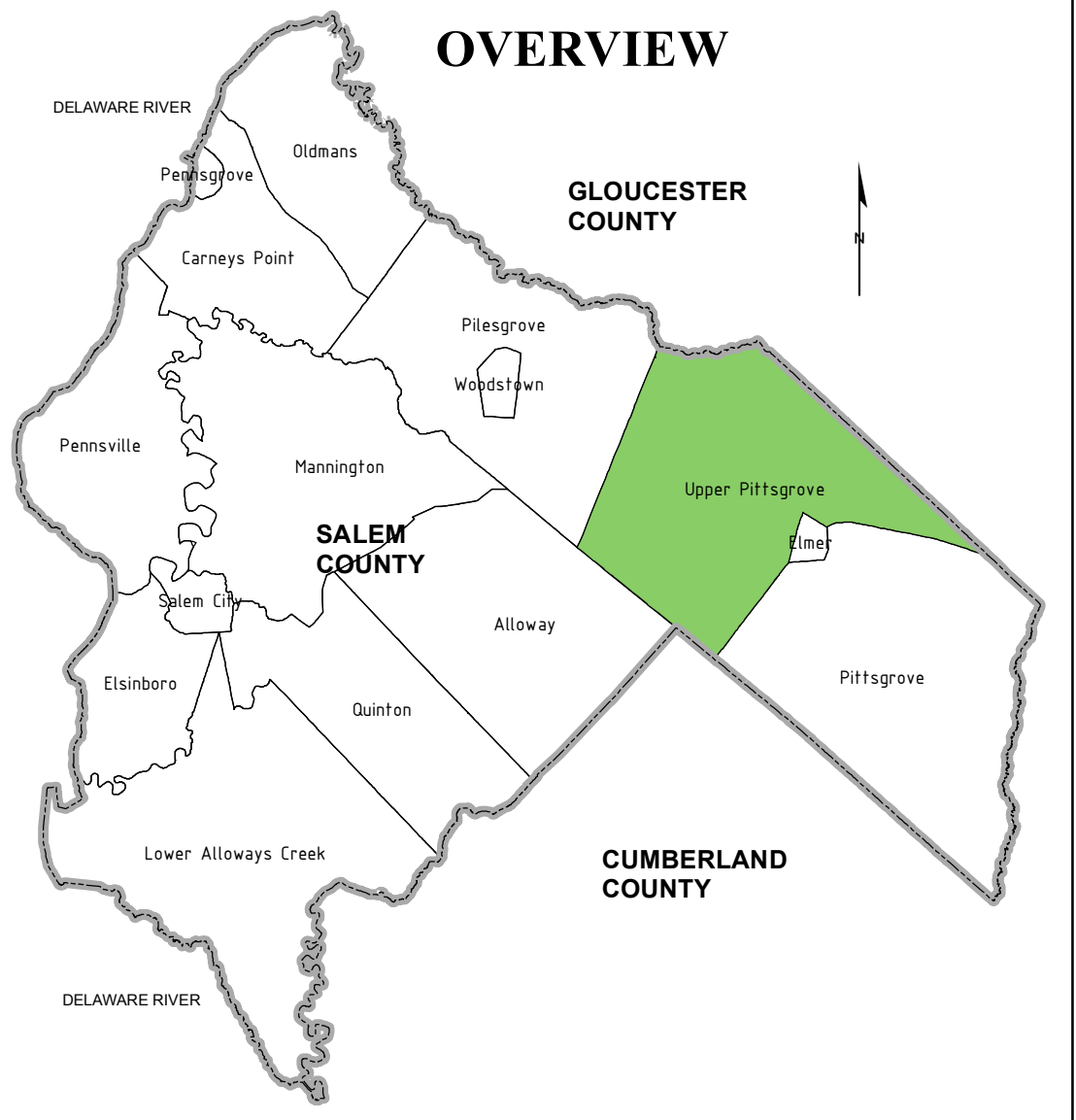






**LEGEND**

- FW2-NT STREAM
- FW2-NTC1 STREAM
- HUC-11
- FEMA 100 YEAR AREA



**NOTES:**

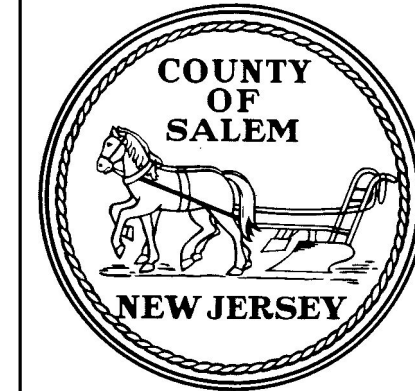
"DEVELOPMENT IN AREAS MAPPED AS WETLANDS, FLOOD PRONE AREAS, SUITABLE HABITAT FOR ENDANGERED AND THREATENED SPECIES AS IDENTIFIED ON THE DEPARTMENT'S LANDSCAPE MAPS OF HABITAT FOR ENDANGERED, THREATENED AND OTHER PRIORITY WILDLIFE AS RANK 3.4 AND 5, NATURAL HERITAGE PRIORITY SITES, RIPARIAN ZONES, STEEP SLOPES, OR DESIGNATED RIVER AREAS MAY BE SUBJECT TO SPECIAL REGULATION UNDER FEDERAL OR STATE STATUTES OR RULES, AND THAT INTERESTED PERSONS SHOULD CHECK WITH THE DEPARTMENT FOR THE LATEST INFORMATION. DEPICTION OF ENVIRONMENTAL FEATURES SHALL BE FOR GENERAL INFORMATION PURPOSES ONLY, AND SHALL NOT BE CONSTRUED TO DEFINE THE LEGAL GEOGRAPHIC JURISDICTION OF SUCH STATUTES OR RULES"

BASEMAP INFORMATION INCLUDING PARCELS, ROADS AND MUNICIPAL BOUNDARY TAKEN FROM THE SALEM COUNTY DATABASE FILE.

"THIS (MAP/PUBLICATION/REPORT) WAS DEVELOPED USING NEW JERSEY DEPARTMENT OF ENVIRONMENTAL PROTECTION GEOGRAPHIC INFORMATION SYSTEM DIGITAL DATA, BUT THIS SECONDARY PRODUCT HAS NOT BEEN VERIFIED BY NJDEP AND IS NOT STATE-AUTHORIZED."

NO.	DATE	REVISION	BY:
		REVISIONS	

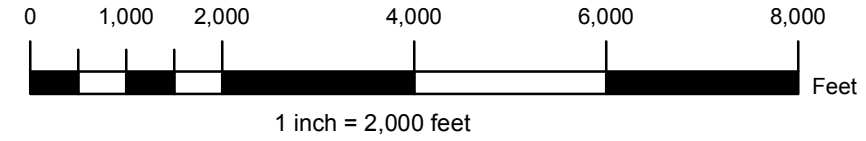
**ENVIRONMENTAL FEATURES - MAP 5A**  
**HUC 11, FEMA AREAS**  
**TOWNSHIP OF UPPER PITTS GROVE**  
 SALEM COUNTY  
**WASTEWATER MANAGEMENT PLAN**  
 SALEM COUNTY, NEW JERSEY



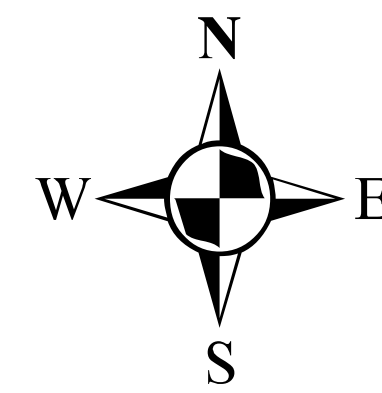
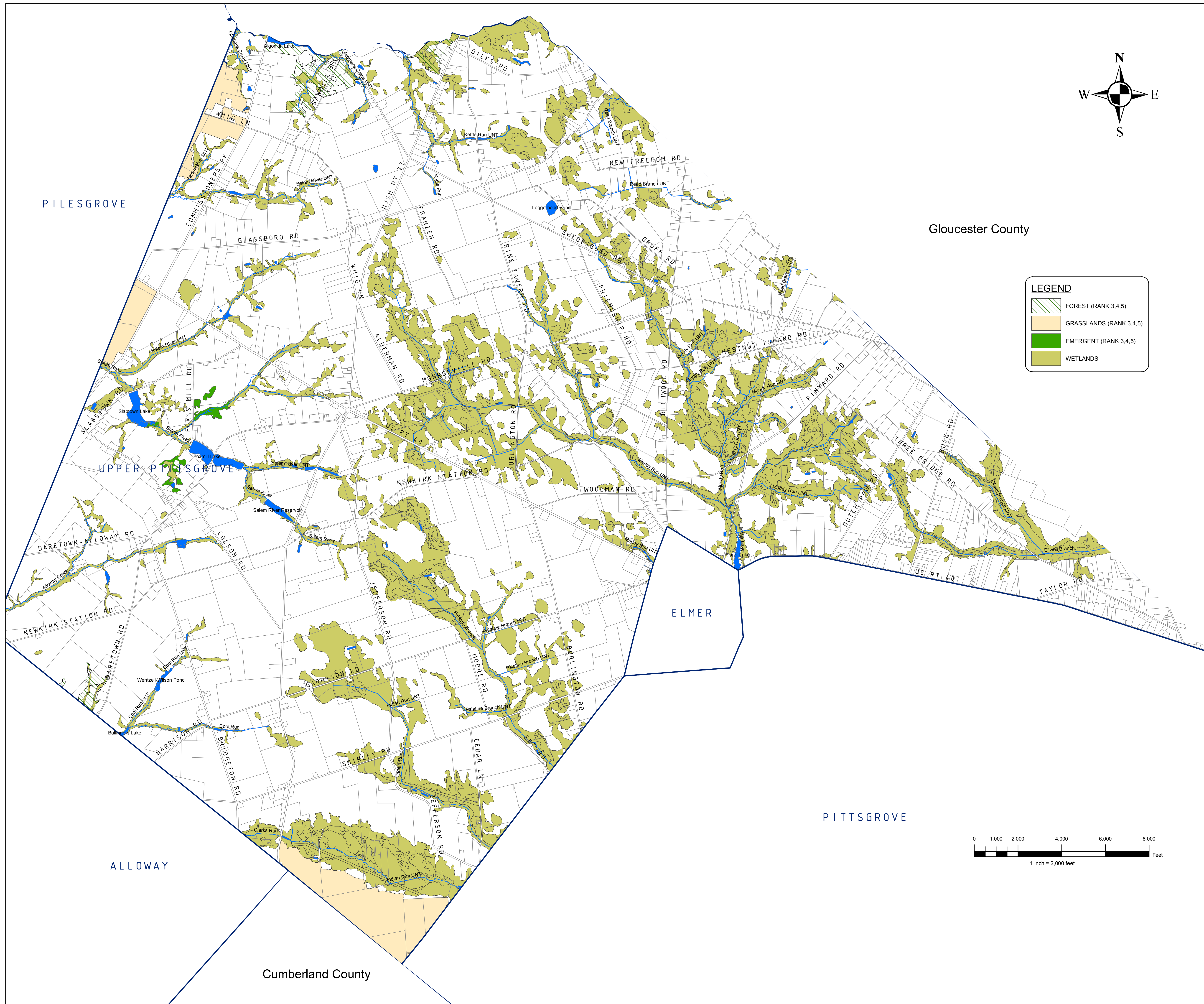
**SALEM COUNTY DEPARTMENT OF PLANNING AND AGRICULTURE**  
 110 FIFTH STREET  
 SALEM, NEW JERSEY

**SICKELS & ASSOCIATES INC.**  
 SHERWOOD MEWS  
 833 KINGS HIGHWAY  
 WOODBURY, NEW JERSEY 08096-3110  
 NJ CERTIFICATE OF AUTHORIZATION  
 No. GA27949600 856-848-6800  
 FAX 848-8520

DRAWN BY: DJP	DATE: 3-5-12	SHEET: 1 of 1
CHECKED BY: DSP	DWG: F-SALEM WMP	FILE: 5363



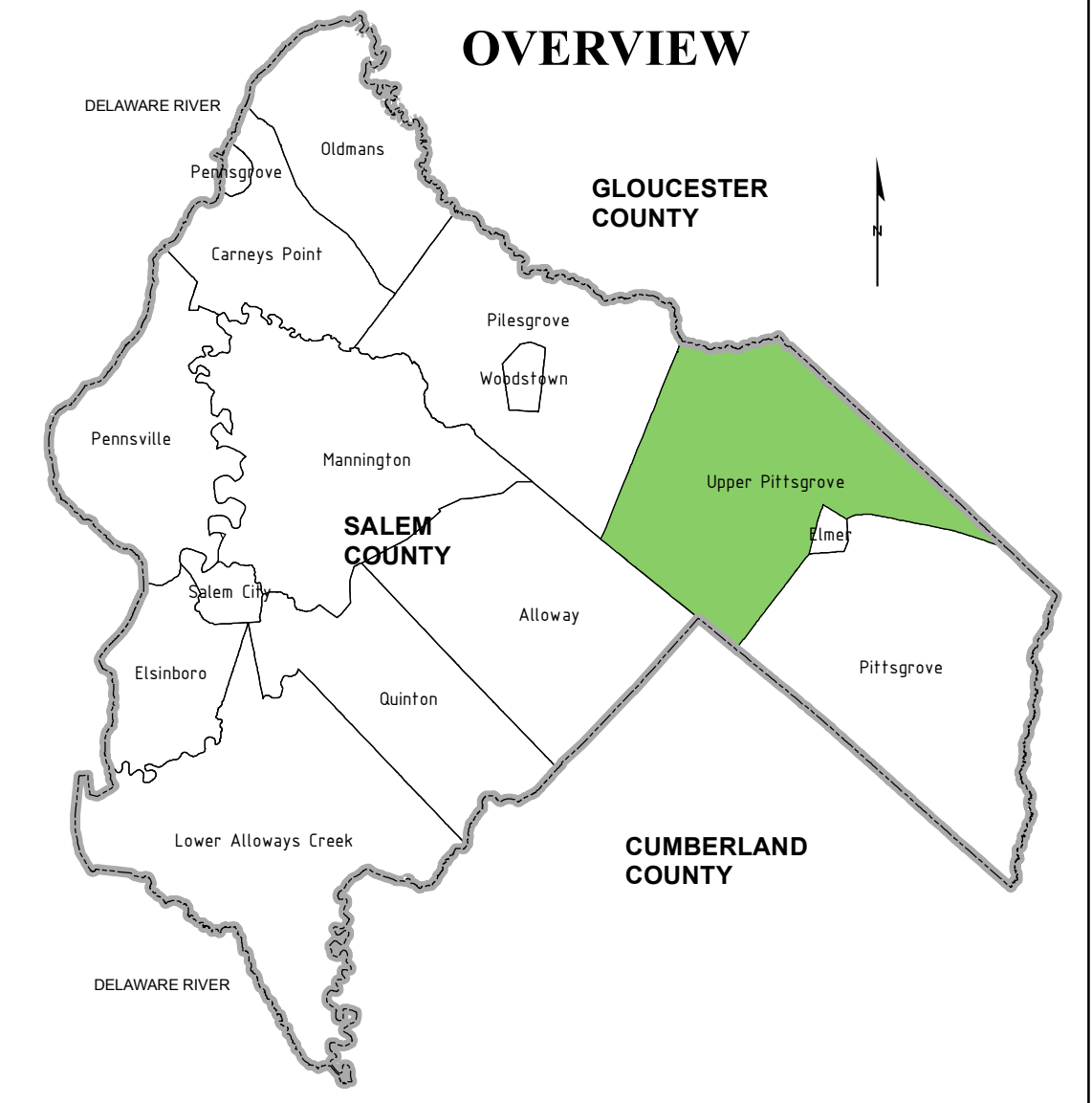
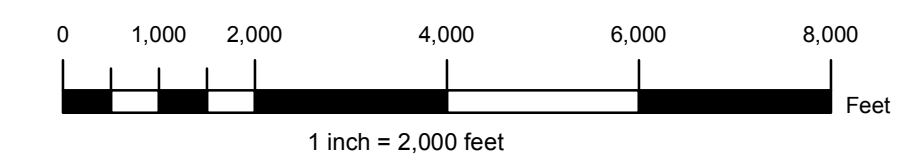




Gloucester County

**LEGEND**

- FOREST (RANK 3,4,5)
- GRASSLANDS (RANK 3,4,5)
- EMERGENT (RANK 3,4,5)
- WETLANDS



**NOTES:**

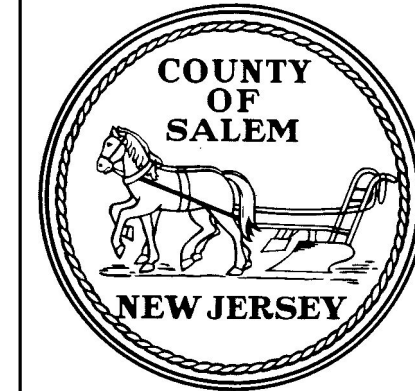
"DEVELOPMENT IN AREAS MAPPED AS WETLANDS, FLOOD PRONE AREAS, SUITABLE HABITAT FOR ENDANGERED AND THREATENED SPECIES AS IDENTIFIED ON THE DEPARTMENT'S LANDSCAPE MAPS OF HABITAT FOR ENDANGERED AND OTHER PRIORITY WILDLIFE AS RANK 3.4 AND 5, NATURAL HERITAGE PRIORITY SITES, RIPARIAN ZONES, STEEP SLOPES, OR DESIGNATED RIVER AREAS MAY BE SUBJECT TO SPECIAL REGULATION UNDER FEDERAL OR STATE STATUTES OR RULES, AND THAT INTERESTED PERSONS SHOULD CHECK WITH THE DEPARTMENT FOR THE LATEST INFORMATION. DEPICTION OF ENVIRONMENTAL FEATURES SHALL BE FOR GENERAL INFORMATION PURPOSES ONLY, AND SHALL NOT BE CONSTRUED TO DEFINE THE LEGAL GEOGRAPHIC JURISDICTION OF SUCH STATUTES OR RULES"

BASEMAP INFORMATION INCLUDING PARCELS, ROADS AND MUNICIPAL BOUNDARY TAKEN FROM THE SALEM COUNTY DATABASE FILE.

"THIS (MAP/PUBLICATION/REPORT) WAS DEVELOPED USING NEW JERSEY DEPARTMENT OF ENVIRONMENTAL PROTECTION GEOGRAPHIC INFORMATION SYSTEM DIGITAL DATA, BUT THIS SECONDARY PRODUCT HAS NOT BEEN VERIFIED BY NJDEP AND IS NOT STATE-AUTHORIZED."

NO.	DATE	REVISION	BY:

**ENVIRONMENTAL FEATURES - MAP 5B**  
**WETLANDS, GRASSLANDS, EMERGENT,**  
**FOREST AREAS**  
**TOWNSHIP OF UPPER PITTS GROVE**  
 SALEM COUNTY  
 WASTEWATER MANAGEMENT PLAN  
 SALEM COUNTY, NEW JERSEY



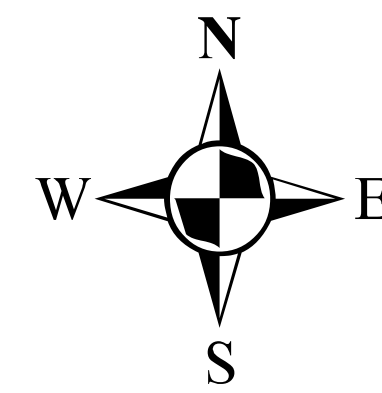
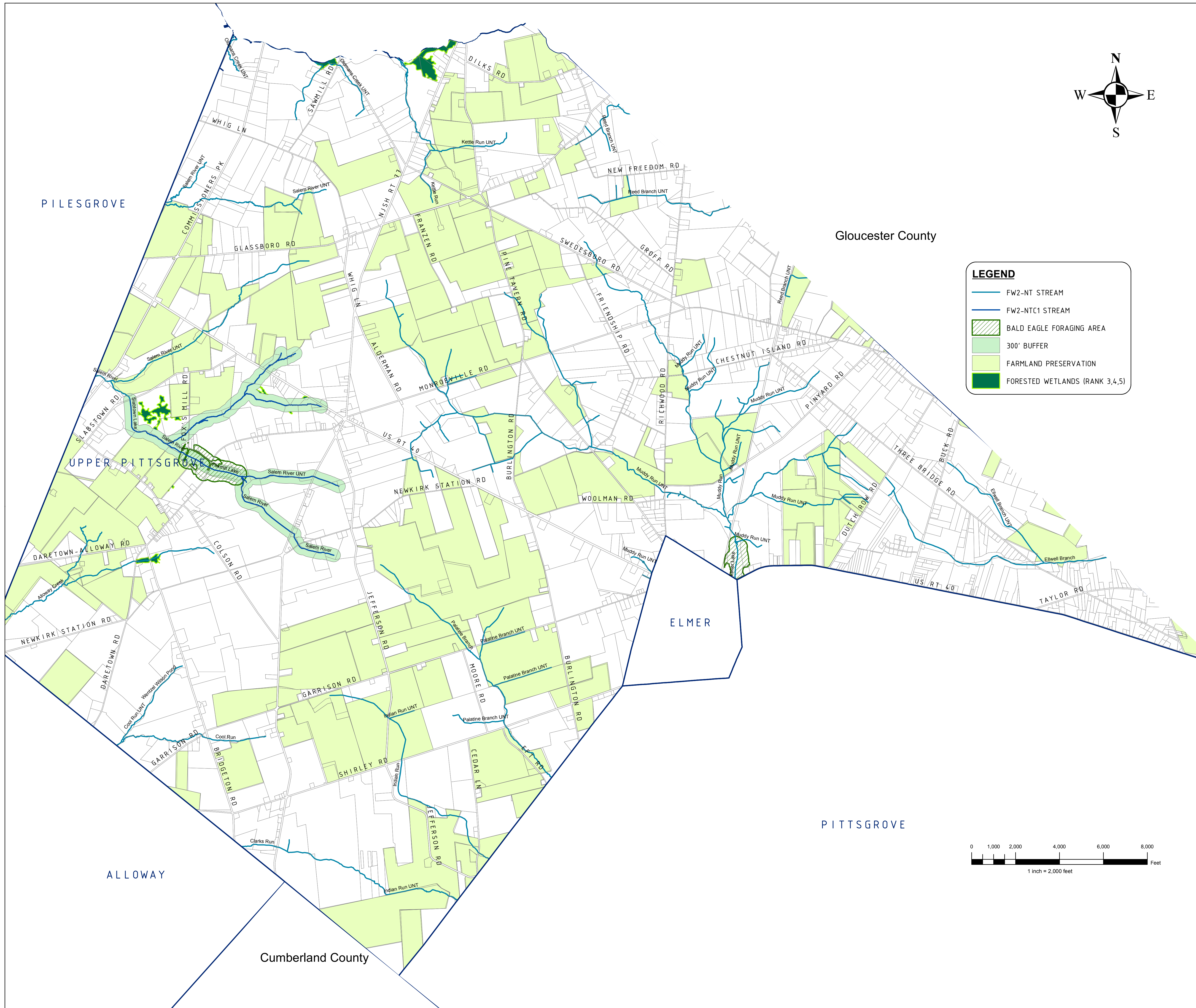
SALEM COUNTY DEPARTMENT OF  
 PLANNING AND AGRICULTURE  
 110 FIFTH STREET  
 SALEM, NEW JERSEY

**SICKELS & ASSOCIATES, INC.**

SHERWOOD MEWS  
 833 KINGS HIGHWAY  
 WOODBURY, NEW JERSEY 08096-3110  
 NJ CERTIFICATE OF AUTHORIZATION  
 No. GA27949600 856-848-6800  
 FAX 848-8520

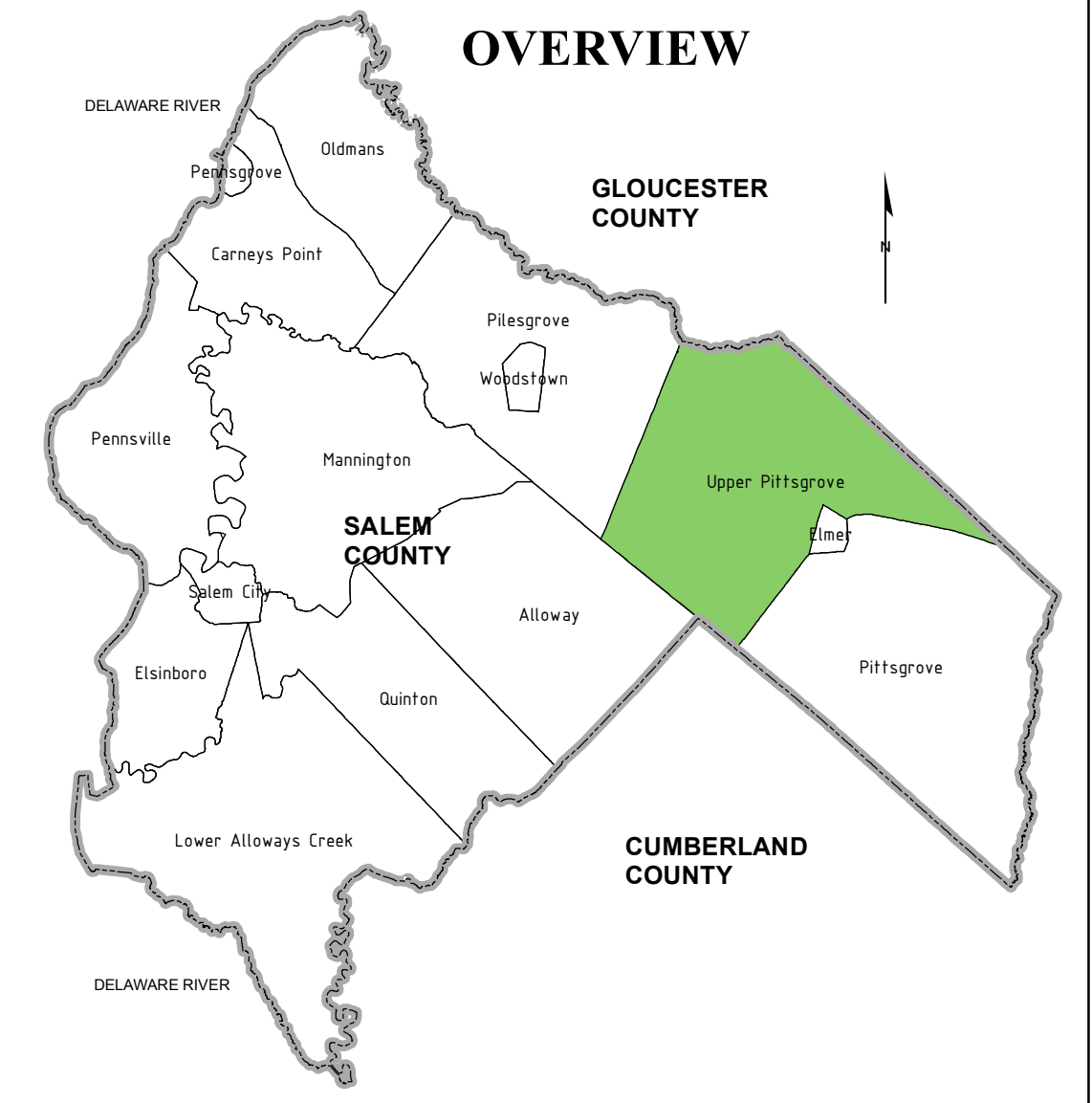
DRAWN BY: DJP	DATE: 3-5-12	SHEET: 1 of 1
CHECKED BY: DSP	DWG: F-SALEM WMP	FILE: 5363





**LEGEND**

- FW2-NT STREAM
- FW2-NTC1 STREAM
- BALD EAGLE FORAGING AREA
- 300' BUFFER
- FARMLAND PRESERVATION
- FORESTED WETLANDS (RANK 3,4,5)



**NOTES:**

"DEVELOPMENT IN AREAS MAPPED AS WETLANDS, FLOOD PRONE AREAS, SUITABLE HABITAT FOR ENDANGERED AND THREATENED SPECIES AS IDENTIFIED ON THE DEPARTMENT'S LANDSCAPE MAPS OF HABITAT FOR ENDANGERED, THREATENED AND OTHER PRIORITY WILDLIFE AS RANK 3.4 AND 5, NATURAL HERITAGE PRIORITY SITES, RIPARIAN ZONES, STEEP SLOPES, OR DESIGNATED RIVER AREAS MAY BE SUBJECT TO SPECIAL REGULATION UNDER FEDERAL OR STATE STATUTES OR RULES, AND THAT INTERESTED PERSONS SHOULD CHECK WITH THE DEPARTMENT FOR THE LATEST INFORMATION. DEPICTION OF ENVIRONMENTAL FEATURES SHALL BE FOR GENERAL INFORMATION PURPOSES ONLY, AND SHALL NOT BE CONSTRUED TO DEFINE THE LEGAL GEOGRAPHIC JURISDICTION OF SUCH STATUTES OR RULES"

BASEMAP INFORMATION INCLUDING PARCELS, ROADS AND MUNICIPAL BOUNDARY TAKEN FROM THE SALEM COUNTY DATABASE FILE.

"THIS (MAP/PUBLICATION/REPORT) WAS DEVELOPED USING NEW JERSEY DEPARTMENT OF ENVIRONMENTAL PROTECTION GEOGRAPHIC INFORMATION SYSTEM DIGITAL DATA, BUT THIS SECONDARY PRODUCT HAS NOT BEEN VERIFIED BY NJDEP AND IS NOT STATE-AUTHORIZED."

NO.	DATE	REVISION	BY:

**ENVIRONMENTAL FEATURES - MAP 5C FORESTED WETLANDS, BALD EAGLE FORAGING, FARMLAND PRESERVATION, 300' CATAGORY ONE BUFFER**  
**TOWNSHIP OF UPPER PITTSGROVE**  
 SALEM COUNTY  
 WASTEWATER MANAGEMENT PLAN  
 SALEM COUNTY, NEW JERSEY



**SICKELS & ASSOCIATES INC.**

SHERWOOD MEWS  
 833 KINGS HIGHWAY  
 WOODBURY, NEW JERSEY 08096-3110  
 NJ CERTIFICATE OF AUTHORIZATION  
 No. GA27949600 856-848-6800  
 FAX 848-8520

DRAWN BY: DJP DATE: 3-5-12 SHEET: 1 of 1  
 CHECKED BY: DSP DWG: F-SALEM WMP FILE: 5363