

DELAWARE RIVER

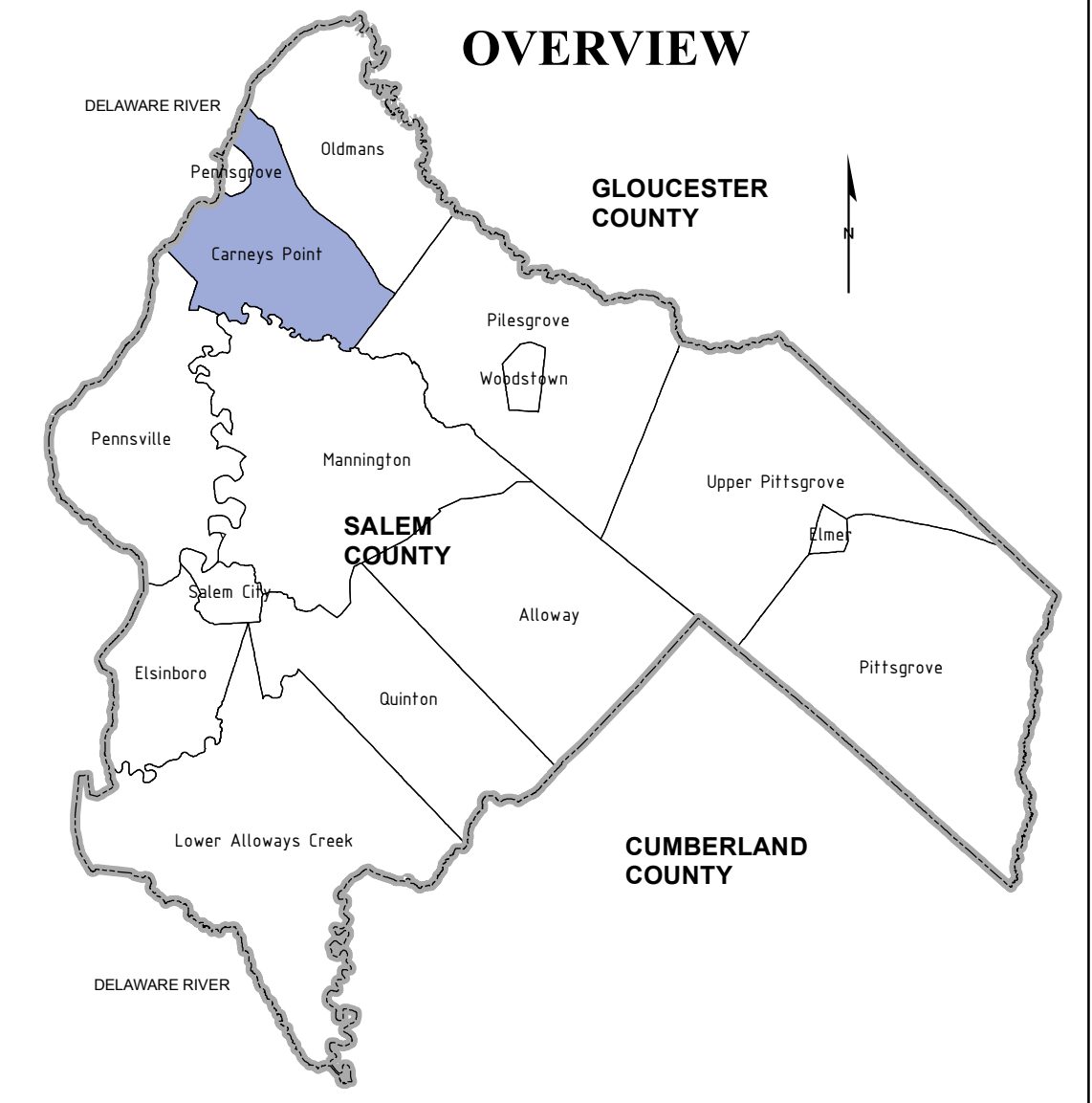
PENNSVILLE

OLDMANS

MANNINGTON

LEGEND

- WATER TREATMENT PLANT
- WELL LOCATIONS
- WATER TANKS
- PUMP STATIONS
- 4" WATERMAIN OR LESS
- 6" WATERMAIN
- 8" WATERMAIN
- 10" WATERMAIN
- 12" WATERMAIN
- 16" WATERMAIN
- 24" WATERMAIN
- 42" WATERMAIN
- HUC-11



NOTES:

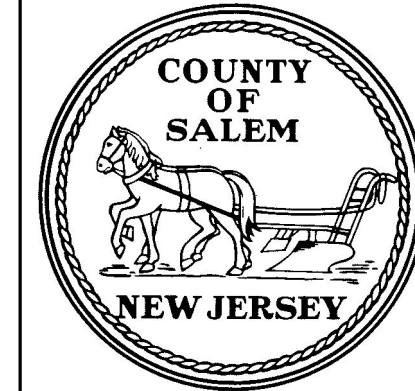
WATERMANS, TOWERS, WELLS AND TREATMENT FACILITIES TAKEN FROM SHAPE FILES SUPPLIED BY NEW JERSEY AMERICAN WATER.

BASEMAP INFORMATION INCLUDING PARCELS, ROADS AND MUNICIPAL BOUNDARY TAKEN FROM THE SALEM COUNTY DATABASE FILE.

"THIS (MAP/PUBLICATION/REPORT) WAS DEVELOPED USING NEW JERSEY DEPARTMENT OF ENVIRONMENTAL PROTECTION GEOGRAPHIC INFORMATION SYSTEM DIGITAL DATA, BUT THIS SECONDARY PRODUCT HAS NOT BEEN VERIFIED BY NJDEP AND IS NOT STATE-AUTHORIZED."

NO.	DATE	REVISION	BY:

WASTEWATER MANAGEMENT PLAN
PLANNING AREA & WATER SUPPLY - MAP 1
TOWNSHIP OF CARNEY'S POINT
 SALEM COUNTY
WASTEWATER MANAGEMENT PLAN
 SALEM COUNTY, NEW JERSEY

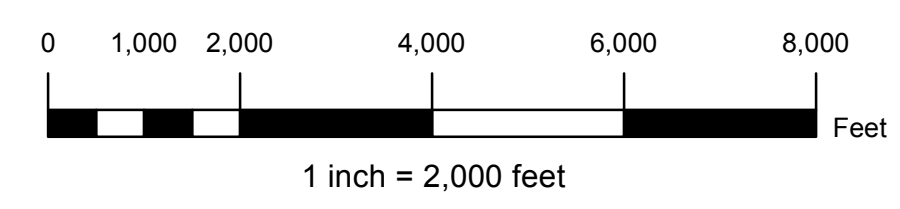


SALEM COUNTY DEPARTMENT OF PLANNING AND AGRICULTURE
 110 FIFTH STREET
 SALEM, NEW JERSEY

SICKELS & ASSOCIATES INC.

SHERWOOD MEWS
 833 KINGS HIGHWAY
 WOODBURY, NEW JERSEY 08096-3110
 NJ CERTIFICATE OF AUTHORIZATION
 No. GA27994903 856-848-6800
 FAX 848-8520

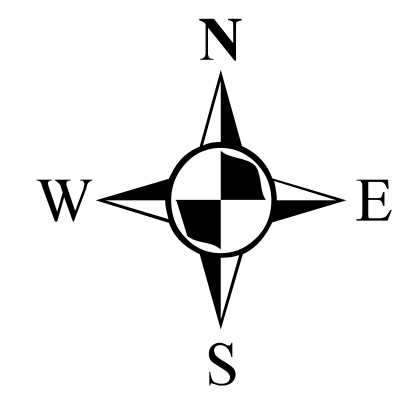
PILES GROVE



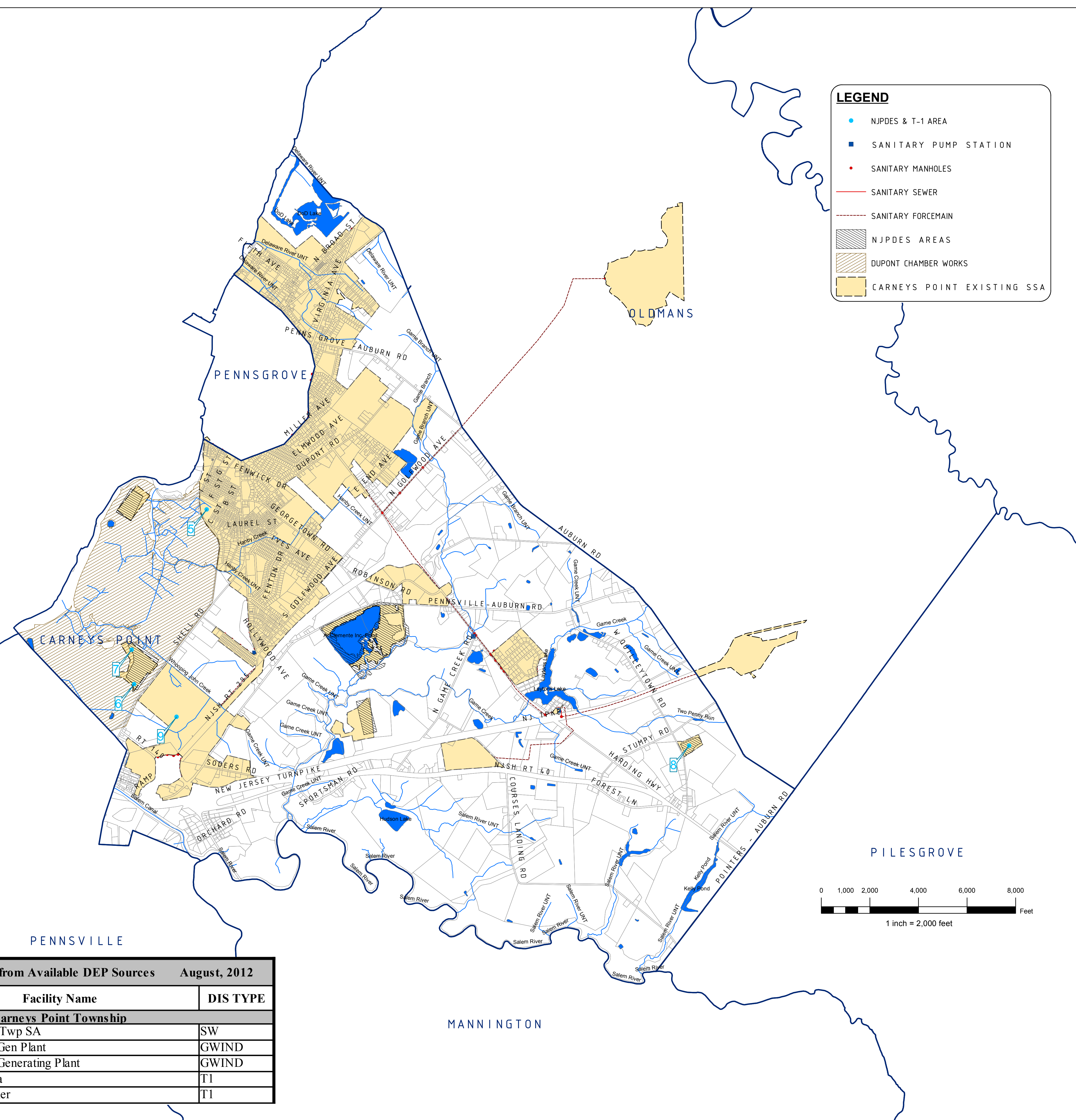
02040206020

02040206030

02040206040

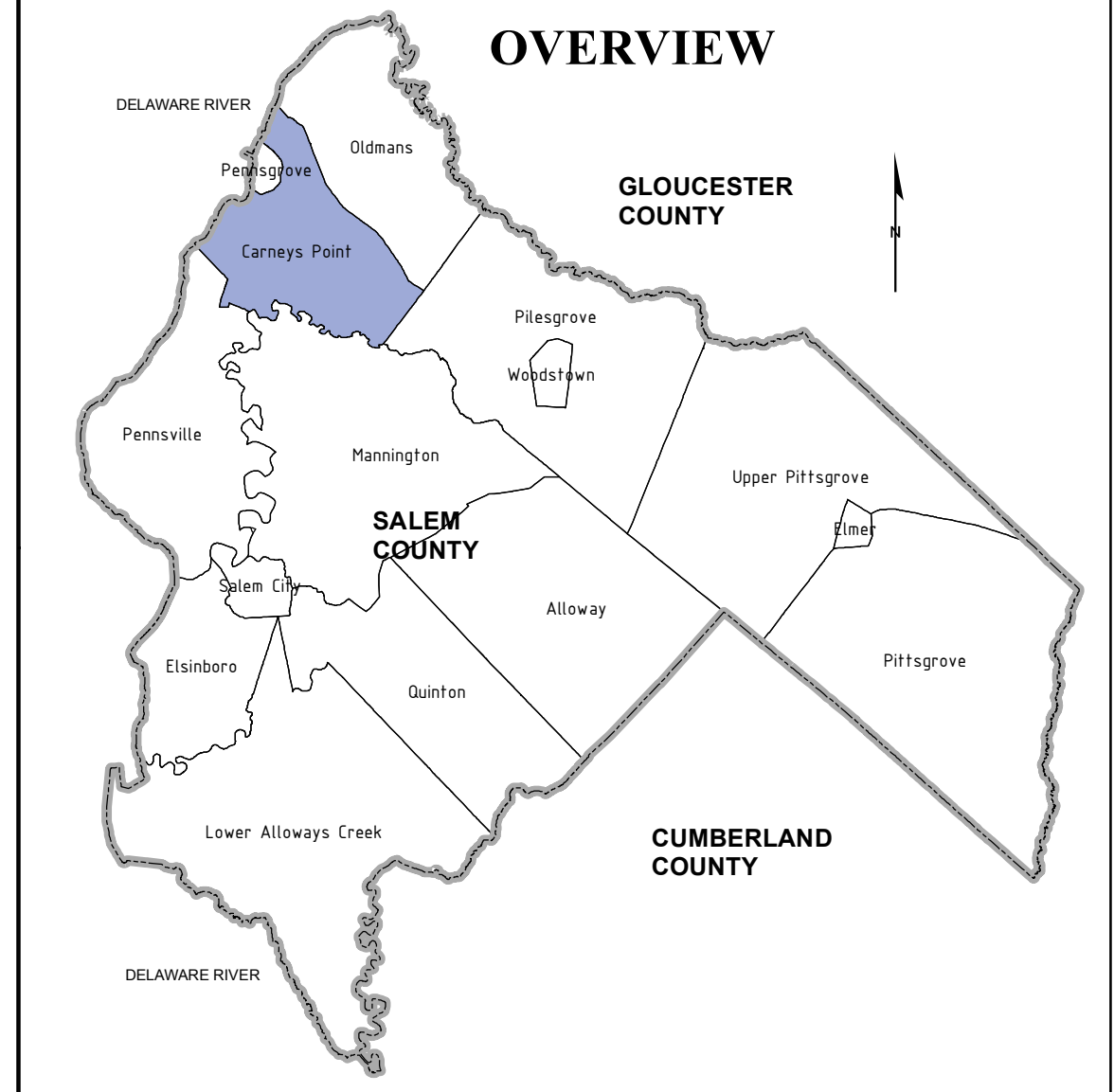


DELAWARE RIVER



LEGEND

- NJPDES & T-1 AREA
- SANITARY PUMP STATION
- SANITARY MANHOLES
- SANITARY SEWER
- - - SANITARY FORCEMAIN
- NJPDES AREAS
- DUPONT CHAMBER WORKS
- CARNEYS POINT EXISTING SSA



NOTES:

"LOCATIONS OF FUTURE PUMP STATIONS, MAJOR INTERCEPTORS AND TRUNK SEWERS ARE BEING PROVIDED FOR GENERAL INFORMATION ONLY AND WILL NOT SERVE AS THE BASIS FOR ANY FUTURE CONSISTENCY DETERMINATIONS OR PERMIT REVIEWS UNLESS THE PUMP STATION, MAJOR INTERCEPTOR OR TRUNK SEWER IS PART OF A STATE OR FEDERALLY FUNDED PROJECT."

"ALL EXISTING, NEW, OR EXPANDED INDUSTRIAL PRETREATMENT FACILITIES REQUIRING SIGNIFICANT INDIRECT USER (SUI) PERMITS AND/OR TREATMENT WORKS APPROVALS, AND WHICH ARE LOCATED WITHIN THE SPECIFIED SEWER SERVICE AREA, IS DEEMED TO BE CONSISTENT."

SANITARY SEWER INFORMATION INCLUDING MANHOLES, PIPING, PUMPSTATIONS AND TREATMENT PLANT TAKEN FROM A DRAWING FILE SUPPLIED BY THE CARNEYS POINT TOWNSHIP SEWER AUTHORITY.

BASEMAP INFORMATION INCLUDING PARCELS, ROADS AND MUNICIPAL BOUNDARY TAKEN FROM THE SALEM COUNTY DATABASE FILE.

"THIS (MAP/PUBLICATION/REPORT) WAS DEVELOPED USING NEW JERSEY DEPARTMENT OF ENVIRONMENTAL PROTECTION GEOGRAPHIC INFORMATION SYSTEM DIGITAL DATA, BUT THIS SECONDARY PRODUCT HAS NOT BEEN VERIFIED BY NJDEP AND IS NOT STATE-AUTHORIZED."

NO.	DATE	REVISION	BY:
1.	12-18-13	REV NJPDES-T1 AREAS & TABLE PER NJDEP COMMENTS	D.J.P.

EXISTING FACILITIES AND SERVICE AREA - MAP 2

TOWNSHIP OF CARNEYS POINT
 SALEM COUNTY
 WASTEWATER MANAGEMENT PLAN
 SALEM COUNTY, NEW JERSEY

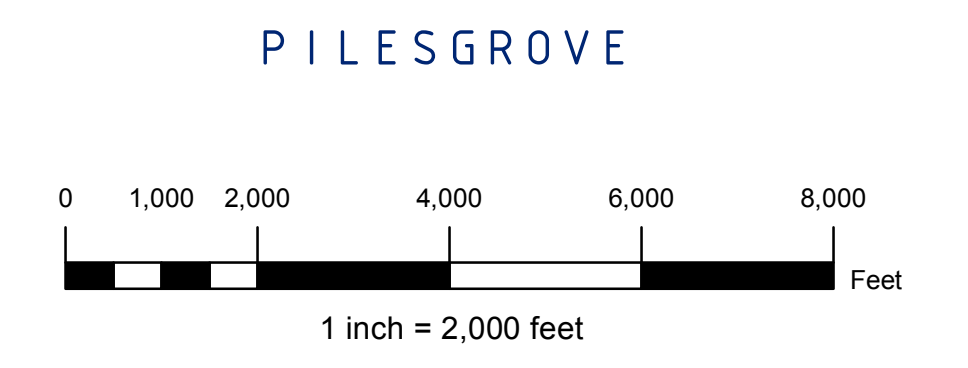


SICKELS & ASSOCIATES, INC.

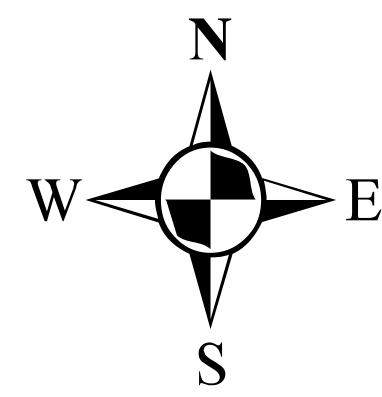
SHERWOOD MEWS
 833 KINGS HIGHWAY
 WOODBURY, NEW JERSEY 08096-3110
 NJ CERTIFICATE OF AUTHORIZATION
 No. GA219949601 856-848-6800
 FAX 848-8520

DRAWN BY: D.J.P. DATE: 2-16-11 SHEET: 1 of 1
 CHECKED BY: DSP DWG: F-SALEM WMP FILE: 5363

New Table #	Summary of information from Available DEP Sources August, 2012		DIS TYPE
	NJPDES	Facility Name	
Carneys Point Township			
5	NJ0021601	Carneys Point Twp SA	SW
6	NJ0073750	Carneys Point Gen Plant	GWIND
7	NJ0128996	Carneys Point Generating Plant	GWIND
8	NJG0100641	Westwood Villa	T1
9	NJG0165565	Deepwater Diner	T1

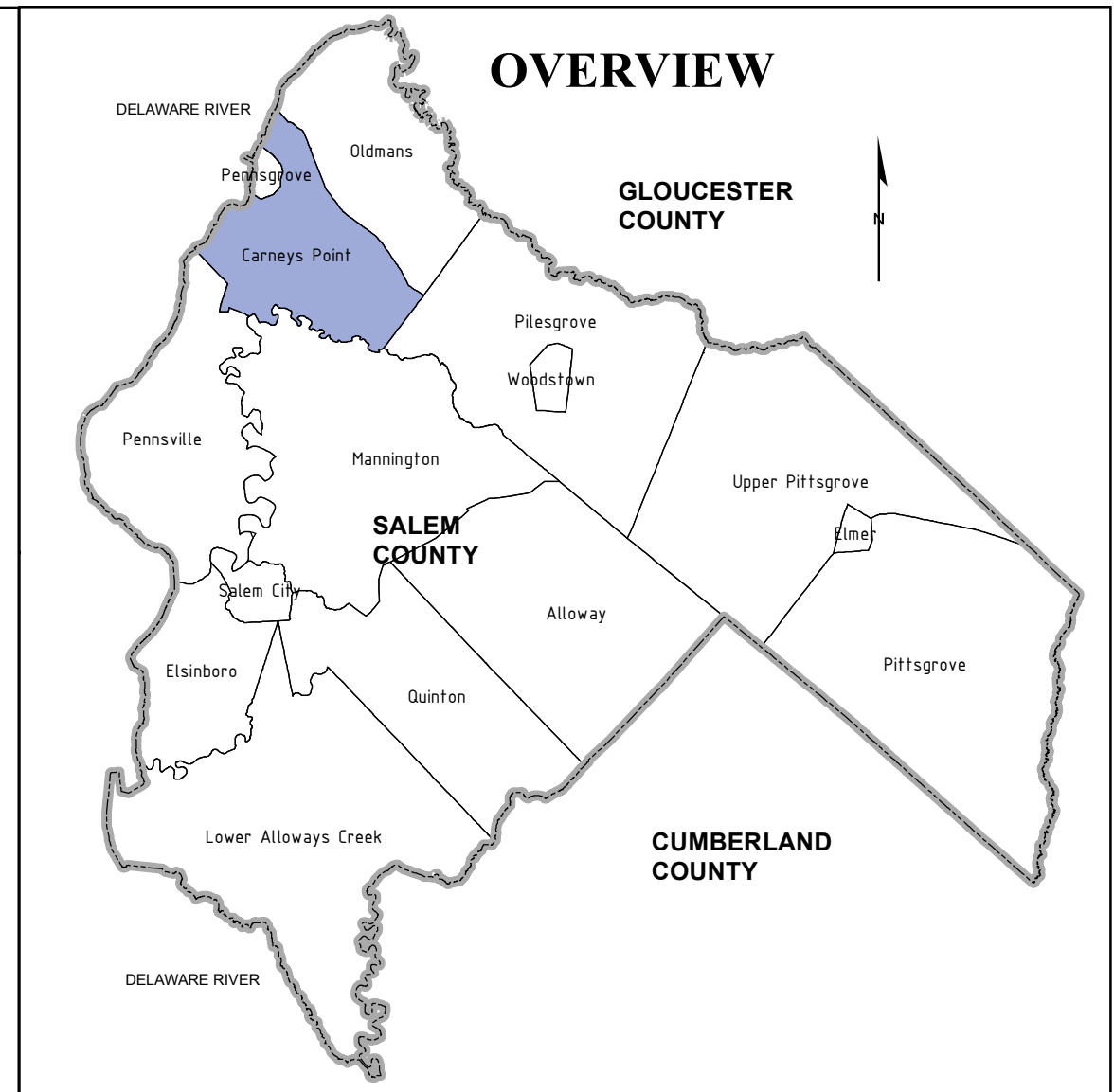


MANNINGTON



LEGEND

- SANITARY PUMP STATION
- SANITARY MANHOLES
- NJPDES & T-1 AREA
- SANITARY SEWER
- - - SANITARY FORCEMAIN
- ▨ DUPONT CHAMBER WORKS
- FUTURE SEWER SERVICE AREA
- EXISTING PENNSVILLE SSA



NOTES:

"PLEASE NOTE THAT WHERE THE VISUAL DEPICTION OF SSA DOES NOT EXPLICITLY INDICATE THE SPECIFIC SEWER SERVICE AREA ASSOCIATED WITH THE WASTEWATER TREATMENT FACILITIES, THE STATEWIDE DIGITIZED SEWER SERVICE AREA MAPPING DOES. THE PUBLICLY AVAILABLE SEWER SERVICE AREA MAPPING IS AVAILABLE FOR VIEWING ON NJ GEO-WEB AT [HTTP://WWW.NJ.GOV/DEP/GIS/GEOWEB/SPASH.HTM](http://www.nj.gov/dep/gis/geoweb/splash.htm). IT IS ALSO AVAILABLE FOR DOWNLOAD TO USE IN ARCGIS AT [HTTP://WWW.NJ.GOV/DEP/GIS/STATESHP.HTML](http://www.nj.gov/dep/gis/stateshp.html)."

"THE SEWER SERVICE AREA IDENTIFIED ON THIS MAP HAS BEEN REVIEWED BY THE MUNICIPALITY, COUNTY AND DEP. THIS AREA HAS BEEN DEFINED BASED ON ENVIRONMENTAL CONSTRAINTS 'LANDSCAPE PROJECT AREA GIS LAYERS', AVAILABLE FROM THE DEPARTMENT TO CLARIFY AREAS OF POTENTIAL SEWER SERVICE. THE TREATMENT FACILITY FOR THE SEWER SERVICE AREA DOES NOT GUARANTEE THAT SUFFICIENT WASTEWATER TREATMENT CAPACITY WILL BE AVAILABLE FOR THE COMPLETE BUILD OUT OF THE AREA."

"LOCATIONS OF FUTURE PUMP STATIONS, MAJOR INTERCEPTORS, AND TRUNK SEWERS ARE BEING PROVIDED FOR GENERAL INFORMATION ONLY AND WILL NOT SERVE AS THE BASIS FOR ANY FUTURE CONSISTENCY DETERMINATIONS OR PERMIT REVIEWS UNLESS THE PUMP STATION, MAJOR INTERCEPTOR OR TRUNK SEWER IS PART OF A STATE OR FEDERALLY FUNDED PROJECT."

"INDIVIDUAL SUBSURFACE SEWAGE DISPOSAL SYSTEMS (ISSDS) FOR INDIVIDUAL RESIDENCES CAN ONLY BE CONSTRUCTED IN DEPICTED SEWER SERVICE AREAS IF LEGALLY ENFORCEABLE GUARANTEES ARE PROVIDED, BEFORE SUCH CONSTRUCTION, THAT USE OF SUCH SYSTEMS WILL BE DISCONTINUED WHEN THE DEPICTED SEWER SERVICE BECOMES AVAILABLE. THIS APPLIES TO ISSDS THAT REQUIRE CERTIFICATION FROM THE DEPARTMENT UNDER THE REALTY IMPROVEMENT GRANT CONDITIONS AND REQUIREMENTS (FROM FEDERAL AND STATE GRANTS OR LOANS FOR SEWERAGE FACILITIES) WHICH PROVIDE FOR RESTRICTION OF SEWER SERVICE TO ENVIRONMENTALLY SENSITIVE AREAS, ARE UNAFFECTED BY ADOPTION OF THIS WMP AND COMPLIANCE IS REQUIRED. PLEASE SEE MUNICIPAL WMP CHAPTERS FOR THE EXISTENCE OF ANY APPLICABLE ENVIRONMENTALLY SENSITIVE AREAS IN WHICH FEDERAL 201 GRANT LIMITATIONS PROHIBIT THE EXTENSION OF SEWER SERVICE."

"ALL EXISTING, NEW, OR EXPANDED INDUSTRIAL PRE-TREATMENT FACILITIES REQUIRING SIGNIFICANT INDIRECT USER (SUI) PERMITS AND/OR TREATMENT WORKS APPROVALS, AND WHICH ARE LOCATED WITHIN THE SPECIFIED SEWER SERVICE AREA, IS DEEMED TO BE CONSISTENT."

IN ADDITION TO THE TEXT FOUND IN THE WMP TEMPLATE DOCUMENT THE FOLLOWING IS NEEDED: "PROPOSED DEVELOPMENTS TYING INTO EXISTING AND PROPOSED SEWER SERVICE AREAS WHICH REQUIRE COASTAL PERMITS MUST DEMONSTRATE COMPLIANCE WITH ALL APPLICABLE SECTIONS OF THE COASTAL ZONE MANAGEMENT RULES INCLUDING, BUT NOT LIMITED TO, WETLANDS (N.J.A.C. 7:7E-3.27), WETLANDS BUFFERS (N.J.A.C. 7:7E-3.38), SECONDARY IMPACTS (N.J.A.C. 7:7E-6.3), PUBLIC FACILITY USE POLICIES (N.J.A.C. 7:7E-7.6), WATER QUALITY (N.J.A.C. 7:7E-8.4), GROUND WATER USE (N.J.A.C. 7:7E-8.8) AND THE POLICIES UNDER GENERAL LAND AREAS RULES, SUBCHAPTERS 5, 5A AND 5B"

SANITARY SEWER INFORMATION INCLUDING MANHOLES, PIPING, PUMPSTATIONS AND TREATMENT PLANT TAKEN FROM A DRAWING FILE SUPPLIED BY THE CARNEYS POINT TOWNSHIP SEWER AUTHORITY.

BASEMAP INFORMATION INCLUDING PARCELS, ROADS AND MUNICIPAL BOUNDARY TAKEN FROM THE SALEM COUNTY DATABASE FILE.

"THIS (MAP/PUBLICATION/REPORT) WAS DEVELOPED USING NEW JERSEY DEPARTMENT OF ENVIRONMENTAL PROTECTION GEOGRAPHIC INFORMATION SYSTEM DIGITAL DATA, BUT THIS SECONDARY PRODUCT HAS NOT BEEN VERIFIED BY NJDEP AND IS NOT STATE-AUTHORIZED."

NO.	DATE	REVISION	BY:
3.	9-2-15	ADDED NOTE PER NJDEP COMMENTS	DJP
2.	7-15-14	REV PER NJDEP COMMENTS	DJP
1.	12-18-13	REV NJPDES-T1 AREAS & TABLE PER NJDEP COMMENTS	DJP

REVISIONS

FUTURE SEWER SERVICE AREA - MAP 3

TOWNSHIP OF CARNEYS POINT
SALEM COUNTY
WASTEWATER MANAGEMENT PLAN
SALEM COUNTY, NEW JERSEY

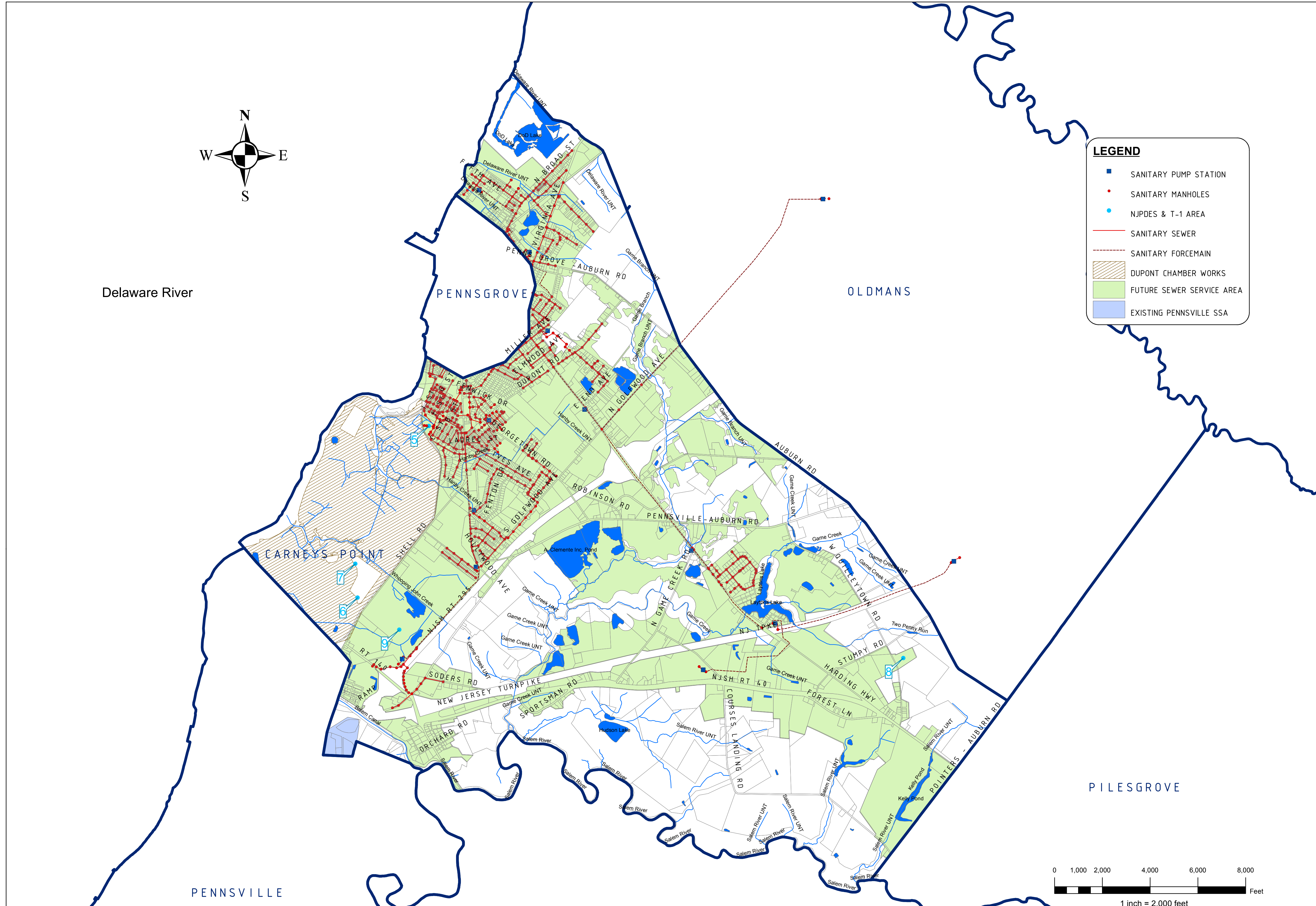
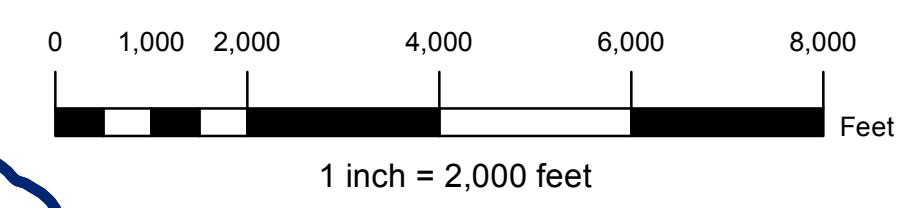


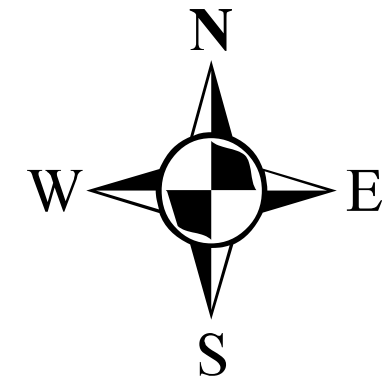
SICKELS & ASSOCIATES, INC.

SHERWOOD MEWS
833 KINGS HIGHWAY
WOODBURY, NEW JERSEY 08096-3110
NJ CERTIFICATE OF AUTHORIZATION
No. GA27994960
856-848-6800
FAX 848-8520

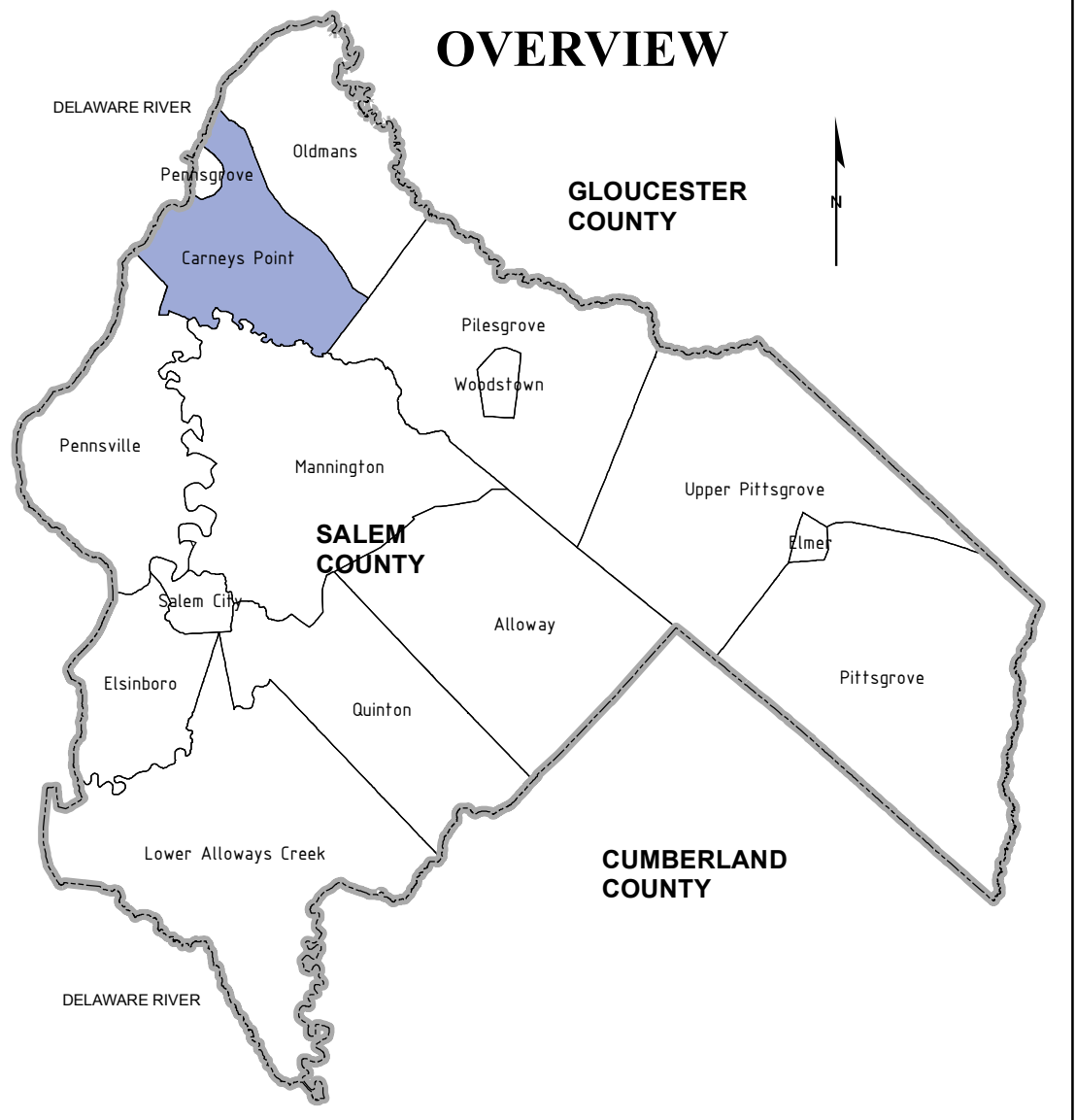
DRAWN BY: DJP DATE: 2-14-12 SHEET: 1 of 1
CHECKED BY: DSP DWG: F-SALEM WMP FILE: 5363

New Table #	Summary of information from Available DEP Sources		August, 2012
	NJPDES	Facility Name	
Carneys Point Township			
5	NJ0021601	Carney's Point Twp SA	SW
6	NJ0073750	Carneys Point Gen Plant	GWIND
7	NJ0128996	Carneys Point Generating Plant	GWIND
8	NJG0100641	Westwood Villa	T1
9	NJG0165565	Deepwater Diner	T1

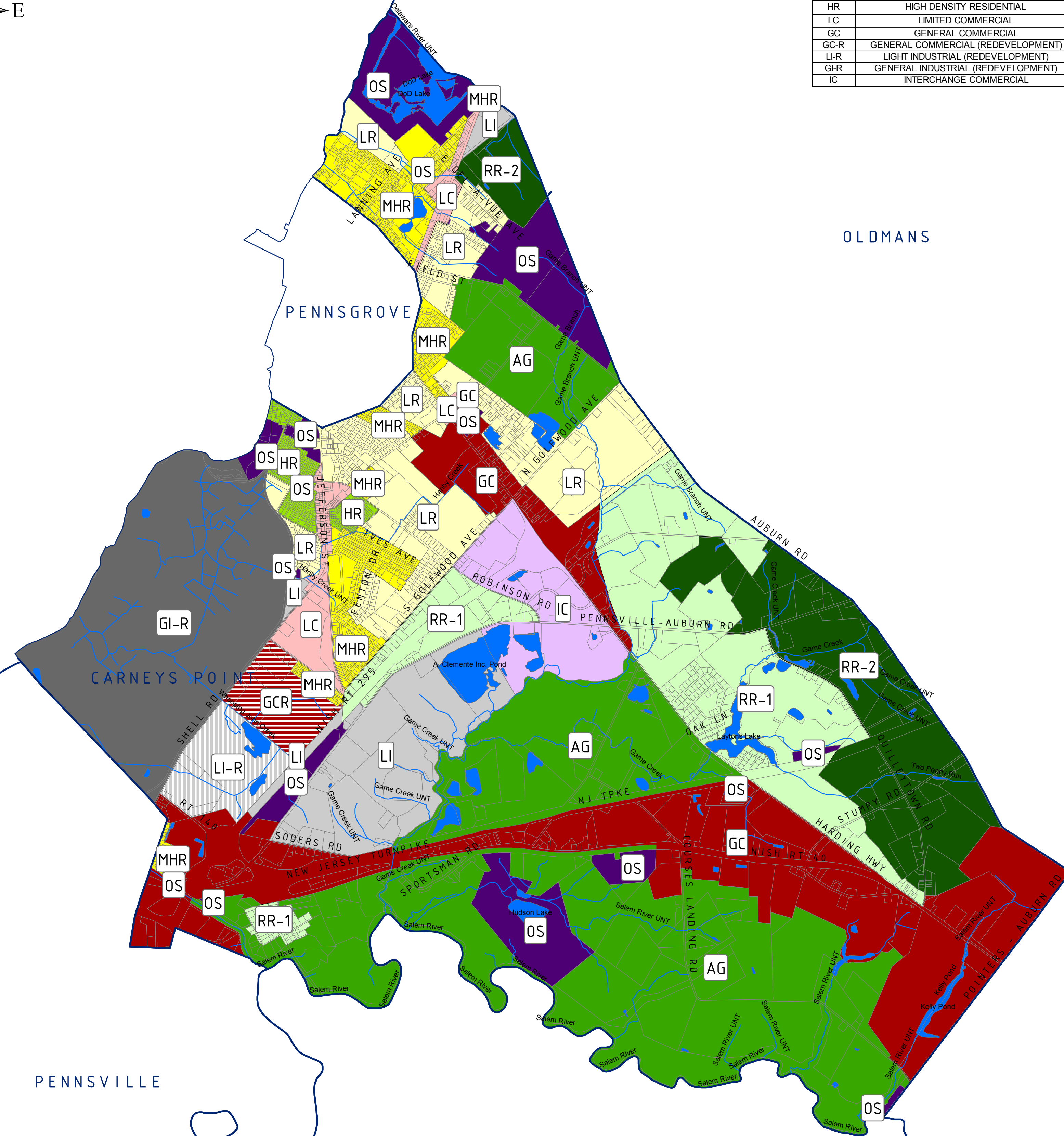




ZONING SUMMARY TABLE									
ZONE	ZONE TITLE	MINIMUM LOT AREA	MINIMUM LOT WIDTH	MINIMUM LOT DEPTH	MINIMUM FRONT YARD SETBACK MIN/AGG	MINIMUM SIDE YARD SETBACK MIN/AGG	MINIMUM REAR YARD SETBACK	MAXIMUM BUILDING HEIGHT	MAXIMUM LOT COVERAGE
RR-1	RURAL RESIDENTIAL 1	22,000SF	125'	150'	30/40'	15/10'	30/10	35/15	20%
RR-2	RURAL RESIDENTIAL 2	2 ACRE	150'	200'	40'	25'	50	35/15	20%
Ag	AGRICULTURE	1 ACRE	100'	125'	30/40	15/10	30/10	35/15	15%
LR	LOW DENSITY RESIDENTIAL	15,000SF	100'	125'	30/40	15/10	30/10	35/15	25%
MHR	MEDIUM HIGH DENSITY RESIDENTIAL	7,000SF	60'	90'	30/30	10/5	25/5	35/15	25%
HR	HIGH DENSITY RESIDENTIAL	5,000SF	50'	70'	30/30	10/5	25/5	35/15	30%
LC	LIMITED COMMERCIAL	5,000SF	50'	70'	30/30	10/5	25/5	35/15	30%
GC	GENERAL COMMERCIAL	15,000SF	100'	125'	40/40	30/30	40/40	40/40	30%
GC-R	GENERAL COMMERCIAL (REDEVELOPMENT)	15,000SF	100'	125'	40/40	30/30	40/40	40/40	30%
LI-R	LIGHT INDUSTRIAL (REDEVELOPMENT)	5 ACRES	300	400	60/60	30/30	40/40	50/50	30%
GI-R	GENERAL INDUSTRIAL (REDEVELOPMENT)	10 ACRES	500'	500'	75/75	30/30	40/40	50/50	40%
IC	INTERCHANGE COMMERCIAL	50,000SF	200'	200'	50'	20'	35'	45'	40%



Dealawre River

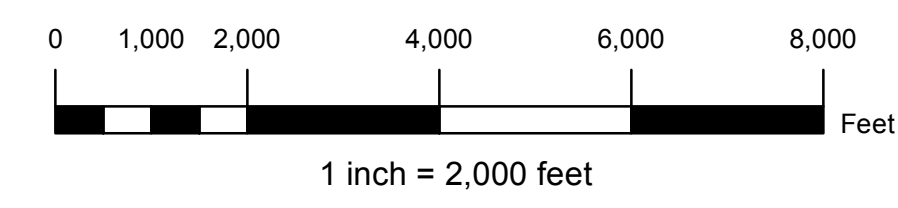


OLDMANS

LEGEND

- AG-AGRICULTURE
- GC-GENERAL COMMERCIAL
- GC-R-GENERAL COMMERCIAL (REDEVELOPMENT)
- GI-R-GENERAL INDUSTRIAL (REDEVELOPMENT)
- HR-HIGH DENSITY RESIDENTIAL
- IC-INTERCHANGE COMMERCIAL
- LC-LIMITED COMMERCIAL
- LI-LIGHT INDUSTRIAL
- LI-R-LIGHT INDUSTRIAL (REDEVELOPMENT)
- LR-LOW DENSITY RESIDENTIAL
- MHR-MEDIUM HIGH DENSITY RESIDENTIAL
- OS-
- RR-1-RURAL RESIDENTIAL 1
- RR-2-RURAL RESIDENTIAL 2

PILES GROVE



PENNSVILLE

MANNINGTON

NOTES:

ZONING MAP TAKEN FROM SALEM COUNTY DATABASE FILE DATED 12-8-10. ZONING MAP DATED 3-1-06. ORDINANCE INFORMATION TAKEN FROM THE TOWNSHIP OF CARNEY'S POINT ORDINANCE DATED 9-15-09.

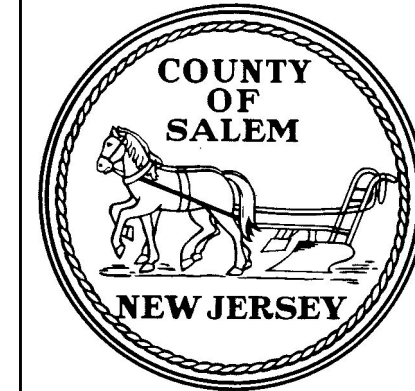
BASEMAP INFORMATION INCLUDING PARCELS, ROADS AND MUNICIPAL BOUNDARY TAKEN FROM THE SALEM COUNTY DATABASE FILE.

"THIS (MAP/PUBLICATION/REPORT) WAS DEVELOPED USING NEW JERSEY DEPARTMENT OF ENVIRONMENTAL PROTECTION GEOGRAPHIC INFORMATION SYSTEM DIGITAL DATA, BUT THIS SECONDARY PRODUCT HAS NOT BEEN VERIFIED BY NJDEP AND IS NOT STATE-AUTHORIZED."

NO.	DATE	REVISION	BY:

ZONING - MAP 4

TOWNSHIP OF CARNEY'S POINT
 SALEM COUNTY
 WASTEWATER MANAGEMENT PLAN
 SALEM COUNTY, NEW JERSEY

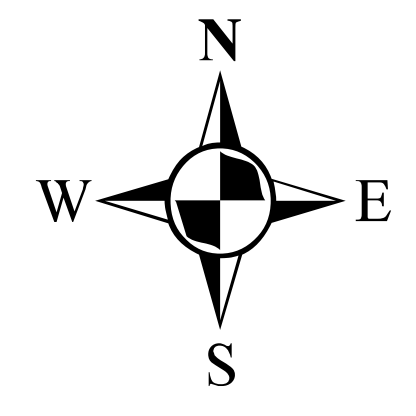


SALEM COUNTY DEPARTMENT OF PLANNING AND AGRICULTURE
 110 FIFTH STREET
 SALEM, NEW JERSEY

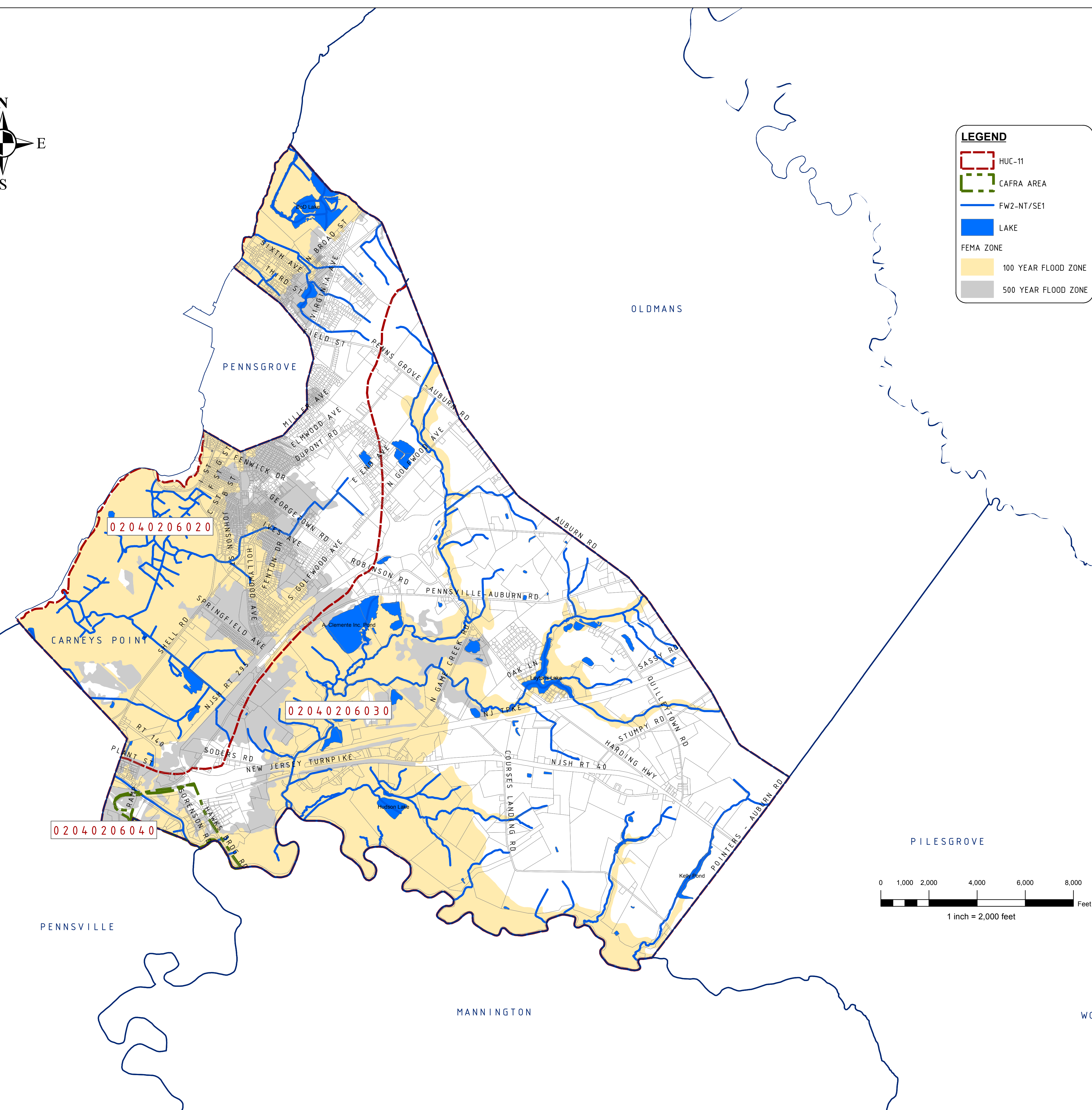
SICKELS & ASSOCIATES INC.

SHERWOOD MEWS
 833 KINGS HIGHWAY
 WOODBURY, NEW JERSEY 08096-3110
 NJ CERTIFICATE OF AUTHORIZATION
 No. GA21994903
 856-848-6800
 FAX 848-8520

DRAWN BY: DJP	DATE: 2-16-11	SHEET: 1 of 1
CHECKED BY: DSP	DWG: F-SALEM WMP	FILE: 5363



Delaware River

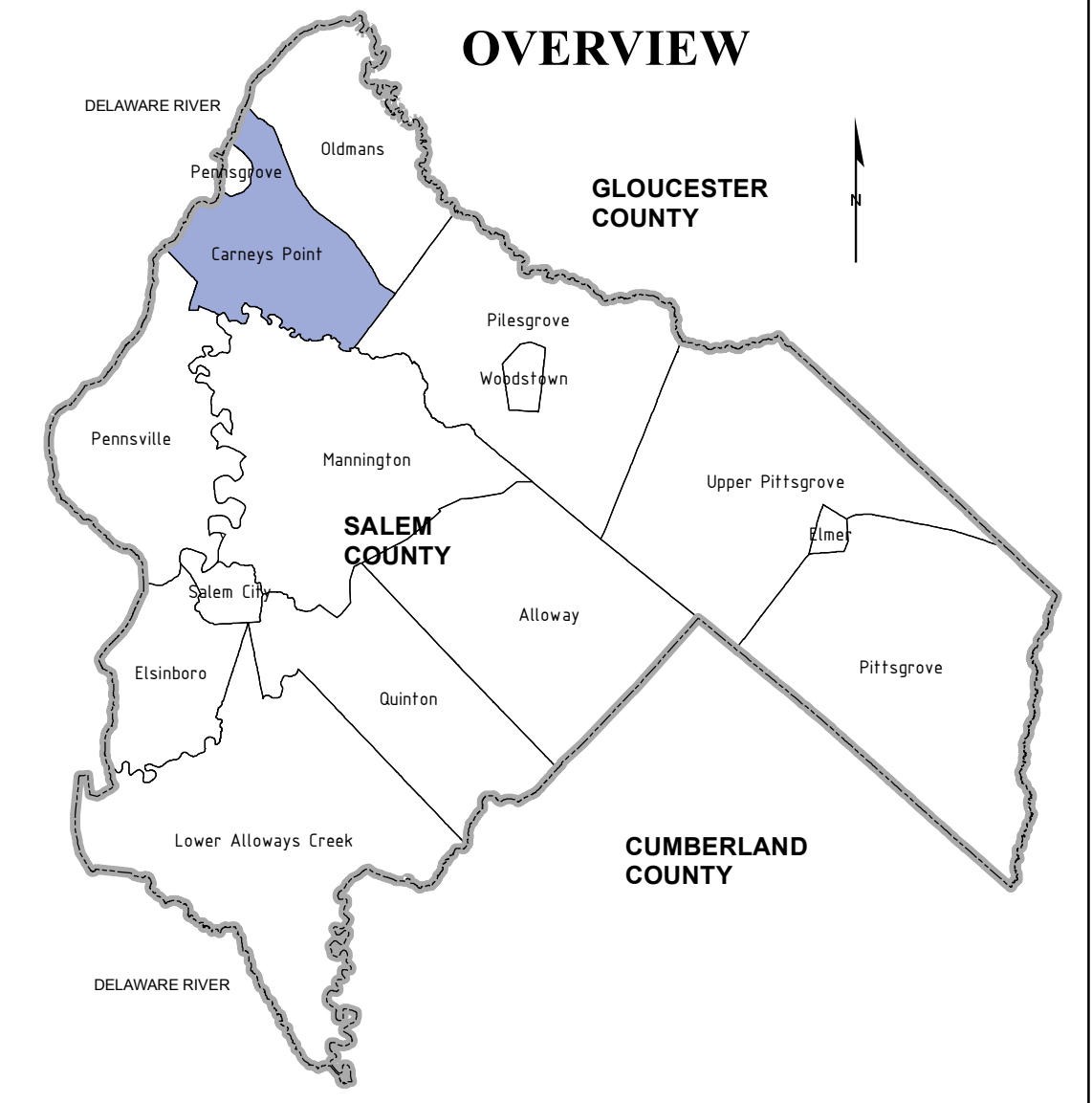
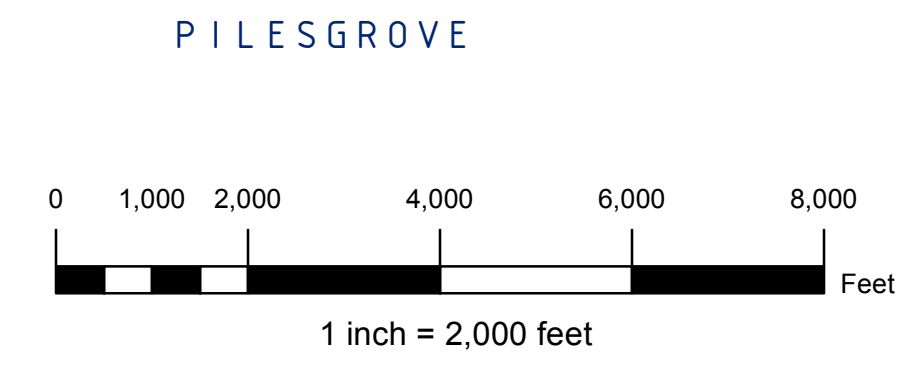


LEGEND

- HUC-11
- CAFRA AREA
- FW2-NT/SE1
- LAKE

FEMA ZONE

- 100 YEAR FLOOD ZONE
- 500 YEAR FLOOD ZONE



NOTES:

"DEVELOPMENT IN AREAS MAPPED AS WETLANDS, FLOOD PRONE AREAS, SUITABLE HABITAT FOR ENDANGERED AND THREATENED SPECIES AS IDENTIFIED ON THE DEPARTMENT'S LANDSCAPE MAPS OF HABITAT FOR ENDANGERED, THREATENED AND OTHER PRIORITY WILDLIFE AS RANK 3.4 AND 5, NATURAL HERITAGE PRIORITY SITES, RIPARIAN ZONES, STEEP SLOPES, OR DESIGNATED RIVER AREAS MAY BE SUBJECT TO SPECIAL REGULATION UNDER FEDERAL OR STATE STATUTES OR RULES, AND THAT INTERESTED PERSONS SHOULD CHECK WITH THE DEPARTMENT FOR THE LATEST INFORMATION. DEPICTION OF ENVIRONMENTAL FEATURES SHALL BE FOR GENERAL INFORMATION PURPOSES ONLY, AND SHALL NOT BE CONSTRUED TO DEFINE THE LEGAL GEOGRAPHIC JURISDICTION OF SUCH STATUTES OR RULES"

BASEMAP INFORMATION INCLUDING PARCELS, ROADS AND MUNICIPAL BOUNDARY TAKEN FROM THE SALEM COUNTY DATABASE FILE.

"THIS (MAP/PUBLICATION/REPORT) WAS DEVELOPED USING NEW JERSEY DEPARTMENT OF ENVIRONMENTAL PROTECTION GEOGRAPHIC INFORMATION SYSTEM DIGITAL DATA, BUT THIS SECONDARY PRODUCT HAS NOT BEEN VERIFIED BY NJDEP AND IS NOT STATE-AUTHORIZED."

NO.	DATE	REVISION	BY:

ENVIRONMENTAL FEATURES - MAP 5A - CATEGORY ONE STREAMS, CAFRA, FEMA, HUC-11 AREAS

TOWNSHIP OF CARNEY'S POINT

SALEM COUNTY
WASTEWATER MANAGEMENT PLAN
SALEM COUNTY, NEW JERSEY

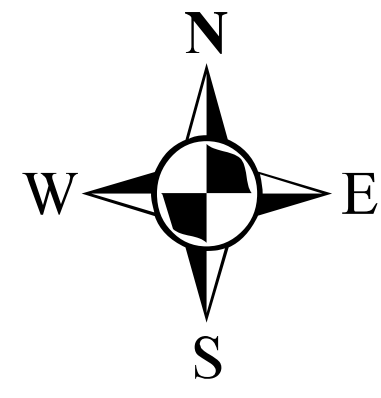
SALEM COUNTY DEPARTMENT OF PLANNING AND AGRICULTURE

110 FIFTH STREET
SALEM, NEW JERSEY

SICKELS & ASSOCIATES, INC.

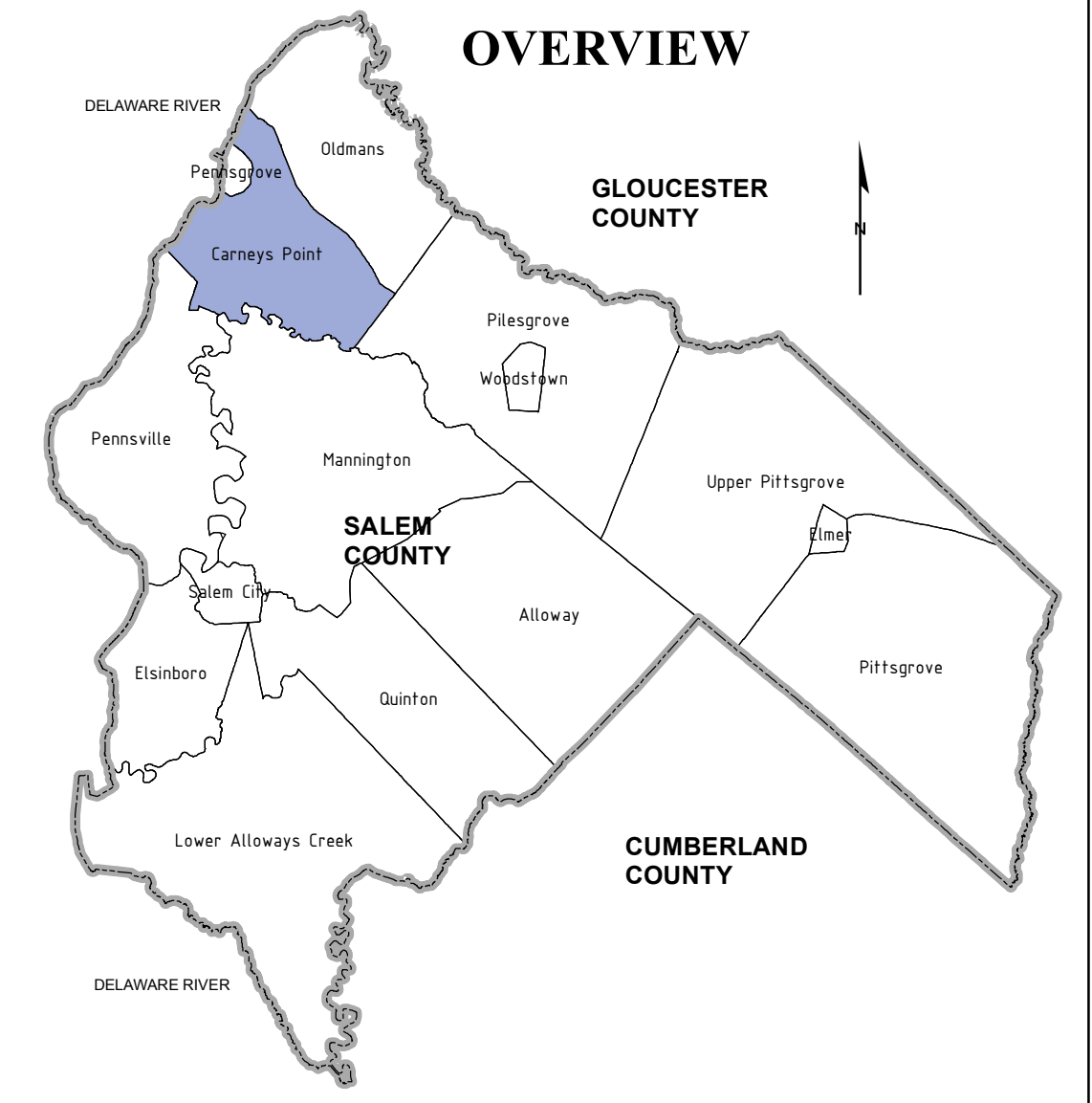
SHERWOOD MEWS
833 KINGS HIGHWAY
WOODBURY, NEW JERSEY 08096-3110
NJ CERTIFICATE OF AUTHORIZATION
No. GA27949600
856-848-6800
FAX 848-8520

DRAWN BY: DJP DATE: 2-16-11 SHEET: 1 of 1
CHECKED BY: DSP DWG: F-SALEM WMP FILE: 5363



LEGEND

- OPEN SPACE
- FOREST (RANK 3,4,5)
- EMERGENT (RANK 3,4,5)
- WETLANDS
- GRASSLANDS (RANK 3,4,5)



NOTES:

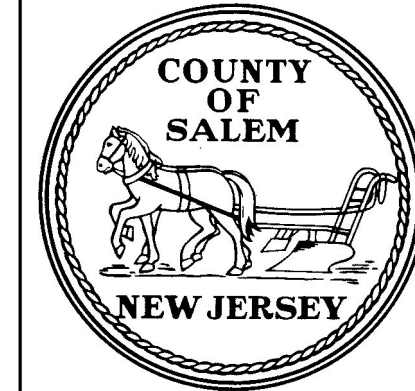
"DEVELOPMENT IN AREAS MAPPED AS WETLANDS, FLOOD PRONE AREAS, SUITABLE HABITAT FOR ENDANGERED AND THREATENED SPECIES AS IDENTIFIED ON THE DEPARTMENT'S LANDSCAPE MAPS OF HABITAT FOR ENDANGERED, THREATENED AND OTHER PRIORITY WILDLIFE AS RANK 3,4, AND 5, NATURAL HERITAGE PRIORITY SITES, RIPARIAN ZONES, STEEP SLOPES, OR DESIGNATED RIVER AREAS MAY BE SUBJECT TO SPECIAL REGULATION UNDER FEDERAL OR STATE STATUTES OR RULES, AND THAT INTERESTED PERSONS SHOULD CHECK WITH THE DEPARTMENT FOR THE LATEST INFORMATION. DEPICTION OF ENVIRONMENTAL FEATURES SHALL BE FOR GENERAL INFORMATION PURPOSES ONLY, AND SHALL NOT BE CONSTRUED TO DEFINE THE LEGAL GEOGRAPHIC JURISDICTION OF SUCH STATUTES OR RULES"

BASEMAP INFORMATION INCLUDING PARCELS, ROADS AND MUNICIPAL BOUNDARY TAKEN FROM THE SALEM COUNTY DATABASE FILE.

"THIS (MAP/PUBLICATION/REPORT) WAS DEVELOPED USING NEW JERSEY DEPARTMENT OF ENVIRONMENTAL PROTECTION GEOGRAPHIC INFORMATION SYSTEM DIGITAL DATA, BUT THIS SECONDARY PRODUCT HAS NOT BEEN VERIFIED BY NJDEP AND IS NOT STATE-AUTHORIZED."

NO.	DATE	REVISION	BY:

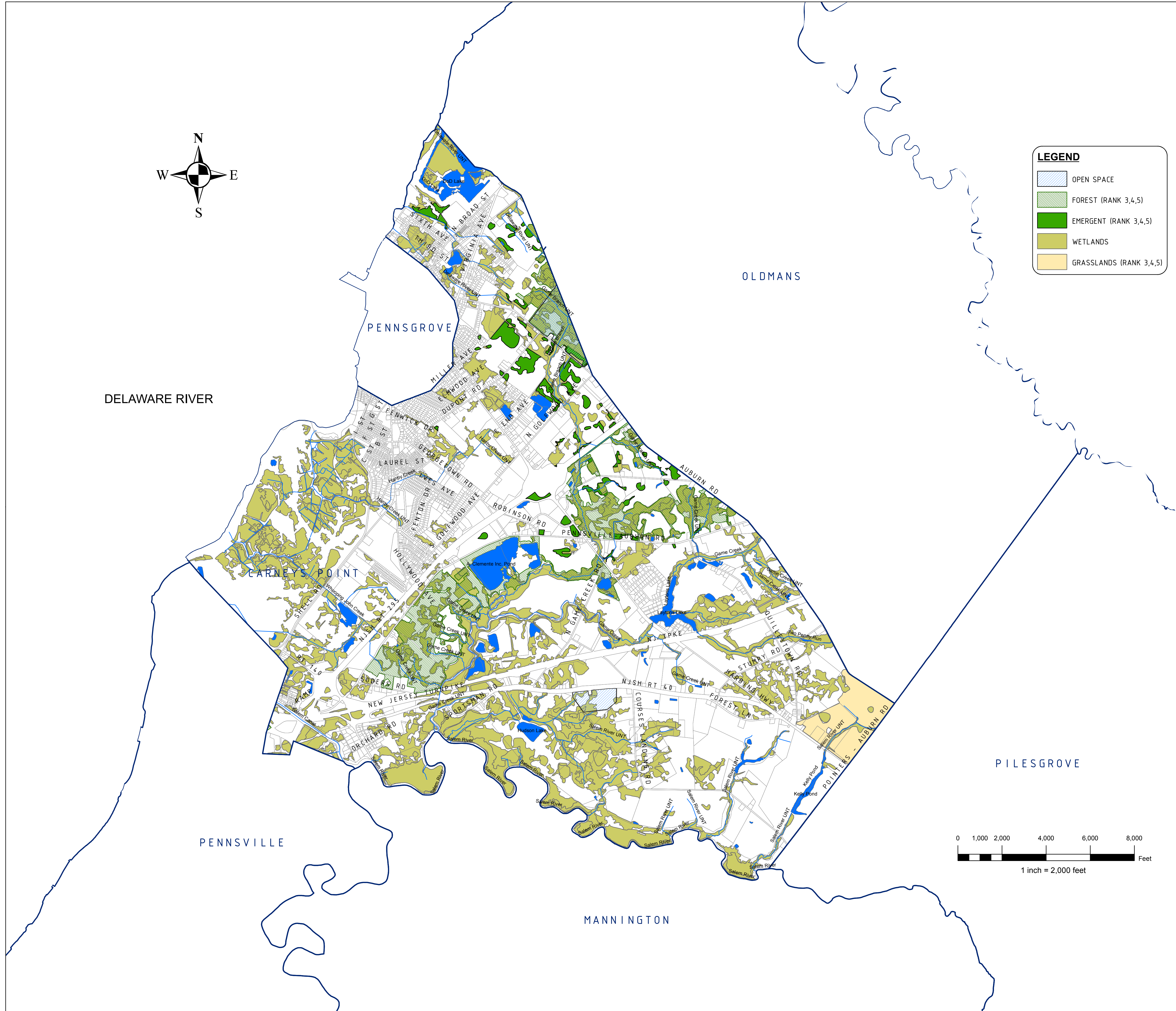
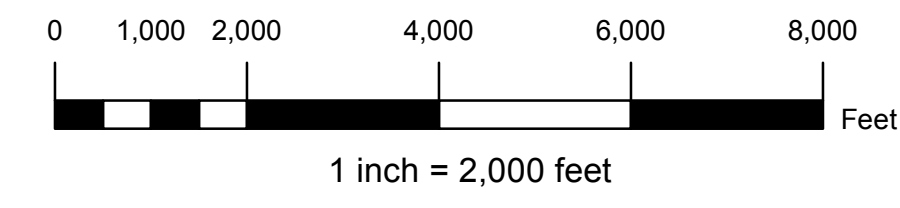
ENVIRONMENTAL FEATURES - MAP 5B
OPEN SPACE, FOREST, FORESTED WETLANDS,
EMERGENT, WETLANDS, GRASSLANDS AREAS
TOWNSHIP OF CARNEYS POINT
 SALEM COUNTY
WASTEWATER MANAGEMENT PLAN
 SALEM COUNTY, NEW JERSEY

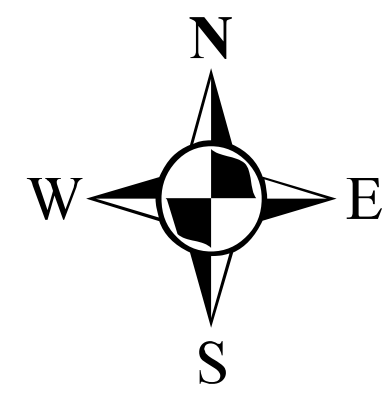


SALEM COUNTY DEPARTMENT OF PLANNING AND AGRICULTURE
 110 FIFTH STREET
 SALEM, NEW JERSEY

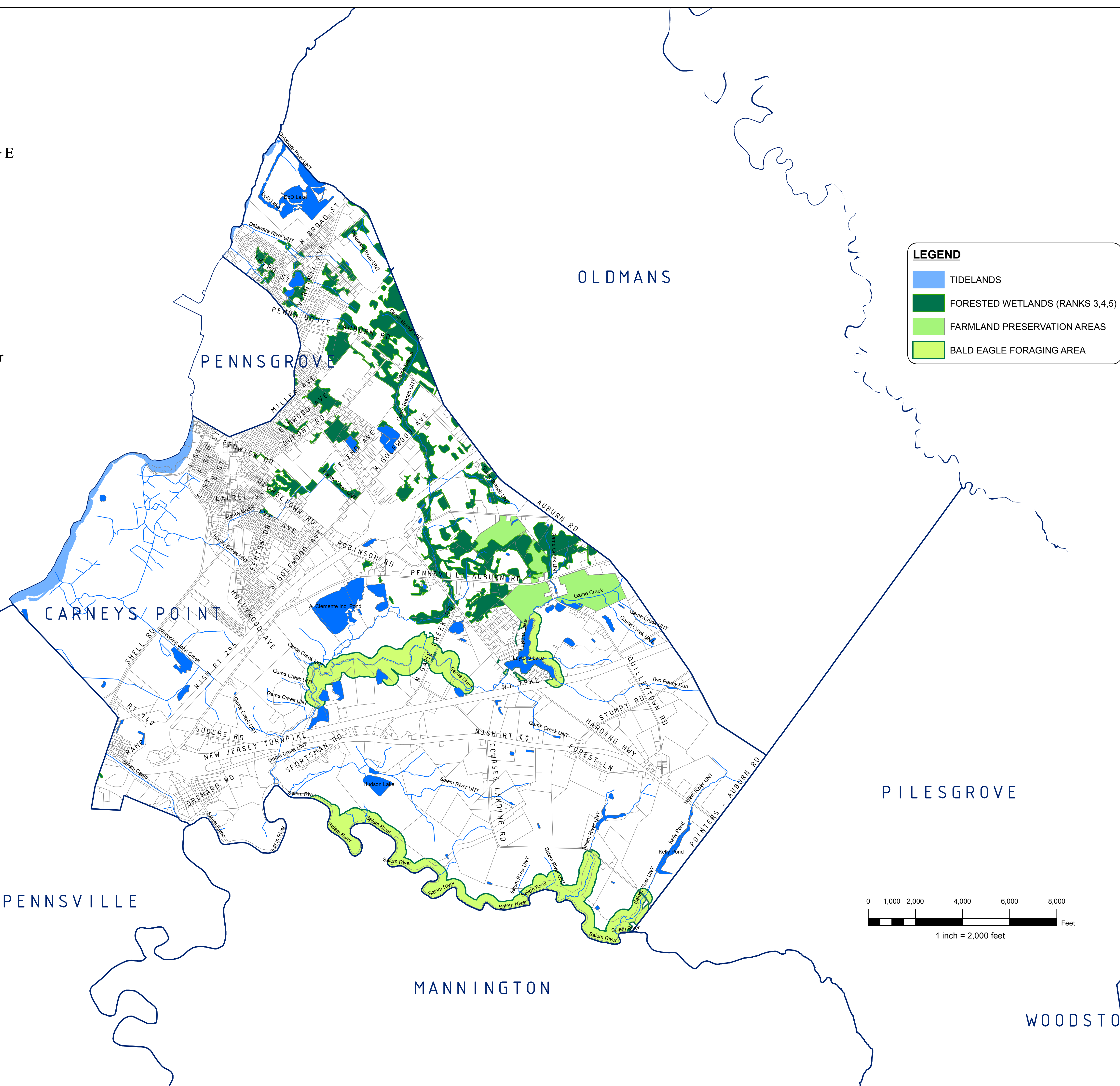
SICKELS & ASSOCIATES, INC.
 SHERWOOD MEWS
 833 KINGS HIGHWAY
 WOODBURY, NEW JERSEY 08096-3110
 NJ CERTIFICATE OF AUTHORIZATION
 No. GA27994900
 856-848-6800
 FAX 848-8520

DRAWN BY: DJP	DATE: 2-16-11	SHEET: 1 of 1
CHECKED BY: DSP	DWG: F-SALEM WMP	FILE: 5363



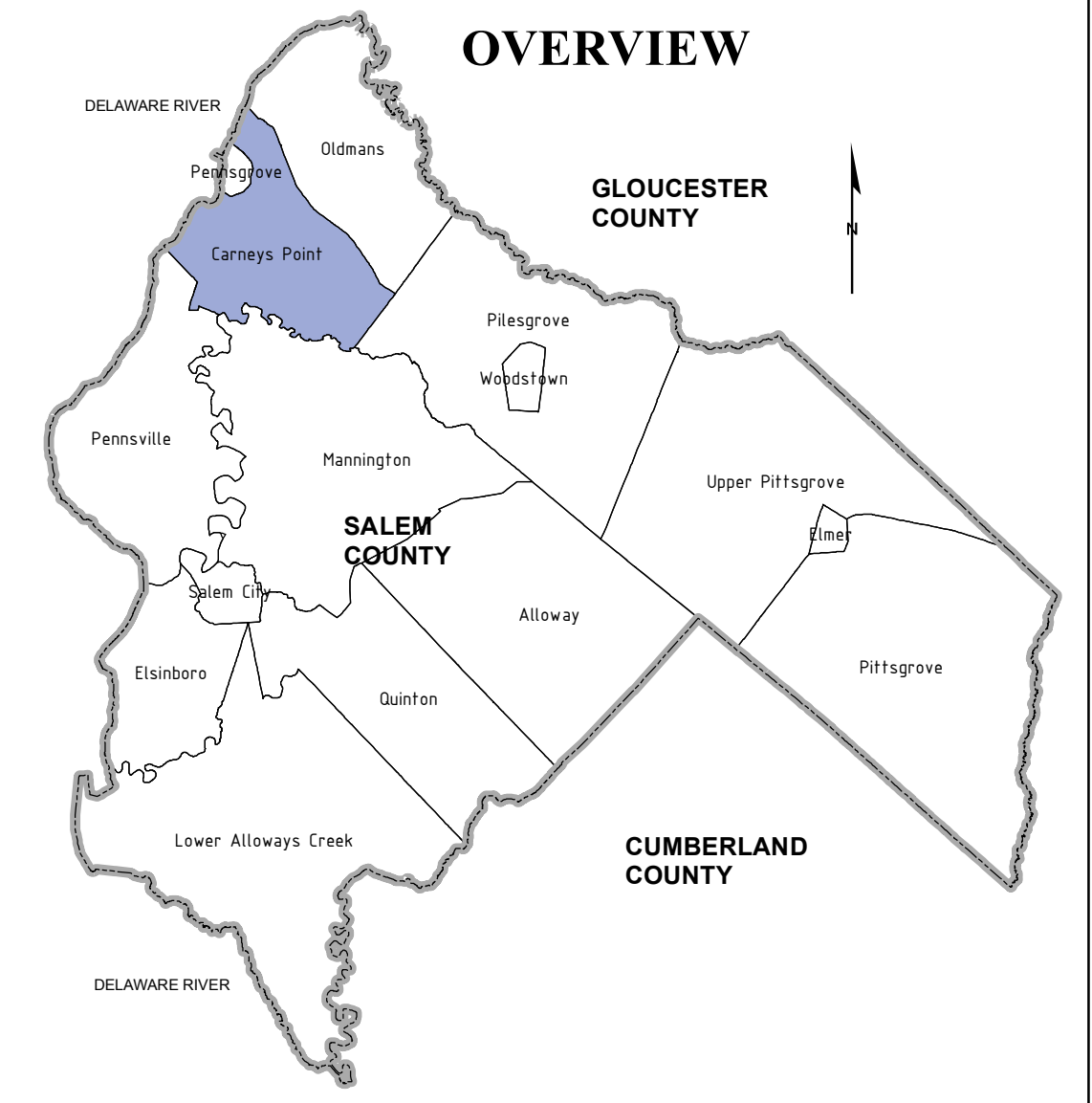
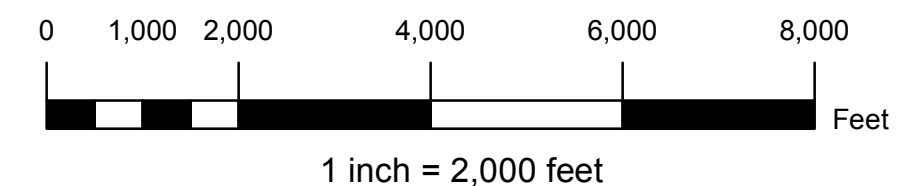


Delaware River



LEGEND

- TIDELANDS
- FORESTED WETLANDS (RANKS 3,4,5)
- FARMLAND PRESERVATION AREAS
- BALD EAGLE FORAGING AREA



NOTES:

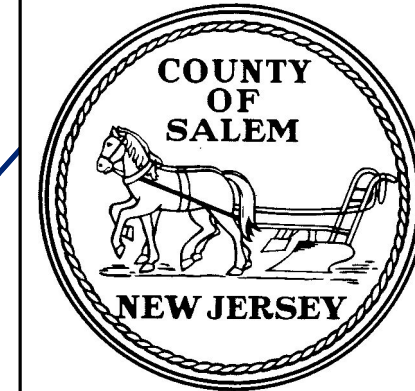
"DEVELOPMENT IN AREAS MAPPED AS WETLANDS, FLOOD PRONE AREAS, SUITABLE HABITAT FOR ENDANGERED AND THREATENED SPECIES AS IDENTIFIED ON THE DEPARTMENT'S LANDSCAPE MAPS OF HABITAT FOR ENDANGERED, THREATENED AND OTHER PRIORITY WILDLIFE AS RANK 3.4 AND 5, NATURAL HERITAGE PRIORITY SITES, RIPARIAN ZONES, STEEP SLOPES, OR DESIGNATED RIVER AREAS MAY BE SUBJECT TO SPECIAL REGULATION UNDER FEDERAL OR STATE STATUTES OR RULES, AND THAT INTERESTED PERSONS SHOULD CHECK WITH THE DEPARTMENT FOR THE LATEST INFORMATION. DEPICTION OF ENVIRONMENTAL FEATURES SHALL BE FOR GENERAL INFORMATION PURPOSES ONLY, AND SHALL NOT BE CONSTRUED TO DEFINE THE LEGAL GEOGRAPHIC JURISDICTION OF SUCH STATUTES OR RULES"

BASEMAP INFORMATION INCLUDING PARCELS, ROADS AND MUNICIPAL BOUNDARY TAKEN FROM THE SALEM COUNTY DATABASE FILE.

"THIS (MAP/PUBLICATION/REPORT) WAS DEVELOPED USING NEW JERSEY DEPARTMENT OF ENVIRONMENTAL PROTECTION GEOGRAPHIC INFORMATION SYSTEM DIGITAL DATA, BUT THIS SECONDARY PRODUCT HAS NOT BEEN VERIFIED BY NJDEP AND IS NOT STATE-AUTHORIZED."

NO.	DATE	REVISION	BY:

ENVIRONMENTAL FEATURES - MAP 5C - FORESTED WETLANDS, BALD EAGLE FORAGING, TIDELANDS, FARMLAND PRESERVATION AREAS
TOWNSHIP OF CARNEY'S POINT
 SALEM COUNTY
 WASTEWATER MANAGEMENT PLAN
 SALEM COUNTY, NEW JERSEY



SALEM COUNTY DEPARTMENT OF PLANNING AND AGRICULTURE
 110 FIFTH STREET
 SALEM, NEW JERSEY

SICKELS & ASSOCIATES, INC.

SHERWOOD MEWS
 833 KINGS HIGHWAY
 WOODBURY, NEW JERSEY 08096-3110
 NJ CERTIFICATE OF AUTHORIZATION
 No. GA27949600 856-848-6800
 FAX 848-8520

DRAWN BY: DJP DATE: 2-16-11 SHEET: 1 of 1
 CHECKED BY: DSP DWG: F-SALEM WMP FILE: 5363