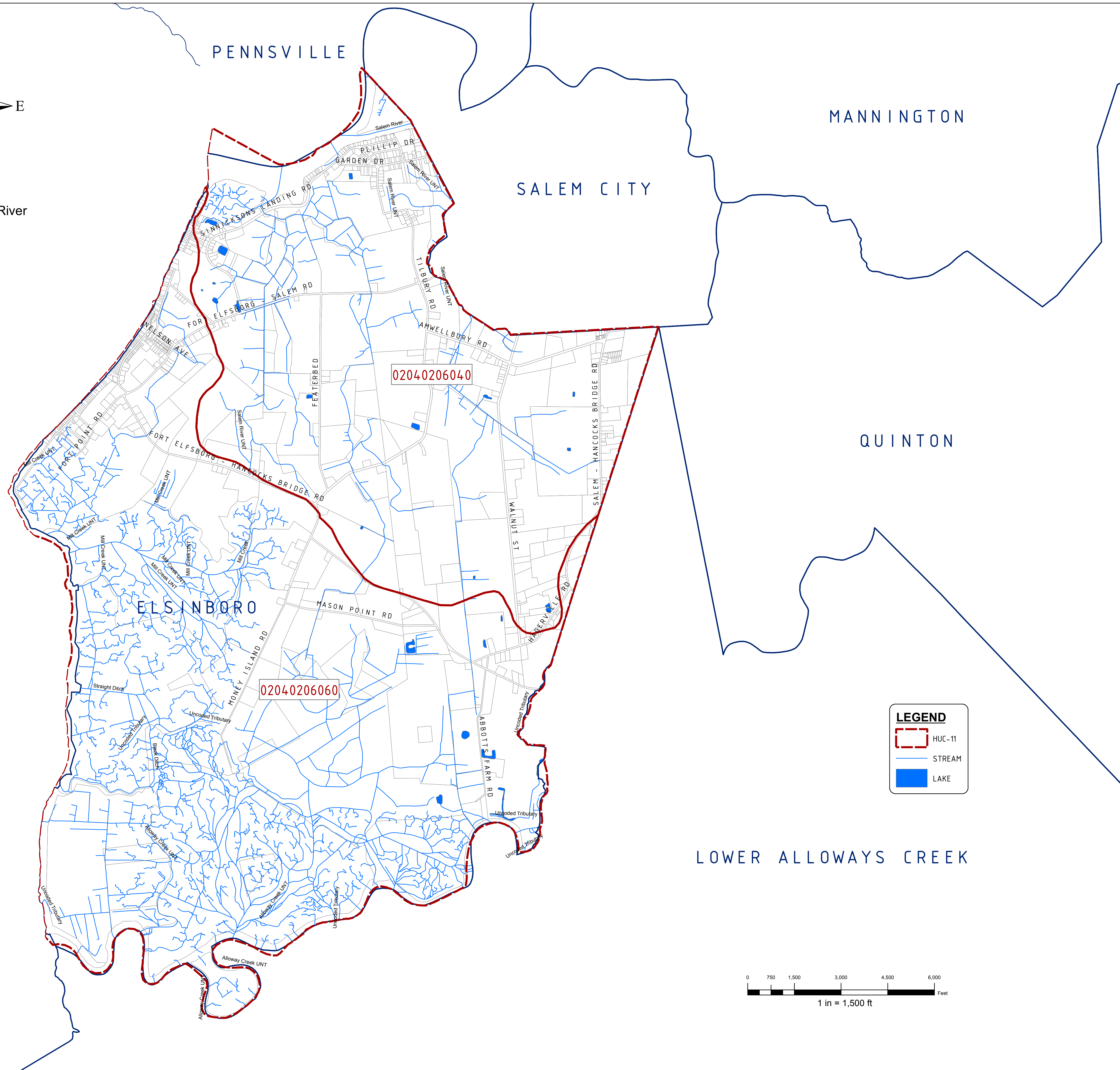


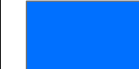


Delaware River

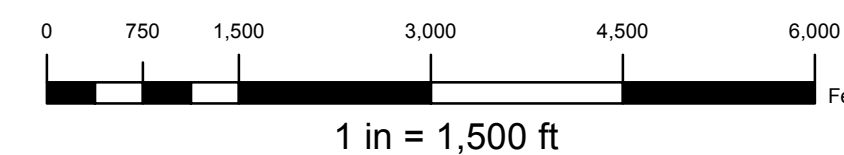
Delaware River



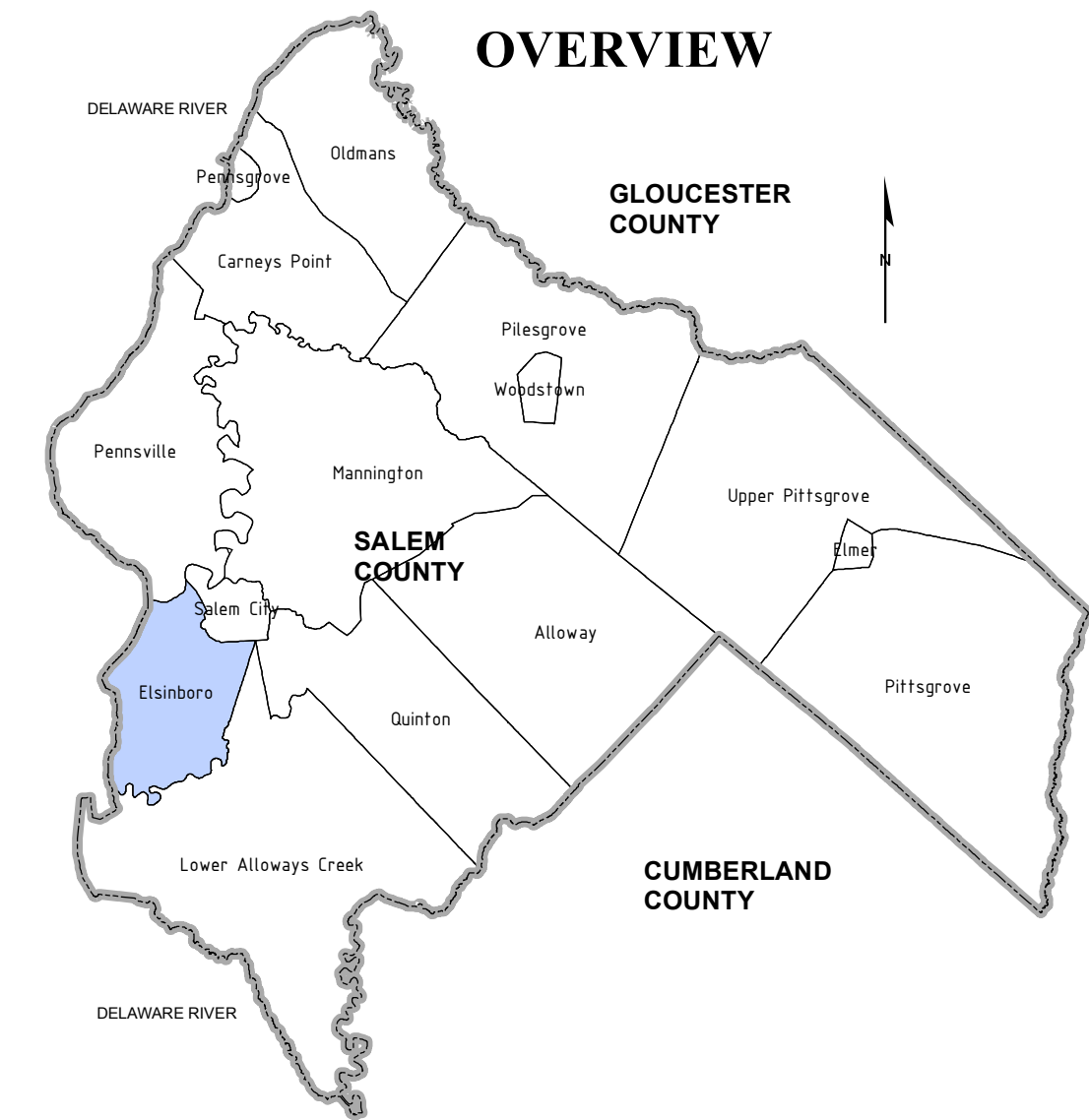
LEGEND

-  HUC-11
-  STREAM
-  LAKE

LOWER ALLOWAYS CREEK



OVERVIEW



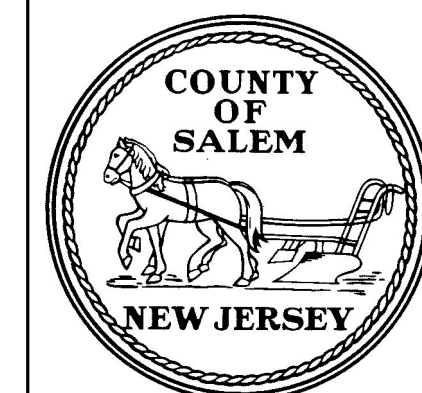
NOTES:

BASEMAP INFORMATION INCLUDING PARCELS, ROADS AND MUNICIPAL BOUNDARY TAKEN FROM THE SALEM COUNTY DATABASE FILE.

"THIS (MAP/PUBLICATION/REPORT) WAS DEVELOPED USING NEW JERSEY DEPARTMENT OF ENVIRONMENTAL PROTECTION GEOGRAPHIC INFORMATION SYSTEM DIGITAL DATA, BUT THIS SECONDARY PRODUCT HAS NOT BEEN VERIFIED BY NJDEP AND IS NOT STATE-AUTHORIZED."

NO.	DATE	REVISION	BY:

WASTEWATER MANAGEMENT PLAN
 PLANNING AREA - MAP 1
TOWNSHIP OF ELSINBORO
 SALEM COUNTY
 WASTEWATER MANAGEMENT PLAN
 SALEM COUNTY, NEW JERSEY

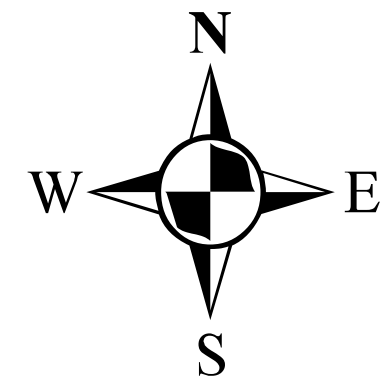


SALEM COUNTY DEPARTMENT OF
 PLANNING AND AGRICULTURE
 110 FIFTH STREET
 SALEM, NEW JERSEY

SICKELS &
ASSOCIATES, INC.

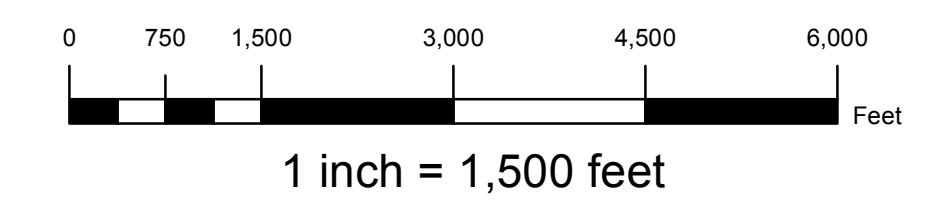
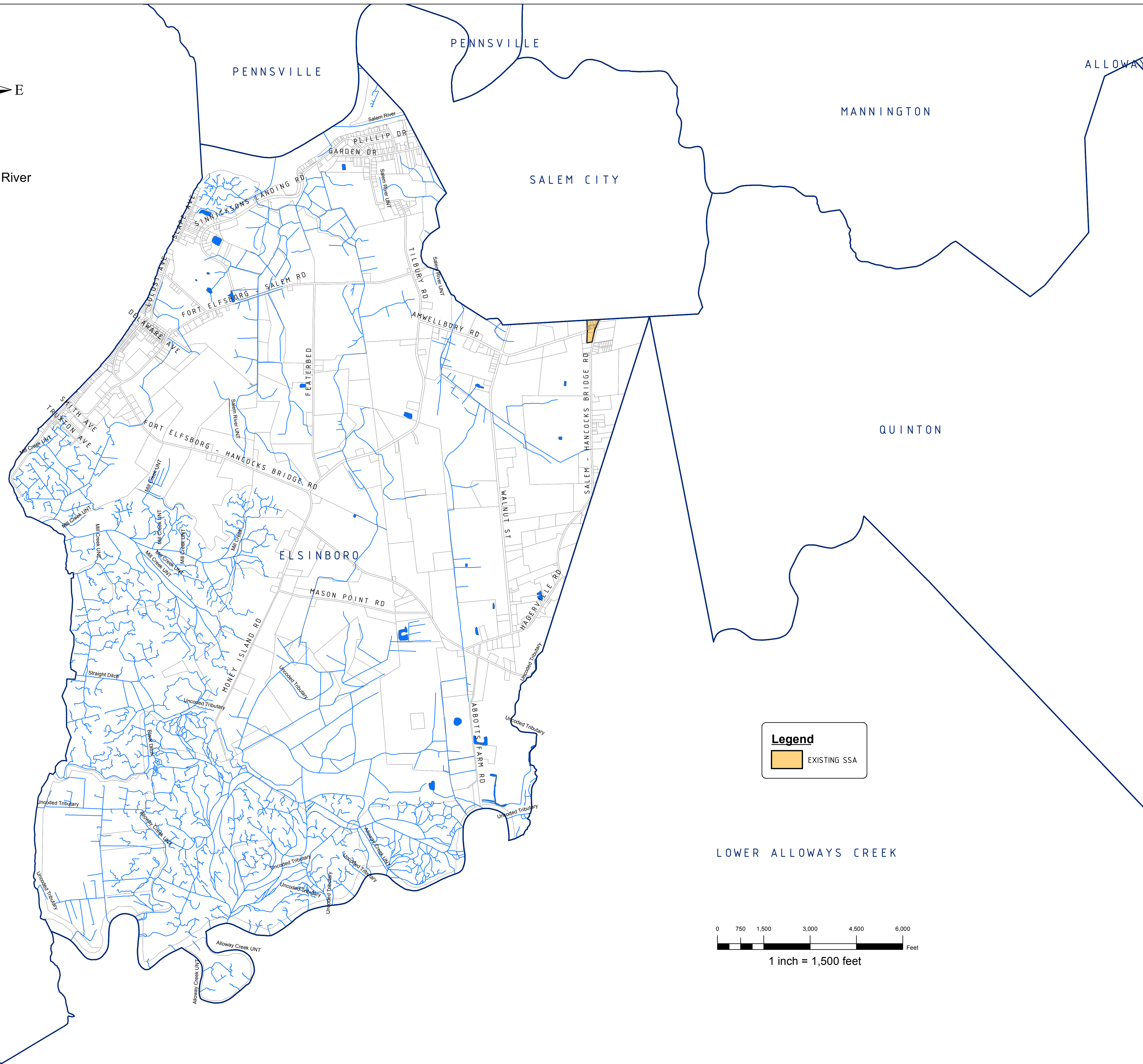
SHERWOOD MEWS
 833 KINGS HIGHWAY
 WOODBURY, NEW JERSEY 08096-3110
 NJ CERTIFICATE OF AUTHORIZATION
 No. GA27994903
 856-848-6800
 FAX 848-8520

DRAWN BY: DJP	DATE: 2-16-11	SHEET: 1 of 1
CHECKED BY: DSP	DWG: F-SALEM WMP	FILE: 5363

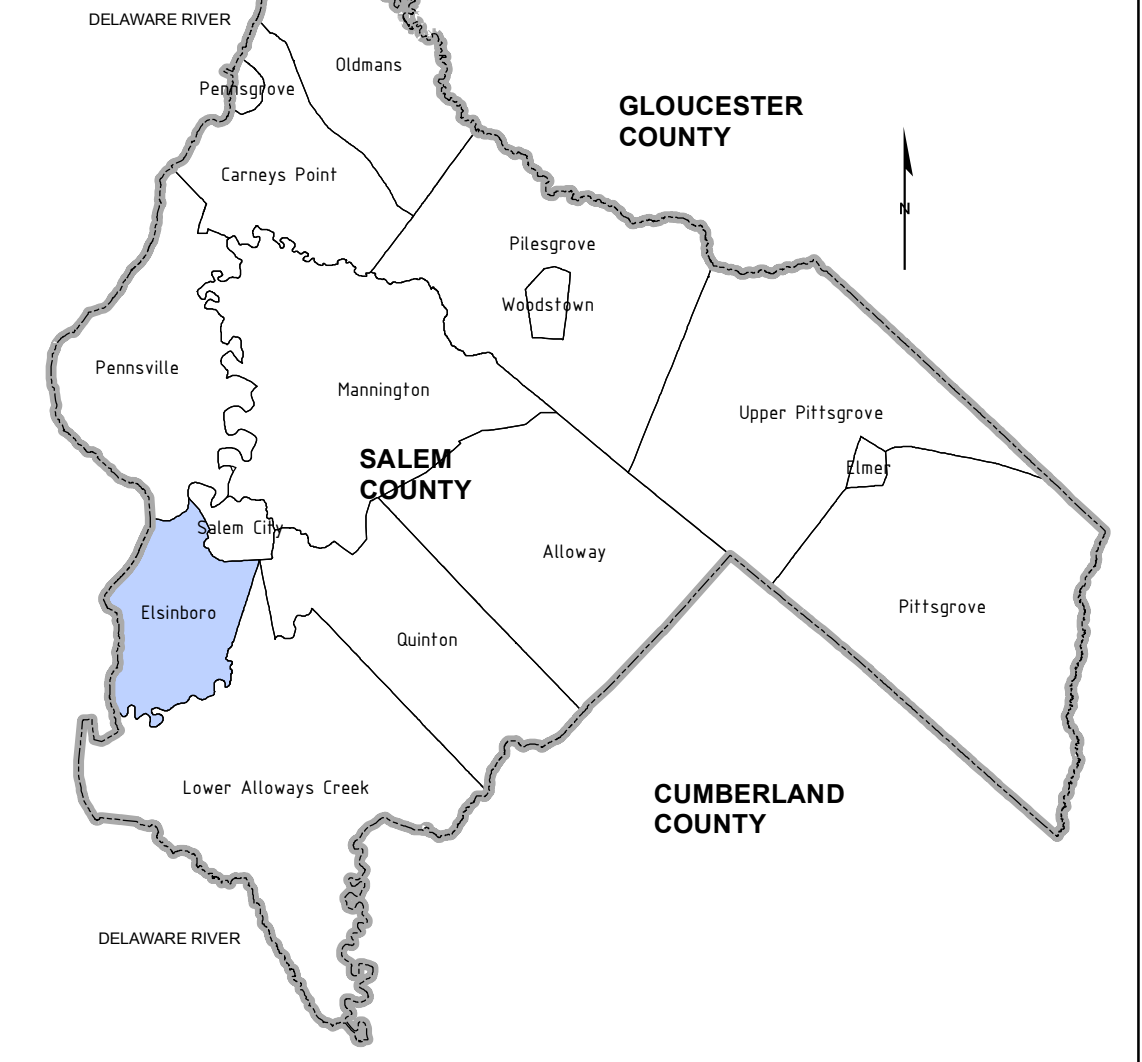


Delaware River

Delaware River



OVERVIEW



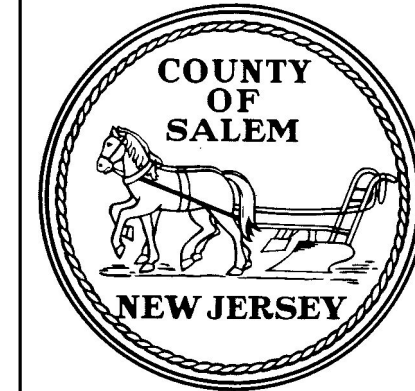
NOTES:

"ALL EXISTING, NEW, OR EXPANDED INDUSTRIAL PRETREATMENT FACILITIES REQUIRING SIGNIFICANT INDIRECT USER (SIU) PERMITS AND/OR TREATMENT WORKS APPROVALS, AND WHICH ARE LOCATED WITHIN THE SPECIFIED SEWER SERVICE AREA, IS DEEMED TO BE CONSISTENT."
BASEMAP INFORMATION INCLUDING PARCELS, ROADS AND MUNICIPAL BOUNDARY TAKEN FROM THE SALEM COUNTY DATABASE FILE.
"THIS (MAP/PUBLICATION/REPORT) WAS DEVELOPED USING NEW JERSEY DEPARTMENT OF ENVIRONMENTAL PROTECTION GEOGRAPHIC INFORMATION SYSTEM DIGITAL DATA, BUT THIS SECONDARY PRODUCT HAS NOT BEEN VERIFIED BY NJDEP AND IS NOT STATE-AUTHORIZED."

NO.	DATE	REVISION	BY:

EXISTING FACILITIES AND SERVICE AREA - MAP 2

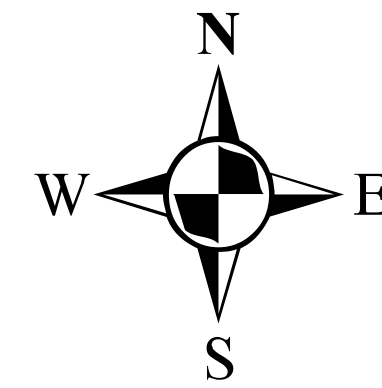
TOWNSHIP OF ELSINBORO
SALEM COUNTY
WASTEWATER MANAGEMENT PLAN
SALEM COUNTY, NEW JERSEY



SALEM COUNTY DEPARTMENT OF PLANNING AND AGRICULTURE
110 FIFTH STREET
SALEM, NEW JERSEY

SICKELS & ASSOCIATES, INC.
SHERWOOD MEWS
833 KINGS HIGHWAY
WOODBURY, NEW JERSEY 08096-3110
NJ CERTIFICATE OF AUTHORIZATION
No. GA219949031
856-848-6800
FAX 848-8520

DRAWN BY: DJP	DATE: 2-16-11	SHEET: 1 of 1
CHECKED BY: DSP	DWG: F-SALEM WMP	FILE: 5363



PENNSVILLE

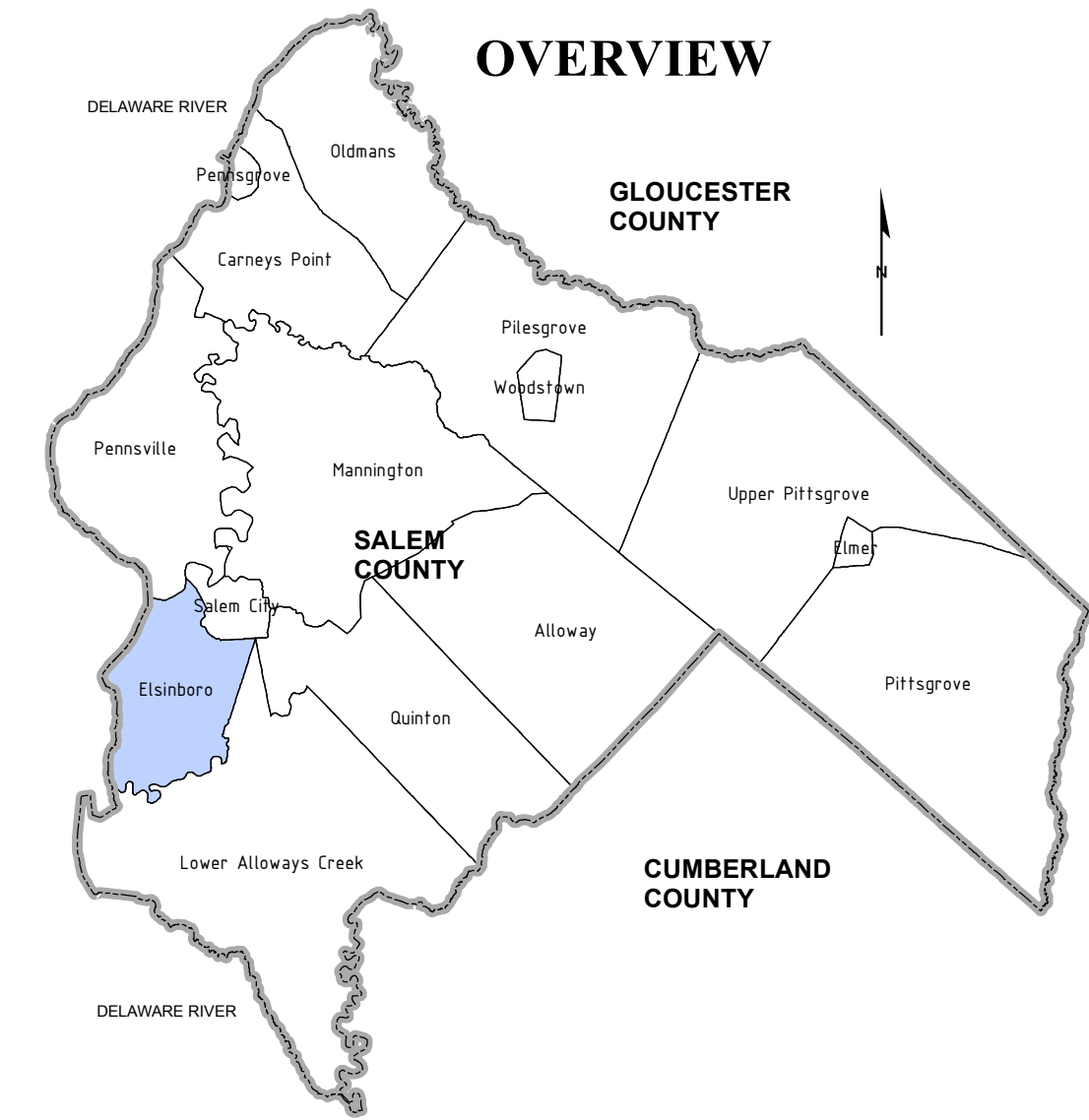
SALEM CITY

QUINTON

ELSINBORO

**Summary of information from Available DEP Sources
August, 2012**

Table #	NJPDES	Facility Name	DIS TYPE
41	NJ0024856	Salem City WWTP	SW



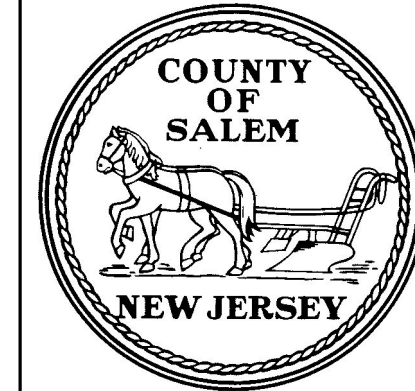
NOTES:

"PLEASE NOTE THAT WHERE THE VISUAL DEPICTION OF SSA DOES NOT EXPLICITLY INDICATE THE SPECIFIC SEWER SERVICE AREA ASSOCIATED WITH THE WASTEWATER TREATMENT FACILITIES, THE STATEWIDE DIGITIZED SEWER SERVICE AREA MAPPING DOES. THE PUBLICALLY AVAILABLE SEWER SERVICE AREA MAPPING IS AVAILABLE FOR VIEWING ON NJ GEO-WEB AT [HTTP://WWW.NJ.GOV/DEP/GIS/GEOWEB/SPASH.HTM](http://www.nj.gov/dep/gis/geoweb/splash.htm). IT IS ALSO AVAILABLE FOR DOWNLOAD TO USE IN ARCGIS AT [HTTP://WWW.NJ.GOV/DEP/GIS/STATESHIP.HTML](http://www.nj.gov/dep/gis/stateship.html).
THE SEWER SERVICE AREA IDENTIFIED ON THIS MAP HAS BEEN REVIEWED BY THE MUNICIPALITY, COUNTY AND DEP. THIS AREA HAS BEEN DEFINED BASED ON ENVIRONMENTAL CONSTRAINTS 'LANDSCAPE PROJECT AREA GIS LAYERS', AVAILABLE FROM THE DEPARTMENT TO CLARIFY AREAS OF POTENTIAL SEWER SERVICE. THE TREATMENT FACILITY FOR THE SEWER SERVICE AREA DOES NOT GUARANTEE THAT SUFFICIENT WASTEWATER TREATMENT CAPACITY WILL BE AVAILABLE FOR THE COMPLETE BUILD OUT OF THE AREA.
LOCATIONS OF FUTURE PUMP STATIONS, MAJOR INTERCEPTORS, AND TRUNK SEWERS ARE BEING PROVIDED FOR GENERAL INFORMATION ONLY AND WILL NOT SERVE AS THE BASIS FOR ANY FUTURE CONSISTENCY DETERMINATIONS OR PERMIT REVIEWS UNLESS THE PUMP STATION, MAJOR INTERCEPTOR OR TRUNK SEWER IS PART OF A STATE OR FEDERALLY FUNDED PROJECT.
*INDIVIDUAL SUBSURFACE SEWAGE DISPOSAL SYSTEMS (ISSDS) FOR INDIVIDUAL RESIDENCES CAN ONLY BE CONSTRUCTED IN DEPICTED SEWER SERVICE AREAS IF LEGALLY ENFORCEABLE GUARANTEES ARE PROVIDED, BEFORE SUCH CONSTRUCTION, THAT USE OF SUCH SYSTEMS WILL BE DISCONTINUED WHEN THE DEPICTED SEWER SERVICE BECOMES AVAILABLE. THIS APPLIES TO ISSDS THAT REQUIRE CERTIFICATION FROM THE DEPARTMENT UNDER THE REALTY IMPROVEMENT SEWERAGE AND FACILITIES ACT (NJSA 58:11-23) OR INDIVIDUAL TREATMENT WORKS APPROVAL OR NEW JERSEY POLLUTANT DISCHARGE ELIMINATION SYSTEM PERMITS (UNDER NJAC 7:14A). IT ALSO APPLIES TO ISSDS WHICH REQUIRE ONLY LOCAL APPROVALS. COMPLIANCE WITH THE CONNECTION REQUIREMENT HAS BEEN DEMONSTRATED THROUGH ADOPTION TOWNSHIP OF ELSINBORO ORDINANCE (INSERT ORDINANCE #).
*PRE-EXISTING GRANT CONDITIONS AND REQUIREMENTS (FROM FEDERAL AND STATE GRANTS OR LOANS FOR SEWERAGE FACILITIES) WHICH PROVIDE FOR RESTRICTION OF SEWER SERVICE TO ENVIRONMENTALLY SENSITIVE AREAS, ARE UNAFFECTED BY ADOPTION OF THIS WMP AND COMPLIANCE IS REQUIRED. PLEASE SEE MUNICIPAL WMP CHAPTERS FOR THE EXISTENCE OF ANY APPLICABLE ENVIRONMENTALLY SENSITIVE AREAS IN WHICH FEDERAL 201 GRANT LIMITATIONS PROHIBIT THE EXTENSION OF SEWER SERVICE.
ALL EXISTING, NEW, OR EXPANDED INDUSTRIAL PRETREATMENT FACILITIES REQUIRING SIGNIFICANT INDIRECT USER (SUI) PERMITS AND/OR TREATMENT WORKS APPROVALS, AND WHICH ARE LOCATED WITHIN THE SPECIFIED SEWER SERVICE AREA, IS DEEMED TO BE CONSISTENT.
IN ADDITION TO THE TEXT FOUND IN THE WMP TEMPLATE DOCUMENT THE FOLLOWING IS NEEDED: *PROPOSED DEVELOPMENTS TYING INTO EXISTING AND PROPOSED SEWER SERVICE AREAS WHICH REQUIRE COASTAL PERMITS MUST DEMONSTRATE COMPLIANCE WITH ALL APPLICABLE SECTIONS OF THE COASTAL ZONE MANAGEMENT RULES INCLUDING, BUT NOT LIMITED TO, WETLANDS (N.J.A.C. 7:7E-3.27), WETLANDS BUFFERS (N.J.A.C. 7:7E-3.38), SECONDARY IMPACTS (N.J.A.C. 7:7E-6.3), PUBLIC FACILITY USE POLICIES (N.J.A.C. 7:7E-7.6), WATER QUALITY (N.J.A.C. 7:7E-8.4), GROUND WATER USE (N.J.A.C. 7:7E-8.6) AND THE POLICIES UNDER GENERAL LAND AREAS RULES, SUBCHAPTERS 5, 5A AND 5B.
BASEMAP INFORMATION INCLUDING PARCELS, ROADS AND MUNICIPAL BOUNDARY TAKEN FROM THE SALEM COUNTY DATABASE FILE.
THIS MAP/PUBLICATION/REPORT WAS DEVELOPED USING NEW JERSEY DEPARTMENT OF ENVIRONMENTAL PROTECTION GEOGRAPHIC INFORMATION SYSTEM DIGITAL DATA, BUT THIS SECONDARY PRODUCT HAS NOT BEEN VERIFIED BY NJDEP AND IS NOT STATE AUTHORIZED.

NO.	DATE	REVISION	BY:
3.	9-2-15	ADDED NOTE PER NJDEP COMMENTS	DJP
1.	7-14-14	REV. PER NJDEP COMMENTS	DJP

REVISIONS
FUTURE SEWER SERVICE AREA - MAP 3

TOWNSHIP OF ELSINBORO
SALEM COUNTY
WASTEWATER MANAGEMENT PLAN
SALEM COUNTY, NEW JERSEY



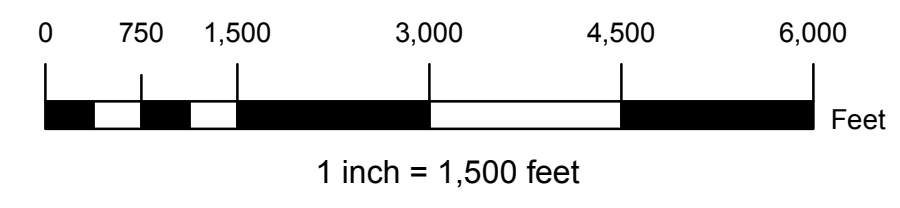
SALEM COUNTY DEPARTMENT OF PLANNING AND AGRICULTURE
110 FIFTH STREET
SALEM, NEW JERSEY

SICKELS & ASSOCIATES, INC.
SHERWOOD MEWS
833 KINGS HIGHWAY
WOODBURY, NEW JERSEY 08096-3110
NJ CERTIFICATE OF AUTHORIZATION
No. GA27994960
856-848-6800
FAX 848-8520

LEGEND

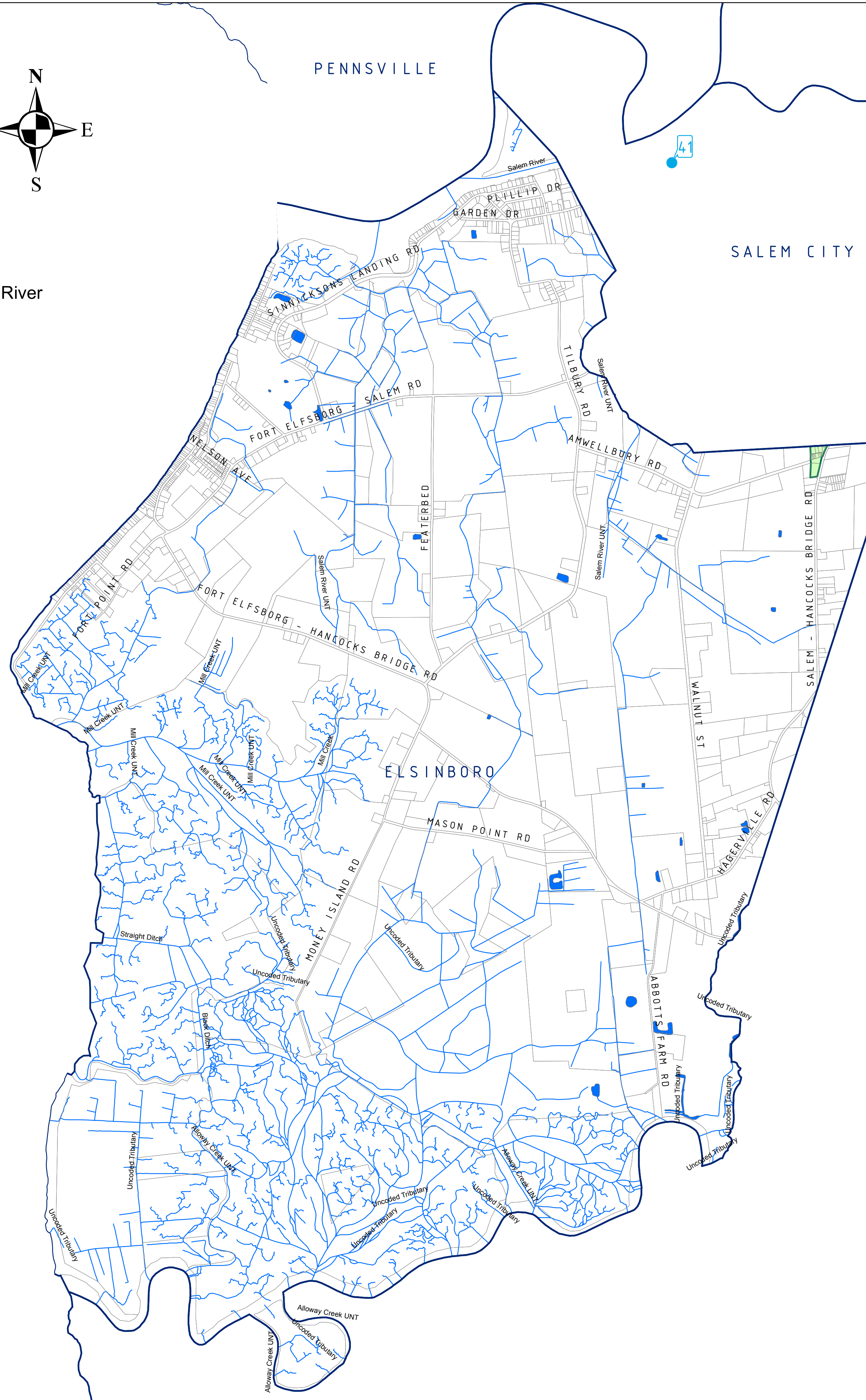
- NJPDES AREA
- FUTURE SEWER SERVICE AREA

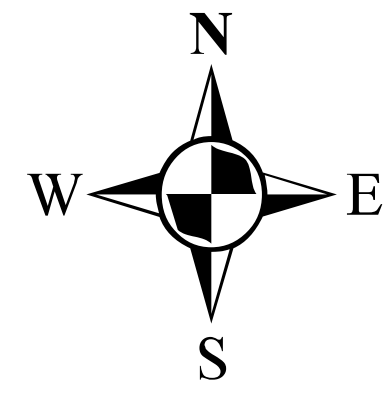
LOWER ALLOWAYS CREEK



Delaware River

Delaware River





Delaware River

Delaware River

PENNSVILLE

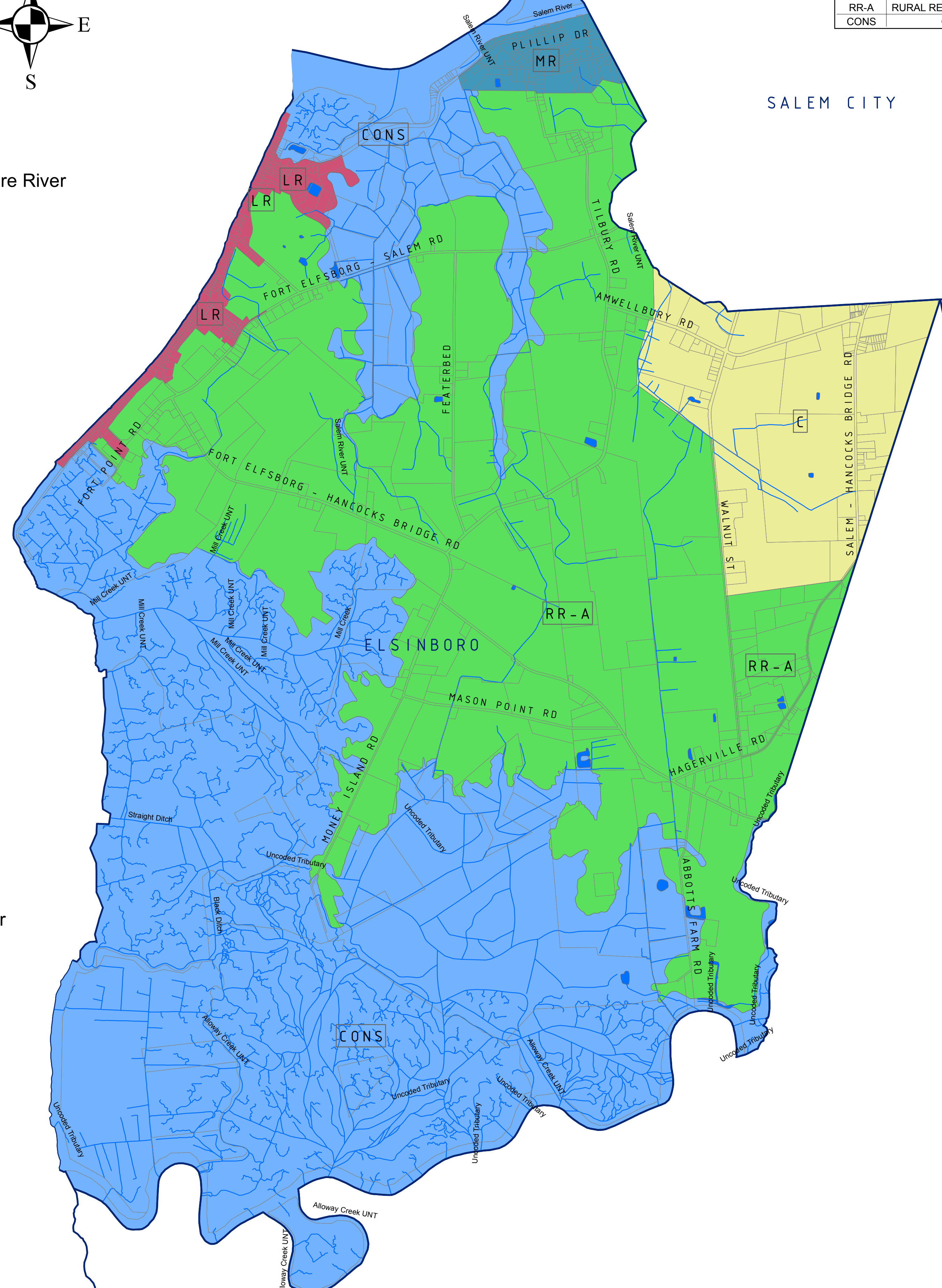
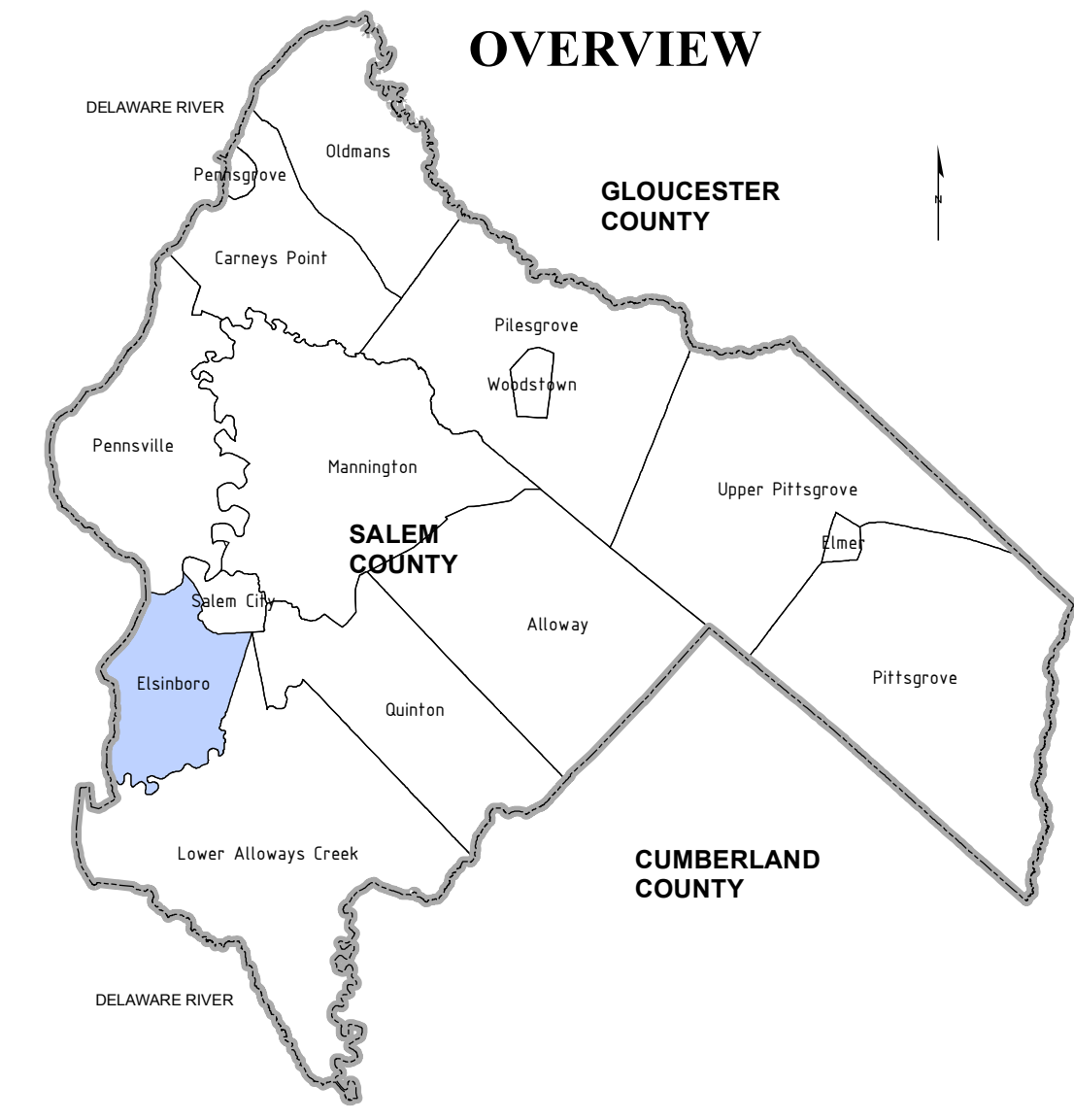
PENNSVILLE

SALEM CITY

QUINTON

LOWER ALLOWAYS CREEK

ZONING SUMMARY TABLE										
ZONE	ZONE TITLE	MINIMUM LOT AREA	MINIMUM LOT WIDTH	MINIMUM LOT DEPTH	MINIMUM FRONT YARD SETBACK	MINIMUM SIDE YARD SETBACK	MINIMUM REAR YARD SETBACK	MAXIMUM BUILDING HEIGHT	MAXIMUM BUILDING COVERAGE	MAXIMUM ADDITIONAL LOT COVERAGE
C	COMMERCIAL	25,000 SF	125'	175'	50'	20'	30'	35'	40%	35%
LR	LOW DENSITY RESIDENTIAL	25,000 SF	125'	175'	40'	20'	35'	35'	20%	35%
MR	MEDIUM DENSITY RESIDENTIAL	18,000 SF	100'	150'	35'	15'	30'	35'	20%	25%
RR-A	RURAL RESIDENTIAL-AGRICULTURE	75,000 SF	175'	200'	50'	25'	50'	35'	15%	15%
CONS	CONSERVATION	5 ACRES	300'	400'	50'	30'	60'	35'	5%	5%



LEGEND

- C - COMMERCIAL
- CONS - CONSERVATION
- LR - LOW DENSITY RESIDENTIAL 25,000 SF
- MR - MEDIUM DENSITY RESIDENTIAL 18,000 SF
- RR-A - RURAL RESIDENTIAL AGRICULTURE 5 ACRE

NOTES:

ZONING MAP TAKEN FROM SALEM COUNTY DATABASE FILE DATED 12-8-10. ZONING MAP DATED 9-4-07. ORDINANCE INFORMATION TAKEN FROM THE ELSINBORO ORDINANCE DATED 8-15-08.

"THIS (MAP/PUBLICATION/REPORT) WAS DEVELOPED USING NEW JERSEY DEPARTMENT OF ENVIRONMENTAL PROTECTION GEOGRAPHIC INFORMATION SYSTEM DIGITAL DATA, BUT THIS SECONDARY PRODUCT HAS NOT BEEN VERIFIED BY NJDEP AND IS NOT STATE-AUTHORIZED."

NO.	DATE	REVISION	BY:

ZONING - MAP 4

TOWNSHIP OF ELSINBORO
SALEM COUNTY
WASTEWATER MANAGEMENT PLAN
SALEM COUNTY, NEW JERSEY

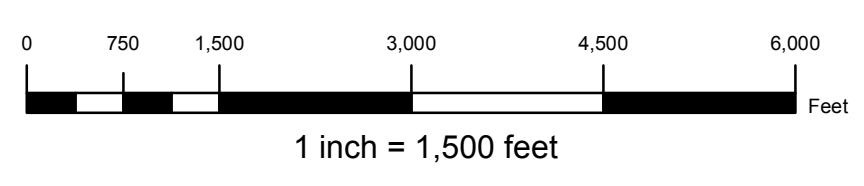


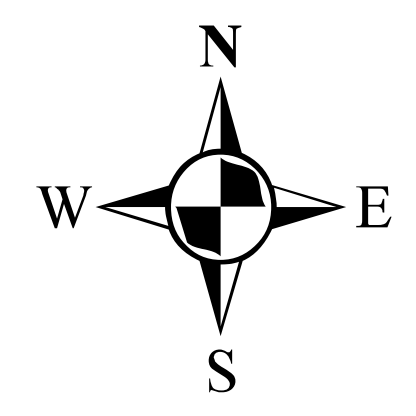
SALEM COUNTY DEPARTMENT OF PLANNING AND AGRICULTURE
110 FIFTH STREET
SALEM, NEW JERSEY

SICKELS & ASSOCIATES, INC.

SHERWOOD MEWS
833 KINGS HIGHWAY
WOODBURY, NEW JERSEY 08096-3110
NJ CERTIFICATE OF AUTHORIZATION
No. GA27994903 856-848-6800
FAX 848-8520

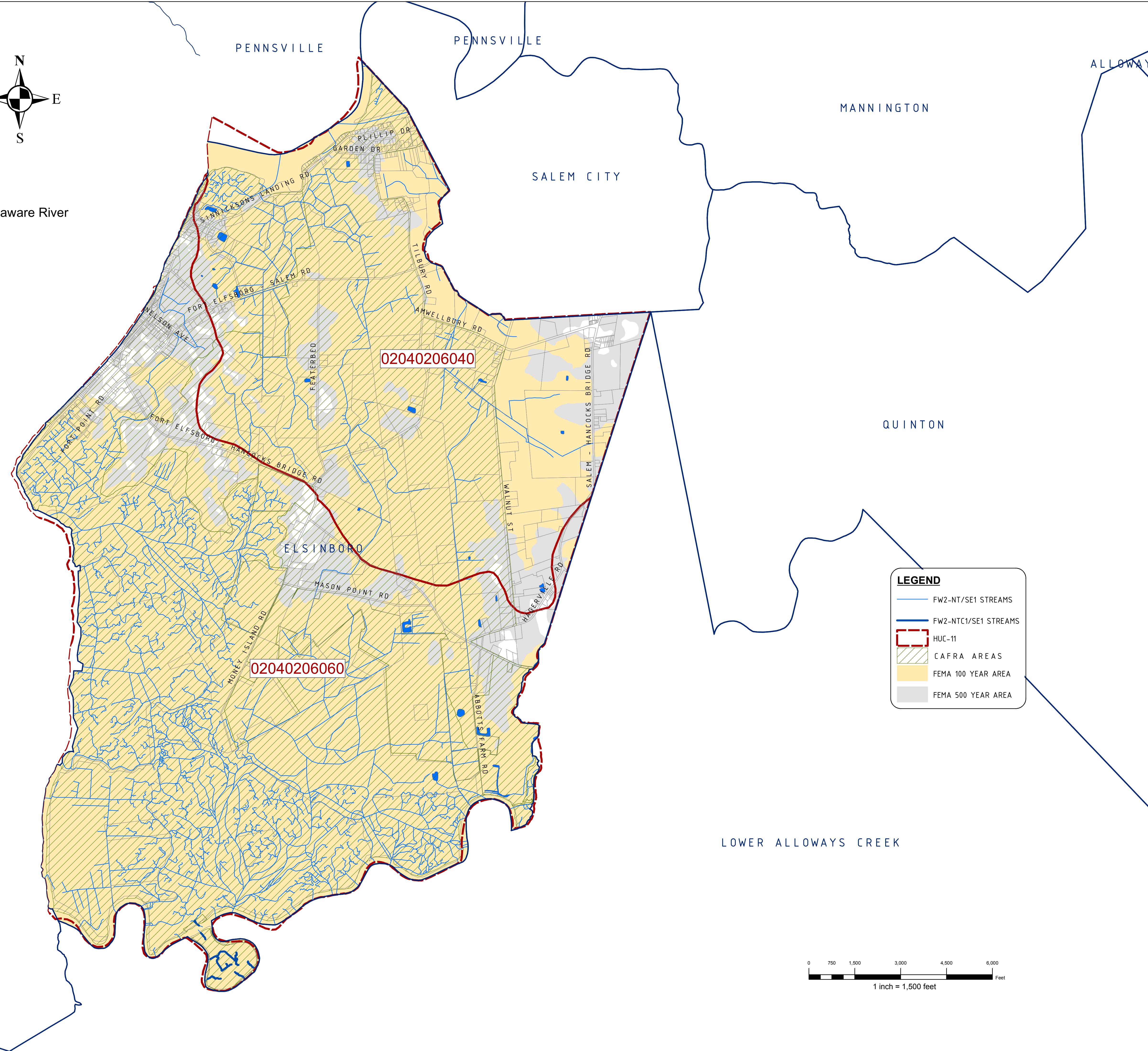
DRAWN BY: DJP	DATE: 2-16-11	SHEET: 1 of 1
CHECKED BY: DSP	DWG: F-SALEM WMP	FILE: 5363





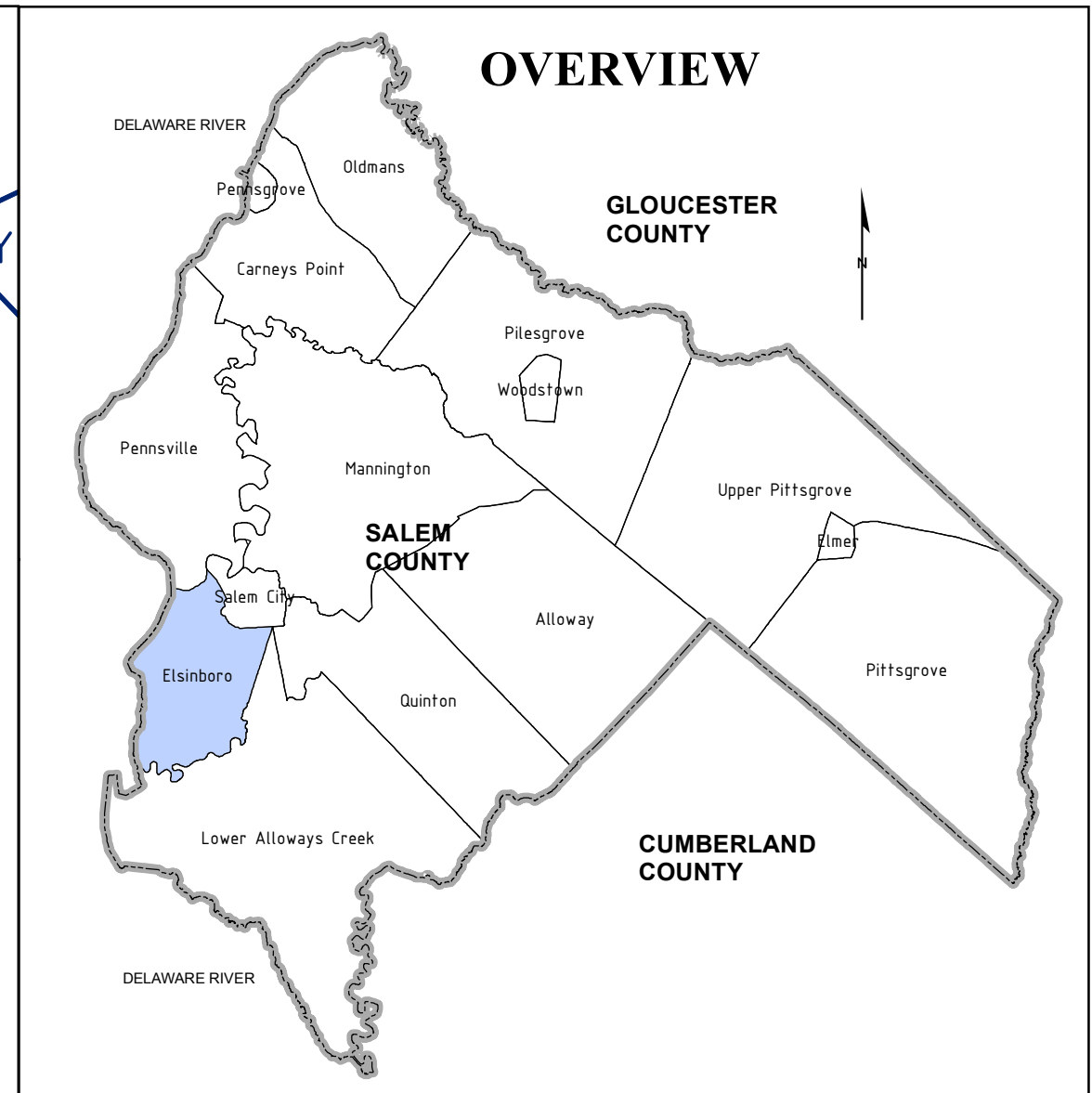
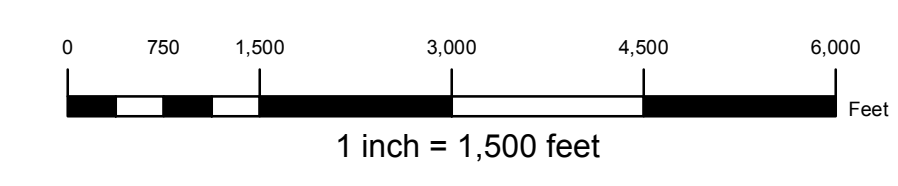
Delaware River

Delaware River



LEGEND

- FW2-NT/SE1 STREAMS
- FW2-NTC1/SE1 STREAMS
- HUC-11
- CAFRA AREAS
- FEMA 100 YEAR AREA
- FEMA 500 YEAR AREA



NOTES:

"DEVELOPMENT IN AREAS MAPPED AS WETLANDS, FLOOD PRONE AREAS, SUITABLE HABITAT FOR ENDANGERED AND THREATENED SPECIES AS IDENTIFIED ON THE DEPARTMENT'S LANDSCAPE MAPS OF HABITAT FOR ENDANGERED, THREATENED AND OTHER PRIORITY WILDLIFE AS RANK 3.4 AND 5, NATURAL HERITAGE PRIORITY SITES, RIPARIAN ZONES, STEEP SLOPES, OR DESIGNATED RIVER AREAS MAY BE SUBJECT TO SPECIAL REGULATION UNDER FEDERAL OR STATE STATUTES OR RULES, AND THAT INTERESTED PERSONS SHOULD CHECK WITH THE DEPARTMENT FOR THE LATEST INFORMATION. DEPICTION OF ENVIRONMENTAL FEATURES SHALL BE FOR GENERAL INFORMATION PURPOSES ONLY, AND SHALL NOT BE CONSTRUED TO DEFINE THE LEGAL GEOGRAPHIC JURISDICTION OF SUCH STATUTES OR RULES"

BASEMAP INFORMATION INCLUDING PARCELS, ROADS AND MUNICIPAL BOUNDARY TAKEN FROM THE SALEM COUNTY DATABASE FILE.

"THIS MAP/PUBLICATION/REPORT WAS DEVELOPED USING NEW JERSEY DEPARTMENT OF ENVIRONMENTAL PROTECTION GEOGRAPHIC INFORMATION SYSTEM DIGITAL DATA, BUT THIS SECONDARY PRODUCT HAS NOT BEEN VERIFIED BY NJDEP AND IS NOT STATE-AUTHORIZED."

NO.	DATE	REVISION	BY:
REVISIONS			

ENVIRONMENTAL FEATURES - MAP 5A CATEGORY ONE STREAMS, CAFRA, HUC 11, FEMA AREAS

TOWNSHIP OF ELSINBORO

SALEM COUNTY
WASTEWATER MANAGEMENT PLAN
SALEM COUNTY, NEW JERSEY

SALEM COUNTY DEPARTMENT OF PLANNING AND AGRICULTURE

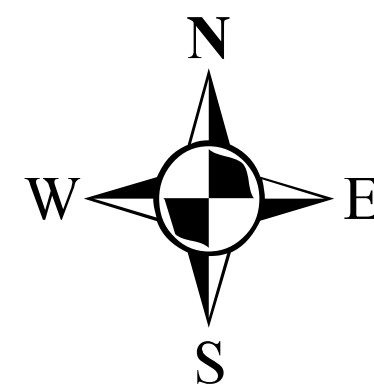
110 FIFTH STREET
SALEM, NEW JERSEY

SICKLES & ASSOCIATES, INC.

SHERWOOD MEWS
833 KINGS HIGHWAY
WOODBURY, NEW JERSEY 08096-3110
NJ CERTIFICATE OF AUTHORIZATION
No. GA27994900

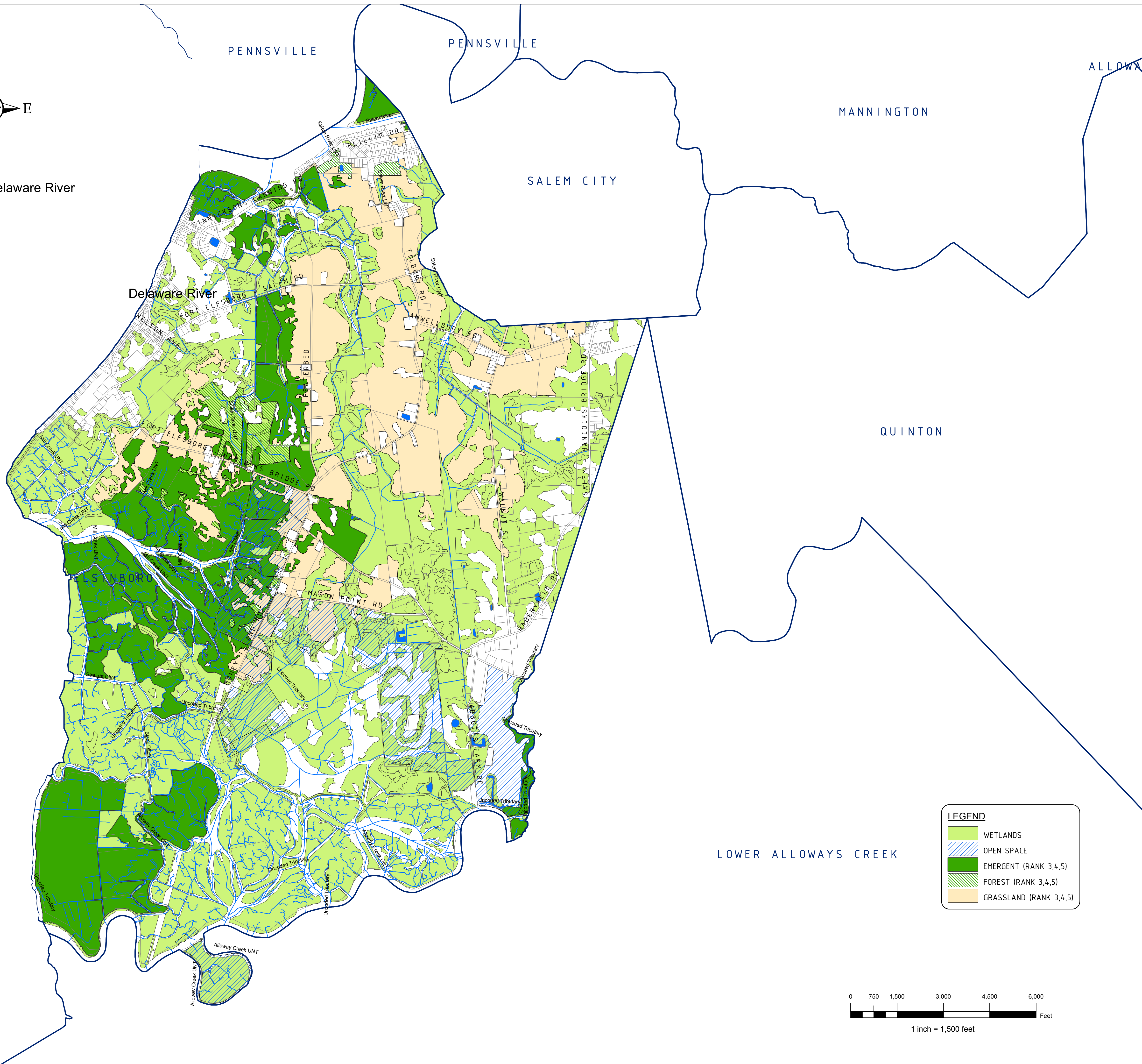
856-848-6800
FAX 848-8520

DRAWN BY: DJP	DATE: 2-16-11	SHEET: 1 of 1
CHECKED BY: DSP	DWG: F-SALEM WMP	FILE: 5363



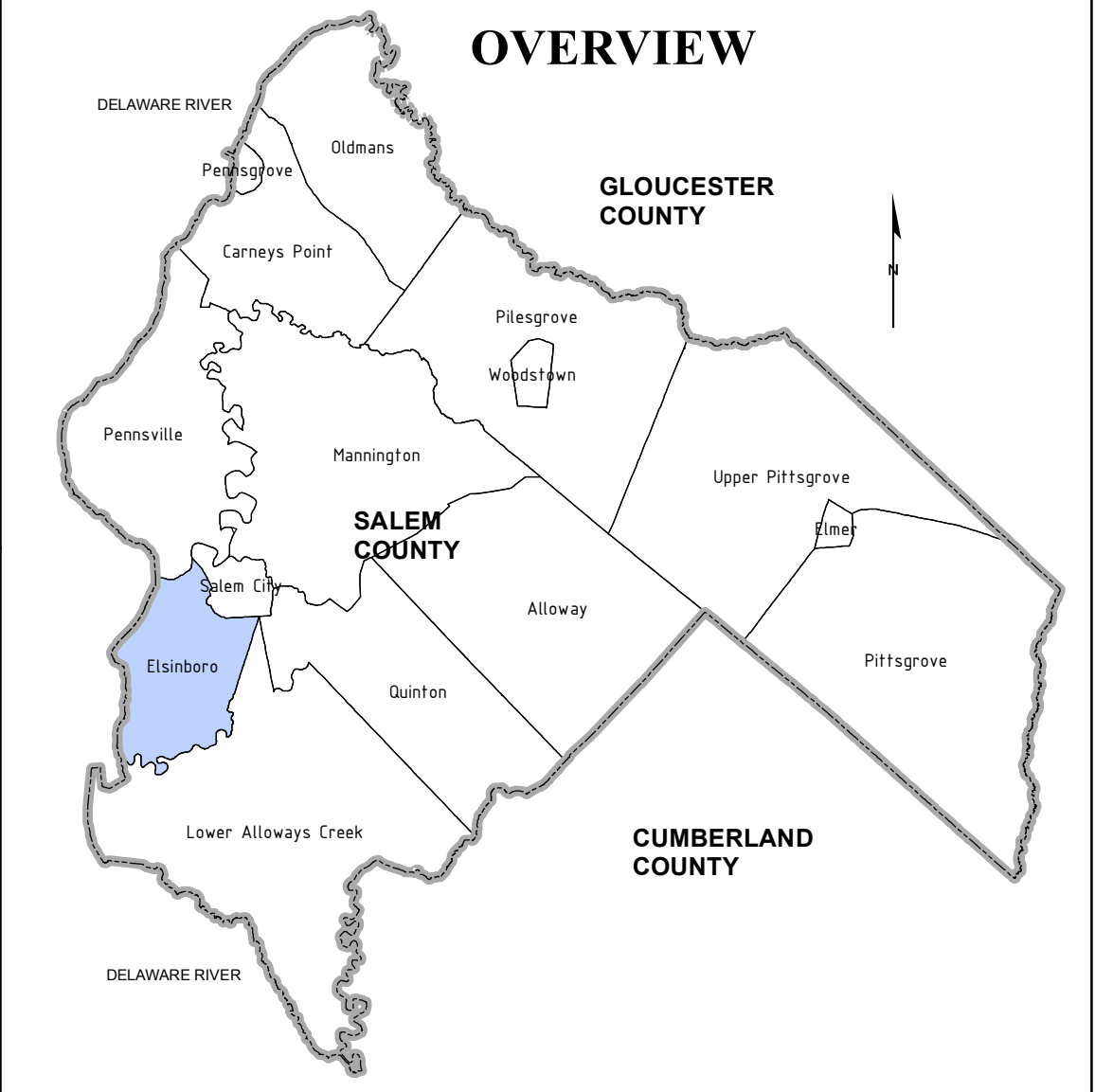
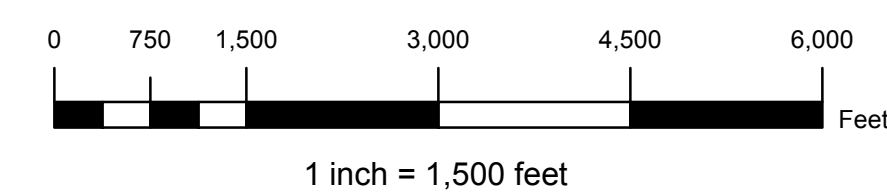
Delaware River

Delaware River



LEGEND

- WETLANDS
- OPEN SPACE
- EMERGENT (RANK 3,4,5)
- FOREST (RANK 3,4,5)
- GRASSLAND (RANK 3,4,5)



NOTES:

"DEVELOPMENT IN AREAS MAPPED AS WETLANDS, FLOOD PRONE AREAS, SUITABLE HABITAT FOR ENDANGERED AND THREATENED SPECIES AS IDENTIFIED ON THE DEPARTMENT'S LANDSCAPE MAPS OF HABITAT FOR ENDANGERED, THREATENED AND OTHER PRIORITY WILDLIFE AS RANK 3,4, AND 5, NATURAL HERITAGE PRIORITY SITES, RIPARIAN ZONES, STEEP SLOPES, OR DESIGNATED RIVER AREAS MAY BE SUBJECT TO SPECIAL REGULATION UNDER FEDERAL OR STATE STATUTES OR RULES, AND THAT INTERESTED PERSONS SHOULD CHECK WITH THE DEPARTMENT FOR THE LATEST INFORMATION. DEPICTION OF ENVIRONMENTAL FEATURES SHALL BE FOR GENERAL INFORMATION PURPOSES ONLY, AND SHALL NOT BE CONSTRUED TO DEFINE THE LEGAL GEOGRAPHIC JURISDICTION OF SUCH STATUTES OR RULES"

BASEMAP INFORMATION INCLUDING PARCELS, ROADS AND MUNICIPAL BOUNDARY TAKEN FROM THE SALEM COUNTY DATABASE FILE.

"THIS (MAP/PUBLICATION/REPORT) WAS DEVELOPED USING NEW JERSEY DEPARTMENT OF ENVIRONMENTAL PROTECTION GEOGRAPHIC INFORMATION SYSTEM DIGITAL DATA, BUT THIS SECONDARY PRODUCT HAS NOT BEEN VERIFIED BY NJDEP AND IS NOT STATE-AUTHORIZED."

NO.	DATE	REVISION	BY:

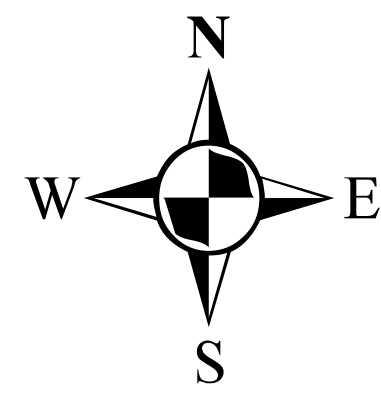
**ENVIRONMENTAL FEATURES - MAP 5B
WETLANDS, GRASSLANDS, EMERGENT,
FOREST, OPEN SPACE AREAS
TOWNSHIP OF ELSINBORO
SALEM COUNTY
WASTEWATER MANAGEMENT PLAN
SALEM COUNTY, NEW JERSEY**

**SALEM COUNTY DEPARTMENT OF
PLANNING AND AGRICULTURE**
110 FIFTH STREET
SALEM, NEW JERSEY

SICKELS & ASSOCIATES, INC.

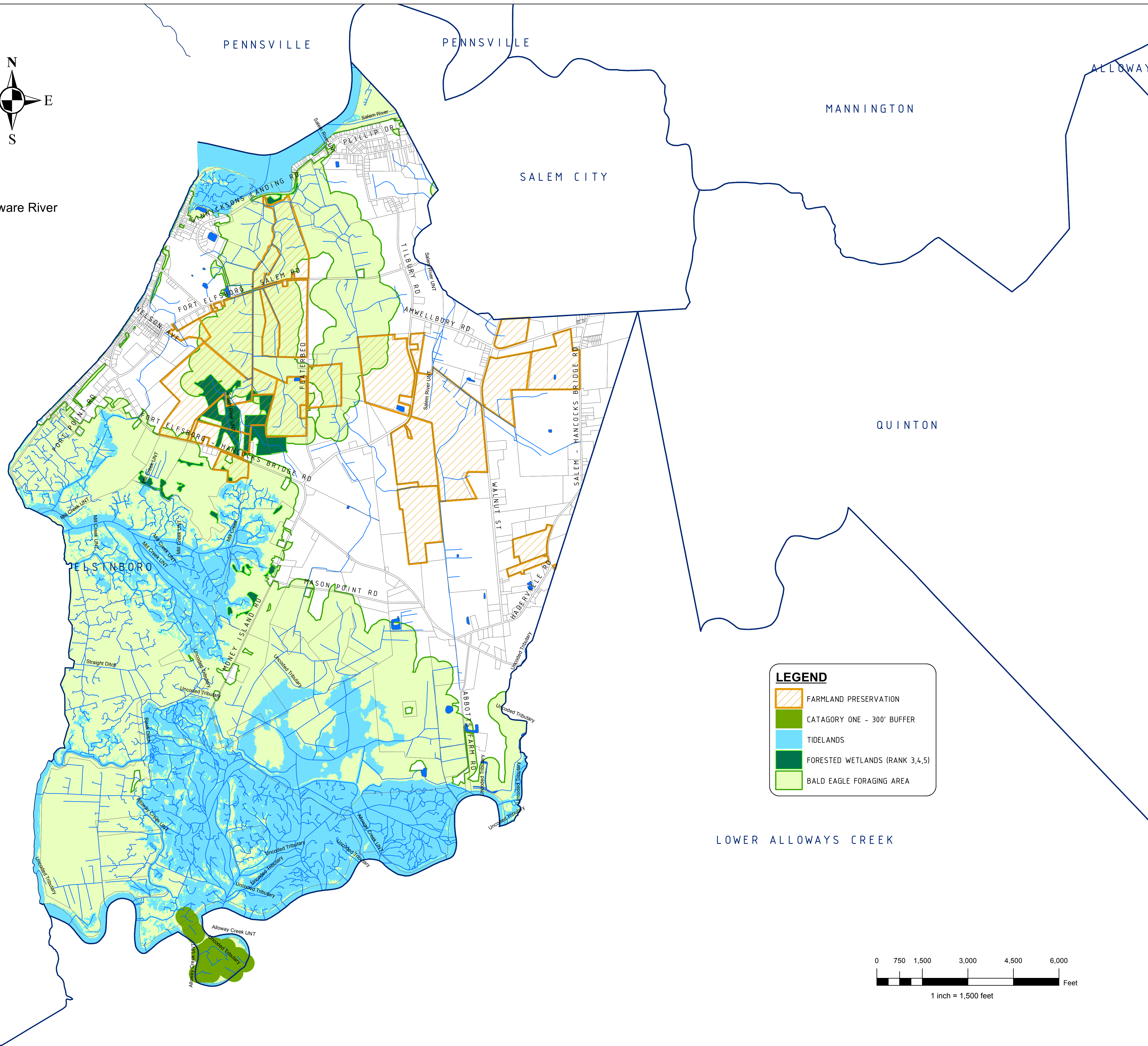
SHERWOOD MEWS
833 KINGS HIGHWAY
WOODBURY, NEW JERSEY 08096-3110
NJ CERTIFICATE OF AUTHORIZATION
No. GA27949600
856-848-6800
FAX 848-8520

DRAWN BY: DJP	DATE: 2-16-11	SHEET: 1 of 1
CHECKED BY: DSP	DWG: F-SALEM WMP	FILE: 5363



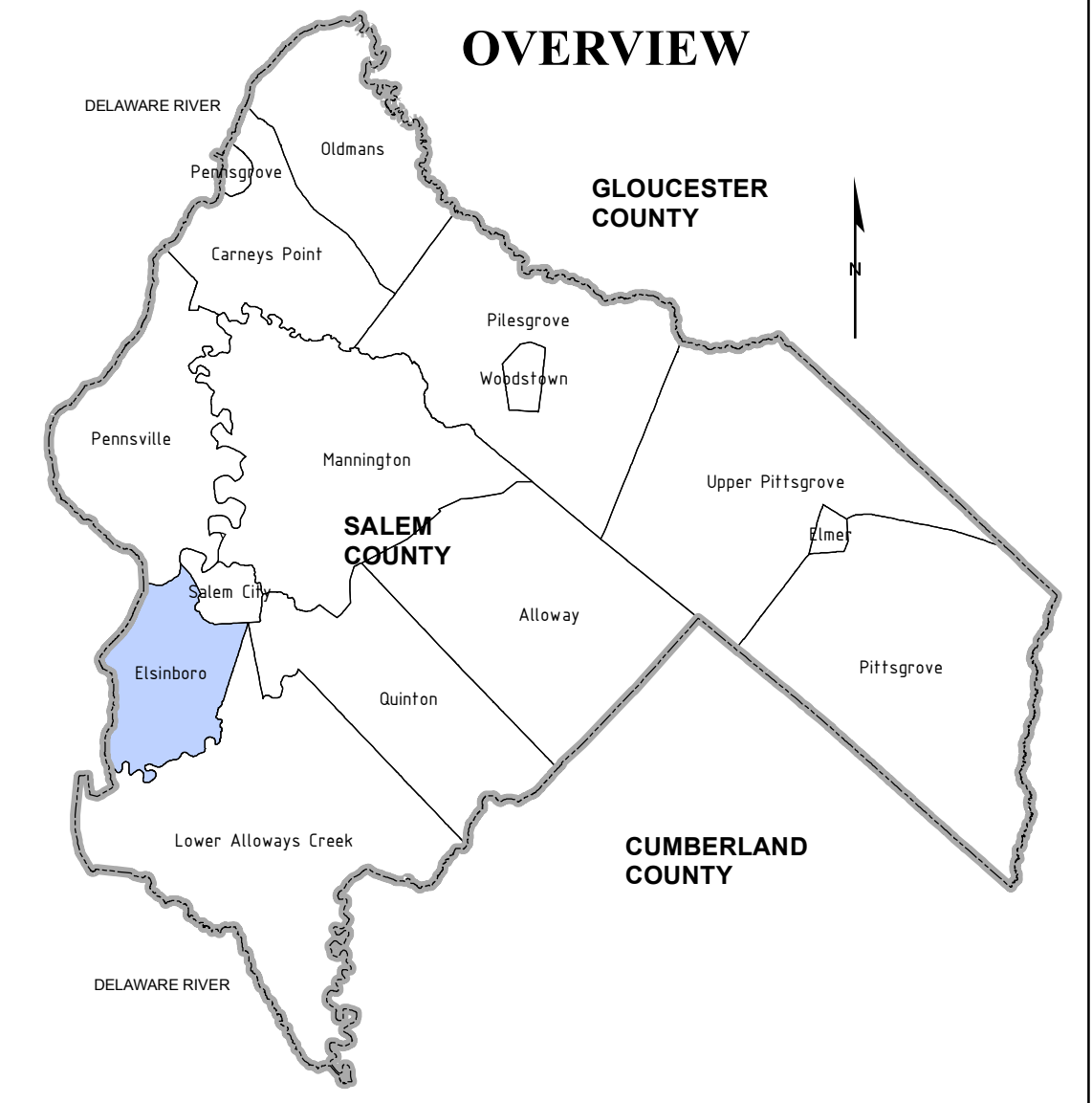
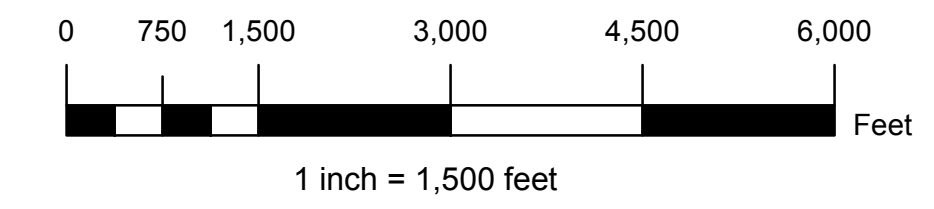
Delaware River

Delaware River



LEGEND

- FARMLAND PRESERVATION
- CATEGORY ONE - 300' BUFFER
- TIDELANDS
- FORESTED WETLANDS (RANK 3,4,5)
- BALD EAGLE FORAGING AREA



NOTES:

"DEVELOPMENT IN AREAS MAPPED AS WETLANDS, FLOOD PRONE AREAS, SUITABLE HABITAT FOR ENDANGERED AND THREATENED SPECIES AS IDENTIFIED ON THE DEPARTMENT'S LANDSCAPE MAPS OF HABITAT FOR ENDANGERED, THREATENED AND OTHER PRIORITY WILDLIFE AS RANK 3,4, AND 5, NATURAL HERITAGE PRIORITY SITES, RIPARIAN ZONES, STEEP SLOPES, OR DESIGNATED RIVER AREAS MAY BE SUBJECT TO SPECIAL REGULATION UNDER FEDERAL OR STATE STATUTES OR RULES, AND THAT INTERESTED PERSONS SHOULD CHECK WITH THE DEPARTMENT FOR THE LATEST INFORMATION. DEPICTION OF ENVIRONMENTAL FEATURES SHALL BE FOR GENERAL INFORMATION PURPOSES ONLY, AND SHALL NOT BE CONSTRUED TO DEFINE THE LEGAL GEOGRAPHIC JURISDICTION OF SUCH STATUTES OR RULES"

BASEMAP INFORMATION INCLUDING PARCELS, ROADS AND MUNICIPAL BOUNDARY TAKEN FROM THE SALEM COUNTY DATABASE FILE.

"THIS (MAP/PUBLICATION/REPORT) WAS DEVELOPED USING NEW JERSEY DEPARTMENT OF ENVIRONMENTAL PROTECTION GEOGRAPHIC INFORMATION SYSTEM DIGITAL DATA, BUT THIS SECONDARY PRODUCT HAS NOT BEEN VERIFIED BY NJDEP AND IS NOT STATE-AUTHORIZED."

NO.	DATE	REVISION	BY:
REVISIONS			

ENVIRONMENTAL FEATURES - MAP 5C FORESTED WETLANDS, BALD EAGLE FORAGING, 300' BUFFERS, FARMLAND PRESERVATION, TIDELANDS AREAS
TOWNSHIP OF ELSINORO
 SALEM COUNTY
 WASTEWATER MANAGEMENT PLAN
 SALEM COUNTY, NEW JERSEY

SALEM COUNTY DEPARTMENT OF PLANNING AND AGRICULTURE
 110 FIFTH STREET
 SALEM, NEW JERSEY

SICKELS & ASSOCIATES INC.

SHERWOOD MEWS
 833 KINGS HIGHWAY
 WOODBURY, NEW JERSEY 08096-3110
 NJ CERTIFICATE OF AUTHORIZATION
 No. GA27994900 856-848-6800
 FAX 848-8520

DRAWN BY: DJP	DATE: 2-16-11	SHEET: 1 of 1
CHECKED BY: DSP	DWG: F-SALEM WMP	FILE: 5363