

**NOTES:**

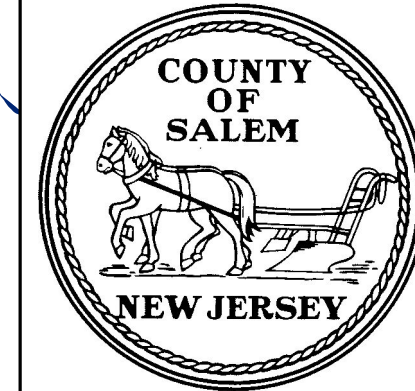
WATERMANS, TOWERS, WELLS AND TREATMENT FACILITIES TAKEN FROM SHAPE FILES SUPPLIED BY NEW JERSEY AMERICAN WATER.

BASEMAP INFORMATION INCLUDING PARCELS, ROADS AND MUNICIPAL BOUNDARY TAKEN FROM THE SALEM COUNTY DATABASE FILE.

"THIS (MAP/PUBLICATION/REPORT) WAS DEVELOPED USING NEW JERSEY DEPARTMENT OF ENVIRONMENTAL PROTECTION GEOGRAPHIC INFORMATION SYSTEM DIGITAL DATA, BUT THIS SECONDARY PRODUCT HAS NOT BEEN VERIFIED BY NJDEP AND IS NOT STATE-AUTHORIZED."

NO.	DATE	REVISION	BY:

WASTEWATER MANAGEMENT PLAN  
 PLANNING AREA & WATER SUPPLY - MAP 1  
**TOWNSHIP OF OLDMANS**  
 SALEM COUNTY  
 WASTEWATER MANAGEMENT PLAN  
 SALEM COUNTY, NEW JERSEY



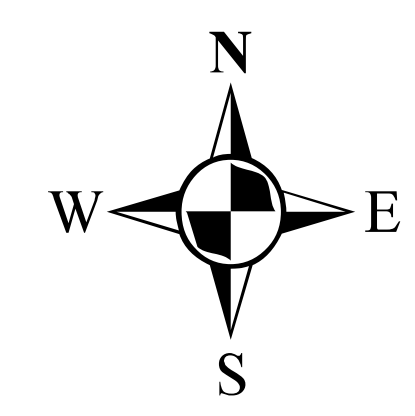
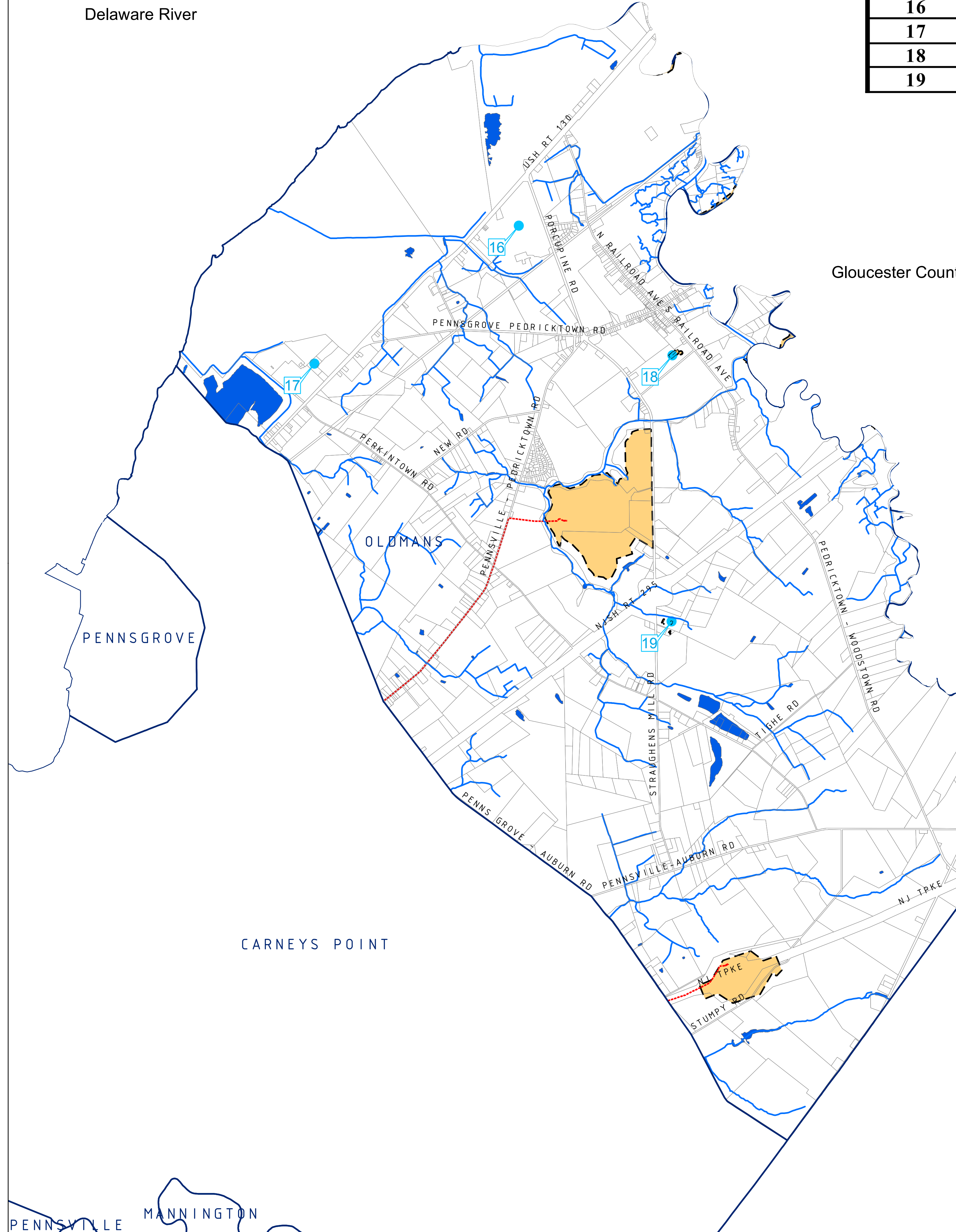
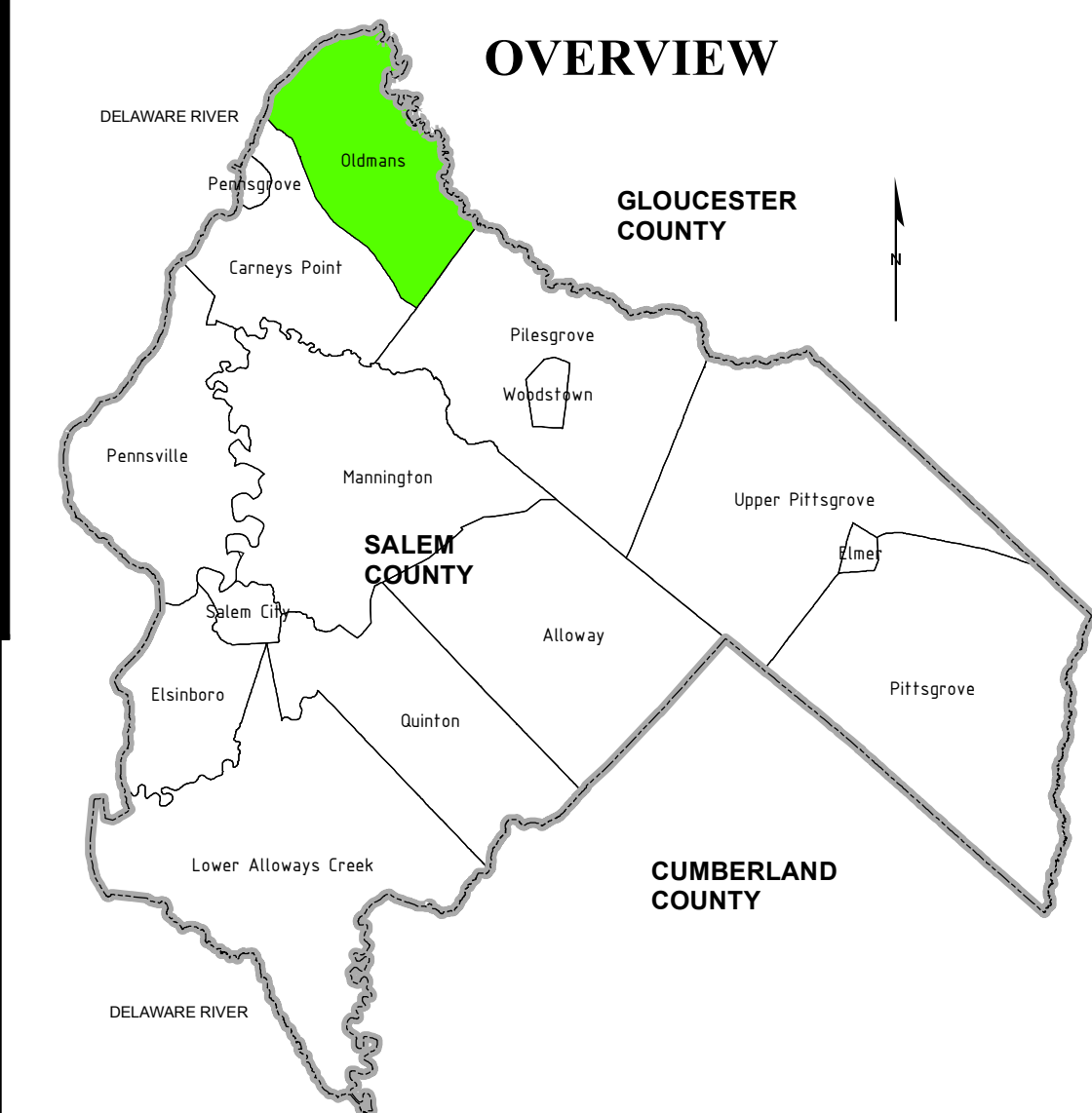
SALEM COUNTY DEPARTMENT OF  
 PLANNING AND AGRICULTURE  
 110 FIFTH STREET  
 SALEM, NEW JERSEY

**SICKELS & ASSOCIATES, INC.**

SHERWOOD MEWS  
 833 KINGS HIGHWAY  
 WOODBURY, NEW JERSEY 08096-3110  
 NJ CERTIFICATE OF AUTHORIZATION  
 No. GA27994903 856-848-6800  
 FAX 848-8520

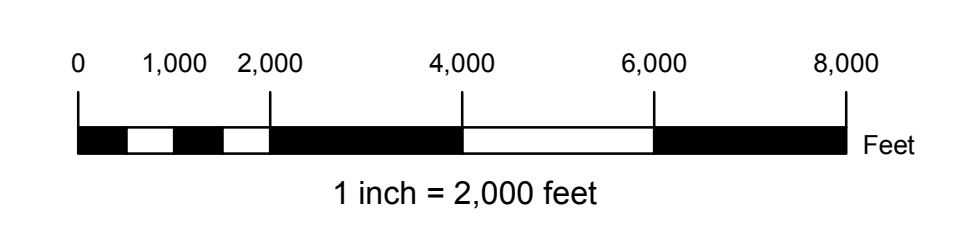
DRAWN BY: DJP	DATE: 2-24-12	SHEET: 1 of 1
CHECKED BY: DSP	DWG: F-SALEM WMP	FILE: 5363

New Table #	Summary of information from Available DEP Sources		August, 2012
	NJPDES	Facility Name	DIS TYPE
<b>Oldmans Township</b>			
16	NJ0004286	Polyone Corp - Pedricktown	SW
17	NJ0024635	Fort Dix - Pedricktown Sup Fac	SW
18	NJ0137707	Oldmans Township School	T1
19	NJG0100684	295 Auto Truck Plaza Inc	T1



**LEGEND**

- NJPDES & T-1 AREA
- - - - - SANITARY FORCE MAIN
- T-1 & NJPDES AREA
- EXISTING SEWER SERVICE AREA



**NOTES:**

"LOCATIONS OF FUTURE PUMP STATIONS, MAJOR INTERCEPTORS, AND TRUNK SEWERS ARE BEING PROVIDED FOR GENERAL INFORMATION ONLY AND WILL NOT SERVE AS THE BASIS FOR ANY FUTURE CONSISTENCY DETERMINATIONS OR PERMIT REVIEWS UNLESS THE PUMP STATION, MAJOR INTERCEPTOR OR TRUNK SEWER IS PART OF A STATE OR FEDERALLY FUNDED PROJECT."

"ALL EXISTING, NEW, OR EXPANDED INDUSTRIAL PRETREATMENT FACILITIES REQUIRING SIGNIFICANT INDIRECT USER (SIU) PERMITS AND/OR TREATMENT WORKS APPROVALS, AND WHICH ARE LOCATED WITHIN THE SPECIFIED SEWER SERVICE AREA, IS DEEMED TO BE CONSISTENT."

SANITARY SEWER INFORMATION TAKEN FROM A DRAWING FILE SUPPLIED BY THE CARNEYS POINT TOWNSHIP SEWER AUTHORITY.

BASEMAP INFORMATION INCLUDING PARCELS, ROADS AND MUNICIPAL BOUNDARY TAKEN FROM THE SALEM COUNTY DATABASE FILE.

"THIS (MAP/PUBLICATION/REPORT) WAS DEVELOPED USING NEW JERSEY DEPARTMENT OF ENVIRONMENTAL PROTECTION GEOGRAPHIC INFORMATION SYSTEM DIGITAL DATA, BUT THIS SECONDARY PRODUCT HAS NOT BEEN VERIFIED BY NJDEP AND IS NOT STATE-AUTHORIZED."

NO.	DATE	REVISION	BY:
1.	12-18-13	REV NJPDES-T1 AREAS & TABLE PER NJDEP COMMENTS	DJP

EXISTIN FACILITIES AND SERVICE AREA - MAP 2

**TOWNSHIP OF OLDMANS**  
SALEM COUNTY  
WASTEWATER MANAGEMENT PLAN  
SALEM COUNTY, NEW JERSEY

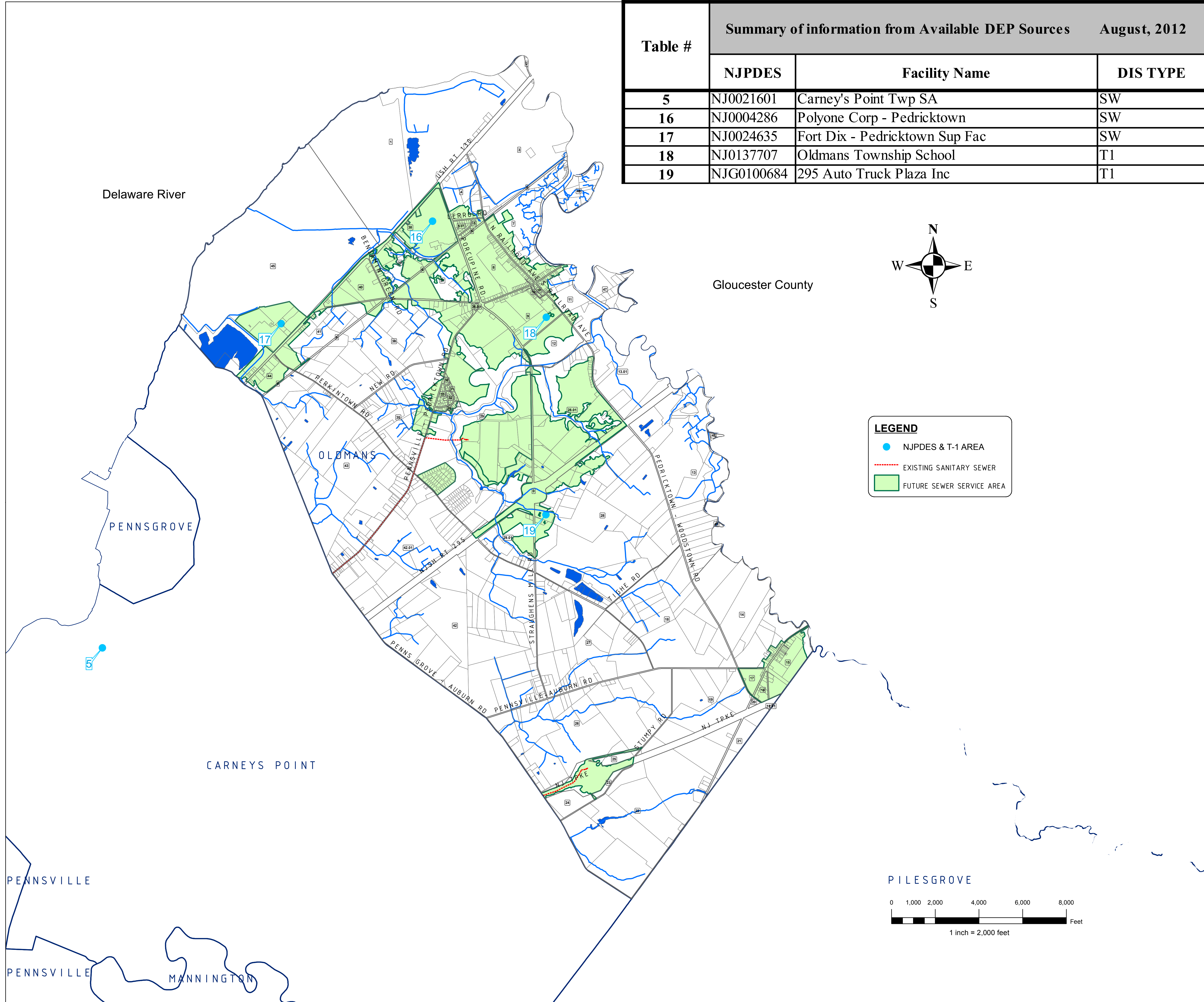
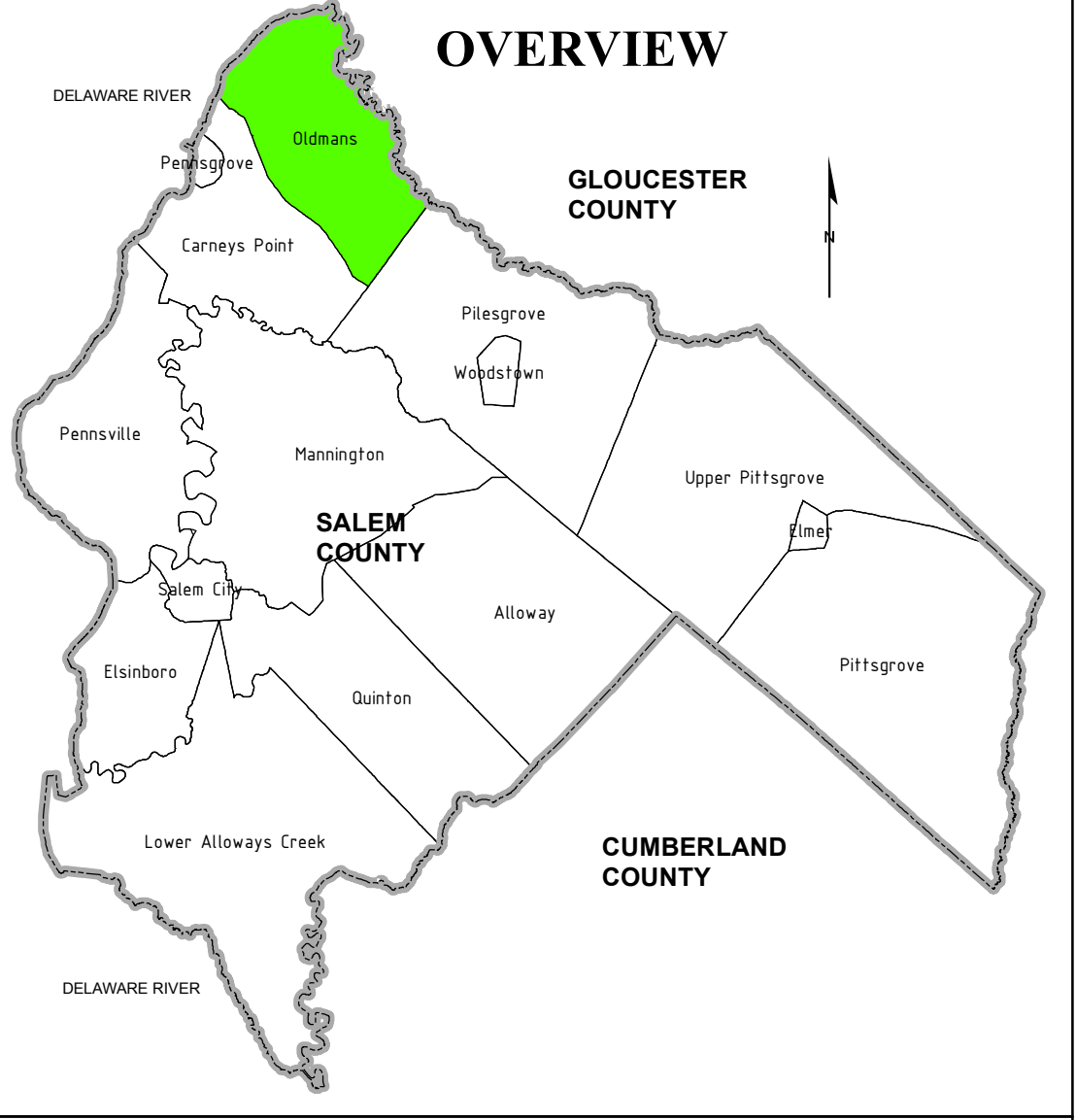


**SICKELS & ASSOCIATES INC.**

SHERWOOD MEWS  
833 KINGS HIGHWAY  
WOODBURY, NEW JERSEY 08096-3110  
NJ CERTIFICATE OF AUTHORIZATION  
No. GA27994900  
856-848-6800  
FAX 848-8520

DRAWN BY: DJP	DATE: 2-24-12	SHEET: 1 of 1
CHECKED BY: DSP	DWG: F-SALEM WMP	FILE: 5363

Table #	Summary of information from Available DEP Sources		August, 2012
	NJPDES	Facility Name	DIS TYPE
5	NJ0021601	Carney's Point Twp SA	SW
16	NJ0004286	Polyone Corp - Pedricktown	SW
17	NJ0024635	Fort Dix - Pedricktown Sup Fac	SW
18	NJ0137707	Oldmans Township School	T1
19	NJG0100684	295 Auto Truck Plaza Inc	T1



**LEGEND**

- NJPDES & T-1 AREA
- EXISTING SANITARY SEWER
- FUTURE SEWER SERVICE AREA

**NOTES:**

"PLEASE NOTE THAT WHERE THE VISUAL DEPICTION OF SSA DOES NOT EXPLICITLY INDICATE THE SPECIFIC SEWER SERVICE AREA ASSOCIATED WITH THE WASTEWATER TREATMENT FACILITIES, THE STATEWIDE DIGITIZED SEWER SERVICE AREA MAPPING DOES. THE PUBLICALLY AVAILABLE SEWER SERVICE AREA MAPPING IS AVAILABLE FOR VIEWING ON NJ GEO-WEB AT [HTTP://WWW.NJ.GOV/DEP/IGIS/GEOWEB/FLASH.HTM](http://www.nj.gov/dep/pigis/geoweb/flash.htm). IT IS ALSO AVAILABLE FOR DOWNLOAD TO USE IN ARCGIS AT [HTTP://WWW.NJ.GOV/DEP/IGIS/STATESHP.HTML](http://www.nj.gov/dep/pigis/stateshp.html).

THE SEWER SERVICE AREA IDENTIFIED ON THIS MAP HAS BEEN REVIEWED BY THE MUNICIPALITY, COUNTY AND DEP. THIS AREA HAS BEEN DEFINED BASED ON ENVIRONMENTAL CONSTRAINTS, LANDSCAPE PROJECT AREA GIS LAYERS, AVAILABLE FROM THE DEPARTMENT TO CLARIFY AREAS OF POTENTIAL SEWER SERVICE. THE TREATMENT FACILITY FOR THE SEWER SERVICE AREA DOES NOT GUARANTEE THAT SUFFICIENT WASTEWATER TREATMENT CAPACITY WILL BE AVAILABLE FOR THE COMPLETE BUILD OUT OF THE AREA.

"INDIVIDUAL SUBSURFACE SEWAGE DISPOSAL SYSTEMS (ISSDS) FOR INDIVIDUAL RESIDENCES CAN ONLY BE CONSTRUCTED IN DEPICED SEWER SERVICE AREAS IF LEGALLY ENFORCEABLE GUARANTEES ARE PROVIDED, BEFORE SUCH CONSTRUCTION, THAT USE OF SUCH SYSTEMS WILL BE DISCONTINUED WHEN THE DEPICED SEWER SERVICE BECOMES AVAILABLE. THIS APPLIES TO ISSDS THAT REQUIRE CERTIFICATION FROM THE DEPARTMENT UNDER THE REALTY IMPROVEMENT SEWERAGE AND FACILITIES ACT (N.J.S.A. 58:11-23) OR INDIVIDUAL TREATMENT WORKS APPROVAL OR NEW JERSEY POLLUTANT DISCHARGE ELIMINATION SYSTEM PERMITS (UNDER N.J.A.C. 7:14A). IT ALSO APPLIES TO ISSDS WHICH REQUIRE ONLY LOCAL APPROVALS. COMPLIANCE WITH THE CONNECTION REQUIREMENT HAS BEEN DEMONSTRATED ADOPTION OF CARNEYS POINT TOWNSHIP SEWER AUTHORITY ORDINANCE (INSERT ORDINANCE #).

"LOCATIONS OF FUTURE PUMP STATIONS, MAJOR INTERCEPTORS, AND TRUNK SEWERS ARE BEING PROVIDED FOR GENERAL INFORMATION ONLY AND WILL NOT SERVE AS THE BASIS FOR ANY FUTURE CONSISTENCY DETERMINATIONS OR PERMIT REVIEWS UNLESS THE PUMP STATION, MAJOR INTERCEPTOR OR TRUNK SEWER IS PART OF A STATE OR FEDERALLY FUNDED PROJECT."

"PRE-EXISTING GRANT CONDITIONS AND REQUIREMENTS (FROM FEDERAL AND STATE GRANTS OR LOANS FOR SEWERAGE FACILITIES) WHICH PROVIDE FOR RESTRICTION OF SEWER SERVICE TO ENVIRONMENTALLY SENSITIVE AREAS, ARE UNAFFECTED BY ADOPTION OF THIS WMP AND COMPLIANCE IS REQUIRED. PLEASE SEE MUNICIPAL WMP CHAPTERS FOR THE EXISTENCE OF ANY APPLICABLE ENVIRONMENTALLY SENSITIVE AREAS IN WHICH FEDERAL 201 GRANT LIMITATIONS PROHIBIT THE EXTENSION OF SEWER SERVICE."

"ALL EXISTING, NEW OR EXPANDED INDUSTRIAL PRETREATMENT FACILITIES REQUIRING SIGNIFICANT INDIRECT USER (SIU) PERMITS AND/OR TREATMENT WORKS APPROVALS, AND WHICH ARE LOCATED WITHIN THE SPECIFIED SEWER SERVICE AREA, IS DEEMED TO BE CONSISTENT."

IN ADDITION TO THE TEXT FOUND IN THE WMP TEMPLATE DOCUMENT THE FOLLOWING IS NEEDED: "PROPOSED DEVELOPMENTS TYING INTO EXISTING AND PROPOSED SEWER SERVICE AREAS WHICH REQUIRE COASTAL PERMITS MUST DEMONSTRATE COMPLIANCE WITH ALL APPLICABLE SECTIONS OF THE COASTAL ZONE MANAGEMENT RULES INCLUDING, BUT NOT LIMITED TO, WETLANDS (N.J.A.C. 7:7E-3.27), WETLANDS BUFFERS (N.J.A.C. 7:7E-3.38), SECONDARY IMPACTS (N.J.A.C. 7:7E-6.3), PUBLIC FACILITY USE POLICIES (N.J.A.C. 7:7E-7.6), WATER QUALITY (N.J.A.C. 7:7E-8.4), GROUND WATER USE (N.J.A.C. 7:7E-9.6) AND THE POLICIES UNDER GENERAL LAND AREAS RULES, SUBCHAPTERS 5, 5A AND 5B"

SANITARY SEWER INFORMATION INCLUDING MANHOLES, PIPING, PUMPSTATIONS AND TREATMENT PLANT TAKEN FROM A DRAWING FILE SUPPLIED BY THE CARNEYS POINT TOWNSHIP SEWER AUTHORITY.

BASEMAP INFORMATION INCLUDING PARCELS, ROADS AND MUNICIPAL BOUNDARY TAKEN FROM THE SALEM COUNTY DATABASE FILE.

"THIS (MAP/PUBLICATION/REPORT) WAS DEVELOPED USING NEW JERSEY DEPARTMENT OF ENVIRONMENTAL PROTECTION GEOGRAPHIC INFORMATION SYSTEM DIGITAL DATA, BUT THIS SECONDARY PRODUCT HAS NOT BEEN VERIFIED BY NJDEP AND IS NOT STATE-AUTHORIZED."

NO.	DATE	REVISION	BY:
3	9-2-15	ADDED NOTE PER NJDEP COMMENTS	DJP
2	7-15-14	REV PER NJDEP COMMENTS	DJP
1	12-18-13	REV NJPDES-T1 AREAS & TABLE PER NJDEP COMMENTS	DJP

REVISIONS

**FUTURE SEWER SERVICE AREA - MAP 3**

**TOWNSHIP OF OLDMANS**  
SALEM COUNTY  
WASTEWATER MANAGEMENT PLAN  
SALEM COUNTY, NEW JERSEY



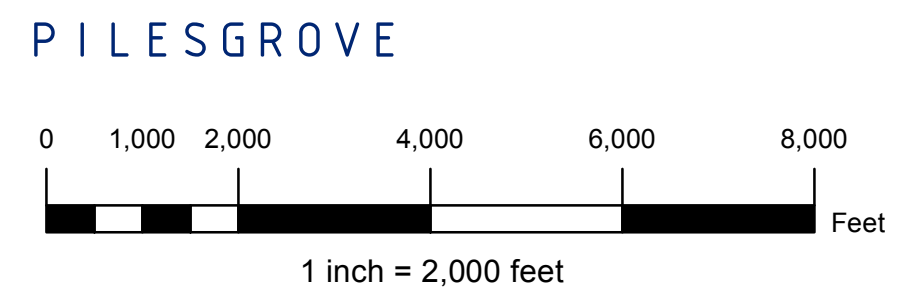
**SALEM COUNTY DEPARTMENT OF PLANNING AND AGRICULTURE**

110 FIFTH STREET  
SALEM, NEW JERSEY

**SICKELS & ASSOCIATES, INC.**

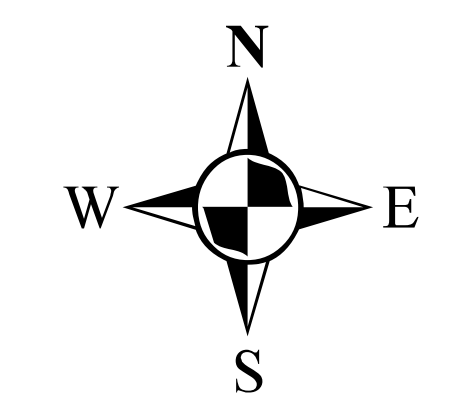
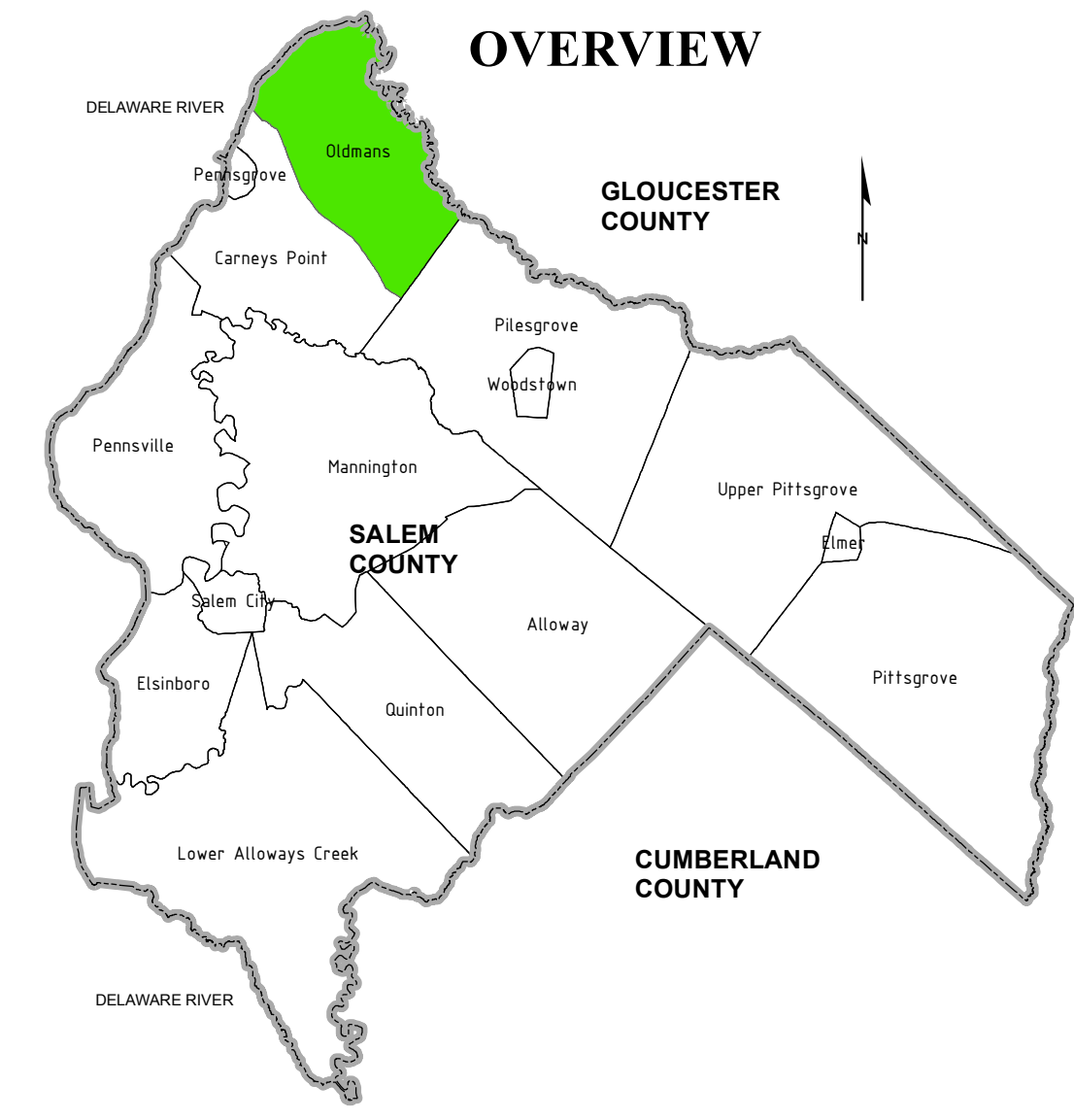
SHERWOOD MEWS  
833 KINGS HIGHWAY  
WOODBURY, NEW JERSEY 08096-3110  
NJ CERTIFICATE OF AUTHORIZATION  
No. GA27994960  
856-848-6800  
FAX 848-8520

DRAWN BY: DJP      DATE: 2-27-12      SHEET: 1 of 1  
CHECKED BY: DSP      DWG: F-SALEM WMP      FILE: 5363



ZONING SUMMARY TABLE

ZONE	ZONE TITLE	MINIMUM LOT AREA	MINIMUM LOT FRONTAGE	MINIMUM LOT WIDTH	MINIMUM LOT DEPTH	MINIMUM FRONT YARD SETBACK	MINIMUM SIDE YARD SETBACK	MINIMUM REAR YARD SETBACK	MAXIMUM BUILDING HEIGHT	MAXIMUM BUILDING COVERAGE
AR	AGRICULTURAL RESIDENTIAL	2 ACRES	200'	200'	225'	75'	80/30' MIN	75'		8%
R	RESIDENTIAL	1 ACRE	150'	150'	200'	50'	30'	50'		10%
VR	VILLAGE RESIDENTIAL	10,000 SF	100'	100'	100'	30'	15'	25'		40%
VC	VILLAGE COMMERCIAL	10,000 SF	100'	100'	100'	30'	15'	25'		40%
C	COMMERCIAL	INDIVIDUAL	1 ACRE	125'	125'	200'	50'	25'	40'	25%
		SHOPPING CENTER	8 ACRES	300'	300'	800'	75'	50'	100'	25%
I	INDUSTRIAL	INDIVIDUAL	3 ACRES	300'	300'	300'	125'	75'	75'	30%
		INDUSTRIAL PARK	2 ACRES	250'	250'	250'	100'	50'	50'	30%
CI	COMMERCIAL/INDUSTRIAL	INDIVIDUAL	3 ACRES	300'	300'	300'	125'	75'	75'	75%
		INDUSTRIAL PARK	2 ACRES	250'	250'	250'	100'	50'	50'	75%
IPRA	INDUSTRIAL PARK REDEVELOPMENT AREA	3 ACRES	100'	300'	300'	125'	75'	75'	50'	50%
P	PUBLIC	2 ACRES	100'	250'	250'	100'	50'	50'		50%



**LEGEND**

- AR - AGRICULTURAL RESIDENTIAL
- C - COMMERCIAL
- CI - COMMERCIAL INDUSTRIAL
- I - INDUSTRIAL
- IPRA - INDUSTRIAL PARK REDEVELOPMENT AREA
- P - PUBLIC
- R - RESIDENTIAL
- VC - VILLAGE
- VR - VILLAGE RESIDENTIAL

NOTES:

ZONING MAP TAKEN FROM SALEM COUNTY DATABASE FILE DATED 12-8-10. ZONING MAP DATED 2004. ORDINANCE INFORMATION TAKEN FROM THE TOWNSHIP OF OLDMANS ORDINANCE DATED 7-2-08.

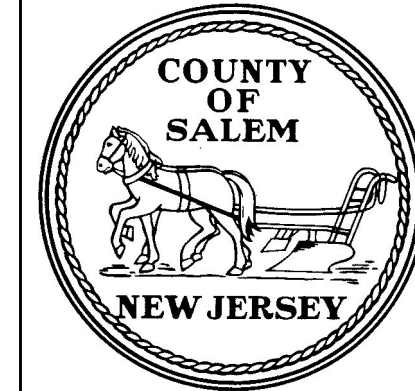
BASEMAP INFORMATION INCLUDING PARCELS, ROADS AND MUNICIPAL BOUNDARY TAKEN FROM THE SALEM COUNTY DATABASE FILE.

"THIS (MAP/PUBLICATION/REPORT) WAS DEVELOPED USING NEW JERSEY DEPARTMENT OF ENVIRONMENTAL PROTECTION GEOGRAPHIC INFORMATION SYSTEM DIGITAL DATA, BUT THIS SECONDARY PRODUCT HAS NOT BEEN VERIFIED BY NJDEP AND IS NOT STATE-AUTHORIZED."

NO.	DATE	REVISION	BY:

ZONING - MAP 4

**TOWNSHIP OF OLDMANS**  
SALEM COUNTY  
WASTEWATER MANAGEMENT PLAN  
SALEM COUNTY, NEW JERSEY

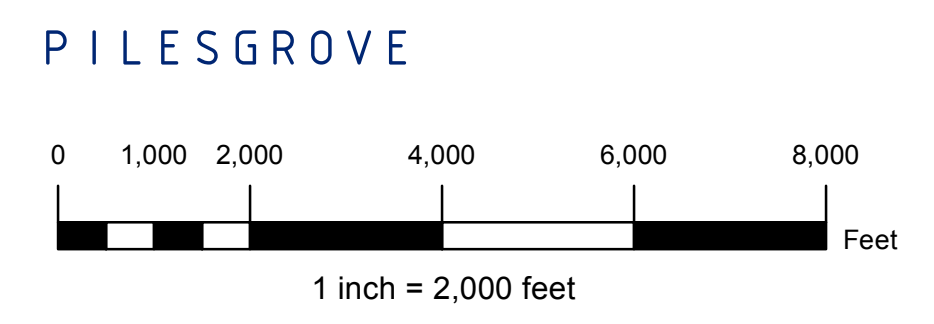
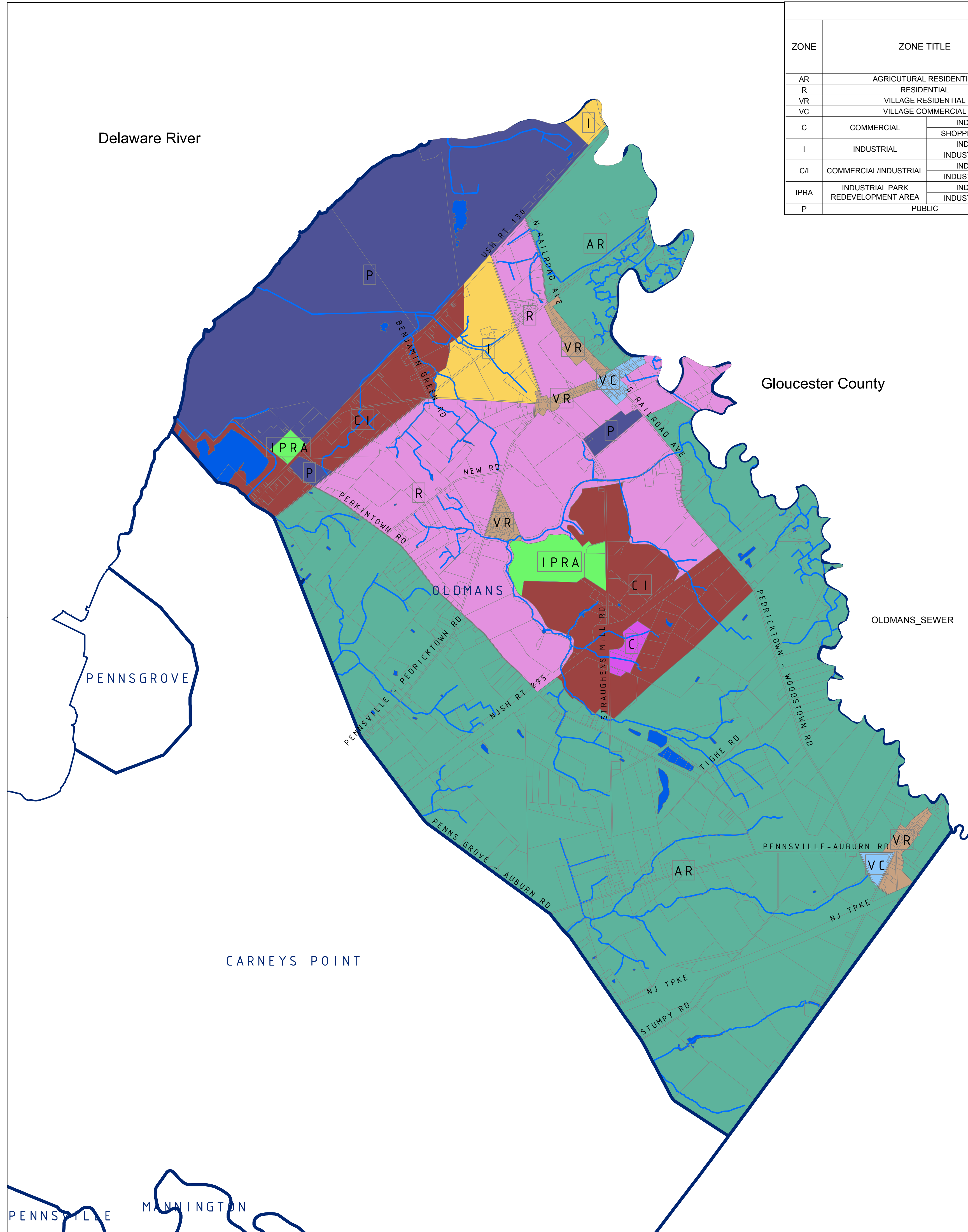


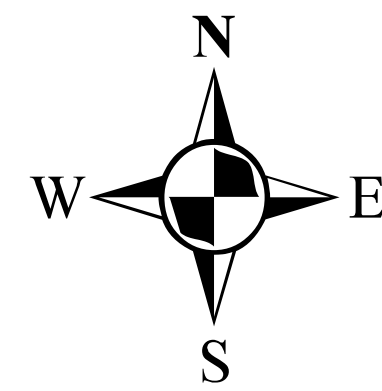
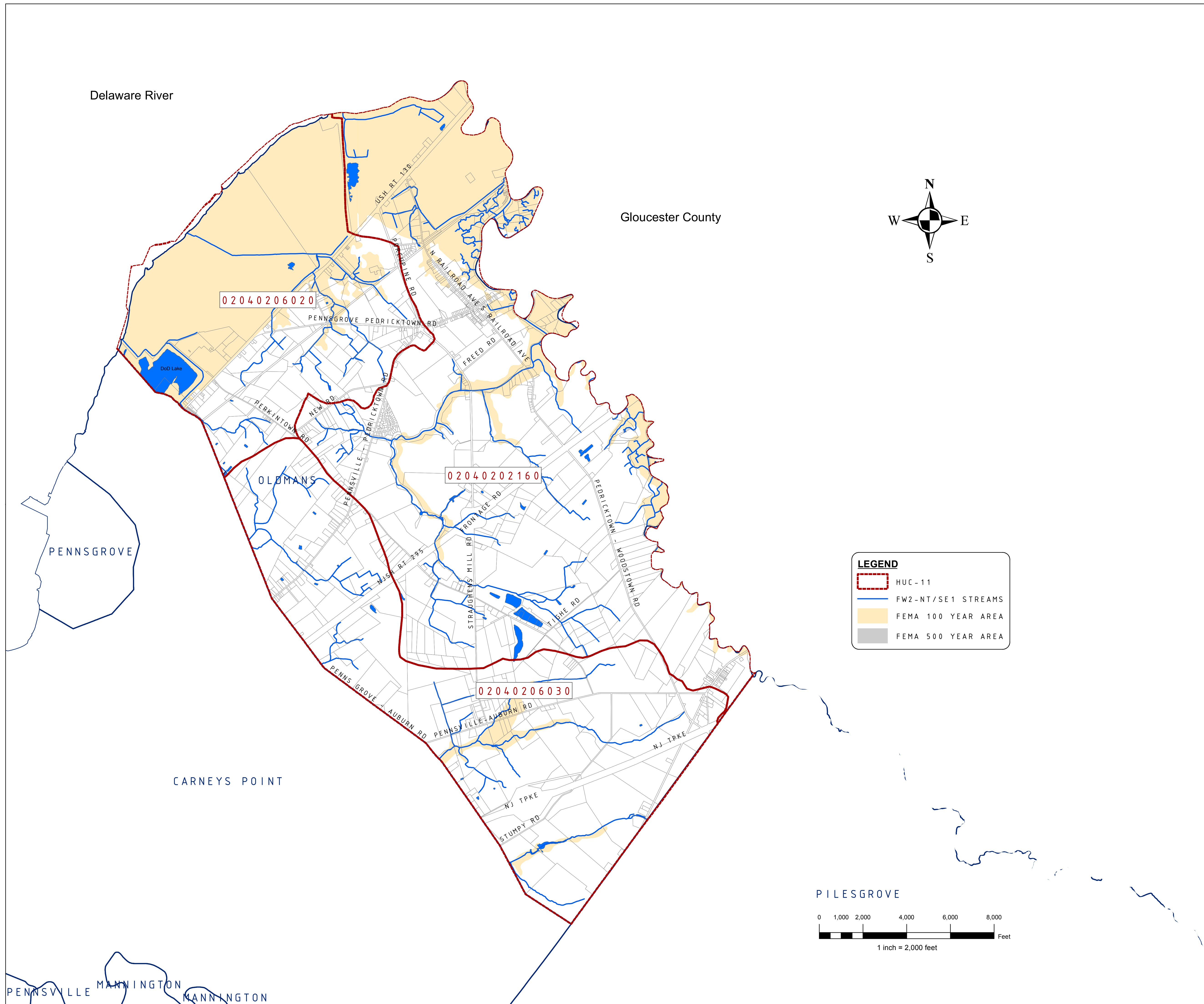
SALEM COUNTY DEPARTMENT OF PLANNING AND AGRICULTURE  
110 FIFTH STREET  
SALEM, NEW JERSEY

**SICKELS & ASSOCIATES, INC.**

SHERWOOD MEWS  
833 KINGS HIGHWAY  
WOODBURY, NEW JERSEY 08096-3110  
NJ CERTIFICATE OF AUTHORIZATION  
No. GA27994903  
856-848-6800  
FAX 848-8520

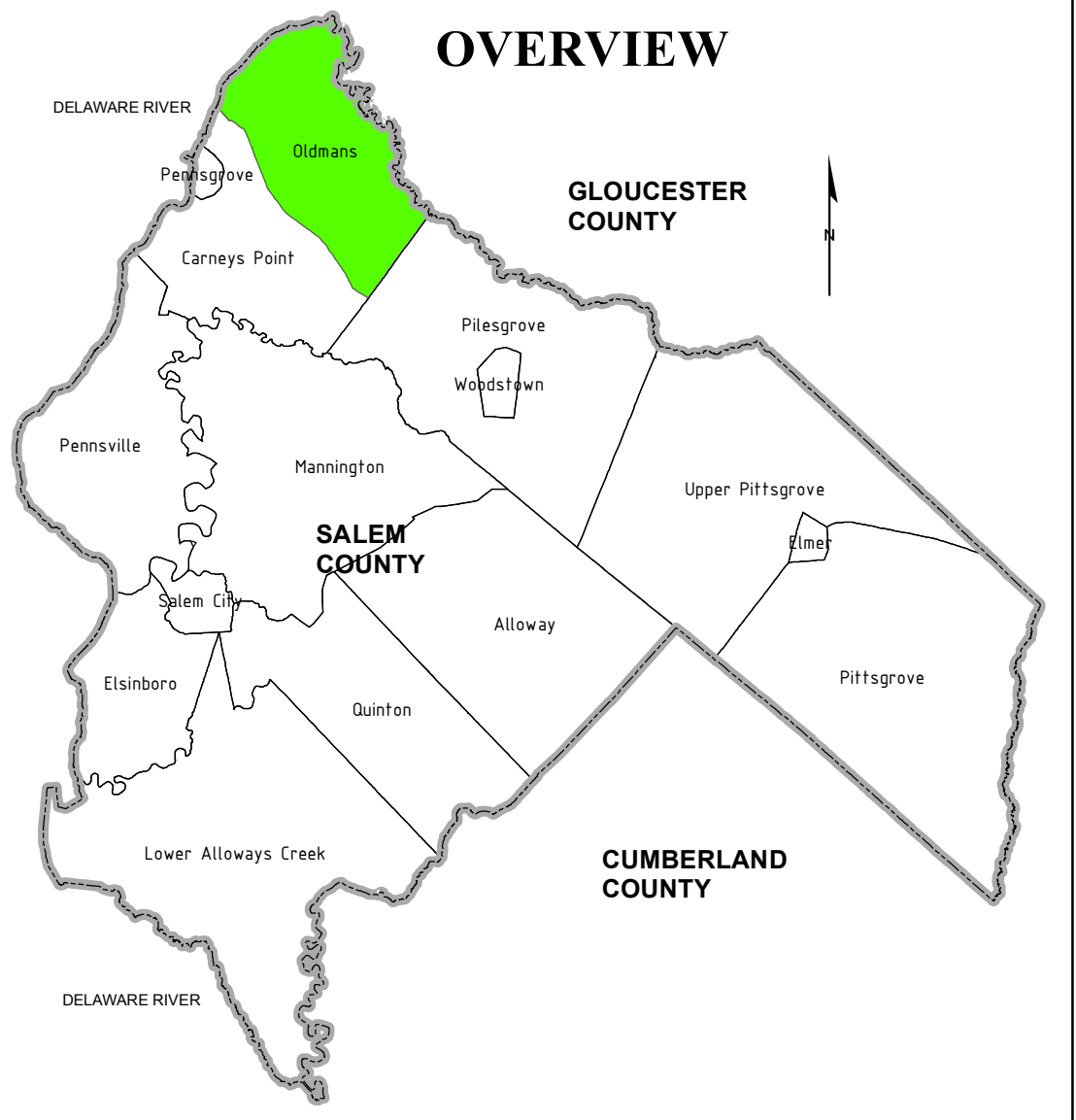
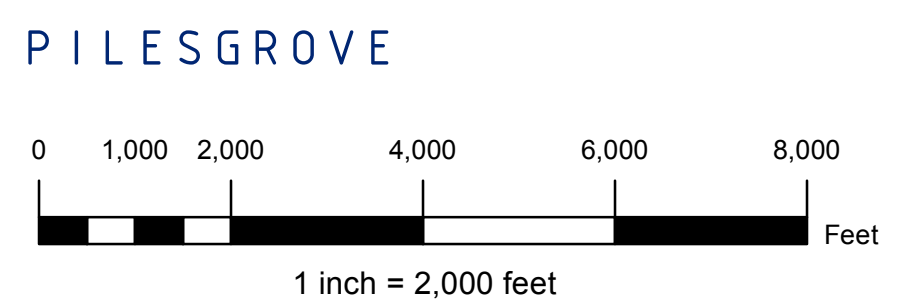
DRAWN BY: DJP	DATE: 2-27-12	SHEET: 1 of 1
CHECKED BY: DSP	DWG: F-SALEM WMP	FILE: 5363





**LEGEND**

- HUC - 11
- FW2 - NT/SE1 STREAMS
- FEMA 100 YEAR AREA
- FEMA 500 YEAR AREA



**NOTES:**

"DEVELOPMENT IN AREAS MAPPED AS WETLANDS, FLOOD PRONE AREAS, SUITABLE HABITAT FOR ENDANGERED AND THREATENED SPECIES AS IDENTIFIED ON THE DEPARTMENT'S LANDSCAPE MAPS OF HABITAT FOR ENDANGERED, THREATENED AND OTHER PRIORITY WILDLIFE AS RANK 3.4 AND 5, NATURAL HERITAGE PRIORITY SITES, RIPARIAN ZONES, STEEP SLOPES, OR DESIGNATED RIVER AREAS MAY BE SUBJECT TO SPECIAL REGULATION UNDER FEDERAL OR STATE STATUTES OR RULES, AND THAT INTERESTED PERSONS SHOULD CHECK WITH THE DEPARTMENT FOR THE LATEST INFORMATION. DEPICTION OF ENVIRONMENTAL FEATURES SHALL BE FOR GENERAL INFORMATION PURPOSES ONLY, AND SHALL NOT BE CONSTRUED TO DEFINE THE LEGAL GEOGRAPHIC JURISDICTION OF SUCH STATUTES OR RULES"

BASEMAP INFORMATION INCLUDING PARCELS, ROADS AND MUNICIPAL BOUNDARY TAKEN FROM THE SALEM COUNTY DATABASE FILE.

"THIS (MAP/PUBLICATION/REPORT) WAS DEVELOPED USING NEW JERSEY DEPARTMENT OF ENVIRONMENTAL PROTECTION GEOGRAPHIC INFORMATION SYSTEM DIGITAL DATA, BUT THIS SECONDARY PRODUCT HAS NOT BEEN VERIFIED BY NJDEP AND IS NOT STATE-AUTHORIZED."

NO.	DATE	REVISION	BY:
REVISIONS			

ENVIRONMENTAL FEATURES - MAP 5A CATEGORY ONE STREAMS, HUC 11, FEMA AREAS

**TOWNSHIP OF OLDMANS**

SALEM COUNTY  
WASTEWATER MANAGEMENT PLAN  
SALEM COUNTY, NEW JERSEY

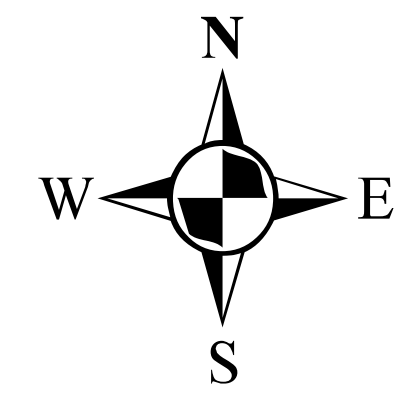
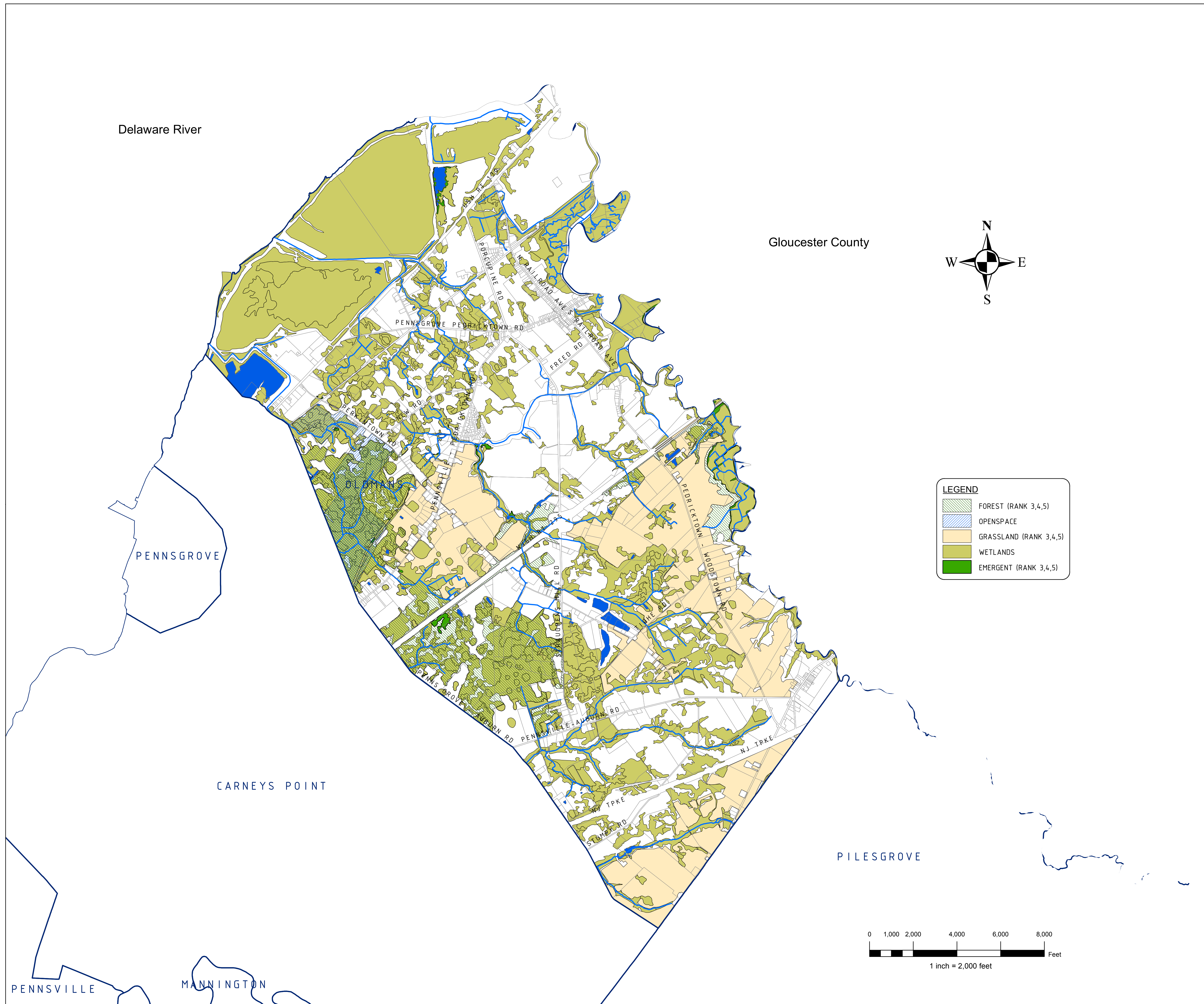
SALEM COUNTY DEPARTMENT OF PLANNING AND AGRICULTURE  
110 FIFTH STREET  
SALEM, NEW JERSEY

**SICKELS & ASSOCIATES, INC.**

SHERWOOD MEWS  
833 KINGS HIGHWAY  
WOODBURY, NEW JERSEY 08096-3110  
NJ CERTIFICATE OF AUTHORIZATION  
No. GA27994960

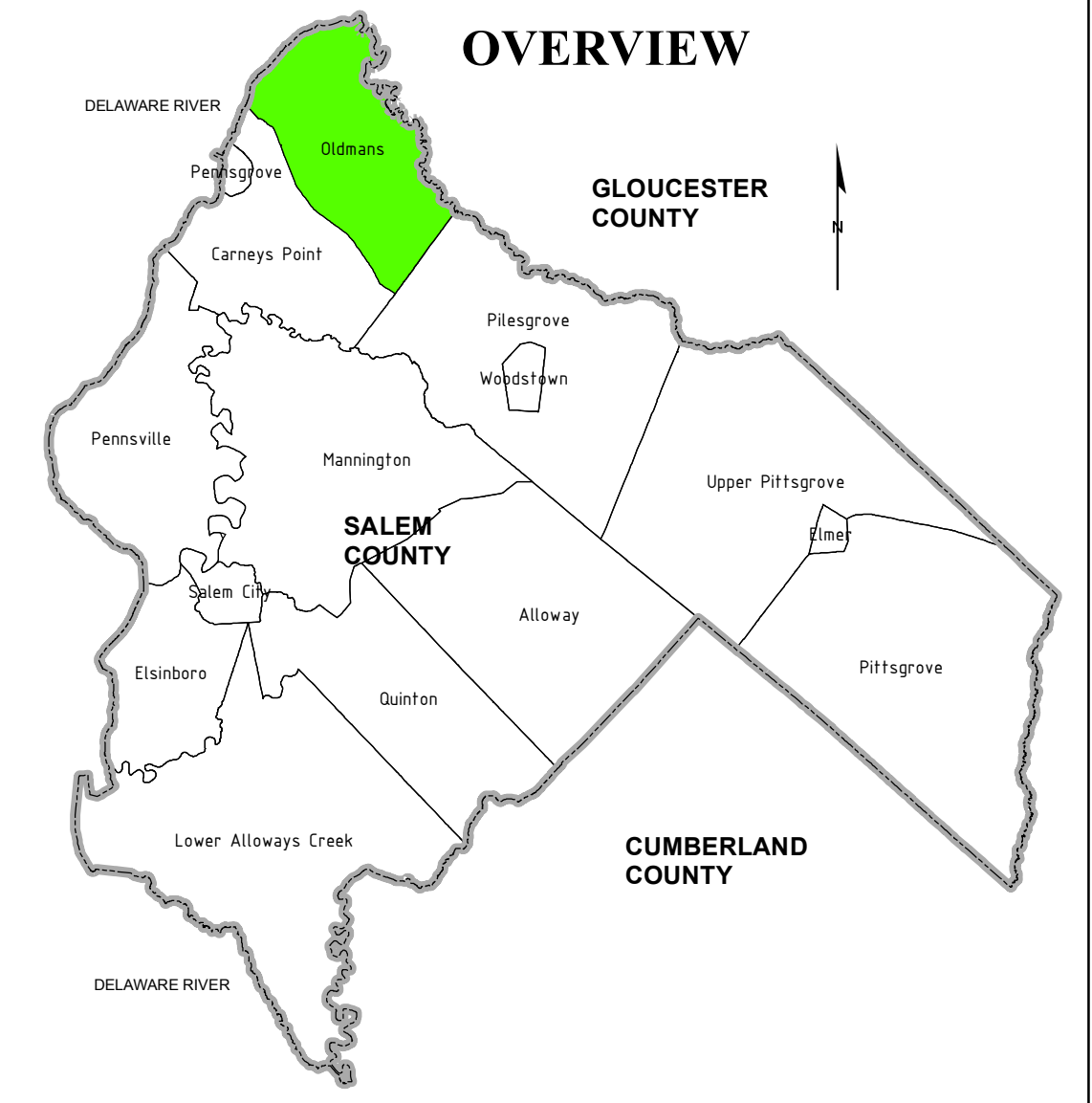
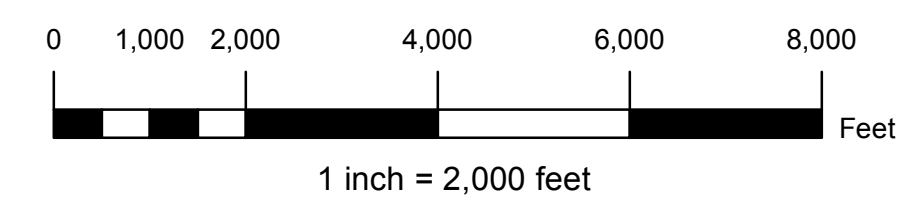
856-848-6800  
FAX 848-8520

DRAWN BY: DJP	DATE: 2-24-12	SHEET: 1 of 1
CHECKED BY: DSP	DWG: F-SALEM WMP	FILE: 5363



**LEGEND**

- FOREST (RANK 3,4,5)
- OPENSACE
- GRASSLAND (RANK 3,4,5)
- WETLANDS
- EMERGENT (RANK 3,4,5)



**NOTES:**

"DEVELOPMENT IN AREAS MAPPED AS WETLANDS, FLOOD PRONE AREAS, SUITABLE HABITAT FOR ENDANGERED AND THREATENED SPECIES AS IDENTIFIED ON THE DEPARTMENT'S LANDSCAPE MAPS OF HABITAT FOR ENDANGERED, THREATENED AND OTHER PRIORITY WILDLIFE AS RANK 3.4 AND 5, NATURAL HERITAGE PRIORITY SITES, RIPARIAN ZONES, STEEP SLOPES, OR DESIGNATED RIVER AREAS MAY BE SUBJECT TO SPECIAL REGULATION UNDER FEDERAL OR STATE STATUTES OR RULES, AND THAT INTERESTED PERSONS SHOULD CHECK WITH THE DEPARTMENT FOR THE LATEST INFORMATION. DEPICTION OF ENVIRONMENTAL FEATURES SHALL BE FOR GENERAL INFORMATION PURPOSES ONLY, AND SHALL NOT BE CONSTRUED TO DEFINE THE LEGAL GEOGRAPHIC JURISDICTION OF SUCH STATUTES OR RULES"

BASEMAP INFORMATION INCLUDING PARCELS, ROADS AND MUNICIPAL BOUNDARY TAKEN FROM THE SALEM COUNTY DATABASE FILE.

"THIS (MAP/PUBLICATION/REPORT) WAS DEVELOPED USING NEW JERSEY DEPARTMENT OF ENVIRONMENTAL PROTECTION GEOGRAPHIC INFORMATION SYSTEM DIGITAL DATA, BUT THIS SECONDARY PRODUCT HAS NOT BEEN VERIFIED BY NJDEP AND IS NOT STATE-AUTHORIZED."

NO.	DATE	REVISION	BY:

**ENVIRONMENTAL FEATURES - MAP 5B  
GRASSLANDS, EMERGENT, FORESTED,  
WETLANDS AND OPEN SPACE AREAS  
TOWNSHIP OF OLDMANS  
SALEM COUNTY  
WASTEWATER MANAGEMENT PLAN  
SALEM COUNTY, NEW JERSEY**

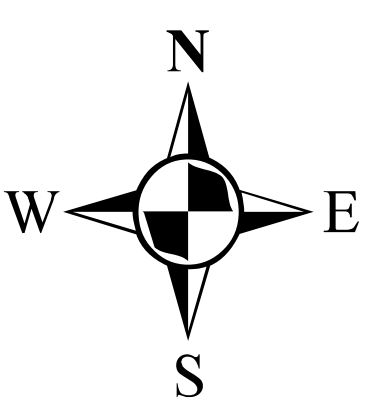
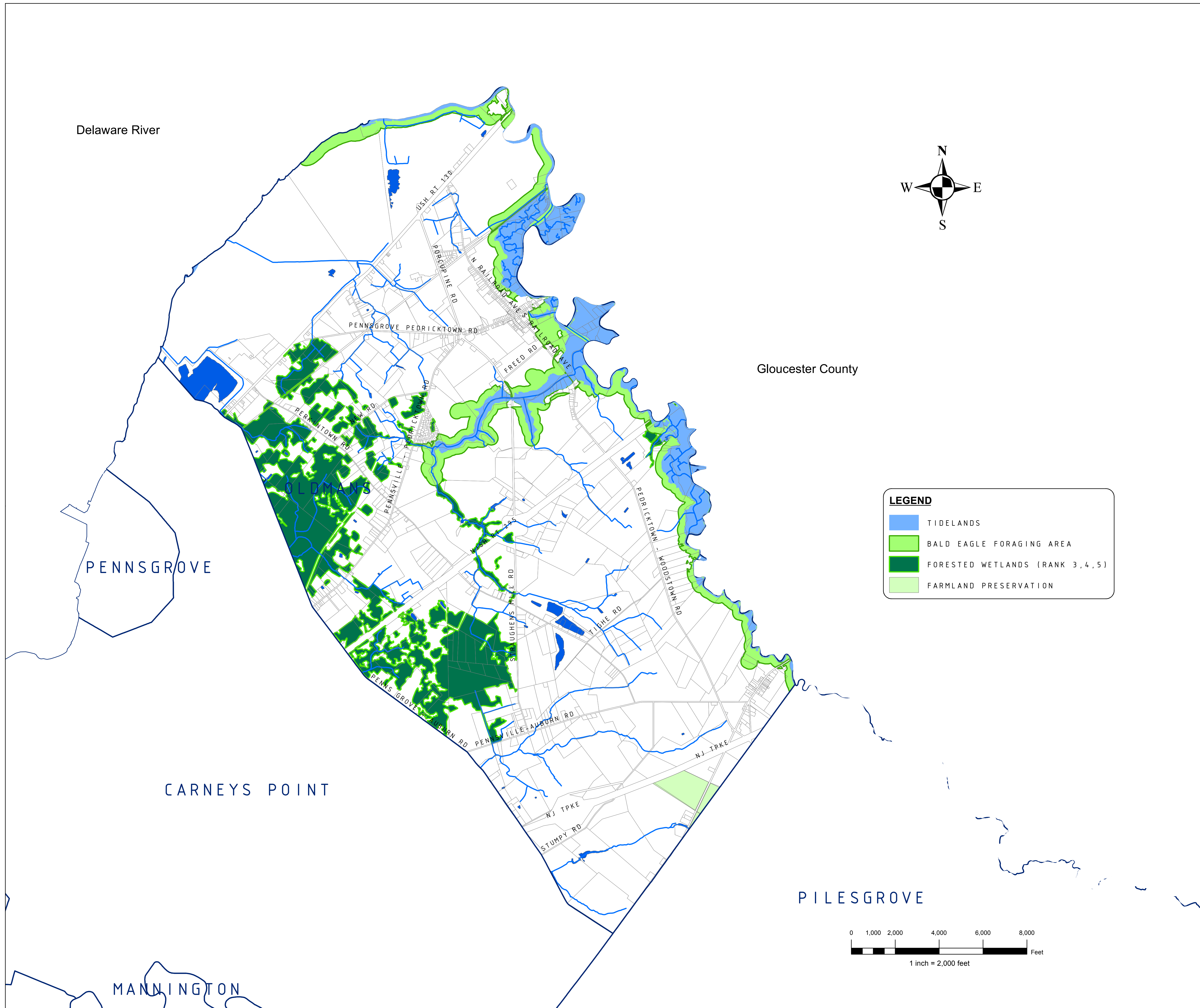


**SALEM COUNTY DEPARTMENT OF  
PLANNING AND AGRICULTURE**  
110 FIFTH STREET  
SALEM, NEW JERSEY

**SICKELS & ASSOCIATES, INC.**

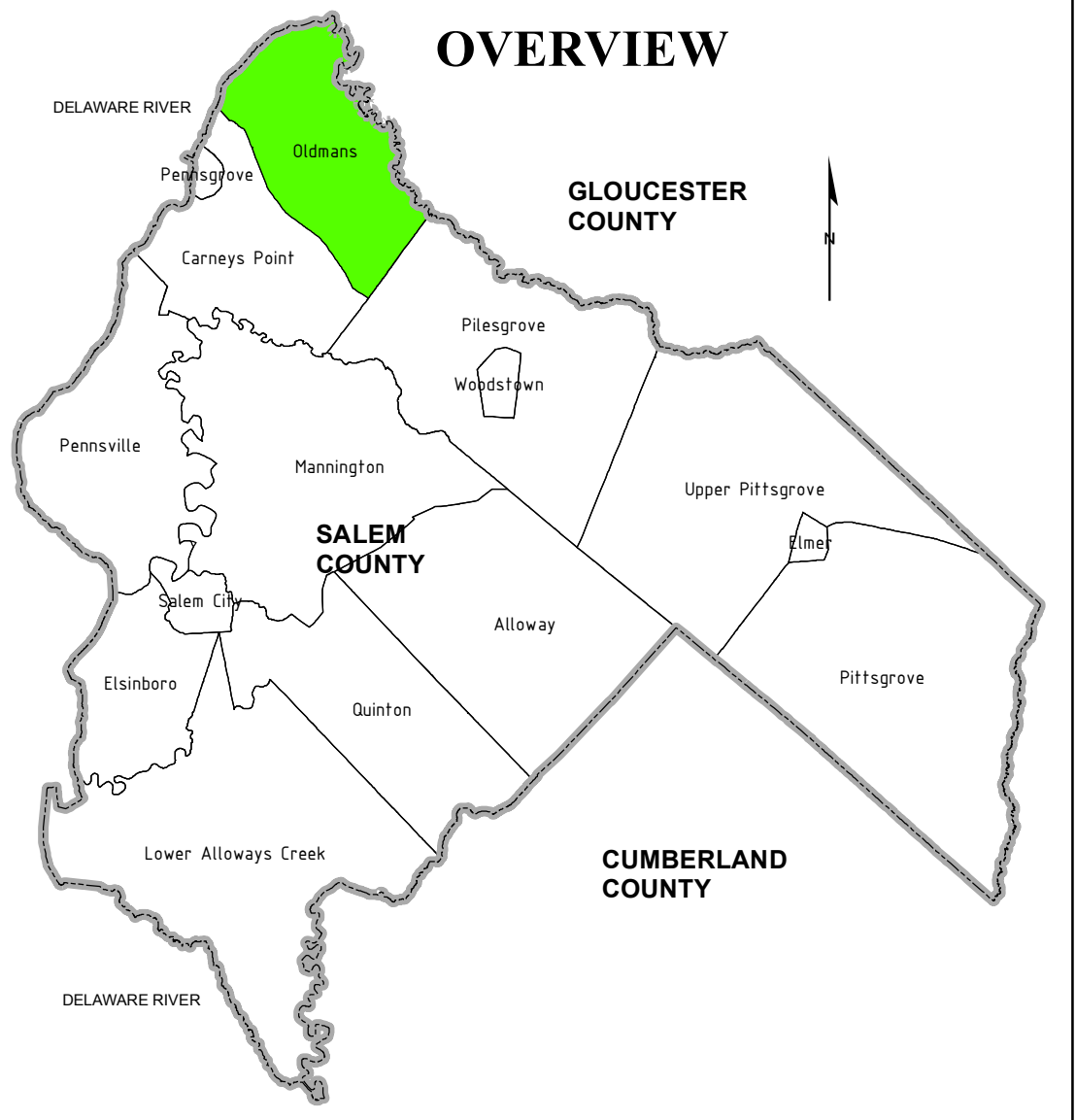
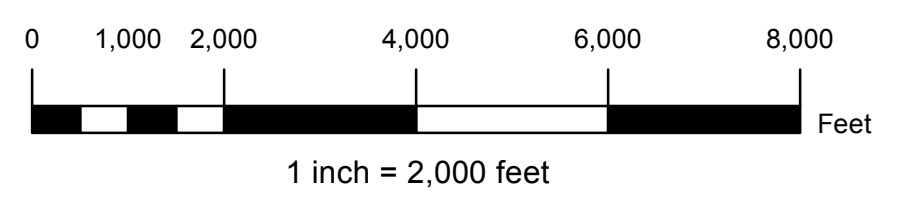
SHERWOOD MEWS  
833 KINGS HIGHWAY  
WOODBURY, NEW JERSEY 08096-3110  
NJ CERTIFICATE OF AUTHORIZATION  
No. GA27994900 856-848-6800  
FAX 848-8520

DRAWN BY: DJP	DATE: 2-24-12	SHEET: 1 of 1
CHECKED BY: DSP	DWG: F-SALEM WMP	FILE: 5363



**LEGEND**

- TIDELANDS
- BALD EAGLE FORAGING AREA
- FORESTED WETLANDS (RANK 3, 4, 5)
- FARMLAND PRESERVATION



**NOTES:**

"DEVELOPMENT IN AREAS MAPPED AS WETLANDS, FLOOD PRONE AREAS, SUITABLE HABITAT FOR ENDANGERED AND THREATENED SPECIES AS IDENTIFIED ON THE DEPARTMENT'S LANDSCAPE MAPS OF HABITAT FOR ENDANGERED, THREATENED AND OTHER PRIORITY WILDLIFE AS RANK 3, 4, AND 5, NATURAL HERITAGE PRIORITY SITES, RIPARIAN ZONES, STEEP SLOPES, OR DESIGNATED RIVER AREAS MAY BE SUBJECT TO SPECIAL REGULATION UNDER FEDERAL OR STATE STATUTES OR RULES, AND THAT INTERESTED PERSONS SHOULD CHECK WITH THE DEPARTMENT FOR THE LATEST INFORMATION. DEPICTION OF ENVIRONMENTAL FEATURES SHALL BE FOR GENERAL INFORMATION PURPOSES ONLY, AND SHALL NOT BE CONSTRUED TO DEFINE THE LEGAL GEOGRAPHIC JURISDICTION OF SUCH STATUTES OR RULES"

BASEMAP INFORMATION INCLUDING PARCELS, ROADS AND MUNICIPAL BOUNDARY TAKEN FROM THE SALEM COUNTY DATABASE FILE.

"THIS (MAP/PUBLICATION/REPORT) WAS DEVELOPED USING NEW JERSEY DEPARTMENT OF ENVIRONMENTAL PROTECTION GEOGRAPHIC INFORMATION SYSTEM DIGITAL DATA, BUT THIS SECONDARY PRODUCT HAS NOT BEEN VERIFIED BY NJDEP AND IS NOT STATE-AUTHORIZED."

NO.	DATE	REVISION	BY:

**ENVIRONMENTAL FEATURES - MAP 5C BALD EAGLE FORAGING, FORESTED WETLANDS, TIDELANDS, FARMLAND PRESERVATION AREAS**  
**TOWNSHIP OF OLDMANS**  
 SALEM COUNTY  
 WASTEWATER MANAGEMENT PLAN  
 SALEM COUNTY, NEW JERSEY

**SALEM COUNTY DEPARTMENT OF PLANNING AND AGRICULTURE**  
 110 FIFTH STREET  
 SALEM, NEW JERSEY

**SICKELS & ASSOCIATES, INC.**

SHERWOOD MEWS  
 833 KINGS HIGHWAY  
 WOODBURY, NEW JERSEY 08096-3110  
 NJ CERTIFICATE OF AUTHORIZATION  
 No. GA27994900 856-848-6800  
 FAX 848-8520

DRAWN BY: DJP	DATE: 2-24-12	SHEET: 1 of 1
CHECKED BY: DSP	DWG: F-SALEM WMP	FILE: 5363