

DEPARTMENT OF ENVIRONMENTAL PROTECTION  
OFFICE OF WATER RESOURCES MANAGEMENT COORDINATION

REVISION TO THE LOWER RARITAN/MIDDLESEX COUNTY WATER  
QUALITY MANAGEMENT PLAN

TAKE NOTICE that on **MAR 28 2016**, pursuant to the provisions of the Water Quality Planning Act, N.J.S.A. 58:11A-1 *et seq.*, and the Statewide Water Quality Management Planning rules, N.J.A.C. 7:15-3.5, a revision (Program Interest No.: 435463; Activity No.: REV150002) to the Lower Raritan/Middlesex County Water Quality Management Plan (WQMP) was adopted by the Department. This revision modifies the Middlesex County Future Wastewater Service Area (FWSA) Map. The revision, entitled "Old Stage Road Subdivision", submitted on behalf of K. Hovnanian Homes, expands the Middlesex County Utilities Authority (MCUA) sewer service area (SSA) by 8 acres to allow for the construction of 6 single family homes. The project site is located in East Brunswick Township on a portion of Block 573, Lot 3.01 at the intersection of Old Stage Road and Kingswood Boulevard. The entire proposed development is for 12 single family homes, however, 6 of these homes are in the presently adopted SSA and are not the subject of this revision. The Department's review determined that the project site is located within the Helmetta Natural Heritage Priority Site, which includes both uplands and wetland rare plant habits. The Department's Office of Natural Lands Management (ONLM) has designated Natural Heritage Priority Sites for locations that have documented rare plant species and rare ecological communities. To ensure that no adverse impact would occur to these species, the Department recommended that rare plant species survey of the site be conducted in accordance with survey protocols prepared by ONLM. In addition, a Request for Natural Heritage Data Services from ONLM was required in advance of the survey to determine if occurrence records for any endangered plant species or species of concern exist within the vicinity of the proposed development area.

On October 16, 2015 the Department received the Rare and Endangered Plant Survey Results prepared by Dubois Environmental Consultants LLC (DEC). ONLM reviewed the survey results and while concurring with DEC's surveys' findings that none of the target species were located during the surveys, they did discover a population of Purple Giant Hyssop (*Agastache scrophulariifolia*) which is tracked by the Natural Heritage Program. The species is rare in New Jersey and there are a total of 18 documented locations in the state. It was later determined that this plant had, in fact, been planted there by the property owners which therefore reduced the significance of the occurrence. This is due to the fact that artificially planted species do not have the same level of regulatory significance as naturally occurring plants. The Department will require, however, as part of this revision that the Purple Giant Hyssop plants be relocated to a portion of the site where they will not be subject to any future disturbance.

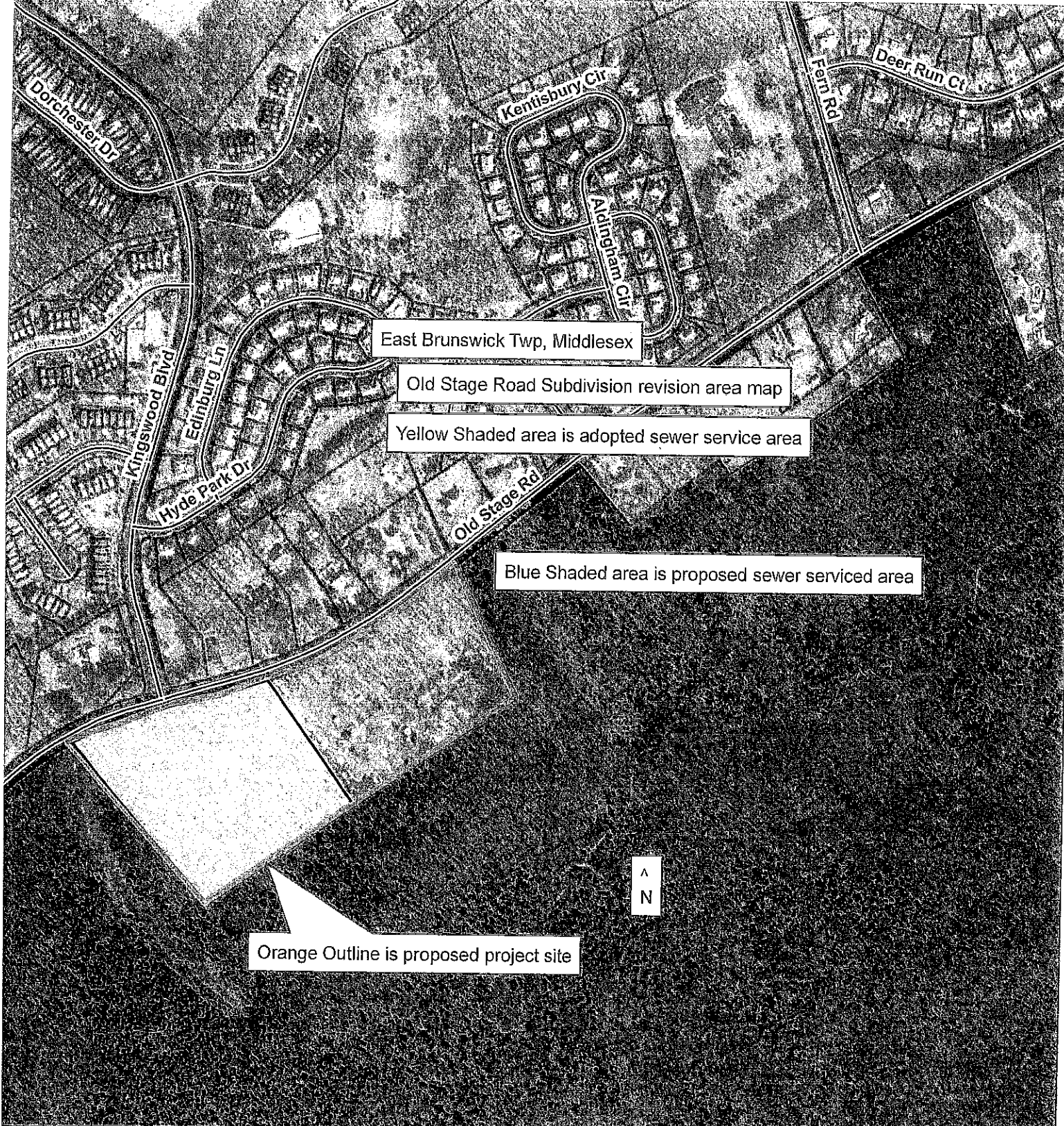
This revision is being adopted in accordance with N.J.A.C.7:15-3.5(b)4v, which allows revisions when the Department has determined that the proposed project activity qualifies as a revision for the expansion of a future sewer service area to contiguous lots where the expansion involves less than 100 areas and contributes less than 8,000 gpd of additional wastewater and that a significantly new pattern of sewer development or incentive for additional revisions or amendments to open new areas to sewer development will not be created.



\_\_\_\_\_  
Colleen Kokas, Director  
Office of WRM Coordination  
Department of Environmental Protection



\_\_\_\_\_  
Date



East Brunswick Twp, Middlesex

Old Stage Road Subdivision revision area map

Yellow Shaded area is adopted sewer service area

Blue Shaded area is proposed sewer serviced area

Orange Outline is proposed project site

