

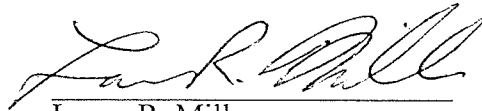
DEPARTMENT OF ENVIRONMENTAL PROTECTION
DIVISION OF WATERSHED MANAGEMENT

AMENDMENT TO THE MONMOUTH COUNTY WATER QUALITY MANAGEMENT
PLAN

Public Notice

Take notice that on **SEP 02 1999**, pursuant to the provisions of the New Jersey Water Quality Planning Act, N.J.S.A. 58:11A-1 et seq., and the Statewide Water Quality Management Planning rules, N.J.A.C. 7:15-3.4, an amendment to the Monmouth County Water Quality Management Plan was adopted by the Department of Environmental Protection. This amendment provides for a new on-site ground water disposal system to serve the proposed Riverview Assisted Living facility on Block 46, Lot 17.01 in Colts Neck Township, Monmouth County. The projected wastewater flow from the facility is 10,800 gallons per day (gpd), based on 150 gpd per each of 72 beds. The approximately 12.5 acre site is designated as "Service Area for Wastewater Facilities with Planning Flows of Less Than 20,000 Gallons Per Day Which Discharge to Ground Water." This amendment also modifies the Township of Colts Neck Wastewater Management Plan.

This amendment represents only one part of the permit process and other issues will be addressed prior to final permit issuance. Additional issues which were not reviewed in conjunction with this amendment but which may need to be addressed may include, but are not limited to, the following: antidegradation; effluent limitations; water quality analysis; exact locations and designs of future treatment works (pump stations, interceptors, sewers, outfalls, wastewater treatment plants); and development in wetlands, flood prone areas, designated Wild and Scenic River areas, or other environmentally sensitive areas which are subject to regulation under Federal or State statutes or rules.



Lance R. Miller
Director
Division of Watershed Management
Department of Environmental
Protection

9/2/99
Date

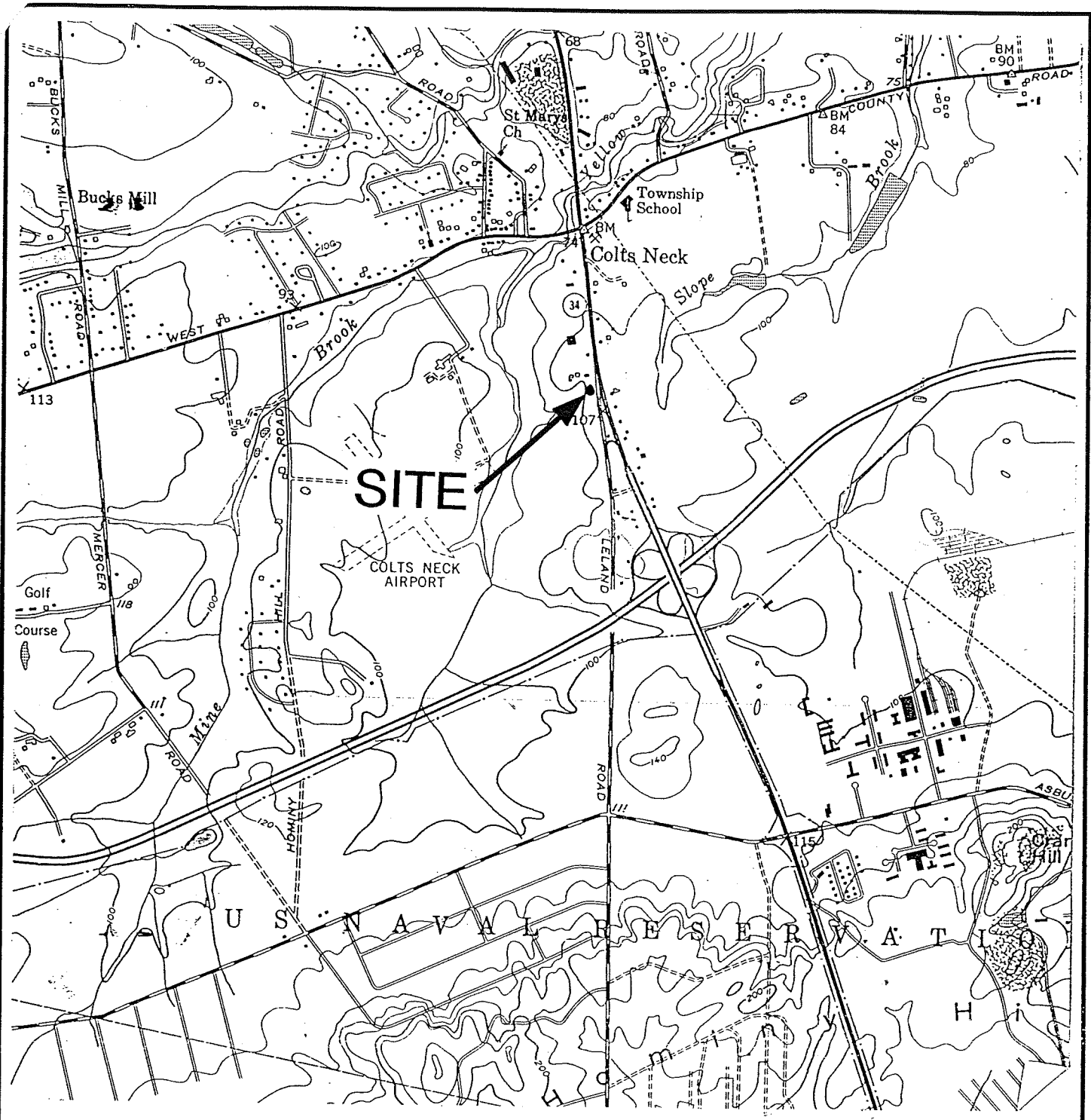


FIGURE 1: SITE LOCATION DEPICTED ON A COPY OF THE USGS 7.5 MINUTE SERIES QUAD MAP, MARLBORO QUAD.

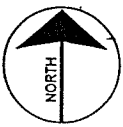
TOPOGRAPHIC MAP

SCHOOR DEPALMA

Engineers and Design Professionals

200 STATE HIGHWAY NINE
P.O. BOX 900

MANALAPAN, N.J. 07726-0900
TEL. (732) 577-9000 FAX. (732) 577-9888



RIVERVIEW ASSISTED LIVING
BLOCK 46, LOT 17.01
COLTS NECK TOWNSHIP
MONMOUTH COUNTY, N.J.



SCALE 1" = 2000'	DATE 5/27/98	DRAWN BY ARTALE	PROJECT No. B96053A
---------------------	-----------------	--------------------	------------------------

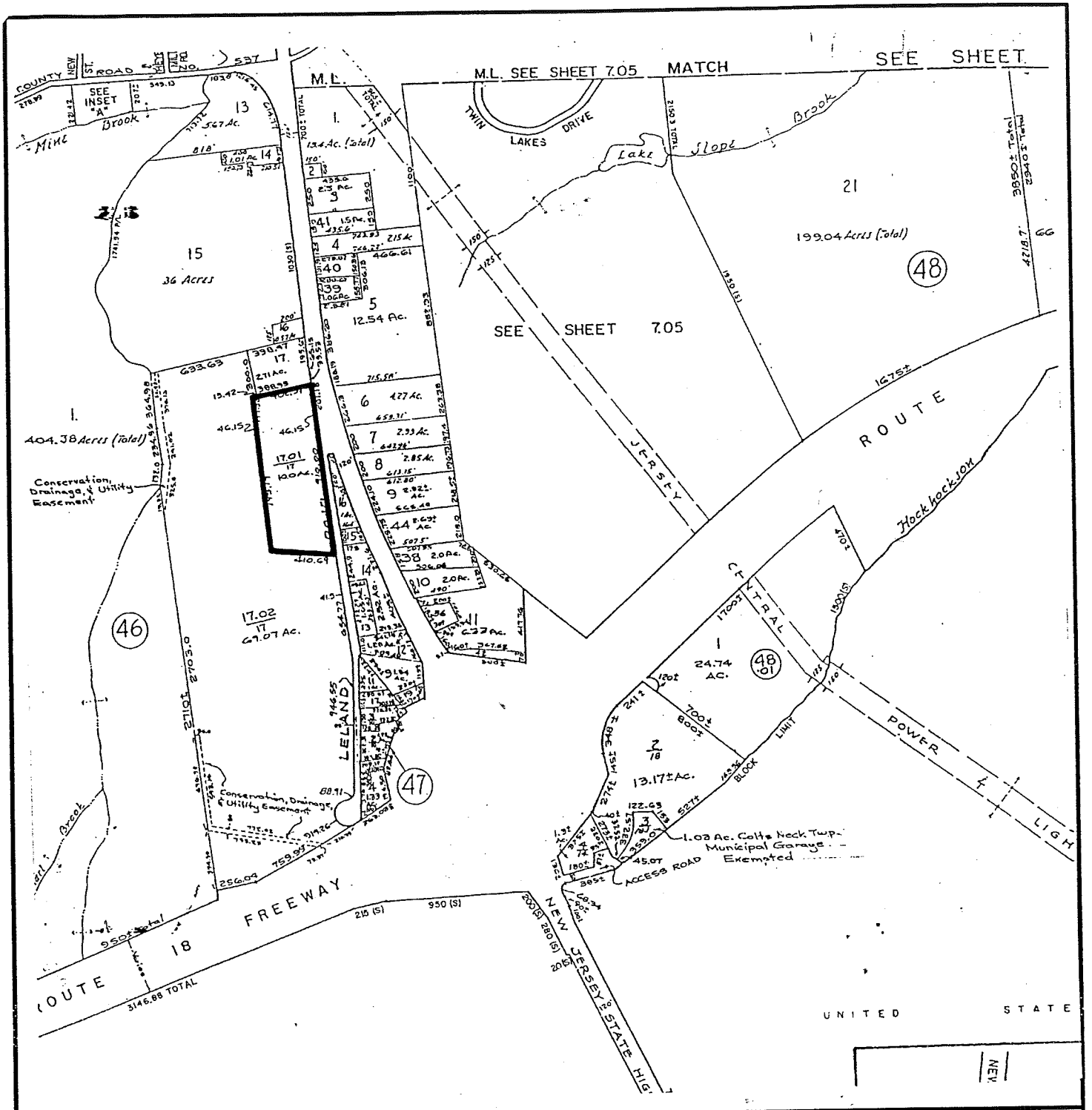
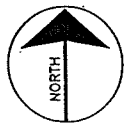


FIGURE 2: SITE BOUNDARY OUTLINED ON A COPY OF A COLTS NECK TOWNSHIP TAX MAP.



RIVERVIEW ASSISTED LIVING
 BLOCK 46, LOT 17.01
 COLTS NECK TOWNSHIP
 MONMOUTH COUNTY, N.J.

cod: /DATA/DRAWINGS/NEW/P/ENV98/B96053A

TAX MAP



SCHOOR DEPALMA

Engineers and Design Professionals

200 STATE HIGHWAY NINE
 P.O. BOX 900
 MANALAPAN, N.J. 07726-0900
 TEL. (732) 577-9000 FAX. (732) 577-9888

SCALE NTS	DATE 5/27/98	DRAWN BY ARTALE	PROJECT No. B96053A
--------------	-----------------	--------------------	------------------------