

DEPARTMENT OF ENVIRONMENTAL PROTECTION
OFFICE OF WATER RESOURCES MANAGEMENT COORDINATION

ADOPTED AMENDMENT TO THE TRI-COUNTY WATER QUALITY
MANAGEMENT PLAN

Public Notice

Take notice that on ~~OCT 03~~ **2016** pursuant to the provisions of the New Jersey Water Quality Planning Act, N.J.S.A. 58:11A-1 et seq., and the Statewide Water Quality Management Planning rules (N.J.A.C. 7:15-3.4), an amendment (PI# 435433; Activity# AMD160007) to the Tri-County Water Quality Management (WQM) Plan was adopted by the Department of Environmental Protection (Department). This amendment also modifies the Mount Holly Municipal Utilities Authority (MHMUA) Wastewater Management Plan. This amendment, submitted on behalf of the Catholic Diocese of Trenton expands the MHMUA sewage treatment plant (STP) sewer service area (SSA) by 12.6 acres on a portion of Block 8801/Lot 3.01 in Moorestown Township. The potential development opportunity under present zoning is for up to 200,000 square feet of office space (not office/warehouse space as incorrectly stated in the July 7, 2016 preliminary notice that was published in the August 15, 2016 New Jersey Register). The property is located south of Centerton Road and north of Interstate 295.

This amendment has been reviewed in accordance with the Water Quality Management Planning rules at N.J.A.C. 7:15. This notice represents the Department's determination that the amendment is in compliance with the regulatory criteria pursuant to N.J.A.C. 7:15-5.24 and 5.25.

In accordance with N.J.A.C. 7:15-5.24, environmentally sensitive areas (ESAs) have been assessed to determine what areas of the proposed project site are appropriate for inclusion in the SSA. Pursuant to N.J.A.C. 7:15-5.24(b), ESAs are defined as contiguous areas of 25 acres or larger consisting of habitat for threatened and endangered species as identified on the Landscape Project Maps of Habitat for Endangered, Threatened or Other Priority Species, Natural Heritage Priority Sites, Category One (C1) special water resource

protection areas, and wetlands, alone or in combination. No such ESAs are included in the SSA.

In accordance with N.J.A.C. 7:15-5.24(b)1, to identify areas designated as threatened or endangered species habitat, the Department utilized the Division of Fish and Wildlife's Landscape Project Maps of Habitat for Endangered, Threatened or Other Priority Species, version 3.1. Areas identified by the Landscape Project as being suitable habitat for threatened and endangered species Ranks 3 (State threatened), 4 (State endangered), and 5 (Federal endangered or threatened) are not to be included in SSAs except as provided under N.J.A.C. 7:15-5.24(e) – (h). Review of the proposed project site has determined that no threatened or endangered species habitat exists on site.

In accordance with N.J.A.C. 7:15-5.24(b)2, areas mapped as Natural Heritage Priority Sites are not to be included in SSAs, except as provided under N.J.A.C. 7:15-5.24(e) – (h). Review of the proposed project site has determined that no Natural Heritage Priority Sites exist on site.

In accordance with N.J.A.C. 7:15-5.24(b)3, areas identified as special water resource protection areas along Category One waters and their tributaries are not to be included in SSAs, except as provided under N.J.A.C. 7:15-5.24(e) – (h). The Department has determined that no special water resource protection areas along Category One waters or their tributaries exist on the site.

In accordance with N.J.A.C. 7:15-5.24(b)4, areas mapped as wetlands pursuant to N.J.S.A. 13:9A-1 and 13:9B-25 are not to be included in SSAs, except as provided under N.J.A.C. 7:15-5.24(e) – (h). In accordance with N.J.A.C. 7:15-5.24(e)2, Freshwater Wetlands Letter of Interpretation: Line Verification File No. 0322-15-0006.1 FWW150001 (LOI) was provided, confirming the extent of wetlands and transition areas on the site. The provisions of N.J.A.C. 7:15-5.24(b)4, have been satisfied as there are no wetlands or transition areas within the SSA.

Pursuant to N.J.A.C. 7:15-5.24(c), Coastal Fringe Planning Areas, Coastal Rural Planning Areas, and Coastal Environmentally Sensitive Areas shall be excluded from SSA. There are no such areas on the proposed site.

Pursuant to N.J.A.C. 7:15-5.24(d)1, areas with Federal 201 grant limitations that prohibit the extension of sewers into specified environmentally sensitive areas are excluded from the SSA. Pre-existing grant conditions and requirements (from Federal and State grants or loans for sewerage facilities), which provide for restriction of sewer service to environmentally sensitive areas, are unaffected by adoption of this amendment and compliance is required.

Pursuant to N.J.A.C. 7:15-5.24(d)2-4, the Department evaluated the presence of other special restricted areas, specifically, beaches as defined at N.J.A.C.7:7e-3.22 (currently codified at N.J.A.C. 7:7-9.22); coastal high hazard areas as defined at N.J.A.C.7:7E-3.18 (currently codified at N.J.A.C. 7:7-9.18); and dunes as defined at N.J.A.C.7:7E-3.16 (currently codified at N.J.A.C. 7:7-9.16). Areas identified as beaches, coastal high hazard areas and dunes are not to be included in SSA, except as provided under N.J.A.C. 7:15-5.24(e) – (h). There are no beaches, coastal high hazard areas, or dunes on the project site. Therefore, the conditions of N.J.A.C. 7:15-5.24(d)2-4 have been satisfied.

In accordance with N.J.A.C. 7:15-5.25(h)1, the projected wastewater flow of potential future development has been evaluated. Currently the MHMUA STP (NJ0024015) is permitted to discharge up to 7.67 million gallons per day (mgd). Based on an average of the monthly average flow for the most recent twelve month period for which discharge monitoring data is available, the existing wastewater flow discharged from the MHMUA STP was calculated to be 2.99 MGD. The projected wastewater flow of future development that would be allowed under present zoning regulations, calculated in accordance with N.J.A.C. 7:14A-23.3, is 20,000 gallons per day. The provisions of N.J.A.C. 7:15-5.25(h)1 have been satisfied as the MHMUA STP currently has adequate available capacity to treat the proposed wastewater flow from potential future development on this site.

In accordance with N.J.A.C. 7:15-5.25(h)3, the water supply need for potential future development on the property has been evaluated. Water supply would be provided by the Moorestown Township Water Department (MTWD) (PWSID No. 0322001). MTWD is a public water system which withdraws water from the Potomac Raritan Magothy aquifer and purchases water from New Jersey American Water (NJAW). MTWD has approval to divert water from 7 wells with treatment plants at North Church Street, Kings Highway, and Hartford Road. The MTWD has diversion privileges set by Water Allocation Permit No. 5121. With its contractual committed purchases from NJAW, MTWD has a total supply of 177.773 million gallons per month (MGM) and currently has a monthly water supply surplus of 1.712 MGM. The proposed water demand of potential future development, calculated in accordance with N.J.A.C. 7:15-5.25(f)1i, is 1.16 MGM; therefore, sufficient monthly water supply is currently available to serve potential future development within the existing water allocation permit limits and contractual purchases. However, MTWD has a firm capacity deficit of 2.808 MGD which it will need to resolve prior to the Department approving a Safe Drinking Water Permit to serve the project.

In accordance with N.J.A.C. 7:15-5.25(h)4, a project or activity's stormwater management is to be evaluated. The municipal governments are responsible for review and implementation of the Stormwater Management rules during their review and approval of proposed development. Moorestown Township has an adopted stormwater management ordinances (No. 6-Jun); see N.J.A.C. 7:8-4. Moorestown Township is also required to implement the N.J.A.C. 7:8 requirements incorporated in the Residential Site Improvement Standards; see N.J.A.C. 5:21-7.

In accordance with N.J.A.C. 5.25(h)5, proposed development disturbance is not to be located in riparian zones except as provided under N.J.A.C. 7:15-5.25(h)i-vii. Riparian zones or buffers are established along all surface waters, based on the surface water body's classification designated in the Surface Water Quality Standards at N.J.A.C. 7:9B, under the following regulations: the Flood Hazard Area Control Act rules, and the Water Quality Management Planning rules. Although the Surface Water Quality Standards GIS mapping

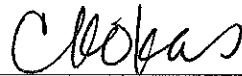
shows a portion of a Parkers Creek Tributary extending onto the site, a field investigation by Department staff on June 22, 2016 confirmed that the Parker's Creek Tributary does not, in fact, extend onto the site. In accordance with N.J.A.C. 7:15-5.25(h)5, the site is not located in a riparian zone.

In accordance with N.J.A.C. 7:15-5.25(h)6, proposed development disturbance is not to be located in areas with steep slopes, defined as any slope equal to or greater than 20 percent. There are no steep slopes on the subject site.

This amendment proposal was noticed in the New Jersey Register on August 15, 2016 at 48 N.J.R. 1708(a) and no comments were received during the comment period.

This proposed amendment represents only one part of the permit process and other issues may need to be addressed prior to final permit issuance. These issues may include, but are not limited to, the following: compliance with stormwater regulations; antidegradation; effluent limitations; water quality analysis; exact locations and designs of future treatment works; development in wetlands and flood prone areas, or other environmentally sensitive areas which are subject to regulation under Federal or State statutes or rules. Approval of this amendment does not eliminate the need for any permits, approvals or certifications required by any Federal, State, County or municipal review agency with jurisdiction over this project/activity.

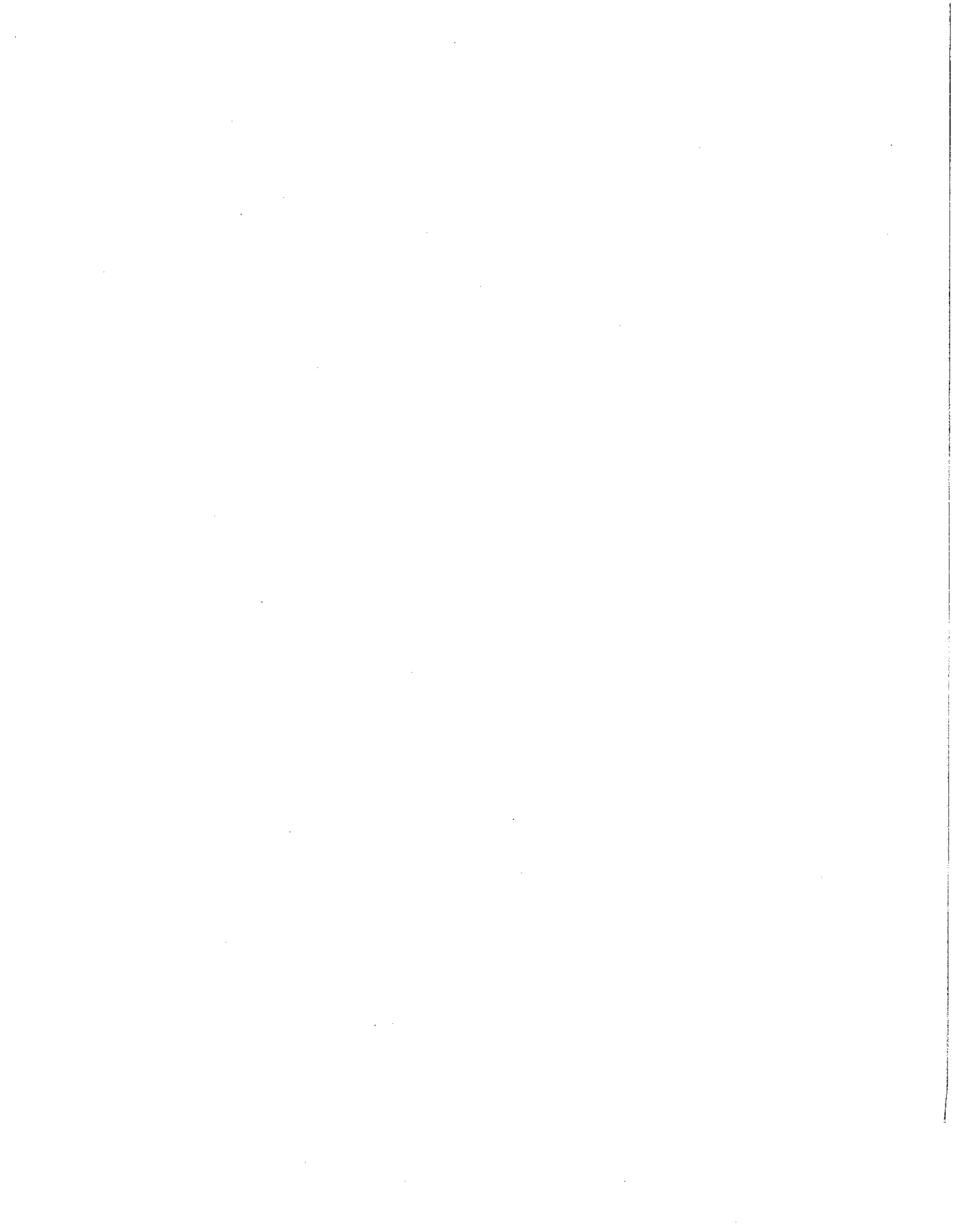
Sewer service to any particular project is subject to contractual arrangements between municipalities, authorities and/or private parties, and is not guaranteed by this amendment.

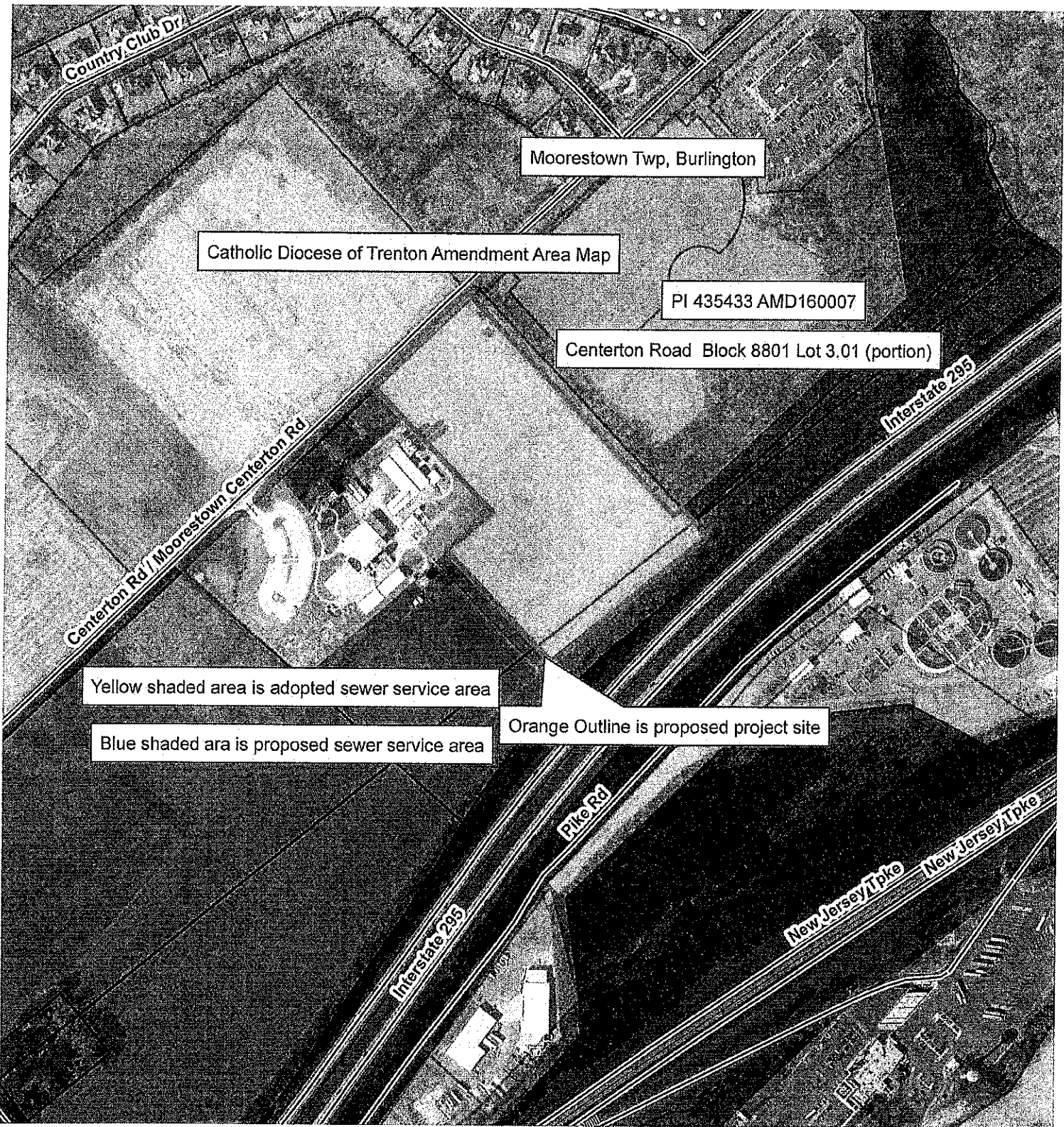


Colleen Kokas, Director
Office of WRM Coordination
Department of Environmental Protection

10.3.16

Date





Country Club Dr

Moorestown Twp, Burlington

Catholic Diocese of Trenton Amendment Area Map

PI 435433 AMD160007

Centeron Road Block 8801 Lot 3.01 (portion)

Centeron Rd / Moorestown Centeron Rd

Interstate 295

Yellow shaded area is adopted sewer service area

Blue shaded ara is proposed sewer service area

Orange Outline is proposed project site

Pike Rd

Interstate 295

New Jersey Tpke
New Jersey Tpke

