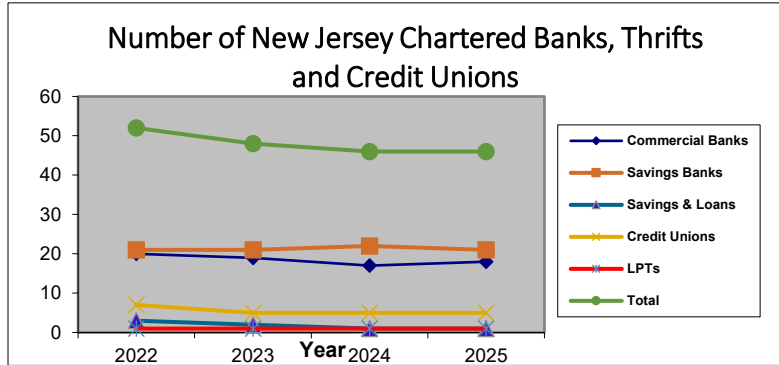
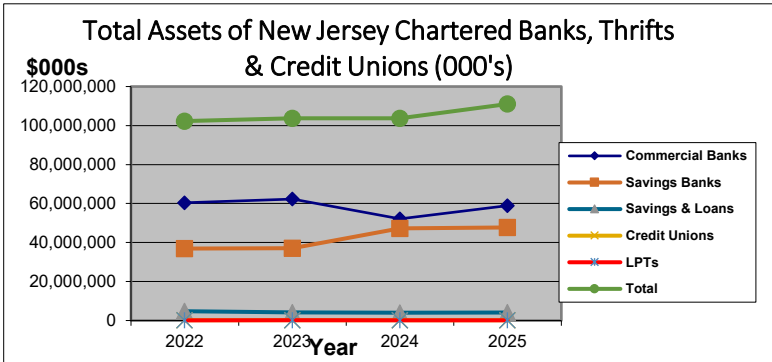


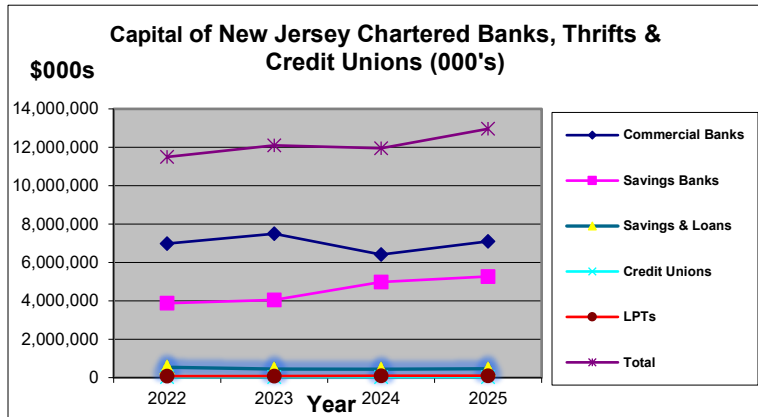
Four-Year Trends of New Jersey Chartered Banks, Thrifts and Credit Unions



Type of Banks	31-Dec-22	31-Dec-23	31-Dec-24	31-Dec-25
Commercial Banks	20	19	17	18
Savings Banks	21	21	22	21
Savings & Loans	3	2	1	1
Credit Unions	7	5	5	5
LPTs	1	1	1	1
Total	52	48	46	46

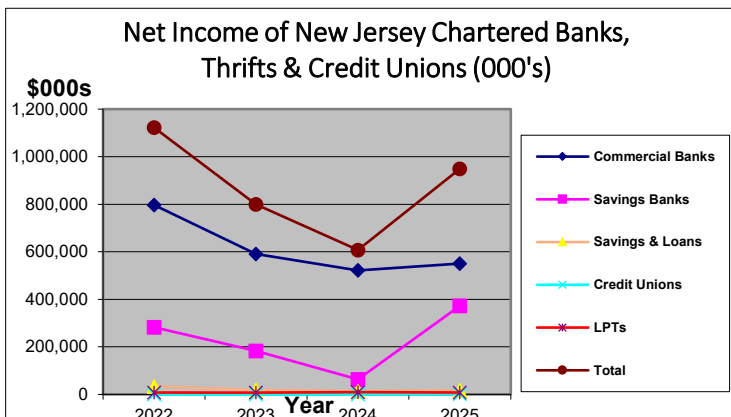


Type of Banks	31-Dec-22	31-Dec-23	31-Dec-24	31-Dec-25
Commercial Banks	60,364,397	62,290,481	52,149,077	58,990,985
Savings Banks	36,899,339	37,054,617	47,259,920	47,731,105
Savings & Loans	4,766,569	4,173,099	4,009,043	4,038,203
Credit Unions	168,451	152,184	163,933	149,375
LPTs	90,498	96,989	116,935	116,935
Total	102,289,254	103,767,370	103,698,908	111,026,603

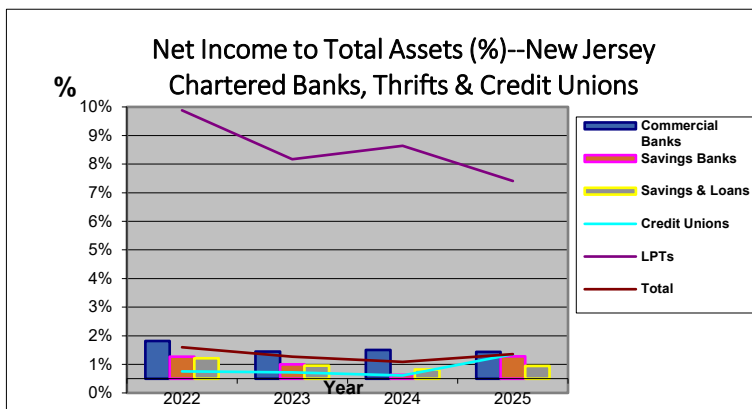


Type of Banks	31-Dec-22	31-Dec-23	31-Dec-24	31-Dec-25
Commercial Banks	6,979,577	7,495,895	6,411,370	7,098,084
Savings Banks	3,875,873	4,050,745	4,977,603	5,269,918
Savings & Loans	540,901	447,972	438,811	467,973
Credit Unions	25,498	26,167	26,666	26,134
LPTs	75,529	82,972	92,487	100,568
Total	11,497,378	12,103,751	11,946,937	12,962,677

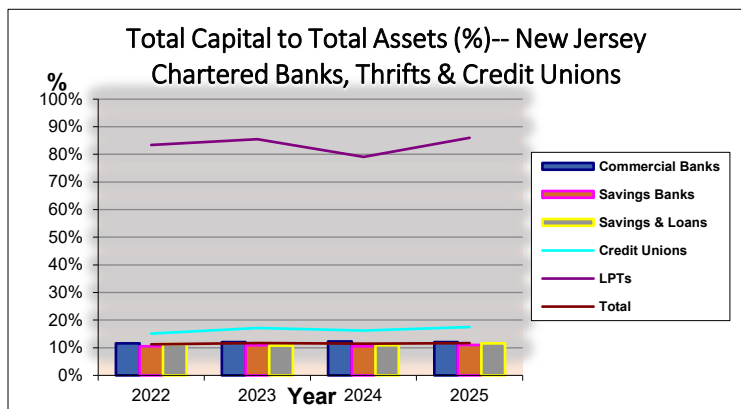
Four-Year Trends of New Jersey Chartered Banks, Thrifts and Credit Unions



Type of Banks	31-Dec-22 Net Income (\$000s)	31-Dec-23 Net Income (\$000s)	31-Dec-24 Net Income (\$000s)	31-Dec-25 Net Income (\$000s)
Commercial Banks	796,762	590,113	521,473	550,036
Savings Banks	282,851	183,081	63,293	372,148
Savings & Loans	34,009	18,855	13,032	17,865
Credit Unions	418	335	180	1,273
LPTs	8,490	7,443	9,515	8,081
Total	1,122,530	799,827	607,493	949,403



Type of Banks	31-Dec-22 Net Income % of Tot Assets	31-Dec-23 Net Income % of Tot Assets	31-Dec-24 Net Income % of Tot Assets	31-Dec-25 Net Income % of Tot Assets
Commercial Banks	1.32%	0.95%	1.00%	0.93%
Savings Banks	0.77%	0.49%	0.13%	0.78%
Savings & Loans	0.71%	0.45%	0.33%	0.44%
Credit Unions	0.25%	0.22%	0.11%	0.85%
LPTs	9.38%	7.67%	8.14%	6.91%
Total	1.10%	0.77%	0.59%	0.86%



Type of Banks	31-Dec-22 Tot Capital % of Tot Assets	31-Dec-23 Tot Capital % of Tot Assets	31-Dec-24 Tot Capital % of Tot Assets	31-Dec-25 Tot Capital % of Tot Assets
Commercial Banks	11.56%	12.03%	12.29%	12.03%
Savings Banks	10.50%	10.93%	10.53%	11.04%
Savings & Loans	11.35%	10.73%	10.95%	11.59%
Credit Unions	15.14%	17.19%	16.27%	17.50%
LPTs	83.46%	85.55%	79.09%	86.00%
Total	11.24%	11.66%	11.52%	11.68%