

Monitoring Inventory & Needs Assessment for the Delaware Estuary



Credit: Ron MacGillivray, Fortescue, NJ

Credit: PDE, Longwood

Credit: PDE, Milford, DE

Credit: Andrea Rose Photography

WHAT IS THE MONITORING ASSESSMENT?

Monitoring Goals for Delaware Estuary Program (DELEP)

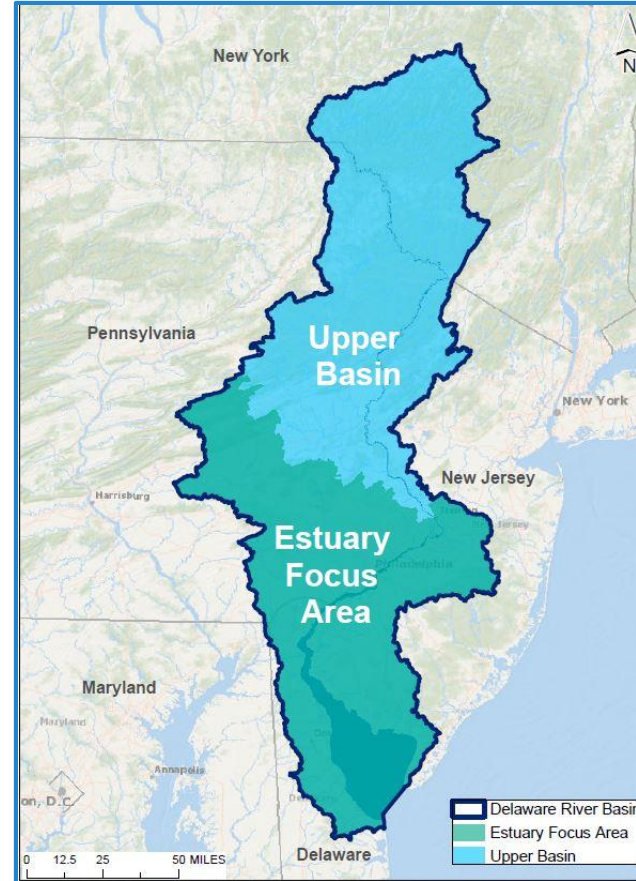
- Inventory critical monitoring in region
- Create a list of monitoring priorities

DELEP Focus

- Measures needed to track Comprehensive Conservation & Management Plan (CCMP) outcomes
- Study Region: Delaware Estuary Focus Area

Monitoring Approach in 2019 CCMP

- STAC-MACC Meeting (every year)
- TREB Collaboration/State of Estuary (every 5 years)
- Monitoring Workshop (every 5 years)



WHAT'S IN THE MONITORING INVENTORY?

- 620 monitoring parameters total
- Monitoring programs submitted by 36 organizations or partnerships

American Rivers
Berks Nature and
volunteers
Bucks County
Conservation District
Delaware Nature Society
Delaware State
University
Delaware StreamWatch
DNHP & DNREC
DNREC
DNREC & DNERR
DNREC & PDE

DRBC
DRBC & DNREC
DRBC & NJDEP
DRBC & NPS
DVRPC
Independence Seaport
Museum
Lower Merion
Conservancy
NJDEP
PADEP & CRM
Pennypack Ecological
Restoration Trust
PWD

PWD & USGS
Rutgers Haskin Shellfish
Research Laboratory
Temple University
TNC DE Volunteers
TNC NJ & Rutgers University
Tookany Tacony-Frankford
Partnership
USGS
Villanova University
White Clay Wild and Scenic
River Program
Wissahickon Valley Watershed
Association



WHAT'S IN THE MONITORING INVENTORY?



Living Resources

- Animals (29)
- Vegetation (24)
- Microbiological (15)
- Biological (7)

Water

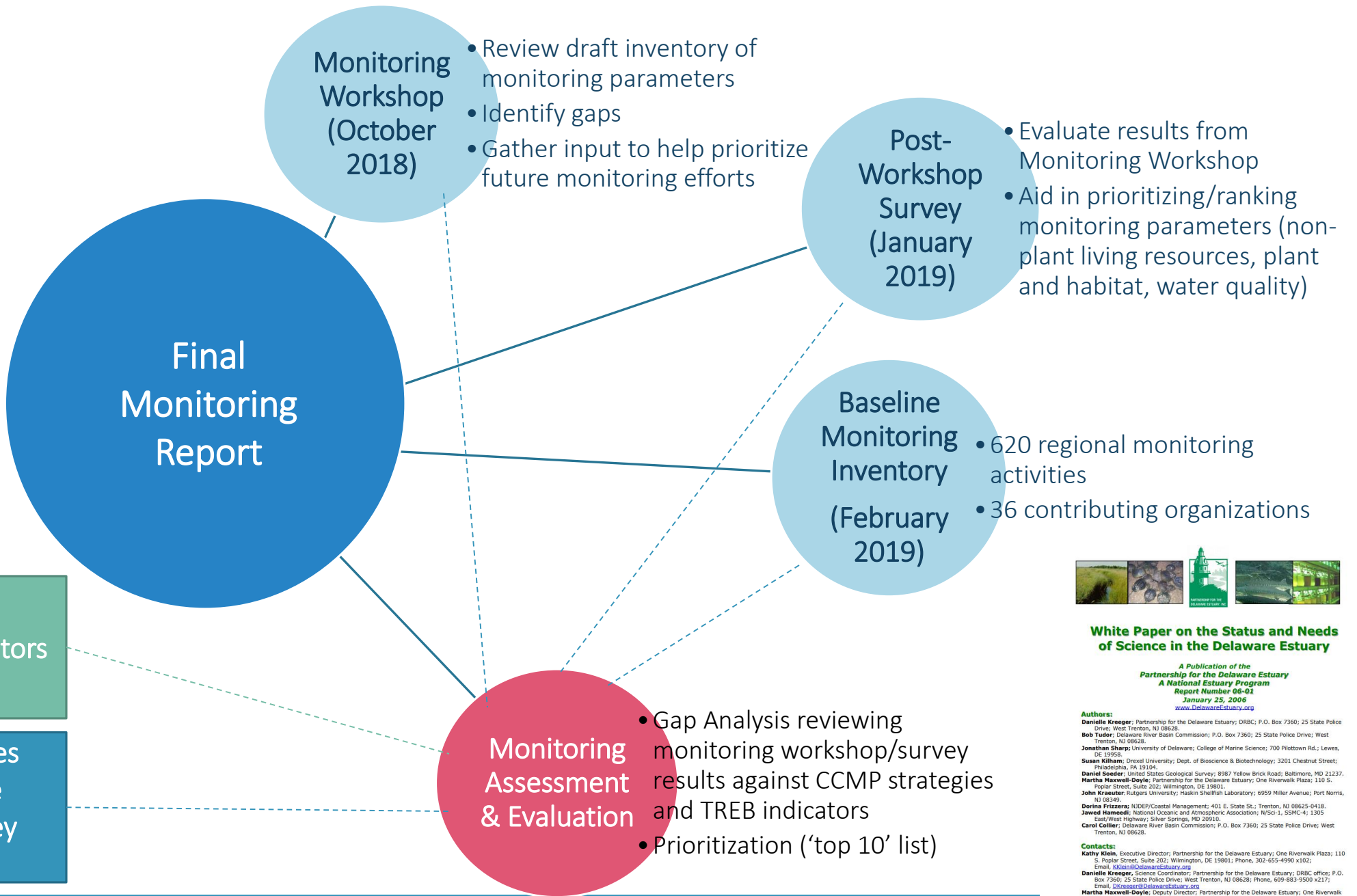
- Nutrients (118)
- Water Quality (111)
- Inorganics (81)
- Organics (79)
- Chemical/Chemistry (25)
- Toxicity (6)
- PCBs/Pesticides (4)



Habitats

- Physical (33)
- Sediment (30)
- Spatial (11)
- Hydrology (10)
- Habitat (7)
- Geology (6)
- Buffer (5)
- Atmospheric (2)





White Paper on the Status and Needs of Science in the Delaware Estuary

*A Publication of the
Partnership for the Delaware Estuary
A National Estuary Program
Report Number 06-01
January 25, 2006
www.DelawareEstuary.org*

Authors:
Danielle Kreager: Partnership for the Delaware Estuary; DRBC; P.O. Box 7360; 25 State Police Drive; West Trenton, NJ 08628.
Bob Tudor: Delaware River Basin Commission; P.O. Box 7360; 25 State Police Drive; West Trenton, NJ 08628.
Jonathan Sharp: University of Delaware; College of Marine Science; 700 Pilottown Rd.; Lewes, DE 19958.
Susan Kilham: Drexel University; Dept. of Bioscience & Biotechnology; 3201 Chestnut Street; Philadelphia, PA 19104.
Daniel Soeder: United States Geological Survey; 8987 Yellow Brick Road; Baltimore, MD 21237.
Martha Maxwell-Doyle: Partnership for the Delaware Estuary; One Riverwalk Plaza; 110 S. Poplar Street, Suite 202; Wilmington, DE 19801.
John Kraeuter: Rutgers University; Haskin Shellfish Laboratory; 6959 Miller Avenue; Port Norris, NJ 08349.
Danina Frizzera: NIDEP/Coastal Management; 401 E. State St.; Trenton, NJ 08625-0418.
Jawed Hameedi: National Oceanic and Atmospheric Association; N/Sci-1, SSMC-4; 1305 East/West Highway; Silver Springs, MD 20910.
Carol Collier: Delaware River Basin Commission; P.O. Box 7360; 25 State Police Drive; West Trenton, NJ 08628.

Contacts:
Kathy Klein: Executive Director; Partnership for the Delaware Estuary; One Riverwalk Plaza; 110 S. Poplar Street, Suite 202; Wilmington, DE 19801; Phone, 302-655-4990 x102; Email, kklein@DelawareEstuary.org
Danielle Kreager: Science Coordinator; Partnership for the Delaware Estuary; DRBC office; P.O. Box 7360; 25 State Police Drive; West Trenton, NJ 08628; Phone, 609-863-9300 x217; Email, DKreager@DelawareEstuary.org
Martha Maxwell-Doyle: Deputy Director; Partnership for the Delaware Estuary; One Riverwalk Plaza; 110 S. Poplar Street, Suite 202; Wilmington, DE 19801; Phone, 302-655-4990 x103; Email, MDDoyle@DelawareEstuary.org

Suggested Method for Referencing this Document:
 Kreager, D., E. Tudor, J. Sharp, S. Kilham, D. Soeder, M. Maxwell-Doyle, J. Kraeuter, D. Frizzera, J. Hameedi and C. Collier. 2006. White paper on the status and needs of science in the Delaware Estuary. Partnership for the Delaware Estuary, Report #06-01. 72 pp.
<http://www.delawareestuary.org/science/research/assessmentreports/index.asp>

FINAL MONITORING REPORT NEXT STEPS

TOC REVIEW

- Create draft Table of Contents /report outline (March 2020)

INTERNAL REVIEW & ASSESSMNET

- Inventory w/ corresponding CCMP strategies
- Gap Analysis to identify future priorities and create 'top 10' list

FEEDBACK & PEER REVIEW

- Provide STAC and MACC opportunity for peer review (summer 2020 and STAC-MACC meeting in late 2020)

Final report to also include:

- Monitoring workshop summary report
- Post-workshop summary report
- NOAA ERMA Delaware Estuary monitoring layer

Background information on:

- Watershed & Delaware Estuary Program
- TREB Environmental Indicators
- CCMP (Performance Measures, Monitoring Approach & Inventory)



Partnership for the
**DELAWARE
ESTUARY**

Let's Collaborate

Emily Baumbach

Science Planning Coordinator

(302) 655 4990, x118 | EBaumbach@DelawareEstuary.org

*Connecting people, science, and nature
for a healthy Delaware River and Bay*