

Presented to an advisory committee of the DRBC on December 15, 2025. Contents should not be published or reposted in whole or in part without permission of the author(s) or the committee.

FFMP Implementation Performance

Release Year 2024-2025

June 1, 2024 - May 31, 2025

Sara Sayed

Water Resource Scientist

Amy Shallcross, PE

Manager, Water Resource Operations

RFAC Meeting

December 15th, 2025



Data Sources

All data used in the analysis are provisional.

Final/approved data are available from:

NYC Department of Environmental Protection (NYCDEP)

Office of the Delaware River Master (ODRM)

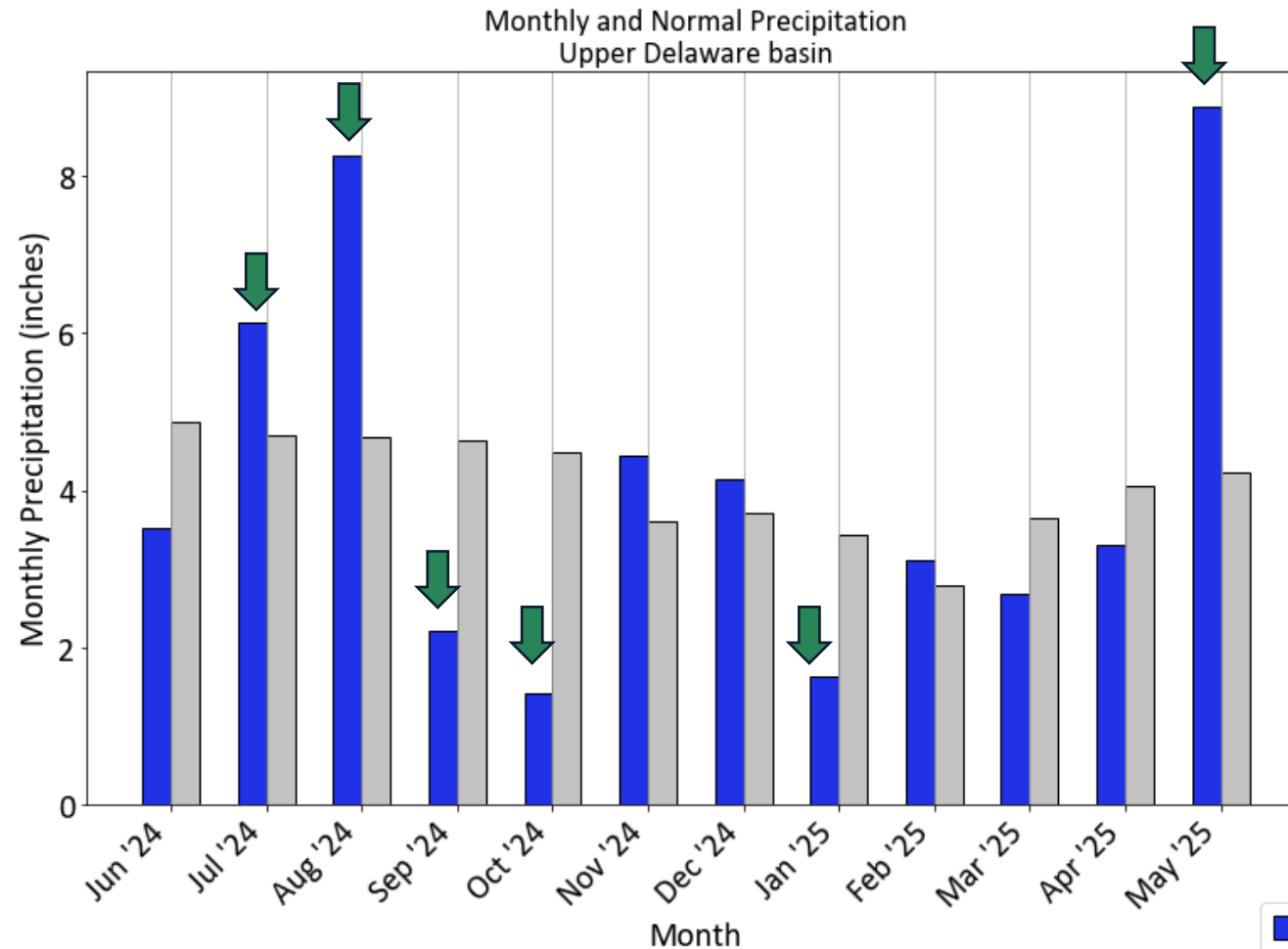
United States Geological Survey (USGS)

FFMP Performance Goals

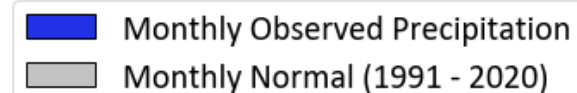
- Manage Droughts
- Maintain Flow Objectives
- Provide enhanced conservation releases
- Maintain desirable tailwater temperatures
- Minimize spills with Conditional Seasonal Storage Objective (CSSO)

Precipitation – Upper Basin

A mix of wet and dry periods throughout the year.



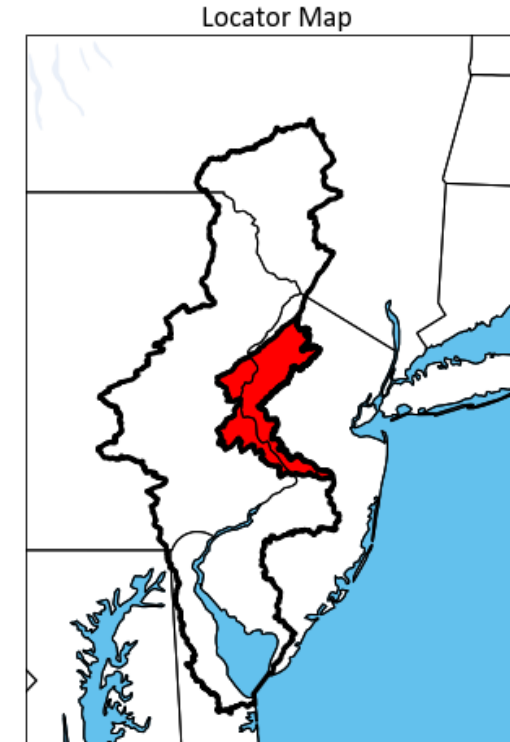
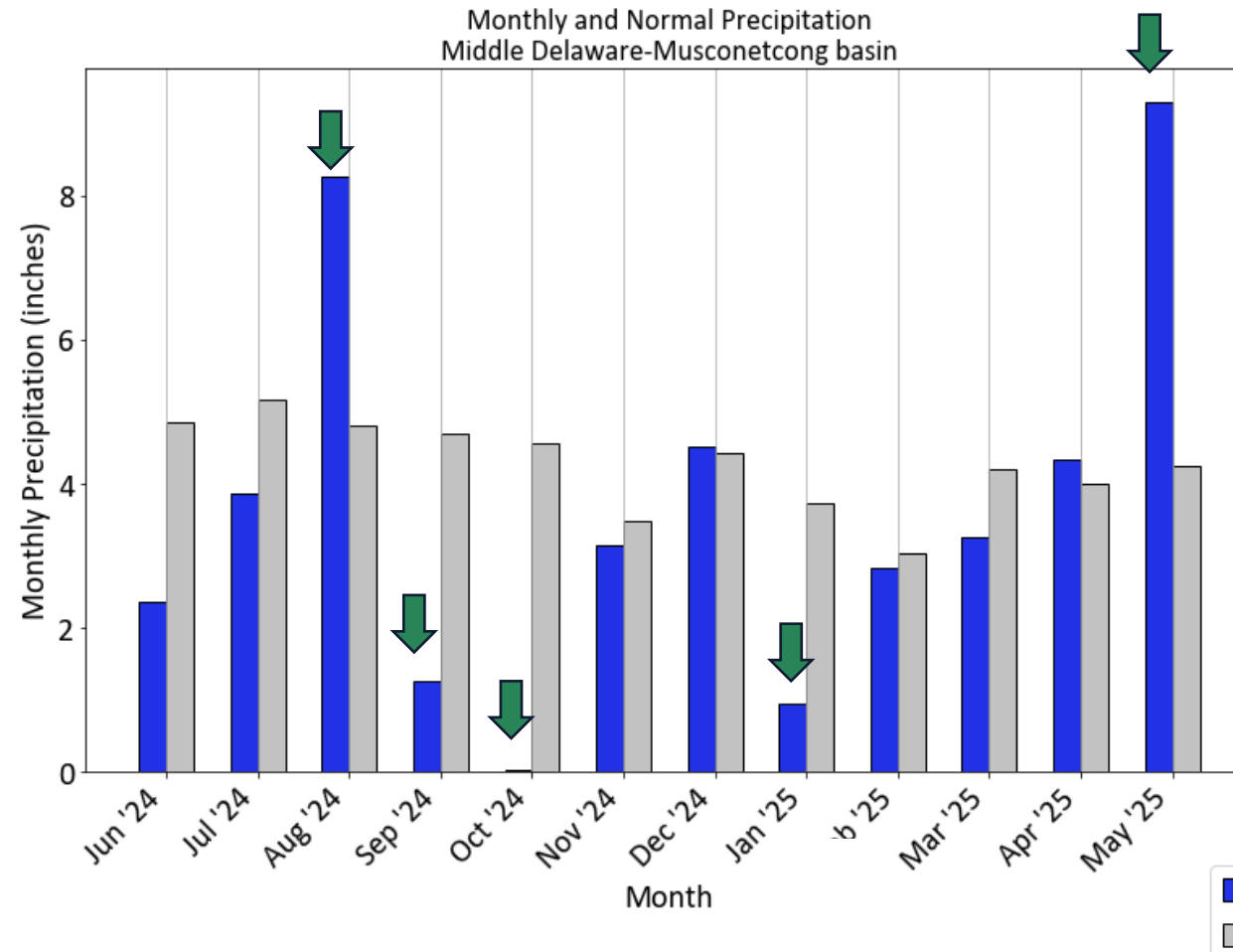
Source: ACIS, USGS HUC: 02040101
Monthly Normal is based on 29 stations in the Upper Delaware basin



Data Source: ACIS

Precipitation – Middle Basin

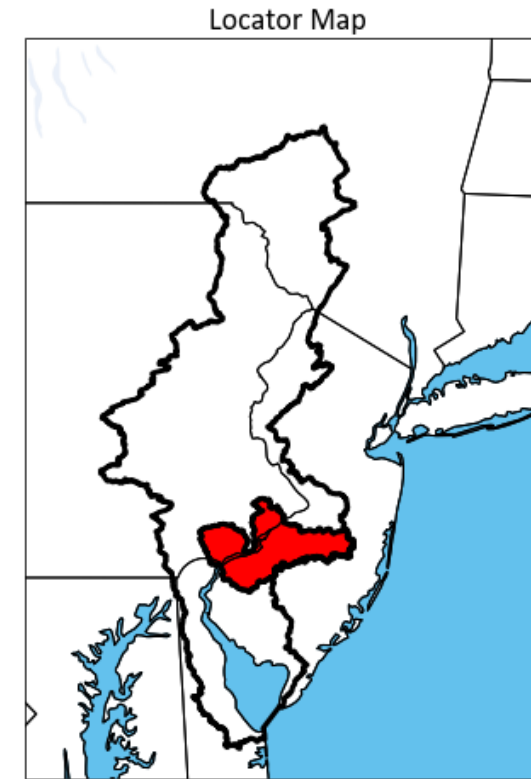
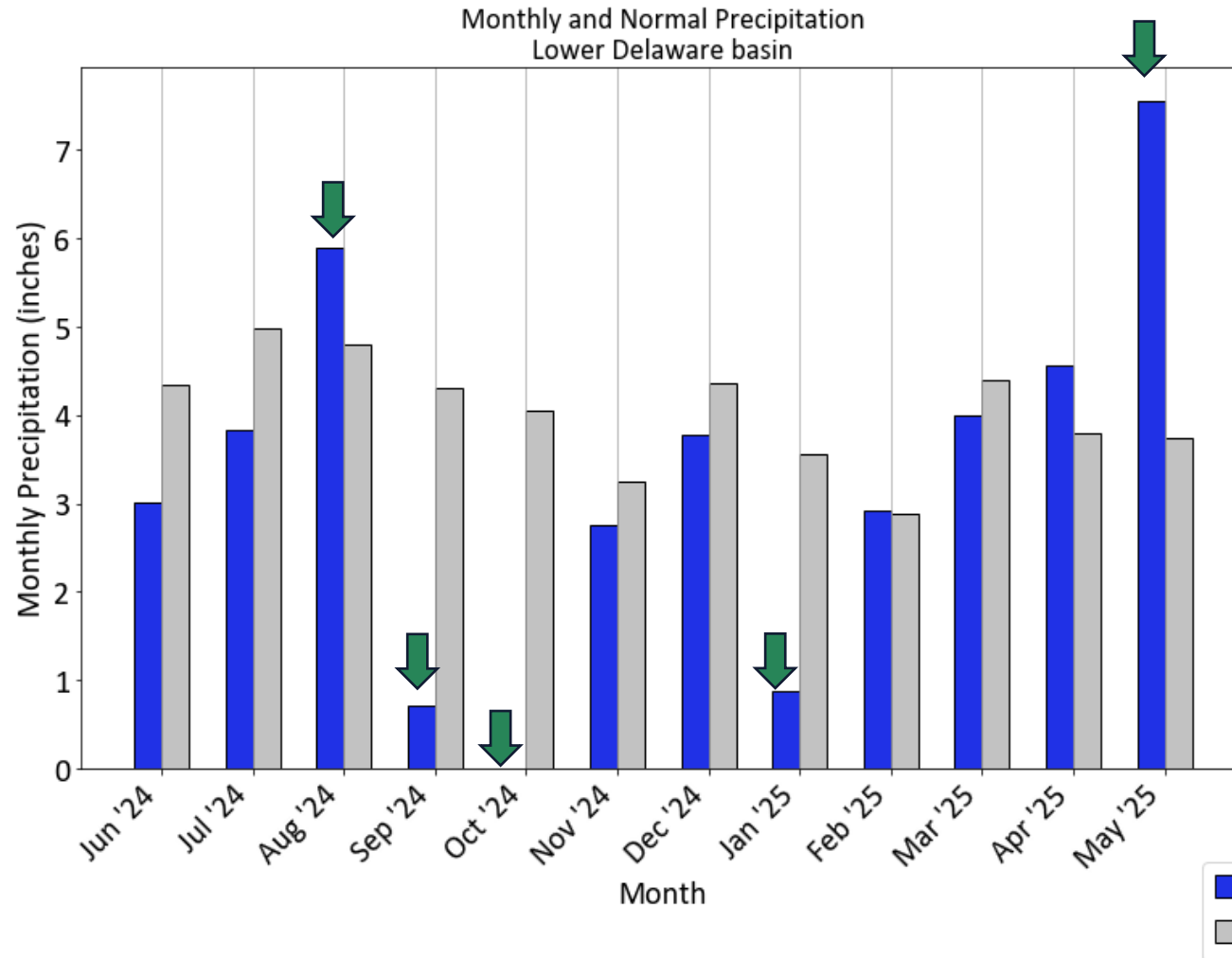
Mixed precipitation pattern with a very dry fall.



Source: ACIS, USGS HUC: 02040105
Monthly Normal is based on 91 stations in the Middle Delaware-Musconetcong basin

Precipitation – Lower Basin

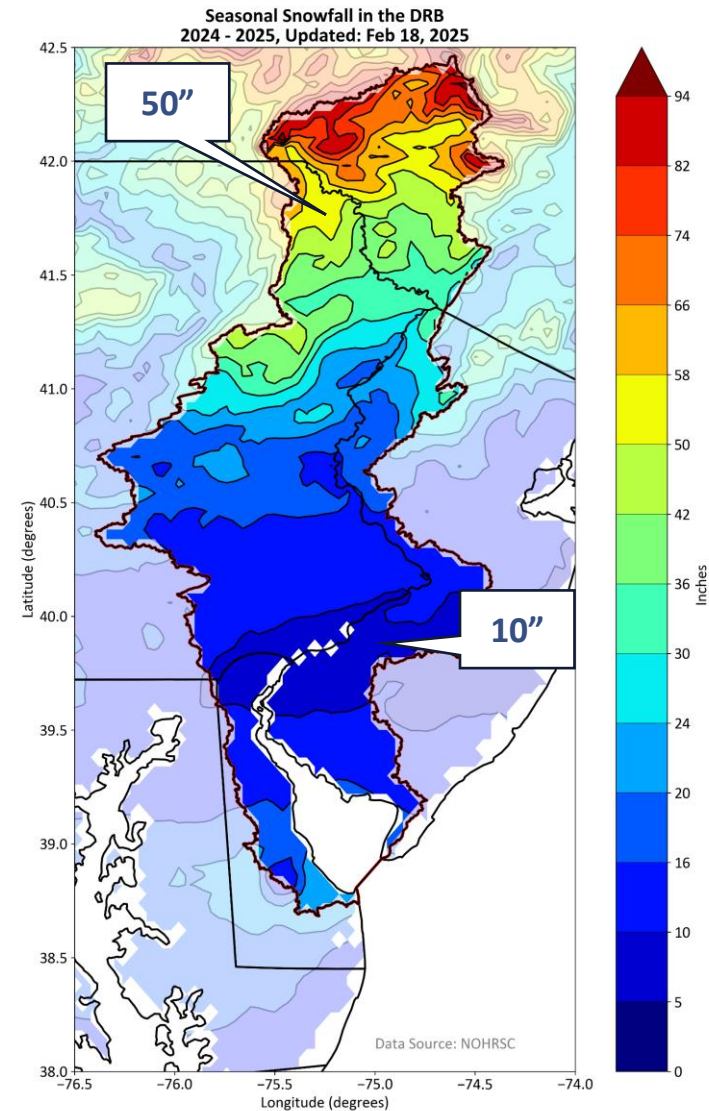
A mix of wet and dry periods throughout the year.



Source: ACIS, USGS HUC: 02040202
Monthly Normal is based on 106 stations in the Lower Delaware basin

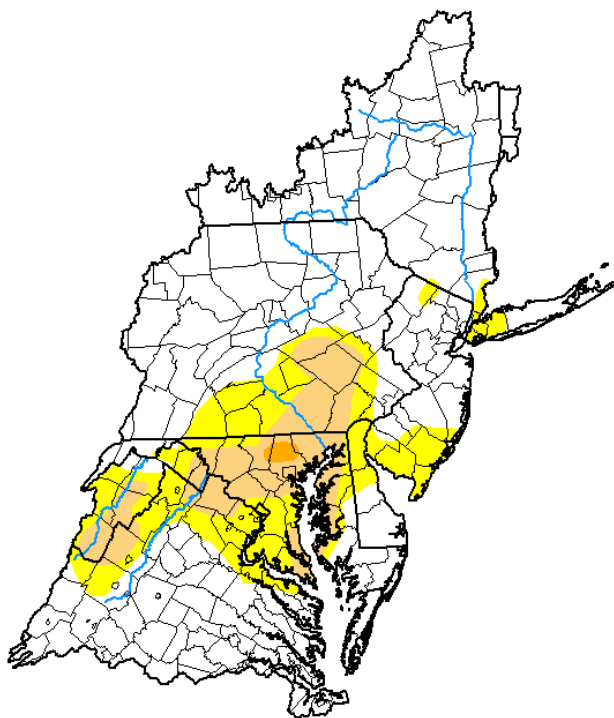
Snowfall

Some snow in the Upper Basin, but below normal for the season.



Drought Conditions

U.S. Drought Monitor Mid Atlantic Watershed



May 27, 2025
(Released Thursday, May. 29, 2025)
Valid 8 a.m. EDT

	Drought Conditions (Percent Area)					
	None	D0-D4	D1-D4	D2-D4	D3-D4	D4
Current	72.71	27.29	10.99	0.34	0.00	0.00
Last Week 05-20-2025	65.61	34.39	13.37	0.93	0.00	0.00
3 Months Ago 02-25-2025	34.22	65.78	36.14	14.91	1.79	0.00
Start of Calendar Year 01-01-2025	21.86	78.14	47.78	20.53	2.84	0.00
Start of Water Year 10-01-2024	54.36	45.64	11.61	2.50	0.40	0.00
One Year Ago 05-28-2024	96.09	3.91	0.00	0.00	0.00	0.00

Intensity:

None

D0 Abnormally Dry

D1 Moderate Drought

D2 Severe Drought

D3 Extreme Drought

D4 Exceptional Drought

The Drought Monitor focuses on broad-scale conditions. Local conditions may vary. For more information on the Drought Monitor, go to <https://droughtmonitor.unl.edu/About.aspx>

Author:
Brad Pugh
CPC/NOAA

droughtmonitor.unl.edu

Drought Status In the Delaware River Basin As Declared by the Individual Basin States Effective 6/23/2025

Pennsylvania

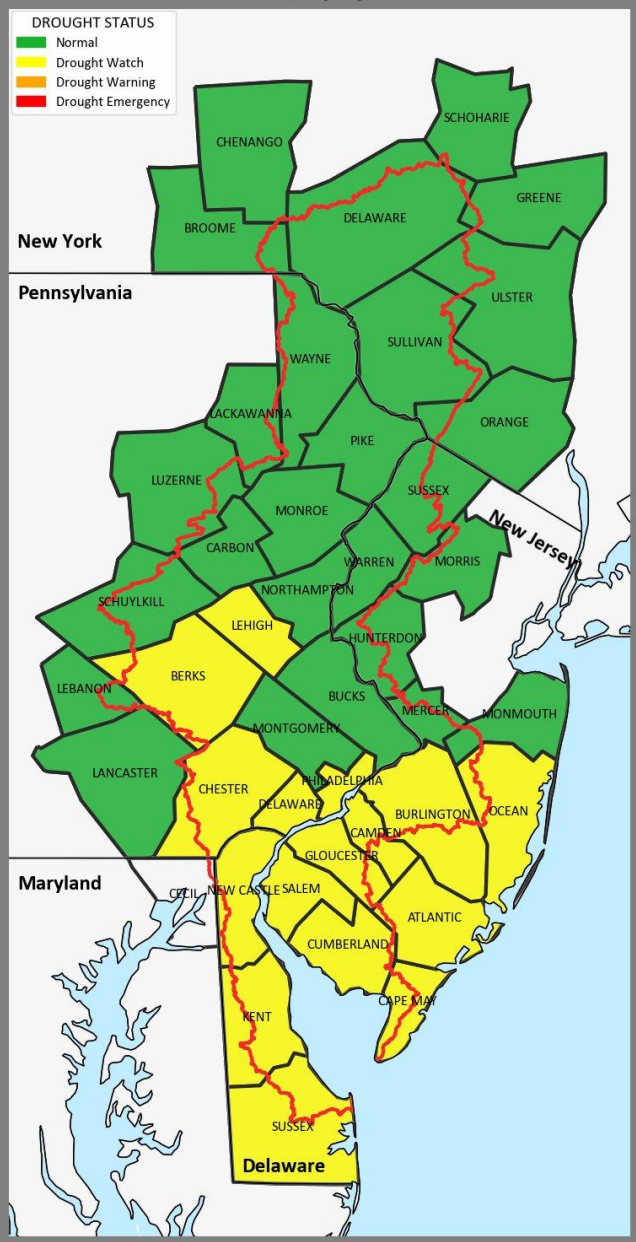
On 11/1/2024, PA declared a Drought Watch for 33 counties, incl. 13 in the DRB, and declared a Drought Warning for 2 counties, both in DRB.

On 4/5/2025, PA changed Schuylkill County from Drought Warning to Drought Watch.

On 6/10/2025, PA changed Berks County from Drought Warning to Drought Watch. Lehigh, Chester, Delaware and Philadelphia counties remain in drought watch. All other DRB counties in normal conditions.

Delaware

On 10/25/2024, DE declared a statewide Drought Watch.



New York

On 11/2/2024, NY declared a drought watch for Regions II& IIIA, incl. 6 counties in DRB.

On 11/18/2024, NY upgraded Regions II & IIIA to drought warning & placed the rest of NYS in drought watch.

On 12/16/2024, the entire NY state was downgraded to drought watch.

On 1/3/2025, NYSDEC announced the statewide downgrade from Drought Watch to Normal.

New Jersey

On 10/17/2024, NJ declared a statewide Drought Watch.

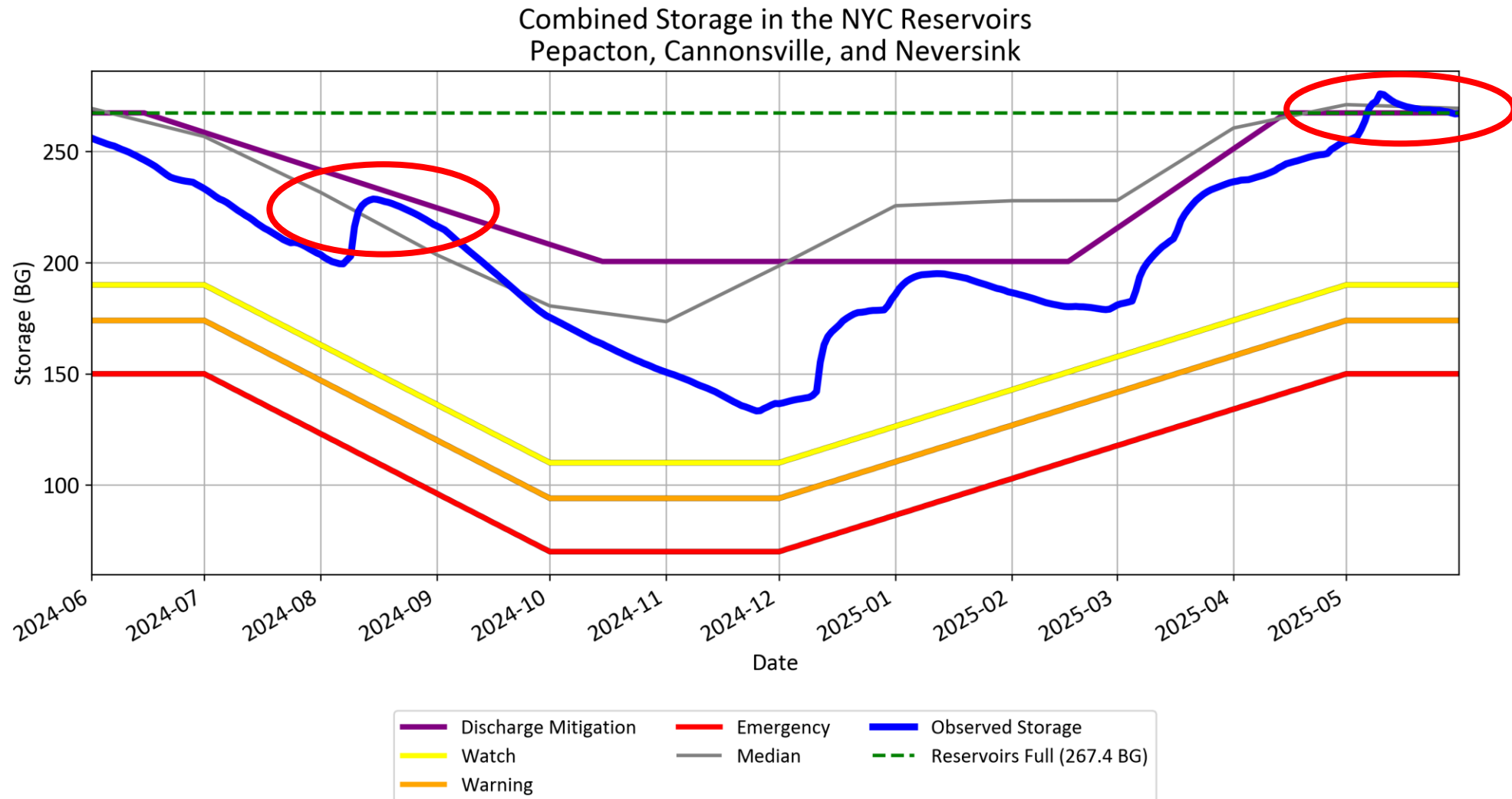
On 11/13/24, NJ declared a statewide Drought Warning.

On 6/11/2025, The statewide Drought Warning was lifted. Drought Watch remains for the Coastal South region.



New York City Reservoir Storage

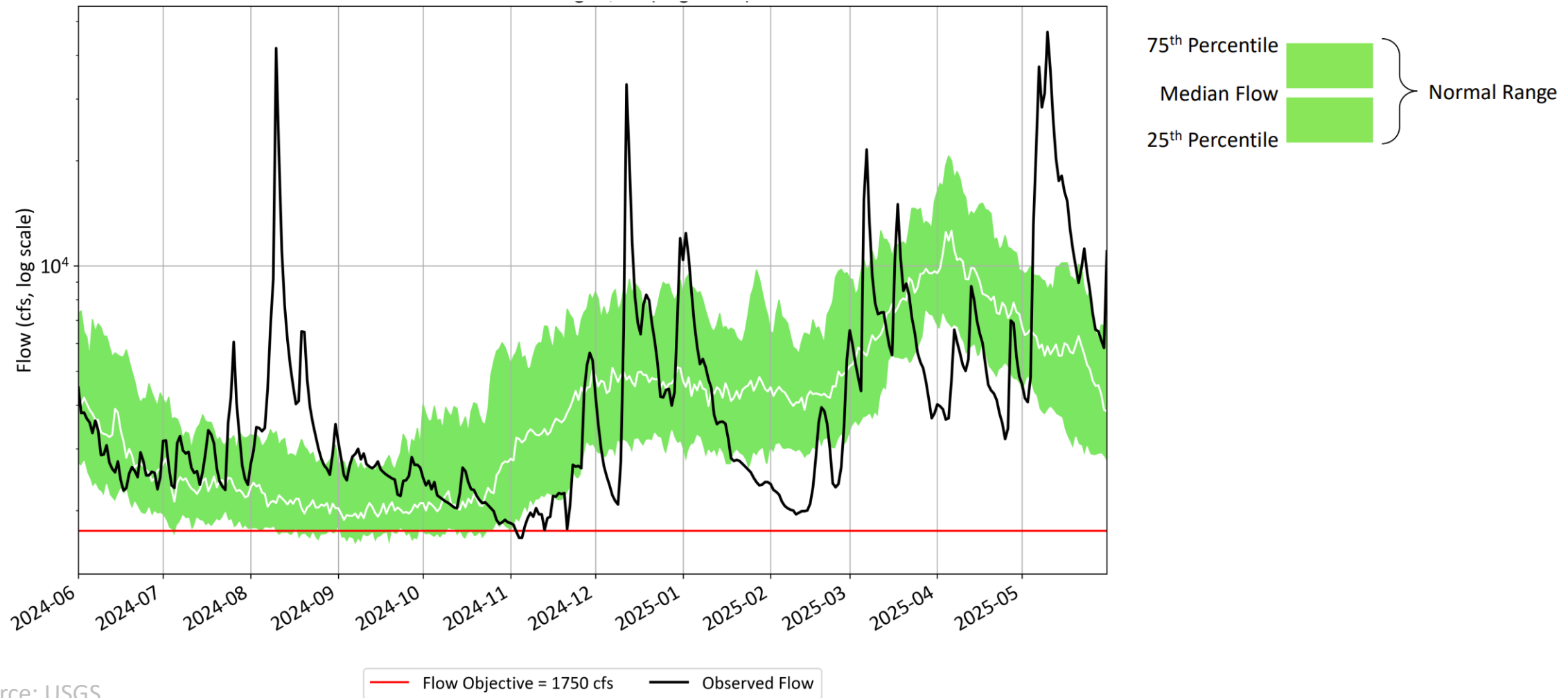
Combined reservoir storage stayed below median before recovering in May.



Data Source: NYCDEP

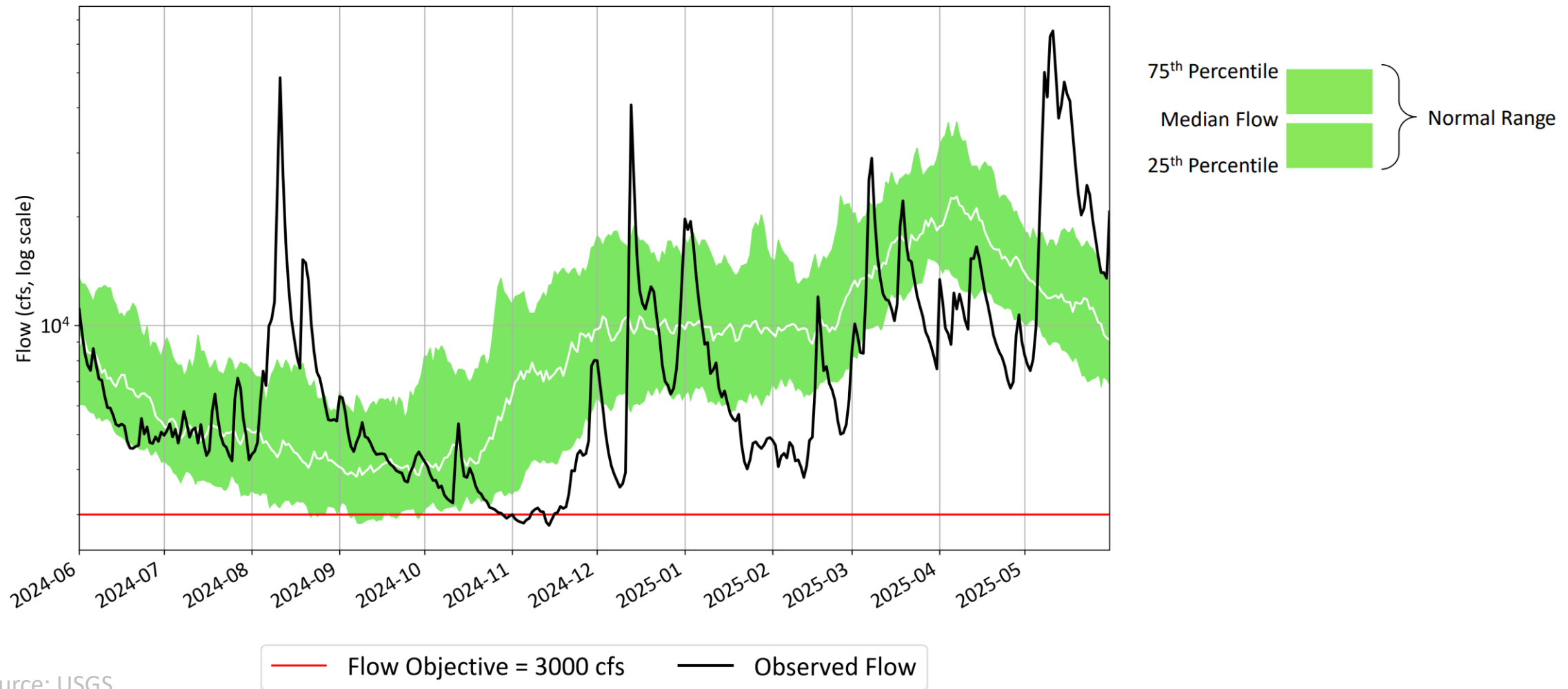
Flow at Montague, NJ

Flow was generally in normal range but slightly below normal during Fall 2024.



Flow at Trenton, NJ

Flow was generally in normal to below range throughout the year.



Flow Objectives

Releases were needed to meet Montague and Trenton flow objectives in Fall 2024.

Water Released from NYC to Meet Flow Objectives (MG)	
Montague*	50,527
Trenton	1,875
Total	52,401

Water Released from Lower Basin to Meet Trenton Flow Objectives (MG)	
Beltzville	3,028
Blue Marsh	0
Total	3,028

*Releases made to meet the Montague Flow Objective, called directed releases, include the conservation release for the days when water is needed.

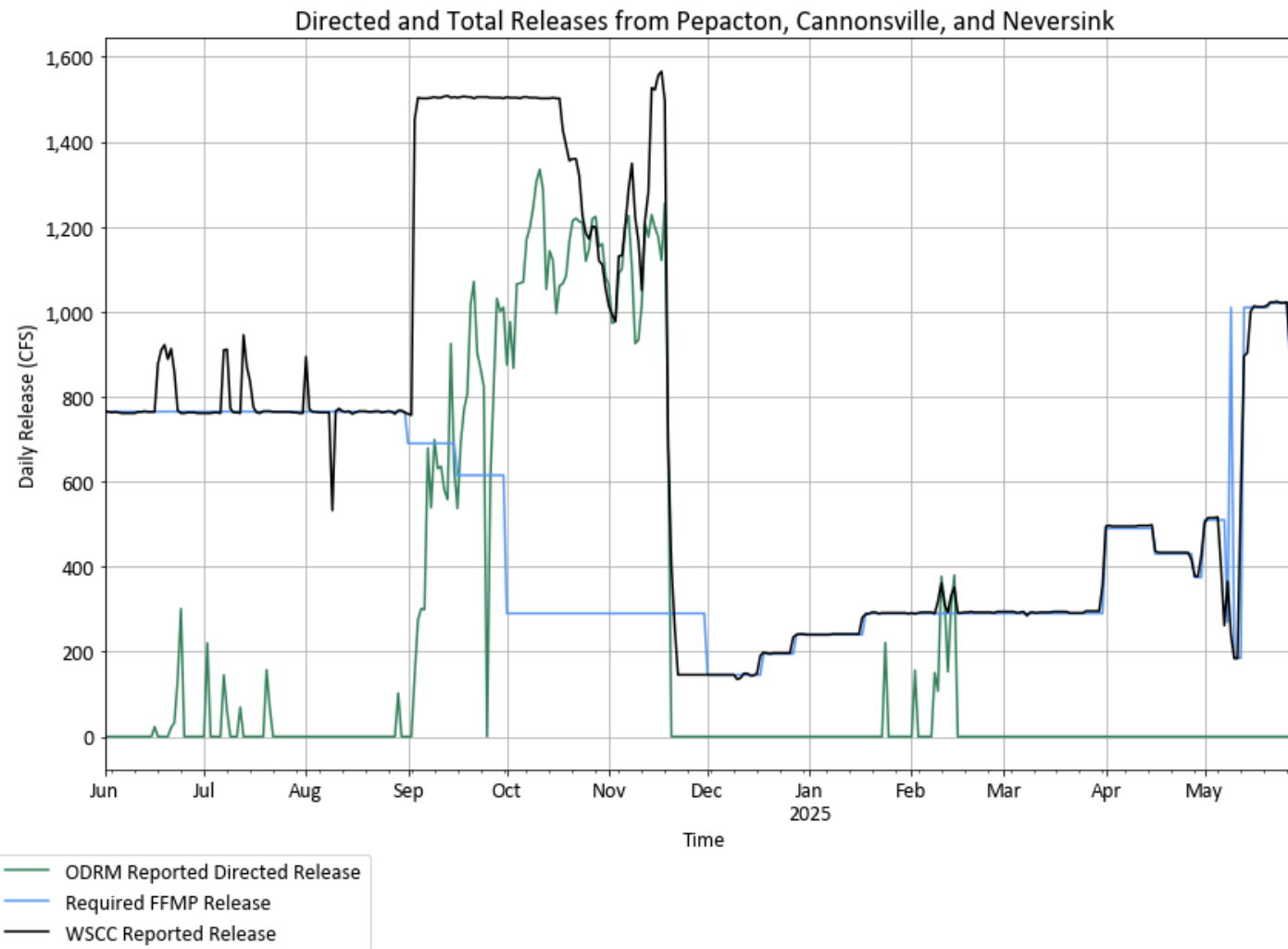
FFMP Bank Use

Thermal Releases were made on 7 days for 1 event in June 2024, 7 days for 2 events in July 2024 and 2 days for 1 event in August 2024. A total of 1,590 cfs-days were used.

FFMP 2017 Bank	Used	Size
NJ Diversion Amelioration Bank	0	of 2,545 cfs-days
Rapid Flow Change Mitigation Bank	219	of 1,000 cfs-days
Thermal Mitigation Bank	1,590	of 2,500 cfs-days
Trenton Equivalent Flow Objective Bank	2,900	of 9,423 cfs-days
NJ Diversion Offset Bank*	0	cfs-days

Combined Release History

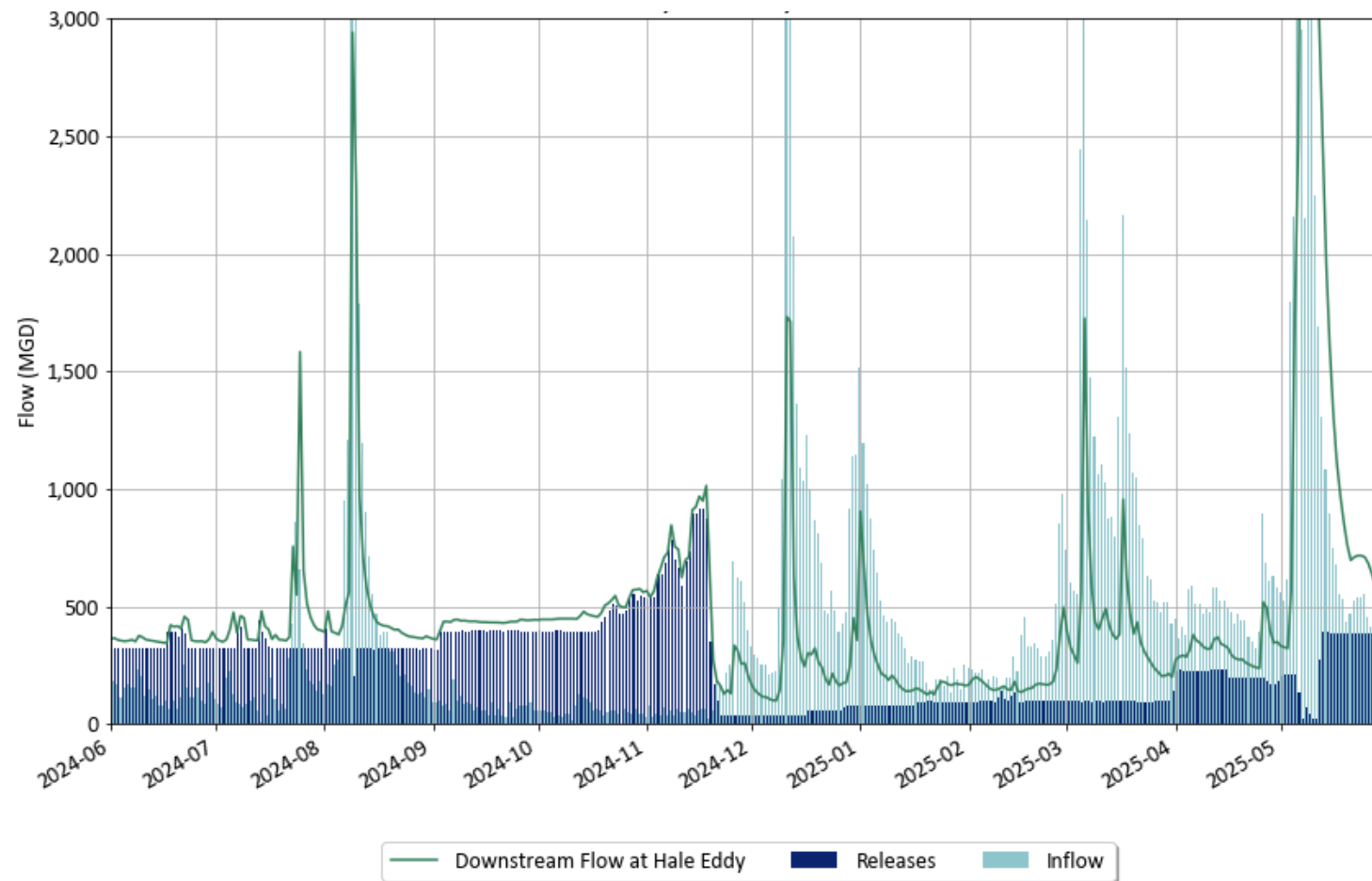
Conservation releases for 2024-2025 followed table 4G, 4E, 4A, 4F and 4C.



Data Source: NYCDEP, ODRM, USGS

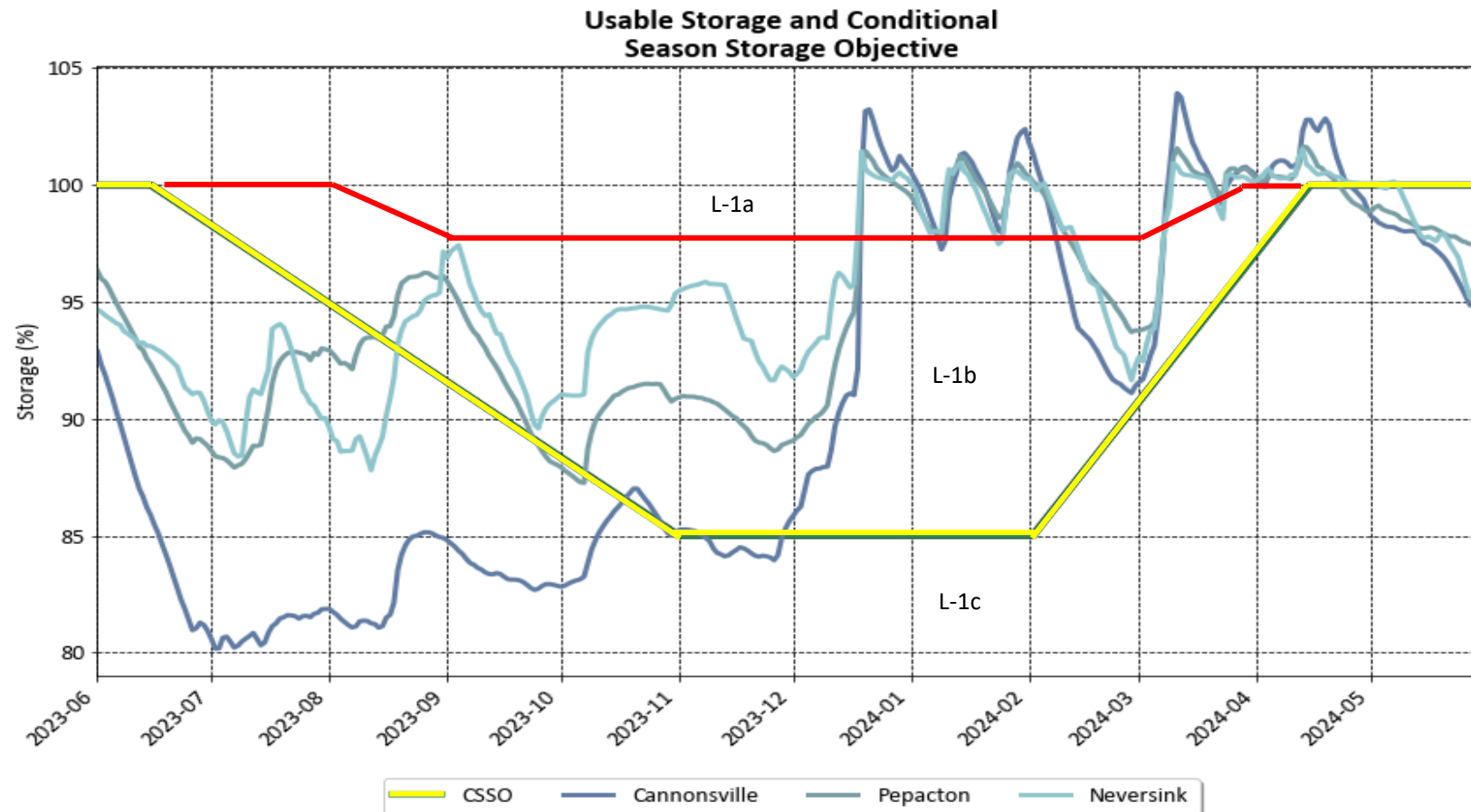
Cannonsville: Inflow, Releases and Downstream Flow

High releases in Summer and Fall 2024 to prepare for Delaware Aqueduct project.

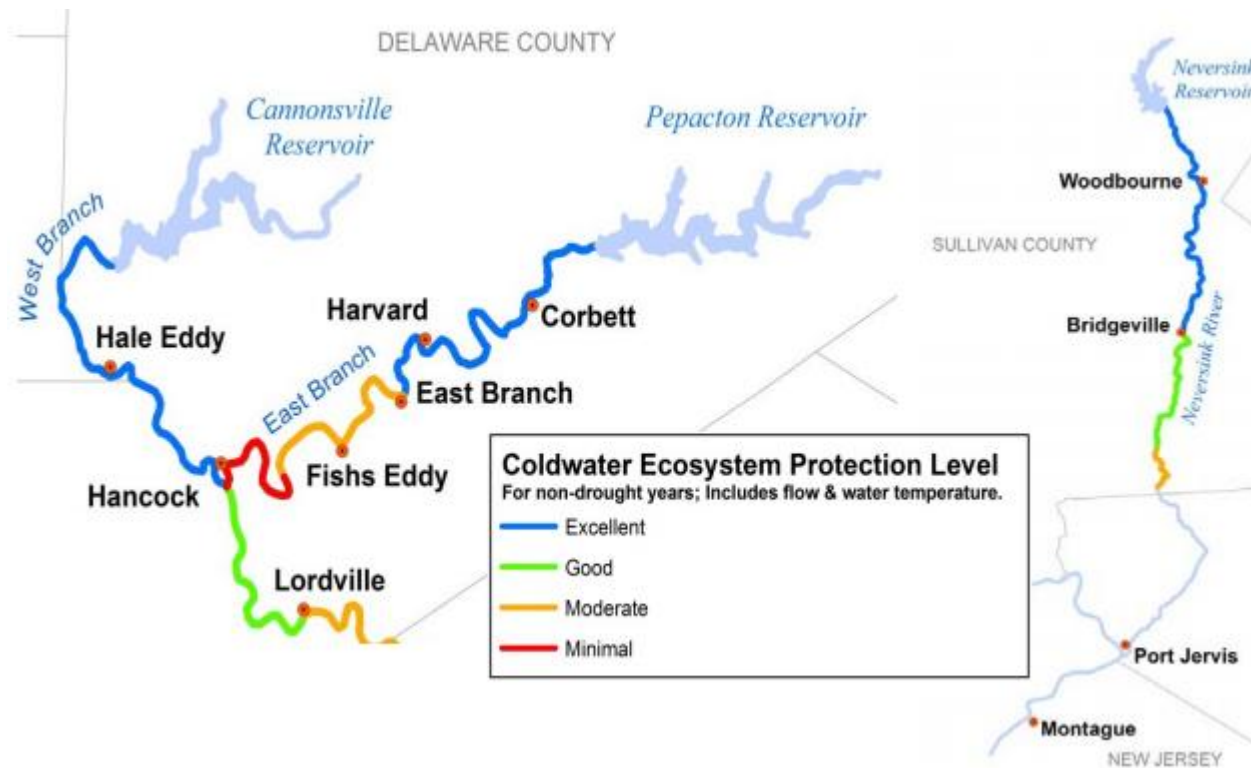


Discharge Spill Mitigation

Discharge mitigation releases were made throughout the January – May 2025.



Habitat Protection (Temperature)



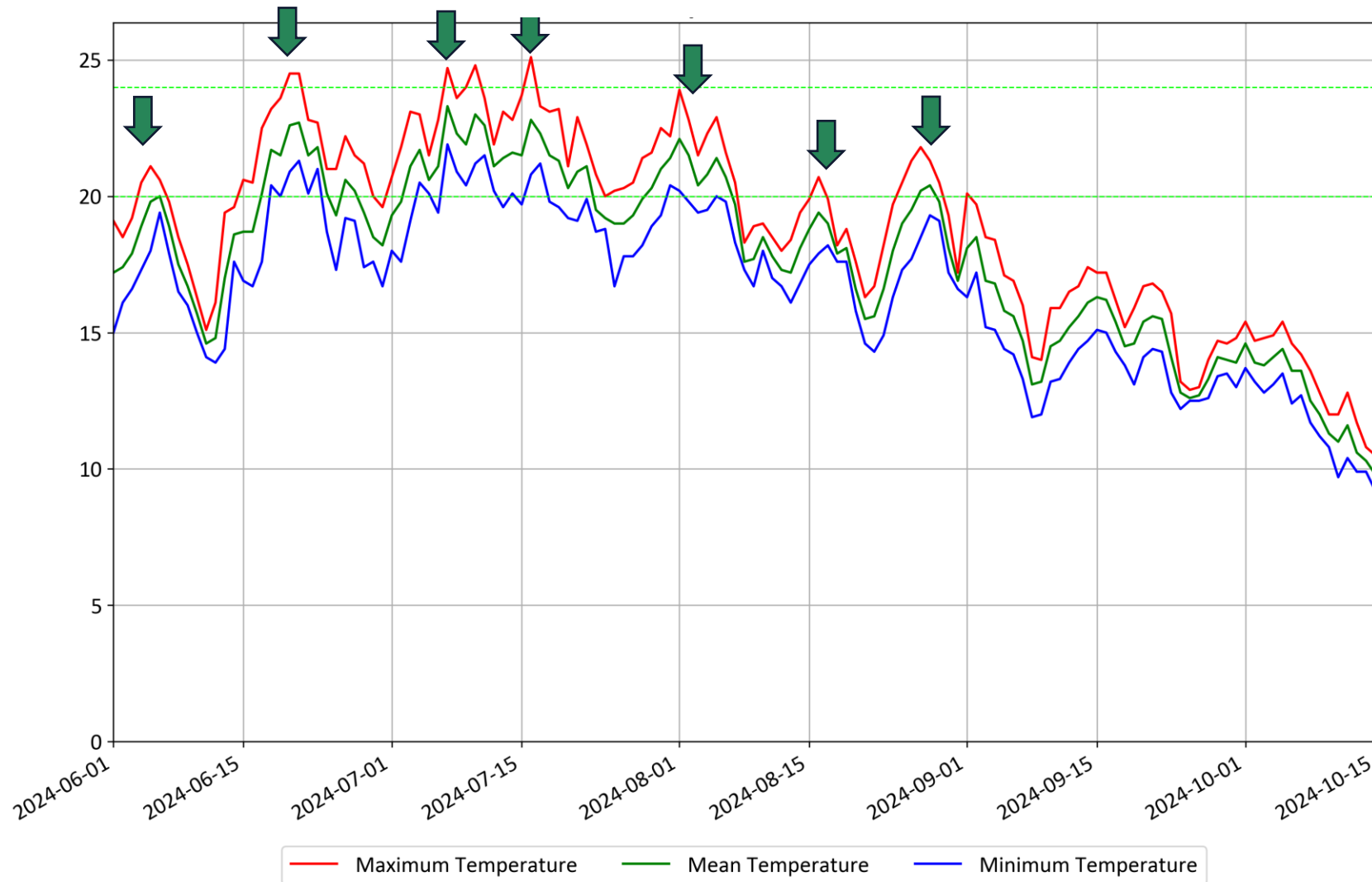
- **Goals for Excellent Habitat:**
 - Summer Temperature typical less than 20 °C
 - Rare Exceedances of 24 °C

Air Temperature

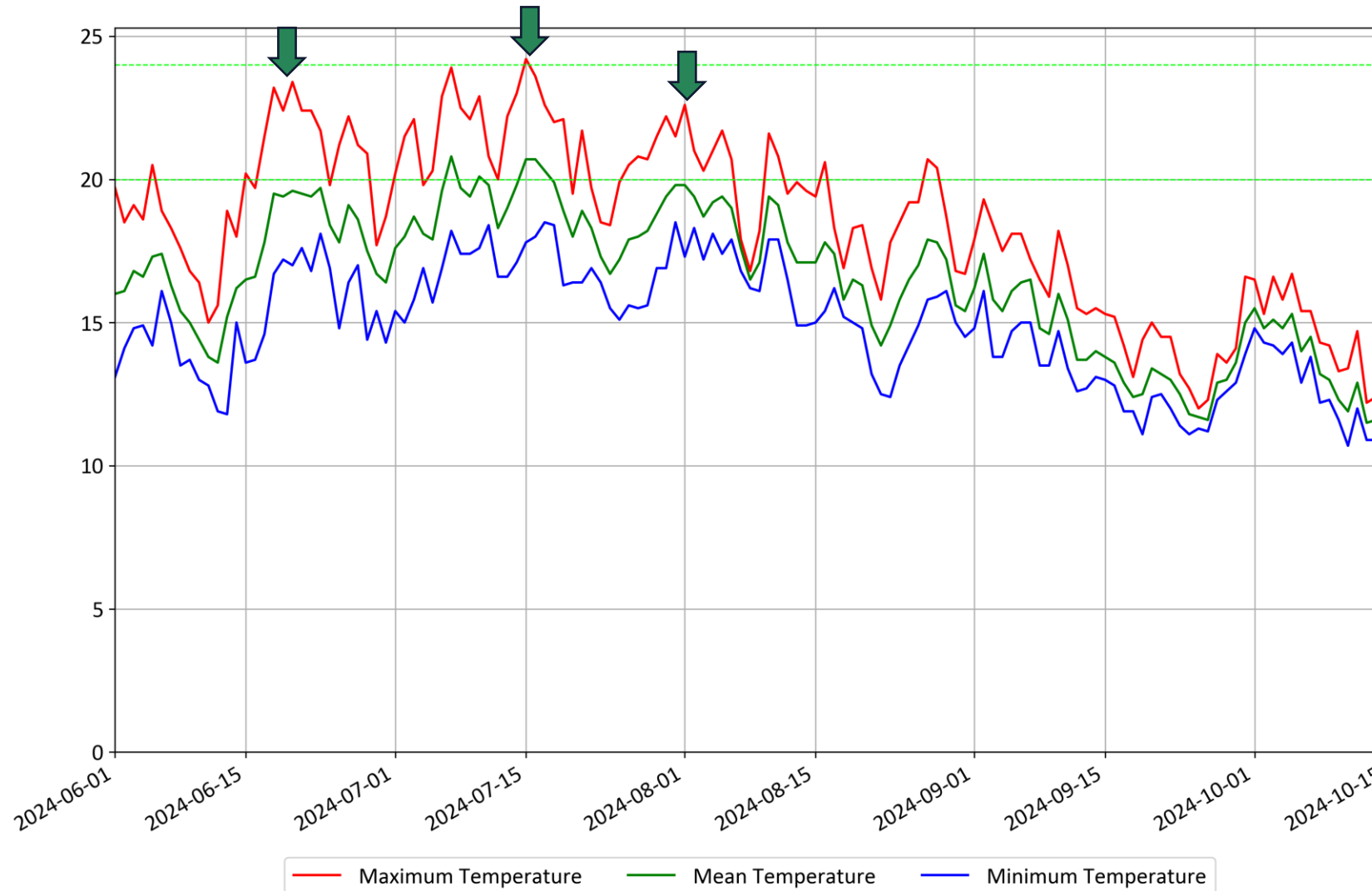
Bridgeville, Hancock, Harvard and Lordville had several exceedances of above 24°C .

Location	Exceedances of 24 ⁰ C		Exceedances of 20 ⁰ C	
	Days Maximum Temperature above 24 ⁰ C	Days Average Temperature above 24 ⁰ C	Days Maximum Temperature above 20 ⁰ C	Days Average Temperature above 20 ⁰ C
Hale Eddy	0	0	0	0
Harvard	0	0	1	0
Hancock	0	0	2	0
Lordville	5	0	61	41
Bridgeville	1	0	48	5

Water Temperature at Lordville

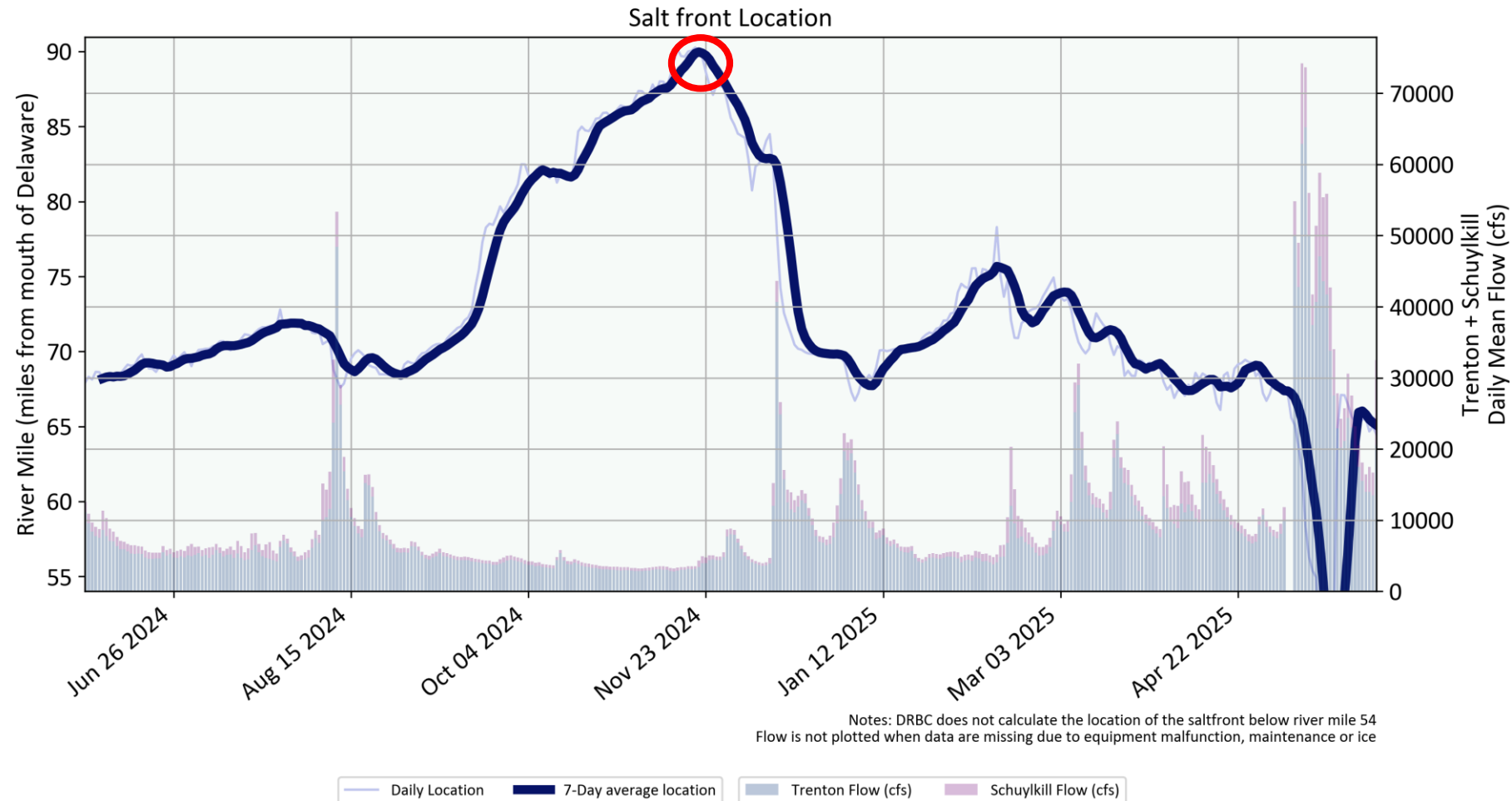


Water Temperature at Bridgeville



Salinity Management

No drought emergency occurred during this FFMP release year.



Summary of FFMP performance 2024-2025

- Normal operations were in effect for the release year.
- Montague and Trenton flow objectives were met within operational constraints (weather forecasts, power generation)
- Conservation releases were mixed. 80% Table 4G, 9% Table 4E, 5% Table 4A, 3% for Table 4F and 3% Table 4C.
- Thermal Releases were made for 16 days in summer 2024.

Questions?



Scan the QR code to find
this year's full report!