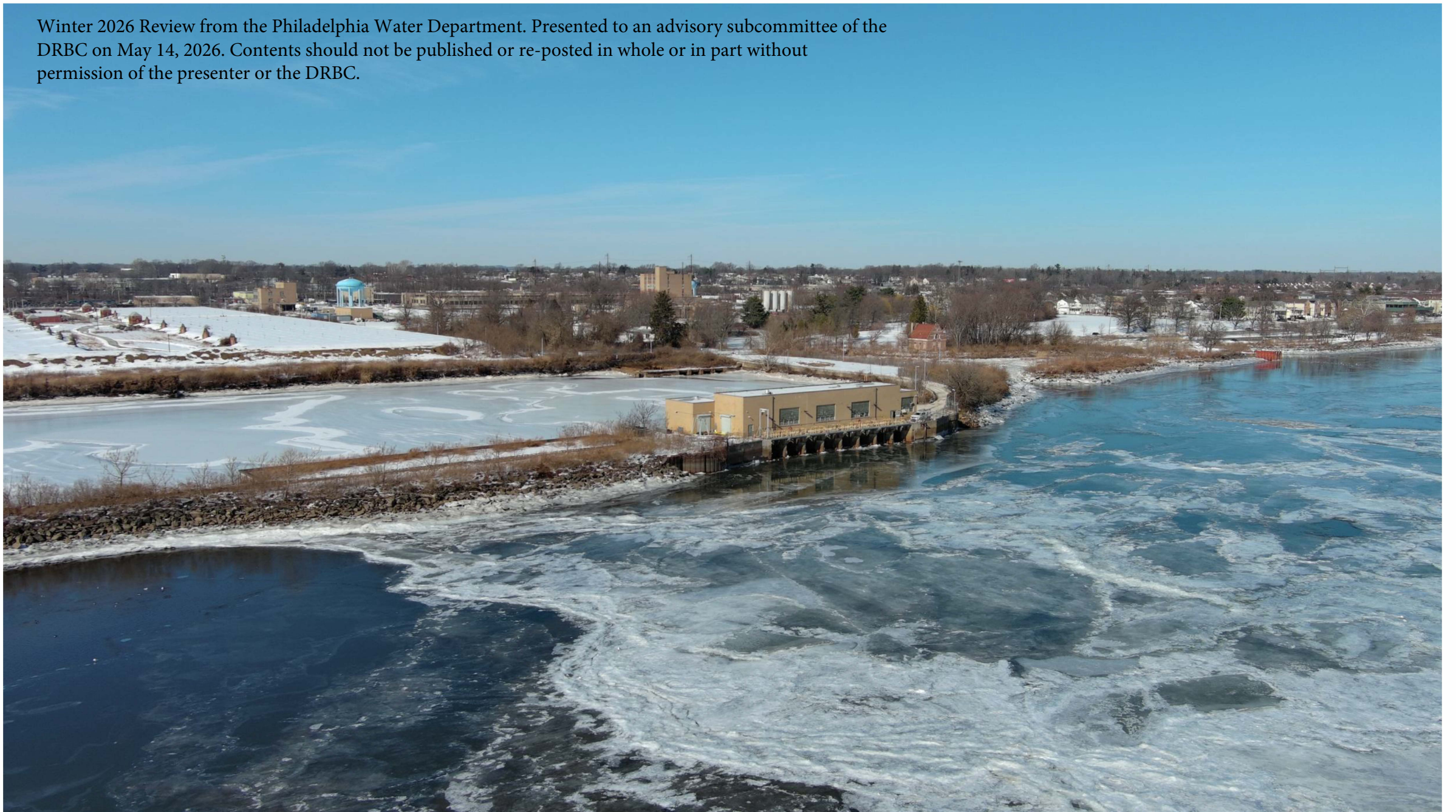
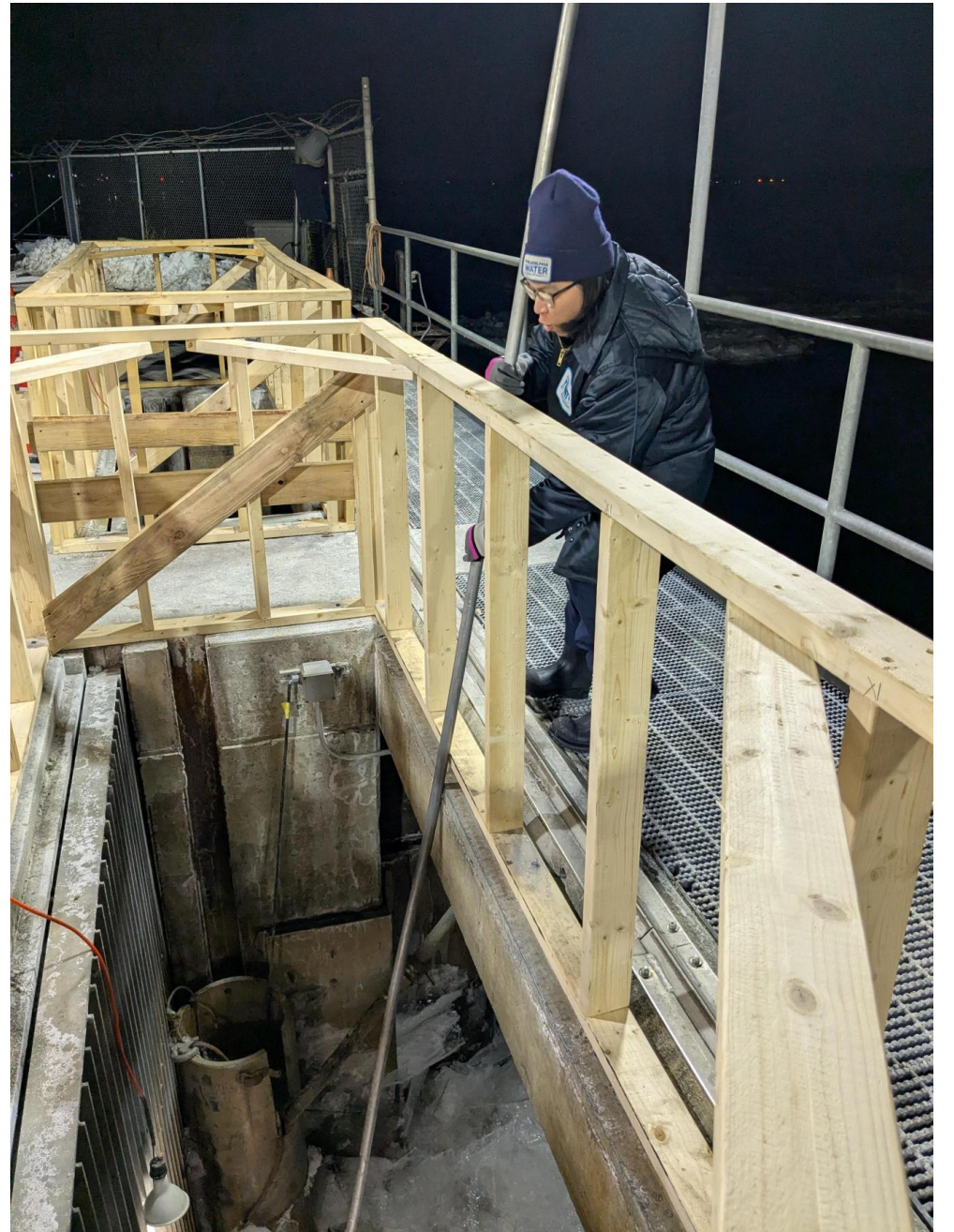


Winter 2026 Review from the Philadelphia Water Department. Presented to an advisory subcommittee of the DRBC on May 14, 2026. Contents should not be published or re-posted in whole or in part without permission of the presenter or the DRBC.











THE RECYCLER



PWD Source Water Actions

Daily Briefings

- Everyone informed and connected (Executives, Operations, Flow Control, Labs, Watersheds, Public Affairs)
- “What do you need?” (Pumps, generators, gloves, heaters, vehicles, snow/ice removal)
- “How do we solve it?” (Increased staffing, external resources, coordination with partners)

Source Water Daily Conditions Reports

- Forecast of icing conditions
- Evaluation of basin reservoir storage and salt line location
- Report streamflow conditions for Delaware and Schuylkill

Snow Melt Communications

- Provided treatment plant staff with information on anticipated changes in water quality (increased chloride, sodium, TDS, ammonia) modeled from data collected during similar 2015 winter event

Partners involved in the response planning:

- PEMA (PA Emergency Management Agency)
- Philadelphia Office of Emergency Management
- US Coast Guard - Delaware Bay Sector
- U.S. Army Corps of Engineers
 - Cold Regions Research and Engineering Laboratory (CRREL)
 - Pennsylvania Silver Jackets (Evaluates flood risk and flood damages including Ice Jams)
- Mid-Atlantic River Forecast Center
- United State Geological Services
- National Weather Service – Mount Holly
- Dept. Homeland Security - CISA (Cybersecurity and Infrastructure Security Agency)
- FEMA R3 Logistics
- PA DEP
- PA Business Emergency Operations Center
- New Jersey SP/EMA and NJDEP
- Philadelphia Barge Company