

# Delaware River Basin Commission

## Water Audit Program

Michael Thompson, P.E.

**March 3, 2026**  
Water Loss Training  
BCCC – Newton Campus



# What is the Delaware River Basin Commission?



Established by interstate compact in 1961, a regional body with the force of law to oversee a unified approach to managing a river system without regard to political boundaries.



Delaware



New Jersey



New York



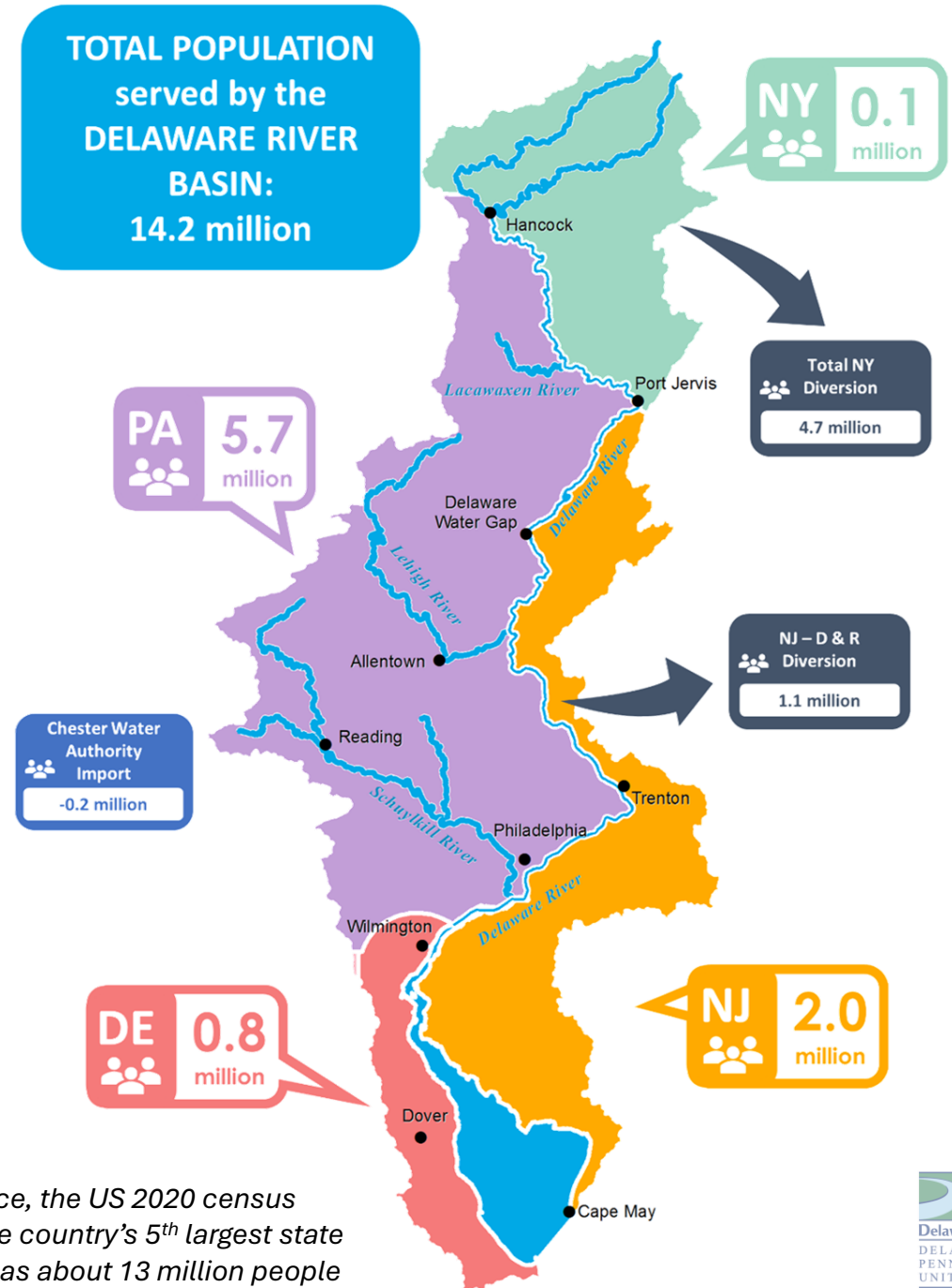
Pennsylvania



Federal Gov't (USACE)

“ provide trusted, effective and coordinated management of our Basin’s shared water resources. ”

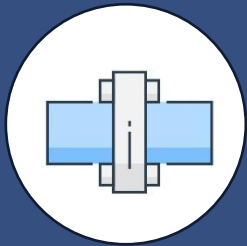
# Over 14 million people rely on the Delaware River Basin for drinking water



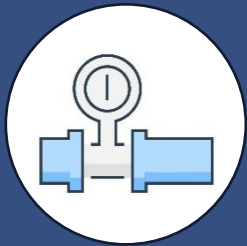
For reference, the US 2020 census reported the country's 5<sup>th</sup> largest state population as about 13 million people (Pennsylvania).



# The DRBC “Water Audit Program” applies to around 300 water systems



29,000 miles of water main  
(enough to circle the Earth)



2.5 million service connections  
(active and inactive)



**2000**

International Water Association publishes research standardizing methods to quantify water loss



**2006**

DRBC staff participate on the American Water Works Association (AWWA) Water Loss Control Committee (WLCC) and help publish the first AWWA Free Water Audit Software (FWAS)



**2007-2009**

DRBC undergoes rulemaking process  
Adopted Res 2009-1 to amend the Water Code  
Applies to systems which:  
*“distribute water supplies in excess of an average of 100,000 gallons per day (gpd) during any 30-day period”*

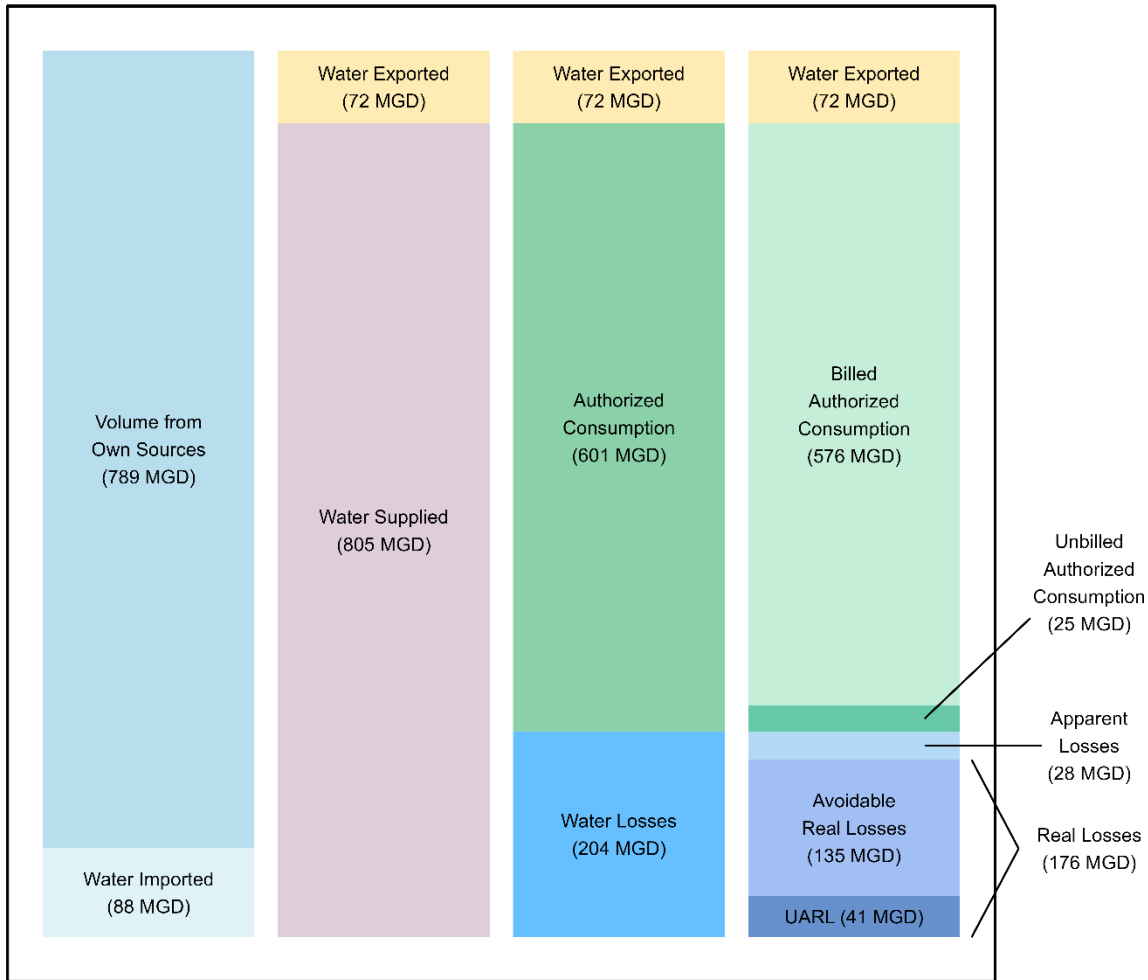


**2013**

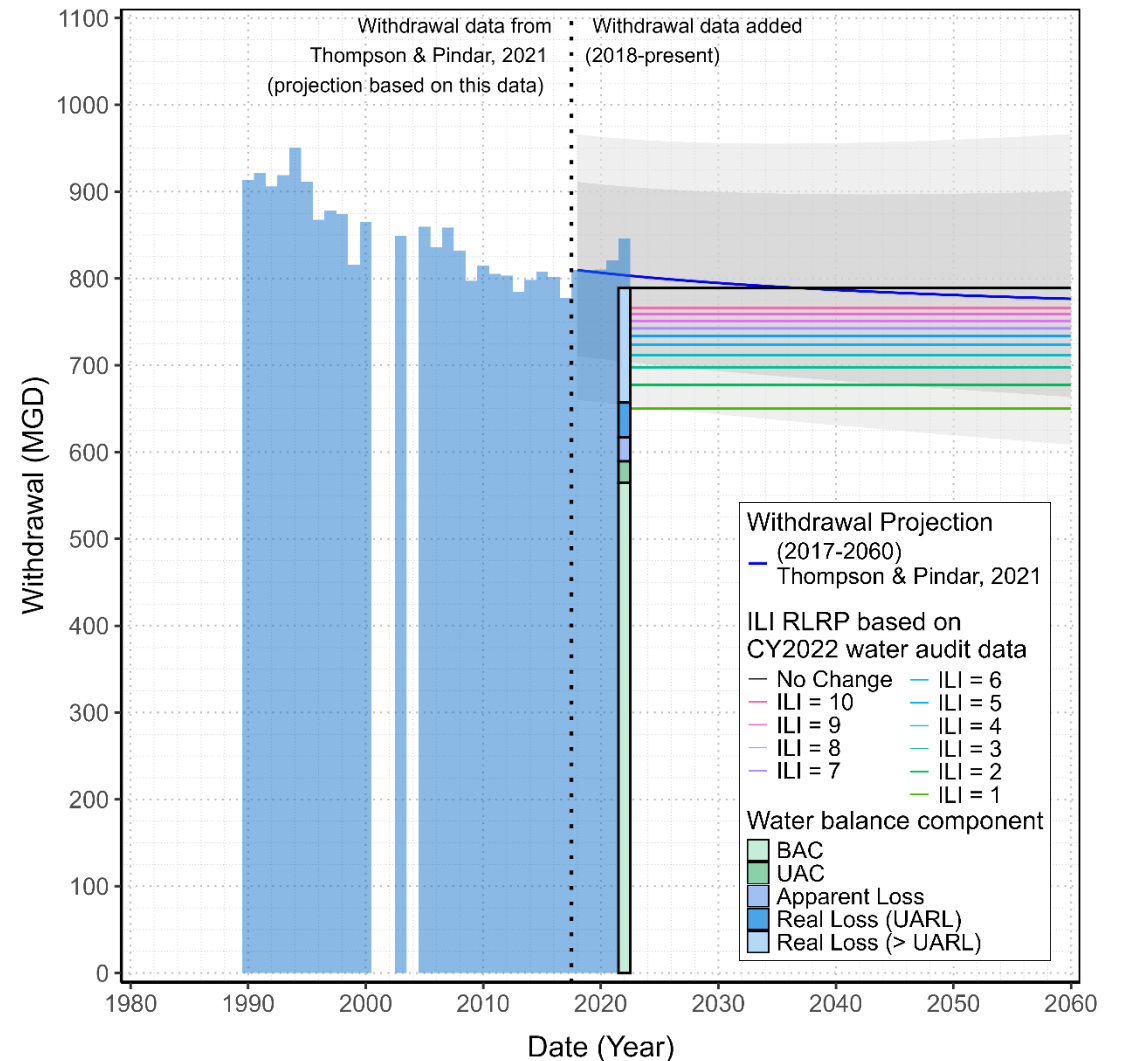
The first mandatory water audits are due for CY2012

# Why is this information useful?

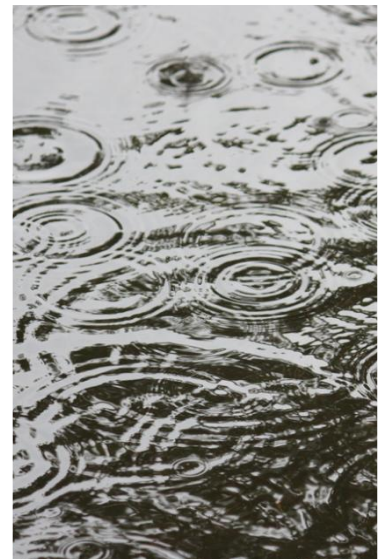
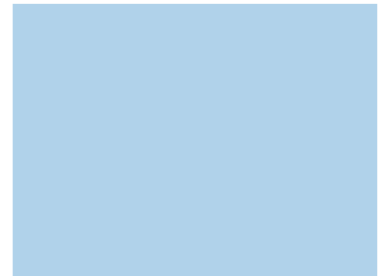
## CY2024 Aggregate Water Balance



## Withdrawal projections vs. potential reduction



We never know the Worth of Water,  
till the Well is dry.



Michael Thompson, P.E.  
Senior Water Resource Engineer  
---  
Delaware River Basin Commission  
E: [Michael.Thompson@drbc.gov](mailto:Michael.Thompson@drbc.gov)  
P: (609) 883-9500 ext. 226



DRBC website



DRBC audit program

