

# Update: Delaware River Basin Commission Population Served

**Water Management Advisory  
Committee (WMAC)**

***Sara Sayed***

**February 8, 2023**



This presentation was given at the February 8, 2023, WMAC Meeting. Content may not be published or re-posted in whole or in-part without the DRBC's permission.

Credit: Sara Sayed

# Delaware River Basin Commission Population Served

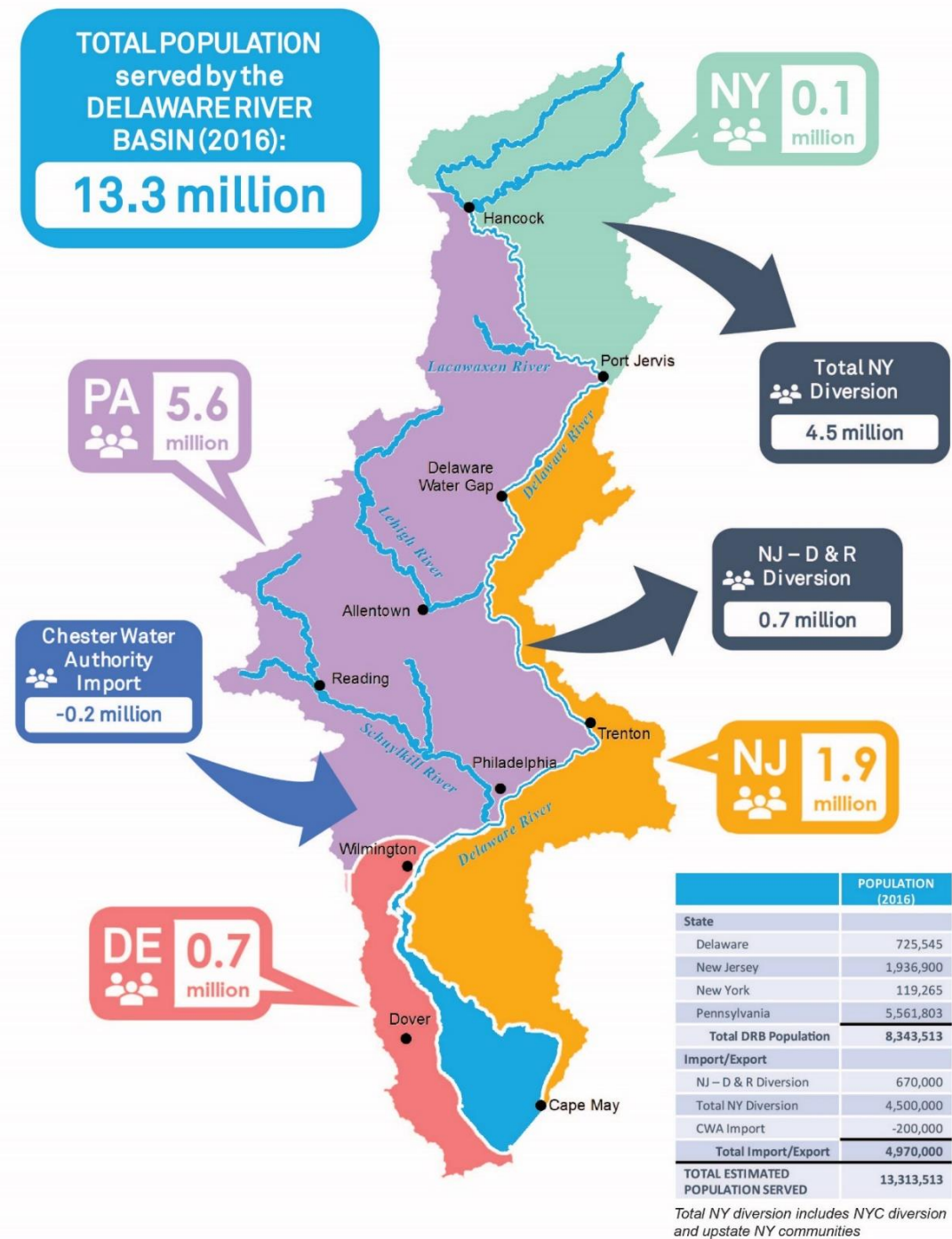
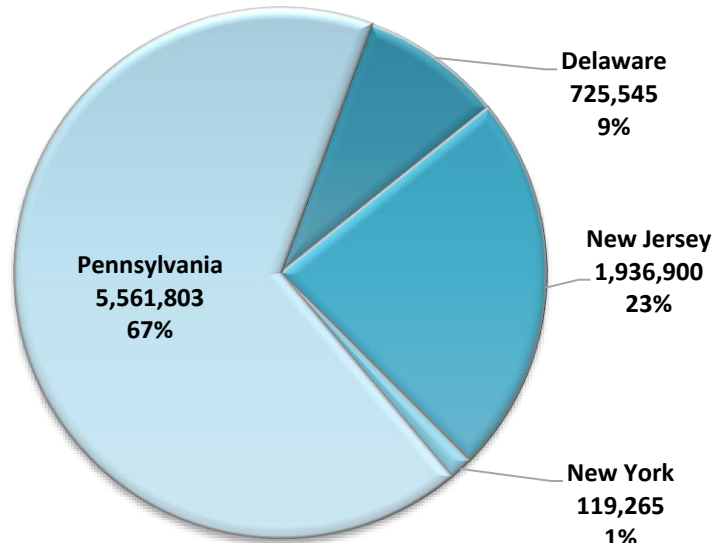
- FY2023-2025 Water Resources Program included a task to update the Population Served estimate for the DRB
- DRBC most recently provided a Population Served estimate in July 2018 based on CY 2016 information
- 2016 total population served by DRB water was estimated at **13.3 million**
- Methodology presented to WMAC in October 2018



# 2016 DRB Population Served

- In 2016, the population in the DRB was estimated to be **8.34 million**

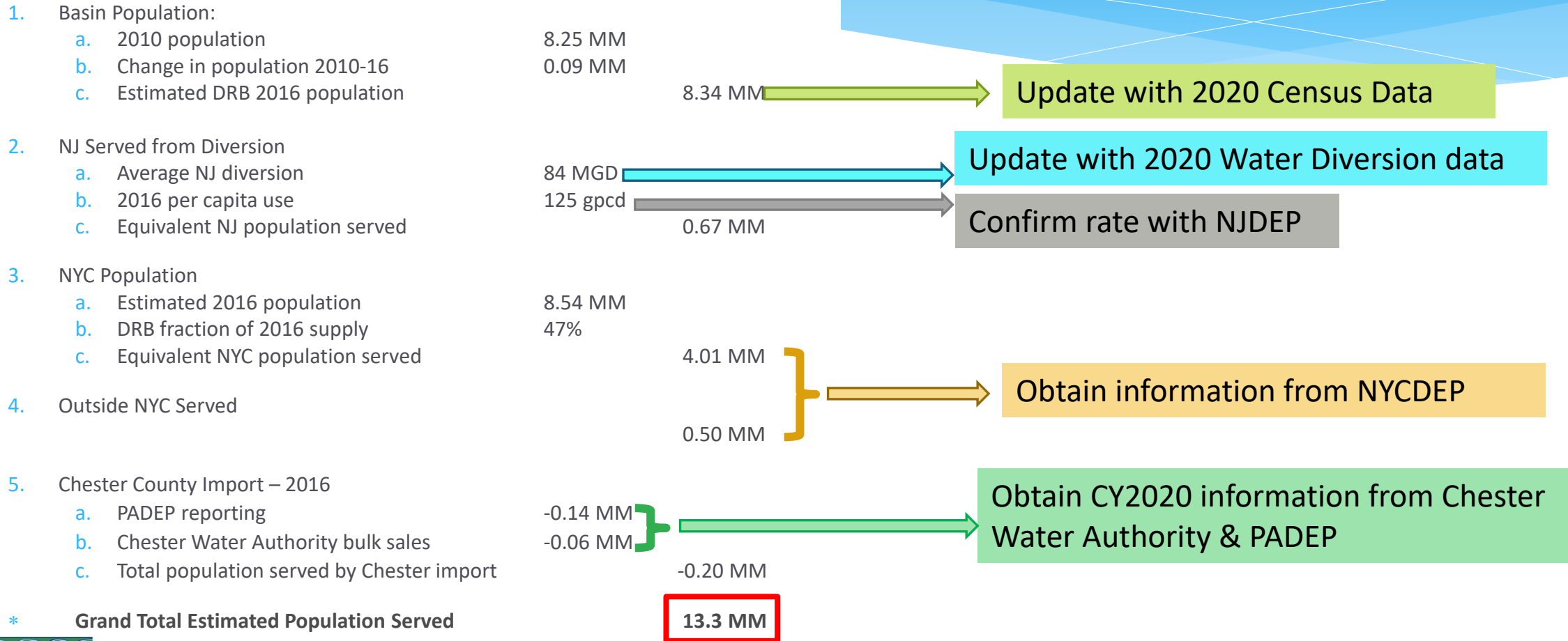
Delaware River Basin Population 2016



# 2016 DRB Population Served

## 13.3 MM

### Estimation of Population Served by DRB Water - 2016 Data



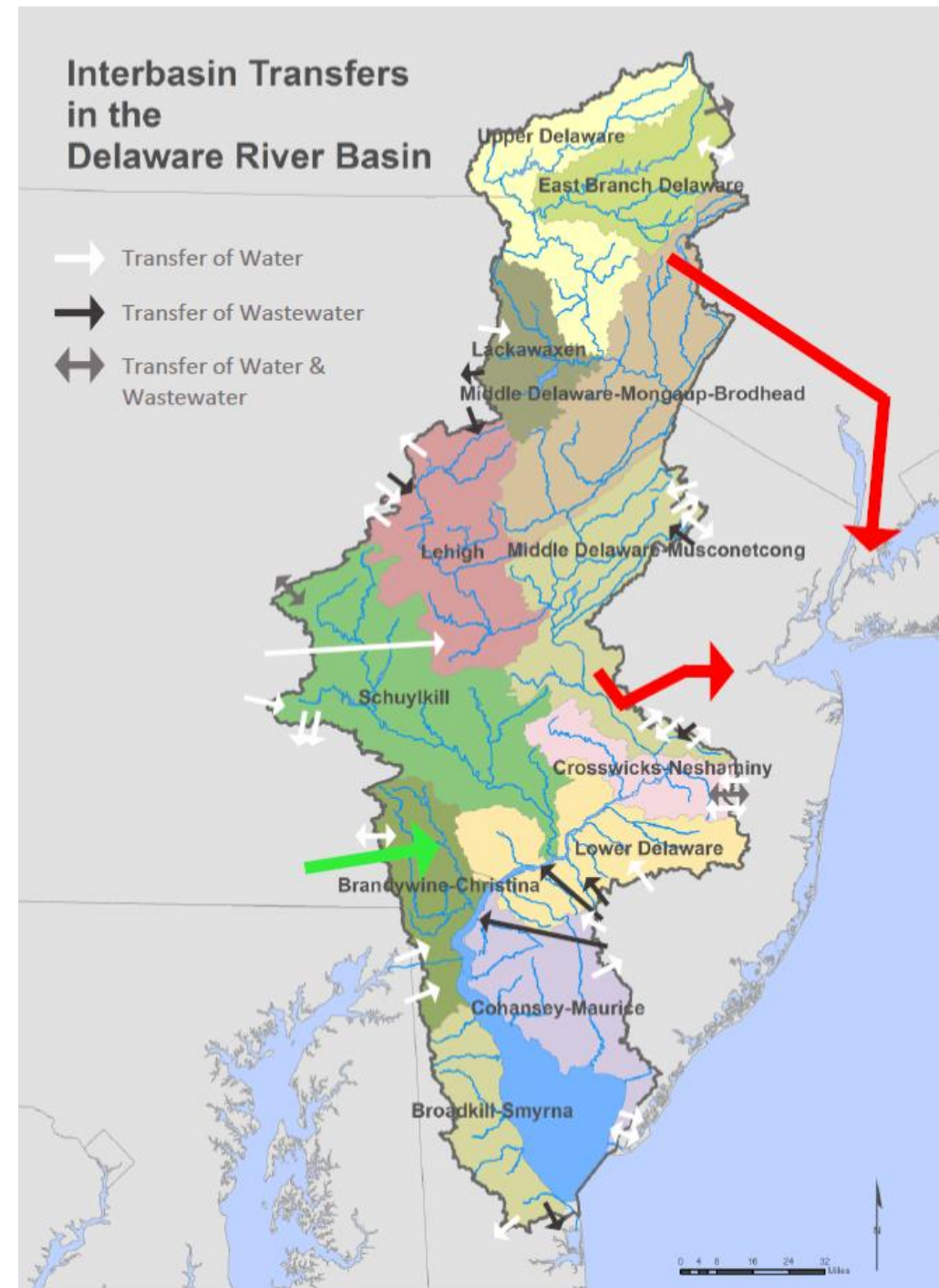
# 2020 Population Served Update

## Next Step

- DRBC staff made specific requests to the following agencies via WMAC liaison\*:
  - NYCDEP
  - NJDEP
  - PADEP
  - Chester Water Authority

Goal: Complete revised estimate by Fall 2022

\* where applicable



# 2020 DRB Population Served

## 14.2 million

**Table 1: Estimation of Population Served by Delaware River Basin Water (2020 Data)**

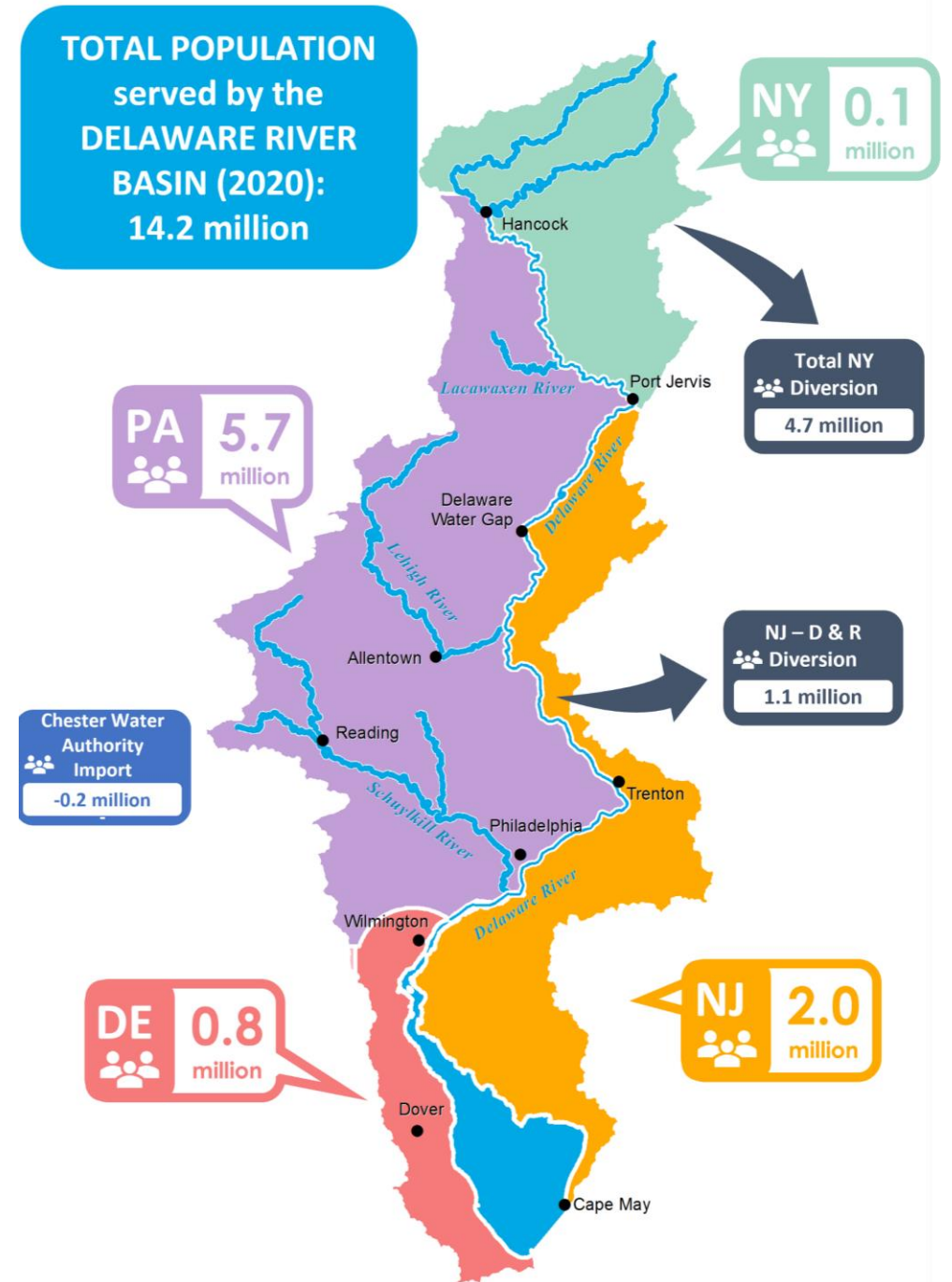
<b>1. Basin Population<sup>1</sup></b>			
a. Population residing within the DRB boundary ..	8.629 MM	←	Updated with 2020 Census Data
<b>2. NYC Population<sup>2</sup></b>			
a. Estimated 2020 NYC population .....	8.804 MM	}	← Updated with data from NYCDEP
b. DRB fraction of NYC supply .....	48%		
c. Equivalent NYC population served .....	4.226 MM		
<b>3. Outside NYC Served</b>			
a. Communities along aqueduct .....	0.438 MM	←	
<b>4. NJ Served from Diversion<sup>3</sup></b>			
a. Equivalent NJ population served .....	1.087 MM	←	Updated with CY2020 estimate from NJDEP
<b>5. Chester Water Authority Import<sup>4</sup></b>			
a. CWA's Delaware County service area (PA) .....	0.112 MM	}	← Updated with CY2020 data from Chester Water Authority
b. CWA's Chester County service area (PA) .....	0.034 MM		
c. CWA bulk sales			
i. Veolia (DE) .....	0.001 MM		
ii. Suez (DE) .....	0.009 MM		
iii. Artesian (DE) .....	0.031 MM		
d. Total DRB population served by CWA .....	-0.187 MM		
<b>Grand Total Estimated Population Served .....</b>	<b>14.193 MM</b>		



# 2020 Population Served Update

2020 Census data indicates that the estimated population in the Basin has increased to **8.63 million (+.29 million)**

	POPULATION (2020)
State	
Delaware	0.774
New Jersey	1.989
New York	0.117
Pennsylvania	5.749
<b>Total DRB Population</b>	<b>8.629</b>
Import/Export	
NJ – D & R Diversion	1.087
Total NY Diversion	4.664
CWA Import	-0.187
<b>Total Import/Export</b>	<b>5.564</b>
<b>TOTAL ESTIMATED POPULATION SERVED</b>	<b>14.193</b>



# 2020 Population Served Update

- Biggest increases in population seen in PA **(+0.187 MM)** & NJ **(+.052 MM)**
- Small decline in NY (in basin) population
- Large increase in NJ (out of basin) population due to change in calculation methods
- Future population served updates will occur on a **5-year** interval
- This work will be published in **next WRP**

*Summary of estimates for the population served by water from the Delaware River Basin.*

Reference:	(DRBC, 2018)	(DRBC, 2018)	(DRBC, 2023)
Data Year:	2010	2016	2020
In-Basin Population (NY)	0.122	0.119	0.117
In-Basin Population (NJ)	1.940	1.937	1.989
In-Basin Population (PA)	5.488	5.562	5.749
In-Basin Population (DE)	0.700	0.726	0.774
Out-Basin population inside NYC		4.010	4.226
Out-Basin population outside NYC		0.500	0.438
Out-Basin population in New Jersey		0.670	1.087
Chester Water Authority Imports		-0.200	-0.187
TOTAL		13.324	14.193