

Delaware River Basin Commission

Water Conservation Update

Chad Pindar, P.E.

Manager, Water Resource Planning Section

June 20, 2019

Water Management Advisory Committee

Presented to an advisory committee of the DRBC on June 20, 2019.
Contents should not be published or re-posted in whole or in part
without permission of DRBC.



AGENDA

- * Review of previous DRBC water conservation efforts
- * Water Conservation Survey
- * Water Audit Survey
- * Water Audit Report

DRBC Water Conservation Regulation History

- 1976:** program TO REDUCE WATER USE IN BASIN
- 1981:** information on water conserving devices and procedures
- 1983:** Depletive Use reduction during drought
- 1986:** Source & Service Metering
- 1987:** Leak Detection & Repair (UFW)
- 1988:** Conservation Plumbing Standards
- 1992:** Water Conservation Pricing
- 2006-9:** Water Loss Accountability (WMAC)
- 2009-11:** “Water Audit” Rule/Outreach
- 2012:** First year for new water audit format
- 2019:** 7th year of water audit

Water Conservation Survey

DRBC staff are preparing a questionnaire to better understand the current status of Public Water Supply management practices.

- * Metering (source & service)
- * Leak Detection & Repair
- * Water Audits

Water Conservation Survey

Build upon PADEP – DRBC water loss training efforts from Fall 2018.

Aiming for 2020

Water Audit Survey

2015 DRBC survey on water audit program

web-based (SurveyMonkey)

10 questions (most multiple choice)

4 years into program

25 responses (out of ~250) entities

2020 DRBC survey on water audit program

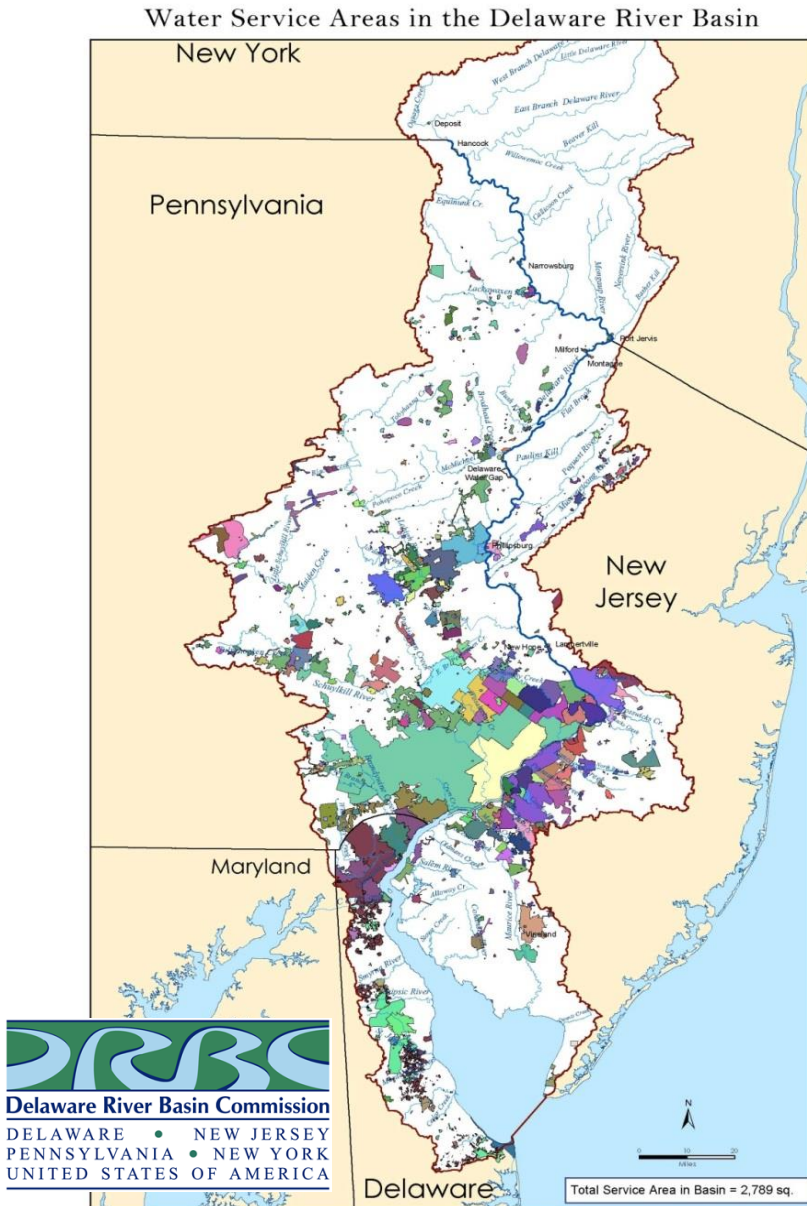
web-based

follows extensive 3 part training in Fall 2018

seeking larger docket holder response

help shape future of program

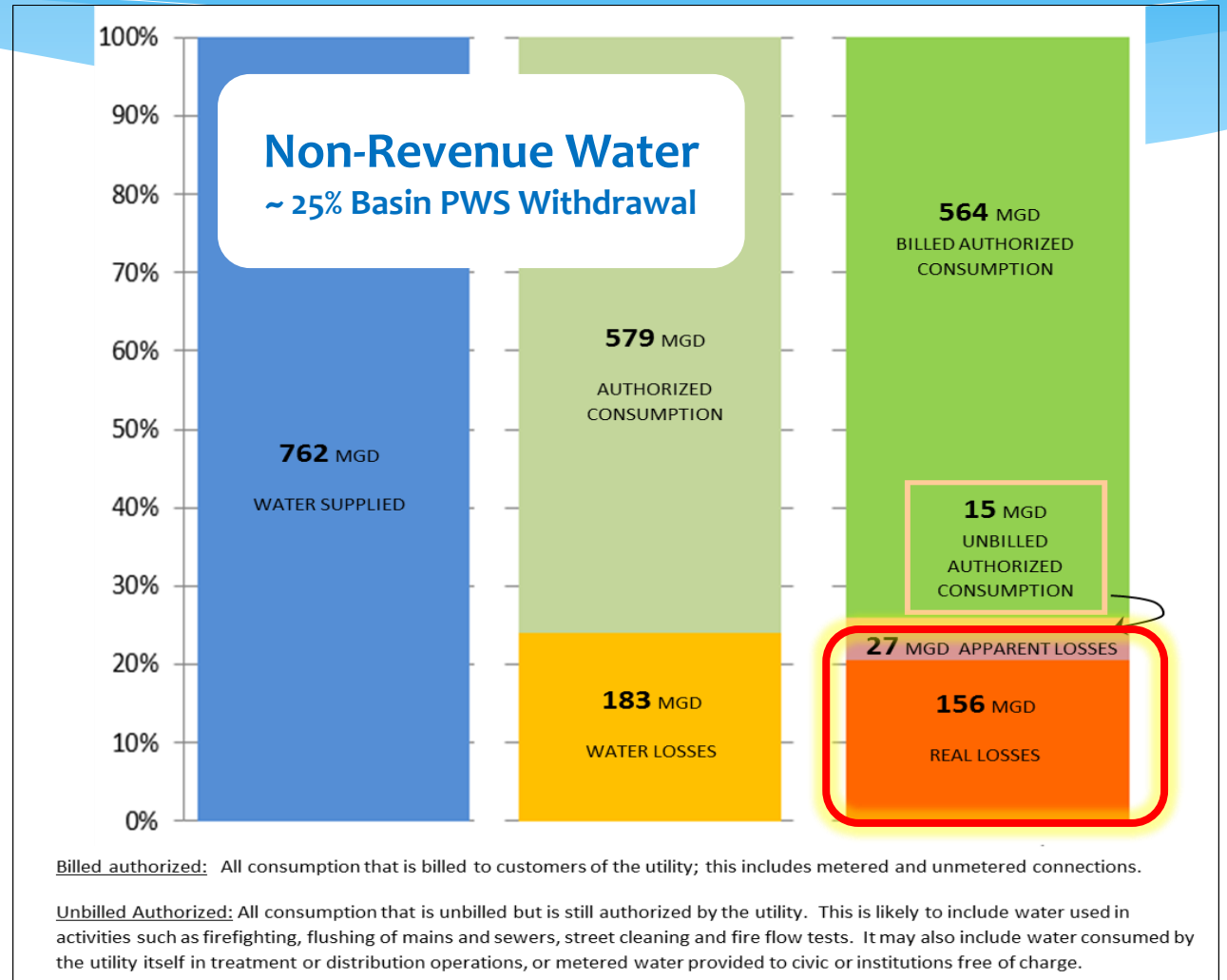
Public Water Supply Service Area in the Delaware River Basin



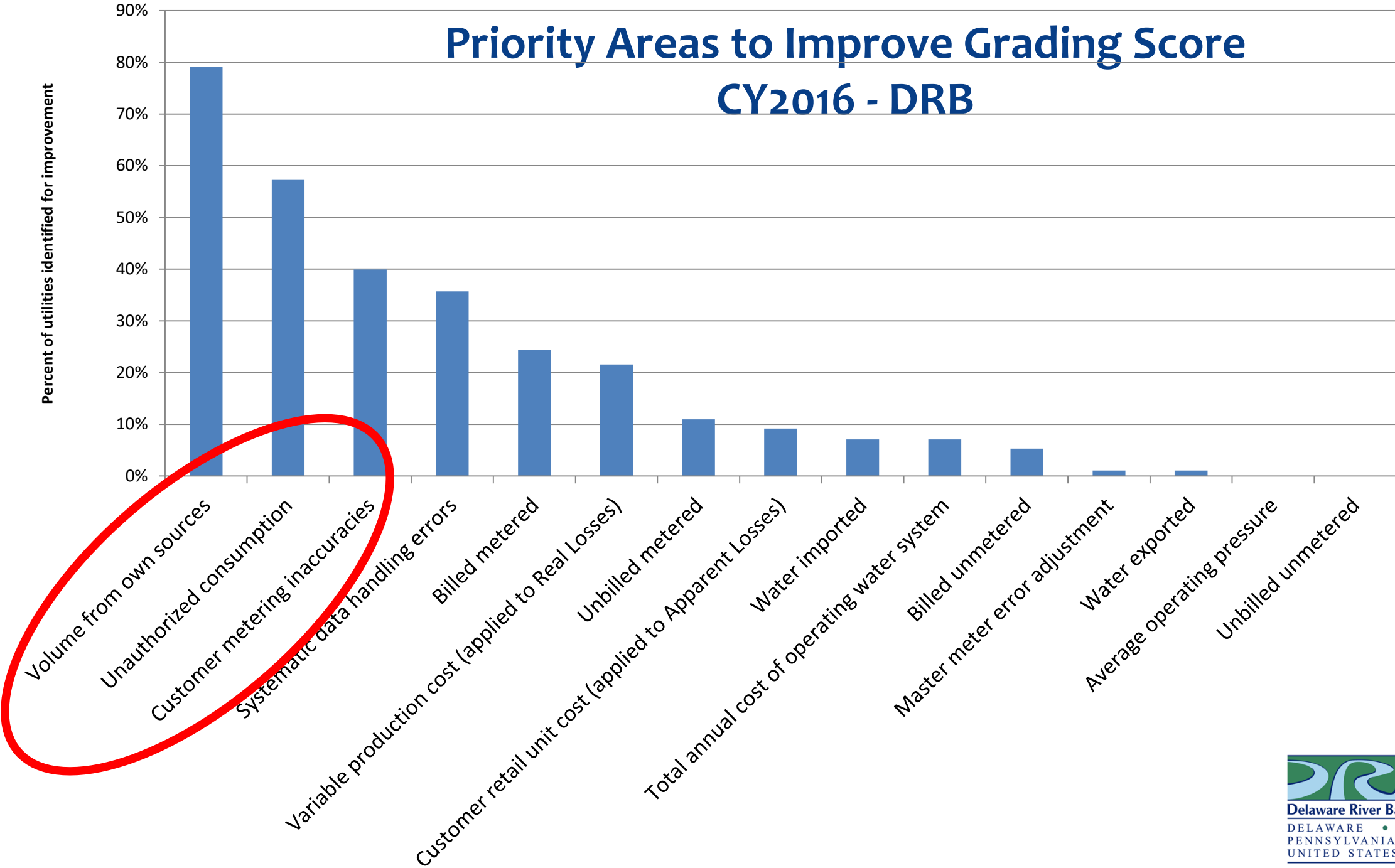
- Total PWS withdrawals (2016):
 - **~1,003 MGD total** (all users)
 - **~762 MGD audited** (regulated by DRBC)
- 2nd largest water use sector in the Basin
- Approx. 21% of Basin covered by service area
- Serve 6.7 million customers (80% of basin residents)
- Approx. 300 systems subject to Water Audit Requirement

Water Audit Reporting

- Annual requirement for PWSs to report on calendar year
- Reminder email to docket holders, engineers, and operators in Jan/Feb – water audits due March 31
- Electronic delivery to water.audit@drbc.gov
- Receive, track, and process ~300 water audit submissions annually



Priority Areas to Improve Grading Score CY2016 - DRB



Water Audit Reporting

- Generate bi-annual water audit report utilizing Compiler: 2012, 2014, 2016
- * <https://www.state.nj.us/drbc/programs/supply/water-audit-program.html>
- * Instead of doing a review of CY2018, looking to do more trend analyses
 - * How have things changed since 2012?

Analysis of Calendar Year 2016 Water Audit Data
from Public Water Supply Systems in the
Delaware River Basin

DELAWARE RIVER BASIN COMMISSION



Delaware River Basin Commission

DELAWARE • NEW JERSEY
PENNSYLVANIA • NEW YORK
UNITED STATES OF AMERICA

February 2018