

Delaware River Basin Commission

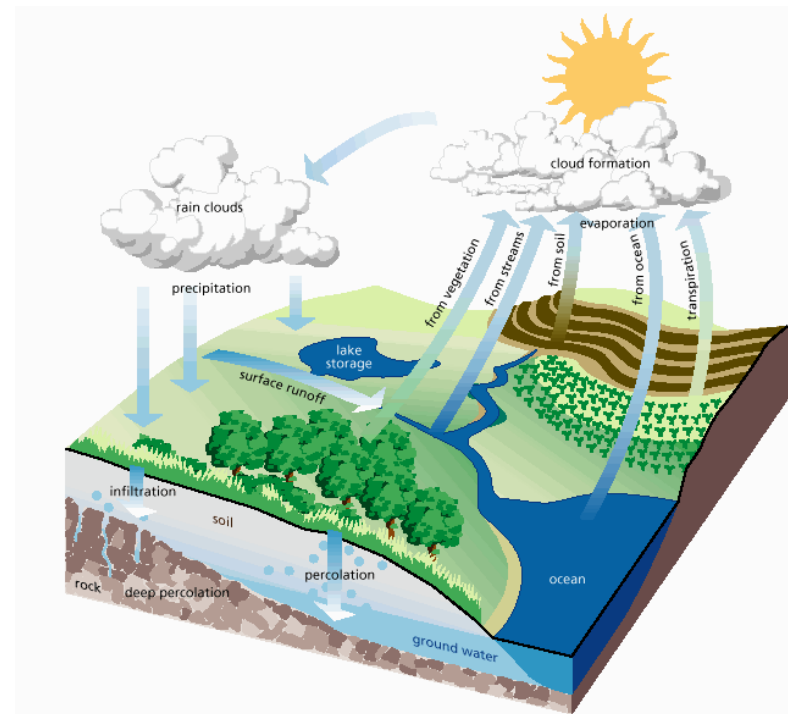
Groundwater Management Workshop

Water Management
Advisory Committee

October 22, 2015



Delaware River Basin Commission
DELAWARE • NEW JERSEY
PENNSYLVANIA • NEW YORK
UNITED STATES OF AMERICA



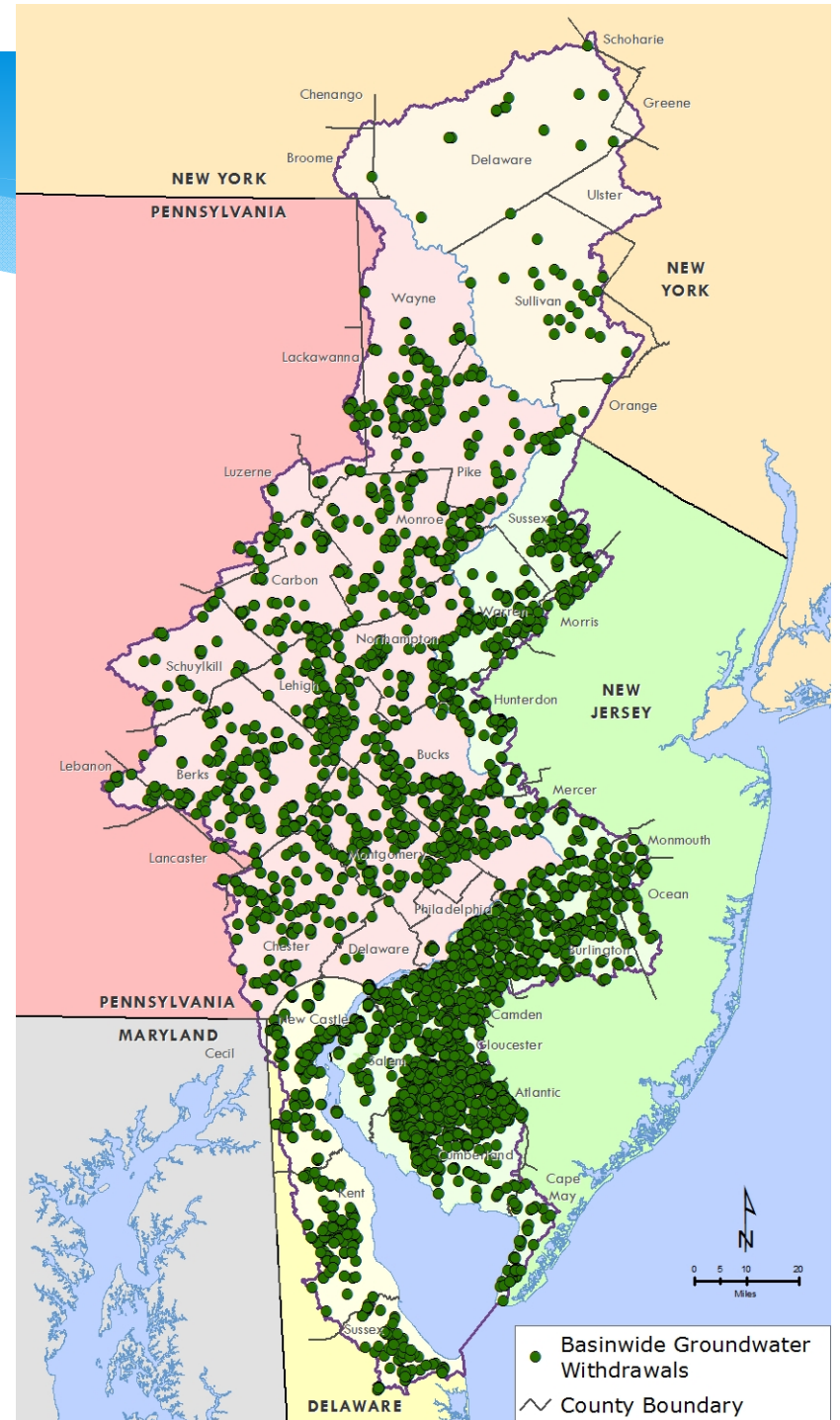
Agenda

- * 10:00 ADMINISTRATION
- * 10:15 GROUNDWATER MANAGEMENT IN THE DELAWARE RIVER BASIN: Introduction & Overview
- * 10:30 PRESENTATIONS – GROUNDWATER MANAGEMENT APPROACHES
 - * DE Portion of DRB
 - * DE Coastal Plain Assessment
 - * NJ Pinelands
 - * NJ Highlands
- * 12:00 LUNCH
- * 1:00 PRESENTATIONS – GROUNDWATER MANAGEMENT APPROACHES
 - * NJ Critical Area 2
 - * NJ Remaining Areas in DRB
 - * NY Portion of DRB
 - * PA GWPA
 - * PA Remaining Areas in DRB
 - * General Basin Areas
- * 3:00 DISCUSSION
- * 4:00 ADJOURN

DRBC Role in Groundwater

- * Docketing basinwide
 - * DE/NJ – State lead
 - * NY – DRBC lead
 - * PA -- DRBC lead except PWS
- * Southeastern PA Groundwater Protected Area (SEPA GWPA)
- * Planning Studies

Groundwater Withdrawals in the Delaware River Basin



Multi-Jurisdictional Study (MJS) - 2008

- DRBC and USACE Philadelphia District
- **Task 1: Long term sufficiency of Water Supply (2003 “baseline” and 2030 “projections”). DRBC primarily responsible for demand estimations, projections and water availability assessment**
- USACE responsible for identifying potential solutions to supply / demand imbalances

Enhancing Multi-jurisdictional Use and Management of Water Resources for the Delaware River Basin, NY, NJ, PA, and DE
December 2008



Prepared by:



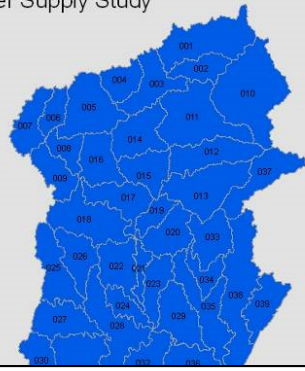
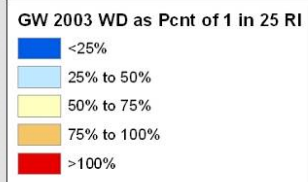
USACE
Philadelphia District



MJS - Ground Water Sufficiency Analysis: 2003 and 2030

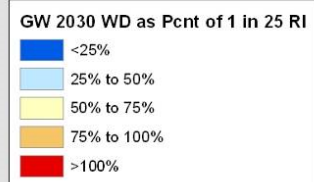
DRBC / USACE Long Term Sufficiency of Water Supply Study

Ground Water: 2003



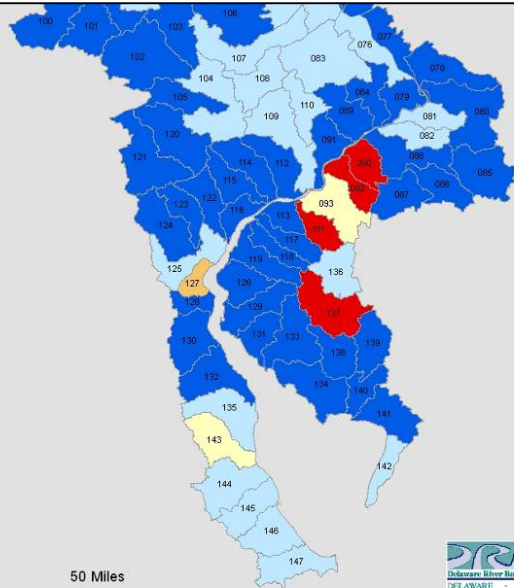
DRBC / USACE Long Term Sufficiency of Water Supply Study

Ground Water: 2030

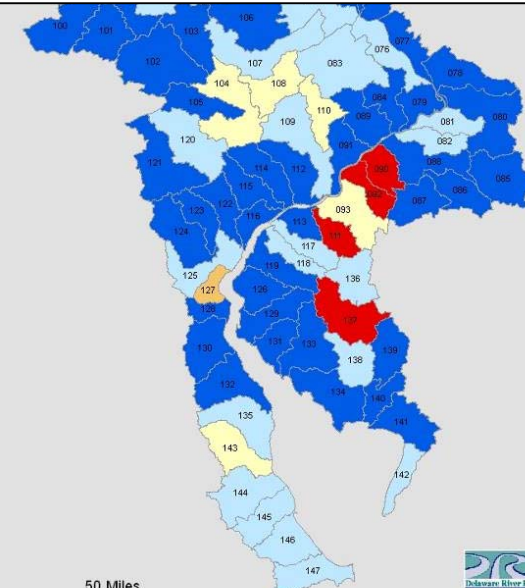


Groundwater analysis used methodology developed for the DRB by USGS, similar to the GWPA methodology (1:25 Yr Recurrence Interval)

- Calculations on 147 watersheds roughly HUC 11.
- Groundwater analysis showed no significant groundwater issues outside of known areas.



DRBC
Delaware River Basin Commission
DELAWARE • NEW JERSEY
PENNSYLVANIA • NEW YORK
UNITED STATES OF AMERICA



DRBC
Delaware River Basin Commission
DELAWARE • NEW JERSEY
PENNSYLVANIA • NEW YORK
UNITED STATES OF AMERICA

Regional Groundwater Management Areas in the Delaware River Basin

