



17. D-2010-022-1

SPONSOR XTO Energy, Inc.

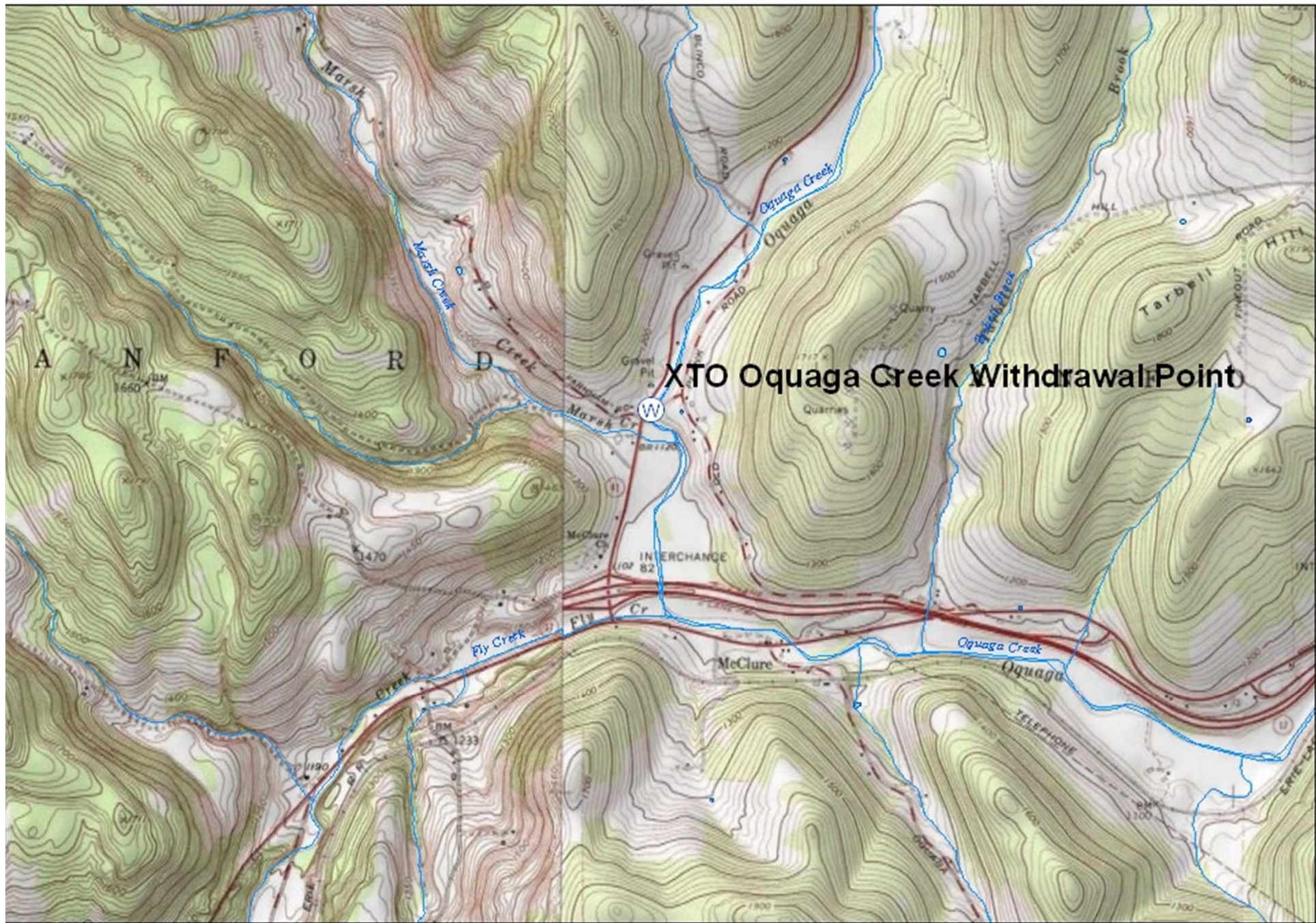
LOCATION Town of Sanford
Broome County, NY
Special Protection Waters

TYPE Surface Water Withdrawal

OTHER

- Approval of a SWWD project to supply up to 0.25 mgd or 7.50 mgm of water for the applicant's natural gas exploration and production activities in Broome and Delaware Counties in the State of New York.
- Surface water will be withdrawn at one location on Oquaga Creek.
- Docket includes 8 cfs pass-by flow condition.
- Docket condition that withdrawals may only be used at docket holder's approved natural gas well pad sites located in Broome and Delaware Co.'s within DRB.
- Located in the Oquaga Creek Watershed. Upper Delaware Special Protection Waters.





XTO Oquaga Creek Withdrawal Point



41

XTO Withdrawal Point

Old Plank Rd

Gill Rd

Oquaga Creek Withdrawal Site

Area/Wells Served

Water use limited to natural gas development and extraction activities (CONDITION C.k.):

- At all XTO Energy, Inc. well pads / lease holdings
- Within the counties of Delaware and Broome, New York
- Within the Delaware River Basin
- Natural gas development and extraction activities approved by DRBC and NYSDEC.

Natural gas development and extraction activities include:

- Natural gas well drilling activities
- Hydraulic fracturing well stimulation
- Mixing concrete for well construction
- Support vehicle tire washing/cleaning
- On-site dust control
- Access roads within XTO Energy, Inc.'s lease holdings

Oquaga Creek Withdrawal Site

Site facilities and activities will include:

- Semi-permanent floating water withdrawal intake
- 500 GPM intake pump
- Discharge directly to tanker truck (no storage tank)
- Metering facilities
- Restricted access
- Signage and withdrawal site supervisor
- Pipe will be secured and locked when not in use

Oquaga Creek Withdrawal Site

Water Use and Water Withdrawal

- Majority of withdrawn water will be used for hydraulic fracturing/well stimulation.
- Restricted to up to 0.25 mgd (CONDITION C.n.)
- Day is defined as midnight to midnight (CONDITON C.n.)
- Withdrawal not to result in the stream flow in the Oquaga Creek to be below 8 CFS and cannot resume withdrawals unless Oquaga Creek is flowing at least 8.4 CFS for a 24 hour period (CONDITION C.o.)
- USGS gage at Deposit and gage established at withdrawal point

Oquaga Creek Withdrawal Site

What is to be Approved?

Withdrawal docket approves water withdrawal, **BUT DOES NOT APPROVE:**

- Any natural gas well development activities.
- All natural gas well development activities require separate application and Commission approval (CONDITION C.j. and C.m.).

Withdrawal docket considers where wastewater will be treated and disposed of, **BUT DOES NOT APPROVE** wastewater disposal sites.

- Wastewater disposal conditions are included in the well pad approvals.
- No disposal of water or wastewater except at approved sites (CONDITION C.r.).

Oquaga Creek Withdrawal Site

Operations Plan

An Operations Plan is required to be submitted to the Commission and approved by the Executive Director prior to any withdrawal activities (CONDITION C.t.).

Operations Plan to include:

- **Compliance with withdrawal requirements**
 - Daily withdrawal allocation (CONDITION C.t.)
 - Pass-by flow monitoring requirements (CONDITION C.t)
- **Metering and reporting requirements**
 - Automatic metering (CONDITIONS C.u)
 - Report average daily flow and daily and monthly totals (CONDITION C.u.)
 - Violations reported to DRBC (CONDITION C.ff.)
 - Trucks metered and recorded (CONDITION C.v.)

Oquaga Creek Withdrawal Site

Other Docket Requirements

CONDITION C.i.

- **Non-Point Source Pollution Control Plan (NPSPCP) (SPW)**
 - Withdrawal site specific NPSPCP required to be submitted
 - No construction activities or withdrawals to take place at the withdrawal site until the NPSPCP has been submitted to the Commission and approved by the Executive Director

CONDITIONS C.b. and C.c.

- Docket approval subject to all conditions imposed by NYSDEC unless less stringent than DRBC.
- Docket does not exempt applicant from obtaining all necessary approvals from other state, federal or local government agencies.

CONDITION C.e.

- Construction plans and specifications to be approved by the E.D. prior to clearing, site preparation, construction, or water withdrawal.

CONDITION C.w.

- Implementation of a program to monitor and control leakage within the water supply system.

Oquaga Creek Withdrawal Site

Other Docket Requirements (cont'd)

CONDITION C.gg.

- Interference reporting and mitigation requirements
 - Notice to the E.D.
 - Notice to affected party regarding Condition requirements
 - Investigation required
 - Mitigation approved by E.D.
 - E.D. may modify or suspend docket

CONDITIONS C.aa. and C.bb.

- Drought plan and drought emergency requirements
 - Plan required within 90 days prior to any site clearing, construction, or withdrawal.
 - Water withdrawal subject to non-essential uses specified by:
 - NY GOVERNOR OR
 - DROUGHT COORDINATOR OR
 - EMERGENCY RESOLUTIONS OF COMMISSION

CONDITION C.cc.

- Review of reports subject to actual review costs incurred by the Commission.

Comment period, with written comments accepted through June 1, 2011

Paper submission mailed or delivered to:
Commission Secretary, DRBC, P.O. Box 7360, 25
State Police Drive, West Trenton, NJ 08628.
Please be sure to include the name, address, and
affiliation (if any) of the commenter. Paper
submissions will also be accepted at the public
hearing.